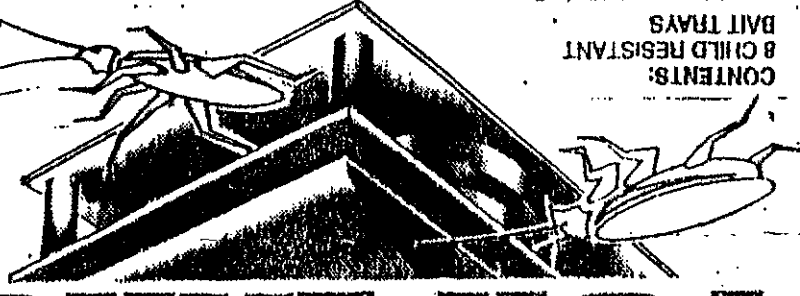


# ROACH CONTROL SYSTEMS FOR LARGE ROACHES, PALMETTO BUGS AND LARGE WATER BUGS

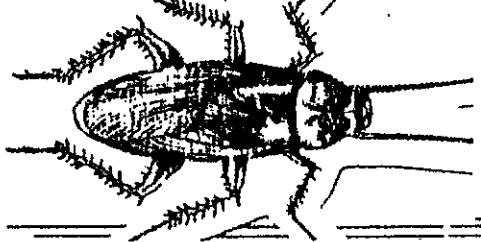
CAUTION: KEEP OUT OF REACH OF CHILDREN & DOMESTIC ANIMALS

Active ingredients: 0-ISO-PROPOXYPHENYL METHYL CARBAMATE 2%

KILLS ROACHES AS LONG AS BAIT LASTS  
CLEAN/EFFECTIVE, EASY TO USE  
IN TO BAIT... OUT TO DIE  
USE IN COMMERCIAL & RESIDENTIAL FOOD AREAS  
NEW INSPECTABLE BAIT STATIONS FOR FOOD AREAS  
STATIONS EQUIPPED WITH PRE-ATTACHED MOUNTING TABS



CONTENTS:  
8 CHILD RESISTANT  
BAIT TRAYS  
TOTAL NET WEIGHT: 1.5 OZ.



# FOR LARGE

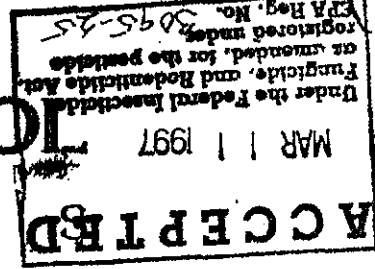
# SYSTEMS

# ROACH CONTROL

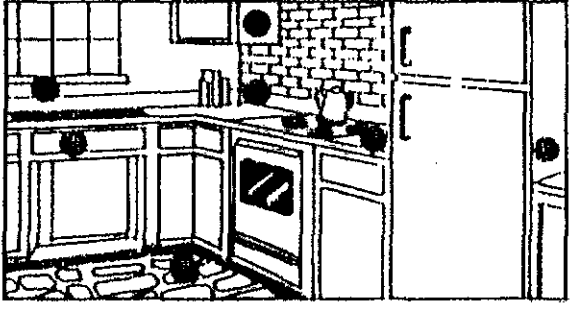
8 BAIT TRAYS

# LARGE ROACH CONTROL

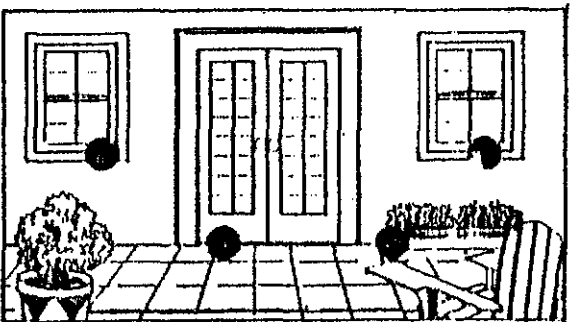
# SYSTEMS



# ROACH CONTROL SYSTEMS



Suggested Tray Placement •



- DIRECTIONS FOR USE:**
- It is a violation of Federal Law to use this product in a manner inconsistent with its labeling.
  - Do not remove from box till ready to use.
  - Prior to using: Remove all sources of food such as crumbs, sugar, grease spots.
  - Remove Bait Trays from plastic frame.
  - For effective roach control - Use all 12 Bait Trays at one time.

This large bait station is especially designed for large roaches, palmetto bugs and large water bugs. Large bugs usually live outdoors and enter the home seeking water and food. Thus, placement should be near possible home entry points - doors, garage doors, and porches. The smaller type roaches are usually found in bathrooms, pantries, and kitchens, especially near water pipes and refrigerators.

After using for 7 to 10 days, the roach population will decrease - replace the traps every 2-3 months for continued effective control.

**STORAGE AND DISPOSAL STATEMENT:**  
**STORAGE** - Store in area inaccessible to children.  
**DISPOSAL** - Wrap trays and put in trash can.

**CAUTION: HARMFUL IF SWALLOWED:**  
 Avoid contact with eyes or skin. Do not contaminate food or feedstuffs. Do not use this product in food areas of food handling establishments, restaurants, or other areas where food is prepared or processed. Do not remove Bait from trays.

**PRECAUTIONARY STATEMENT:**  
 Hazardous to Humans and Domestic Animals  
 Statement of Practical Treatment - If on skin, wash thoroughly with soap and water. If in eyes, flush with water.

EPA REG/3095-25 ... EPA EST. 3095-NJ-1

**Satisfaction or Refund.** Should "PIC Roach Control Systems" not reduce the roach population, return the 8 trays plus your sales slip for refund.

**PIC Corporation**  
23 South Essex Avenue, Orange, New Jersey 07050

LARGE ROACH CONTROL