

ONE GALLON (U.S.)

"New Jersey"

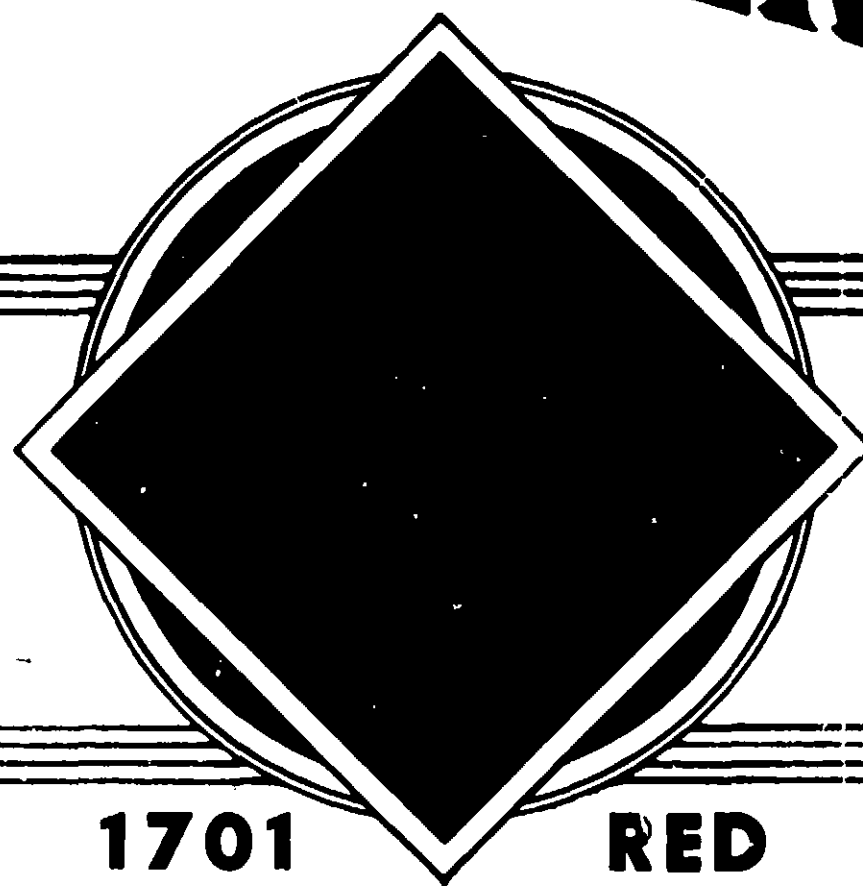
TRADE MARK

YACHT COPPER PAINT

SMOOTH—BRIGHT

FINELY GROUND

AN ANTI-FOULING PAINT
FOR THE PRESERVATION OF
WOODEN BOAT BOTTOMS



REPELLENT TO BARNACLES,
TEREDO WORMS, SEAWEEDS AND
OTHER MARINE GROWTHS

1701

RED

ACTIVE INGREDIENT: Copper Oxide 24%; INERT INGREDIENTS 76%

CAUTION—Keep out of reach of
children. See cautions on back label.

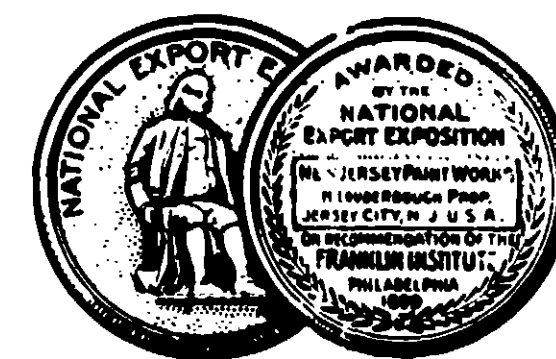
1701
COMPOSITION BY WEIGHT

Copper Oxide	24%
Red Iron Oxide C.P.	18%
Zinc Oxide	4%
Silicates	7%
Resin, Pine Tar	29%
Petroleum Thinners	16%
Aromatic Hydrocarbons	1%
	100%

Copper Expressed as Metallic 19%
U.S.D.A. Registration No. 3073-13

6-16-71
3073-13

"NEW JERSEY"



DIRECTIONS FOR USE

Surface to be painted should be dry and free of grease, loose paint and all foreign substances. Use scraper, wirebrush or sandpaper as required. Mix paint thoroughly and continue to stir during application to keep pigments in suspension. On new or bare wood, three coats are recommended. Two coats will suffice on painted surfaces in good condition. Allow 45 hours drying time between coats. The last coat should be applied 5 to 6 hours before launching. If necessary, thin with naphtha or mineral spirits.

CAUTION! **COMBUSTIBLE**—Keep away from heat and open flame. Use with adequate ventilation. Avoid contact with skin and breathing of vapor or spray mist. Harmful if swallowed. Close can after using and keep it out of the reach of children.

ONE GALLON (U.S.)

"New Jersey"

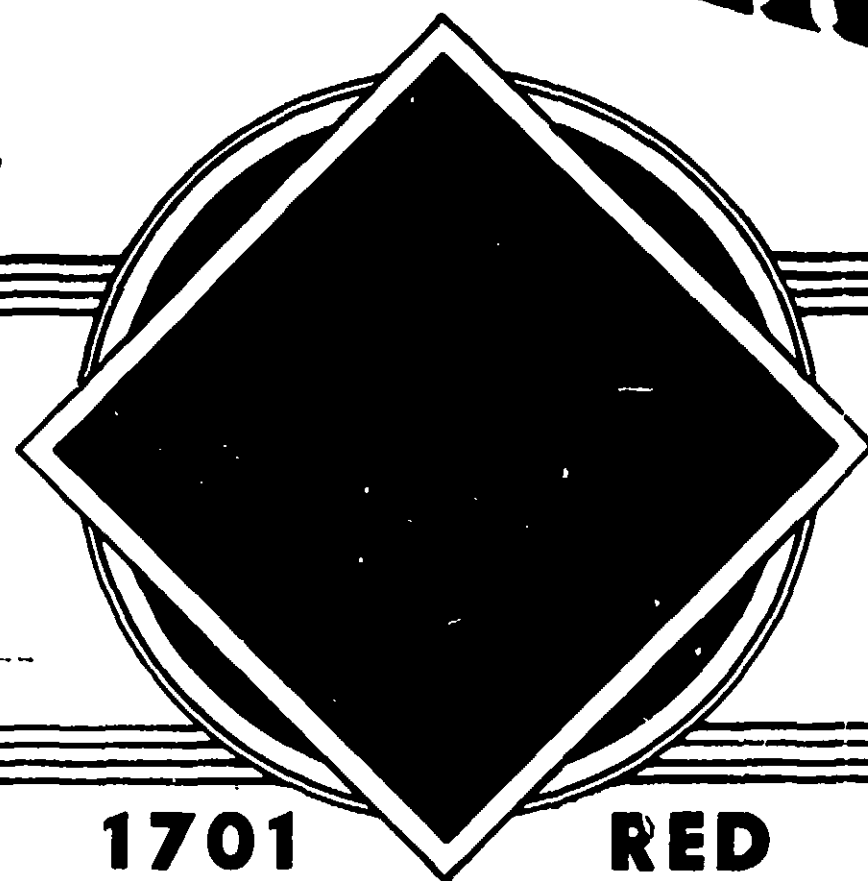
TRADE MARK

YACHT COPPER PAINT

SMOOTH -- BRIGHT

FINELY GROUND

AN ANTI-FOULING PAINT
FOR THE PRESERVATION OF
WOODEN BOAT BOTTOMS



REPELLENT TO BARNACLES,
TEREDO WORMS, SEAWEEDS AND
OTHER MARINE GROWTHS

1701

RED

ACTIVE INGREDIENT: Copper Oxide 24%; INERT INGREDIENTS 76%

CAUTION - Keep out of reach of
children. See cautions on back label.

1701
COMPOSITION BY WEIGHT

Copper Oxide	24%
Red Iron Oxide C.P.	10%
Zinc Oxide	4%
Silicates	7%
Resin, Pine Tar	24%
Petroleum Thinners	16%
Aromatic Hydrocarbons	15%
	100%

Copper Expressed as Metallic 19%
U.S.D.A. Registration No. 3073-13

6-16-71
3073-13

"NEW JERSEY"



DIRECTIONS FOR USE

Surface to be painted should be dry and free of grease, loose paint and all foreign substances. Use scraper, wirebrush or sandpaper as required. Mix paint thoroughly and continue to stir during application to keep pigments in suspension. On new or bare wood, three coats are recommended. Two coats will suffice on painted surfaces in good condition. Allow 4-6 hours drying time between coats. The last coat should be applied 5 to 6 hours before launching. If necessary, thin with naphtha or mineral spirits.

CAUTION! COMBUSTIBLE—Keep away from heat and open flame. Use with adequate ventilation. Avoid contact with skin and breathing of vapor or spray mist. Harmful if swallowed. Close can after using and keep it out of the reach of children.

U.S.)



ER PAINT

FINELY GROUND

**REPELLENT TO BARNACLES,
TEREDO WORMS, SEaweEDS AND
OTHER MARINE GROWTHS**

ED

INGREDIENTS 76%

of
del.

1701
COMPOSITION BY WEIGHT
Copper Oxide 24%
Red Iron Oxide C.P. 14%
Zinc Oxide 4%
Silicates 7%
Resin, Pine Tar 23%
Petroleum Thinners 14%
Aromatic Hydrocarbons 14%
100%
Copper Expressed as Metallic 19%
U.S.D.A. Registration No. 3073-13

6-16-71
3073-13

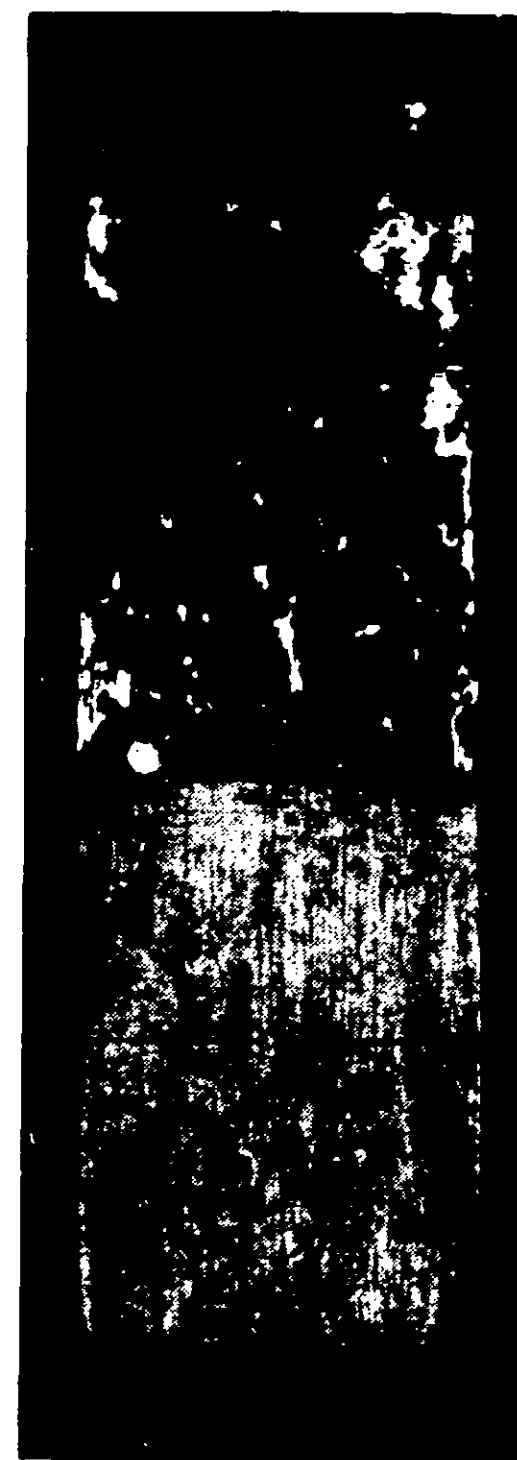
"NEW JERSEY" YACHT COPPER PAINT



DIRECTIONS FOR USE

Surface to be painted should be dry and free of grease, loose paint and all foreign substances. Use scraper, wirebrush or sandpaper as required. Mix paint thoroughly and continue to stir during application to keep pigments in suspension. On new or bare wood, three coats are recommended. Two coats will suffice on painted surfaces in good condition. Allow 4-6 hours drying time between coats. The last coat should be applied 5 to 6 hours before launching. If necessary, thin with naphtha or mineral spirits.

CAUTION! COMBUSTIBLE—Keep away from heat and open flame. Use with adequate ventilation. Avoid contact with skin and breathing of vapor or spray mist. Harmful if swallowed. Close can after using and keep it out of the reach of children.



REG. U. S. PAT. OFF.



REMARKABLE FACT

The board illustrated to the left was submersed for five months in Southern coastal waters (Port Royal, S. C.), having been half protected with "New Jersey" Yacht Copper Paint. On the upper unpainted end, you see the ravages of salt water worms, barnacles and in places, the complete destruction of the wood. This is positive evidence of the **anti-fouling** action obtained when "New Jersey" Yacht Copper Paint is used. Extremely toxic and highly repellent to sea life, it gives assured protection to wooden bottoms.

MADE IN U. S. A.

WOOLSEY MARINE INDUSTRIES, Inc.

"NEW JERSEY" PAINT DIVISION

New York, N.Y. 10017