

PRECAUTIONARY STATEMENT HAZARDS TO HUMANS AND DOMESTIC ANIMALS

CONTAINS PETROLEUM DISTILLATES

May be fatal if swallowed, inhaled or absorbed through skin. Causes skin and eye irritation. May cause severe burns. Do not get in eyes, on skin or on clothing. Do not breathe vapors or spray mist. Use with adequate ventilation. Do not take internally. Wash thoroughly after skin contact, before eating, drinking, use of tobacco products, or using restrooms. Avoid inhaling vapors. If inhalation of vapors cannot be avoided, applicators must wear a properly fitting, well-maintained half-mask canister or cartridge respirator which is MSHA/NIOSH-approved for polynuclear aromatics and organic vapors.

Applicators must wear gloves impervious to the wood treatment formulation in all situations where dermal contact is expected (for example, during the actual application process and when handling freshly treated wood).

Spray applicators must wear protective clothing (including overalls, jackets, gloves, head covering, and boots) impervious to the wood treatment formulation, and a respirator and goggles.

Railroad tie repair spray applicators operating a mechanized tie sprayer (dual adzer) must wear long-sleeved shirts and long pants or other suitable protective clothing. Applicators engaged in loading or maintenance of the spray equipment or other activities which may result in exposure to liquids, splashes or spills must wear long sleeved shirts, long pants and an impermeable apron.

Railroad tie repair spray applicators operating non-mechanized spray equipment must wear long sleeved shirts, long pants and an impermeable apron, gloves and boots and head covering impervious to the wood treatment formulation, and a respirator and goggles. Applicators engaged in loading or maintenance of the spray equipment or other activities which may result in exposure to liquids, splashes or spills must wear long sleeved shirts and long pants and an impermeable apron.

Applicators who apply creosote by other application processes (e.g., brush-on) must wear long sleeved shirts, long pants and an impermeable apron.

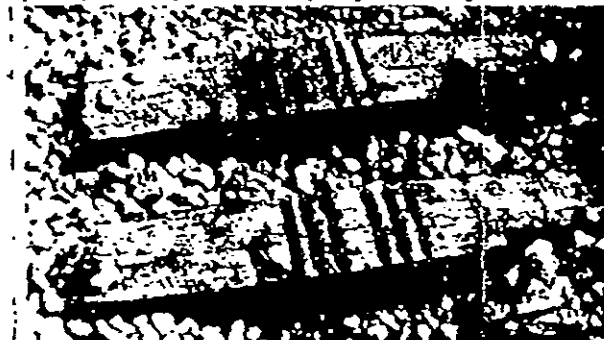
Protective clothing, workshoes or boots and equipment must not be taken home.

Applicators must not eat, drink or use tobacco products during those parts of the application process that may expose them to the wood treatment formulation.

Protective clothing must be changed when it shows signs of contamination, dispose of worn-out protective clothing and workshoes or boots in a general landfill, in the trash or in any other manner approved for pesticide disposal.

FOR PRESERVATIVE TREATMENT OF RAILROAD TIES & OTHER TIMBER **ADZ-LIFE** WOOD PRESERVING COMPOUND KILLS EXISTING DECAY — INHIBITS NEW FUNGUS GROWTH

For pole framing, piling applications and railroad tie repair use only. Not for household, farm, or non-pressure wood treatment plant use.
For sale only to pole framing, piling and railroad tie repair applicators.
For sale only in 10 gallon or larger containers. A package of two five gallon containers is permissible.



ACTIVE INGREDIENTS	
Sodium Fluoride.....	30.0%
Creosote.....	15.0%
INERT INGREDIENTS.....	55.0%
TOTAL.....	100.0%

CONTAINS PETROLEUM DISTILLATES

DANGER

KEEP OUT OF REACH OF CHILDREN

Note to User: As used on this label, the term "respirators" means properly fitting, well-maintained half-mask canister or cartridge respirators which are MSHA/NIOSH-approved for polynuclear aromatics and organic vapors. Examples of acceptable impermeable materials for protective clothing (e.g., gloves, overalls, head covering, jackets, and boots) required during application and handling of creosote are polyvinyl acetate (PVA), polyvinyl chloride (PVC), neoprene, and NBR (Buna-N).

SEE SIDE PANELS FOR ADDITIONAL PRECAUTIONARY STATEMENTS

EPA REG. NO. 3008-13

EPA EST. NO. 3008-NY-1

OSMOSE WOOD PRESERVING CO. OF AMERICA, INC. — BUFFALO, NY 14209

NET CONTENTS: 5 GALLONS

STATEMENT OF PRACTICAL TREATMENT

If on skin, wash with plenty of soap and water. Get medical attention.
If swallowed, call a physician or Poison Control Center. Drink 1 or 2 glasses of water and induce vomiting by touching back of throat with finger. Do not induce vomiting or give anything to an unconscious person.

If inhaled, remove victim to fresh air. Give artificial respiration or oxygen if needed. Get medical attention.

If in eyes, flush with plenty of water for 15 minutes. Get medical attention.

ENVIRONMENTAL HAZARDS

This product is toxic to fish and wildlife. Do not apply directly to water. Do not apply where runoff is likely to occur. Do not contaminate water by cleaning of equipment or disposal of wastes.

PHYSICAL AND CHEMICAL HAZARDS

COMBUSTIBLE. Do not use, pour or spill near heat or open flame. In case of fire, use water spray, foam, CO₂, or dry chemical. Plants or shrubs should be removed within 3 feet of treatment or protected with tar paper. Treated sawdust and other wood waste should not come in contact with domestic animals or be used so that they come in contact with useful living plants.

DIRECTIONS FOR USE:

GENERAL CLASSIFICATION

It is a violation of Federal law to use this product in a manner inconsistent with its label.

Applicators must complete an EPA-approved training program.

Machine application to ties—transfer ADZ-LIFE™ from containers to hopper of application machine. Adjust machine to apply 4.5 cubic inches of ADZ-LIFE to each tie plate area (9 cu. in. per tie). Treated area should be completely covered by tie plate.

Application to other timber—Remove all surface decay. Apply ADZ-LIFE to surface to be treated with paint or window brush, making liberal application to checks and splits. Apply material at a thickness of 1/4 in.

For application to end cuts, bolt holes, and hardware fabrication. Do not dilute or mix with other products. Ready for use.

STORAGE AND DISPOSAL

STORAGE: Do not contaminate water, food or feed by storage or disposal. Open dumping is prohibited. Do not reuse empty container.

PESTICIDE DISPOSAL: Pesticide wastes are toxic. Improper disposal of excess pesticide, spray mixture, or rinsate is a violation of Federal Law. If these wastes cannot be disposed of by use according to label instructions, contact your State Pesticide or Environmental Control Agency, or the Hazardous Waste representative at the nearest EPA Regional Office for guidance.

CONTAINER DISPOSAL: Triple rinse (or equivalent). Then offer for recycling or reconditioning or puncture and dispose of in a sanitary landfill, or by other approved state and local procedures.

ACCEPTED

JUN 17 1988

Under the Federal Insecticide,
Fungicide, and Rodenticide Act,
as amended, for the pesticide
registered under
EPA Reg. No. 3008-13