

**PRECAUTIONARY  
STATEMENT**

**HAZARDS TO HUMANS AND  
DOMESTIC ANIMALS**

**WARNING  
CONTAINS PETROLEUM DISTILLATES**

Use only with adequate ventilation. Do not breathe spray mists or vapors.

Harmful or fatal if swallowed or absorbed through skin.

Causes skin and eye irritation.

Do not get into eyes, on skin, or on clothing.

Wear goggles or face shield and rubber gloves when handling and rubber gloves and protective clothing when handling freshly treated lumber.

Wash thoroughly with soap and water after handling and before eating or smoking.

Remove contaminated clothing and wash before reuse.

Respiratory protection may be required.

Keep away from children, pets and livestock.

**STATEMENT OF PRACTICAL  
TREATMENT**

If on skin, wash with plenty of soap and water. Get medical attention.

If swallowed, do not cause vomiting. Call a physician immediately.

If inhaled, remove victim to fresh air. Give artificial respiration or oxygen if needed. Get medical attention.

If in eyes, flush with plenty of water for 15 minutes. Get medical attention.

**PHYSICAL AND CHEMICAL  
HAZARDS**

**COMBUSTIBLE** Do not use, pour or spill near heat or open flame. In case of fire, use water spray, foam, CO<sub>2</sub>, or dry chemical. Plants or shrubs should be removed within 3 feet of treatment or protected with tar paper. Treated saw dust and other wood waste should not come in contact with domestic animals or be used so that they come in contact with useful living plants.

**ENVIRONMENTAL HAZARDS**

Do not apply directly to water.

Do not contaminate water by cleaning of equipment or disposal of wastes.

**BEST DOCUMENT AVAILABLE**

**FOR PRESERVATIVE TREATMENT OF  
RAILROAD TIES & OTHER TIMBER**

# **ADZ-LIFE™**

## **WOOD PRESERVING COMPOUND**

**KILLS EXISTING DECAY  
INHIBITS NEW FUNGUS GROWTH**



**ACCE**

**SEP 15**

Under the Federal  
Fungicide, and Rod  
enticide Act, as amended, for the  
registered under  
EPA Reg. No. 36

**ACTIVE INGREDIENTS**

Sodium Fluoride .....	20.0%
Pentachlorophenol* .....	8.9%
Other chlorophenols and related compounds* .....	1.1%
Creosote .....	15.0%
<b>INERT INGREDIENTS .....</b>	<b>55.0%</b>
<b>TOTAL .....</b>	<b>100.0%</b>

**CONTAINS PETROLEUM DISTILLATES**

**Keep Out Of Reach Of Children  
WARNING**

EPA REG. NO. 3008-13

See Side Panel for Additional  
Precautionary Statements

EPA EST. NO. 2

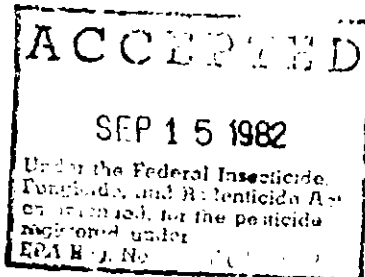
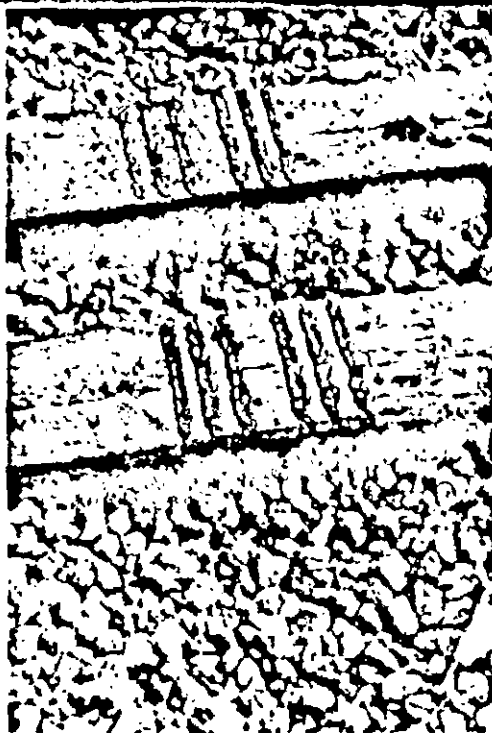
**OSMOSE WOOD PRESERVING CO. OF AMERICA, INC. BUFFALO, N.Y. 14209**

FOR PRESERVATIVE TREATMENT OF  
RAILROAD TIES & OTHER TIMBER

# ADZ-LIFE<sup>TM</sup>

## WOOD PRESERVING COMPOUND

KILLS EXISTING DECAY  
INHIBITS NEW FUNGUS GROWTH



### ACTIVE INGREDIENTS

Sodium Fluoride .....	2.0%
Pentachlorophenol .....	2.0%
Other chlorophenols and related compounds .....	1.0%
Creosote .....	19.0%
INERT INGREDIENTS .....	76.0%
TOTAL .....	100.0%

CONTAINS PETROLEUM DISTILLATES

Keep Out Of Reach Of Children

**WARNING**

3008-13

See Side Panel for Additional  
Precautionary Statements

EPA Reg. No. 3008-NY-1

MOSEWOOD PRESERVING CO. OF AMERICA, INC. - BUFFALO, NY 14203

### DESCRIPTION:

ADZ-LIFE<sup>TM</sup> is a water-soluble, fast-acting wood preservative. It is formulated with a combination of active ingredients which provide protection against decay, fungi, and insects. It is suitable for use on all types of wood, including railroad ties, and is applied by spraying or brushing. It is non-flammable and non-toxic to humans and animals.

### DIRECTIONS FOR USE:

It is a violation of Federal law to use this product in a manner inconsistent with its label.

For use on railroad ties, apply ADZ-LIFE<sup>TM</sup> to the end grain and the sides of the tie. For use on other wood, apply ADZ-LIFE<sup>TM</sup> to all surfaces. The treated wood should be kept dry until the preservative has dried. ADZ-LIFE<sup>TM</sup> is not intended for use on food or feed. It is not intended for use on painted or stained wood. It is not intended for use on wood that is already decayed or infested with insects.

### STORAGE AND DISPOSAL

**PROHIBITIONS:** Do not contaminate water, food or feed by storage or disposal.

**PESTICIDE DISPOSAL:** Pesticide spray mixture or rinsate that cannot be used according to label instructions must be disposed of according to Federal, State or local procedures under the Resource Conservation and Recovery Act.

**CONTAINER DISPOSAL:** Triple rinse (or equivalent) and offer for recycling or reconditioning, or dispose of in a sanitary landfill, or by other approved State and local procedures.

**GENERAL:** Consult Federal, state or local disposal authorities for approved alternative procedures.

Net Contents

BEST DOCUMENT AVAILABLE