



Use 30-60 Days after Receiving

Manufactured by
CAROLINA GARDEN AND FARM SERVICE, INC.
275 EAST MAIN AVENUE GASTONIA, NORTH CAROLINA

PROLIN\*
ANTI-COAGULANT RAT AND MICE BAIT
Prepared Expressly For Cooperative Campaigns

NET WEIGHT 4 POUNDS

THIS BAIT IS COMPOSED OF

Active Ingredients:

Warfarin 3-(a-acetylbenzyl)-4-hydroxycoumarin) 0.025%
N-(2-Quinolalanyl) Sulfanilamide Sulfaquinoxaline 0.025%

Inert Ingredients: 99.950%

(Not more than 0.01% Malathion insecticide)

EPA Reg. No. 2964-3

NOTICE

The above formula is recommended as an effective mixture for controlling Norway rats, Roof rats and House mice, however, the moist attractive parts of the corn, the germ and the corn oil lowers its keeping qualities. Consequently, this bait should be used while fresh for best results.

Do not reuse empty container. Destroy it by perforating or crushing.
Bury or discard in a safe place.

DIRECTIONS FOR USE

RATS Place 4 to 6 ounces of bait in dry containers next to burrows, in runways or where rats are accustomed to feed. Assure an uninterrupted supply of bait for a period of not less than 15 days and continue baiting until all signs of feeding have stopped. Replace stale, damp or moldy bait with fresh bait.

MICE Place tablespoonful amounts of bait in charcoal containers where mice are known to have been seen. Bait stations of 3 to 10 feet apart are recommended. Assure an uninterrupted supply of bait for a period of not less than 15 days.

IMPORTANT

Always use in bait traps. Always bait on trays or in bait stations for 15 to 30 days. Do not use in areas where children, pets, wild life or domestic animals are present.

CAUTION--KEEP OUT OF REACH OF CHILDREN

Protect birds, domestic animals and wildlife from bait.
Do not use on humans, livestock, animals, wild life or pet animals.
Do not use in areas where children, pets, wild life or domestic animals are present.
Do not use in areas where children, pets, wild life or domestic animals are present.

This bait contains Warfarin, an anti-coagulant chemical that reduces the clotting ability of the blood and, upon repeated feedings, causes fatal bleeding. It also contains an anti-folate agent which hinders the formation of folic acid in the body, an anti-folate for warfarin.

This bait should be placed in areas inaccessible to children, pets, wild life or domestic animals in a tamper proof container.

MAY 6 1972

UNDER THE FEDERAL INSECTICIDE  
FUNGICIDE AND RODENTICIDE ACT  
FOR ECONOMIC POISON REGISTERED  
ED UNDER NO. 2727 - SUBJECT  
TO ATTACHED COMMENTS

**CAUTION: KEEP OUT OF REACH OF CHILDREN.** Protect people and domestic animals from bait. If swallowed by humans, domestic animals, or pets, this material may reduce the clotting ability of the blood and cause bleeding. In such case, intravenous and oral administration of vitamin K combined with blood transfusions are indicated as in the case of hemorrhage caused by overdoses of bishydroxycoumarin. This rodenticide contains Warfarin, an anticoagulant chemical that reduces the clotting ability of the blood and, upon repeated feedings, causes fatal hemorrhage in rats and mice. It also contains an antibacterial agent which inhibits bacteria that produce vitamin K, an antidote for warfarin. **Baits should be placed in areas inaccessible to children, pets, wildlife and domestic animals or in tamper proof bait boxes.**

## CAROLINA'S RAT BAIT

**SUGGESTED USE:** Place 2 to 4 tablespoonsful of contents of this package in locations frequented by rats and mice and protect from children, dogs, cats and livestock by means of bait boxes or cages where necessary. CAROLINA'S RAT BAIT should be replenished as consumed. Use no decomposed, mouldy or sour bait.

Where a continuous source of infestation prevails from nearby dumps or fields, permanent bait stations should be used and CAROLINA'S RAT BAIT replenished as needed.

This package may be used as an individual bait station. Punch out the perforated space on back of box and nail box to the floor or on a board.

### DIRECTIONS FOR USE

**RATS** — Place 4 to 6 ounces of bait in dry containers next to burrows, in runways, or where rats are accustomed to feed. Assure an uninterrupted supply of bait for a period of not less than 12 days and continue baiting until all signs of feeding have stopped. Replace stale, damp or moldy baits with fresh bait.

**MICE** — Place tablespoonful amounts of bait in shallow containers where mice or signs of mice have been seen. Bait stations at intervals of 8 to 12 feet are recommended. Assure an uninterrupted supply of bait for a period of not less than 15 days.

### IMPORTANT NOTICE

BAITING SHOULD CONTINUE UNTIL COMPLETE LACK OF FEEDING IS NOTED.

Baits should be placed in areas inaccessible to children, pets, wildlife and domestic animals or in tamper proof bait boxes.

**CAUTION: KEEP OUT OF REACH OF CHILDREN.** Protect pets and domestic animals from bait. If swallowed by humans, domestic animals, or pets, this material may reduce the clotting ability of the blood and cause bleeding. In such case, intravenous and oral administration of vitamin K combined with blood transfusions are indicated as in the case of hemorrhage caused by overdoses of bishydroxycoumarin. This rodenticide contains Warfarin, an anticoagulant chemical that reduces the clotting ability of the blood and, upon repeated feedings, causes fatal hemorrhage in rats and mice. It also contains an antibacterial agent which inhibits bacteria that produce vitamin K, an antidote for warfarin.

## CAROLINA'S RAT BAIT

DESTROY  
CONTAINER  
BY  
BURNING

# CAROLINA'S RAT BAIT

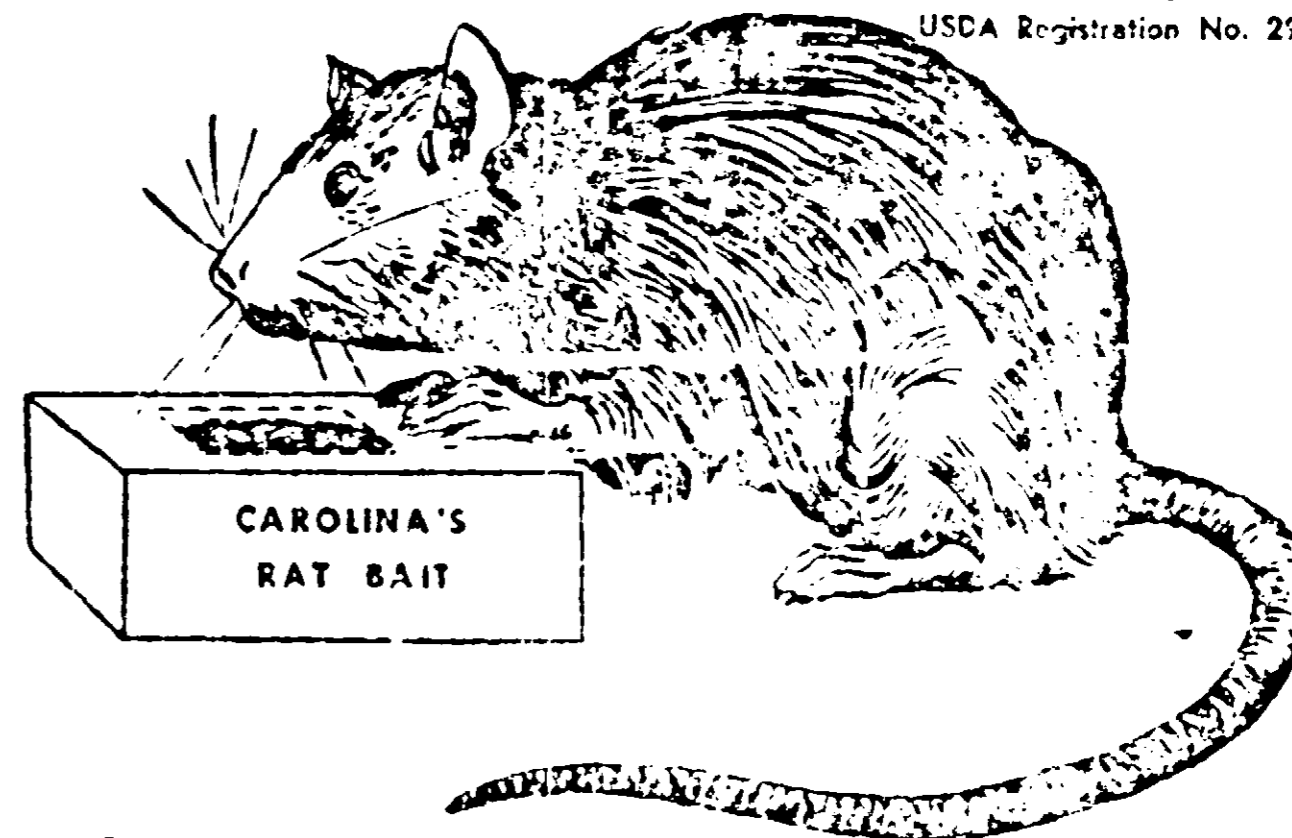
### ACTIVE INGREDIENTS

Warfarin (3-(4-acetyloxybenzyl)-4-hydroxycoumarin) ... 0.025%  
N-(2-quinoxalimyl) sulfanilamide (sulfaquinolaxaline) ... 0.025%

### INERT INGREDIENTS

... 99.950%

USDA Registration No. 2964-4



**CAUTION: KEEP OUT OF REACH OF CHILDREN.**  
See side panel for additional cautions.

CAROLINA GARDEN AND FARM SERVICE, Inc., 279 E. MAIN AVE., GASTONIA, N.C.

**CAROLINA'S RAT BAIT**