

PRECAUTIONARY STATEMENTS

HAZARDS TO HUMANS AND DOMESTIC ANIMALS:

DANGER

POISONOUS IF SWALLOWED, INHALED OR ABSORBED THROUGH SKIN. RAPIDLY ABSORBED THROUGH SKIN. REPEATED INHALATION OR SKIN CONTACT MAY, WITHOUT SYMPTOMS, PROGRESSIVELY INCREASE SUSCEPTIBILITY TO PARATHION POISONING.

This product can kill you if swallowed even in small amounts: spray mist or dust may be fatal if swallowed. Poisonous if touched by hands or spilled or splashed on skin, in eyes or on clothing (liquid goes through clothes). Breathing vapors, spray mist or dust may be fatal. Workers entering treated fields within 48 hours must wear protective clothing.

STATEMENT OF PRACTICAL TREATMENT

Call a doctor (physician), clinic or hospital immediately. Explain that victim has been exposed to parathion and describe his condition.

If inhaled and breathing has stopped, start artificial respiration immediately and maintain until doctor sees victim.

If Swallowed — Drink one or two glasses of water and induce vomiting by touching back of throat with finger. Do not induce vomiting or give anything by mouth to an unconscious person. Get medical attention.

If in eyes — Flush with plenty of water and get medical attention immediately.

If on skin — immediately wash with soap and water and get medical attention.

CHEMICAL AND PHYSICAL HAZARDS

DO NOT HEAT THIS MATERIAL ABOVE 131° F (55° C). STORE AT TEMPERATURES ABOVE 65° F (18.3° C) TO AVOID CRYSTALLIZATION.

75MP-3

RESTRICTED USE PESTICIDE:

For retail sale to and use only by Certified Applicators or persons under their direct supervision and only for those uses covered by the Certified Applicator's certification.

Wilbur-Ellis

**METHYL PARATHION
7.5 SPRAY**

ACTIVE INGREDIENTS	By Wt.
*O, O-dimethyl O-p-nitrophenyl phosphorothioate	65.9%
Related Compounds	3.7%
Xylene Range Aromatic Solvent	15.2%
INERT INGREDIENTS	15.2%
TOTAL	100.0%

1 gallon contains 7 1/2 lbs. of *Methyl Parathion.
E.P.A. Reg. No. 2935

Est. No. 33691-AZ-1

STOP - READ LABEL BEFORE USING!

POISON
See Side Panels
for Antidote &
Precautions



DANGER
Keep Out of
Reach of
Children

Wilbur-Ellis

FRESNO • LOS ANGELES • GLENDALE, AZ • PORTLAND • SEATTLE

USE ONLY
PROTECTOR

(1) Wear v
or rub
(3) We
by the
istratic
and b
Safety
CFR 1
rubber

Keep all
from treat
drift.

Do not ru
sick in or
away. Cal
immediat
posed to
After first
Section) a
to clinic c
IMPORTANT
with soap
and arms
eating or
AFTER WC
Shower, c
clothes w
noted clo
fective eq
use. Resp
placed a
respirator.

NOT
IN (

PESTICIDE:
 applicators or persons under their direct
 by the Certified Applicator's certifica-

Ellis
PARATHION
SPRAY

	By Wt.
phosphorothioate	65.9%
	3.7%
	15.2%
TOTAL	100.0%

Parathion.
 Est. No. 33691-AZ-1

BEFORE USING!



DANGER

Keep Out of
 Reach of
 Children

YOU

Ellis

E, AZ • PORTLAND • SEATTLE

**USE ONLY WHEN WEARING THE FOLLOWING
 PROTECTIVE EQUIPMENT AND CLOTHING**

- (1) Wear waterproof pants, coat, hat, rubber boots or rubber overshoes. (2) Wear safety goggles. (3) Wear a pesticide respirator jointly approved by the Mining Enforcement and Safety Administration (formerly the U.S. Bureau of Mines) and by the National Institute for Occupational Safety and Health under the provisions of 30 CFR Part 11. (4) Wear heavy duty, natural rubber gloves.

WORK SAFETY RULES

Keep all unprotected persons and children away from treated area or where there is danger of drift.

Do not rub eyes or mouth with hands. If you feel sick in any way, STOP work and get help right away. Call a doctor (physician), clinic or hospital—immediately. Explain that the victim has been exposed to parathion and describe his condition. After first aid is given (see First Aid Treatment Section) and if a doctor cannot come, take victim to clinic or hospital.

IMPORTANT! Before removing gloves, wash them with soap and water. Always wash hands, face and arms with soap and water before smoking, eating or drinking.

AFTER WORK, take off all work clothes and shoes. Shower, using soap and water. Wear only clean clothes when leaving job. Do not wear contaminated clothing. Wash protective clothing and protective equipment with soap and water after each use. Respirator should be cleaned and filter replaced according to instructions included with respirator.

**NOT FOR USE OR STORAGE
 IN OR AROUND THE HOME**

POISON SIGNS (Symptoms)

Parathion is a very dangerous poison. It rapidly enters the body on contact with all skin surfaces and eyes. Clothing wet with this material must be removed immediately. Exposed persons must receive prompt medical treatment or they may die. Some of the signs and symptoms of poisoning are: Headache, nausea, vomiting, cramps, weakness, blurred vision, pin-point pupils, tightness in chest, labored breathing, nervousness, sweating, watering of eyes, drooling or frothing of mouth and nose, muscle spasms and coma.

ENVIRONMENTAL HAZARDS

This product is toxic to fish, birds and other wildlife. Birds and other wildlife in treated areas may be killed. Do not apply directly to lakes, streams, ponds, tidal marshes and estuaries. Do not apply where runoff is likely to occur. Do not apply when weather conditions favor drift from areas treated. Do not contaminate water by cleaning of equipment, or disposal of wastes. Shrimp and crab may be killed at application rates recommended on this label. Do not apply where these are important resources. Apply this product only as specified on this label. This water must not be used for recreational, irrigation or domestic uses.

This product is highly toxic to bees exposed to direct treatment or residues on crops. Protective information may be obtained from your Cooperative Agricultural Extension Services.

NOTE TO PHYSICIAN

Antidote—administer atropine sulfate in large doses, TWO to FOUR mg. intravenously or intramuscularly as soon as cyanosis is overcome. Repeat at 5 to 10 minute intervals until signs of atropinization appear. 2-PAM chloride is also antidotal and may be administered in conjunction with atropine. **DO NOT GIVE MORPHINE OR TRANQUILIZERS.** Parathion is a strong cholinesterase inhibitor affecting the central and peripheral nervous systems and producing local and respiratory depression. At first sign of pulmonary edema, patient should be given supplemental oxygen and treated symptomatically. Continued absorption of the poison may occur and fatal relapses have been reported after initial improvement; **VERY CLOSE SUPERVISION OF THE PATIENT IS INDICATED FOR AT LEAST 48 HOURS.**

DIRECTIONS FOR USE

It is a violation of Federal law to use this product in a manner inconsistent with its labeling.

Re-entry workers entering treated fields within 48 hours must wear protective clothing.

POST TREATED AREA — Consult your State Agricultural Extension Service or Experiment Station regarding posting treated areas.

CROP USE DIRECTIONS — Use only according to attached label booklet instructions.

STORAGE AND DISPOSAL

1. **Prohibitions** — Do not contaminate water, food, or feed by storage or disposal. Open dumping is prohibited.
2. **Pesticide Disposal** — Pesticide spray mist or rinse water that cannot be used according to label instructions must be disposed of according to Federal or approved state procedures under Subtitle C of the Resource Conservation and Recovery Act.
3. **Container Disposal** — Triple rinse (or equivalent). Then offer for recycling or reconditioning, or puncture and dispose of in a sanitary landfill, or by other approved state and local procedures.
4. **General** — Consult Federal, State or local Disposal Authorities for additional restrictions and approved alternatives.

LEFT half of two-part label

METHYL PARATHION 7.5 SPRAY
 PART ONE

METHYL PARATHION 7.5 SPRAY

DIRECTIONS FOR USE (cont'd)

DIRECTIONS FOR MIXING AND SPRAYING

Mix in water with agitation; agitate while spraying. Apply to row and field crops in 5 to 20 gals. of water per acre by ground spray rig or 1 to 5 gals. of water by airplane.

COMPATIBILITY - Avoid combinations containing highly alkaline materials such as lime-sulfur solutions or lime. Alkaline compounds will reduce the effectiveness of Methyl Parathion.

ALFALFA: Alfalfa Weevil (larvae) - $\frac{1}{2}$ to $\frac{1}{2}$ pint per acre. (Apply when 75% terminals show feeding, when buds and shoots appear ragged, or when the larvae count reaches 25 per sweep. Aphids (including Pea Aphid and Spotted Alfalfa Aphid) - $\frac{1}{4}$ to $\frac{1}{2}$ pint per acre. (For Spotted Alfalfa Aphid, apply early in spring.) Armyworms, Cutworms (Climbing), Flea Beetles, Grasshoppers, Leafhoppers and Thrips - $\frac{1}{4}$ to $\frac{1}{2}$ pint per acre. Alfalfa Caterpillars, Alfalfa Weevil (adult), (Refer also to Egyptian Weevil), Clover Leaf Weevil and Webworms - $\frac{1}{2}$ pint per acre. Lygus Bugs, Mites and Stink Bugs - $\frac{1}{4}$ to $\frac{1}{2}$ pint per acre. Egyptian Alfalfa Weevil - $\frac{1}{2}$ to 1 pint per acre. Do not apply within 15 days of harvest.

Alfalfa Seed Chalcid (seed crop only) - $\frac{1}{4}$ to $1\frac{1}{2}$ pints per acre. Do not apply within 20 days of harvest.

BARLEY: Thrips (Barley) - $\frac{1}{4}$ to $\frac{1}{2}$ pint per acre. Cutworms (Climbing), False Chinch Bug, Leafhopper, Mites (Brown Wheat) and (Winter Grain) - $\frac{1}{4}$ to $\frac{1}{2}$ pint per acre. Aphids (including Greenbug) - $\frac{1}{4}$ to $\frac{1}{2}$ pint per acre. Apply in early spring for Greenbug control. Armyworms (to 3rd instar), Black Grass Bugs and Stink Bugs - $\frac{1}{4}$ to $\frac{1}{2}$ pint per acre. Chinch Bugs and Say Stink Bugs - $\frac{1}{2}$ pint per acre.

Do not apply within 15 days of harvest.

COTTON: Fleahoppers (including Cotton Fleahopper) and Thrips - $\frac{1}{4}$ to $\frac{1}{2}$ pint per acre. (For Thrips - Apply before or during the 4-leaf stage and repeat 1 to 3 times at 7- to 10-day intervals.) Grasshoppers - $\frac{1}{4}$ pint per acre. Cotton Leafworm and Garden Webworm - $\frac{1}{4}$ to $\frac{1}{2}$ pint per acre. Lygus Bugs, Spider Mites (including Desert Spider Mites and Two-Spotted Spider Mites) - $\frac{1}{4}$ to 1 pint per acre. False Chinch Bug and Southern Green Stink Bug - $\frac{1}{2}$ pint per acre. Aphids (including Cotton Aphid), Fall Armyworms (to 3rd instar), Cotton Leafperforator, Cutworms and Cabbage Loopers - $\frac{1}{2}$ to 1 pint per acre. (For Aphids (including Cotton Aphid): Apply when Aphids appear in buds and on leaves of seedlings or when honeydew appears on older plants.) Boll Weevil - $\frac{1}{2}$ to 3 pints per acre. (For early season control of over-wintering Boll Weevils, apply as early as the 2- to 4-leaf stage and repeat 1 to 3 times at 7- to 10-day intervals. For a mid-season control, apply at the start of squaring or after 10 to 25% of the first squares are punctured and repeat at 3- to 6-day intervals as needed or until the top bolls are full grown. Repeat at 3-day intervals during the major fruiting season, and periods of heavy weevil migration.) Saltmarsh Caterpillars, Stink Bugs and Leafrollers - 1 pint per acre. Bollworms - 1 to 3 pints per acre. Armyworms - 1 to 2 pints per acre.

RIGHT half
of two-
part label

COTTON (cont'd)

Do not apply within 7 days of harvest or handpicking. Workers entering fields within 24 hours after application should wear protective clothing.

LETTUCE: Aphids, Armyworms, Flea Beetles, Imported Cabbageworms, Leafhoppers and Mites - $\frac{1}{2}$ to 1 pint per acre. (Do not apply within 21 days of harvest.) Cabbage Loopers and Plant Bugs - 1 pint per acre. (Do not apply within 21 days of harvest.)

SORGHUM: Corn Leaf Aphids and Spider Mites - $\frac{1}{2}$ pint per acre. Sorghum Midges - $\frac{1}{2}$ to 1 pint per acre. Apply when approximately 90% of the heads have completely emerged from the boot or not later than the start of blooming. Greenbug Aphid - $\frac{1}{4}$ pint per acre. Aphids - 1 pint per acre.

Do not apply within 21 days of harvest. Leaf injury may occur on some hybrid varieties. Do not use wetting agents as more severe injury may occur. Spray a few rows a week or so before booting to test effects upon plants.

SUGAR BEETS: Armyworms, Fall Armyworms, Cutworms (including Climbing Cutworms), Flea Beetles, Grasshoppers, Leafhoppers, Mites and Sugar Beet Webworms - $\frac{1}{4}$ to $\frac{1}{2}$ pint per acre. Lygus Bugs, Stink Bugs and Webworms - $\frac{1}{2}$ pint per acre.

Do not apply within 20 days of harvest. If tops are going to be fed to cattle, do not apply within 60 days of harvest.

TOMATOES: Tomato Russet Mites - $\frac{1}{4}$ to $\frac{1}{2}$ pint per acre. Aphids and Armyworms - $\frac{1}{4}$ to 1 pint per acre. Leafhoppers and Mites - $\frac{1}{2}$ to 1 pint per acre. Potato Psyllid - $\frac{1}{4}$ to $1\frac{1}{2}$ pints per acre. Plant Bugs - 1 pint per acre. Cabbage Looper - 1 to $1\frac{1}{2}$ pints per acre.

Do not apply within 10 days of harvest through 1 pint. Do not apply within 15 days of harvest from 1 pint through 3 pints.

WHEAT: Brown Wheat Mites - $\frac{1}{4}$ to $\frac{1}{2}$ pint per acre. Aphids (including Greenbug) - $\frac{1}{4}$ to $\frac{1}{2}$ pint per acre. Barley Thrips - $\frac{1}{4}$ to $\frac{1}{2}$ pint per acre. Leafhoppers - $\frac{1}{4}$ to $\frac{1}{2}$ pint per acre. Armyworms (to 3rd instar), Winter Grain Mites and Stink Bugs - $\frac{1}{4}$ to $\frac{1}{2}$ pint per acre. Climbing Cutworms - $\frac{1}{2}$ pint per acre. Chinch Bugs, False Chinch Bugs and Say Stink Bugs - $\frac{1}{2}$ pint per acre.

Do not apply within 15 days of harvest from $\frac{1}{2}$ pint through $1\frac{1}{2}$ pints.

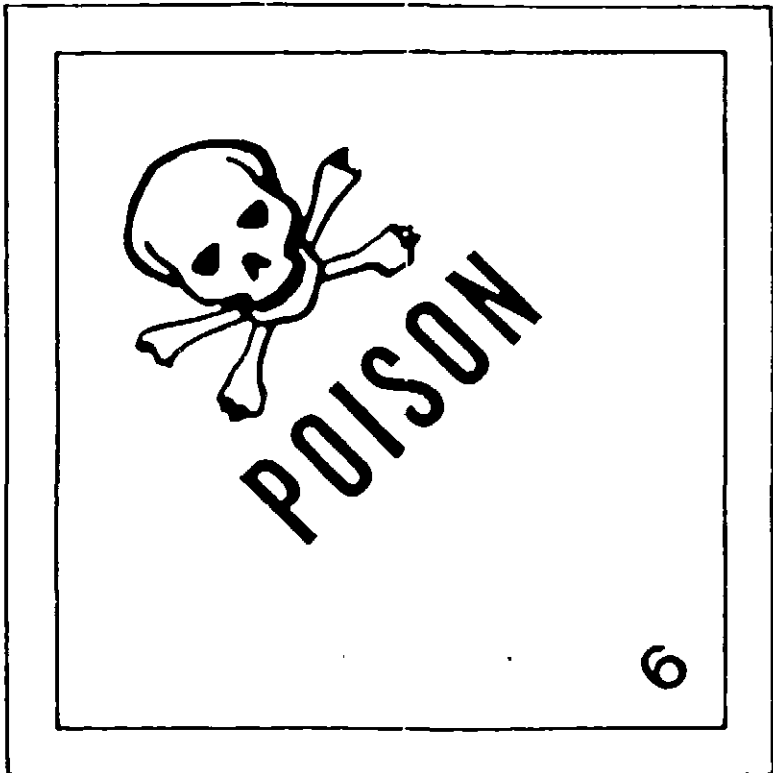
F-682

NOTICE: The statements made on this label are believed to be true and accurate, but because of conditions of use which are beyond our control, WILBUR-ELLIS COMPANY does not make, nor does it authorize any agent or representative to make, any warranty, guaranty or representation, express or implied, concerning this material or the use thereof, except in conformity with the statements on the label. Neither WILBUR-ELLIS COMPANY nor the seller shall be held responsible in any manner for any personal injury or property damage or loss resulting to the buyer or to the other person from handling, storage or use of this material, not in accordance with directions. The buyer assumes all risk and liability resulting from improper handling, storage or use and accepts and uses this material on these conditions.



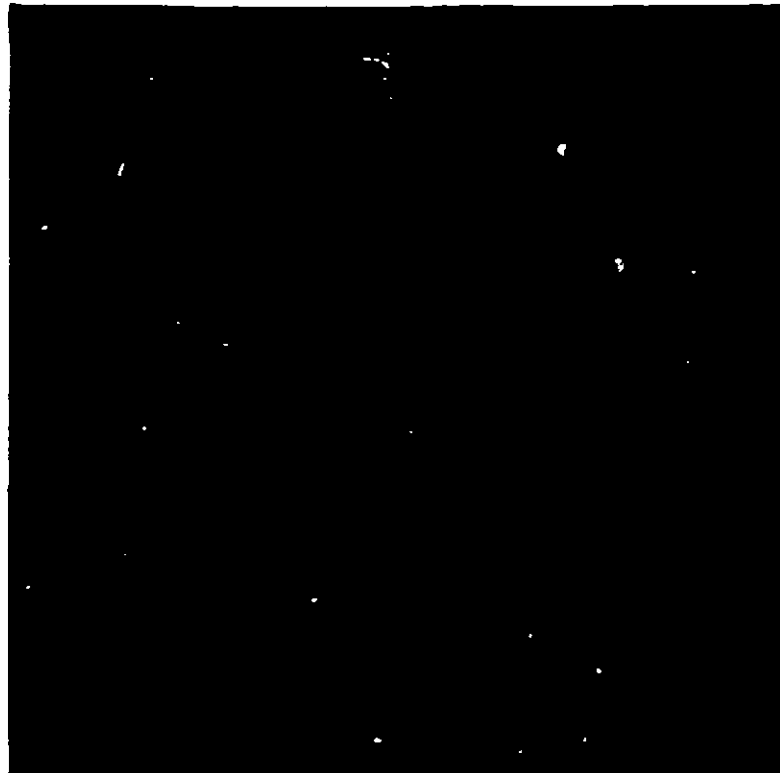
METHYL PARATHION
NA

METHYL PARATHION
PART TWO



**METHYL PARATHION MIXTURE, LIQUID
NA 2783**

"FLASH POINT IS 73° F OR HIGHER"



**In Case of Emergency, Call CHEMTREC
800/424-9300**

*METHYL PARATHION 75 SPRAY
PART TWO*

U.S. ENVIRONMENTAL PROTECTION AGENCY OFFICE OF PESTICIDES PROGRAMS REGISTRATION DIVISION (HH-547) WASHINGTON, D.C. 20460	EPA REGISTRATION NO.	DATE OF ISSUANCE
	TERM OF ISSUANCE	
	NAME OF PESTICIDE PRODUCT	

NOTICE OF PESTICIDE: REGISTRATION RERE REGISTRATION
(Under the Federal Insecticide, Fungicide, and Rodenticide Act, as amended)

NAME AND ADDRESS OF REGISTRANT (Include ZIP code)

NOTE: Changes in labeling formula differing in substance from that accepted in connection with this registration must be submitted to and accepted by the Registration Division prior to use of the label in commerce. In any correspondence on this product always refer to the above U.S. EPA registration number.

On the basis of information furnished by the registrant, the above named pesticide is hereby Registered/Reregistered under the Federal Insecticide, Fungicide, and Rodenticide Act.

A copy of the labeling accepted in connection with this Registration/Reregistration is returned herewith.

Registration is in no way to be construed as an indorsement or approval of this product by this Agency. In order to protect health and the environment, the Administrator, on his motion, may at any time suspend or cancel the registration of a pesticide in accordance with the Act. The acceptance of any name in connection with the registration of a product under this Act is not to be construed as giving the registrant a right to exclusive use of the name or to its use if it has been covered by others.

ATTACHMENT IS APPLICABLE

SIGNATURE OF APPROVING OFFICIAL	DATE
---------------------------------	------



PRECAUTIONARY STATEMENTS

**HAZARDS TO HUMANS AND DOMESTIC ANIMALS:
DANGER**

Poisonous If Swallowed, Inhaled or Absorbed Through Skin. Rapidly Absorbed Through Skin. Repeated Inhalation or Skin Contact May, Without Symptoms, Progressively Increase Susceptibility to Parathion Poisoning.



This product can kill you if swallowed even in small amounts: spray mist or dust may be fatal if swallowed. Poisonous if touched by hands or spilled or splashed on skin, in eyes or on clothing (liquid goes through clothes). Breathing vapors, spray mist or dust may be fatal. Workers entering treated fields within 48 hours must wear protective clothing.

STATEMENT OF PRACTICAL TREATMENT

Call a doctor (physician), clinic or hospital immediately. Explain that victim has been exposed to parathion and describe his condition.

If inhaled and breathing has stopped, start artificial respiration immediately and maintain until doctor sees victim.

If Swallowed — Drink one or two glasses of water and induce vomiting by touching back of throat with finger. Do not induce vomiting or give anything by mouth to an unconscious person. Get medical attention.

If in eyes — Flush with plenty of water and get medical attention immediately.

If on skin — Immediately wash with soap and water and get medical attention.

CHEMICAL AND PHYSICAL HAZARDS

DO NOT HEAT THIS MATERIAL ABOVE 131° F (55° C). STORE AT TEMPERATURES ABOVE 65° F (18.3° C) TO AVOID CRYSTALLIZATION.

75MP-3

RESTRICTED USE PESTICIDE:
For retail sale to and use only by Certified Applicators or persons under their direct supervision and only for those uses covered by the Certified Applicator's certification.

Wilbur-Ellis

**METHYL PARATHION
7.5 SPRAY**

ACTIVE INGREDIENTS	By Wt.
*O, O-dimethyl O-p-nitrophenyl phosphorothioate	65.9%
Related Compounds	3.7%
Xylene Range Aromatic Solvent	15.2%
INERT INGREDIENTS	15.2%
TOTAL	100.0%

1 gallon contains 7 1/2 lbs. of *Methyl Parathion.
E.P.A. Reg. No. 2935

Est. No. 33691-AZ-1

STOP - READ LABEL BEFORE USING!

POISON
See Side Panels
for Antidote &
Precautions



DANGER
Keep Out of
Reach of
Children

Wilbur-Ellis

FRESNO • LOS ANGELES • GLENDALE, AZ • PORTLAND • SEATTLE

USE ONLY WHEN PROTECTIVE EQUIPMENT IS USED

(1) Wear waterproof or rubber overalls
(2) Wear a pest control respirator (formaldehyde) and by the National Safety and Health Council, CFR Part 11, rubber gloves.

WORK

Keep all unprotected from treated area drift.

Do not rub eyes or get sick in any way. Wash away. Call a doctor immediately. Explain exposure to parathion.

After first aid is given, call a doctor (Section) and if a victim to clinic or hospital.

IMPORTANT! Before using with soap and water and arms with soap eating or drinking.

AFTER WORK, take a shower, using soap. Wash clothes when leaving treated clothing. Wash protective equipment before use. Respirator should be placed according to manufacturer's instructions.

NOT FOR USE IN OR AROUND

DE:
Persons under their direct
and Applicator's certifica-

PHION

ate	By Wt.
.....	65.9%
.....	3.7%
.....	15.2%
.....	15.2%
TOTAL	100.0%

Est. No. 33691-AZ.1

RE USING!

DANGER

Keep Out of
Reach of
Children

PHOENIX - SEATTLE

USE ONLY WHEN WEARING THE FOLLOWING PROTECTIVE EQUIPMENT AND CLOTHING

- (1) Wear waterproof pants, coat, hat, rubber boots or rubber overshoes. (2) Wear safety goggles. (3) Wear a pesticide respirator jointly approved by the Mining Enforcement and Safety Administration (formerly the U.S. Bureau of Mines) and by the National Institute for Occupational Safety and Health under the provisions of 30 CFR Part 11. (4) Wear heavy duty, natural rubber gloves.

WORK SAFETY RULES

Keep all unprotected persons and children away from treated area or where there is danger of drift.

Do not rub eyes or mouth with hands. If you feel sick in any way, STOP work and get help right away. Call a doctor (physician), clinic or hospital—immediately. Explain that the victim has been exposed to parathion and describe his condition. After first aid is given (see First Aid Treatment Section) and if a doctor cannot come, take victim to clinic or hospital.

IMPORTANT! Before removing gloves, wash them with soap and water. Always wash hands, face and arms with soap and water before smoking, eating or drinking.

AFTER WORK, take off all work clothes and shoes. Shower, using soap and water. Wear only clean clothes when leaving job. Do not wear contaminated clothing. Wash protective clothing and protective equipment with soap and water after each use. Respirator should be cleaned and filter replaced according to instructions included with respirator.

**NOT FOR USE OR STORAGE
IN OR AROUND THE HOME**

POISON SIGNS (Symptoms)

Parathion is a very dangerous poison. It rapidly enters the body on contact with all skin surfaces and eyes. Clothing wet with this material must be removed immediately. Exposed persons must receive prompt medical treatment or they may die. Some of the signs and symptoms of poisoning are: Headache, nausea, vomiting, cramps, weakness, blurred vision, pin-point pupils, tightness in chest, labored breathing, nervousness, sweating, watering of eyes, drooling or frothing of mouth and nose, muscle spasms and coma.

ENVIRONMENTAL HAZARDS

This product is toxic to fish, birds and other wildlife. Birds and other wildlife in treated areas may be killed. Do not apply directly to lakes, streams, ponds, tidal marshes and estuaries. Do not apply where runoff is likely to occur. Do not apply when weather conditions favor drift from areas treated. Do not contaminate water by cleaning of equipment, or disposal of wastes. Shrimp and crab may be killed at application rates recommended on this label. Do not apply where these are important resources. Apply this product only as specified on this label. This water must not be used for recreational, irrigation or domestic uses.

This product is highly toxic to bees exposed to direct treatment or residues on crops. Protective information may be obtained from your Cooperative Agricultural Extension Services.

NOTE TO PHYSICIAN

Antidote—administer atropine sulfate in large doses, TWO to FOUR mg. intravenously or intramuscularly as soon as cyanosis is overcome. Repeat at 5 to 10 minute intervals until signs of atropinization appear. 2-PAM chloride is also antidotal and may be administered in conjunction with atropine. **DO NOT GIVE MORPHINE OR TRANQUILIZERS.** Parathion is a strong cholinesterase inhibitor affecting the central and peripheral nervous systems and producing local and respiratory depression. At first sign of pulmonary edema, patient should be given supplemental oxygen and treated symptomatically. Continued absorption of the poison may occur and fatal relapses have been reported after initial improvement; **VERY CLOSE SUPERVISION OF THE PATIENT IS INDICATED FOR AT LEAST 48 HOURS.**

DIRECTIONS FOR USE

It is a violation of Federal law to use this product in a manner inconsistent with its labeling.

Re-entry workers entering treated fields within 48 hours must wear protective clothing.

POST TREATED AREA — Consult your State Agricultural Extension Service or Experiment Station regarding posting treated areas.

CROP USE DIRECTIONS — Use only according to attached label booklet instructions.

STORAGE AND DISPOSAL

1. **Prohibitions —** Do not contaminate water, food, or feed by storage or disposal. Open dumping is prohibited.
2. **Pesticide Disposal —** Pesticide spray mixtures or rinse water that cannot be used according to label instructions must be disposed of according to Federal or approved state procedures under Subtitle C of the Resource Conservation and Recovery Act.
3. **Container Disposal —** Triple rinse (or equivalent). Then offer for recycling or reconditioning, or puncture and dispose of in a sanitary landfill, or by other approved state and local procedures.
4. **General —** Consult Federal, State or Local Disposal Authorities for additional restrictions and approved alternatives.

LEFT half of two-part label →

METHYL PARATHION 75 SPRAY
PART ONE

METHYL PARATHION 7.5 SPRAY

DIRECTIONS FOR USE (cont'd)

DIRECTIONS FOR MIXING AND SPRAYING

Mix in water with agitation; agitate while spraying. Apply to row and field crops in 5 to 20 gals. of water per acre by ground spray rig or 1 to 5 gals. of water by airplane.

COMPATIBILITY - Avoid combinations containing highly alkaline materials such as lime-sulfur solutions or lime. Alkaline compounds will reduce the effectiveness of Methyl Parathion.

ALFALFA: Alfalfa Seed Chalcid (seed crop only) - 1/4 to 1/2 pint per acre. Do not apply within 20 days of harvest.
Weevil (larvae) - 1/4 to 1/2 pint per acre. (Apply when heads show feeding, when buds and shoots appear and the larvae count reaches 25 per sweep. Aphids (including Greenbug Aphid and Spotted Alfalfa Aphid) - 1/4 to 1/2 pint per acre. (For Spotted Alfalfa Aphid, apply early in spring.) Armyworms, Cutworms (Climbing), Flea Beetles, Grasshoppers, Leafhoppers and Thrips - 1/4 to 1/2 pint per acre. Alfalfa Caterpillars, Alfalfa Weevil (adult), (Refer also to Egyptian Weevil), Clover Leaf Weevil and Webworms - 1/2 pint per acre. Lygus Bugs, Mites and Stink Bugs - 1/4 to 1/2 pint per acre. Egyptian Alfalfa Weevil - 1/4 to 1 pint per acre. Do not apply within 15 days of harvest.

Alfalfa Seed Chalcid (seed crop only) - 1/4 to 1/2 pints per acre. Do not apply within 20 days of harvest.

BARLEY: Thrips (Barley) - 1/4 to 1/2 pint per acre. Cutworms (Climbing), False Chinch Bug, Leafhopper, Mites (Brown Wheat) and Winter Grain) - 1/4 to 1/2 pint per acre. Aphids (including Greenbug) - 1/4 to 3/4 pint per acre. Apply in early spring for Greenbug control. Armyworms (to 3rd instar), Black Grass Bugs and Stink Bugs - 1/4 to 3/4 pint per acre. Chinch Bugs and Say Stink Bugs - 3/4 pint per acre.

Do not apply within 15 days of harvest.

COTTON: Fleahoppers (including Cotton Fleahopper) and Thrips - 1/4 to 1/2 pint per acre. (For Thrips - Apply before or during the 4-leaf stage and repeat 1 to 3 times at 7- to 10-day intervals.) Grasshoppers - 1/4 pint per acre. Cotton Leafworm and Garden Webworm - 1/4 to 1/2 pint per acre. Lygus Bugs, Spider Mites (including Desert Spider Mites and Two-Spotted Spider Mites) - 1/4 to 1 pint per acre. False Chinch Bug and Southern Green Stink Bug - 1/2 pint per acre. Aphids (including Cotton Aphid), Fall Armyworms (to 3rd instar), Cotton Leafperforator, Cutworms and Cabbage Loopers - 1/4 to 1 pint per acre. (For Aphids (including Cotton Aphid): Apply when Aphids appear in buds and on leaves of seedlings or when honeydew appears on older plant.) Boll Weevil - 1/2 to 3 pints per acre. (For early season control of over-wintering Boll Weevils, apply as early as the 2- to 4-leaf stage and repeat 1 to 3 times at 7- to 10-day intervals. For mid-season control, apply at the start of squaring or after 10 to 25% of the first squares are punctured and repeat at 3- to 8-day intervals as needed or until the top bolls are full grown. Repeat at 3-day intervals during the major fruiting season, and periods of heavy weevil migration.) Saltmarsh Caterpillars, Stink Bugs and Leafrollers - 1 pint per acre. Bollworms - 1 to 3 pints per acre. Armyworms - 1 to 2 pints per acre.

RIGHT half
of two-
part label

COTTON (cont'd)

Do not apply within 7 days of harvest or handpicking. Workers entering fields within 24 hours after application should wear protective clothing.

LETTUCE: Aphids, Armyworms, Flea Beetles, Imported Cabbage-worms, Leafhoppers and Mites - 1/4 to 1 pint per acre. (Do not apply within 21 days of harvest.) Cabbage Loopers and Plant Bugs - 1 pint per acre. (Do not apply within 21 days of harvest.)

SORGHUM: Corn Leaf Aphids and Spider Mites - 1/2 pint per acre. Sorghum Midge - 1/2 to 1 pint per acre. Apply when approximately 90% of the heads have completely emerged from the boot or not later than the start of blooming.) Greenbug Aphid - 1/4 pint per acre. Aphids - 1 pint per acre.

Do not apply within 21 days of harvest. Leaf injury may occur on some hybrid varieties. Do not use wetting agents as more severe injury may occur. Spray a few rows a week or so before booting to test effects upon plants.

SUGAR BEETS: Armyworms, Fall Armyworms, Cutworms (including Climbing Cutworms), Flea Beetles, Grasshoppers, Leafhoppers, Mites and Sugar Beet Webworms - 1/4 to 3/4 pint per acre. Lygus Bugs, Stink Bugs and Webworms - 1/4 pint per acre.

Do not apply within 20 days of harvest. If tops are going to be fed to cattle, do not apply within 60 days of harvest.

TOMATOES: Tomato Russet Mites - 1/4 to 1/2 pint per acre. Aphids and Armyworms - 1/4 to 1 pint per acre. Leafhoppers and Mites - 1/4 to 1 pint per acre. Potato Psyllid - 1/2 to 1 1/2 pints per acre. Plant Bugs - 1 pint per acre. Cabbage Looper - 1 to 1 1/2 pints per acre.

Do not apply within 10 days of harvest through 1 pint. Do not apply within 15 days of harvest from 1 pint through 3 pints.

WHEAT: Brown Wheat Mites - 1/4 to 1/2 pint per acre. Aphids (including Greenbug) - 1/4 to 3/4 pint per acre. Barley Thrips - 1/4 to 1/2 pint per acre. Leafhoppers - 1/4 to 1/2 pint per acre. Armyworms (to 3rd instar), Winter Grain Mites and Stink Bugs - 1/4 to 3/4 pint per acre. Climbing Cutworms - 1/4 pint per acre. Chinch Bugs, False Chinch Bugs and Say Stink Bugs - 3/4 pint per acre.

Do not apply within 15 days of harvest from 1/2 pint through 1 1/2 pints.

F-682

NOTICE: The statements made on this label are believed to be true and accurate, but because of conditions of use which are beyond our control, WILBUR-ELLIS COMPANY does not make, nor does it authorize any agent or representative to make, any warranty, guaranty or representation, express or implied, concerning this material or the use thereof, except in conformity with the statements on the label. Neither WILBUR-ELLIS COMPANY nor the seller shall be held responsible in any manner for any personal injury or property damage or loss resulting to the buyer or to the other person from handling, storage or use of this material, not in accordance with directions. The buyer assumes all risk and liability resulting from improper handling, storage or use and accepts and uses this material on these conditions.



METHYL PARATHION

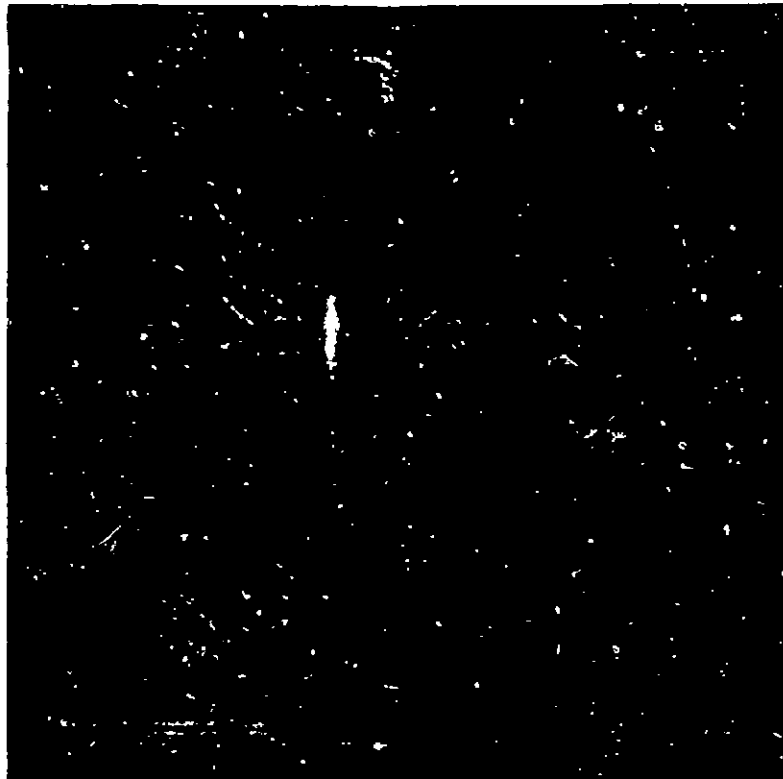
NA 21

METHYL PARATHION
PART TWO

"FLASH POINT IS 73° F OR HIGHER"



6



METHYL PARATHION MIXTURE, LIQUID
NA 2783

In Case of Emergency, Call CHEMTREC
800/424-9300

METHYL PARATHION MIXTURE, LIQUID
PART TWO

U.S. ENVIRONMENTAL PROTECTION AGENCY OFFICE OF PUBLIC AFFAIRS REGISTRATION DIVISION, RM 547 WASHINGTON, D.C. 20460	EPA REGISTRATION NO.	DATE OF EXPIRANCE
	TERM OF EXPIRANCE	
NOTICE OF PESTICIDE: <small>REGISTRATION</small> <small>RENEWAL</small> <i>Under the Federal Insecticide, Fungicide, and Rodenticide Act</i>	NAME OF PESTICIDE PRODUCT	
	NAME AND ADDRESS OF REGISTRANT (Include ZIP Code)	
<p>NOTE: Changes in labeling formula differing in substance from that accepted in connection with this registration must be submitted to and accepted by the Registration Division prior to use of the label in commerce. In any correspondence on this product always refer to the above U.S. EPA registration number.</p> <p>On the basis of information furnished by the registrant, the above named pesticide is hereby Registered/Reregistered under the Federal Insecticide, Fungicide, and Rodenticide Act.</p> <p>A copy of the labeling accepted in connection with this Registration/Reregistration is returned herewith.</p> <p>Registration is in no way to be construed as an indorsement or approval of this product by this Agency. In order to protect health and the environment, the Administrator, on his motion, may at any time suspend or cancel the registration of a pesticide in accordance with the Act. The acceptance of any name in connection with the registration of a product under this Act is not to be construed as giving the registrant a right to exclusive use of the name or to its use if it has been covered by others.</p>		
<input type="checkbox"/> ATTACHMENT IS APPLICABLE		
SIGNATURE OF APPROVING OFFICIAL		DATE