

M16 REG# 2935-359

**PRECAUTIONARY STATEMENTS**

**HAZARDS TO HUMANS — DANGER:** Poisonous if swallowed, inhaled or absorbed through skin. Rapidly absorbed through skin. Do not get in eyes, on skin or on clothing. Wear a mask or respirator of a type suitable for protection against phosphamidon liquid. Wear natural rubber gloves, protective clothing and goggles. In case of contact, wash immediately with soap and water. Wash hands, arms and face thoroughly with soap and hot water before re-use. Keep all unprotected persons out of operating areas or vicinity where there may be danger of drift.

**ANTIDOTE:** If Swallowed — Drink 1 or 2 glasses of water and induce vomiting by touching back of throat with finger or blunt object. Do not induce vomiting or give anything by mouth to an unconscious person. Get medical attention. Note to Physicians — Atropine is antidotal. 2-PAM is also antidotal and may be administered in conjunction with Atropine. If on Skin — Remove contaminated clothing and immediately wash skin with soap and water. Get medical attention. If in Eyes — Flush eyes with plenty of water. Get medical attention. If Inhaled — Move to fresh air. Get medical attention.

Do not apply this product in such a manner as to directly or through drift expose workers or other persons. The area being treated must be vacated by unprotected persons.

**ENVIRONMENTAL HAZARDS**

Do not apply under conditions involving possible drift to food, forage or other plantings that might be damaged or the crops thereof rendered unfit for sale, use or consumption.

Do not use on Maple Trees, Peaches, Plums or Sweet Cherries as injury may occur. Avoid drift to these varieties.

This pesticide is toxic to aquatic invertebrates and wildlife. Do not apply directly to water or wetlands (including swamps, marshes, bogs and potholes). Runoff and drift from treated areas may be hazardous to aquatic organisms in adjacent aquatic sites. Do not contaminate water by cleaning of equipment or disposal of wastes.

This pesticide is highly toxic to bees exposed to direct treatment or residues on blooming crops or weeds. Do not apply this pesticide or allow it to drift to blooming crops or weeds if bees are visiting the treatment areas.

**CHEMICAL AND PHYSICAL HAZARDS**

Flammable. Keep away from heat and open flame.

**BEST AVAILABLE COPY**

**RESTRICTED USE PESTICIDE**

Due to Acute Dermal Toxicity to Humans and Residue Effects on Avian and Mammalian For retail sale to and use only by certified applicators or persons under the direct supervision only for those uses covered by the certified applicator's certification.

**Wilbur-Ellis**

**Phosphamidon 8**  
spray (INSECTICIDE)

**ACTIVE INGREDIENTS:**

\*Phosphamidon .....  
Related Compounds.....

**INERT INGREDIENTS.....**

\*2-Chloro-3-(diethylamino)-1-methyl-3-oxo-1-propenyl dimethyl phosphate  
Contains 8 lbs. Phosphamidon insecticide per gallon.

U.S.

EPA Reg. No. 2935-359

**KEEP OUT OF REACH OF CHILDREN**

**DANGER  
PELIGRO**



**POISON**

PRECAUCION AL USUARIO: Si usted no lee ingles, no use este producto hasta que la etiqueta haya sido explicada

**DO NOT INHALE — DO NOT GET ON SKIN  
DO NOT TAKE INTERNALLY**

**SEE ADDITIONAL WARNING STATEMENTS ON SIDE PANEL**

**Wilbur-Ellis**

P.O. BOX 16458 • FRESNO, CA 93755

**ACCEPTED**  
JUL 06 1990  
Under the Federal Insecticide, Fungicide, and Rodenticide Act, as amended, by the EPA  
2935-359

## DIRECTIONS FOR USE

violation of Federal law to use this product in a manner inconsistent with its labeling.

### WORKER SAFETY & PROTECTIVE CLOTHING

**ONLY WHEN WEARING THE FOLLOWING PROTECTIVE CLOTHING AND EQUIPMENT DURING MIXING/LOADING, APPLICATION, DISPOSAL OF THE PESTICIDE, AND EARLY RE-ENTRY INTO TREATED AREAS:** Protective suit of one or two pieces covering all parts of the body except head, hands and feet; chemical-resistant gloves; chemical-resistant shoes. In addition, loaders must wear a chemical-resistant apron. During equipment and cleaning, the protective suit need not be worn, if re-entry exposure is likely, such as when flagging during aerial application, a hood or wide-brimmed hat must be worn.

IF APPLICATION IS PERFORMED USING AN ENCLOSED CAB OR COCKPIT, THE FOLLOWING PROTECTIVE CLOTHING AND EQUIPMENT MAY BE WORN AS AN ALTERNATIVE: Long-sleeved shirt and long-legged pants; shoes and socks. Chemical-resistant gloves must be available in the cab or cockpit and must be worn during entry to and exit from the application vehicle. All other protective clothing and equipment required for use during application must be available in the cab and must be worn when exiting the cab into treated areas. When used for this purpose, contaminated clothing must be brought back into the cab unless in an enclosure such as a plastic bag.

**IMMEDIATELY** If pesticide comes in contact with skin, wash off with water and soap. Always wash hands, face and arms with soap and water before smoking, eating, drinking or toileting.

**BEFORE WORK:** Before removing gloves, wash them with soap and water. Take off all work clothes and shoes. Shower using soap and water. Wear only clean clothes when leaving job — do not wear contaminated clothing. Personal and protective clothing worn during application must be laundered separately from household articles. Store protective clothing separately from personal clothing. Clean or launder protective clothing after each use. Protective clothing and equipment that becomes heavily contaminated or drenched must be disposed according to State and local regulations. **HEAVILY CONTAMINATED OR DRENCHED CLOTHING CANNOT BE ADEQUATELY DECONTAMINATED.**

### RE-ENTRY INTERVAL

Re-entry into treated areas is prohibited for 48 hours after the end of application, unless the protective clothing specified on this label for re-entry is worn.

48 hours after the end of application

FOR EARLY RE-ENTRY INTO TREATED AREAS: Use protective suit of one or two pieces covering all parts of the body except hands and feet; chemical-resistant gloves; chemical-resistant shoes (or chemical-resistant shoe coverings or chemical-resistant shoe coverings).

### RE-ENTRY STATEMENT

Do not enter treated areas without protective clothing until sprays have dried. Because certain states may require more rest intervals for various crops treated with this product, consult your State Department of Agriculture for further information.

Written or oral warnings must be given to workers who are expected to be in a treated area or in an area about to be treated with this product. Oral warnings should specify protective clothing (see above), areas or fields that cannot be entered without this protective clothing, and statement of practical treatment (see above) in case of exposure. When oral warnings are given, written warnings shall be given in a language customarily understood by workers. Oral warnings must be given if there is reason to believe that written warnings cannot be understood by workers. Warnings must include the following information: "Danger. Arethophosphamidon on (date of application). Do not enter without appropriate protective clothing until sprays have dried. (Insert name of crop in case of accidental exposure — see above.)"

### DIRECTIONS FOR USE (cont.)

NOT FOR USE OR STORAGE IN OR AROUND THE HOME.

## STORAGE AND DISPOSAL

- Prohibitions:** Do not contaminate water, food or feed by storage or disposal.
- Pesticide Disposal:** Pesticide wastes are acutely hazardous. Improper disposal of excess pesticide, spray mixture, or empty container is a violation of Federal law. If these wastes cannot be disposed of by use according to label instructions, contact your State Pesticide or Environmental Control Agency, or the Hazardous Waste representative at the nearest EPA Regional Office for guidance.
- Container Disposal:** Triple rinse (or equivalent). Then offer for recycling or reconditioning, or puncture and crush into sanitary landfill, or by other procedures approved by state and local authorities.
- Storage:** Store in original container only and keep sealed. Store in closed storage areas. Use caution when moving, opening or pouring. Store in a cool, dry place.

Do not use this product through any type of irrigation system.

Contains phosphamidon manufactured by Ciba-Geigy Corp.

**NOTICE:** The statements made on this label are believed to be true and accurate, but because of conditions of use which are beyond our control, WILBUR-ELLIS COMPANY does not make, nor does it authorize any agent or representative to make, any warranty, expressed or implied, concerning this material or the use thereof, except in conformity with the statement on this label. Neither WILBUR-ELLIS COMPANY nor the seller shall be held responsible in any manner for any personal injury or property damage resulting to the buyer or to the other person from handling, storage or use of this material, not in accordance with directions on this label. The user assumes all risk and liability resulting from improper handling, storage or use and accepts and uses this material on these terms.

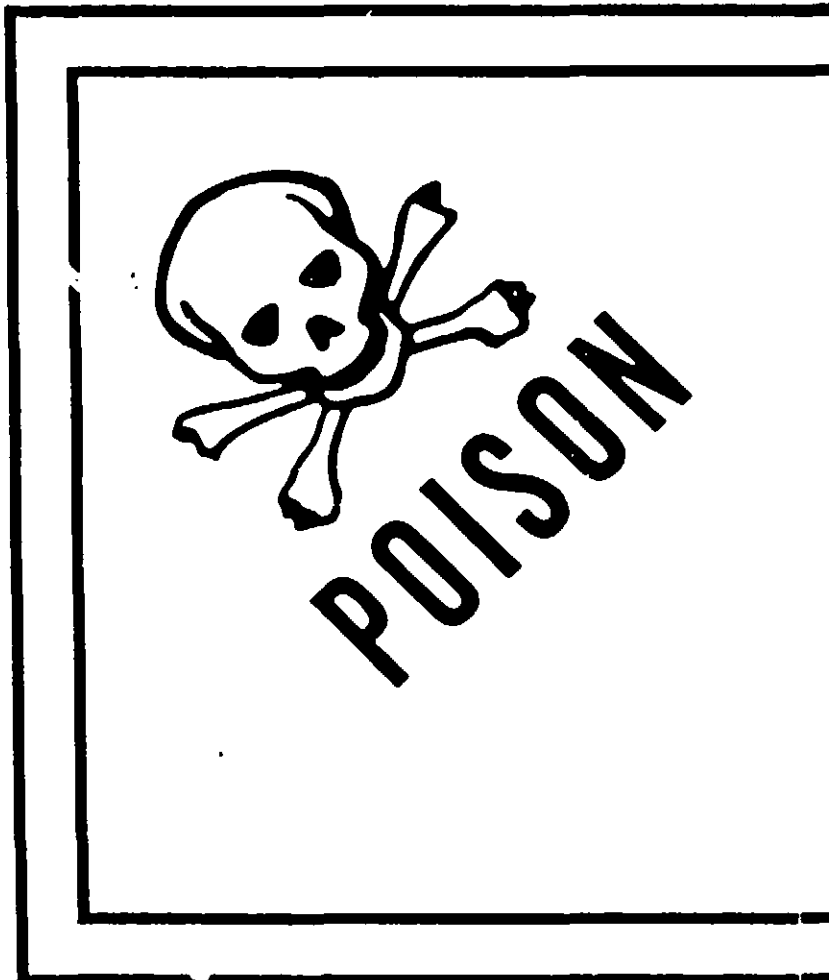
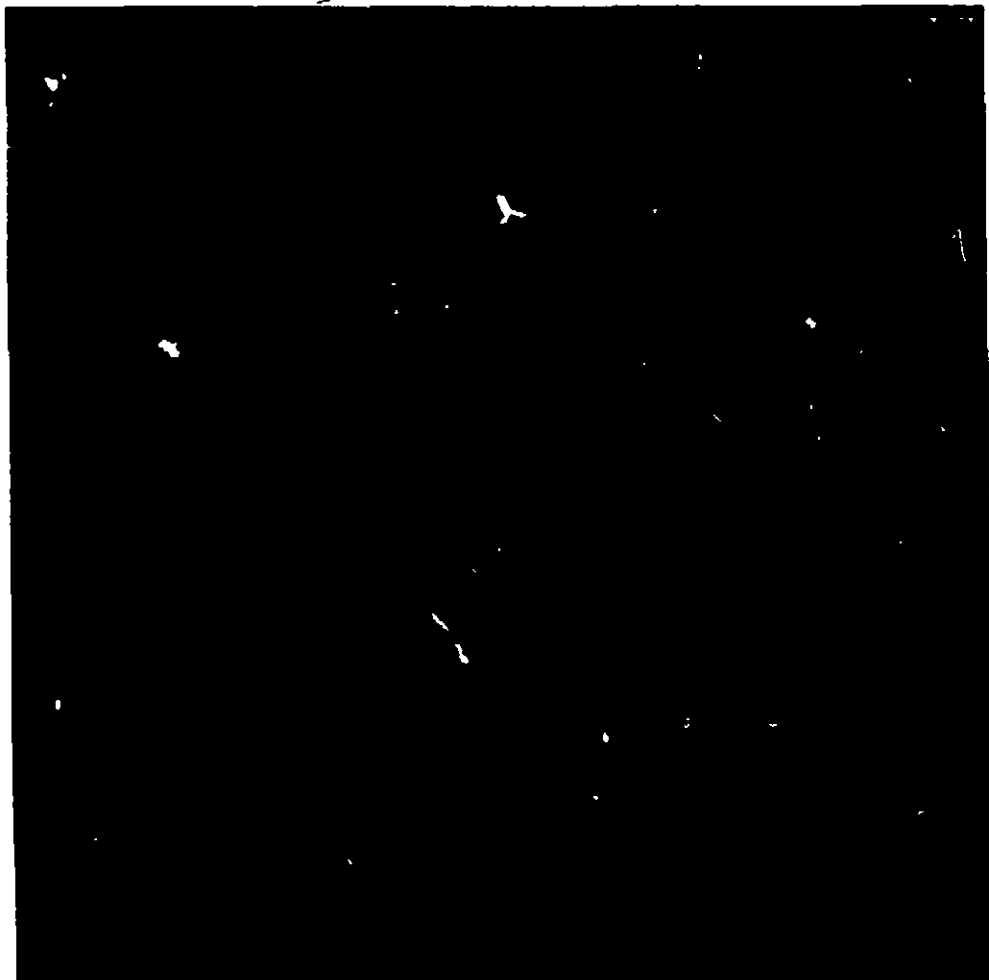
NET CONTENTS: 1 GALLON LIQUID

BEST AVAILABLE COPY

side,  
use  
the  
sure  
ation

—

is of use  
agent or  
partial or  
near the  
to the  
and, The  
see this



**ORGANOPHOSPHORUS PESTICIDE,  
LIQUID, N.O.S., UN 2784**

**IN CASE OF EMERGENCY,  
CALL CHEMTREC: (800) 424-9300**

# Phosphamidon 8 Spray

(INSECTICIDE)

ACTIVE INGREDIENTS:	By Wt.
*Phosphamidon .....	74.5%
Related Compounds .....	3.5%
<b>INERT INGREDIENTS</b> .....	<b>22.0%</b>
*2-Chloro-2-diethylcarbamoyl-1-methylvinyl dimethyl phosphite	Total 100.0%

Contains 8 lbs. Phosphamidon Insecticide per gallon. U.S. Patent No. 2,908,605  
EPA Reg. No. 2935-359

KEEP OUT OF REACH OF CHILDREN

**DANGER**  
**PELIGRO**



**POISON**

PRECAUCION AL USUARIO: Si usted no lee ingles, no use este producto hasta que la etiqueta haya sido explicada ampliamente.

DO NOT INHALE — DO NOT GET ON SKIN  
DO NOT TAKE INTERNALLY  
SEE CONTAINER LABEL FOR ADDITIONAL PRECAUTIONS

**BEST AVAILABLE COPY**

## DIRECTIONS FOR USE

*Copy C* →

### RECOMMENDATIONS FOR USE

USE DESIGNATED AMOUNT OF PRODUCT IN THE FOLLOWING GALLONS WATER PER ACRE UNLESS OTHERWISE NOTED.

~~GROUND APPLICATION — Vegetable and Field Crops: 20 to 250 gals. Deciduous Fruit Crops: 60 to 600 gals. Citrus: 400 to 3,000 gals. (On Young Fruit Plantings Use a minimum of 15 gals. water per acre.)~~

~~AIR APPLICATION — Vegetable and Field Crops: 3 to 10 gals. Orchard Crops: 10 to 50 gals.~~

APPLES (Non-Bearing Only): Leafhoppers, Green and Rosy Apple Aphids — ¼ pt. per acre in 100 gals. of water. Repeat at 14-21 day intervals. PRECAUTION: Do not direct spray or allow spray to drift onto pear, stonefruit or bearing apple trees. Do not apply to non-bearing apple trees, if they are under moisture stress. *Copy D*

POTATOES: Aphids, Colorado Potato Beetles, Leafhoppers, Leafminers, Flea Beetles, Blightbugs — ¼ pt. per acre in water to cover by ground application (1 to 5 gals. by air). Repeat as necessary. Do not apply within 14 days of harvest.

WALNUTS: Aphids, Galling Moth — 1 pt. per acre (Ground — 400 gals. water. Air — 10 to 20 gals. water). Walnut Husk Fly — 1 pt. per acre (Ground — 200 to 300 gals. water. Air — 10 to 20

KEEP OUT OF REACH OF CHILDREN

**DANGER  
PELIGRO**



**POISON**

5/6

PRECAUCION AL USUARIO: Si usted no lee ingles, no use este producto hasta que la etiqueta haya sido explicada ampliamente.

**DO NOT INHALE — DO NOT GET ON SKIN  
DO NOT TAKE INTERNALLY  
SEE CONTAINER LABEL FOR ADDITIONAL PRECAUTIONS**

**DIRECTIONS FOR USE**

*Copy C* →

**RECOMMENDATIONS FOR USE**

~~USE DESIGNATED AMOUNT OF PRODUCT IN THE FOLLOWING GALLONS WATER PER ACRE UNLESS OTHERWISE NOTED.~~

~~GROUND APPLICATION — Vegetable and Field Crops — 60 to 250 gals. Deciduous Fruit Crops — 60 to 200 gals. Citrus — 100 to 2,000 gals. (On Young Fruit Plantings Use a minimum of 15 gals. water per acre.)~~

~~AIR APPLICATION — Vegetable and Field Crops — 2 to 10 gals. Orchard Crops — 10 to 20 gals.~~

APPLES (Non-Bearing Only): Leafhoppers, Green and Rosy Apple Aphids — 1/4 pt. per acre in 100 gals. of water. Repeat at 14-21 day intervals. PRECAUTION: Do not direct spray or allow spray to drift onto pear, stonefruit or bearing apple trees. Do not apply to non-bearing apple trees, if they are under moisture stress. *Copy D*

POTATOES: Aphids, Colorado Potato Beetles, Leafhoppers, Leafminers, Flea Beetles, Stinkbugs — 1/2 pt. per acre in water to cover by ground application (1 to 5 gals. by air). Repeat as necessary. Do not apply within 14 days of harvest.

WALNUTS: Aphids, Codling Moth — 1 pt. per acre (Ground — 400 gals. water. Air — 10 to 20 gals. water). Walnut Husk Fly — 1 pt. per acre (Ground — 200 to 300 gals. water. Air — 10 to 20 gals. water), applying after egg stings first occur in the husks. Do not use within 7 days of harvest.

COTTON (California and Arizona only): Early Season (two through ten leaf stage) — Aphids, Thrips, Fleahoppers, Spider Mites — 3 fl. oz. per acre with ground equipment. Spray directly on young plants in sufficient water to cover. Make first application at the second true leaf stage. Mid and Late Season — Lygus, Flea Beetles, Leafhoppers — 1/2 pt. per acre in water to cover, by ground or air. Aphids — 1/4 pt. per acre by ground or air. Air Application — Use in 1 to 5 gals. water per acre. Do not apply more than three sprays. Do not use within 30 days of harvest. Do not graze treated cotton fields.

34008

F-1000  
F-790

**Wilbur-Ellis**

*Ideas to grow with®*

P.O. BOX 16458 • FRESNO, CA 93755

**BEST AVAILABLE COPY**

6  
b

Copy A - Use only according to attached  
Labeling (See insert for Direction for Use).

Copy B - Insert for Directions for Use

Copy C - It is a violation of Federal law to  
use this product in a manner inconsistent  
with its labeling.

Copy D - Do not use within 30 days of harvest

7  
8  
9  
0