

**HAZARDS TO HUMANS — DANGER**

**PRECAUTIONARY STATEMENTS**

**ANTIDOTE If Swallowed**

Note to Physicians  
If on Skin

**ENVIRONMENTAL HAZARDS**

**DIRECTIONS FOR USE**

NOT FOR USE OR STORAGE IN OR AROUND THE HOME

**STORAGE AND DISPOSAL**

Store in a cool dry place

USE DESIGNATED AMOUNT OF PRODUCT IN THE FOLLOWING GALLONS WATER PER ACRE UNLESS OTHERWISE NOTED

**GROUND APPLICATION — Vegetable and Field Crops**  
Citrus

Deciduous Fruit Crops

**AIR APPLICATION — Vegetable and Field Crops**

Orchard Crops

**ACCEPTED**

DEC 1 1979

Phosphamidon Insecticide  
EPA Reg. No. 2935-359-AA  
EPA Est. 2935-CA-1

**RESTRICTED USE PESTICIDE:**

For retail sale to and use only by Certified Applicators or persons under their direct supervision and only for those uses covered by the Certified Applicator's certification.

[Wilbur-Ellis]

**Phosphamidon 8**  
spray [INSECTICIDE]

<b>ACTIVE INGREDIENTS:</b>	<b>By Wt.</b>
*Phosphamidon	74.5%
Related Compounds	3.5%
<b>INERT INGREDIENTS:</b>	22.0%
<b>Total</b>	<b>100.0%</b>

**KEEP OUT OF REACH OF CHILDREN**

**DANGER**



**POISON**

DO NOT INHALE — DO NOT GET ON SKIN  
DO NOT TAKE INTERNALLY

SEE ADDITIONAL WARNING STATEMENTS ON SIDE PANEL  
EPA Reg. No. 2935-359-AA EPA Est. 2935-CA-1

[Wilbur-Ellis]

FRESNO • LOS ANGELES • GLENDALE, ARIZ. • PORTLAND • SEATTLE

- APPLES (Non-B...
- CUCUMBERS A...
- TANGERINES (C...
- PEPPERS Aphid...
- Corn Borers
- POTATOES Aph...
- TOMATOES Ap...
- WALNUTS Aph...
- Walnut Husk
- BROCCOLI, CALI...
- CANTALOUPE
- COTTON (Califo...
- Spider Mit...
- Leafhopper
- Air...
- Contains phos...
- NET CON...
- In Case o...

under  
Certified

DIRECTIONS FOR USE (Continued)

APPLES (Non-Bearing Only) Leafhoppers, Green & Rosy Apple Aphids  
PRECAUTION

CUCUMBERS Aphids, Leaf Miner, Leafhopper

TANGERINES (California and Arizona only) ORANGES GRAPEFRUIT LEMONS Aphids, Thrips  
Ground Application Air Application

PEPPERS Aphids, Leaf Miners, White Fly European  
Corn Borer

POTATOES Aphids, Colorado Potato Beetles, Leafhoppers, Leafminers, Flea Beetles, Stinkbugs

TOMATOES Aphids, Colorado Potato Beetles, Leaf Miner, White Fly, Flea Beetles, Stinkbugs

WALNUTS Aphids, Codling Moth Ground Ground Air  
Walnut Husk Fly (Ground)

BROCCOLI CAULIFLOWER Aphids, Imported Cabbageworm

CANTALOUPE WATERMELON Aphids, Leaf Miner, Leafhopper

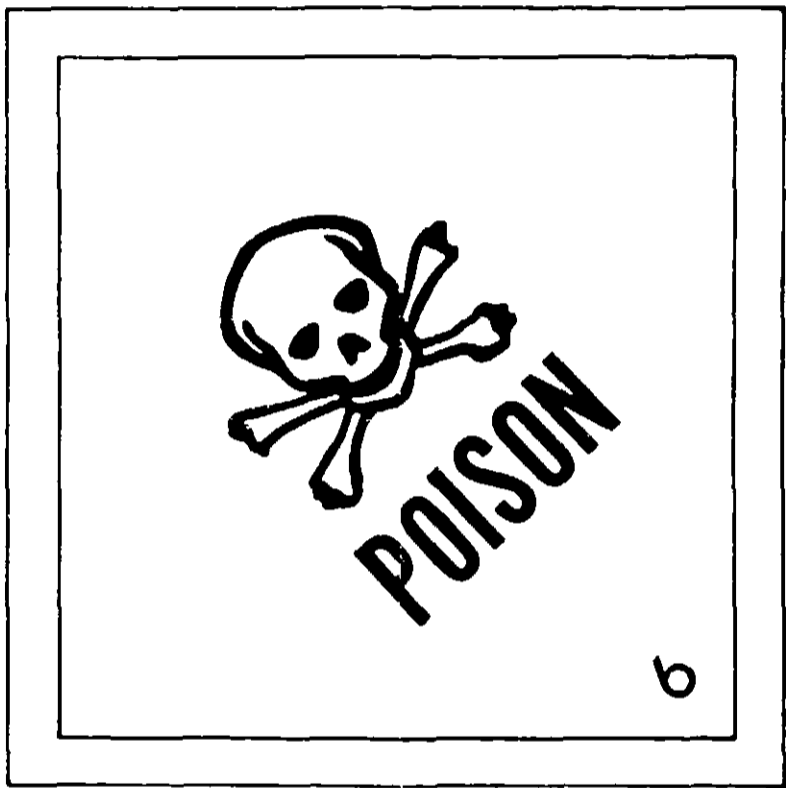
COTTON (California and Arizona Only) Early Season (two through ten leaf stage) — Aphids, Thrips, Fleahoppers, Spider Mites  
Mid and Late Season — Lygus, Flea Beetles, Aphids  
Leathoppers Air Application

Contains phosphorus. Manufactured by Ciba-Geigy Corp.

F 979

NET CONTENTS 1 GALLON LIQUID

In Case of Emergency, Call CHEMTREC: (800) 424-9300



ORGANIC PHOSPHATE COMPOUND  
MIXTURES, LIQUID, N. O. S.



NO  
tion  
with  
the  
Net  
pers  
stor  
rese

8

ly Wt.  
4.5%  
3.5%  
2.0%  
0.0%

Z

2

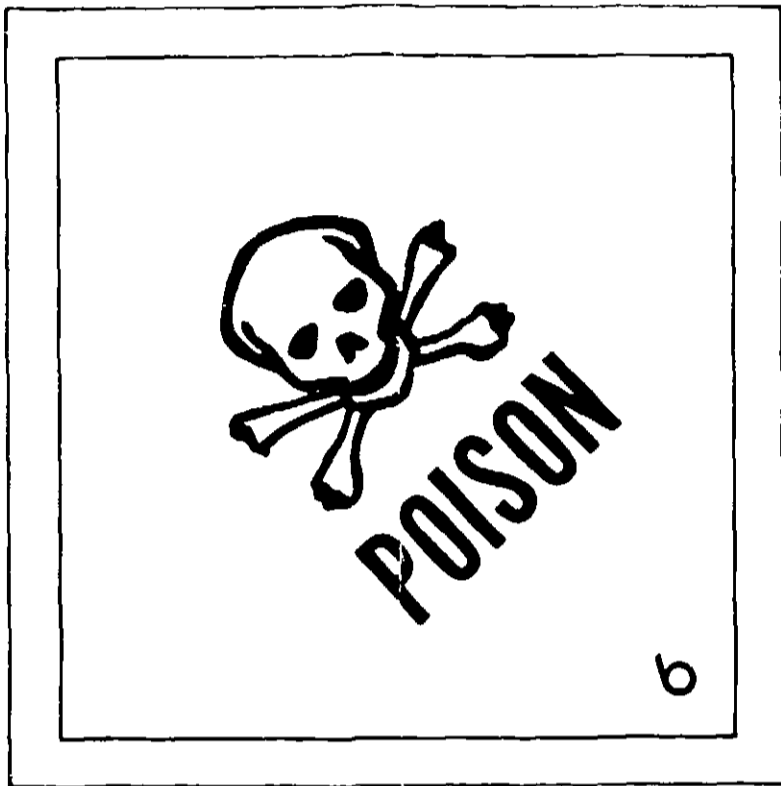
IEL

1

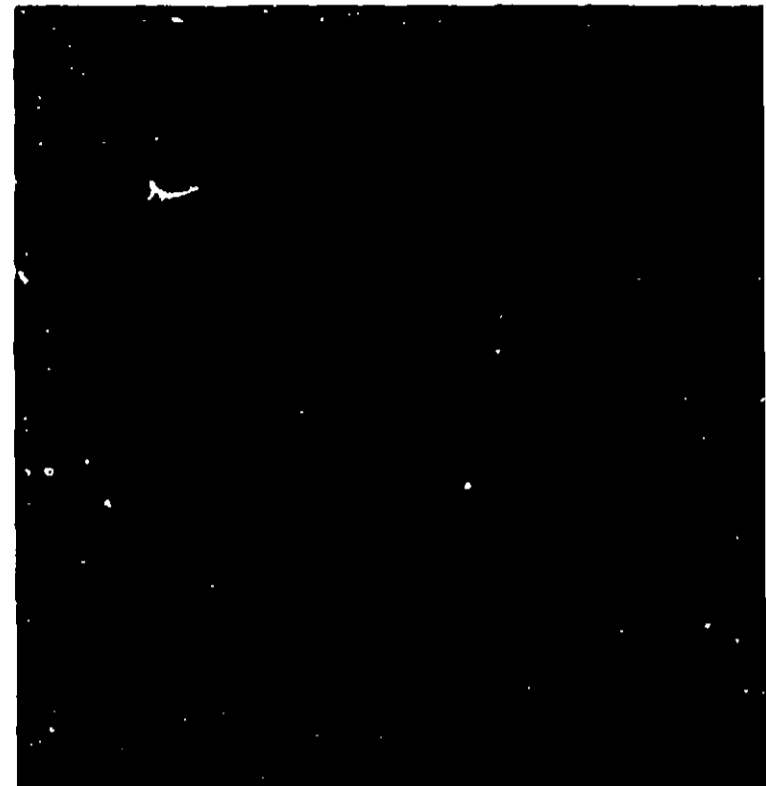
ATTLE

2

F



**ORGANIC PHOSPHATE COMPOUND  
MIXTURES, LIQUID, N. O. S.**



**NOTICE:** The statements made on this label, are believed to be true and accurate, but because of terms of use which are beyond our control, WILBUR-ELLIS COMPANY does not make, nor authorize any agent or representative to make, any warranty, guaranty or representation, expressed or implied, concerning this material or the use thereof, except in conformity with the statements on the label. Neither WILBUR-ELLIS COMPANY nor the seller shall be held responsible in any manner for personal injury or property damage or loss resulting to the buyer or to the other person from the storage or use of this material, not in accordance with directions. The buyer assumes all risk and liability resulting from improper handling, storage or use and accepts and uses this material on those conditions.

MS. Aphids, Thrips  
A. Aphididae  
Euclyptus  
Beetles, Stinkbugs  
C. Aphididae  
A.  
Aphididae  
Aphids, Thrips, Fleahoppers  
Late Season - Lygus, Flea Beetles  
Aphids

FIG 1

(00) 424-9300