

BEST AVAILABLE COPY

ANTIDOTE AND FIRST AID TREATMENT

Atropine is The Emergency Antidote For Phosdrin Insecticide Poisoning. Consult your physician about obtaining an adequate supply 1/100 grain atropine tablets for emergency use. **Call Physician Immediately in All Cases of Suspected Poisoning.**

Internal: If the material has been swallowed, drink 1 or 2 glasses of water and induce vomiting by touching back of throat with finger or blunt object. Do not induce vomiting or give anything by mouth to an unconscious person. Get medical attention.

External: If the material has been spilled on the skin, immediately remove patient from the vicinity of the insecticide, remove all contaminated clothing, and wash skin with soap and running water. If the material gets into the eyes, wash immediately with running water for at least ten minutes.

Start Artificial Respiration immediately if Patient is Not Breathing. Transport The Patient Immediately To The Nearest Physician.

PRECAUTIONARY STATEMENTS

Do not apply or allow to drift to areas occupied by unprotected humans or beneficial animals. Unprotected humans and animals should be kept out of treated fields on the day of treatment. Keep out of the reach of children and domestic animals. Do not contaminate food or feed products. Keep away from heat and open flame. This product is toxic to fish, birds, and other wildlife. Birds feeding on treated areas may be killed. Keep out of lakes, streams, or ponds. Do not apply where runoff is likely to occur. Do not apply when weather conditions favor drift from treated areas. Do not contaminate water by cleaning of equipment or disposal of wastes. Apply this product only as specified on this label.

This product is highly toxic to bees exposed to direct treatment or residues on crops. Protective information may be obtained from your Cooperative Agricultural Extension Service.

NOT FOR USE OR STORAGE IN OR AROUND THE HOME

STORAGE AND DISPOSAL

Do not contaminate water, food, or feed by storage or disposal. Open dumping is prohibited. Pesticide spray mixture or residue that cannot be used or chemically reprocessed should be disposed of in a landfill approved for pesticides or buried in a safe place away from water supplies. Triple rinse (or equivalent) and offer for recycling, reconditioning, or disposal in approved landfill or bury in a safe place. Consult Federal, State or Local disposal authorities for approved alternative procedures.

DIRECTIONS FOR USE

It is a violation of Federal law to use this product in a manner inconsistent with its labeling.

Apply specified rate per acre in sufficient water to thoroughly cover plant surfaces with ground driven equipment or aircraft. When applied by air use a minimum of 5 gallons of water per acre — by ground a minimum of 10 gallons per acre.

G-579

RESTRICTED USE PESTICIDE:

For retail sale to and use only by Certified Applicators or persons under their direct supervision and only for those uses covered by the Certified Applicator's certification.

RED-TOP

PHOSDRIN® 4 SPRAY

ACTIVE INGREDIENTS:

Alpha Isomer of 2-Methoxycarbonyl-1-methylvinyl dimethyl phosphate 30.0%*

Related Compounds 20.0%*

INERT INGREDIENTS 50.0%

Total 100.0%

*Equivalent to 50.0% W. Phosdrin Insecticide.

E.P.A. Reg. No. 2935-167-AA

E.P.A. Est. No. 33691-AZ-1



POISON

DANGER: KEEP OUT OF REACH OF CHILDREN!
Poisonous If Swallowed, Inhaled or Absorbed Through Skin. Rapidly Absorbed Through Skin or Eyes. Repeated Inhalation or Skin Contact May, Without Symptoms, Progressively Increase Susceptibility to Phosdrin Insecticide Poisoning.

Do not swallow or get in eyes, on skin, or on clothing. Do not breathe vapors. Wear heavy natural rubber gloves and waterproof protective clothing and goggles. Replace gloves frequently and destroy used gloves. Wear a pesticide respirator (fully approved by the Mining Enforcement and Safety Administration (formerly the U. S. Bureau of Mines) and by the National Institute for Occupational Safety and Health under the provisions of 30 CFR Part 11. Wash thoroughly with soap and water after handling and before eating or smoking. If the material gets into eyes, immediately flush with water for at least ten minutes and get medical attention. In case of contact, remove all contaminated clothing and wash skin with soap and water, wash clothing before re-use. In case of spillage, wash down with large amounts of water. Decontaminate areas and equipment by washing with strong lye solution. Then destroy containers to prevent re-use.

(See additional caution and antidotes on side panel.)

Wilbur-Ellis

FRESNO • LOS ANGELES • GLENDALE, ARIZ. • PORTLAND • SEATTLE

ALFALFA & CLOVER
HOPPERS, and SPIDER

APPLES, PEACHES
APHIDS and GRASSHOPPERS
within 1 day of acre on Apples and Plums.

BEANS, BEETS & Green Onions
GRASSHOPPERS, CUTWORMS,
BUGS, IMPACTUS, CORPSAULTS
day of harvest on Beets.

BROCCOLI, BRUSSEL SPROUTS,
MUSTARD (control APHIDS,
HOPPERS, and SPIDERS)
CABBAGE and SPIDER
Mustard Grubs
1 qt. per acre

CELERY: Use 1/2 qt. per acre
DIPTEROUS
LEAFHOPPERS
harvest. For control use
not treat with

CORN (Field), SWISS CHARD
Do not apply

GRAPES: Use 2 qt. per acre
RED-BANDED
within 5 days of harvest

LETTUCE: Use 1 qt. per acre
Do not use on aphids, use

RECOMMENDATIONS FOR USE

ALFALFA & CLOVER: Use 1 pt. per acre to control APHIDS, GRASSHOPPERS, LEAFHOPPERS, CUTWORMS (Climbing), LYGUS BUGS, ALFALFA WEEVIL LARVAE and SPIDER MITES. Do not apply within 1 day of harvest.

APPLES, PEACHES, PEARS & PLUMS: Use 1/2 pt. per 100 gallons of water to control APHIDS and SPIDER MITES. Use 1/3 pt. per 100 gallons of water to control GRASSHOPPERS, LYGUS BUGS and RED-BANDED LEAFROLLERS. Do not apply within 1 day of harvest. Do not use more than 3.2 lbs. actual Phosdrin per acre on Apples and Pears or more than 2.56 lbs. actual per acre on Peaches and Plums.

BEANS, BEETS (Including Beet Tops), CARROTS, EGGPLANTS, ONIONS (Including Green Onions), PEAS (Including Forage): Use 1 pt. per acre to control APHIDS, GRASSHOPPERS, LEAFHOPPERS, MEXICAN BEAN BEETLES, CABBAGE LOOPERS, CUTWORMS (Climbing), DIPTEROUS LEAFMINER (Adult), FALSE CHINCH BUGS, IMPORTED CABBAGE WORM, SALT MARSH CATERPILLAR, LYGUS BUGS, CORN EARWORM, THRIPS and SPIDER MITES. Do not apply within 1 day of harvest on Beans, Carrots, Eggplants, Onion or Peas; within 3 days on Beets.

BROCCOLI, BRUSSELS SPROUTS, CABBAGE, CAULIFLOWER, COLLARDS, KALE, MUSTARD GREENS & TURNIPS (Including Turnip Tops): Use 1 pt. per acre to control APHIDS, CABBAGE LOOPER, IMPORTED CABBAGE WORM, GRASSHOPPERS, LEAFHOPPERS, SALT MARSH CATERPILLAR, CUTWORMS (Climbing), DIPTEROUS LEAFMINER (Adults), LYGUS BUGS, FALSE CHINCH BUGS and SPIDER MITES. Do not apply within 1 day of harvest on Broccoli or Cabbage and within 3 days on Brussels Sprouts, Cauliflower, Collards, Kale, Mustard Greens or Turnips. For hard to kill insects, including aphids, use 1 qt. per acre, but do not treat collards and kale within 7 days of harvest.

CELERY: Use 1/2 pt. per acre to control APHIDS. Use 1/2 to 1 pt. per acre to control DIPTEROUS LEAFMINER (Adult), LYGUS BUG, SALT-MARSH CATERPILLAR, LEAFHOPPER, CABBAGE LOOPER and MITES. Do not treat within 3 days of harvest. For hard to kill insects, including aphids, use 1 qt. per acre, but do not treat within 5 days of harvest.

CORN (Field, Sweet, Pop, Forage & Grain): Use 1 pt. per acre to control APHIDS. Do not apply within 1 day of harvest.

GRAPES: Use 2 pts. per acre to control APHIDS, LEAF FOLDER, LEAFHOPPERS, RED-BANDED LEAF ROLLER, LYGUS BUGS and SPIDER MITES. Do not apply within 5 days of picking.

LETTUCE: Use 1 pint per acre to control CABBAGE LOOPER and CORN EARWORM. Do not use within 2 days of harvest. For hard to kill insects, including aphids, use 1 qt. per acre, but do not treat within 4 days of harvest.

RECOMMENDATIONS FOR USE: (Continued)

PEPPERS: For control of APHIDS, apply 1/4 to 1/2 pint per acre. For control of GRASSHOPPERS, LEAFHOPPERS, and MITES, use 1/2 to 1 pint per acre. Do not treat within 2 days of harvest. For control of ORGANOPHOSPHATE-RESISTANT GREEN PEACH APHIDS (California only), use 1 to 2 pints per acre. Do not treat within 4 days of harvest. If this crop is grown for processing, do not use the higher rates recommended for control of Organophosphate-Resistant Green Peach Aphids without consulting your processor field representative.

POTATOES: For control of APHIDS, GRASSHOPPERS, LEAFHOPPERS, and SPIDER MITES, use 1/2 pint per acre. Do not apply within 1 day of harvest. For control of GREEN PEACH APHID (California only), use 1 quart per acre. Do not apply less than 30 gallons of water per acre for ground application and 5 gallons of water for aerial application. Do not allow workers to re-enter fields within two days of application. Do not make applications within four days of harvest. Do not apply more than 1 quart per acre.

SPINACH: Use 1/2 pt. per acre to control APHIDS. Use 1 pt. per acre to control CABBAGE LOOPER, IMPORTED CABBAGE WORM, GRASSHOPPERS, LEAFHOPPERS, MITES, DIPTEROUS LEAFMINER (Adult), CUTWORMS (Climbing), SALT-MARSH CATERPILLAR and FALSE CHINCH BUG. For hard to kill insects, including aphids, use 1 qt. per acre, but do not treat within 4 days of harvest.

TOMATOES: For control of APHIDS, GRASSHOPPERS, LEAFHOPPERS, and SPIDER MITES, use 1 pint per acre. Do not apply within 1 day of harvest.

RASPBERRIES: Use 1 pt. per acre to control APHIDS and LEAFHOPPERS. Do not apply within 3 days of harvest.

SORGHUMS (Grain & Forage): Use 1 pt. per acre to control APHIDS and CORN EARWORMS. Do not apply within 3 days of harvest.

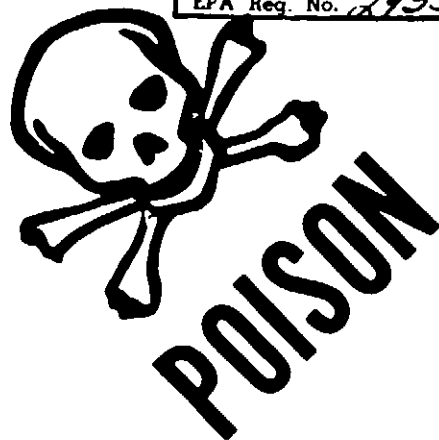
STRAWBERRIES: Use 2 pts. per acre to control APHIDS, GRASSHOPPERS, STRAWBERRY LEAF ROLLER, SALT-MARSH CATERPILLAR, LYGUS BUGS and SPIDER MITES. Do not apply within 1 day of harvest.

SQUASH (Summer) & MELONS (Including Cantaloupes, Honey-Dew, Muskmelons and Watermelons): Use 1/2 pt. per acre to control APHIDS. Use 1 pt. per acre to control CABBAGE LOOPER, DIPTEROUS LEAFMINER (Adults), LEAFHOPPERS, LYGUS BUGS, MITES and GRASSHOPPERS. Do not apply within 1 day of harvest.

ACCEPTED

JUL 24 1979

Under the Federal Insecticide,
Fungicide, and Rodenticide Act,
as amended, for the pesticide
registered under
EPA Reg. No. 2935-167



6

Abopine b
quate
Peteu

Internal 11
with 1
attent

External 11
all cor
ately

Start Aref
Physik

Do not ad
shame
anima
Vms 1
Tread
Areas
spor

This prod
20m

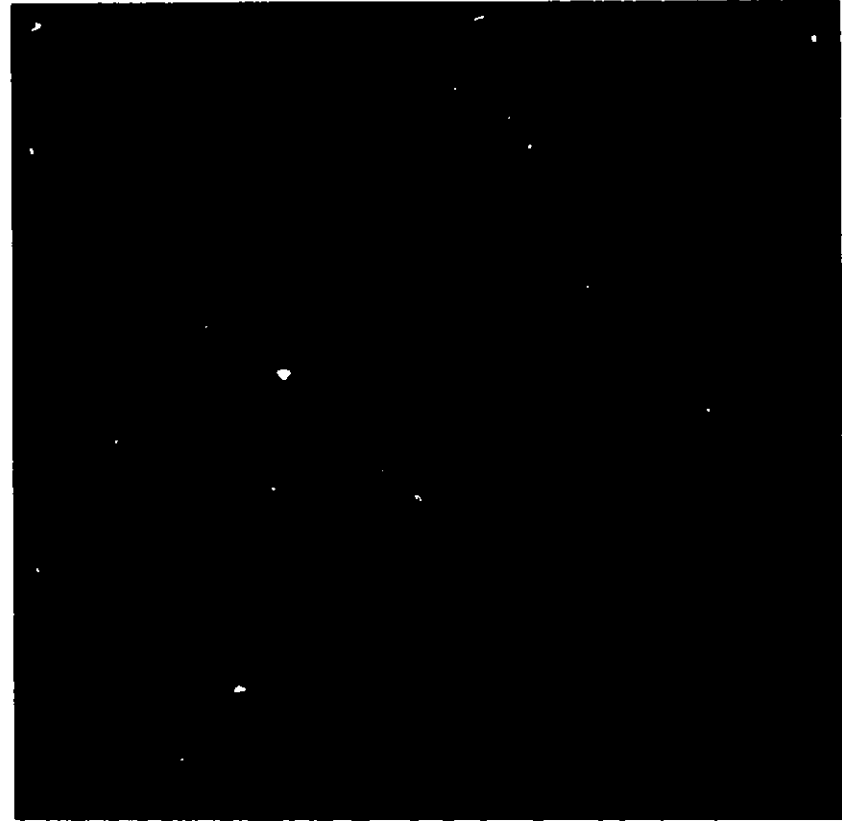
Do not
at rms
buried
disposi
alternat

**ORGANIC PHOSPHATE COMPOUND MIXTURE,
LIQUID**

It is a viol
Apply spe
craft

G-579

In Case of Emergency, Call CHEMTREC 800/424-9300



NOTICE: The statements made on this label, are believed to be true and accurate, but because of conditions of use which are beyond our control, WILBUR-ELLIS COMPANY does not make, nor does it authorize any agent or representative to make any warranty, guaranty or representation, express or implied, concerning this material or the use thereof, except in conformity with the statements on the label. Neither WILBUR-ELLIS COMPANY nor the seller shall be held responsible in any manner for any personal injury or property damage or loss resulting to the buyer or to the other person from handling, storage or use of this material, not in accordance with directions. The buyer assumes all risk and liability resulting from improper handling, storage or use and accepts and uses this material on these conditions.

BEST AVAILABLE COPY