

TRINOX 5%

**INSECTICIDE FOR CONTROL OF SURFACE FEEDING
OF CUTWORMS**

ACTIVE INGREDIENT:

Dimethyl (2,2,2-Trichloro-1-Hydroxyethyl)
Phosphonate* 5%

INERT INGREDIENTS: 95%

TOTAL 100%

*Trichlorfon

EPA REG. NO. 2749-331

NET WEIGHT 50 LBS.

WARNING: KEEP OUT OF THE REACH OF CHILDREN.

MAY BE POISONOUS IF SWALLOWED. HARMFUL IF INHALED OR ABSORBED THROUGH THE SKIN. DO NOT GET IN EYES OR ON SKIN. DO NOT INHALE DUST. USE WITH PROTECTIVE CLOTHING AND A FACE MASK. AFTER HANDLING, WASH WITH PLENTY OF SOAP AND WATER. WASH CONTAMINATED CLOTHING WITH SOAP AND HOT WATER BEFORE REUSING.

IF POISONING OCCURS, GET MEDICAL ATTENTION IMMEDIATELY. PROLONGED EXPOSURE WILL RESULT IN CHOLINESTERASE DEPRESSION.

NOTE TO PHYSICIAN: ATROPINE SULFATE IS ANTIDOTAL. 2-PAM IS ALSO ANTIDOTAL AND MAY BE USED IN CONJUNCTION WITH ATROPINE.

KEEP AWAY FROM DOMESTIC ANIMALS AND FOODSTUFFS.

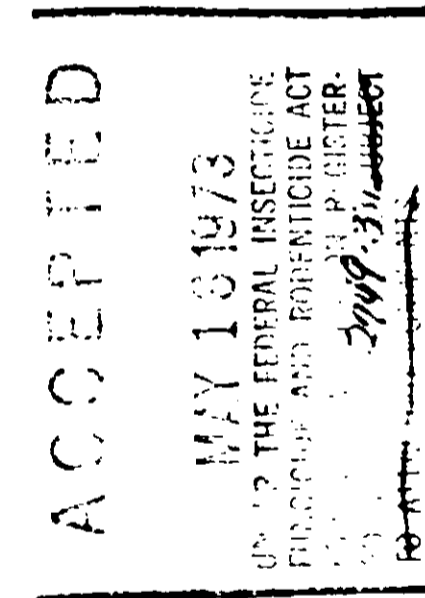
THIS PRODUCT IS TOXIC TO FISH. KEEP OUT OF LAKES, STREAMS AND PONDS. DO NOT APPLY WHERE RUNOFF IS LIKELY TO OCCUR. DO NOT CONTAMINATE WATER BY CLEANING OF EQUIPMENT OR DISPOSAL OF WASTE. APPLY THIS PRODUCT ONLY AS SPECIFIED ON THIS LABEL.

DO NOT REUSE EMPTY CONTAINER. DESTROY EMPTY CONTAINER BY BURNING OR BURYING IN A SAFE PLACE. IF YOU BURN, STAY AWAY FROM THE SMOKE.

THIS PRODUCT IS HIGHLY TOXIC TO BEES EXPOSED TO DIRECT TREATMENT OR RESIDUES ON CROPS. PROTECTIVE INFORMATION MAY BE OBTAINED FROM YOUR COOPERATIVE AGRICULTURAL EXTENSION SERVICE.

DIRECTIONS FOR USE:

Beans: (Dry and Snap): Use 20 to 30 lbs. per acre. Repeat as necessary. Do not apply within 14 days of harvest. Do not use treated vines as food for dairy or meat animals.



WARNING: KEEP OUT OF THE REACH OF CHILDREN.

MAY BE POISONOUS IF SWALLOWED. HARMFUL IF INHALED OR ABSORBED THROUGH THE SKIN. DO NOT GET IN EYES OR ON SKIN. DO NOT INHALE DUST. USE WITH PROTECTIVE CLOTHING AND A FACE MASK. AFTER HANDLING, WASH WITH PLENTY OF SOAP AND WATER. WASH CONTAMINATED CLOTHING WITH SOAP AND HOT WATER BEFORE REUSING.

IF POISONING OCCURS, GET MEDICAL ATTENTION IMMEDIATELY. PROLONGED EXPOSURE WILL RESULT IN CHOLINESTERASE DEPRESSION.

NOTE TO PHYSICIAN: ATROPINE SULFATE IS ANTIDOTAL. 2-PAM IS ALSO ANTIDOTAL AND MAY BE USED IN CONJUNCTION WITH ATROPINE.

KEEP AWAY FROM DOMESTIC ANIMALS AND FOODSTUFFS.

THIS PRODUCT IS TOXIC TO FISH. KEEP OUT OF LAKES, STREAMS AND PONDS. DO NOT APPLY WHERE RUNOFF IS LIKELY TO OCCUR. DO NOT CONTAMINATE WATER BY CLEANING OF EQUIPMENT OR DISPOSAL OF WASTE. APPLY THIS PRODUCT ONLY AS SPECIFIED ON THIS LABEL.

DO NOT REUSE EMPTY CONTAINER. DESTROY EMPTY CONTAINER BY BURNING OR BURYING IN A SAFE PLACE. IF YOU BURN, STAY AWAY FROM THE SMOKE.

THIS PRODUCT IS HIGHLY TOXIC TO BEES EXPOSED TO DIRECT TREATMENT OR RESIDUES ON CROPS. PROTECTIVE INFORMATION MAY BE OBTAINED FROM YOUR COOPERATIVE AGRICULTURAL EXTENSION SERVICE.

DIRECTIONS FOR USE:

Beans: (Dry and Snap): Use 20 to 30 lbs. per acre. Repeat as necessary. Do not apply within 14 days of harvest. Do not use treated vines as food for dairy or meat animals. Apply when plants are small for best results. Three applications may be made before digging. One additional application may be made between digging and harvest.

Cotton: Use 20 to 30 lbs. Repeat as necessary. Do not pasture treated fields within 14 days of application. Do not apply within 7 days of picking.

Peanuts: Use 20 to 30 lbs. per acre. Treat as needed when worm infestations are suspected.

Tobacco: Use 20 to 30 lbs. per acre. Do not apply directly into bud, but apply to base of plants. Do not apply after plants are 2 feet tall.

DO NOT USE ON OTHER CROPS USED FOR FOOD OR FORAGE.

DO NOT USE ON CROPS GROWN IN GREENHOUSES.



Manufactured for:

ACETO CHEMICAL CO., INC.
AGRICULTURAL CHEMICALS DIVISION

126-02 NORTHERN BOULEVARD, FLUSHING, N.Y. 11368

ACCEPTED
MAY 10 1973
U.S. DEPARTMENT OF AGRICULTURE
FEDERAL INSECTICIDE ACT
REGISTERED
2749-331-0001