



OFFICE OF CHEMICAL SAFETY AND POLLUTION PREVENTION

WASHINGTON, D.C. 20460

February 28, 2025

Noelle Sanfilippo
Regulatory Affairs Specialist
Wellmark International
1501 East Woodfield Road, 200W
Schaumburg, Illinois 60173

Subject: Label Amendment - Registration Review Mitigation for Etofenprox and
Pyriproxyfen
Product Name: RF2236 CDSO-N1 FOR DOGS
EPA Registration Number: 2724-842
Application Dates: May 3, 2024
Decision Numbers: 596300, 596301

Dear Noelle Sanfilippo:

The Agency, in accordance with the Federal Insecticide, Fungicide, and Rodenticide Act (FIFRA), as amended, has completed reviewing all the information submitted with your application to support the Registration Review of the above referenced product in connection with the Etofenprox and Pyriproxyfen Interim Decisions, and has concluded that your submission is acceptable. The label referred to above, submitted in connection with registration under FIFRA, as amended, is acceptable.

Should you wish to add/retain a reference to the company's website on your label, then please be aware that the website becomes labeling under the Federal Insecticide, Fungicide, and Rodenticide Act and is subject to review by the Agency. If the website is false or misleading, the product would be misbranded and unlawful to sell or distribute under FIFRA section 12(a)(1)(E). 40 CFR 156.10(a)(5) list examples of statements EPA may consider false or misleading. In addition, regardless of whether a website is referenced on your product's label, claims made on the website may not substantially differ from those claims approved through the registration process. Therefore, should the Agency find or if it is brought to our attention that a website contains false or misleading statements or claims substantially differing from the EPA approved registration, the website will be referred to the EPA's Office of Enforcement and Compliance Assurance.

A stamped copy of your labeling is enclosed for your records. This labeling supersedes all previously accepted labeling and must be used at your next label printing. You must

submit one copy of the final printed labeling before you release the product for shipment with the new labeling. In accordance with 40 CFR 152.130(c), you may distribute or sell this product under the previously approved labeling for 12 months from the date of this letter. After 12 months, you may only distribute or sell this product if it bears this new revised labeling or subsequently approved labeling. "To distribute or sell" is defined under FIFRA section 2(gg) and its implementing regulation at 40 CFR 152.3.

If you have any questions about this letter, please contact DeMariah Koger by phone at (202)-566-2288, or via email at Koger.demariah@epa.gov.

Sincerely,

A handwritten signature in blue ink, appearing to read "Linda Arrington", with a stylized flourish at the end.

Linda Arrington, Branch Chief
Risk Management and Implementation Branch 4
Pesticide Re-Evaluation Division
Office of Pesticide Programs

ENCLOSURE: Stamped label

Text within braces { } denotes notes to reviewer.
Text within brackets [] denotes optional language.
Text within parentheses () is meant to be included on the label
Text within brackets < > is replaceable, but not optional

ETOFENPROX	GROUP	3A	INSECTICIDE
Pyriproxyfen	Group	7C	INSECTICIDE

RF2236 CDSO-N1 for Dogs



{A large, clear picture of a dog in the weight range for the product as packaged will be included in the final printed label.}

{Font size for word “Dog” in product name must be at least 75% the height of the largest letter in the primary brand name.}

{FRONT PANEL}

ACTIVE INGREDIENTS:

Etofenprox.....	55.0%
*Piperonyl Butoxide (PBO).....	10.0%
**n-octyl bicycloheptene dicarboximide (MGK 264).....	1.0%
Pyriproxyfen	0.5%
OTHER INGREDIENTS.....	33.5%
TOTAL	100.0%

*(butylcarbityl)(6-propylpiperonyl) ether and related compounds

**MGK ® 264, Insecticide Synergist

MGK®- Registered Trademark of McLaughlin Gormley King Company

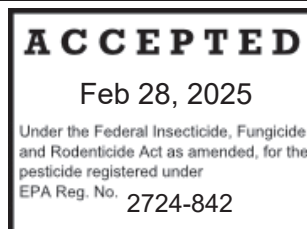
KEEP OUT OF REACH OF CHILDREN

CAUTION: See back panel for additional First Aid and precautionary statements.

NET CONTENT: Contains *(1 or 3)* [tubes/vials/cartridges], each fl. oz. (ml)

For use ONLY on Dogs and Puppies 12 weeks and older	Net Contents (Each tube)	Total Weight (3 tubes)
5 to 14 lbs.	0.031 fl. oz. (0.91 mL)	0.093 fl. oz (2.73 mL)
15 to 30 lbs.	0.066 fl. oz. (1.95 mL)	0.198 fl. oz. (5.85 mL)
31 to 60 lbs.	0.132 fl. oz. (3.90 mL)	0.396 fl. oz. (11.70 mL)
61 to 150 lbs.	0.220 fl. oz. (6.50 mL)	0.660 fl. oz. (19.50 mL)

EPA Reg. No. 2724-842
EPA Est. No.



Batch/Lot No.

{Cat Warning Icon: A cat prohibition icon will appear on the front panel lower right corner area. Icon is 1.5 cm x 1.5 cm black image a yellow background}



{BACK/SIDE PANELS }

PRECAUTIONARY STATEMENTS

HAZARDS TO HUMANS

CAUTION: Causes moderate eye irritation. Avoid contact with eyes, skin or clothing. Wash hands thoroughly with soap and water after handling and before eating, drinking, chewing gum or using tobacco or using the toilet.

HAZARDS TO DOMESTIC ANIMALS

DO NOT USE ON OTHER ANIMALS. This product is not a substitute for a prescribed heartworm preventative. Do not use on dogs or puppies less than 12 weeks of age. Do not use on dogs or puppies weighing less than [5 - 14] [15 - 30] [31 - 60] [61 - 150] lbs. Do not use this product on debilitated, aged, medicated, pregnant or nursing dogs or on dogs/puppies known to be sensitive to pesticide products without first consulting a veterinarian. Sensitivity, such as slight transitory redness of the skin at the site of application, may occur after using ANY pesticide product for pets. If signs of sensitivity occur, bathe your dog with mild soap, rinse with large amounts of water, and consult a veterinarian immediately.

ENVIRONMENTAL HAZARDS

This product is toxic to fish.

FIRST AID	
If in eyes:	<ul style="list-style-type: none">-Hold eye open and rinse slowly and gently with water for 15-20 minutes.-Remove contact lenses, if present, after the first 5 minutes, then continue rinsing eye.-Call a poison control center or doctor for treatment advice.
If on skin:	<ul style="list-style-type: none">-Take off contaminated clothing.-Rinse skin immediately with plenty of water for 15-20 minutes.-Call a poison control center or doctor for treatment advice.
HOT LINE NUMBER: Have the product container or label with you when calling a poison control center, doctor or veterinarian, or going for treatment. For additional information on this pesticide product (including human and veterinary health concerns, medical emergencies or pesticide incidents), you may call 1-800-950-4783 [1-800-766-7661/1-800-234-2269 or a Poison Control Center], twenty-four (24) hours per day, seven (7) days per week.	

DIRECTIONS FOR USE

It is a violation of Federal law to use this product in a manner inconsistent with its labeling.

IMPORTANT! READ ENTIRE LABEL BEFORE EACH USE.

USE RESTRICTIONS

For External Use Only.

For indoor use only.

Application of product on pets must only be done indoors.

DO NOT APPLY TO PUPPIES LESS THAN 12 WEEKS OF AGE

DO NOT USE ON DOGS OR PUPPIES WEIGHING LESS THAN [5-14] [15-30] [31-60] [61-150] LBS.

DO NOT ALLOW YOUR DOG/PUPPY TO INGEST THIS PRODUCT.

DO NOT EXCEED LABELED-DOSAGE AMOUNT FOR DOGS.

DO NOT APPLY MORE THAN ONE [TUBE/VIAL/CARTRIDGE] PER TREATMENT.

DO NOT HAVE CONTACT OR ALLOW CHILDREN TO HAVE CONTACT WITH TREATED AREA UNTIL COMPLETELY DRY.

DO NOT ALLOW CHILDREN TO APPLY PRODUCT

DO NOT USE ON OTHER ANIMALS

DO NOT DOUBLE-DOSE OR APPLY MORE THAN ONE APPLICATOR TO DOGS HEAVIER THAN 150 LBS. (Must be added to the 61-150 lb label.)

{Optional text for different tube designs (used on all size ranges)}

[Option 1]

Remove one applicator [tube/vial/cartridge] from the package and hold in an upright position (pointed away from your face). Pull off cap. Turn the cap around and place on top of [tube/vial/cartridge]. Simply press cap down to break the seal of the [tube/vial/cartridge]. Remove cap carefully. Position the tip of the [tube/vial/cartridge] on the dog's back between the shoulder blades. Use the tip of the [tube/vial/cartridge] to part the dog's hair so that the product will be applied at skin level. Begin squeezing out the contents of the [tube/vial/cartridge] to form a stripe as you move from the shoulder blades along the dog's back to the base of the tail. Repeat every month. (Do not bathe your dog 48 hours prior to application and your dog must remain dry for 48 hours after application.) Separate treated dog from other [dogs and cats] [pets] for 24 hours after treatment has been applied.

[Option 2]

Remove one applicator [tube/vial/cartridge] from the package and hold in an upright position pointed away from your face. Twist dispensing tip clockwise about ½ turn while pushing down to break the [tube's/vial's/cartridge's] seal. Do not remove the dispensing tip. Position the dispensing tip on the dog's back between the shoulder blades. Use the dispensing tip of the [tube/vial/cartridge] to part the dog's hair so that the product will be applied at skin level. Begin squeezing out the contents of the [tube/vial/cartridge] to form a stripe as you move from the shoulder blades along the dog's back to the base of the tail. Repeat every month. (Do not bathe your dog 48 hours prior to application and your dog must remain dry for 48 hours after

application.) Separate treated dog from other [dogs and cats] [pets] for 24 hours after treatment has been applied.

[Option 3]

Remove one applicator [tube/vial/cartridge] from the package and hold in an upright position (pointed away from your face). Pull off cap. Turn the cap around and place on top of tube. Simply press cap down to break the seal of the [tube/vial/cartridge]. Remove cap carefully. Position the tip of the [tube/vial/cartridge] on the dog's back at the base of the dog's tail. Use the tip of the [tube/vial/cartridge] to part the dog's hair so that the product will be applied at skin level. Begin squeezing out the contents of the [tube/vial/cartridge] to form a stripe as you move from the base of the tail along the dog's back to the shoulder blades. Repeat every month. (Do not bathe your dog 48 hours prior to application and your dog must remain dry for 48 hours after application.) Separate treated dog from other [dogs and cats] [pets] for 24 hours after treatment has been applied.

[Option 4]

Remove one applicator [tube/vial/cartridge] from the package and hold in an upright position pointed away from your face. Twist dispensing tip clockwise about ½ turn while pushing down to break the [tube's/vial's/cartridge's] seal. Do not remove the dispensing tip. Position the dispensing tip on the dog's back at the base of the dog's tail. Use the dispensing tip of the [tube/vial/cartridge] to part the dog's hair so that the product will be applied at skin level. Begin squeezing out the contents of the [tube/vial/cartridge] to form a stripe as you move from the base of the tail along the dog's back to the shoulder blades. Repeat every month. (Do not bathe your dog 48 hours prior to application and your dog must remain dry for 48 hours after application.) Separate treated dog from other [dogs and cats] [pets] for 24 hours after treatment has been applied.

(Option 5) DIRECTIONS FOR USE WITH [brand][Smart Shield™] APPLICATOR

Applicator Included

To apply the [Brand] treatment, use one disposable liquid cartridge [tube][vial][for each application] with the [brand][Smart Shield™] applicator device.

ONLY FOR TOY/SMALL SIZE DOGS/PUPPIES 12 weeks of age or older and weighing 5-14 lbs. {OR}

ONLY FOR MEDIUM SIZE DOGS/PUPPIES 12 weeks of age or older and weighing 15-30 lbs.

1. OPEN [icon]

Use finger scoop to lift open [color, e.g. green] door.

2. LOAD [icon] (2 alternate statements)

-[To Load, place [tube][cartridge][vial] white side up into the open [brand][Smart Shield™] applicator with front of [tube][vial][cartridge] placed under tab on door]

-[To Load, place [tube][cartridge][vial] white side up into the [open] applicator with tip end of [tube][vial][cartridge] placed under [color][U-shaped] tab on door]

[Ensure that [tube] [cartridge][vial] fits securely in the [brand][Smart Shield™] applicator.]

3. CLOSE [icon]

Gently close the [color, e.g. green] door [and] the [tube] [cartridge][vial] will snap open.

4. APPLY [icon]

The dog/puppy should be standing for easy application. To apply, use [front edge of [brand][Smart Shield™] applicator] [tip] to part hair and get next to dog's/puppy's skin. Press

[circle] [[round] thumb pad] on [color-green] door [number][once] at each of two to three evenly

placed spots between the shoulder and the base of the tail. Do not apply an excessive amount of the solution at any one spot that could cause some of the solution to run off the side of the dog/puppy. Do not spread (Brand) by hand over the dog/puppy. Although the dog's/puppy's skin and hair oils will distribute the application over the entire dog/puppy, brushing the dog/puppy 12-24 hours after treatment will help to distribute the material over the skin.

5. DISPOSE [icon]

[When finished, hold [brand][Smart Shield™] applicator device over trash.] To dispose of empty [tube][cartridge][vial], open [color, e.g. green] door and drop empty [tube][cartridge][vial] into trash or offer for recycling if available. [Close [brand][Smart Shield™] applicator device door and store in original package.]

{Option 5}

ONLY FOR LARGE DOGS/PUPPIES 12 weeks of age or older and weighing 31-60

lbs. {OR}

ONLY FOR EXTRA LARGE DOGS/PUPPIES 12 weeks of age or older and weighing 61 -150 lbs.

1 OPEN [icon]

Use finger scoop to lift open [color, e.g. green] door.

2 LOAD [icon] (2 alternate statements)

-[To Load, place [tube][cartridge][vial] white side up into the open [brand][Smart Shield™] applicator with front of [tube][cartridge][vial] placed under tab on door]

-[To Load, place [tube][cartridge][vial] white side up into the [open] applicator with tip end of [tube][cartridge][vial] placed under [color][U-shaped] tab on door]

[Ensure that [tube][cartridge][vial] fits securely in the [brand][Smart Shield™] applicator.]

3 CLOSE [icon]

Gently close the [color, e.g. green] door [and] the [tube][cartridge][vial] will snap open.

4 APPLY [icon]

The dog should be standing for easy application. To apply, use [front edge of [brand][Smart Shield™] applicator][tip] to part hair and get next to dog's/puppy's skin. Press [circle] [[round] thumb pad] on [color][green] door [number-once] at each of four or five evenly placed spots between the shoulder to the base of the tail. Do not apply an excessive amount of the solution at any one spot that could cause some of the solution to run off the side of the dog/puppy. Do not spread (Brand) by hand over the dog/puppy. Although the dog's/puppy's skin and hair oils will distribute the application over the entire dog/puppy, brushing the dog/puppy 12-24 hours after treatment will help to distribute the material over the skin.

5 DISPOSE [icon]

[When finished, hold [brand][Smart Shield™] applicator device over trash.] To dispose of empty [tube][cartridge][vial], open [color, e.g. green] door and drop empty [tube][cartridge][vial] into trash or offer for recycling if available. [Close [brand][Smart Shield™] applicator device door and store in original package.]

<Brand> is most effective when used as part of a total flea and tick management program. Use other [Brand Name] products registered for residential area control of these pests in conjunction with this treatment. Apply monthly for control of fleas. .

[TREATMENT SCHEDULE]			
Dosage: 1 [cartridge] [tube][vial] every 30 days per dog/puppy			
Dog/s/Puppy's Name	First Treatment Date	Second Treatment Date (30 Days From 1 st)	Third Treatment Date (30 Days From 2 nd)

Reminder: I purchased <Brand> from: _____ NOTES: _____
 {Treatment table can be expanded based on package size, but will not exceed 3 months}]

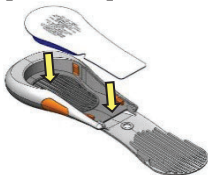
{Alternate Sets of ICONS (Option 5) for the <Brand>}

[ICON SET 1]

[OPEN]



[LOAD]



[CLOSE]



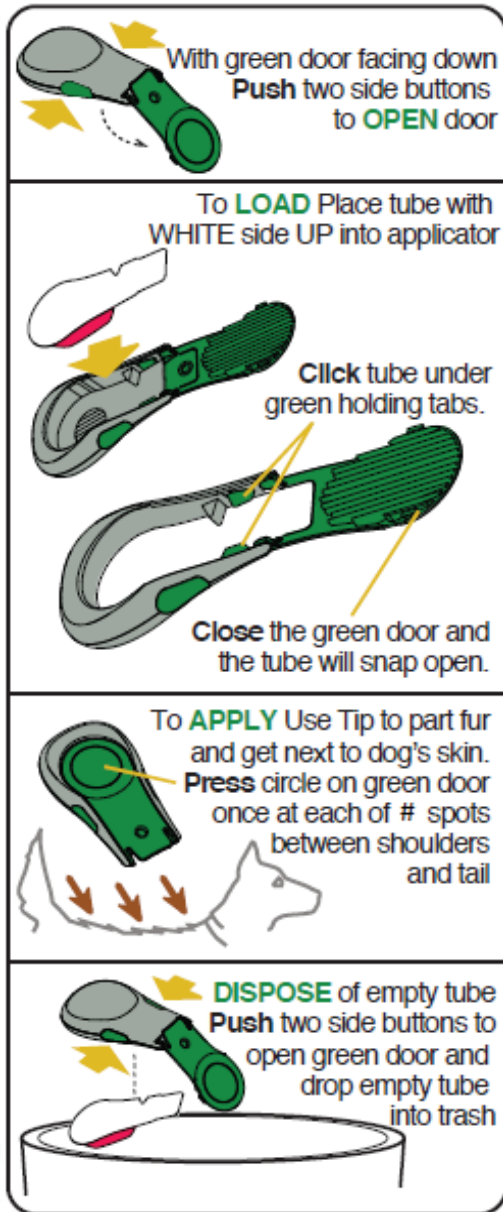
[APPLY]



[DISPOSE]



{**ICON SET 2 ALTERNATE ICONS (Option 5) FOR DIRECTIONS FOR USE** (will be specific to dog's/puppy's size)}



{{("#Spots" is a variable dependent on size)
Door color may change based on brand.
(Alternate LOAD icon)}}

{**ICON SET 3** ALTERNATE ICONS (Option 5) FOR DIRECTIONS FOR USE (will be specific to dog's/puppy's size)}



{{“#Spots” is a variable dependent on size}
Door color may change based on brand.}}

{{(OPTION 6) DIRECTIONS FOR USE FOR DIRECT APPLICATION TO DOG/PUPPY}}

To apply the <Brand> treatment, use one disposable liquid [cartridge][tube][vial] for each application.

ONLY FOR TOY/SMALL SIZE DOGS/PUPPIES 12 weeks of age and older and weighing 5-14 lbs. {OR}

ONLY FOR MEDIUM SIZE DOGS/PUPPIES 12 weeks of age or older and weighing 15-30 lbs.

1. [Bend at perforation and tear off first [tube][cartridge][vial].]
2. [Hold [tube][cartridge][vial] [and bend area of plastic at perforation, tear off and discard.]]
Hold [tube][cartridge][vial] upright and snap tip back, away from face and body.
3. The dog/puppy should be standing for easy application. Apply <Brand> evenly to two to three spots on the top of the back from the shoulder to the base of the tail. At each spot, part the hair until the skin is visible. Place the tip of the tube [cartridge][vial] on the skin and gently squeeze to expel a portion of the solution on the skin. Do not apply an excessive amount of the solution at any one spot that could cause some of the solution to run off the side of the dog/puppy.
4. Do not spread <Brand> by hand over the dog/puppy. Although the dog's/puppy's skin and hair oils will distribute the application over the entire dog/puppy, brushing the dog/puppy 12-24 hours after application will help to distribute the material over the skin.
5. Discard empty [tube] [cartridge][vial] as described in Storage and Disposal

ONLY FOR LARGE DOGS/PUPPIES 12 weeks of age or older and weighing 31 to 60 lbs. {OR}

ONLY FOR EXTRA LARGE DOGS/PUPPIES 12 weeks of age or older and weighing 61-150 lbs.

1. [Bend at perforation and tear off first [tube][cartridge][vial].]
2. [Hold [tube][cartridge][vial] [and bend area of plastic at perforation, tear off and discard.]]
Hold [tube] [cartridge][vial] upright and snap tip back, away from face and body
3. The dog/puppy should be standing for easy application. Apply <Brand> evenly to four or five spots on the top of the back from the shoulder to the base of the tail. At each spot, part the hair until the skin is visible. Place the tip of the tube [cartridge][vial] on the skin and gently squeeze to expel a portion of the solution on the skin. Do not apply an excessive amount of the solution at any one spot that could cause some of the solution to run off the side of the dog/puppy.
4. Do not spread <Brand> by hand over the dog/puppy. Although the dog's/puppy's skin and hair oils will distribute the application over the entire dog/puppy, brushing the dog/puppy 12-24 hours after application will help to distribute the material over the skin.
5. Discard empty [tube][cartridge][vial] as described in Storage and Disposal

<Brand> is most effective when used as part of a total flea and tick management program. Use other [Brand Name] products registered for residential area control of these pests in conjunction with this treatment. Apply monthly for control of fleas.

[TREATMENT SCHEDULE Dosage: 1 [cartridge] [tube][vial] every 30 days per dog/puppy			
Dog's/Puppy's Name	First Treatment Date	Second Treatment Date (30 Days From 1 st)	Third Treatment Date (30 Days From 2 nd)

Reminder: I purchased <Brand> from: _____

NOTES: _____

Treatment table can be expanded based on package size, but will not exceed 3 months.]

**{{(Option 7) DIRECTIONS FOR USE WITH <brand>[Smart Shield™]
APPLICATOR-REFILL PACKAGE-}}**

[To apply the <Brand> treatment with the [Brand Name] [Smart Shield™] applicator, use one disposable liquid [cartridge][tube][vial][for each application] with the [brand][Smart Shield™] applicator device.]

[Remove one refill [tube] [cartridge][vial] from the package and insert into opened [brand name] [Smart Shield™] applicator device. Make application according to label directions supplied with the <brand>[Smart Shield™] applicator device.] .

[However, if you choose to apply directly to dog/puppy without using the <brand>[Smart Shield™] applicator device, read and follow the Directions for Use For Direct Application to Dog /Puppy on this package.]

SIDE EFFECTS

Monitor your dog after application. Side effects may include signs of skin irritation such as redness, scratching, or other signs of discomfort. Gastrointestinal signs such as vomiting or diarrhea have also been reported. If these or other side effects occur, consult your veterinarian or call 1-800-950-4783.

{A box labeled Side Effects will be immediately above the cat warning box on the back panel.}



{A 1.5cm x 1.5cm cat prohibition icon and warning text in a box will be located at the lower right hand corner of the back panel in yellow with black images and text.}

STORAGE AND DISPOSAL

PESTICIDE STORAGE: ~~Keep this product in its tightly closed original container, when~~ not in use. Store in a cool, dry (preferably locked) area that is inaccessible to children and animals.

PESTICIDE DISPOSAL: Wastes resulting from the use of this product may be disposed of on site or at an approved waste disposal facility.

CONTAINER DISPOSAL: Non-refillable container. Do not reuse or refill this container. *If empty:* Offer for recycling, if available. *If partly filled:* Do not pour or dispose down the drain or sewer. Call your local solid waste agency for local disposal options.:

[For more information call our (flea and tick) experts at 1-800-950-4783 (weekdays, 9 am – 5 pm E.S.T.)]

{INDIVIDUAL TUBE/VIAL/CARTRIDGE TEXT}



Insert “Product Name “or ABN

{Product name will be followed by one of the following minimum dog weight treated statements}

For use **ONLY** on dogs/puppies 12 weeks and older, Weighing 5 to 14 lbs.

For use **ONLY** on dogs/puppies 12 weeks and older, Weighing 15 to 30 lbs

For use **ONLY** on dogs/puppies 12 weeks and older, Weighing 31 to 60 lbs

For use **ONLY** on dogs/puppies 12 weeks and older, Weighing 61 to 150 lbs

[Active Ingredients:]

Etofenprox 55.0%, PBO10.0%, MGK 264 1.0%, Pyriproxyfen 0.5%

Keep Out of Reach of Children

CAUTION

Read entire accompanying label before use

For External Use Only

{Range of volumes from 0.031 fl. oz. (.91 mL) to 0.066 fl. oz. (1.95 mL) to 0.132 fl. oz. (3.90 mL) to 0.220 fl. oz (6.5 ml) depending upon weight of dog}

EPA Reg. No. 2724-842

EPA Est. No.

Batch/Lot No.

OPTIONAL/ALTERNATE LABEL TEXT

(Rapidly) (Quickly) kills fleas within 15 minutes

Kills [(and) (&) Repels] Mosquitoes, Prevent re-infestation(s) for (30 days) (1 month) (4 weeks)

Kills [(and) (&) Repels] Mosquitoes (before they bite) (for) (30 days) (1 month) (4 weeks)

Kills Mosquitoes (for) (28 days) (30 days) (1 month) (4 weeks)

After the applied treatment has spread over the dog's body, this product will kill newly infesting fleas within 15 minutes.

24 hours after application, this product will kill fleas by contact within 15 minutes.

When fully protected by full coverage of this product, infesting fleas will be killed within 15 minutes.

Kills Fleas, Brown Dog Ticks, Deer Ticks, Flea Eggs, (Flea larvae)(after contact)(through contact),

Kills [(and)(&)Repels] Mosquitoes, Prevents re-infestation(s) (for)(30 day)(1 month)(4 weeks)

Kills Fleas, Brown Dog (Ticks) (and) Deer Ticks, Flea Eggs, (Flea larvae) (through contact) (for) (30 days) (1 month) (4 weeks)

Kills Fleas, Brown Dog (Ticks) (and) Deer Ticks, Flea Eggs, (Flea larvae) (after contact) (for) (30 days) (1 month) (4 weeks)

Kills Fleas, Brown Dog (Ticks) (and) Deer Ticks, Flea Eggs, (Flea larvae) (after contact) (through contact)

Kills [(and) (&) Repels] Mosquitoes, Prevent re-infestation(s) (for) (30 days) (1 month) (4weeks)

Kills [(and) (&) Repels] Mosquitoes (before they bite) (for) (30 days) (1 month) (4weeks)

Kills Mosquitoes (for) (30 days) (1 month) (4weeks)

Kills Fleas (that may transmit tapeworm) (for) (30 days) (1 month) (4 weeks) (on dogs) Kills fleas that may cause flea allergy dermatitis (and flea bite anemia) (for) (30 days) (1 month) (4 weeks) (on dogs)

Kills Brown Dog Ticks and Deer Ticks (for) (30 days) (1 month) (4 weeks) (on dogs) Kills Flea Eggs (and Flea Larvae) (for) (30 days) (1 month) (4 weeks)

Prevents Flea Eggs from hatching

Kills Brown Dog Ticks (for) (30 days) (1 month) (4 weeks)

Kills Deer Ticks (that may carry Lyme disease) (for) (28 days) (30 days) (1 month) (4 weeks)(on dogs)

Kills all biting stages of Brown Dog Ticks and Deer Ticks

Kills adult Brown Dog Ticks and Deer Ticks, nymphs and larvae

Kills Fleas, Brown Dog Ticks, Deer Ticks, Flea Eggs, (Flea larvae)

Kills Fleas, Brown Dog Ticks, Deer Ticks, Flea Eggs, (Flea larvae) (through contact) (for) (30 days) (1 month) (4 weeks)

Kills Fleas, Brown Dog Ticks, Deer Ticks, Flea Eggs, (Flea larvae) (after contact) (for) (30 days) (1 month) (4 weeks)

Controls Flea (and) (Brown Dog Tick) (and) (Deer Tick) infestations (on dogs) (for) (30 days) (1 month) (4 weeks)

Helps prevent re-infestation of fleas (and) (Brown Dog Tick) (and) (Deer Tick) (for) (30 days)

(1 month) (4 weeks)

~~Helps prevent flea (and) (Brown Dog Tick) (and) (Deer Tick) re-infestation (for) (30 days) (1 month) (4 weeks)~~

Kills flea eggs and flea larvae to help prevent future re-infestations

Kills all stages of the flea life cycle

Breaks the flea life cycle

Repels Mosquitoes (before they bite) (for) (1 month) (4 weeks) Repels (and controls) Mosquitoes (for) (1 month) (4 weeks) Controls mosquitoes (for) (1 month) (4 weeks).

Repels Mosquitoes that may transmit West Nile virus (for) (1 month) (4 weeks)(on dogs)

Repels Mosquitoes that may transmit heartworm (for) (1 month) (4 weeks)(on dogs) Once-a month Flea (and Brown Dog Tick, and Deer Tick)(Prevention) (Treatment) (Control) (Solution)

Monthly Flea (and Brown Dog Tick, and Deer Tick)(Prevention) (Treatment) (Control) (Solution)

(30 day) (1 month) (4 weeks)Flea (and Brown Dog Tick, and Deer Tick) (Prevention) (Treatment) (Control) (Solution)

Prevents flea eggs from developing into biting adults (for) (up to) (30 days) (1 month) (4 weeks)

Quick drying formula

Dries quickly

Quick drying

Stays on and doesn't rub off

Spreads with dog's natural skin oils

By one day after application, starts killing fleas within 15 minutes

By one day after application, starts killing fleas within 15 minutes and lasts for 30 days (1 month) (4 weeks) Kills fleas for 30 days (1 month) (4 weeks)

Prevents re-infestation(s) (for) (30 days) (1 month) (4 weeks)

Prevents and controls re-infestation(s) (for) (30 days) (1 month) (4 weeks)

Effective and convenient topical treatment

Kills fleas (and Brown Dog, Deer Ticks) through (after) contact

(With) patented applicator (D702563, D725486, and D725485)

Easy spot on topical applicator

Waterproof control of flea eggs (and larvae) (Dog must be dry for 48 hours prior and post application)

Kills fleas before they have a chance to lay eggs

(Quick Drying) (Formula)

[Brand] [Smart Shield™] Applicator Claims

[Brand] [Smart Shield™] Applicator easily [quickly] gets through dog's fur, for on-skin application

[Brand] [Smart Shield™] Applicator easily [quickly] penetrates dog's fur, for on-skin application

[Brand] [Smart Shield™] Applicator glides [smoothly] through the dog's fur

[Brand] [Smart Shield™] Applicator easily gets through [penetrates] dog's fur to minimize (oily) residue

[Brand] [Smart Shield™] Applicator features rounded edges for on-skin application

[Brand] [Smart Shield™] Applicator features an angled tip to help guide the application

Direct to your dog's skin

To help remind you when you last applied treatment, simply write in the date when each dose is applied:

[New] contemporary design

[brand name] [Smart Shield™] [Applicator] helps to prevent getting liquid on [your] hands

[brand name] [Smart Shield™] [Applicator] tip parts hair to help [liquid][application] get down to [the][your][dog's/puppy's] skin

Ergonomically contoured [ergonomic][shape][design] for easy handling [ease of use] [easy use]

For use with [only][brand name][disposable][liquid dispensing] tubes [pods] [vials] [cartridges]

[brand name] [Smart Shield™] [applicator][has][provides][allows for][delivers] better grip

[brand name][provides] re-closable [re-sealable] packaging for [easy] storage

Closing [the][brand name] [Smart Shield™] [applicator] door automatically opens the

[disposable][liquid dispensing] tube [pod][vial][cartridge]

[brand name] [Smart Shield™] [Applicator] [will not drip after opening]

[brand name] [Smart Shield™] [Applicator] Won't drip when set down as you go fetch the [your] dog/puppy

Includes unique [brand] [Smart Shield™] applicator

Puts the liquid on your dog/puppy – not your hands

Directs the liquid onto your dog [/puppy] – not your hands

[Brand] [Smart Shield™] [Applicator] provides a [more confident][secure] application

Directs the liquid onto your dog [/puppy] – away from your hands

Applies liquid to your dog's [/puppy's] skin – not yours

[Introducing] [Breakthrough] Convenient, easy to use ACCU-TIP [Brand] [Smart Shield™] [Applicator] [DISPENSER]

[Easy to use] Longer [Brand] [Smart Shield™] applicator tip for easy application to long-haired dogs/puppies

[Brand] [Smart Shield™] Applicator patent nos. D702563, D725486, and D725485

Thermoform claims

[disposable][liquid dispensing] tube [cartridge][vial][pod]

[brand name][disposable][liquid dispensing] [tube][vial][pod] tip helps to spread out liquid [on your dog/puppy]

Unique [cartridge] [tube][vial][pod] with flow control

No Drip [no mess][application][tube][cartridge][vial][pod]

Refill Claims

For use [only] with [brand name] [Smart Shield™] [Applicator]

[1][3] monthly treatments

[1][3] Months Supply

Easy to use [convenient] refills

Can be used with [Use with] [Brand Name][Smart Shield™] applicator

Refill Pack [Refills] for [Brand Name] [Smart Shield™] Applicator

[tube][cartridge][vial][pod] refill pack [refills]

Refills [Refill Pack] available

New [refill][tube][cartridge][vial][pod] design

Applicator name options (applicator device is used in text)

Applicator

Tool

Device

Applicator Device

Application Tool

Thermoform name options (tube, cartridge and vial are used in the text)

Ampoule

Cartridge

Packet

Pod

Refill

Tube

Vial

NON-PESTICIDE RELATED CLAIMS AND OTHER OPTIONAL TEXT

{The total in the package will not exceed what is specified on the application form}

1st dose, 2nd dose, 3rd dose

First month, second month, third month

X-tubes

X month supply

X monthly treatment(s)

Fragrance-free

Unscented

Fresh (scent) (fragrance)

Powder (scent) (fragrance)

Pleasant (scent) (fragrance)

Spring Fresh Scent

(Convenient)(easy to use) applicator

After application, the treated area may appear wet [or] [oily] for up to 24 hours

Do not bathe your dog for 48 hours after application

To help remind you when you last applied treatment, simply write in the date when each dose is applied:

First Dose _____

Second Dose _____

Third Dose _____

Xth Dose _____

(Manufactured for:)

Wellmark International

1501 East Woodfield Road 200W

Schaumburg, IL 60173

Made in the USA