



UNITED STATES ENVIRONMENTAL PROTECTION AGENCY
WASHINGTON, DC 20460

OFFICE OF CHEMICAL SAFETY
AND POLLUTION PREVENTION

January 22, 2020

Martin Hoagland, Ph.D.
Senior Regulatory Manager
Wellmark International
1501 E. Woodfield Rd., Suite 200W
Schaumburg, IL 60173

Subject: Label and CSF Amendment – Revision of Basic CSF and addition of Sublabel B for alternate packaging
Product Name: RF2174 Fly Bait Station
EPA Registration Number: 2724-839
Application Date: September 25, 2019
Decision Number: 556128/557876

Dear Dr. Hoagland:

The amended label and CSF referred to above, submitted in connection with registration under the Federal Insecticide, Fungicide and Rodenticide Act, as amended, are acceptable. This approval does not affect any conditions that were previously imposed on this registration. You continue to be subject to existing conditions on your registration and any deadlines connected with them.

A stamped copy of your labeling is enclosed for your records. This labeling supersedes all previously accepted labeling. You must submit one copy of the final printed labeling before you release the product for shipment with the new labeling. In accordance with 40 CFR 152.130(c), you may distribute or sell this product under the previously approved labeling for 18 months from the date of this letter. After 18 months, you may only distribute or sell this product if it bears this new revised labeling or subsequently approved labeling. "To distribute or sell" is defined under FIFRA section 2(gg) and its implementing regulation at 40 CFR 152.3.

Please note that the record for this product currently contains the following CSF(s):

- Basic CSF dated 01/18/2019

Should you wish to add/retain a reference to the company's website on your label, then please be aware that the website becomes labeling under the Federal Insecticide Fungicide and Rodenticide Act and is subject to review by the Agency. If the website is false or misleading, the product would be misbranded and unlawful to sell or distribute under FIFRA section 12(a)(1)(E). 40 CFR 156.10(a)(5) list examples of statements EPA may consider false or misleading. In addition, regardless of whether a website is referenced on your product's label, claims made on the website may not substantially differ from those claims approved through the registration process. Therefore, should the Agency find or if it is brought to our attention that a website contains false

Page 2 of 2
EPA Reg. No. 2724-839
Decision No. 556128/557876

or misleading statements or claims substantially differing from the EPA approved registration, the website will be referred to the EPA's Office of Enforcement and Compliance.

Your release for shipment of the product constitutes acceptance of these conditions. If these conditions are not complied with, the registration will be subject to cancellation in accordance with FIFRA section 6. If you have any questions, please contact Kevin Ulrich by phone at 703-347-0464, or via email at ulrich.kevin@epa.gov.

Sincerely,

A handwritten signature in blue ink, appearing to read "Gene Benbow".

Gene Benbow, Product Manager 7
Invertebrate & Vertebrate Branch 3
Registration Division (7505P)
Office of Pesticide Programs

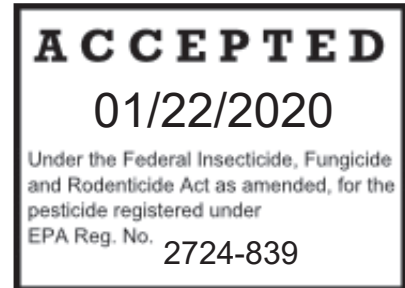
Enclosure: Amended Label

SUBLABEL A: Fly Bait Strip - Clamshell
[] Indicates optional marketing text

RF2174 FLY BAIT STATION

Kills house and lesser house flies
Knocks down house and lesser house flies in minutes
Quick knockdown*
Easy to use
Compatible with IPM programs

*in minutes



ACTIVE INGREDIENT:

Dinotefuran1%

OTHER INGREDIENTS:99%

Total.....100%

KEEP OUT OF REACH OF CHILDREN

NET CONTENTS: X stations [bait strips] [twin pack]

EPA Reg No. 2724-839

EPA Est. No.

PRECAUCION AL USUARIO:

Si usted no lee ingles, no use este producto hasta que la etiqueta haya sido explicada ampliamente.

The RF2174 [Name Brand] Fly Bait Station's [strip's] active ingredient is contained in a [yellow] sugar-based matrix that flies find irresistible. Shortly after feeding on the matrix, the flies will begin to die. The RF2174 [Name Brand] Fly Bait Station's [strip's] triple action fly attractant attracts flies to the product [strip] [station] area. Ventilation will not diminish the effectiveness of the RF2174 [Name Brand] Fly Bait Station [strip] since it works by fly feeding action.

DIRECTIONS FOR USE: It is a violation of Federal Law to use this product in a manner inconsistent with the labeling.

USE RESTRICTIONS:

Do not apply in areas accessible by animals, children and pets.
Do not place where rain or daily activity will get stations [strips] wet.
DO NOT remove the attractant tube or empty its contents. Note: The attractant has a strong odor.

WHERE TO APPLY

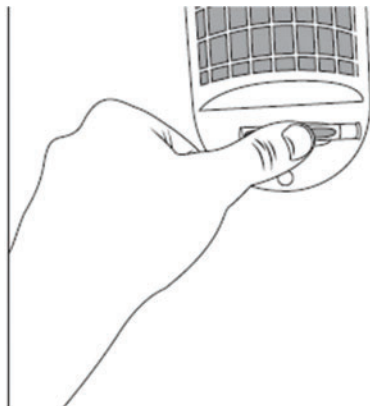
Use RF2174 [Brand Name] Fly Bait Station around: garbage chutes, dumpsters, loading docks, waste containers, grease pits, rest areas, outdoor rest room facilities, in and around stables, dairy barns, milking parlors, loafing sheds, kennels, poultry houses, aviaries, swine houses, feedlots, refuse and recycling facilities, around commercial food-handling facilities, restaurants, bars, groceries, stores, and other facilities where house flies and lesser house flies are a nuisance.

For optimum results, place the station within four feet of the ground where flies generally forage for food. Bait stations placed in rafters or areas higher than 4 feet will not be as effective. For longest residual activity, protect station from direct sunlight and excessive moisture.

HOW TO APPLY

Remove the RF2174 Fly Bait Station [strip] from the protective pouch. Handle by grasping curved ends of station [strip]. To activate attractant, simply squeeze/snap the attractant tube until a snapping sound is heard.

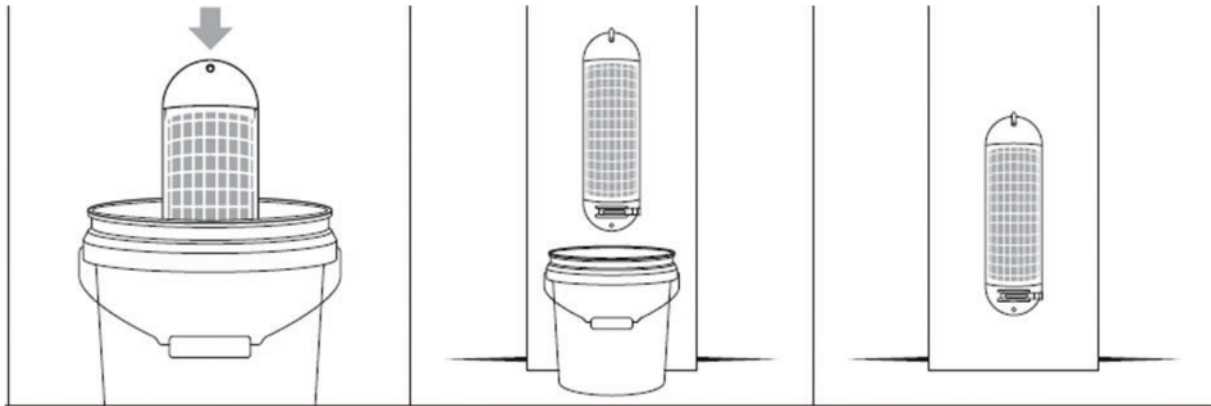
(Optional graphics)



Apply the station [strip] one of two ways:

1. Affix on a stationary object low to the ground. (Do not hang from one end in breezy area as flies will not land on moving objects.) The station may be placed at any angle but is most effective when placed on a flat surface.
2. To contain killed flies, RF2174 [Name Brand] Fly Bait Station may be leaned upright in a bucket or box partially filled with sand, a brick or other weight to keep it from being blown over.

(Optional graphics)



USE RATE

In enclosed structures or sites with low to moderate house fly populations, use 1 station [strip] per 300 ft². In open structures or sites with high house fly populations, use 1 station [strip] per 100-150 ft².

Replace when effectiveness diminishes. Note: When the yellow coloring of the strip [insert] is gone [mostly gone], the station [strip] will not be effective.

STORAGE AND DISPOSAL: Do not contaminate water, food, or feed by storage or disposal. **PESTICIDE STORAGE:** Store in a cool, dry place away from children and animals. Keep strips in original unopened package until ready to use. Do not store unused strips in anything but original package. **PESTICIDE DISPOSAL:** To avoid wastes, use all material in this container by application according to label directions. If wastes cannot be avoided, offer remaining product to a waste disposal facility or pesticide disposal program (often such programs are run by state or local governments or by industry.) **CONTAINER HANDLING:** Nonrefillable container. Do not reuse or refill this container. Do not reuse strips. Offer for recycling if available or dispose of empty pouch and box in a sanitary landfill or by incineration or, if allowed by state and local authorities, by burning. If burned, stay out of smoke.

WARRANTY AND CONDITIONS OF SALE: To the extent consistent with applicable law, Wellmark International warrants this product in its unopened package conforms to the chemical description on the label and is reasonably fit for the purposes set forth on the label when used according to directions under normal use conditions as specified on this label. To the extent consistent with applicable law, there are no other warranties, expressed or implied, concerning the use of this product other than as indicated on the label. This warranty does not extend to the handling or use of this product contrary to label instructions or under abnormal conditions or conditions not reasonably foreseeable to seller, and buyer assumes all risk of any such use.

For information or in emergency call **1-800-XXX-XXXX**, or visit our web site:
www.starbarproducts.com

[Manufactured for]
Wellmark International
1501 East Woodfield Road 200W
Schaumburg, IL 60173

Made in USA

INDIVIDUAL STRIP

(Embossed in plastic)

ACTIVE INGREDIENT: Dinotefuran 1%

EPA Reg. No. 2724-839

EPA Est No.

KEEP OUT OF REACH OF CHILDREN

Refer to outer package for Directions for Use

Wellmark International

SUBLABEL B: Fly Bait Panels-No Clamshell

[] Indicates optional marketing text

RF2174 FLY BAIT STATION

Kills house and lesser house flies
Knocks down house and lesser house flies in minutes
Quick knockdown*
Easy to use
Compatible with IPM programs
[Fully] [Completely] accessible surface area for flies to [find] feed on
Attractive color to lure flies
Odor free
No sticky mess
[Panel][Sheet][Strip][Station] with fly killing formula

*in minutes

ACTIVE INGREDIENT:

Dinotefuran 1%

OTHER INGREDIENTS:99%

Total..... 100%

KEEP OUT OF REACH OF CHILDREN

NET CONTENTS: X [stations][sheets][strips][panels] [X pack] {Will have total and individual net contents}

EPA Reg No. 2724-839

EPA Est. No.

PRECAUCION AL USUARIO:

Si usted no lee ingles, no use este producto hasta que la etiqueta haya sido explicada ampliamente.

The RF2174 Fly Bait Station's [Name Brand] [station's][strip's][panel's][sheet's] active ingredient is contained in a [yellow] sugar-based matrix that flies find irresistible. Shortly after feeding on the matrix, the flies will begin to die. Ventilation will not diminish the effectiveness of the RF2174 Fly Bait Station [Name Brand] [station][strip][sheet][panel] since it works by fly feeding action.

DIRECTIONS FOR USE: It is a violation of Federal Law to use this product in a manner inconsistent with the labeling.

USE RESTRICTIONS:

Do not apply in areas accessible by animals, children and pets.

Do not place where rain or daily activity will get the [station][strips][panels][sheets] wet.

WHERE TO APPLY

Use RF2174 Fly Bait Station [Brand Name] around: garbage chutes, dumpsters, loading docks, waste containers, grease pits, rest areas, outdoor restroom facilities, in and around stables, dairy barns, milking parlors, loafing sheds, kennels, poultry houses, aviaries, swine houses, feedlots, refuse and recycling facilities, around commercial food-handling facilities, restaurants, bars, groceries, stores, and other facilities where house flies and lesser house flies are a nuisance.

For optimum results, place the [station] [strip][sheet][panel] within four feet of the ground where flies generally forage for food. Bait [stations] [strips][panels][sheets] placed in rafters or areas higher than 4 feet will not be as effective. For longest residual activity, protect [station] [strip][sheet][panel] from direct sunlight and excessive moisture.

HOW TO APPLY

Open packaging containing RF2174 Fly Bait Station [Brand name]. Remove desired number of [stations][strips][panels][sheets] from the package. Handle by the ends of RF2174 Fly Bait Station [Brand name] and apply to the desired areas. Affix on a stationary object low to the ground. [Do not hang from one end in breezy area as flies will not land on moving objects.] The [station][strip][sheet][panel] may be placed at any angle but yellow side must be facing out, and [station][strip][sheet][panel] is most effective when placed on a flat surface, including walls or poles. [Station][Strip][Sheet][Panel] may be attached to surfaces using adhesives or fasteners such as nails, clips, or staples. If adhesive tape is used, cover as little area of the yellow sugar matrix as reasonably possible, to ensure maximum insecticide availability to flies. Close [pouch][bag][package][container] after removal of desired quantity of [stations][strips][panels][sheets] and store remainder in a cool, dry place away from children and animals. Wash hands after applying product.

USE RATE

In enclosed structures or sites with low to moderate house fly populations, use 1 [station][strip][sheet][panel] per 300 ft². In open structures or sites with high house fly populations, use 1 [station][strip][sheet][panel] per 100-150 ft². Replace when effectiveness diminishes. Note: When the yellow coloring of the [station][strip][panel][sheet] is gone [mostly gone], the [station][strip][sheet][panel] will not be as effective.

STORAGE AND DISPOSAL: Do not contaminate water, food, or feed by storage or disposal.
PESTICIDE STORAGE: Store in a cool, dry place away from children and animals. Keep [stations][strips][sheets][panels] in original unopened package until ready to use. Do not store unused [stations][strips][panels][sheets] in anything but original package. **PESTICIDE DISPOSAL:** To avoid wastes, use all material in this container by application according to label directions. If wastes cannot be avoided, offer remaining product to a waste disposal facility or pesticide disposal program (often such programs are run by state or local governments or by industry.) **CONTAINER HANDLING:** Nonrefillable container. Do not reuse or refill this container. Do not reuse [stations][strips][sheets][panels]. Offer for recycling if available or dispose of empty [container][pouch][bag][and box] in a sanitary landfill or by incineration or, if allowed by state and local authorities, by burning. If burned, stay out of smoke.

WARRANTY AND CONDITIONS OF SALE: To the extent consistent with applicable law, Wellmark International warrants this product in its unopened package conforms to the chemical description on the label and is reasonably fit for the purposes set forth on the label when used according to directions under normal use conditions as specified on this label. To the extent consistent with applicable law, there are no other warranties, expressed or implied, concerning the use of this product other than as indicated on the label. This warranty does not extend to the handling or use of this product contrary to label instructions or under abnormal conditions or conditions not reasonably foreseeable to seller, and buyer assumes all risk of any such use.

For information or in emergency call **1-800-XXX-XXXX**, or visit our web site:
www.starbarproducts.com

[Manufactured for]
Wellmark International
1501 East Woodfield Road 200W
Schaumburg, IL 60173

Made in USA

INDIVIDUAL [STATION] [STRIP][SHEET][PANEL]

ACTIVE INGREDIENT: Dinotefuran 1%

EPA Reg. No. 2724-839

KEEP OUT OF REACH OF CHILDREN

Refer to outer package for Directions for Use

Wellmark International