



U.S. ENVIRONMENTAL PROTECTION AGENCY
 Office of Pesticide Programs
 Registration Division (7505P)
 1200 Pennsylvania Ave., N.W.
 Washington, D.C. 20460

EPA Reg. Number:

2724-829

Date of Issuance:

8/12/22

NOTICE OF PESTICIDE:

Registration
 Reregistration

(under FIFRA, as amended)

Term of Issuance:

Conditional

Name of Pesticide Product:

RF2187 CDSO Plus II for Dogs

Name and Address of Registrant (include ZIP Code):

Noelle S. Sanfilippo
 Regulatory Affairs Specialist
 Central Garden & Pet Company
 1501 E. Woodfield Road, Suite 200W
 Schaumburg, IL 60173

Note: Changes in labeling differing in substance from that accepted in connection with this registration must be submitted to and accepted by the Registration Division prior to use of the label in commerce. In any correspondence on this product always refer to the above EPA registration number.

On the basis of information furnished by the registrant, the above named pesticide is hereby registered under the Federal Insecticide, Fungicide and Rodenticide Act.

Registration is in no way to be construed as an endorsement or recommendation of this product by the Agency. In order to protect health and the environment, the Administrator, on his motion, may at any time suspend or cancel the registration of a pesticide in accordance with the Act. The acceptance of any name in connection with the registration of a product under this Act is not to be construed as giving the registrant a right to exclusive use of the name or to its use if it has been covered by others.

This product is conditionally registered in accordance with FIFRA section 3(c)(7)(A). You must comply with the following conditions:

1. Submit and/or cite all data required for registration/reregistration/registration review of your product under FIFRA when the Agency requires all registrants of similar products to submit such data.

Signature of Approving Official:

Elizabeth Fertich, Product Manager 04
 Invertebrate & Vertebrate Branch 1
 Registration Division (7505P)
 Office of Pesticide Programs

Date:

8/12/22

2. Consistent with the guidance on [Pet Spot-On Enhanced Reporting Implementation \(updated Aug. 2019\)](#), the Agency has reviewed your request to remove the two-year registration expiration date and has found your company to be in compliance with the terms and conditions for the subject product. The accepted label dated 08/05/22 contains appropriate mitigation measures. Further, the Agency has reviewed a sample of enhanced reporting using EPA's standardized templates, as described in Condition 3. hereafter, and concluded that the use of the standardized templates for enhanced reporting for this product will considerably improve pharmacovigilance and thus the continued safety of this product. Therefore, the Agency is removing the two-year registration expiration date for this product. The product remains subject to all other previously required conditions of registration, including the submission of enhanced incident reports and sales information as stated in the amendment letter dated 3/13/13 and amended below to require continued use of the standardized templates.
3. The Agency has reviewed your request to change the terms of your registration from quarterly to annual submission of enhanced incident and sales reports using EPA's standardized templates. Based on an initial screening of sample enhanced reports, the sample submission was determined to be adequate and the templates were successfully used. Therefore, the condition of quarterly submission of enhanced incident and sales reports is hereby amended to annual submission with continued use of these standardized templates. You must submit enhanced incident and sales reports for this product to the Agency every 12 months from the date the product is first released for shipment, or from the end date in the last quarterly enhanced reporting submission. The initial released-for-shipment date must be provided to the Product Manager, once known. The enhanced reporting submission should be addressed to the Product Manager's attention and must use the standardized, electronic templates available on the EPA website through the following links: [Enhanced Incident Reporting Template](#), [Sales Reporting Template](#). Submissions must be received by the Agency no later than 60 days following the completion of the 12-month period. If the product is not marketed or sold, you must submit to the Product Manager a letter to this effect every 12 months in lieu of the enhanced incident and sales reports. Please follow appropriate procedures and flag any Confidential Business Information as such.
4. Submit one copy of the final printed label for the record before you release the product for shipment.

Should you wish to add/retain a reference to the company's website on your label, then please be aware that the website becomes labeling under the Federal Insecticide Fungicide and Rodenticide Act and is subject to review by the Agency. If the website is false or misleading, the product would be misbranded and unlawful to sell or distribute under FIFRA section 12(a)(1)(E). 40 CFR 156.10(a)(5) list examples of statements EPA may consider false or misleading. In addition, regardless of whether a website is referenced on your product's label, claims made on the website may not substantially differ from those claims approved through the registration process. Therefore, should the Agency find or if it is brought to our attention that a website contains false or misleading statements or claims substantially differing from the EPA approved registration, the website will be referred to the EPA's Office of Enforcement and Compliance.

The Agency, in accordance with the Federal Insecticide, Fungicide and Rodenticide Act (FIFRA), as amended, has completed reviewing all of the information submitted with your application to support the Registration Review of the above referenced product in connection with the pyriproxyfen Interim Decision, and has concluded that your submission is acceptable.

If you fail to satisfy these terms and conditions, EPA will consider appropriate regulatory action including, among other things, cancellation under FIFRA section 6(e). A stamped copy of the label is enclosed for your records.

Please note that the record for this product currently contains the following CSFs:

- Basic CSF dated 04/20/2021

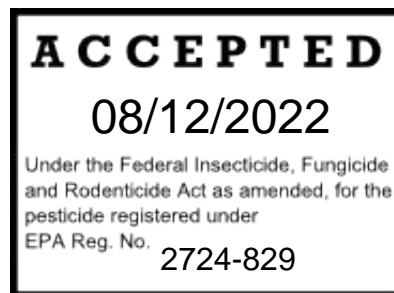
If you have any questions, you may contact Robert Mitchell at 202-566-2842 or via email at mitchell.robert@epa.gov.

Enclosure

Text within braces { } denotes notes to reviewer.
Text within brackets [] denotes optional language.
Text within parentheses () is to be included on the label

{This label has two sub-labels:
SUB-LABEL A – APPLICATOR DEVICE PACKAGE
SUB-LABEL B FOR REFILLPACKAGE}

{SUB-LABEL A – APPLICATOR DEVICE PACKAGE}



RF2187 CDSO Plus II for Dogs

{Front Panel:}

Font size for word "Dog" in product name must be at least 75% the height of the largest letter in the primary brand name

Front Panel: For Use only on [Toy/Small (5-14 lbs.)], [Medium (15-30 lbs.)], [Large (31-60 lbs.)], [Extra Large (61-150 lbs.)] Dogs/Puppies 12 weeks of age or older

[Flea & Tick [& Mosquito][Treatment] [and] Control only for Dogs/Puppies 12 weeks of age or older]

Do not use on dogs or puppies weighing less than [5][15][31][61] {as appropriate for package size} lbs and under 12 weeks of age



Picture

{A large, clear picture of a dog in the weight range for the product as packaged will be on the front panel}

{Each brand name product will be packaged in the weight classes designated below}
Weighing 5 to 14 lbs./15 to 30 lbs./31 to 60 lbs./61-150 lbs.}

ACTIVE INGREDIENTS:

Etofenprox	50.00%
Piperonyl Butoxide*	9.10%
N-octyl bicycloheptene dicarboximide (MGK 264)	0.91%
Pyriproxyfen	0.45%
(S)-Methoprene	0.23%
OTHER INGREDIENTS:	<u>39.31%</u>
TOTAL	100.00%

*(butyl carbityl)(6-propylpiperonyl) ether and related compounds

KEEP OUT OF REACH OF CHILDREN CAUTION

See back/side panel for First Aid and additional precautionary statements.

For Dogs and Puppies Weighing:	Tubes per Package	Net Contents (Each tube)
5 to 14 lbs.	[6][3][1]	[0.204]/[0.102]/[0.034] fl. oz. total (1.0 ml.)
15 to 30 lbs.	[6][3][1]	[0.444]/[0.222]/[0.074] fl. oz. total (2.2 ml.)
31 to 60 lbs.	[6][3][1]	[0.894]/[0.447]/[0.149] fl. oz. total (4.4 ml.)
61 to 150 lbs.	[6][3][1]	[1.482]/[0.741]/[0.247] fl. oz. total (7.3 ml.)

EPA Reg. No. 2724-829

EPA Est. No. 2724-TX-1

Batch/Lot No. ____



{A 1.5cm x 1.5cm cat prohibition icon will be in a box in the lower right hand corner of the front panel in yellow with black images.}

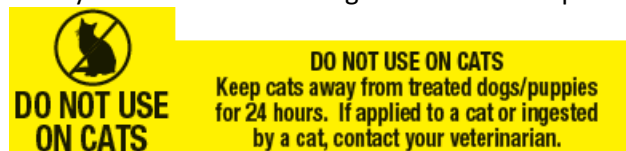
{Back/Other Panel}

READ ENTIRE LABEL BEFORE EACH USE

IMPORTANT - Do not use on dogs or puppies weighing less than [5][15][31][61] {as appropriate for package size} lbs and under 12 weeks of age

Side Effects: Monitor your dog after application. Side effects may include signs of skin irritation such as redness, scratching, or other signs of discomfort. Gastrointestinal signs such as vomiting or diarrhea have also been reported. If these or other side effects occur, consult your veterinarian or [Brand name] at [phone number].

{A box labeled Side Effects will be immediately above the cat warning box on the back panel}



{A 1.5cm x 1.5cm cat prohibition icon and warning text in a box will be located at the lower right hand corner of the back panel in yellow with black images and text.}

PRECAUTIONARY STATEMENTS

CAUTION

HAZARDS TO HUMANS

Causes moderate eye irritation. Avoid contact with eyes, skin, or clothing. Wash thoroughly with soap and water after handling and before eating, drinking, chewing gum, using tobacco, or using the toilet.

HAZARDS TO DOMESTIC ANIMALS

DO NOT USE ON CATS OR OTHER ANIMALS.] Use only on dogs or puppies more than 12 weeks old weighing [5-14] [15-30], [31-60], [61-150] {as appropriate for package size} lbs. This product is not a substitute for prescribed heartworm preventative. Do not use this product on debilitated, aged, medicated, pregnant or nursing animals or on animals known to be sensitive to pesticide products without first consulting a veterinarian. Sensitivity, such as slight transitory redness of the skin at the site of application, may occur after using ANY

pesticide product for pets. If signs of sensitivity occur, bathe your pet with mild soap, rinse with large amounts of water, and consult a veterinarian immediately.

FIRST AID	
If in eyes	<ul style="list-style-type: none">• Hold eye open and rinse slowly and gently with water for 15-20 minutes.• Remove contact lenses, if present, after the first 5 minutes, then continue rinsing eye.• Call a poison control center or doctor for treatment advice.
If on skin or clothing	<ul style="list-style-type: none">• Take off contaminated clothing.• Rinse skin immediately with plenty of water for 15-20 minutes.• Call a poison control center or doctor for treatment advice.
HOT LINE NUMBER: Have the product container or label with you when calling a poison control center, doctor or veterinarian, or going for treatment. For additional information on this pesticide product (including health concerns, medical emergencies or pesticide incidents), you may call 800-234-2269.	

DIRECTIONS FOR USE WITH [brand][Smart Shield™] APPLICATOR

It is a violation of Federal law to use this product in a manner inconsistent with its labeling. Read and follow all directions and precautions on this product label. [If you choose to apply directly to dog without using the [brand][Smart Shield™] applicator device, read and follow the Directions for Use For Direct Application to Dog on this package.]

USE RESTRICTIONS:

For indoor use only

Do Not Allow Children to Apply this Product.

For external use only

Do not apply this product to puppies less than 12 weeks of age.

Do not apply to dogs/puppies weighing less than [5][15][31][61] lbs. .

Dog must be standing and dry at time of application

Do not use more than one [tube][vial][cartridge]* per dog/puppy per treatment regardless of the dog's weight

Do not treat more than once per month.

Do not allow your dog/puppy to ingest this product.

Do not bathe your dog 48 hours prior to application. Do not allow cats to groom treated dogs In households with dogs and cats, the cat will often groom the dog as well as itself. Separate treated dogs from cats for 24 hours after treatment to [minimize][reduce potential] oral exposure to your cat.

*{The same word will be used consistently throughout the entire label.}

RF2187 CDSO Plus II for Dogs works by application directly to the dog's/puppy's skin, not to the hair. When applying, use [brand][Smart Shield™] applicator device tip to push aside dog's/puppy's hair to allow direct application to the skin.

RF2187 CDSO Plus II for Dogs provides a unique [brand][Smart Shield™] applicator device that allows dog/puppy owners to treat their dogs/puppies more securely, and dispose of liquid cartridges [tubes][vials]with less mess.

{Note: Each package contains [cartridges]/[tubes]/[vials] for [1][3][6] application[s]}

{The application steps below may optionally be formatted as a paragraph, or by number or bullets to clarify the order, depending on the final physical layout of the label}

To apply the RF2187 CDSO Plus II for Dogs treatment, use one disposable liquid [cartridge] [tube][vial][for each application] with the [brand][Smart Shield™] applicator device.

FOR [[TOY]/[SMALL]][[MEDIUM] SIZE DOGS/PUPPIES WEIGHING [5 TO 14 LBS.][15 TO 30 LBS.]

1. OPEN [icon] {see pgs 8-10 for icon options}

Use finger scoop to lift open [color, e.g. green] door.

2. LOAD [icon] {see pgs 8-10 for icon options} (2 alternate statements)

-[To Load, place tube [cartridge][vial] white side up into the open [brand][Smart Shield™] applicator with front of tube placed under tab on door]

-[To Load, place tube [cartridge][vial] white side up into the [open] applicator with tip end of tube placed under [color][U-shaped] tab on door]

[Ensure that tube [cartridge][vial] fits securely in the [brand][Smart Shield™] applicator.]

3. CLOSE [icon] {see pgs 8-10 for icon options}

Gently close the [color, e.g. green] door [and] the tube [cartridge][vial] will snap open.

4. APPLY [icon] {see pgs 8-10 for icon options}

The dog/puppy should be standing for easy application. To apply, use [front edge of [brand][Smart Shield™] applicator] [tip] to part hair and get next to dog's/puppy's skin. Press [circle] [[round] thumb pad] on [color-green] door [number][once] at each of two to three evenly placed spots between the shoulder and the base of the tail. Do not apply an excessive amount of the solution at any one spot that could cause some of the solution to run off the side of the dog/puppy. Do not spread RF2187 CDSO Plus II for Dogs by hand over the dog/puppy. Although the dog's/puppy's skin and hair oils will distribute the application over the entire dog/puppy, brushing the dog/puppy 12-24 hours after treatment will help to distribute the material over the skin.

5. DISPOSE [icon] {see pgs 8-10 for icon options}

[When finished, hold [brand][Smart Shield™] applicator device over trash.] To dispose of empty tube [cartridge][vial], open [color, e.g. green] door and drop empty tube [cartridge][vial] into trash or offer for recycling if available. [Close [brand][Smart Shield™] applicator device door and store in original package.]

FOR [LARGE][EXTRA LARGE] DOGS/PUPPIES WEIGHING [31 TO 60 LBS.][61 TO 150 LBS.]

1 OPEN [icon] {see pgs 8-10 for icon options}

... Use finger scoop to lift open [color, e.g. green] door

2 LOAD [icon] {see pgs 8-10 for icon options}{2 alternate statements}
-[To Load, place tube [cartridge][vial] white side up into the open [brand][Smart Shield™] applicator with front of tube placed under tab on door]

... [To Load, place tube [cartridge][vial] white side up into the [open] applicator with tip end of tube placed under [color][U-shaped] tab on door] [Ensure that tube [cartridge][vial] fits securely in the [brand][Smart Shield™] applicator.]

3 CLOSE [icon] {see pgs 8-10 for icon options}
... Gently close the [color, e.g. green] door [and] the tube [cartridge][vial] will snap open.

4 APPLY [icon] {see pgs 8-10 for icon options}

The dog should be standing for easy application. To apply, use [front edge of [brand][Smart Shield™] applicator][tip] to part hair and get next to dog's/puppy's skin. Press [circle] [[round] thumb pad] on [color][green] door [number-once] at each of four or five evenly placed spots between the shoulder to the base of the tail. Do not apply an excessive amount of the solution at any one spot that could cause some of the solution to run off the side of the dog/puppy. Do not spread RF2187 CDSO Plus II for Dogs by hand over the dog/puppy. Although the dog's/puppy's skin and hair oils will distribute the application over the entire dog/puppy, brushing the dog/puppy 12-24 hours after treatment will help to distribute the material over the skin.

5 ...DISPOSE [icon] {see pgs 8-10 for icon options}
[When finished, hold [brand][Smart Shield™] applicator device over trash.] To dispose of empty tube [cartridge][vial], open [color, e.g. green] door and drop empty tube [cartridge][vial] into trash or offer for recycling if available. [Close [brand][Smart Shield™] applicator device door and store in original package.]

RF2187 CDSO Plus II for Dogs is most effective when used as part of a total flea and tick management program. Use other [Brand Name] products registered for residential area control of these pests in conjunction with this treatment. Monthly treatments are required for optimal control and prevention of fleas.

[The successive feeding activity of fleas on dogs/puppies may elicit a hypersensitivity skin disorder known as flea allergy dermatitis (FAD). Treatment of dogs/puppies with RF2187 CDSO Plus II for Dogs kills fleas which may reduce the incidence of this condition. .]

[TREATMENT SCHEDULE			
Dosage: 1 [cartridge] [tube][vial] every 30 days per dog/puppy			
Dog/s/Puppy's Name	First Treatment Date	Second Treatment Date (30 Days From 1 st)	Third Treatment Date (30 Days From 2 nd)

Reminder: I purchased RF2187 CDSO Plus II for Dogs from: _____

NOTES: _____

Treatment table can be expanded based on package size. (6 months)]

STORAGE AND DISPOSAL

PESTICIDE STORAGE: Keep this product in its tightly closed original container, when not in use. Store in a cool, dry (preferably locked) area that is inaccessible to children and pets.

CONTAINER DISPOSAL: Do not reuse empty cartridge [vial][tube]. If empty: Place in trash or offer for recycling if available. If partly filled: Call your local solid waste agency for disposal instructions. Do not dispose of down-the-drain or sewer..

WARRANTY AND CONDITIONS OF SALE:

Seller warrants that this product conforms to the chemical specifications expressed on the label. To the extent consistent with applicable law, Seller makes no other warranties, and disclaims all other warranties, express or implied, including but not limited to warranties of merchantability and fitness for the intended purpose. To the extent consistent with applicable law, seller's liability for default, breach, or failure under this label shall be limited to the amount of the purchase price. To the extent consistent with applicable law, Seller shall have no liability for consequential damages.

[For more information call our (flea and tick) experts at 1-800-234-2269]

In case of emergency or for product information, call 1-800-234-2269 or in case of emergency or if your dog is experiencing an adverse event, contact your veterinarian. t.

Wellmark International
 1501 E. Woodfield Road. 200W
 Schaumburg, Illinois 60173
[adampetcare.com]

INDIVIDUAL TUBE TEXT

RF2187 CDSO Plus II for Dogs [Brand Name]

For Use only on [toy/small (5-14 lbs)], [medium (15-30 lbs)], [large (31-60 lbs)], [Extra Large (61-150 lbs)] dogs/puppies & 12 wks [of age] or older

Etofenprox 50% PBO 9.1% MGK 264 0.91% Pyriproxyfen 0.45% S-Methoprene 0.23%

KEEP OUT OF REACH OF CHILDREN

CAUTION

For External Use Only

Read Entire Label Before Each Use

Range of volumes from [0.034 fl. oz. (1.0 ml)][0.074 fl. oz. (2.2 mL)][0.149 fl. oz. (4.4 mL)] to [0.247 fl. oz (7.3 ml)] {depending upon weight of dog}

EPA Reg. No. 2724-829

[EPA Est. No.]

[Batch/Lot No.]



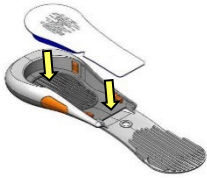
{Alternate Sets of ICONS for the RF2187 CDSO Plus II for Dogs}

{ICON SET 1}

[OPEN]



[LOAD]



[CLOSE]



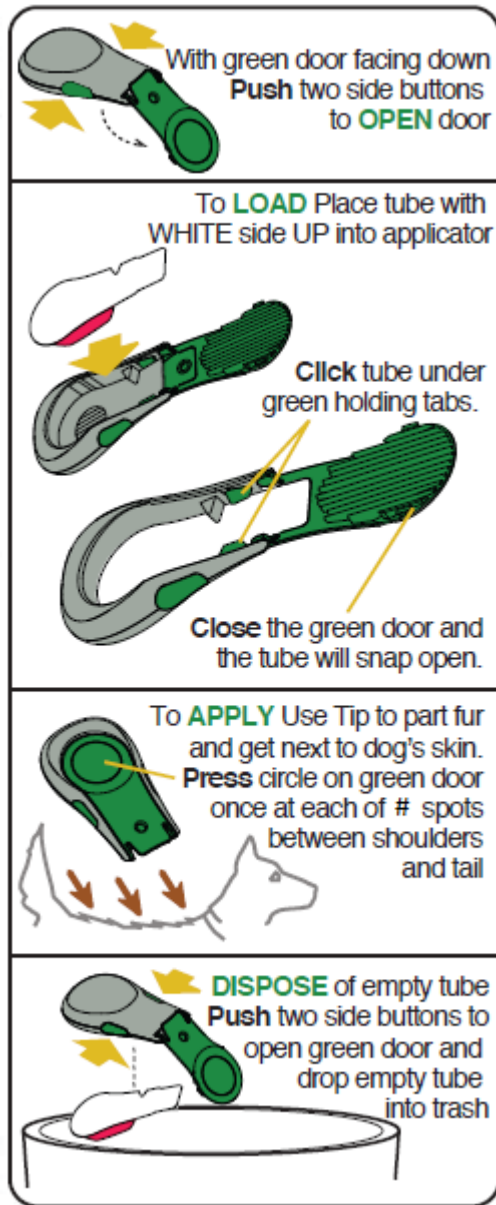
[APPLY]



[DISPOSE]



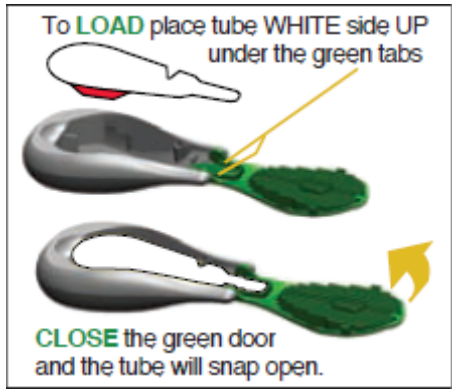
{**ICON SET 2**} {ALTERNATE ICONS FOR DIRECTIONS FOR USE (will be specific to dog's/puppy's size)}



{{“#Spots” is a variable dependent on size – see Directions For Use}

Door color may change based on brand.

(Alternate LOAD icon)}



{**ICON SET 3**} {ALTERNATE ICONS FOR DIRECTIONS FOR USE (will be specific to dog's/puppy's size)}



{ (“#Spots” is a variable dependent on size – see Directions For Use)
Door color may change based on brand.}

[2. DIRECTIONS FOR USE FOR DIRECT APPLICATION TO DOG/PUPPY]

USE RESTRICTIONS:

For Indoor Use Only

Do Not Allow Children to Apply this Product.

For external, use only

Do not apply this product to puppies less than 12 weeks of age.

Do not apply to dogs/puppies weighing less than [5][15][31][61] lbs.

Do not use more than one [tube][vial][cartridge] per dog/puppy per treatment regardless of the dog's weight.

Dog must be standing and dry at time of application

Do not treat more than once per month.

Do not allow your dog/puppy to ingest this product.

Do not bathe your dog 48 hours prior to application.

Do not allow cats to groom treated dogs In households with dogs and cats, the cat will often groom the dog as well as itself. Separate treated dogs from cats for 24 hours after treatment to [minimize][reduce potential] oral exposure to your cat.

RF2187 CDSO Plus II for Dogs works by application directly to the dog's/puppy's skin, not to the hair. When applying, manually push aside dog's/puppy's hair to allow direct application to the skin.

{Note: Application is one [cartridge][tube][vial] per dog per application}

{Note: Each package contains [tubes]/[applicators] for [1][3][6] application[s]}

{The application steps below may optionally be formatted as a paragraph, or by number or bullets to clarify the order, depending on the final physical layout of the label}

To apply the RF2187 CDSO Plus II for Dogs treatment, use one disposable liquid [cartridge] [tube][vial] for each application.

FOR [TOY/SMALL][MEDIUM] SIZE DOGS/PUPPIES WEIGHING [5 TO 14 LBS.][15 TO 30 LBS.]

1. [Bend at perforation and tear off first [tube][cartridge][vial].]
2. [Hold [tube][cartridge][vial] [and bend area of plastic at perforation, tear off and discard.]] Hold [tube][cartridge][vial] upright and snap tip back, away from face and body.
3. The dog/puppy should be standing for easy application. Apply RF2187 CDSO For Dogs Plus II evenly to two to three spots on the top of the back from the shoulder to the base of the tail. At each spot, part the hair until the skin is visible. Place the tip of the tube [cartridge][vial] on the skin and gently squeeze to expel a portion of the solution on the skin. Do not apply an excessive amount of the solution at any one spot that could cause some of the solution to run off the side of the dog/puppy.
4. Do not spread RF2187 CDSO Plus II for Dogs by hand over the dog/puppy. Although the dog's/puppy's skin and hair oils will distribute the application over the entire dog/puppy, brushing the dog/puppy 12-24 hours after application will help to distribute the material over the skin.
5. Discard empty [tube] [cartridge][vial] as described in Storage and Disposal

FOR [LARGE][EXTRA LARGE] DOGS/PUPPIES WEIGHING [31 TO 60 LBS.][61 TO 150 LBS.]

1. [Bend at perforation and tear off first [tube][cartridge][vial].]
2. [Hold [tube][cartridge][vial] [and bend area of plastic at perforation, tear off and discard.]] Hold [tube] [cartridge][vial] upright and snap tip back, away from face and body
3. The dog/puppy should be standing for easy application. Apply RF2187 CDSO Plus II for Dogs evenly to four or five spots on the top of the back from the shoulder to the base of the tail. At each spot, part the hair until the skin is visible. Place the tip of the tube [cartridge][vial] on the skin and gently squeeze to expel a portion of the solution on the skin. Do not apply an excessive amount of the solution at any one spot that could cause some of the solution to run off the side of the dog/puppy.
4. Do not spread RF2187 CDSO Plus II for Dogs by hand over the dog/puppy. Although the dog's/puppy's skin and hair oils will distribute the application over the entire dog/puppy, brushing the dog/puppy 12-24 hours after application will help to distribute the material over the skin.
5. Discard empty [tube][cartridge][vial] as described in Storage and Disposal

RF2187 CDSO Plus II for Dogs is most effective when used as part of a total flea and tick management program. Use other [Brand Name] products registered for residential area control of these pests in conjunction with this treatment. Monthly treatments are required for optimal control and prevention of fleas.

[The successive feeding activity of fleas on dogs/puppies may elicit a hypersensitivity skin disorder known as flea allergy dermatitis (FAD). Treatment of dogs/puppies with RF2187 CDSO Plus II for Dogs kills fleas which may reduce the incidence of this condition.]

[TREATMENT SCHEDULE			
Dosage: 1 [cartridge] [tube][vial] every 30 days per dog/puppy			
Dog's/Puppy's Name	First Treatment Date	Second Treatment Date (30 Days From 1 st)	Third Treatment Date (30 Days From 2 nd)

Reminder: I purchased RF2187 CDSO Plus II for Dogs from: _____

NOTES:_____

Treatment table can be expanded based on package size. (6 months)]]

{SUB-LABEL B FOR REFILLPACKAGE}

{For use with [brand][Smart Shield™] applicator device or direct application to dog/puppy without [brand][Smart Shield™] applicator device}

{Front Panel:}

RF2187 CDSO Plus II for Dogs

Font size for word “Dog” in product name must be at least 75% the height of the largest letter in the primary brand name

Front Panel: For Use only on [Toy/Small (5-14 lbs.)], [Medium (15-30 lbs.)], [Large (31-60 lbs.)], and [Extra Large (61-150 lbs.)] Dogs/Puppies 12 weeks of age or older

[Flea & Tick [& Mosquito][Treatment] [and] Control only for Dogs/Puppies 12 weeks of age or older]

Do not use on dogs or puppies weighing less than [5][15][31][61] {as appropriate for package size} lbs and under 12 weeks of age



Picture

{A large, clear picture of a dog in the weight range for the product as packaged will be on the front panel}

[Each brand name product will be packaged in the weight classes designated below] Weighing [5 to 14 lbs.]/[15 to 30 lbs.]/[31 to 60 lbs.]/[61-150 lbs.]

ACTIVE INGREDIENTS:

Etofenprox	50.00%
Piperonyl Butoxide*	9.10%
N-octyl bicycloheptene dicarboximide (MGK 264)	0.91%
Pyriproxyfen	0.45%
(S)-Methoprene.....	0.23%

OTHER INGREDIENTS:39.31%

TOTAL 100.00%

*(butyl carbityl)(6-propylpiperonyl) ether and related compounds

KEEP OUT OF REACH OF CHILDREN CAUTION

See back/other panel for First Aid and additional precautionary statements.

For Dogs and Puppies Weighing:	Tubes per Package	Net Contents (Each tube)
5 to 14 lbs.	[6][3][1]	0.204/0.102/0.034 fl. oz. total (1.0 ml.)
15 to 30 lbs.	[6][3][1]	0.444/0.222/0.074 fl. oz. total (2.2 ml.)
31 to 60 lbs.	[6][3][1]	0.894/0.447/0.149 fl. oz. total (4.4 ml.)
61 to 150 lbs.	[6][3][1]	1.482/0.741/0.247 fl. oz. total (7.3 ml.)

EPA Reg. No. 2724-829
EPA Est. No. 2724-TX-1
Batch/Lot No. ____



{A 1.5cm x 1.5cm cat prohibition icon will be in a box in the lower right hand corner of the front panel in yellow with black images.}

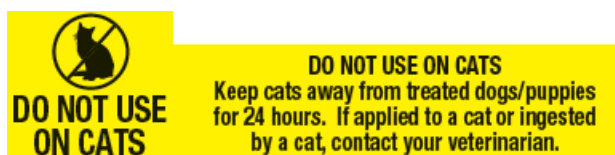
{Back/Other Panel}

READ ENTIRE LABEL BEFORE EACH USE

IMPORTANT - Do not use on dogs or puppies weighing less than [5][15][31][61] {as appropriate for package size} lbs and under 12 weeks of age

Side Effects: Monitor your dog after application. Side effects may include signs of skin irritation such as redness, scratching, or other signs of discomfort. Gastrointestinal signs such as vomiting or diarrhea have also been reported. If these or other side effects occur, consult your veterinarian or [Brand name] at [phone number].

{A box labeled Side Effects will be immediately above the cat warning box on the back panel}



{A 1.5cm x 1.5cm cat prohibition icon and warning text in a box will be located at the lower right hand corner of the back panel in yellow with black images and text.}

PRECAUTIONARY STATEMENTS

CAUTION

HAZARDS TO HUMANS

Causes moderate eye irritation. Avoid contact with eyes, skin, or clothing. Wash thoroughly with soap and water after handling and before eating, drinking, chewing gum, using tobacco, or using the toilet.

HAZARDS TO DOMESTIC ANIMALS

DO NOT USE ON CATS OR OTHER ANIMALS. Use only on dogs or puppies more than 12 weeks old weighing [5-14] [15-30], [31-60], [61-150]{as appropriate for package size} lbs. This product is not a substitute for prescribed heartworm preventative. Do not use this product on debilitated, aged, medicated, pregnant or nursing animals or on animals known to be sensitive to pesticide products without first consulting a veterinarian. Sensitivity, such as slight transitory redness of the skin at the site of application, may occur after using ANY pesticide product for pets. If signs of sensitivity occur, bathe your pet with mild soap, rinse with large amounts of water, and consult a veterinarian immediately.

FIRST AID	
If in eyes	<ul style="list-style-type: none"> • Hold eye open and rinse slowly and gently with water for 15-20 minutes. • Remove contact lenses, if present, after the first 5 minutes, then continue rinsing eye. • Call a poison control center or doctor for treatment advice.
If on skin or clothing	<ul style="list-style-type: none"> • Take off contaminated clothing. • Rinse skin immediately with plenty of water for 15-20 minutes. • Call a poison control center or doctor for treatment advice.
<p>HOT LINE NUMBER: Have the product container or label with you when calling a poison control center, doctor or veterinarian, or going for treatment. For additional information on this pesticide product (including health concerns, medical emergencies or pesticide incidents), you may call 1-800-234-2269.</p>	

DIRECTIONS FOR USE: It is a violation of Federal Law to use this product in a manner inconsistent with its labeling. Read and follow all directions and precautions on this product label.

[To apply the RF2187 CDSO Plus II for Dogs treatment with the [Brand Name] [Smart Shield™] applicator, use one disposable liquid cartridge [tube][vial][for each application] with the [brand][Smart Shield™] applicator device.]

[Remove one refill tube [cartridge][vial] from the package and insert into opened [brand name] [Smart Shield™] applicator device. Make application according to label directions supplied with the [brand][Smart Shield™] applicator device.] If you need directions for application, please call 1-800-234-2269.

[However, if you choose to apply directly to dog/puppy without using the [brand][Smart Shield™] applicator device, read and follow the Directions for Use For Direct Application to Dog /Puppy on this package.]

(DIRECTIONS FOR USE FOR DIRECT APPLICATION TO DOG/PUPPY)

USE RESTRICTIONS
For Indoor Use Only
Do Not Allow Children to Apply this Product.
For external use only
Do not apply this product to puppies less than 12 weeks of age.
Do not apply to dogs/puppies weighing less than [5][15][31][61] lbs.
Do not use more than one tube [vial][cartridge] per dog/puppy per treatment regardless of the dog's weight.
Dog must be standing and dry at time of application
Do not treat more than once per month.
Do not allow your dog/puppy to ingest this product.
Do not bathe your dog 48 hours prior to application.
Do not allow cats to groom treated dogs In households with dogs and cats, the cat will often groom the dog as well as itself. Separate treated dogs from cats for 24 hours after treatment to [minimize][reduce potential] oral exposure to your cat.

RF2187 CDSO Plus II for Dogs works by application directly to the dog's/puppy's skin,

not to the hair. When applying, manually push aside dog's/puppy's hair to allow direct application to the skin.

{Note: Application is one [cartridge][vial][tube] per dog per application}

{Note: Each package contains [tubes][cartridges][vials] for [1][3][6] application[s]}

{The application steps below may optionally be formatted as a paragraph, or by number or bullets to clarify the order, depending on the final physical layout of the label}

To apply the RF2187 CDSO Plus II for Dogs treatment, use one disposable liquid cartridge [tube][vial] for each application.

FOR [TOY/SMALL][MEDIUM] SIZE DOGS/PUPPIES WEIGHING [5 TO 14 LBS.][15 TO 30 LBS.]

1. [Hold [tube][cartridge][vial] [and bend area of plastic at perforation, tear off and discard.]] Hold [tube][cartridge][vial] upright and snap tip back, away from face and body.
2. The dog/puppy should be standing for easy application. Apply RF2187 CDSO Plus II for Dogs evenly to two to three spots on the top of the back from the shoulder to the base of the tail. At each spot, part the hair until the skin is visible. Place the tip of the tube [cartridge][vial] on the skin and gently squeeze to expel a portion of the solution on the skin. Do not apply an excessive amount of the solution at any one spot that could cause some of the solution to run off the side of the dog/puppy.
3. Do not spread RF2187 CDSO Plus II for Dogs by hand over the dog/puppy. Although the dog's/puppy's skin and hair oils will distribute the application over the entire dog/puppy, brushing the dog/puppy 12-24 hours after application will help to distribute the material over the skin..
4. Discard empty [tube] [cartridge][vial] as described in Storage and Disposal

FOR [LARGE][EXTRA LARGE] DOGS/PUPPIES WEIGHING [31 TO 60 LBS.][61 TO 150 LBS.]

1. [Hold [tube] [cartridge][vial] [and bend area of plastic at perforation, tear off and discard.]] Hold [tube] [cartridge][vial] upright and snap tip back, away from face and body
2. The dog/puppy should be standing for easy application. Apply RF2187 CDSO Plus II for Dogs evenly to four or five spots on the top of the back from the shoulder to the base of the tail. At each spot, part the hair until the skin is visible. Place the tip of the tube [cartridge][vial] on the skin and gently squeeze to expel a portion of the solution on the skin. Do not apply an excessive amount of the solution at any one spot that could cause some of the solution to run off the side of the dog/puppy.
3. Do not spread RF2187 CDSO Plus II for Dogs by hand over the dog/puppy. Although the dog's/puppy's skin and hair oils will distribute the application over the entire dog/puppy, brushing the dog/puppy 12-24 hours after application will help to distribute the material over the skin..
4. Discard empty [tube] [cartridge][vial] as described in Storage and Disposal

RF2187 CDSO Plus II for Dogs is most effective when used as part of a total flea and tick management program. Use other [Brand Name] products registered for residential area control of these pests in conjunction with this treatment. Monthly treatments are required for optimal control and prevention of fleas.

[The successive feeding activity of fleas on dogs/puppies may elicit a hypersensitivity skin disorder known as flea allergy dermatitis (FAD). Treatment of dogs/puppies with RF2187 CDSO Plus II for Dogs kills fleas which may reduce the incidence of this condition. .]

[TREATMENT SCHEDULE			
Dosage: 1 [cartridge] [tube][vial] every 30 days per dog/puppy			
Dog's/Puppy's Name	First Treatment Date	Second Treatment Date (30 Days From 1 st)	Third Treatment Date (30 Days From 2 nd)

Reminder: I purchased RF2187 CDSO Plus II for Dogs from: _____

NOTES: _____

Treatment table can be expanded based on package size. (up to 6 months)]

{Precautionary/First Aid and Storage/Disposal) text as indicated on Sub-label A }

WARRANTY AND CONDITIONS OF SALE:

Seller warrants that this product conforms to the chemical specifications expressed on the label. To the extent consistent with applicable law, Seller makes no other warranties, and disclaims all other warranties, express or implied, including but not limited to warranties of merchantability and fitness for the intended purpose. To the extent consistent with applicable law, seller's liability for default, breach, or failure under this label shall be limited to the amount of the purchase price. To the extent consistent with applicable law, Seller shall have no liability for consequential damages.

In case of emergency or for product information, call 1-800-234-2269 or in case of emergency or if your dog is experiencing an adverse event, contact your veterinarian.

Wellmark International
 1501 East Woodfield Road 200W
 Schaumburg, Illinois 60173

OPTIONAL TEXT FOR PACKAGE INSERTS
OPTIONAL INSERT 1

Dear Valued [Store Customer],

Thank you for your purchase of [Product Name]. [Brand] wants the best for your dog, and we are pleased to share with you some great tips on using the product for the best results.

- A. The [Product Name] comes in 4 different sizes so that the right amount of flea and tick protection is applied to your size dog/puppy. Weigh your dog/puppy before applying [Product Name] and be sure that the product you purchased is the right size for your dog/puppy. Do not apply this product to dogs/puppies younger than 12 weeks. If you have questions, please call 1-800-234-2269 to talk to a product specialist.
- B. For best results, apply [Product Name] evenly to the dog's back in spots starting at the top of the back from the shoulders to the base of the tail. {one of two alternate statements} [Use two – three spots for toy/small or medium dogs] [Use four to five spots for large or extra large dogs.] At each spot, be sure to apply the product to your dog's skin, not to the surface of your dog's hair coat. For complete instructions on application, please read the package label.
- C. Sensitivities may occur after the use of any topically applied product. A dog's skin is a complex organ, and your dog's skin may be generally sensitive to topical products. Monitor your dog after application.
- D. When applying [Product Name] make sure not to get this product in your dog's/puppy's eyes or mouth.
- E. Do not allow cats to groom treated dogs. In households with dogs and cats, the cat will often groom the dog as well as itself. Separate treated dogs from cats for 24 hours after treatment to minimize [reduce potential] oral exposure to your cat.
- F. Treatment of fleas on your dog does not address the 95-99% of the flea population that lives in your house and yard. So even after your dog is treated with [Product Name] and adult fleas are killed, flea eggs may continue to hatch in your home for up to two months. For best results, treat your yard and home for fleas with treatments that contain an Insect Growth Regulator, which kills flea eggs. Over time, treatment of your dog and its environment will eliminate fleas from your home.

OPTIONAL INSERT 2

STOP. Please read this insert/card and the entire instructions before using this product.

[Brand Name] wants the best for your dog/puppy, and we are pleased to share with you some great tips for using the product.

- Use [Product Name] only as directed.
- Brush your dog's/puppy's coat 24 hours after application.
- Apply away from furniture and carpeting.
- Consult a veterinarian before using if your dog/puppy is aged, pregnant, nursing, or taking other medication.

[Contact a product specialist at 1-800-234-2269 with any questions.]

OPTIONAL/ALTERNATE LABEL TEXT

12 weeks of age or older and Weighing [5 to 14]/[15 to 30]/[31 to 60]/[61-150] lbs.
[(S) Only (for) (Small) Puppies 5-14 lbs and 12 weeks of age or older]
[(M) Only (for) (Medium) Dogs or puppies 15-30 lbs. and 12 weeks of age or older]
[(L) Only (for) (Large) Dogs or puppies 31-60 lbs. and 12 weeks of age or older]
[(XL) Only (for) (Extra Large) Dogs 61-150 lbs. and 12 weeks of age or older]

MARKETING CLAIMS AND OTHER OPTIONAL STATEMENTS

Kills [(and) (& Repels] Mosquitoes, Prevent re-infestation(s) for (1 month)
Kills [(and) (& Repels] Mosquitoes (before they bite) (for) (1 month)
Kills Fleas (that may transmit tapeworm) (for) (1 month) (on dogs)
Kills fleas that may cause flea allergy dermatitis (and flea bite anemia) (for) (1 month) (on dogs)
Kills Ticks (for) (1 month)
Kills Flea Eggs (and Flea Larvae) (for) (1 month)
Prevents Flea Eggs from hatching
Kills Brown Dog Ticks (for) (1 month)
Kills Deer Ticks (that may transmit Lyme disease) (for) (1 month) (on dogs)
Kills all biting stages of ticks
Kills [tick nymphs][and][kills][tick larvae]
Kills adult (brown dog) (deer) ticks, nymphs and larvae
Kills [adult] Fleas, Ticks, Flea eggs, (Flea larvae) (through contact)(after contact) (for) (1 month)
[on your dog]
Kills Fleas, Brown Dog Ticks, Deer Ticks, Flea Eggs, (Flea larvae) (through contact)(after contact) (for) (1 month)
Controls Flea and Tick infestations (on dogs) (for) (1 month)
Helps prevent re-infestation of fleas and ticks (for) (1 month)
Helps prevent flea and tick re-infestation (for) (1 month)
[Contains [*InfestStop™] [an Insect Growth Regulator (IGR) to kill flea eggs [and larvae]] and prevent flea development for (1 month)]
[Breaks Flea Life Cycle for 1 month)]
An important step in breaking the flea life cycle
[Controls flea reinfestation for (1 month)]
[With [*InfestStop™][S-Methoprene] Insect Growth Regulator [IGR] to Break Flea Life Cycle]

*InfestStop/Infestop™ logo



[Plus][Contains][With] PRECOR® [vIGRen®][S-Methoprene][*InfestStop™], the first insect growth regulator for flea control
[(S)-Methoprene][*InfestStop™] Insect Growth Regulator (IGR) interrupts the development of the flea life cycle [at the egg stage]
[(S)-Methoprene][*InfestStop™] Insect Growth Regulator (IGR) prevents the development of flea eggs into adult fleas and [inhibits the development of flea eggs into adult fleas]
Flea control for dogs with [PRECOR®][vIGRen®] [*InfestStop™] Insect Growth Regulator (IGR)
[Kills][Prevents][Keeps] flea eggs from hatching for (1 month)]
***(S)-Methoprene Must occur on same panel wherever InfestStop™ is used**
Helps [Keep][Prevent] Fleas & Ticks from [coming back][returning]
Kills flea eggs and flea larvae to help prevent future [re]-infestations
Kills all stages of the flea life cycle
Breaks the flea [and tick] life cycle(s)

Repels Mosquitoes (before they bite) (for) (1 month)
Repels Mosquitoes that may transmit West Nile virus (for) (1 month) (on dogs)
Repels Mosquitoes that may transmit heartworm (for) (1 month) (on dogs)
Once a month (Monthly) Flea and Tick (Prevention) (Treatment) (Control) (Solution) (1 month) Flea and Tick (Prevention) (Treatment) (Control) (Solution)
Prevents flea eggs from developing into biting [breeding] adults (for) (up to) (1 month) [Quick drying] formula
Dries quickly
Spreads with dog's skin oils
[Brand] works with the biology of your dog [by spreading through the oils of your dog's skin]
Kills fleas for (1 month)
Prevents (and controls) re-infestation(s)
Proactive [pet] protection
Long lasting [formula]
Effective and convenient topical treatment
Easy spot on topical [Brand] [Smart Shield™] applicator
Kills fleas before they have a chance to lay eggs
Triple Active formula contains one adulticide and two insect growth regulators

NON-PESTICIDE RELATED CLAIMS AND OTHER OPTIONAL TEXT

1st/2nd/3rd/(Xth dose)
First/second/third (Xth month)
X-pack/X-tubes
Value pack
X month supply/X monthly treatment(s)
Includes (Brand) (Convenient) (easy to use) [Brand] [Smart Shield™] applicator
Easy (simple) to use (handle) (apply)
[brand] More life in their years

[Brand] [Smart Shield™] Applicator Claims

[Brand] [Smart Shield™] Applicator easily [quickly] gets through dog's fur, for on-skin application
[Brand] [Smart Shield™] Applicator easily [quickly] penetrates dog's fur, for on-skin application
[Brand] [Smart Shield™] Applicator glides [smoothly] through the dog's fur
[Brand] [Smart Shield™] Applicator easily gets through [penetrates] dog's fur to minimize (oily) residue
[Brand] [Smart Shield™] Applicator features rounded edges for on-skin application
[Brand] [Smart Shield™] Applicator features an angled tip to help guide the application
Direct to your dog's skin
You may bathe your dog 48 hours after application
To help remind you when you last applied treatment, simply write in the date when each dose is applied:
Contemporary design
[brand name] [Smart Shield™] [Applicator] helps to prevent getting liquid on [your] hands

[brand name] [Smart Shield™] [Applicator] tip parts hair to help [liquid][application] get down to [the][your][dog's/puppy's] skin
Ergonomically contoured [ergonomic][shape][design] for easy handling [ease of use] [easy use]
For use with [only][brand name][disposable][liquid dispensing] tubes [pods] [vials] [cartridges]
[brand name] [Smart Shield™] [applicator][has][provides][allows for][delivers] better grip
[brand name][provides] re-closable [re-sealable] packaging for [easy] storage
Closing [the][brand name] [Smart Shield™] [applicator] door automatically opens the [disposable][liquid dispensing] tube [pod][vial][cartridge]
[brand name] [Smart Shield™] [Applicator] [will not drip after opening]
[brand name] [Smart Shield™] [Applicator] Won't drip when set down as you go fetch the [your] dog/puppy
Includes unique [brand] [Smart Shield™] applicator
Puts the liquid on your dog/puppy – not your hands
Directs the liquid onto your dog [/puppy] – not your hands
[Brand] [Smart Shield™] [Applicator] provides a [more confident][secure] application
Directs the liquid onto your dog [/puppy] – away from your hands
Applies liquid to your dog's [/puppy's] skin – not yours
[Introducing] [Breakthrough] Convenient, easy to use ACCU-TIP [Brand] [Smart Shield™] [Applicator] [DISPENSER]
[Easy to use] Longer [Brand] [Smart Shield™] applicator tip for easy application to long-haired dogs/puppies
[Brand] [Smart Shield™] Applicator patent pending

Tube claims

New

New [disposable][liquid dispensing] tube [cartridge][vial][pod]
{Note One word "tube", "vial", "cartridge", or "pod" will be selected and used throughout the entire label. Not interchangeably.} [New] [brand name][disposable][liquid dispensing] [tube][vial][pod] tip [helps][to] spread out liquid [on your][dog/puppy]
Unique [cartridge] [tube][vial][pod] with flow control
[no drip][no mess][application][tube][cartridge][vial][pod]

Promotional Package Copy

{The total will not exceed the net contents.}

One month [dose] free

One free month supply [dose] included

Bonus pack

Free [brand] [Smart Shield™] [applicator][tube][vial][cartridge][pod][inside]

Designed not to drip when set on top of the counter, or table, or other flat surface.

For use with [brand] [Smart Shield™] applicator

[Brand][Smart Shield™] Applicator [device] not included

[brand] Refill Pack [brand] [Smart Shield™] [applicator [device] not included]

Free [brand] applicator

Free [brand][Smart Shield] applicator

[\$x] coupons Save [\$x]

[\$X] off

[X%] Off

[\$X] savings

[X] [applicator][tube][vial][cartridge][pod][inside] {"X" will not exceed the net contents.}

Visit [www.adamspetcare.com] [for] [to sign up for] [our newsletter] [special offers] [promotions] [coupons]

[more information][FAQ's] [helpful tips] [product tips] [monthly reminder][program]

Win [a free] [prize] [by entering] [at www.adamspetcare.com] [Visit www.adamspetcare.com] [see official rules] [no purchase necessary]

For official rules visit [www.adamspetcare.com]

Game piece inside

Enter to win

Buy one [product x] get one [product x] free

Buy one [product x] get one [product x] [X%][off]

Buy one [product x] get one [product x] [\$x] [off]

X [%] [more] [months] [supply] [doses] [tubes] [of protection] [free]

Refill Claims

For use [only] with [brand name] [Smart Shield™] [Applicator]
([1][3][4][6] monthly treatments) [1][3][4][6] Months Supply [24][48] doses
Easy to use [convenient] refills
[Can be used with] [Use with] [Brand Name][Smart Shield™] applicator
[Brand Name (e.g., Adams or Bio Spot, Smart Shield)] [Applicator] [Refills][Refill Pack]
[Refill Pack] [for][Brand Name] [Smart Shield™] Applicator
[tube][cartridge][vial][pod] refill pack [refills]
Refills [Refill Pack] available
New [refill][tube][cartridge][vial][pod] design

Applicator name options (applicator device is used in text)

{A single word will be selected from this list and used throughout the entire label.}

Applicator
Tool
Device
Applicator Device
Application Tool

Thermoform name options (tube, cartridge and vial are used in the text)

{A single word will be selected from this list and used throughout the entire label.}

Ampoule
Cartridge
Packet
Pod
Refill
Tube
Vial