

**DIRECTIONS FOR USE**

**FLEAS, TICKS**—Spray freely floors, floor coverings, cracks, bedding, sleeping quarters, and other areas frequented by pets. Repeat as necessary. Do not spray pets.

**CAUTION! HARMFUL IF SWALLOWED, INHALED OR ABSORBED THROUGH THE SKIN.**

Avoid breathing of spray mist. Wash thoroughly with soap and water after handling and before eating or smoking. Do not contaminate utensils, feed, water or foodstuffs. Keep out of the reach of children. If swallowed, induce vomiting immediately and get medical attention. Atropine is antidotal.

Do not remain in treated areas. Ventilate the area after treatment is completed.

**DO NOT SPRAY DIRECTLY ON THE SKIN OR ON ANIMALS.** Remove birds and pets and cover fish bowls and aquaria before spraying room. An average sized room would require 4-6 seconds of spraying.

**WARNING:** Contents under pressure. Do not puncture. Do not use or store near heat or open flame. Exposure to temperatures above 130 Fahrenheit may cause bursting. Never throw container into fire or incinerator.

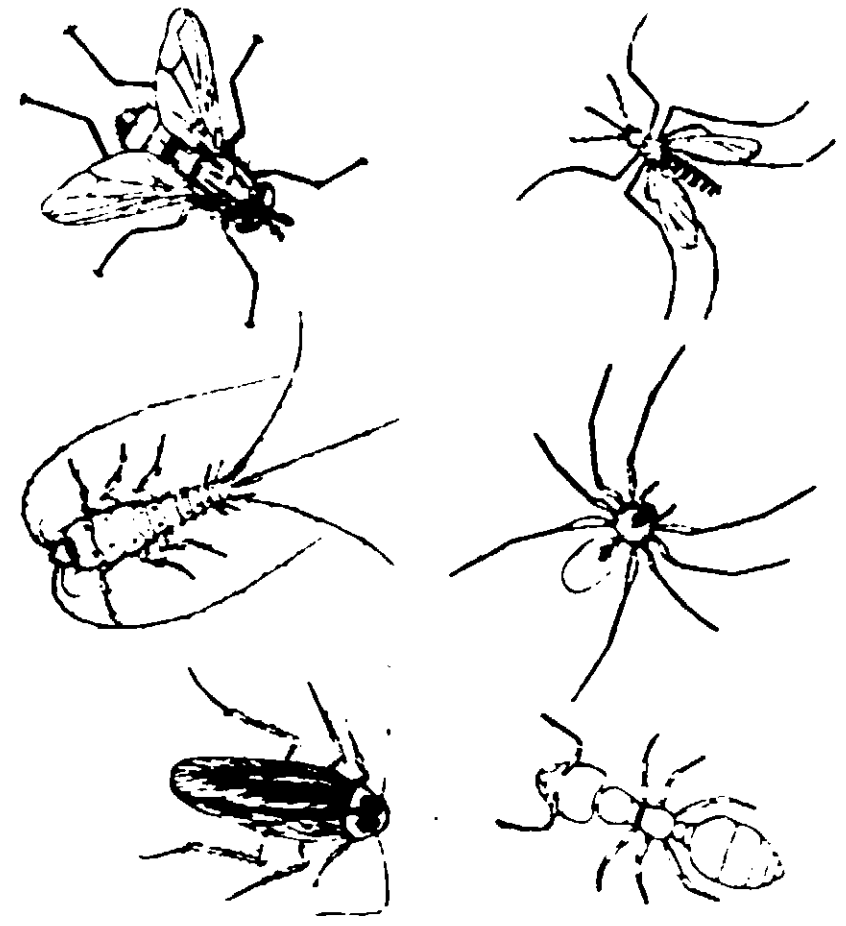
Vapona ® Reg. TM of Shell Chemical Co



E.P.A. Reg. No. 2724-149-AA

ACL-69610-B

**THURON**  
  
**VAPORETTE**  
 AEROSOL ®



**CONTAINS VAPONA®**  
**KILLS INSECTS WITH VAPOR ACTION**

|                                      |          |
|--------------------------------------|----------|
| <b>ACTIVE INGREDIENTS</b>            |          |
| 2,2-Dichlorovinyl dimethyl phosphate | 0.465%   |
| Related compounds                    | 0.035%   |
| Pyrethrins                           | 0.030%   |
| Technical Piperonyl Butoxide*        | 0.060%   |
| N-octyl Bicycloheptene Dicarboximide | 0.102%   |
| Petroleum distillate                 | 14.254%  |
| <b>INERT INGREDIENTS</b>             | 55.052%  |
|                                      | 100.000% |

\*Equivalent to 0.048% butylcarbitol, isopropylperonyl ether and 0.012% related compounds

**WARNING:** Keep Out of Reach of Children  
 See back panel for additional warnings.

A product of Thuron Industries, Inc.  
 Dallas, Texas 75234

Net Weight 20 oz. (1 1/4 lb.) AVDP.

**DIRECTIONS FOR USE**

Use in Homes, Restaurants, Hospitals, Kitchens, Motels, Bakeries, Industrial Plants, Warehouses, and other areas where foods are prepared and processed. Follow instructions for specific pests as listed below, repeating treatments as necessary. Do not use in edible products areas of food processing plants, restaurants or other areas where food is commercially prepared or processed. Do not use in serving areas while food is exposed. Food processing surfaces should be covered or washed before plant operations resume.

**FLIES, MOSQUITOES, GNATS, WASPS**—Spray upwards with a sweeping motion for 4-6 seconds for each 1000 cu. ft. Keep room closed for 15 minutes after treatment.

**ROACHES, WATERBUGS, SILVERFISH, ANTS, SPIDERS, CENTIPEDES, MILLIPEDES, SOW BUGS**—Spray liberally into breeding and hiding places such as cracks around baseboards, cabinets, walls, and woodwork. Thoroughly treat trails, runs, and other places where pests walk, crawl, or are seen. Spray directly on insects when possible. Repeat as necessary.

**CARPET BEETLES, MOTH LARVAE**—Clean and air contaminated materials before treating. Spray directly on pests, repeating treatment as needed. Treat upper and under sides of carpets for carpet beetles. Articles not stored in moth tight containers should be retreated at 30 day intervals.

**BEDBUGS**—Spray cracks and surfaces in baseboards, floors, moulding and other contaminated areas. Take bed apart and treat mattress, springs, frame, and bedding. Air mattress for at least 4 hrs. before re-use.

of children. If swallowed, induce vomiting immediately and get medical attention. Atropine is antidotal.

Do not remain in treated areas. Ventilate the area after treatment is completed.

DO NOT SPRAY DIRECTLY ON THE SKIN OR ON ANIMALS. Remove birds and pets and cover fish bowls and aquaria before spraying room. An average sized room would require 4-6 seconds of spraying.

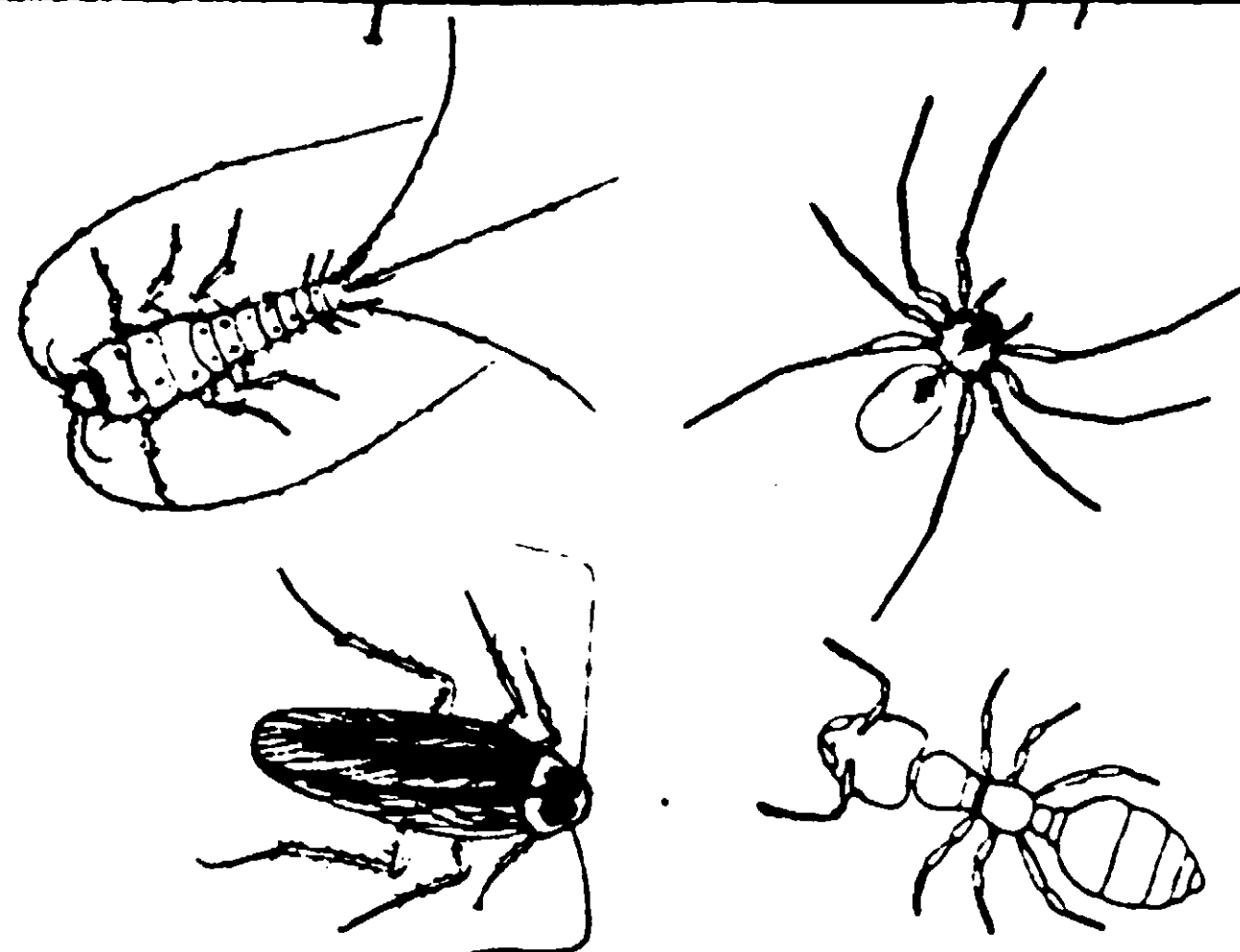
WARNING: Contents under pressure. Do not puncture. Do not use or store near heat or open flame. Exposure to temperatures above 130° Fahrenheit may cause bursting. Never throw container into fire or incinerator.

Vapona © Reg. TM of Shell Chemical Co.



E.P.A. Reg. No. 2724-149-AA

ACL-60610-B



**CONTAINS VAPONA®**  
**KILLS INSECTS WITH VAPOR ACTION**

|  |                |
|--|----------------|
| <b>ACTIVE INGREDIENTS</b>                  |                |
| 2, 2-Dichlorovinyl dimethyl phosphate..... | 0.465%         |
| Related compounds.....                     | 0.035%         |
| Pyrethrins.....                            | 0.030%         |
| Technical Piperonyl Butoxide*.....         | 0.060%         |
| N-octyl Bicycloheptene Dicarboximide.....  | 0.102%         |
| Petroleum distillate.....                  | 14.069%        |
| <b>INERT INGREDIENTS</b> .....             | <b>85.239%</b> |
|  | <b>100.00%</b> |

\*Equivalent to 0.048% (butylcarbityl, (6-propylpiperonyl) ether and 0.012% related compounds

**WARNING: Keep Out of Reach of Children**  
See back panel for additional warnings.

A product of Thuron Industries, Inc.  
Dallas, Texas 75234

Net Weight 20 oz. (1¼ lb.) AVDP.

FLIES, MOSQUITOES, GNATS, WASPS—Spray upwards with a sweeping motion for 4-6 seconds for each 1000 cu. ft. Keep room closed for 15 minutes after treatment.

ROACHES, WATERBUGS, SILVER-FISH, ANTS, SPIDERS, CENTIPEDES, MILLIPEDES, SOW BUGS—Spray liberally into breeding and hiding places such as cracks around baseboards, cabinets, walls, and woodwork. Thoroughly treat trails, runs, and other places where pests walk, crawl, or are seen. Spray directly on insects when possible. Repeat as necessary.

CARPET BEETLES, MOTH LARVAE—Clean and air contaminated materials before treating. Spray directly on pests, repeating treatment as needed. Treat upper and under sides of carpets for carpet beetles. Articles not stored in moth tight containers should be retreated at 30 day intervals.

BEDBUGS—Spray cracks and surfaces in baseboards, floors, moulding and other contaminated areas. Take bed apart and treat mattress, springs, frame, and bedding. Air mattress for at least 4 hrs. before re-use.