

June 19 1961  
 (Under the Federal Insecticide, Fungicide, and Rodenticide Act, the owner is responsible for the pesticide)  
 EPA Reg. No. 2618-2

**USE PRECAUTIONS**

**WARNING: HAZARDOUS TO HUMANS**

May be fatal if inhaled or swallowed. Do not breathe vapors. Avoid contact with skin, eyes, and clothing. Inhalation may cause liver and kidney damage and death. Contact with liquid can cause eye and skin irritation and blistering on long contact.

**RESPIRATORY PROTECTION**

A snug-fitting, full face gas mask must be worn at all times. The gas mask must be equipped with a double size canister approved by Mining Enforcement and Safety Administration and NIOSH for protection against organic vapors and acid gases. Canister usage should be limited to approved time and gas concentration limitations. For gas concentrations exceeding 2% by volume, a gas mask equipped with its own air supply (tank or airline) is needed.

**GENERAL APPLICATION SAFETY**

Use of this product should be made only by trained personnel. Never fumigate alone. Work in pairs. Stand by persons should always remain outside of fumigation area and enter only for emergency aid. Treat grain bins or grain storage buildings only from the outside. Use remote type pump pressure equipment to reach the entire grain surfaces from the outside of the bins or storage buildings. Do not enter treated areas until all toxic gases have been removed.

**TREATED GRAIN**

Do not use for feed or food or ship treated grain until all fumigant gases have been completely removed by thorough aeration.

**FIRE HAZARD RATING**

Classified by Underwriters' Laboratories Inc. as to Fire Hazard Only. Chemi-Fume Premium Grain Fumigant is classed 1 to 5 Less Hazardous than Paraffin Oil with respect to fire hazard. Control Number 991 P.

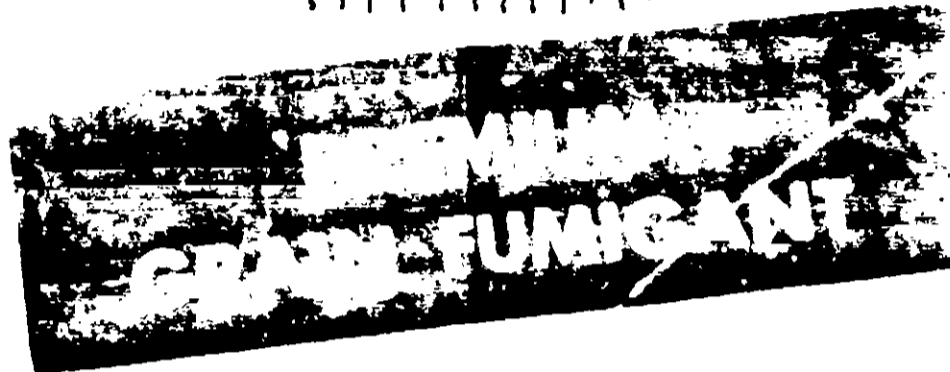
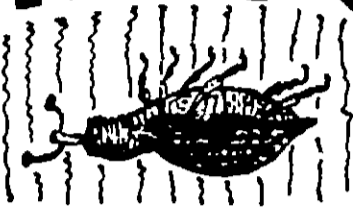
**PRODUCT STORAGE AND DISPOSAL**

Highly volatile. Keep container closed. Store in a cool place out of sunlight. Do not contaminate feed, food, or water by either storage or disposal. Open dumping is prohibited. Consult Federal, State or local authorities for currently approved product disposal procedures.

**EMPTY CONTAINER DISPOSAL**

Triple rinse with water, reseal container and offer for recycling or disposal in a sanitary landfill. Open dumping is prohibited. Consult federal, state or local authorities for currently approved disposal procedures.

# CHEMI-FUME



ACTIVE INGREDIENTS:	WT.
Carbon Tetrachloride	82.4%
Carbon Disulfide	16.2%
Sulfur Dioxide	1.4%
	100.0%

**FOR THE CONTROL OF:** Weevil, Lesser Grain Borer, Indian Meal Moth, Angoumois Grain Moth, Confused Flour Beetle, Mediterranean Flour Moth Larva, Sawtooth Grain Beetle, Black Carpet Beetle.



**POISON DANGER**

*Keep Out of Reach of Children*

**STATEMENT OF PRACTICAL TREATMENT**

**IF SWALLOWED:** Call a doctor. Give victim large quantities of water or milk rapidly and induce vomiting by gagging with a finger placed on the back of victim's tongue. Continue process until vomitus is clear. Never give anything by mouth to an unconscious person.

**IF INHALED:** Move victim at once to fresh air. If breathing has stopped give artificial respiration. Call doctor immediately.

**IF ON CLOTHING OR SHOES:** Remove immediately to avoid skin blisters. Wash clothing before re-use. Remove shoes and do not re-use for at least 24 hours and until free of all fumigant vapors.

**READ SIDE PANEL FOR USE PRECAUTIONS**

Manufactured By

**CHEMI-SOL CHEMICAL AND SALES CO.**  
 2412 EAST FOURTH AVE. HUTCHINSON, KANSAS

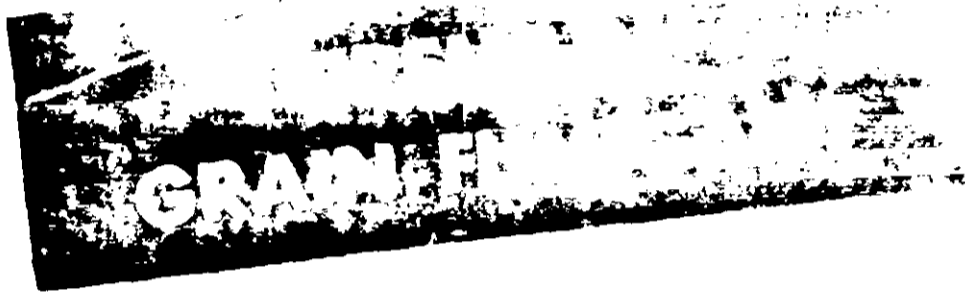
EPA REG. NO. 2618-2

EPA EST. NO. 02618-KS-1122

NET CONTENTS

GALLON

# CHEMI-FUME



**ACTIVE INGREDIENTS:**  
Carbon Tetrachloride 82.4%  
Carbon Disulfide 16.2%  
Sulfur Dioxide 1.4%  
100.0%

**FOR THE CONTROL OF:** Weevil, Lesser Grain Borer, Indian Meal Moth, Angoumois Grain Moth, Confused Flour Beetle, Mediterranean Flour Moth Larva, Sawtooth Grain Beetle, Black Carpet Beetle



**POISON DANGER**

*Keep Out of Reach of Children*

## STATEMENT OF PRACTICAL TREATMENT

**IF SWALLOWED:** Call a doctor. Give victim large quantities of water or milk rapidly and induce vomiting by gagging with a finger placed on the back of victim's tongue. Continue process until vomitus is clear. Never give anything by mouth to an unconscious person.

**IF INHALED:** Move victim at once to fresh air. If breathing has stopped give artificial respiration. Call doctor immediately.

**IF ON CLOTHING OR SHOES:** Remove immediately to avoid skin blisters. Wash clothing before re-use. Remove shoes and do not re-use for at least 24 hours and until free of all fumigant vapors.

READ SIDE PANEL FOR USE PRECAUTIONS

Manufactured By

**CHEMI-SOL CHEMICAL AND SALES CO.**

2412 EAST FOURTH AVE.

HUTCHINSON, KANSAS

EPA REG NO 26182

EPA EST NO U2618-KS-132

NET CONTENTS

GALLON

## APPLICATION AND USAGE

**NOTICE:** It is a violation of federal law to use this product in a manner inconsistent with its labeling.

**For Small Grains, Milo, Wheat, Rye, Oats, Etc.**

Do not enter bins to apply fumigant. Best results are obtained by applying fumigant to the grain stream entering the bin. Do not dump on. Apply in a solid stream slowly so that grain with fumigant will make a complete layer over untreated grain. For bins in which grain will not be turned (farm storage, etc.), apply by pump or other force methods to entire surface of grain. **DO NOT ENTER BINS TO APPLY.**

Figure total bushels for bin, then take 2/3 of the total amount of fumigant required and apply this at 20-ft. intervals, leaving out the last 20-ft. Then apply last 1/3 of fumigant on the last 20-ft. on the grain cone.

Figure total bushels for bin, then take 1/2 of total amount of fumigant required and apply this at 10-ft. intervals, leaving out the last 10-ft. Apply the last 1/2 of the fumigant to the last 10-ft. and on the grain cone.

### 3. TOP APPLICATION (For Bins Not to Be Turned)

Use same amount of fumigant as in layer methods. **DO NOT ENTER BINS TO APPLY.** Apply by pump or other force methods to entire grain surface. Fumigant will penetrate effectively to from 75 to 80 feet.

#### DOSEAGE FOR TIGHT BIN

Usually of Concrete or Steel construction. Use 2 gallons of fumigant for each 1,000 bushels of grain for each application. Use higher dosages for milo and corn.

#### DOSEAGE FOR LOOSELY CONSTRUCTED BINS (Usually Wood)

Use 3 to 6 gallons of fumigant for each 1,000 bushels of grain for each application, depending on tightness of bins.

#### POST-FUMIGATION WARNING SIGNS

All entrances to fumigated bins must be locked and provided with warning signs containing the following: "Area Under Fumigation - Do Not Enter until Completely Aired." Date of fumigation, Name of fumigant, Name, address and telephone number of fumigator. Statement: "Do not remove warning sign until area is completely aired and safe for entry, as indicated by a suitable detector."

**NOTICE TO BUYER:** This product is a fumigant and is intended for use in the control of insects and other pests in grain and other commodities. It is not to be used for any other purpose. It is a violation of federal law to use this product in a manner inconsistent with its labeling. For more information, contact the manufacturer or distributor.