

PRECAUTIONARY STATEMENTS

HAZARDS TO HUMANS & DOMESTIC ANIMALS

Harmful if swallowed. Wash thoroughly after handling and before eating or smoking. Avoid contamination of food and foodstuffs. May be absorbed through the skin. Avoid contact with skin, eyes, and clothing. Harmful if inhaled. Avoid breathing vapor. Remove contaminated clothing and wash before re-use. Remove pets, birds, and cover fish aquariums before spraying. Do not remain in treated areas and ventilate area after treatment is completed. For spot treatment only; do not use as a space spray.

STATEMENT OF PRACTICAL TREATMENT

If swallowed: Call physician or Poison Control center immediately.
If in Eyes: Flush with plenty of water.
If inhaled: Remove victim to fresh air. Apply artificial respiration if indicated.
If on Skin: Wash with plenty of soap and water. Get medical attention if irritation persists.

ENVIRONMENTAL HAZARDS

This product is toxic to fish, birds and other wildlife. Keep away from any body of water. Do not apply when weather conditions favor drift from areas. Do not apply this product only as specified on this label.

This pesticide is highly toxic to bees exposed to direct treatment or to residues remaining on the treated area. Do not apply when bees are actively visiting the crop, cover crop, or weeds blooming in the treated area. Application should be timed to provide the maximum possible interval between treatment and next period of activity.

PHYSICAL OR CHEMICAL HAZARDS

Do not spray near or toward open flames.
Do not use or store near heat or open flame.

STORAGE AND DISPOSAL

STORAGE:
Do not contaminate water, food or feed by storage or disposal.
PESTICIDE DISPOSAL:
Pesticide, spray mixture or rinsate that cannot be used according to label instructions must be disposed of according to Federal, State or local procedures under the Resource Conservation and Recovery Act.

CONTAINER DISPOSAL:

Triple rinse (or equivalent) and offer for recycling or reconditioning, or dispose of in a sanitary landfill or by incineration if permitted by State and local authorities.

SEE RIGHT PANEL FOR DIRECTIONS

BUGSTOP ANT, ROACH and SPIDER KILLER

A Quick Acting Surface Spray for Indoor and Outdoor Use in Home and Institutions
Kills resistant roaches*

Roaches, ants, flies, mosquitoes, fleas (outdoors), waterbugs, wasps, brown dog ticks, silverfish, spiders, crickets, chiggers, small flying moths, and carpet beetles
Cobwebs - Stainless - Kills even resistant roaches, ants, and flies.

Residual Type Insecticide

ACTIVE INGREDIENTS:

*O, O Diethyl O (2-isopropyl 6-methyl 4-pyrimidinyl) phosphorothioate	0.500
Pyrethrins	0.052
**Piperonyl Butoxide, Technical	0.261
Petroleum Distillate	98.608%
	0.579%
	100.000%

INERT INGREDIENTS:

*TRAZITION - Trademark of Liba-Verdy Corp.
**Equivalent to 0.209% (butylcarbityl) (6-propylpiperonyl) ether and 0.052% related compounds

KEEP OUT OF REACH OF CHILDREN CAUTION

See left side panel for additional precautionary statements

Manufactured by: **Michel & Pelton Company**
Emeryville, Calif. 94608

EPA EST 2617-CA-1
EPA REG. No. 2617-40

Lot # (Batch #)

Net Contents

If a violation of Federal law is involved, do not use in edible products where food is commercially prepared or exposed.

TO CONTROL Roaches, Ants, and SERVING AREAS: Facilities where food is prepared or served (such as baseboards, under elements, and treating surfaces likely to be contacted *or foods are exposed.*)

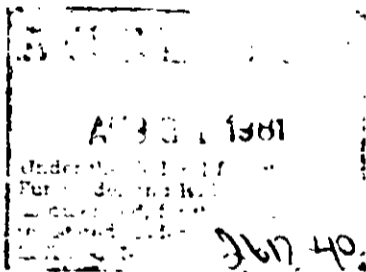
NON FOOD AREAS: Includes closets, and vestibules, offices, lockers, and storage (after canning or bottling) and storage behind and beneath surfaces behind and beneath screens, hide or through which they may pass.

CARPET BETTLES: Spray edge of application to the floor and base areas of shelving. Repeat as necessary.

BROWN DOG TICKS: Thoroughly spray around baseboards, windows and doors as necessary. Fresh bedding should be changed as necessary.

DO NOT TREAT ANIMALS WITH FLEAS, MOSQUITOES, WASPS, etc. Use only as an aid in reducing insects in outdoor areas, spray only. Avoid spraying desirable plants.

FLEAS, CHIGGERS, ANTS OR TICKS: Avoid spraying desirable plants. Applications as infestations warrant.



BUGSTOP ANT, ROACH and SPIDER KILLER

A quick Acting Surface Spray for Indoor and Outdoor Use in Home and Institutions.
Kills resistant roaches!
Roaches, ants, flies, mosquitoes, fleas (outdoors), waterbugs, wasps, brown dog ticks, silverfish, spiders, crickets, chiggers, small flying moths, and Carpet beetles.
Odorless - Stainless - Kills even resistant roaches, ants, and flies.
Residual Type Insecticide

ACTIVE INGREDIENTS:

*O, O Diethyl O-(2 isopropyl 6-methyl 4 pyrimidinyl) phosphorothioate	0.500
Pyrethrin	0.052
**Piperonyl Butoxide, Technical	0.261
Petroleum Distillate	98.608
INERT INGREDIENTS:	0.579
	100.000%

*DIAZINON - Trademark of Ciba Geigy Corp.
**Equivalent to 0.209% (butylcarbityl) (6-propylpiperonyl) ether and 0.052% related compounds.

KEEP OUT OF REACH OF CHILDREN CAUTION

See left side panel for additional precautionary statements.
Manufactured by: **Michel & Pelton Company**
Emeryville, Calif. 94608

EPA EST 2617-CA-1
EPA REG No. 2617-40
Lot # (Batch #)

Net Contents

DIRECTIONS FOR USE

It is a violation of Federal law to use this product in a manner inconsistent with its labeling. Do not use in edible products areas of food processing plants, restaurants or other areas where food is commercially prepared or processed. Do not use in serving areas where food is exposed.

TO CONTROL Roaches, Ants, Waterbugs, Silverfish, Spiders and Crickets:
SERVING AREAS: Facilities where foods are served such as dining rooms, but excluding areas where foods may be prepared or held, apply as a spot treatment to selective surfaces, such as baseboards, under elements of construction and into cracks and crevices. Avoid treating surfaces likely to be contacted by food. (Do not apply when facility is in operation or foods are exposed.)

NON FOOD AREAS: Including garbage rooms, lavatories, floor drains (to sewers), entries and vestibules, offices, locker rooms, machine rooms, boiler rooms, garages, mop closets and storage (after canning or bottling). Apply to baseboard areas, around water pipes, surfaces behind and beneath sinks, lockers, tables, pallets and similar areas where insects hide or through which they may enter. Repeat treatment as required.

CARPET BETTLES: Spray edges of carpeting and under carpeting and rugs. Make localized application to the floor and baseboards. Spray directly into cracks, closets and infested areas of shelving. Repeat as necessary.

BROWN DOG TICKS: Thoroughly spray sleeping quarters of animals. Spray infested areas around baseboards, windows and door frames, wall coverings. Applications should be repeated as necessary. Fresh bedding should be placed in animal quarters following treatment. **DO NOT TREAT ANIMALS WITH FORMULATION.**

FLIES, MOSQUITOES, WASPS AND SMALL FLYING MOTHS OUTDOORS: For outdoor use only as an aid in reducing annoyance from these insects. Spray outside surfaces of screens, doors, window frames or wherever these insects may enter the room. Also treat surfaces around light fixtures on porches, in garages, and other places where these insects alight or congregate.

FLEAS, CHIGGERS, ANTS OUTDOORS: For treatment of localized infestations of these insects in outdoor areas, spray weeds and bushy non crop areas around the home thoroughly. Avoid spraying desirable plants. For ants, thoroughly wet hills and runways. Repeat applications as infestations warrant and as reinfestations occur.