



U.S. ENVIRONMENTAL PROTECTION AGENCY  
Office of Pesticide Programs  
Registration Division (7505P)  
1200 Pennsylvania Ave., N.W.  
Washington, D.C. 20460

EPA Reg. Number:

2596-185

Date of Issuance:

7/28/22

NOTICE OF PESTICIDE:

Registration  
 Reregistration

(under FIFRA, as amended)

Term of Issuance:

Conditional, Time-Limited  
Expires: 8/27/2024

Name of Pesticide Product:

Hartz Reference 153

Name and Address of Registrant (include ZIP Code):

Anna McGrath  
Senior Regulatory Affairs Specialist  
The Hartz Mountain Corporation  
400 Plaza Drive  
Secaucus, New Jersey 07094-3688

Note: Changes in labeling differing in substance from that accepted in connection with this registration must be submitted to and accepted by the Registration Division prior to use of the label in commerce. In any correspondence on this product always refer to the above EPA registration number.

On the basis of information furnished by the registrant, the above named pesticide is hereby registered under the Federal Insecticide, Fungicide and Rodenticide Act.

Registration is in no way to be construed as an endorsement or recommendation of this product by the Agency. In order to protect health and the environment, the Administrator, on his motion, may at any time suspend or cancel the registration of a pesticide in accordance with the Act. The acceptance of any name in connection with the registration of a product under this Act is not to be construed as giving the registrant a right to exclusive use of the name or to its use if it has been covered by others.

This product is conditionally registered in accordance with FIFRA section 3(c)(7)(A). You must comply with the following conditions:

1. Submit and/or cite all data required for registration/reregistration/registration review of your product under FIFRA when the Agency requires all registrants of similar products to submit such data.

Signature of Approving Official:

Elizabeth Fertich, Product Manager 4  
Invertebrate-Vertebrate Branch 1  
Registration Division  
Office of Pesticide Programs

Date:

7/28/22

2. The Agency has found your company to be in compliance with the terms and conditions for the subject product and is extending the two-year registration restriction. This registration is time-limited and expires 8/27/2024.
3. Please note that the product is still subject to all other previously required conditions of registration. Your company is required to adhere to the spot-on label mitigation, and to submit quarterly enhanced incident reports and quarterly sales information as stated in the initial registration notice dated 8/27/2018.
4. Submit one copy of the final printed label for the record before you release the product for shipment.

Should you wish to add/retain a reference to the company's website on your label, then please be aware that the website becomes labeling under the Federal Insecticide Fungicide and Rodenticide Act and is subject to review by the Agency. If the website is false or misleading, the product would be misbranded and unlawful to sell or distribute under FIFRA section 12(a)(1)(E). 40 CFR 156.10(a)(5) list examples of statements EPA may consider false or misleading. In addition, regardless of whether a website is referenced on your product's label, claims made on the website may not substantially differ from those claims approved through the registration process. Therefore, should the Agency find or if it is brought to our attention that a website contains false or misleading statements or claims substantially differing from the EPA approved registration, the website will be referred to the EPA's Office of Enforcement and Compliance.

If you fail to satisfy these data requirements, EPA will consider appropriate regulatory action including, among other things, cancellation under FIFRA section 6(e). Your release for shipment of the product constitutes acceptance of these conditions. A stamped copy of the label is enclosed for your records.

Please note that the record for this product currently contains the following CSFs:

- Basic CSF dated 06/25/2018

If you have any questions, please contact Kaitlin Saunders by phone at 202-566-2890, or via email at [Saunders.Kaitlin@epa.gov](mailto:Saunders.Kaitlin@epa.gov).

Enclosure

{Note to Reviewer: (Text in Parenthesis have information that is not optional) [Text in square brackets have optional information] {Text in stylized brackets have notes to reviewer that are not intended for printing}

## {FRONT PANEL}

**{Note to Reviewer:** The primary brand name will not be used. Only an alternate brand name will be used and it will include the word "dog" in the product's name. In addition, the size of the word "dog" will be increased to at least 75% the height of the largest letter in the product brand name.}

{A large, clear picture of a dog in the weight range for the product}

{Alternate Brand Names listed at end of document}

{One of the following statements will be placed in a box and used prominently on the front panels applicable to the specific size packaging}

[Only For Dogs [&] [Puppies, Toys and Miniatures] weighing 7 – 15 lbs., 6 months of age and older]

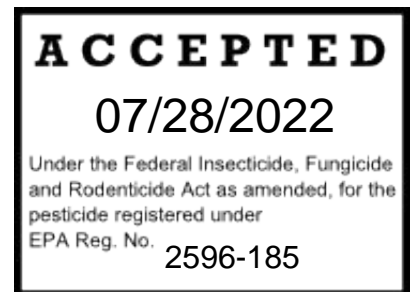
[Only For [Small] Dogs [&] [Puppies] weighing 16 - 30 lbs., 6 months of age and older]

[Only For [Medium] Dogs [& Puppies] Weighing 31-60 lbs., 6 months of age and older]

[Only For [Large] Dogs Weighing over 60 lbs., 6 month of age and older]

### ACTIVE INGREDIENTS

Permethrin.....	45.00%
s-Methoprene .....	3.00%
OTHER INGREDIENTS.....	52.00%
TOTAL.....	100.00%



### KEEP OUT OF REACH OF CHILDREN CAUTION

See Back Panel for First Aid and Additional Precautionary Statements

EPA REGISTRATION No. 2596-185  
EPA ESTABLISHMENT No. 2596-XX-X

The Hartz Mountain Corporation  
400 Plaza Drive  
Secaucus, NJ 07094

### NET CONTENTS

**For Use Only on Dogs and Puppies  
6 months and older weighing:**

7 to 15 lbs.  
16 to 30 lbs.  
31 to 60 lbs.  
Over 60 lbs.

### Net Contents

Contains 1 tube, each 0.022 fl. oz. (0.65 ml)  
Contains 1 tube, each 0.034 fl. oz. (1.0 ml)  
Contains 1 tube, each 0.068 fl. oz. (2.0 ml)  
Contains 1 tube, each 0.101 fl. oz. (3.0 ml)

*{Note to Reviewer: (Text in Parenthesis have information that is not optional) [Text in square brackets have optional information] {Text in stylized brackets have notes to reviewer that are not intended for printing}*

---

**For Use Only on Dogs and Puppies**  
**6 months and older weighing:**

7 to 15 lbs.

**Net Contents**

0.044 fl. oz. (1.3 ml)

Contains 2 tubes each 0.022 fl. oz. ( 0.65 ml)

16 to 30 lbs.

0.068 fl. oz. (2.0 ml)

Contains 2 tubes, each 0.034 fl. oz. (1.0 ml)

31 to 60 lbs.

0.136 fl. oz. (4.0 ml)

Contains 2 tubes, each 0.068 fl. oz. (2.0 ml)

Over 60 lbs.

0.202 fl. oz. (6.0ml)

Contains 2 tubes, each 0.101 fl. oz. (3.0 ml)

**For Use Only on Dogs and Puppies**  
**6 months and older weighing;**

7 to 15 lbs.

**Net Contents**

0.066 fl. oz. (1.95 ml)

Contains 3 tubes, each 0.022 fl. oz. (0.65 ml)

16 to 30 lbs.

0.102 fl. oz. (3.0 ml)

Contains 3 tubes, each 0.034 fl. oz. (1.0 ml)

31 to 60 lbs.

0.204 fl. oz. (6.0 ml)

Contains 3 tubes, each 0.068 fl. oz. (2.0 ml)

Over 60 lbs.

0.303 fl. oz. (9.0 ml)

Contains 3 tubes, each 0.101 fl. oz. (3.0 ml)

**For Use Only on Dogs and Puppies**  
**6 months and older weighing;**

7 to 15 lbs.

**Net Contents**

0.088 fl. oz. (2.6 ml)

Contains 4 tubes, each 0.022 fl. oz. (0.65 ml)

16 to 30 lbs.

0.136 fl. oz. (4.0 ml)

Contains 4 tubes, each 0.034 fl. oz. (1.0 ml)

31 to 60 lbs.

0.272 fl. oz. (8.0 ml)

Contains 4 tubes, each 0.068 fl. oz. (2.0 ml)

Over 60lbs.

0.404 fl. oz. (12.0ml)

Contains 4 tubes each 0.101 fl. oz. (3.0 ml)

*{Note to Reviewer: (Text in Parenthesis have information that is not optional) [Text in square brackets have optional information] {Text in stylized brackets have notes to reviewer that are not intended for printing}*

---

**For Use Only on Dogs and Puppies**  
**6 months and older weighing:**

7 to 15 lbs.

**Net Contents**

0.132 fl. oz. (3.9 ml)  
Contains 6 tubes, each 0.022 fl. oz. (0.65 ml)

16 to 30 lbs.

0.204 fl. oz. (6.0 ml)  
Contains 6 tubes, each 0.034 fl. oz. (1.0 ml)

31 to 60 lbs.

0.408 fl. oz. (12.0 ml)  
Contains 6 tubes, each 0.068 fl. oz. (2.0 ml)

Over 60 lbs.

0.606 fl. oz. (18.0 ml)  
Contains 6 tubes each 0.101 fl. oz. ( 3.0 ml)

**For Use Only on Dogs and Puppies**  
**6 months and older weighing:**

7 to 15 lbs.

**Net Contents**

0.176 fl. oz. (5.2 ml)  
Contains 8 tubes, each 0.022 fl. oz. (0.65 ml)

16 to 30 lbs.

0.272 fl. oz. (8.0 ml)  
Contains 8 tubes, each 0.034 fl. oz. (1.0 ml)

31 to 60 lbs.

0.544 fl. oz. (16.0 ml)  
Contains 8 tubes, each 0.068 fl. oz. (2.0 ml)

Over 60 lbs.

0.808 fl. oz. (24.0 ml)  
Contains 8 tubes each 0.101 fl. oz. (3.0 ml)

**For Use Only on Dogs and Puppies**  
**6 months and older weighing:**

7 to 15 lbs.

**Net Contents**

0.264 fl. oz. (7.8 ml)  
Contains 12 tubes, each 0.022 fl. oz. (0.65 ml)

16 to 30 lbs.

0.408 fl. oz. (12.0 ml)  
Contains 12 tubes, each 0.034 fl. oz. (1.0 ml)

31 to 60 lbs.

0.816 fl. oz. (24.0ml)  
Contains 12 tubes, each 0.068 fl. oz. (2.0 ml)

Over 60 lbs.

1.212 fl. oz. (36.0 ml)  
Contains 12 tubes each 0.101fl. oz. (3.0 ml)

*{Note to Reviewer: (Text in Parenthesis have information that is not optional) [Text in square brackets have optional information] {Text in stylized brackets have notes to reviewer that are not intended for printing}*

---

*{Cat Warning Icon: A 1.5 cm x 1.5 cm prohibition icon in a box, black image on yellow background, will appear on the lower right hand corner of the front panel.}*



**DO NOT USE ON CATS.**

## **{BACK PANEL}**

### **READ ENTIRE LABEL BEFORE EACH USE**

**USE ONLY ON DOGS AND PUPPIES 6 MONTHS OF AGE AND OLDER WEIGHING [7 TO 15 LBS] [16 TO 30 LBS]  
[31 TO 60 LBS] [OVER 60 LBS]  
DO NOT USE ON CATS**

### **PRECAUTIONARY STATEMENT**

**HAZARD TO HUMANS & DOMESTIC ANIMALS**

**CAUTION**

**HAZARD TO HUMANS.** Harmful if absorbed through skin. Avoid contact with skin, eyes or clothing. Wash thoroughly with soap and water after handling and before eating, drinking, chewing gum, using tobacco or using the toilet. Remove contaminated clothing and wash clothing before reuse.

**HAZARD TO DOMESTIC ANIMALS.** FOR EXTERNAL USE ON DOGS ONLY. Do not use on dogs or puppies less than 6 months old, weighing less than [7 lbs.] [16 lbs.][31 lbs.][60 lbs.]. Consult a veterinarian before using this product on debilitated, aged, medicated, pregnant or nursing dogs. Sensitivities may occur after using ANY pesticide product for dogs. If signs of sensitivity occur, bathe your dog/puppy with a mild soap and rinse with large amounts of water. If signs continue consult a veterinarian IMMEDIATELY. In the event of an emergency, contact xxx-xxx-xxxx. Keep cats away from treated dogs/puppies for 24 hours. If applied to a cat or ingested by a cat, contact your veterinarian.

*{Note to Reviewer: (Text in Parenthesis have information that is not optional) [Text in square brackets have optional information] {Text in stylized brackets have notes to reviewer that are not intended for printing}*

---

## **{BACK PANEL - continued}**

*{A box labeled "Side Effects" will be immediately above the cat warning box on the back panel.}*

**Side Effects:** Monitor your dog after application. Side effects may include signs of skin irritation such as redness, scratching or other signs of discomfort. Gastrointestinal signs such as vomiting or diarrhea have also been reported. If these or other signs occur, consult your veterinarian or call 1-xxx-xxx-xxxx.

*{Cat Prohibition Icon: A 1.5cm x 1.5cm cat prohibition icon and warning text in a box will be in the lower right hand corner of the back panel in yellow with black images and text.}*



**DO NOT USE ON CATS – MAY BE FATAL.**

**Keep cats away from treated dogs for 24 hours. If applied to a cat or ingested by a cat, contact your veterinarian immediately.**

### **FIRST AID**

#### **IF ON SKIN OR CLOTHING**

Take off contaminated clothing. Rinse skin immediately with plenty of water for 15-20 minutes.

Call a poison control center or doctor for treatment advice. Have the product container or label with you, when calling a poison control center, doctor or veterinarian or going for treatment. For additional information on this pesticide product (including health concerns, medical emergencies or pesticide incidents), you may call x-xxx-xxx-xxxx, twenty-four (24) hours a day, seven (7) days a week.

### **PHYSICAL OR CHEMICAL HAZARDS**

Combustible. Do not use or store near heat or open flame.

**DIRECTIONS FOR USE.** It is a violation of Federal Law to use this product in a manner inconsistent with its labeling.

**USE RESTRICTIONS:** *{Only one time frame, months or days, will be used throughout the label.}*

- DO NOT APPLY TO DOGS/PUPPIES LESS THAN 6 MONTHS OF AGE AND WEIGHING LESS THAN [7lbs.] [16lbs.][31lbs.] [60lbs.]

*{Note to Reviewer: (Text in Parenthesis have information that is not optional) [Text in square brackets have optional information] {Text in stylized brackets have notes to reviewer that are not intended for printing}*

---

- DO NOT USE MORE THAN ONE TUBE PER DOG/PUPPY REGARDLESS OF THE DOG'S WEIGHT AND DO NOT RETREAT MORE THAN [ONCE PER MONTH]
- DO NOT ALLOW DOG/PUPPY TO INGEST PRODUCT
- DO NOT GET THIS PRODUCT IN DOG'S/PUPPY'S EYES OR MOUTH
- DO NOT HAVE CONTACT OR ALLOW CHILDREN TO HAVE CONTACT WITH TREATED AREA UNTIL COMPLETELY DRY
- DO NOT ALLOW CHILDREN TO APPLY PRODUCT
- APPLICATION OF PRODUCT ON DOG/PUPPY MUST ONLY BE DONE INDOORS
- DO NOT USE ON CATS OR ANIMALS OTHER THAN DOGS
- DO NOT BATHE OR ALLOW YOUR DOG TO SWIM FOR 24 HOURS AFTER APPLICATION

{Option 1}

Dog must be dry and standing at time of application. Remove one [applicator tube] [tube] from the package and hold in an upright position pointed away from face. Pull off cap. Turn the cap around and place on top of [applicator tube][tube]. Simply press cap down to break the seal of the [applicator tube][tube]. Remove cap carefully. Position the tip of the [applicator tube] [tube] on the dog's back between the shoulder blades. Use the tip of the [applicator tube] [tube] to part the dog's hair so that product will be applied to the skin level. Begin squeezing out the contents of the [applicator tube] [tube] to form a stripe as you move from the shoulder blades along the dog's back to the base of tail. Repeat every [month] [30 days]. Separate treated dog from other dogs, cats and pets for 24 hours after treatment has been applied.

{Option 2}

Dog must be dry and standing at time of application. Remove one [applicator tube][tube] from package and hold in an upright position pointed away from face. Twist dispensing tip clockwise about ½ turn while pushing down to break [applicator's][tube's] seal. Do not remove the dispensing tip. Position the dispensing tip on the dog's back between the shoulder blades. Use the dispensing tip of the [applicator tube] [tube] to part the dog's hair so that the product will be applied at the skin level. Begin squeezing out the contents of the [applicator tube] [ tube] to form a stripe as you move from the shoulder blades along the dog's back to the base of tail. Repeat every [month] [30 days]. Separate treated dog from other dogs, cats, and pets for 24 hours after treatment has been applied.

{Option 3}

Dog must be dry and standing at time of application. Remove one [applicator tube] [tube] from the package and hold in an upright position pointed away from face. Pull off cap. Turn the cap around and place on top of [applicator tube][ tube]. Simply press cap down to break the seal of the [applicator tube][ tube]. Remove cap carefully. Position the tip of the tube on the dog's back at the base of the dog's tail. Use the tip of the [applicator tube] [tube] to part the dog's hair so that product will be applied to the skin level. Begin squeezing out the contents of the [applicator tube] [tube] to form a stripe as you move from the base of tail along the dog's back to the shoulder blades. Repeat every [month] [30 days]. Separate treated dog from other dogs, cats, and pets for 24 hours after treatment has been applied.

{Option 4}

Dog must be dry and standing at time of application. Remove one [applicator tube] [tube] from the package and hold in an upright position pointed away from face. Twist dispensing tip clockwise about ½ turn while pushing down to break the [applicator's][tube's] seal. Do not remove dispensing tip. Position the dispensing tip at the base of the tail.



{Note to Reviewer: (Text in Parenthesis have information that is not optional) [Text in square brackets have optional information] {Text in stylized brackets have notes to reviewer that are not intended for printing}

---

Use the dispensing tip of the [applicator tube] [tube] to part the dog's hair so that the product will be applied at the skin level. Begin squeezing out the contents of the [applicator tube] [tube] to form a stripe as you move from the base of tail along the dog's back to the shoulder blades. Repeat every [month] [30 days]. Separate treated dog from other dogs, cats, and pets for 24 hours after treatment has been applied.

{Option 5}

Dog must be dry and standing at time of application. Remove one [applicator tube] [tube] from the package and hold in an upright position with the neck of the tube pointed away from face. Lift the applicator handle (lever) in an upward motion to separate (from the body of the tube). Position the tip of the tube on the dog's back between the shoulder blades. Use the tip of the tube to part the dog's hair so that the product will be applied at skin level. Begin squeezing out the contents of the tube to form a stripe as you move from the shoulder blades along the dog's back to the base of the tail. Repeat every [month] [30 days]. Separate treated dog from other dogs, cats, and pets for 24 hours after treatment has been applied.

{Option 6}

Dog must be dry and standing at time of application. Remove one [applicator tube] [tube] from the package and hold in an upright position with the neck of the tube pointed away from face. Lift the applicator handle (lever) in an upward motion to separate (from the body of the tube). Position the tip of the tube on the dog's back at the base of the dog's tail. Use the tip of the tube to part the dog's hair so that the product will be applied at skin level. Begin squeezing out the contents of the tube to form a stripe as you move from the base of the tail along the dog's back to the shoulder blades. Repeat every [month] [30 days]. Separate treated dog from other dogs, cats, and pets for 24 hours after treatment has been applied.

## STORAGE AND DISPOSAL

Do not contaminate water, food or feed by storage or disposal.

**PESTICIDE STORAGE:** Keep this product in its tightly closed original container, when not in use. Store in a cool, dry (preferably locked) area that is inaccessible to children and animals.

**PESTICIDE DISPOSAL:** Do not pour or dispose down the drain or sewer. Call your local solid waste agency for local disposal options.



**CONTAINER HANDLING:** Non-refillable container. Do not reuse or refill container. *If empty:* Offer for recycling if available. *If partly filled:* Call your local solid waste agency for disposal instructions. Never place unused product down any indoor or outdoor drain.

*{Note to Reviewer: (Text in Parenthesis have information that is not optional) [Text in square brackets have optional information] {Text in stylized brackets have notes to reviewer that are not intended for printing}*

---

***{Text for Tube/Applicator}***

{Product Name}

[For Dogs [&] [Puppies, Toys and Miniatures] weighing 7 – 15 lbs., over 6 months of age and older]

[For [Small] Dogs [&] [Puppies] weighing 16 - 30 lbs., over 6 months of age and older]

[For [Medium] Dogs [& Puppies ] weighing 31-60 lbs., over 6 months of age and older]

[For [Large] Dogs Weighing over 60 lbs., over 6 month of age and older]

Permethrin 45.0%, s-Methoprene 3.0%

KEEP OUT OF REACH OF CHILDREN

CAUTION

EPA Reg. No. 2596-185

Net Contents:

*{Lot number to appear on tube crimp}*

*{A cat prohibition icon in a box will appear on the applicator tube and/or the immediate container for the applicator tube itself.}*



**DO NOT USE ON CATS**

***{OPTIONAL/ALTERNATE LABEL TEXT}***

- Flea and Tick Treatment
- Topical Flea and Tick Treatment only for Dogs and puppies six months and older weighing [7-15lbs.][16-30lbs][31-60lbs] [over 60 lbs.]
- Repels Fleas, Ticks for up to [30 days][one month]
- Kills and Repels Fleas, Flea larvae and ticks for up to [30 days][one month]
- Kills flea eggs
- Kills fleas before they lay eggs
- Kills [and][repels] fleas, flea larvae and ticks for up to [30 days][one month]
- Kills Brown Dog ticks for up to [30 days][one month]
- Kills [fleas] [and][ticks] [by][through] contact
- Protects dogs against fleas and ticks
- Contains insect growth regulator to kill flea eggs
- Contains insect growth regulator to prevent re-infestation of fleas on your dog

*{Note to Reviewer: (Text in Parenthesis have information that is not optional) [Text in square brackets have optional information] {Text in stylized brackets have notes to reviewer that are not intended for printing}*

---

- Prevents flea eggs from developing into biting adults for up to [30 days][one month]
- Prevents flea re-infestation on your dog
- Protects dogs against fleas and ticks
- Kills fleas and ticks [by] [through] contact
- Repels [and kills] ticks for up to [30 days][one month]
- Kills flea eggs and flea larvae to help prevent infestation on your dog
- Contains an insect growth regulator
- Controls [ fleas] [ticks]for up to [30 days][one month]
- Once a month flea and tick prevention
- Monthly Flea, Tick [application] treatment
- Easy and Convenient to use
- Quick drying formula
- Once a month flea and tick treatment
- Lasts [30 days] [one month]
- Easy open tip
- Convenient, easy open tip
- Protection for dogs
- X-PACK {X=1,2,3,4,6,8, 12}
- X –tubes {X=1,2,3,4,6,8, 12}
- X MONTHLY SUPPLY {X=1,2,3,4,6,8, 12}
- X TREATMENTS {X=1,2,3,4,6,8, 12}
- Club pack {A Club pack is 2, 3,4 , 6 or 8 packs shrink wrapped so that both the front and back panels of the label are readable. The number in the pack will not exceed the Net Content.}
- Bonus pack {A Bonus pack is an additional one or two doses, e.g. a 3 pack would become a 4 pack and a 6 pack would become an 8 pack. The number in the pack will not exceed the Net Content.}
- [1][2] Month(s) Free {Any 'free' applications will be included in the Net Contents of the carton.}
- [1][2] applicator tubes free {Any 'free' applications will be included in the Net Contents of the carton.}
- [30][60] day(s) free {Any 'free' applications will be included in the Net Contents of the carton.}
- [30][60] days of treatment – FREE {Any 'free' applications will be included in the Net Contents of the carton.}
- Save Now
- Great value
- Better value
- Fragrance free
- Unscented
- Pro-cision Flo Applicator
- Pro-Glide Applicator
- [Featuring the angled] Pro-Glide Applicator
- Applicator easily gets through dog's fur, for application to skin
- Direct to your dog's skin
- From the brand with [over] 90 years of experience
- Hartz, the brand with [over] 90 years of experience

*{Note to Reviewer: (Text in Parenthesis have information that is not optional) [Text in square brackets have optional information] {Text in stylized brackets have notes to reviewer that are not intended for printing}*

---

- Hartz, the trusted brand [used by your parents and grandparents] with [over] 90 years of experience
- From the company with over 90 years [of] experience caring for pets
- From the company with over 90 years [of] experience devoted to pets
- From the company with over 90 years [of] experience dedicated to pets
- From the company with over 90 years of commitment to pets
- Hartz, the company with over 90 years [of] experience caring for pets
- Hartz, the company with over 90 years of experience
- Caring for Pets for over 90 years
- Serving Pets for over 90 years
- Helping Pets for over 90 years

***{Reminder calendar stickers}***

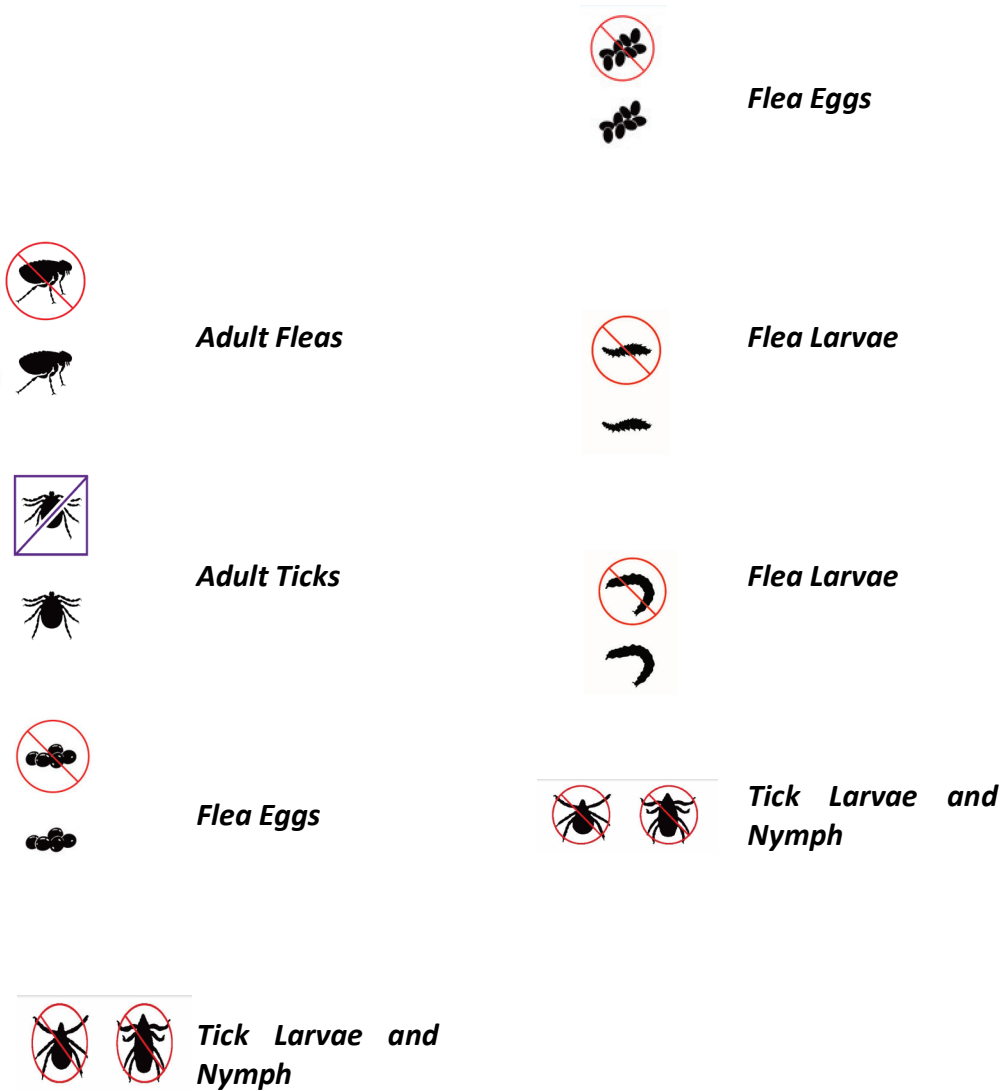
To help remind you when [you last applied] [and][ need to apply], simply place stickers on calendar.

- First Dose
- Second Dose
- Third Dose
- Fourth Dose
- Fifth Dose
- Sixth Dose
- Seventh Dose
- Eighth Dose
- Ninth Dose
- Tenth Dose
- Eleventh Dose
- Twelfth Dose

{Note to Reviewer: (Text in Parenthesis have information that is not optional) [Text in square brackets have optional information] {Text in stylized brackets have notes to reviewer that are not intended for printing}

---

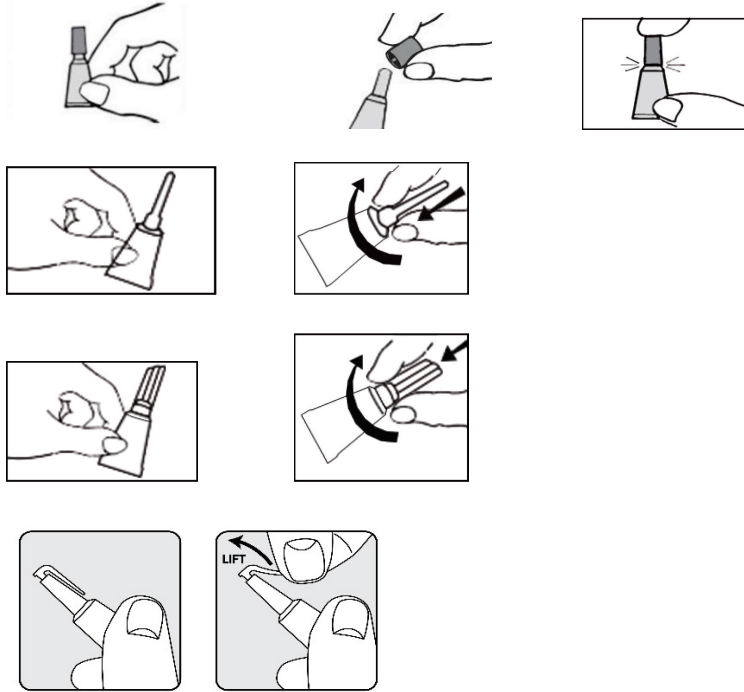
**{Optional Marketing Icons}**



{Note to Reviewer: (Text in Parenthesis have information that is not optional) [Text in square brackets have optional information] {Text in stylized brackets have notes to reviewer that are not intended for printing}

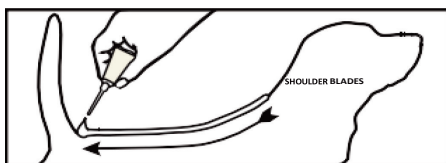
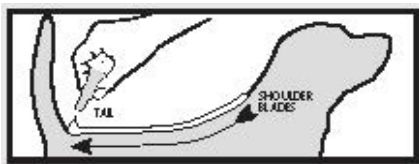
---

**{Illustrations for Opening Tube/Applicator}**



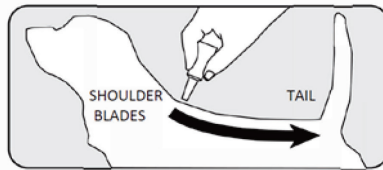
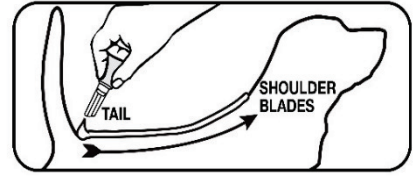
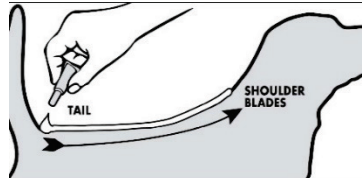
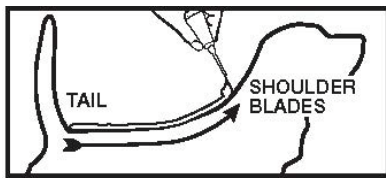
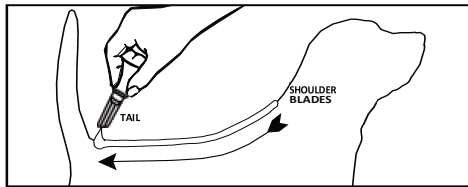
**{Illustrations for applying product to dog}**

{Note to Reviewer: All images showing the direction of the product application from shoulder blades to the base of the tail will only apply to Directions for Use Options 1, 2, or 5. All images showing the direction of the product application from the base of the tail to the shoulder blades will only apply to Directions for Use Options 3, 4, or 6.



{Note to Reviewer: (Text in Parenthesis have information that is not optional) [Text in square brackets have optional information] {Text in stylized brackets have notes to reviewer that are not intended for printing}

---



**{Alternate Brand Names}**

Hartz Advanced Dual Action Flea & Tick Topical for Dogs & Puppies  
Hartz Dual Action for Dogs and Puppies

Hartz Dual Action Flea and Tick Topical Drops for Dogs & Puppies  
Hartz UltraGuard Dual Action Flea & Tick Topical for Dogs & Puppies  
Hartz UltraGuard Dual Acton for Dogs and Puppies  
Hartz UltraGuard Dual Action Topical for Dogs & Puppies

Hartz UltraGuard Plus Dual Action Flea & Tick Topical for Dogs & Puppies  
Hartz UltraGuard Plus Dual Active Flea 7 Tick Drops for Dogs  
Hartz UltraGuard Plus Dual Active Flea & Tick Drops for Dogs & Puppies  
Hartz UltraGuard Plus Dual Active Flea & Tick Drops for Dogs and Puppies

Hartz UltraGuard Plus Topical Flea and Tick Prevention for Dogs  
Hartz UltraGuard Plus Topical Flea and Tick Prevention for Dogs and Puppies  
Hartz UltraGuard Plus Topical Flea and Tick Prevention for Dogs & Puppies

Hartz UltraGuard Plus Topical Flea and Tick Treatment for Dogs  
Hartz UltraGuard Plus Topical Flea and Tick Treatment for Dogs and Puppies  
Hartz UltraGuard Plus Topical Flea and Tick Treatment for Dogs & Puppies

*{Note to Reviewer: (Text in Parenthesis have information that is not optional) [Text in square brackets have optional information] {Text in stylized brackets have notes to reviewer that are not intended for printing}*

---

Hartz UltraGuard Plus Topical Flea and Tick Control for Dogs  
Hartz UltraGuard Plus Topical Flea and Tick Control for Dogs and Puppies  
Hartz UltraGuard Plus Topical Flea and Tick Control for Dogs & Puppies

Hartz UltraGuard Plus Topical Flea and Tick Solution for Dogs & Puppies  
Hartz UltraGuard Plus Topical Flea and Tick Solution for Dogs and Puppies

Hartz InControl Topical Flea and Tick Treatment for Dogs  
Hartz InControl Topical Flea and Tick Treatment for Dogs & Puppies  
Hartz InControl Topical Flea & Tick Prevention for Dogs  
Hartz InControl Topical Flea & Tick Prevention for Dogs & Puppies

Hartz InControl Flea & Tick for Dogs  
Hartz InControl Flea & Tick for Dogs & Puppies

Hartz InControl Flea & Tick Treatment for Dogs  
Hartz InControl Flea & Tick Treatment for Dogs & Puppies