



U.S. ENVIRONMENTAL PROTECTION AGENCY

Office of Pesticide Programs
Registration Division (7505P)
1200 Pennsylvania Ave., N.W.
Washington, D.C. 20460

EPA Reg. Number:

2596-182

Date of Issuance:

5/21/25

NOTICE OF PESTICIDE:

☒ Registration
☐ Reregistration

(under FIFRA, as amended)

Term of Issuance:

Conditional, Time-Limited
Expires: 05/22/2027

Name of Pesticide Product:

Hartz Reference #147

Name and Address of Registrant (include ZIP Code):

Joe Conti
Senior Director, Regulatory, Research & Development
The Hartz Mountain Corporation
jconti@hartz.com
CC amcgrath@hartz.com

Note: Changes in labeling differing in substance from that accepted in connection with this registration must be submitted to and accepted by the Registration Division prior to use of the label in commerce. In any correspondence on this product always refer to the above EPA registration number.

On the basis of information furnished by the registrant, the above named pesticide is hereby registered under the Federal Insecticide, Fungicide and Rodenticide Act.

Registration is in no way to be construed as an endorsement or recommendation of this product by the Agency. In order to protect health and the environment, the Administrator, on his motion, may at any time suspend or cancel the registration of a pesticide in accordance with the Act. The acceptance of any name in connection with the registration of a product under this Act is not to be construed as giving the registrant a right to exclusive use of the name or to its use if it has been covered by others.

This product is conditionally registered in accordance with FIFRA section 3(c)(7)(A). You must comply with the following conditions:

1. Submit and/or cite all data required for registration/reregistration/registration review of your product under FIFRA when the Agency requires all registrants of similar products to submit such data.

Signature of Approving Official:

Ralph Narain

Ralph Narain, Acting Product Manager 01
Invertebrate and Vertebrate Branch 3
Registration Division

Date:

5/21/25

2. The Agency has found your company to be in compliance with the terms and conditions for the subject product and is extending the two-year registration restriction. This registration is time-limited and expires 05/22/2027.
3. Please note that the product is still subject to all other previously required conditions of registration. Your company is required to adhere to the spot-on label mitigation, and to submit quarterly enhanced incident reports and quarterly sales information as stated in an Agency letter dated 10/23/2014.
4. Submit one copy of the final printed label for the record before you release the product for shipment.

Should you wish to add/retain a reference to the company's website on your label, then please be aware that the website becomes labeling under the Federal Insecticide Fungicide and Rodenticide Act and is subject to review by the Agency. If the website is false or misleading, the product would be misbranded and unlawful to sell or distribute under FIFRA section 12(a)(1)(E). 40 CFR 156.10(a)(5) list examples of statements EPA may consider false or misleading. In addition, regardless of whether a website is referenced on your product's label, claims made on the website may not substantially differ from those claims approved through the registration process. Therefore, should the Agency find or if it is brought to our attention that a website contains false or misleading statements or claims substantially differing from the EPA approved registration, the website will be referred to the EPA's Office of Enforcement and Compliance.

If you fail to satisfy these terms and conditions, EPA will consider appropriate regulatory action including, among other things, cancellation under FIFRA section 6(e). Your release for shipment of the product constitutes acceptance of these conditions. A stamped copy of the label is enclosed for your records.

Please note that the record for this product currently contains the following CSFs:

- Basic CSF dated 08/28/2014

If you have any questions, please contact Loren LaPointe via email at LaPointe.Loren@epa.gov.

Enclosure: stamped label

May 8, 2025

{FRONT PANEL}

Hartz® Reference # 147 for Dogs

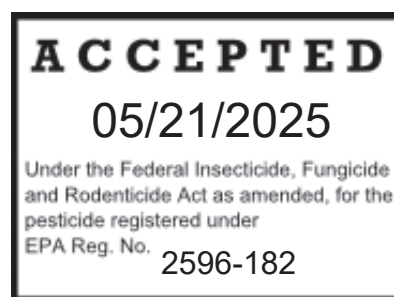
{Market Label – the word ‘Dogs’ is included in each product name and will be at least 75% in height of the largest letter in the product name. A large clear picture of a dog in the weight range of the product as packaged will appear on the front panel.}

{Only one of the following statements will appear on appropriate weight band/breed market label prominently on front panel, enclosed in a box, as required per Agency's pet spot-on mitigations measures.}

For use ONLY on Dogs [and Puppies] 7 weeks and older weighing 3 - 10 lbs.
or weighing 11 - 20 lbs.
or weighing 21 - 55 lbs.
or weighing over 55 lbs.

ACTIVE INGREDIENTS:

Imidacloprid9.10%
Pyriproxyfen0.46%
Other Ingredients.90.44%
Total100.00%



KEEP OUT OF REACH OF CHILDREN

CAUTION: See back panel for First Aid, Precautionary Statements and Directions for Use.
{Large clear picture of dog in appropriate breed/weight class on front panel of product to be included see graphics beginning on page 20.}

NET CONTENTS:

{1 Tube}

For use ONLY on Dogs and Puppies 7 weeks and older Weighing:	Net Contents (Each tube)
3 to 10 lbs.	Contains 1 tube, each 0.013 fl. oz. (0.40 ml.)
11 to 20 lbs.	Contains 1 tube, each 0.034 fl. oz. (1.00 ml.)
21 to 55 lbs.	Contains 1 tube, each 0.084 fl. oz. (2.50 ml.)
55 lbs. and Over	Contains 1 tube, each 0.135 fl. oz. (4.00 ml.)

{FRONT PANEL continued}

NET CONTENTS {continued}

{2 Pack}

For use ONLY on Dogs and Puppies 7 weeks and older Weighing:	Net Contents (Each tube)
3 to 10 lbs.	0.026 fl. oz. (0.8 ml.), Contains 2 tubes, each 0.013 fl. oz. (0.40 ml.)
11 to 20 lbs.	0.68 fl. oz. (2.00 ml.), Contains 2 tubes, each 0.034 fl. oz. (1.00 ml.)
21 to 55 lbs.	0.168 fl. oz. (5.00 ml.), Contains 2 tubes, each 0.084 fl. oz. (2.50 ml.)
55 lbs. and Over	0.27 fl. oz. (8.00 ml.), Contains 2 tubes, each 0.135 fl. oz. (4.00 ml.)

{3 Pack}

For use ONLY on Dogs and Puppies 7 weeks and older Weighing:	Net Contents (Each tube)
3 to 10 lbs.	0.039 fl. oz. (1.20 ml.), Contains 3 tubes, each 0.013 fl. oz. (0.40 ml.)
11 to 20 lbs.	0.102 fl. oz. (3.00 ml.), Contains 3 tubes, each 0.034 fl. oz. (1.00 ml.)
21 to 55 lbs.	0.252 fl. oz. (7.5 ml.), Contains 3 tubes, each 0.084 fl. oz. (2.50 ml.)
55 lbs. and Over	0.405 fl. oz. (12.00 ml.), Contains 3 tubes, each 0.135 fl. oz. (4.00 ml.)

{4 Pack}

For use ONLY on Dogs and Puppies 7 weeks and older Weighing:	Net Contents (Each tube)
3 to 10 lbs.	0.052 fl. oz. (1.60 ml.), Contains 4 tubes, each 0.013 fl. oz. (0.40 ml.)
11 to 20 lbs.	0.136 fl. oz. (4.00 ml.), Contains 4 tubes, each 0.034 fl. oz. (1.00 ml.)
21 to 55 lbs.	0.336 fl. oz. (10.00 ml.), Contains 4 tubes, each 0.084 fl. oz. (2.50 ml.)
55 lbs. and Over	0.540 fl. oz. (16.00 ml.), Contains 4 tubes, each 0.135 fl. oz. (4.00 ml.)

{FRONT PANEL continued}

NET CONTENTS {continued}

{6 Pack}

For use ONLY on Dogs and Puppies 7 weeks and older Weighing:	Net Contents (Each tube)
3 to 10 lbs.	0.078 fl. oz. (2.40 ml.), Contains 6 tubes, each 0.013 fl. oz. (0.40 ml.)
11 to 20 lbs.	0.204 fl. oz. (4.00 ml.), Contains 6 tubes, each 0.034 fl. oz. (1.00 ml.)
21 to 55 lbs.	0.504 fl. oz. (15.00 ml.), Contains 6 tubes, each 0.084 fl. oz. (2.50 ml.)
55 lbs. and Over	0.810 fl. oz. (24.00 ml.), Contains 6 tubes, each 0.135 fl. oz. (4.00 ml.)

{8 Pack}

For use ONLY on Dogs and Puppies 7 weeks and older Weighing:	Net Contents (Each tube)
3 to 10 lbs.	0.104 fl. oz. (3.2 ml.), Contains 8 tubes, each 0.013 fl. oz. (0.40 ml.)
11 to 20 lbs.	0.272 fl. oz. (8.00 ml.), Contains 8 tubes, each 0.034 fl. oz. (1.00 ml.)
21 to 55 lbs.	0.672 fl. oz. (20.00 ml.), Contains 8 tubes, each 0.084 fl. oz. (2.50 ml.)
55 lbs. and Over	1.08 fl. oz. (32.00 ml.), Contains 8 tubes, each 0.135 fl. oz. (4.00 ml.)



DO NOT USE ON CATS {Icon size is 1.5 cm x1.5cm, black on yellow background located in the lower right corner of the package}"

{BACK PANEL}

FIRST AID

IF SWALLOWED:

Call a poison control center or doctor immediately for treatment advice. Have person sip a glass of water if able to swallow. Do not induce vomiting unless told to do so by a poison control center or doctor. Do not give anything by mouth to an unconscious person.

IF IN EYES:

Hold eye open and rinse slowly and gently with water for 15-20 minutes. Remove contact lenses, if present, after the first 5 minutes, then continue rinsing eye. Call a poison control center or doctor for treatment advice.

IF ON SKIN OR CLOTHING:

Take off contaminated clothing. Rinse skin immediately with plenty of water for 15 – 20 minutes. Call a poison control center or doctor for treatment or advice.

HOTLINE NUMBER

Have the product container or label with you when calling a poison control center or doctor, or going for treatment. For medical emergencies or consumer questions call 1-800-275-1414 {or insert alternate number of supplemental distributor hotline, if applicable.}

Note to Physician: Treat the patient symptomatically.

{BACK PANEL -- continued}

PRECAUTIONARY STATEMENTS

HAZARDS TO HUMANS

CAUTION:

Harmful if swallowed. Causes moderate eye irritation. Avoid contact with eyes or clothing. Wash hands thoroughly with soap and warm water after handling and before eating, drinking, chewing gum, using tobacco or using the toilet.

HAZARDS TO DOMESTIC ANIMALS

For external use on dogs only. Do not use on puppies under 7 weeks of age or weighing less than 3 lbs. [11 lbs.] [21 lbs.] [55 lbs.] As with any product, consult your veterinarian before using this product on debilitated, aged, pregnant or nursing dogs. Individual sensitivities may occur after using ANY pesticide product for dogs. If signs persist, or become more severe, consult a Veterinarian immediately. If your dog is on medication, consult your veterinarian before using this or any other product.

PHYSICAL OR CHEMICAL HAZARDS

Combustible. Do not store near heat or open flame.

DIRECTIONS FOR USE

It is a violation of Federal law to use this product in a manner inconsistent with its labeling. Do not allow children to apply product.

READ ENTIRE LABEL BEFORE EACH USE

RESTRICTIONS

- **USE ONLY ON DOGS OR ON PUPPIES 7 WEEKS OF AGE OR OLDER WEIGHING 3 to 10 lbs. [11 to 20 lbs.] [21 to 55 lbs.] [Over 55 lbs.]**
- **DO NOT USE ON DOGS WEIGHING LESS THAN 3 [11] [21] [55] LBS. AND LESS THAN 7 WEEKS OF AGE**
- **DO NOT USE ON ANIMALS OTHER THAN DOGS.**
- **DO NOT EXCEED LABELED DOSAGE AMOUNT FOR DOGS**
- **DO NOT APPLY MORE THAN ONE (1) TUBE PER TREATMENT REGARDLESS OF THE DOG'S WEIGHT**
- **DO NOT REAPPLY FOR FOUR WEEKS [30 DAYS]**
- **DO NOT ALLOW CHILDREN TO APPLY PRODUCT**
- **DO NOT HAVE CONTACT OR ALLOW CHILDREN TO HAVE CONTACT WITH TREATED AREA UNTIL COMPLETELY DRY**

{BACK PANEL -- continued}

Side Effects: Monitor your dog after application. Side effects may include signs of skin irritation such as redness, scratching, or other signs of discomfort. Gastrointestinal signs such as vomiting or diarrhea have also been reported. If these or other side effects (such as lethargy) occur, consult your veterinarian or call 1-800-275-1414.



{1.5 x 1.5 cm black on yellow background}

DO NOT USE ON CATS. Keep cats away from treated dogs for 24 hours. If applied to a cat or ingested by a cat, contact your veterinarian immediately.

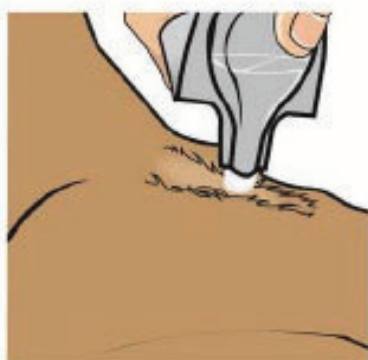
{BACK PANEL – continued}

DIRECTIONS FOR USE

{APPLICATION INSTRUCTIONS}

OPTION 1: for 3 to 10 lbs. or 11 to 20 lbs. packages.}

{Visuals Depicting How to Open Applicator Tube and Application to Animal are Optional.}



7.



8.

HOW TO APPLY

1. Dog should be dry prior to application and remain dry for 24 hours after application {Note to Reviewer: The 24hr dry refers to pre-application; the 48hr in step 12 refers to post application}.
2. Remove one applicator tube from the package.
3. Hold applicator tube in an upright position **facing away from you and your pet's face and eyes**. Pull cap off tube.
4. Turn the cap around and place other end of cap back on tube.
5. Twist cap to break seal, then remove cap from tube.
6. The dog should be standing for easy application.
7. Part the hair on the dog's back, between the shoulder blades, until the skin is visible.
8. Place the tip of the tube on the skin and squeeze the tube to expel the entire contents directly on the skin.
9. ***Do not get this product in your dog's eyes or allow your dog to ingest this product. Do not allow the product to run off.***
10. Discard empty tube as described in the Storage and Disposal section.
11. Under normal conditions the product is effective for a month. However, in case of severe flea infestation, retreatment may be necessary earlier than four weeks. Do not re-treat more often than once every seven (7) days. After flea control is obtained, return to a monthly retreatment schedule.
12. Do not bathe dog for 48 hours after product application.

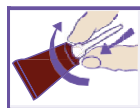
{BACK PANEL – continued}

{OPTION 2: for 3 to 10 lbs. or 11 to 20 lbs. packages}

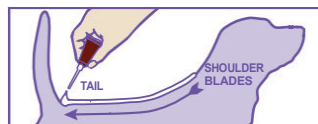
{Visuals depicting how to open applicator tube and application to animal are **optional**. The numbers **underneath** the graphics correspond to the numbers in the How to Apply section below.}



3.



4.



5.

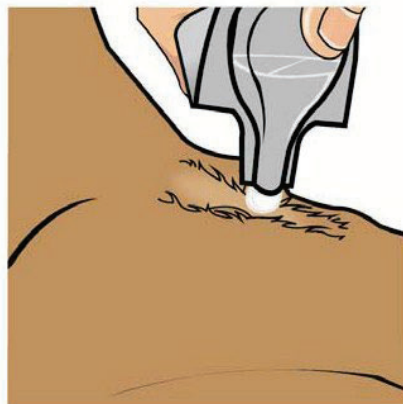
HOW TO APPLY

1. Dog should be dry prior to application and remain dry for 24 hours after application. {Note to Reviewer: The 24hr dry refers to pre-application; the 48hr in step 8 refers to post application}.
2. Remove one applicator tube from the package.
3. Hold applicator tube in an upright position **facing away from you and your pet's face and eyes**.
4. Twist dispensing tip clockwise about ½ turn while pushing down to break the tube's seal. Do not remove the dispensing tip.
5. The dog should be standing for easy application. Part the hair on the dog's back, between the shoulder blades, until the skin is visible. Place the tip of the tube on the skin and squeeze the tube to expel the entire contents directly on the skin. ***Do not get this product in your dog's eyes or allow your dog to ingest this product.*** Do not allow the product to run off.
6. Discard empty tube as described in the Storage and Disposal section.
7. Under normal conditions the product is effective for a month. However, in case of severe flea infestation, retreatment may be necessary earlier than four weeks. Do not re-treat more often than once every seven (7) days. After flea control is obtained, return to a monthly retreatment schedule.
8. Do not bathe dog for 48 hours after product application.

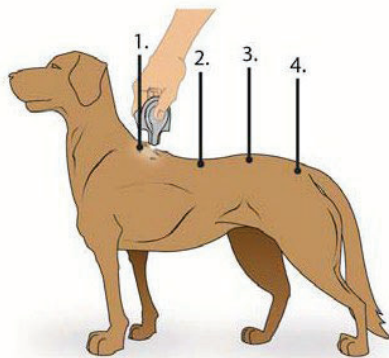
{BACK PANEL – continued}

{OPTION 3: for 21 to 55 lbs. and Over 55 lbs. packages}

{Visuals depicting how to open applicator tube and application to animal are **optional**. The numbers **underneath** the graphics correspond to the numbers in the How to Apply section below.}



8.



9.

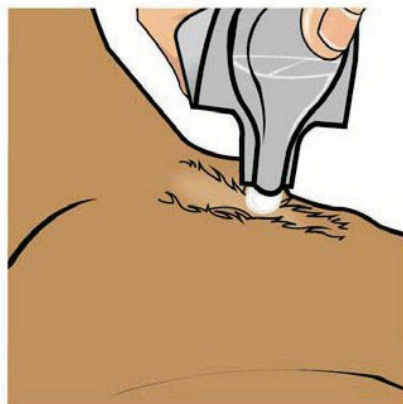
HOW TO APPLY

1. Dog should be dry prior to application and remain dry for 24 hours after application. {Note to Reviewer: The 24hr dry refers to pre-application; the 48hr in step 12 refers to post application}.
2. Remove one applicator tube from the package.
3. Hold applicator tube in an upright position **facing away from you and your pet's face and eyes**.
4. Pull cap off tube.
5. Turn the cap around and place other end of cap back on tube.
6. Simply press cap down to break the seal of the tube. Remove cap carefully.
7. The dog should be standing for easy application.
8. Part the hair on the dog's back, between the shoulder blades, until the skin is visible.
9. Apply the entire contents of the tube evenly to three or four spots on the top of the back from the shoulder to the base of the tail. At each spot, part the hair until the skin is visible. Place the tip of the tube on the skin and gently squeeze to expel a portion of the solution on the skin. Do not apply an excessive amount of solution at any one spot that could cause some of the solution to run off the side of the dog. **Do not get this product in your dog's eyes or allow your dog to ingest this product.**
10. Discard empty tube as described in the Storage and Disposal section.
11. Under normal conditions the product is effective for a month. However, in case of severe flea infestation, retreatment may be necessary earlier than four weeks. Do not re-treat more often than once every seven (7) days. After flea control is obtained, return to a monthly retreatment schedule.
12. Do not bathe dog for 48 hours after product application.

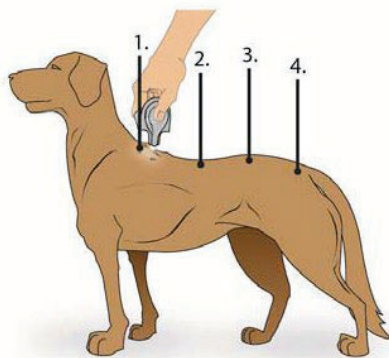
{BACK PANEL – continued}

{OPTION 4: for 21 to 55 lbs. and Over 55 lbs. packages}

{Visuals depicting how to open applicator tube and application to animal are **optional**. The numbers **underneath** the graphics correspond to the numbers in the How to Apply section below.}



6.



7.

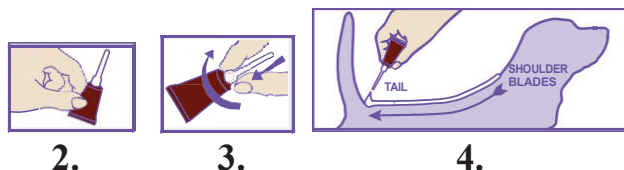
HOW TO APPLY

1. Dog should be dry prior to application and remain dry for 48 hours after application. {Note to Reviewer: The 24hr dry refers to pre-application; the 48hr in step 12 refers to post application}.
2. Remove one applicator tube from the package.
3. Hold applicator tube in an upright position **facing away from you and your pet's face and eyes..**
4. Twist dispensing tip clockwise about ½ turn while pushing down to break the tube's seal. Do not remove the dispensing tip.
5. The dog should be standing for easy application.
6. Part the hair so the skin is visible in each spot.
7. Apply the entire contents of the tube evenly to three or four spots on the top of the back, from the shoulder to the base of the tale.
8. At each spot, part the hair until the skin is visible. Place the tip of the tube on the skin and gently squeeze to expel a portion of the solution on the skin. Do not apply an excessive amount of solution at any one spot that could cause some of the solution to run off the side of the dog.
Do not get this product in your dog's eyes or allow your dog to ingest this product.
9. Discard empty tube as described in the Storage and Disposal section.
10. Under normal conditions the product is effective for a month. However, in case of severe flea infestation, retreatment may be necessary earlier than four weeks. Do not re-treat more often than once every seven (7) days. After flea control is obtained, return to a monthly retreatment schedule.
11. Do not bathe dog for 48 hours after product application.

{BACK PANEL – continued}

{OPTION 5 – All Dog Sizes}

*{Visuals depicting how to open applicator tube and application to animal are **optional**. The numbers **underneath** the graphics correspond to the numbers in the How to Apply section below.}*



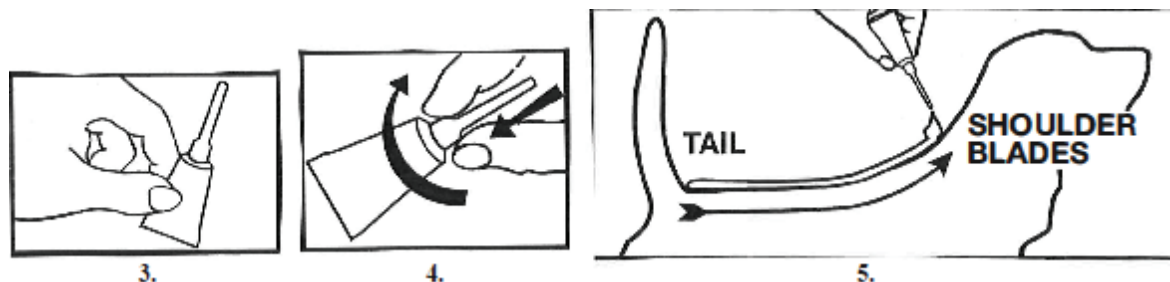
HOW TO APPLY

1. Dog should be dry prior to application and remain dry for 24 hours after application. {Note to Reviewer: The 24hr dry refers to pre-application; the 48hr in step 8 refers to post application}.
2. Remove one applicator tube from the package and hold in an upright position pointed away from your face.
3. Twist dispensing tip clockwise about ½ turn while pushing down to break the tube seal. Do not remove the dispensing tip.
4. Position the dispensing tip on the dog's back between the shoulder blades. Use the dispensing tip of the tube to part the dog's hair so that the product will be applied to the skin level. Begin squeezing out the contents of the tube to form a stripe as you move from the shoulder blades along the dog's back to the base of the tail.
5. Repeat every month.
6. Separate treated dog from other dogs and cats [pets] for 24 hours after treatment has been applied.
7. In case of severe pest infestation, you are able to retreat your dog earlier than 4 weeks. If infestation is severe at the initiation of the treatment, once a week treatment is permitted not to exceed 4 weeks. After pest control has been successful, please return to monthly retreatments schedule.
8. Do not bathe dog for 48 hours after product application.

{BACK PANEL – continued}

{OPTION 6 – All Dog Sizes}

*{Visuals depicting how to open applicator tube and application to animal are **optional**. The numbers **underneath** the graphics correspond to the numbers in the How to Apply section below.}*



HOW TO APPLY

1. Dog should be dry prior to application and remain dry for 24 hours after application. {Note to Reviewer: The 24hr dry refers to pre-application; the 48hr in step 8 refers to post application}.
2. Remove one applicator tube from the package.
3. Hold in an upright position pointed away from your face.
4. Twist dispensing tip clockwise about $\frac{1}{2}$ turn while pushing down to break the tube seal. Do not remove the dispensing tip.
5. Position the dispensing tip at the base of tail. Use the dispensing tip of the tube to part the dog's hair so that the product will be applied to the skin level. Begin squeezing out the contents of the tube to form a stripe as you move from the tail along the dog's back to the shoulders..
6. Repeat every month.
7. Separate treated dog from other dogs and cats [pets] for 24 hours after treatment has been applied.
8. In case of severe pest infestation, you are able to retreat your dog earlier than 4 weeks. If infestation is severe at the initiation of the treatment, once a week treatment is permitted not to exceed 4 weeks. After pest control has been successful, please return to monthly retreatments schedule.
9. Do not bathe dog for 48 hours after product application.

{BACK PANEL – continued}

STORAGE AND DISPOSAL

Do not contaminate water, food, or feed by storage or disposal.

PESTICIDE STORAGE: Keep this product in its tightly closed original container, when not in use. Store in a cool, dry, preferably locked area that is inaccessible to children and animals.

PESTICIDE DISPOSAL: Wastes resulting from the use of this product may be disposed of on site or at an approved waste disposal facility.

CONTAINER HANDLING: Non-refillable container. Do not reuse or refill this container. *If empty:* Offer for recycling, if available. *If partly filled:* Call your local solid waste agency or 1-800-275-1414 for disposal instructions. Never place unused product down any indoor or outdoor drain.

[For more information call our [flea] experts at 1-800-275-1414 [weekdays, 9 am – 5 pm E.S.T].]
{Note to Reviewer: this section may include supplemental distributor number.}

EPA Reg. No. 2596-182
EPA Est. No. -

Hartz[®] and other trademarks are trademarks of The Hartz Mountain Corporation.
[Made in the USA with domestic and imported materials.]

Made by The Hartz Mountain Corporation, 200 Plaza Drive, Secaucus, NJ 07094 (U.S.A.)

{INSTRUCTIONS FOR BLISTER PACK}

HOW TO OPEN



{OPTION 1}:

1. Being careful not to cut close to the blister cavities, take scissors and cut along dotted line.
2. Peel off the foil [paper] from the individual blister cavity, and take out the tube.
3. Follow application instructions.
4. Repeat steps 1 and 2 for each tube.

{OPTION 2}:

1. Separate foil [paper] from corner of blister package.
2. Peel back foil[paper] and take out the tube.
3. Follow application instructions.

{Note to Reviewer: Product may be packaged in an open tray no opening direction required}

{INDIVIDUAL TUBE TEXT}

{Primary brand name of product to be inserted here}

{The appropriate size and fill volume will be correctly used on each applicable dog's weight category}

Only for Use on Dogs and Puppies 7 Weeks or Older Weighing *{insert text with weight and fill volume from a line immediately below}*

3 to 10 lbs. - 0.013 fl. oz. (0.4 ml.)
11 to 20 lbs. - 0.034 fl. oz. (1.0 ml.)
21 to 55 lbs. - 0.084 fl. oz. (2.5 ml.)
Over 55 lbs. - 0.135 fl. oz. (4.0 ml.)

9.10% Imidacloprid
0.46% Pyriproxyfen

KEEP OUT OF REACH OF CHILDREN

CAUTION

Read the Entire Label before Use

EPA Reg. No. 2596-182

EPA Est. No. 2596-

{Lot No. is heat stamped in tube crimp- required number}

{OPTIONAL LABEL TEXT}

- {Product Name} contains Imidacloprid and [an][the] insect growth regulator [IGR] Pyriproxyfen
- One treatment prevents flea infestation for 4 weeks [1 month]
- Convenient, easy-to-apply topical solution for dogs to treat flea infestations
- Convenient, easy-to-apply [and fragrance free] [monthly] [topical solution] to treat flea infestations on dogs.
- Once a month topical flea treatment for dogs-[puppies] 7 weeks of age or older and weighing 3-10 lbs [11-20 lbs.] [21-55 lbs.] [over 55 lbs.].
- {Product Name} is for the prevention and treatment of fleas on dogs 7 weeks of age and older and weighing 3-10 lbs [11-20 lbs.] [21-55 lbs.] [over 55 lbs.].
- For the treatment and prevention of flea [and lice] infestations on dogs and puppies.
- One treatment prevents further flea infestations for 4 weeks [1 month] [30 days]
- Kills larval stages of fleas
- Prevents flea eggs from hatching (or developing into biting adults)
- Prevents existing flea infestations by killing adult fleas
- Prevents flea eggs from hatching [or developing] [into biting adults]
- Effectively targets life stages of fleas
- Kills [Controls] flea life stages on dogs and puppies 7 weeks of age & older and weighing 3-10 lbs. [11-20 lbs.] [21-55 lbs.] [over 55 lbs.]
- Prevents flea eggs [and flea larvae] from developing into [biting] [adult] fleas]
- Treatment with {Product Name} kills fleas which may cause flea allergic dermatitis (FAD) [or flea bite hypersensitivity]
- Flea adulticide, larvicide, and ovicide
- Kills flea eggs on dogs
- Controls [and Provides] protection against fleas on dogs and puppies 7 weeks of age and older and weighing 3-10 lbs [11-20 lbs.] [21-55 lbs.] [over 55 lbs.]
- Controls existing fleas and flea eggs on dogs and puppies 7 weeks and older weighing 3-10 lbs [11-20 lbs.] [21-55 lbs.] [over 55 lbs.]
- Controls flea problems on dogs [on dogs and puppies]
- Provides flea protection on dogs [on dogs and puppies]
- Controls existing fleas and flea eggs plus [and] [prevents] future flea reinfestation.
- Starts working through contact
- Year round prevention when used on a month
- Use flea prevention year-round
- Contains an insect growth regulator (IGR) to kill flea eggs and prevent reinfestation
- Monthly use of {Product Name} for Dogs kills fleas which may cause flea allergy dermatitis [flea bite hypersensitivity]
- Multi-stage flea control
- Kills fleas which may serve as intermediate hosts for tapeworms
- Kills biting [chewing] lice

-
- For treatment and prevention of biting [chewing] lice [infestations] [on dogs] [on dogs and puppies older than 7 weeks] and weighing 3-10 lbs [11-20 lbs.] [21-55 lbs.] [over 55 lbs.]
 - For the Prevention and Treatment of Flea and Lice Infestations on Dogs
 - Stops existing [biting] [chewing] lice infestations
 - Dual protection against fleas and lice
 - Treats, prevents and controls biting [chewing] lice [infestations]
 - Provides effective control of biting [chewing] lice [infestations]
 - Kills biting [chewing] lice and prevents further reinfestations
 - For treatment and prevention of infestations with [biting] [chewing] lice
 - Remains effective after bathing and/or swimming
 - Remains effective following swimming and/or shampooing
 - Waterproof after 48 hours
 - Remains effective after exposure to rain
 - Prevents [establishment of] new infestations after application
 - Prevents all flea stages [eggs, larvae] from developing
 - Prevents all flea stages [eggs, larvae, pupae] from developing
 - Kills fleas, flea eggs, larvae, pupae [for] [4 weeks] [1 month] [30 days]
 - Stays on and doesn't rub off for 1 month [4 weeks]
 - Kills fleas for 30 days [1 month] [4 weeks]
 - Stops and prevents infestations
 - Prevents re-infestation [reinfestation]
 - Prevents and controls re-infestation [reinfestations]
 - Long lasting – 4 weeks [- 1 month]
 - Effective and convenient topical treatment
 - [With] patented applicator [tube]
 - Effective after bathing
 - [Remains] Effective after exposure to water
 - Easy spot on topical applicator [tube]
 - Remains effective even after bathing and water immersion
 - {Product Name} remains effective even after bathing and water immersion

{Note to Reviewer: The active ingredient claims will not be presented in an overly large font, such that the claim is set in a font type no larger than that of the Signal Word on the label. Furthermore, the claim will not be presented with heavily bolded or highlighted type or use coloring to cause claim to excessively stand out over the rest of the labeling text. The format of the claim will not be in such a way that it causes greater attention than other required precautionary labeling on the label.}

-
- Contains Imidacloprid and Pyriproxyfen, the active ingredients used in Advantage® II
 - Contains the active ingredients used in Advantage® II [products]
 - Contains Imidacloprid and Pyriproxyfen, the active ingredients used in Advantage® II. {Product Name} is not manufactured by or distributed by Elanco. Advantage® II is a registered trademark of Elanco Animal Health

{Note to Reviewer: Whenever any of the 3 claims immediately above are included on the label, it will include the appropriate disclaimer below, which will be placed directly below the optional active ingredient claims so both are viewed together.}

- Only for dogs and puppies 7 weeks of age and older and weighing 3-10 lbs [11-20 lbs.] [21-55 lbs.] [over 55 lbs.]
- Specially formulated for dogs and puppies 7 weeks of age and older and weighing 3-10 lbs [11-20 lbs.] [21-55 lbs.] [over 55 lbs.]
- Kills fleas within 12 hours of application
- Kills fleas on dogs within 12 hours and continues to prevent infestations for four weeks [1 month] [30 days]

{NON-PESTICIDE RELATED CLAIMS AND OTHER OPTIONAL TEXT}

- 1st dose, 2nd dose, 3rd dose, 4th dose, 5th dose, 6th dose,
- First month, second month, third month, fourth month, fifth month, sixth month
- Value pack *{Note to Reviewer: Stacking/ wrapping or combining packages for Value marketing will not obscure mandatory language.}*
- 1 [2] [3] [4] [5] [6] month supply
- 4 [6] monthly treatment[s]
- Apply monthly [every 30 days]
- Convenient [easy to use] applicator
- 4 [6] Pro-cision Flo® Applicator[s] [included]
- 4 [6] Pro-glide® Applicator[s] [included]
- Pro-cision Flo® Applicator
- Pro-Glide® Applicator
- Featuring Pro-cision Flo® [Pro-Glide®] Applicator [for easy application]
- Direct to your dog's skin
- Easy [simple] to use [handle] [apply]
- Made in the U.S.A
- Convenient to use
- After application, the treated area may appear wet for up to 24 hours
- You may bathe your dog 4 days after application
- To help remind you when you last applied treatment, simply write in the date when each dose is applied:
First Dose _____
Second Dose _____
Third Dose _____
Fourth Dose _____
Fifth Dose _____
Sixth Dose _____
- From the brand with over 90 [95][96][97][98][99] years [of] experience caring for pets
- From the brand with over 90[95][96][97][98][99] years [of] experience devoted to pets
- From the brand with over 90[95][96][97][98][99] years [of] experience dedicated to pets
- From the brand with over a 90[95][96][97][98][99] years of commitment to pets
- Hartz the brand with over 90[95][96][97][98][99] years [of] experience [caring for pets][devoted to pets][dedicated to pets][committed to pets]
- Caring for pets for over 90[95][96][97][98][99] years
- Serving pets for over 90[95][96][97][98][99] years
- Helping pets for over 90[95][96][97][98][99] years

{OPTIONAL MARKETING ICONS}

{Note to Reviewer: The mosquito graphic and the word “Mosquitoes” have been deleted from the EPA Label dated April 29, 2025.}



Adult Fleas



Flea Eggs



Flea Eggs



Flea Larvae



Flea Larvae



May 8, 2025

{Note to Reviewer: The following optional images have been added to the April 29, 2025 EPA label. Dog images appearing on marketplace label will match the appropriate weight class shown on the marketplace label.}



Color strip on bottom of tube will change depending on size of dog

{Alternate Brand Names}

Hartz Defense for Dogs
Hartz Defense for Dogs and [&] Puppies
Hartz First Max Defense for Dogs

Hartz Defense Pro for Dogs and [&] Puppies
Hartz Defense Guardian for Dogs
Hartz Defense Guardian for Dogs and [&] Puppies
Hartz Defense Advanced for Dogs and [&] Puppies

Hartz First Advanced for Dogs
Hartz First Advanced for Dogs and [&] Puppies
Hartz First Advanced Pro for Dogs
Hartz First Advanced Pro for Dogs and [&] Puppies

Hartz First UltraGuard Sentinel for Dogs
Hartz First UltraGuard Sentinel for Dogs and [&] Puppies
Hartz First UltraGuard Sentinel Max for Dogs
Hartz First UltraGuard Sentinel Max for Dogs and [&] Puppies
Hartz First UltraGuard Sentinel Plus for Dogs
Hartz First UltraGuard Sentinel Plus for Dogs and [&] Puppies
Hartz First UltraGuard Sentinel Pro for Dogs
Hartz First UltraGuard Sentinel Pro for Dogs and [&] Puppies
Hartz First UltraGuard Defender for Dogs
Hartz First UltraGuard Defender for Dogs and [&] Puppies

Hartz First UltraShield for Dogs
Hartz First UltraShield for Dogs and [&] Puppies
Hartz First ImidaShield for Dogs
Hartz First ImidaShield for Dogs and [&] Puppies
Hartz First ImidaShield Plus for Dogs
Hartz First ImidaShield Plus for Dogs and [&] Puppies
Hartz First ImidaShield Pro for Dogs
Hartz First ImidaShield Pro for Dogs and [&] Puppies

Hartz First ImidaGuard for Dogs
Hartz First ImidaGuard for Dogs and [&] Puppies
Hartz First ImidaGuard for Dogs
Hartz First ImidaGuard for Dogs and [&] Puppies
Hartz First ImidaGuard Plus for Dogs
Hartz First ImidaGuard Plus for Dogs and [&] Puppies
Hartz First ImidaGuard Pro for Dogs
Hartz First ImidaGuard Pro for Dogs and [&] Puppies