



OFFICE OF CHEMICAL SAFETY AND POLLUTION PREVENTION

WASHINGTON, D.C. 20460

March 15, 2025

Anna McGrath
amcgrath@hartz.com
THE HARTZ MOUNTAIN CORPORATION

Subject: Non-PRIA (Pesticide Registration Improvement Act) Labeling Amendment - Revise label with tube opening directions and optional graphics
Product Name: HARTZ REFERENCE # 143
Admin Number: 2596-178
EPA Receipt Date: 08/25/2024
Action Case Number: 00632451

Dear Anna McGrath:

The amended labeling referred to above, submitted in connection with registration under the Federal Insecticide, Fungicide, and Rodenticide Act, as amended, is acceptable.

This approval does not affect any terms or conditions that were previously imposed on this registration. You continue to be subject to existing terms or conditions on your registration and any deadlines connected with them.

A stamped copy of your labeling is enclosed for your records. This labeling supersedes all previously accepted labeling. You must submit one (1) copy of the final printed labeling before you release this product for shipment with the new labeling. In accordance with 40 CFR § 152.130(c), you may distribute or sell this product under the previously approved labeling for 18 months from the date of this letter. After 18 months, you may only distribute or sell this product if it bears this new revised labeling or subsequently approved labeling. "To distribute or sell" is defined under FIFRA section 2(gg) and its implementing regulation at 40 CFR § 152.3.

Should you wish to add/retain a reference to your company's website on your label, then please be aware that the website becomes labeling under FIFRA and is subject to review by EPA. If the website is false or misleading, the product will be considered to be misbranded and sale or distribution of the product is unlawful under FIFRA section 12(a)(1)(E). 40 CFR § 156.10(a)(5) lists examples of statements the EPA may consider false or misleading. In addition, regardless of whether a website is referenced on your product's label, claims made on the website may not substantially differ from those claims approved through the registration process. Therefore, should the EPA find or if it is brought to our attention that a website contains statements or claims substantially differing from statements or claims made in connection with obtaining a FIFRA section 3 registration, the website will be referred to the EPA's Office of Enforcement and Compliance Assurance.

Your release for shipment of this product constitutes acceptance of these terms. If these terms are not complied with, this registration will be subject to cancellation in accordance with FIFRA section 6.

If you have questions, please contact Elizabeth Andrews via email at andrews.elizabeth@epa.gov.

Sincerely,

Kable Bo Davis

Kable Bo Davis, Senior Advisor
IVB2, RD
Office of Pesticide Programs

Hartz® Reference # 143

{Text in [] denotes optional or alternate language. Text in { } denotes location of text on packaging, notes to reviewer, and text that will not be on final label. Text in () appears on label.}

{Primary Brand Name not to be used on any product labels. The word Dog will be included in all Alternate Brand Names and be at least 40% of the size of the largest letter in the Alternate Brand Name.}

{Alternate Brand Names are listed at end of document.}

{FRONT PANEL}

{Included on front panel is a large, clear picture of a dog in the weight range for the product.}

ACTIVE INGREDIENTS:

Fipronil.....	9.80%
(S)Methoprene.....	8.80%
Pyriproxyfen.....	0.25%
OTHER INGREDIENTS.....	81.15%
TOTAL.....	100.00%

KEEP OUT OF REACH OF CHILDREN

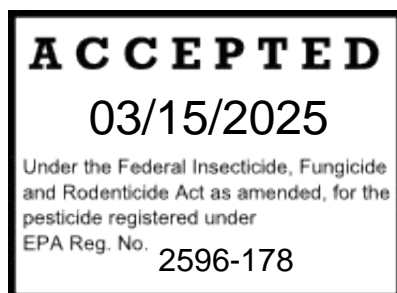
CAUTION: See back panel for First Aid and additional Precautionary Statements.

NET CONTENTS:

{Weight Range and corresponding Net Contents in this table will be placed prominently on the front panel.}

{For 1 applicator tube package, and each weight class noted is for separate applicator tube text}

ONLY for use on Dogs and Puppies 8 weeks and older Weighing:	Net Contents Each applicator tube
5 - 22 lbs	0.023 fl oz (0.67 mL) [Applicator tube]
23 - 44 lbs	0.045 fl oz (1.34 mL) [Applicator tube]
45 - 88 lbs	0.091 fl oz (2.68 mL) [Applicator tube]
89 – 132 lbs	0.136 fl oz (4.02 mL) [Applicator tube]



{Weight Range and corresponding Net Contents in this table will be placed prominently on the front panel.}

{For 3 applicator tube pack}

ONLY for use on Dogs and Puppies 8 weeks and older Weighing:	Net Contents Each applicator tube
5 - 22 lbs	0.069 fl oz (2.01 mL), Contains 3 [-] [applicator tubes, each] 0.023 fl oz (0.67 mL) [Applicator tubes]
23 - 44 lbs	0.135 fl oz (4.02 mL), Contains 3 [-] [applicator tubes, each] 0.045 fl oz (1.34 mL) [Applicator tubes]
45 - 88 lbs	0.273 fl oz (8.04 mL), Contains 3 [-] [applicator tubes, each] 0.091 fl oz (2.68 mL) [Applicator tubes]
89 – 132 lbs	0.408 fl oz (12.06 mL), Contains 3 [-] [applicator tubes, each] 0.136 fl oz (4.02 mL) [Applicator tubes]

{Weight Range and corresponding Net Contents in this table will be placed prominently on the front panel.}

{For 6 applicator tube pack}

ONLY for use on Dogs and Puppies 8 weeks and older Weighing:	Net Contents Each applicator tube
5 - 22 lbs	0.138 fl oz (4.02 mL), Contains 6 [-] [applicator tubes, each] 0.023 fl oz (0.67 mL) [Applicator tubes]
23 - 44 lbs	0.27 fl oz (8.04 mL), Contains 6 [-] [applicator tubes, each] 0.045 fl oz (1.34 mL) [Applicator tubes]
45 - 88 lbs	0.546 fl oz (16.08 mL), Contains 6 [-] [applicator tubes, each] 0.091 fl oz (2.68 mL)] [Applicator tubes]
89 – 132 lbs	0.816 fl oz (24.12 mL), Contains 6 [-] [applicator tubes, each] 0.136 fl oz [4.02 mL] [Applicator tubes]

{Cat Warning: A cat prohibition icon in a box, 1.5 cm x 1.5cm, black image on a yellow background, will appear on the lower right hand corner of the front panel.}

DO NOT USE ON CATS



{1.5 x 1.5 icon}

{BACK PANEL}

PRECAUTIONARY STATEMENTS HAZARDS TO HUMANS

CAUTION

Harmful if swallowed. Causes moderate eye irritation. Avoid contact with eyes or clothing. Wash hands thoroughly with soap and water after handling and before eating, drinking, chewing gum, using tobacco or using the toilet.

HAZARDS TO DOMESTIC ANIMALS.

For external use only. Do not use on dogs or puppies under 8 weeks of age or weighing less than *{Insert lowest weight of weight class.}* Sensitivities may occur after using **ANY** pesticide product for dogs. If signs of sensitivity occur bathe your dog with mild soap and rinse with large amounts of water. If signs continue, consult a veterinarian immediately. Dogs may experience some temporary irritation at the site of product application. Consult a veterinarian before using this product on medicated, debilitated, pregnant, lactating/nursing or aged dogs. Call 1-800-275-1414 [1-XXX-XXX- XXXX] for 24-hour assistance. If your dog is exhibiting signs of and/or is being treated for skin dermatitis, talk to your veterinarian before applying any topical flea and tick control product.

PHYSICAL OR CHEMICAL HAZARDS

COMBUSTIBLE: Do not use or store near heat or open flame.

FIRST AID

IF SWALLOWED: Call a poison control center or doctor immediately for treatment advice person sip a glass of water if able to swallow. Do not induce vomiting unless told to do so by a control center or doctor. Do not give anything by mouth to an unconscious person.

IF IN EYES: Hold eye open and rinse slowly and gently with water for 15 - 20 minutes. Remove contact lenses, if present, after the first 5 minutes, then continue rinsing eye. Call a poison control center or doctor for treatment advice.

IF ON SKIN OR CLOTHING: Take off contaminated clothing. Rinse skin immediately with plenty of water for 15 – 20 minutes. Call a poison control center or doctor for treatment advice.

HOT LINE NUMBER: Have the product container or label with you when calling a poison control center or doctor, or going for treatment. For additional information on this product [including health concerns, medical emergencies or pesticide incidents], you may call 1-800- 275-1414 [X-XXX-XXX-XXXX], twenty four [24] hours per day, seven [7] days per week.

DIRECTIONS FOR USE

{Note to Reviewer: The headline “DIRECTIONS FOR USE” will be bolded and will be a larger font size than all the subsequent text in the Directions for Use section. In addition, all the information and text immediately below the headline, until the Storage and Disposal section, falls within the Directions for Use section .}

It is a violation of Federal law to use this product in a manner inconsistent with its labeling. Do not allow children to apply product.

READ ENTIRE LABEL BEFORE EACH USE

RESTRICTIONS

DO NOT USE ON DOGS OR PUPPIES 8 WEEKS OF AGE AND YOUNGER

DO NOT APPLY TO DOGS OR PUPPIES WEIGHING LESS THAN 5 LBS [23 LBS][45 LBS][89 LBS]

DO NOT EXCEED LISTED DOSAGE AMOUNT FOR DOGS

DO NOT ALLOW YOUR DOG TO INGEST THIS PRODUCT

DO NOT USE ON RABBITS, CATS, KITTENS, OR OTHER ANIMALS

DO NOT REAPPLY (ALTERNATE BRAND NAME) FOR ONE MONTH

DO NOT BATHE FOR 48 HOURS AFTER APPLICATION

DO NOT APPLY MORE THAN ONE APPLICATOR TUBE PER TREATMENT ON ONE DOG REGARDLESS OF THE DOG’S WEIGHT

DIRECTIONS FOR USE {OPTION 1}

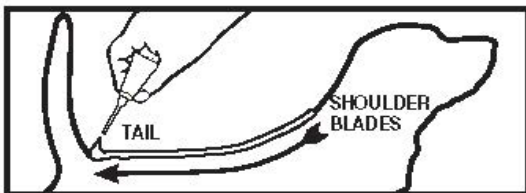
{The sentence “Dog must be dry at time of application and remain dry for 48 hours after application” was added to Step #3 in the Directions for Use.graphic}:



1. Remove one applicator tube from the package and hold in an upright position pointed away from your face.



2. Twist dispensing tip clockwise about ½ turn while pushing down to break the tube’s seal. Do not remove the dispensing tip.

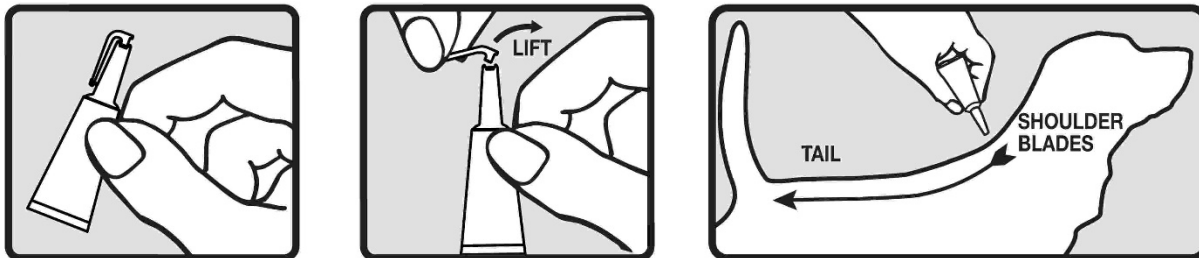


3. Dog must be dry at time of application and remain dry for 48 hours after application. Position the dispensing tip on the dog’s back between the shoulder blades. Use the dispensing tip of the tube to part the dog’s hair so that the product will be applied at skin level. Begin squeezing out the contents of the tube to form a stripe as you move from the shoulder blades along the dog’s back to the base of the tail. You may bathe your dog 48 hours after application.

4. Repeat every month.

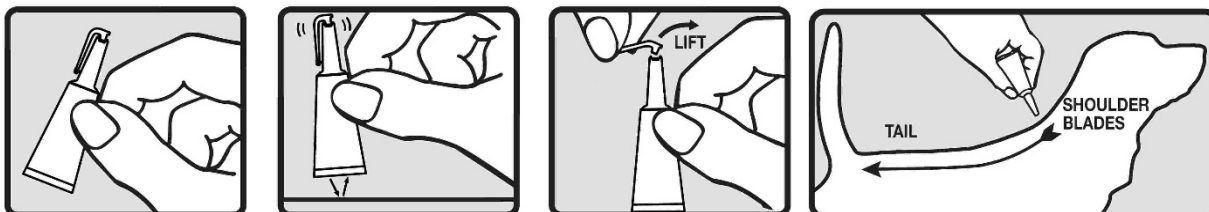
DIRECTIONS FOR USE {OPTION 2}

1. Dog must be dry at time of application and remain dry for 48 hours after application.
2. Remove one applicator tube [tube] from the package and hold in an upright position [at the neck of the tube] pointed away from your face.
3. Lift the handle [lever] [at the neck of the tube] in an upward motion to separate from [the body of] the tube.
4. Position the tip of the tube on the dog's back at the base of the dog's neck between the shoulder blades. Use the tip of the tube to part the dog's hair so that the product will be applied at the skin level [to the skin].
5. Begin squeezing out the contents of the tube to form a stripe as you move from the base of the neck, along the dog's back to the tail.
6. Repeat every month [30 days] [4 weeks].



DIRECTIONS FOR USE {OPTION 3}

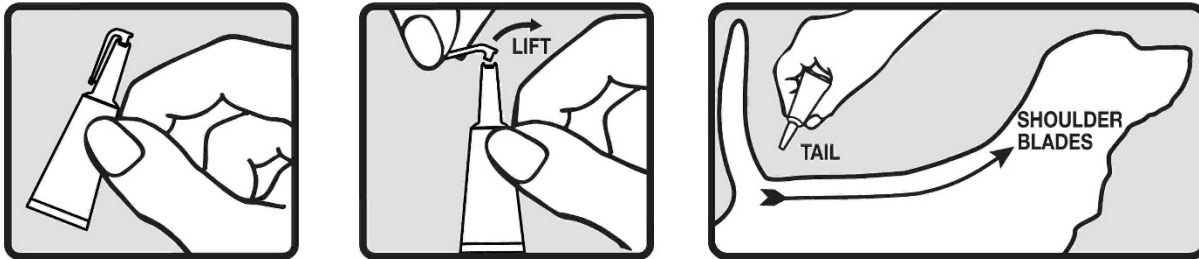
1. Dog must be dry at time of application and remain dry for 48 hours after application.
2. Remove one applicator tube [tube] from the package and hold in an upright position [at the neck of the tube] pointed away from your face.
3. Tap applicator tube [tube] to settle liquid into the sealed end of the tube.
4. Lift the handle [lever] [at the neck of the tube] in an upward motion to separate from [the body of] the tube.
5. Position the tip of the tube on the dog's back at the base of the dog's neck between the shoulder blades. Use the tip of the tube to part the dog's hair so that the product will be applied at the skin level [to the skin].
6. Begin squeezing out the contents of the tube to form a stripe as you move from the base of the neck, along the dog's back to the tail.
7. Repeat every month [30 days] [4 weeks].



DIRECTIONS FOR USE {OPTION 4}

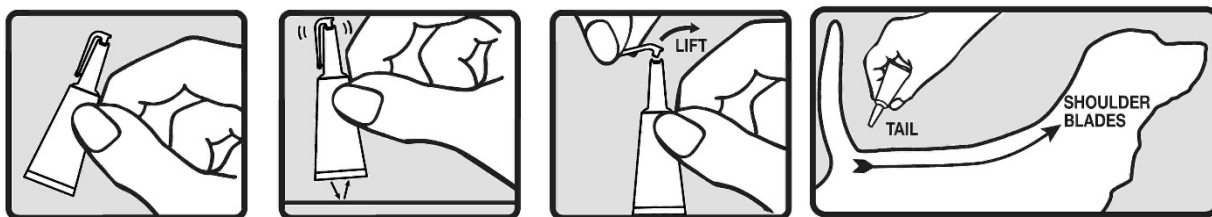
{Note to Reviewer: Step 3 is an optional step in these directions and is therefore enclosed in brackets.}

1. Dog must be dry at time of application and remain dry for 48 hours after application.
2. Remove one applicator tube [tube] from the package and hold in an upright position [at the neck of the tube] pointed away from your face.
3. Lift the handle [lever] [at the neck of the tube] in an upward motion to separate from [the body of] the tube.
4. Position the tip of the tube on the dog's back at the base of the dog's tail. Use the tip of the tube to part the dog's hair so that the product will be applied at the skin level [to the skin].
5. Begin squeezing out the contents of the tube to form a stripe as you move from the base of the tail, along the dog's back to the shoulder blades.
6. Repeat every month [30 days] [4 weeks].



DIRECTIONS FOR USE {OPTION 5}

1. Dog must be dry at time of application and remain dry for 48 hours after application.
2. Remove one applicator tube [tube] from the package and hold in an upright position [at the neck of the tube] pointed away from your face.
3. Tap applicator tube [tube] to settle liquid into the sealed end of the tube.
4. Lift the handle [lever] [at the neck of the tube] in an upward motion to separate from [the body of] the tube.
5. Position the tip of the tube on the dog's back at the base of the dog's tail. Use the tip of the tube to part the dog's hair so that the product will be applied at the skin level [to the skin].
6. Begin squeezing out the contents of the tube to form a stripe as you move from the base of the tail, along the dog's back to the shoulder blades.
7. Repeat every month [30 days] [4 weeks].



FREQUENCY OF APPLICATION

Use monthly to break the flea life cycle and control tick and chewing lice infestations. *{Alternate Brand Name}* kills ticks for one month.

{Alternate Brand Name} remains effective for one month, even after exposure to sunlight. Remains effective even 48 hours after bathing or water immersion. Avoid contact with treated area until dry. Do not reapply *{Alternate Brand Name}* for one month.

{Note to Reviewer: Opening Instruction for Single Blister: A dashed line will be printed on the front of the blister package, accompanied by a scissor symbol indicating where to cut the blister package. The back of the blister package will be printed with an arrow with the words "PEEL BACK", dictating where to peel in order to open the blister package.}

STORAGE AND DISPOSAL

Do not contaminate water, food, or feed by storage or disposal. Do not use or store near heat or open flame.

PESTICIDE STORAGE: Keep this product in its tightly closed original container, when not in use. Store in a cool, dry [preferably locked] area that is inaccessible to children and animals.

PESTICIDE DISPOSAL: Wastes resulting from the use of this product may be disposed of on site or at an approved waste disposal facility.

CONTAINER HANDLING: Non-refillable container. Do not reuse or refill this container. *If empty:* Offer for recycling, if available or place in trash. *If partly filled:* Call your local solid waste agency for disposal instructions. Never place unused product down any indoor or outdoor drain.

SIDE EFFECTS *(Located in a box immediately above the cat warning on the back panel)*

Monitor your dog after application. Side effects may include signs of skin irritation such as redness, scratching, or other signs of discomfort. Gastrointestinal signs such as vomiting or diarrhea have also been reported. If these or other side effects occur, consult your veterinarian or call 1-800-275-1414 [1-XXX-XXX-XXXX].

{Cat Warning: A cat prohibition icon in a box, 1.5 cm x 1.5cm, black image on a yellow background, will appear on the lower right hand corner of the back panel.}



DO NOT USE ON CATS. Keep cats away from treated dogs for 24 hours. If applied to or ingested by a cat, contact your veterinarian.

EPA Reg. No. 2596-178 EPA Est.
No. 2596-OH-1

Hartz[®] and other trademarks are trademarks of The Hartz Mountain Corporation.
Made by The Hartz Mountain Corporation, 200 Plaza Drive, Secaucus, NJ 07094 [U.S.A.]

{INDIVIDUAL APPLICATOR TUBE TEXT}

{Alternate Brand Name}

For use ONLY on DOGS AND PUPPIES 8 WEEKS OR OLDER weighing (*insert from weight range list below*) -

5 - 22 lbs - 0.023 fl oz (0.67 mL),

23 - 44 lbs - 0.045 fl oz (1.34 mL),

45 - 88 lbs - 0.091 fl oz (2.68 mL),

89 - 132 lbs - 0.136 fl oz (4.02 mL)

Contains Fipronil 9.80%, (S)-Methoprene 8.80%, Pyriproxyfen (Nylar[®]) 0.25%

KEEP OUT OF REACH OF CHILDREN

CAUTION

Read accompanying label before use EPA Reg. No.

2596-178

EPA Est. No. 2596-OH-1

{Lot number to appear on applicator tube}

(A cat prohibition icon will appear on the applicator tube and/or the immediate container for the applicator tube itself.)

{OPTIONAL LABEL TEXT}

{Adult Fleas}

Kills [Adult] Fleas [for 1 month]

Kills Fleas for 1 month [on dogs and puppies 8 weeks and older weighing 5-22 lbs [23-44 lbs][45-88 lbs][89-132 lbs]]

Kills Fleas that may transmit tapeworm for 1 month

Kills Fleas that may transmit tapeworm for 1 month [on dogs and puppies 8 weeks and older weighing 5-22 lbs [23-44 lbs][45-88 lbs][89-132 lbs]]

Kills fleas that [which] may cause flea allergy dermatitis for 1 month

Kills fleas that may cause flea allergy dermatitis for 1 month on dogs and puppies 8 weeks and older weighing 5-22 lbs [23-44 lbs][45-88 lbs][89-132 lbs]

Kills fleas that may cause flea allergy dermatitis and flea bite anemia for 1 month

Kills fleas that may cause flea allergy dermatitis and flea bite anemia for 1 month [on dogs and puppies 8 weeks and older weighing 5-22 lbs [23-44 lbs][45-88 lbs][89-132 lbs]]

Kills fleas that may cause flea bite anemia for 1 month

Kills fleas that may cause flea bite anemia for 1 month [on dogs and puppies 8 weeks and older weighing 5-22 lbs [23-44 lbs][45-88 lbs][89-132 lbs]]

Kills newly emerged adult fleas before they lay eggs

Controls existing flea infestations on the dog

Effective flea treatment

Long lasting flea control for 1 month

Fast and Effective flea control

{Flea Eggs}

Kills Flea Eggs [and Flea Larvae] for 1 month

Prevents Flea Eggs from hatching

Kills flea eggs on dogs 8 weeks and older weighing 5-22 lbs [23-44 lbs][45-88 lbs][89-132 lbs]

Kills flea eggs on dogs & puppies 8 weeks and older weighing 5-22 lbs [23-44 lbs][45-88 lbs][89-132 lbs]

Kills flea eggs on puppies 8 weeks and older weighing 5-22 lbs [23-44 lbs][45-88 lbs][89-132 lbs]

Regular use of *{Alternate Brand Name}* on your dog may reduce flea infestations in the home.

For best results, use *{Alternate Brand Name}* as part of a comprehensive flea treatment plan, which includes coordinated treatment of the home, yard and dog.

{Ticks}

Kills Ticks for 1 month

Kills [all stages of] Brown Dog Ticks, American Dog Ticks, Lone Star Ticks and Deer Ticks for 1 month

Kills all stages of Deer Ticks [which may transmit Lyme disease], Brown Dog Ticks, American Dog Ticks, and Lone Star Ticks

Kills Deer Ticks for 1 month

Kills Deer Ticks for 1 month [on dogs and puppies 8 weeks and older weighing 5-22 lbs [23-44 lbs] [45-88 lbs] [89-132 lbs]]

Kills all stages of Deer Ticks for 1 month

Kills all stages of Deer Ticks for 1 month [on dogs and puppies 8 weeks and older weighing 5-22 lbs [23-44 lbs] [45-88 lbs] [89-132 lbs]]

Kills Deer Ticks that may-transmit Lyme disease for 1 month

Kills Deer Ticks that may transmit Lyme disease for 1 month [on dogs and puppies 8 weeks and older weighing 5-22 lbs [23-44 lbs] [45-88 lbs] [89-132 lbs]]

Kills all stages of Deer Ticks that may transmit Lyme disease for 1 month

Kills all stages of Deer Ticks that may transmit Lyme disease for 1 month [on dogs and puppies 8 weeks and older weighing 5-22 lbs [23-44 lbs][45-88 lbs][89-132 lbs]]

Provides effective tick control

Kills all biting stages of ticks

Kills adult [brown dog] [deer] ticks, nymphs and larvae

Kills Ticks including those that may transmit Lyme disease

Kills fleas, [kills] flea eggs, [kills] flea larvae and [kills] ticks [including those that may transmit Lyme disease]

{Lice- & Mange}

Helps [to] control chewing lice infestations

Helps [to] control infestations with chewing lice

{Multiple}

Kills Fleas, [Kills] Ticks, [Kills] Flea eggs, [Kills] Flea larvae [Kills] Chewing Lice through contact for 1 month

Kills Fleas, Ticks, Flea eggs through contact for 1 month

Kills [Adult] Fleas, [Ticks], Flea eggs[,] [and] Flea larvae for 1 month

Kills Fleas, Ticks, Flea eggs, and Flea larvae through contact for 1 month

Kills Fleas, Ticks, Flea eggs, Flea larvae for 1 month

Kills Fleas, Ticks, Flea eggs, Flea larvae through contact for 1 month

Kills Fleas, Ticks, Flea eggs, Chewing lice for 1 month

Kills Fleas, Ticks, Flea eggs, Chewing lice through contact for 1 month

Kills Fleas, Ticks, Flea eggs, Flea larvae, and Chewing lice through contact for 1 month

Kills Fleas, Ticks, Flea eggs, and Flea larvae [after contact] for 1 month

Kills Fleas, Ticks, Flea eggs, after contact for 1 month

Long lasting flea, flea egg and tick control for 1 month

Kills Fleas, Flea eggs and larvae, ticks and chewing lice for 1 month

Prevents development of all flea stages

Kills Flea Eggs and Larvae

Kills Fleas, Brown Dog Ticks, Deer Ticks, Flea eggs, Flea larvae for 1 month

Kills Fleas, Brown Dog Ticks, Deer Ticks, Flea eggs, [after contact] for 1 month

Controls Flea and Tick infestations [on dogs] for 1 month

Provides effective and convenient treatment and control of fleas, ticks and chewing lice [on dogs and puppies 8 weeks and older weighing 5-22 lbs [23-44 lbs][45-88 lbs][89-132 lbs]]

Provides effective flea and tick control

Provides effective long lasting flea and tick control for 1 month

Helps prevent re-infestation of fleas and ticks for 1 month

Helps prevent flea and tick re-infestation for 1 month

Kills flea eggs and flea larvae to help prevent future re-infestations

Kills all stages of the flea life cycle

Breaks the flea life cycle

Prevents all flea stages [eggs, larvae, pupae] from developing

Controls flea and tick infestations on dogs

Once-a month Flea and Tick Prevention [Treatment] [Control] [Solution]

Monthly Flea and Tick Prevention [Treatment] [Control] [Solution]

Prevents flea eggs from developing into biting adults in the home for 1 month

Prevents flea eggs from developing into biting adults for 1 month

Stays on and doesn't rub off

Kills fleas for 1 month

Controls and prevents flea infestations on dogs

Prevents flea re-infestation

Prevents and controls flea re-infestation[s]

Dual insect growth regulator [(IGR)] prevents flea re-infestation

Contains two ingredients to prevent flea infestations

Control fleas

Long lasting for 1 month

Long-lasting for 1 month

Effective and convenient topical treatment

Kills fleas [and ticks] through [after] contact

[With] patented applicator

Waterproof

Effective after bathing

Effective after exposure to water

Easy spot on topical applicator

Do not reapply product for 1 month

Long lasting protection [control] for 1 month

Long lasting waterproof protection for 1 month

Long lasting effective convenient flea [tick] [flea and tick] protection for 1 month

{Alternate Brand Name} remains effective for one month, even after exposure to sunlight.

{Alternate Brand Name} remains effective even 48 hours after bathing or water immersion.

Convenient to use

Contains Fipronil and the insect growth regulators [(IGRs)] (S)-Methoprene and Pyriproxyfen [Nylar[®]].

{Alternate Brand Name} effectively targets all stages of fleas. Fipronil collects in the oils of the skin and hair follicles, and continues to be released from hair follicles onto the skin and coat, resulting in 1 month of long-lasting activity against fleas, ticks and chewing lice.

[Also] Contains a second insect growth regulator [(IGR)], Pyriproxyfen [, Nylar[®]]

[Also] Contains a third active ingredient, Pyriproxyfen [Nylar[®]]

Triple Active Formula [with] one adulticide [and] two [insect growth regulators] [(IGRs)]

Triple Action Formula [that] [•] Kills fleas [•] Kills flea eggs and flea larvae [•] Kills ticks including those that may transmit Lyme disease

Triple Action Formula [that is] Long lasting (for 1 month) Waterproof

Consult your veterinarian before use on breeding, pregnant and lactating bitches

{Alternate Brand Name} is approved for use on breeding, pregnant, and lactating bitches and puppies 8 weeks and older weighing 5-22 lbs [23-44 lbs][45-88 lbs][89-132 lbs]

Only for dogs and puppies 8 weeks and older weighing 5-22 lbs [23-44 lbs][45-88 lbs][89-132 lbs]

Formulated for dogs and puppies 8 weeks and older weighing weighing 5-22 lbs [23-44 lbs][45-88 lbs][89-132 lbs]

{NON-PESTICIDE RELATED CLAIMS AND OTHER OPTIONAL TEXT}

1st dose, 2nd dose, 3rd dose, 4th dose, 5th dose, 6th dose

First month, second month, third month, fourth month, fifth month, sixth month

[Value Pack $x + y = z$ Monthly Treatments]

[Bonus Pack $x + y = z$ Monthly eatments]

[Club Pack $x + y = z$ Monthly Treatments]

{ $x = 1, 3, \text{ or } 6$ }

{ $y = 1 \text{ or } 2$ }

{ $z = x + y$ }

1 month supply

3 month supply = 3 once-a-month doses

6 month supply = 6 once-a-month doses

1 [monthly] treatment

3 [monthly] treatment[s] = 3 once-a-month treatments

6 [monthly] treatment[s] = 1 once-a-month treatment

1 [monthly] dose

3 [monthly] doses = 3 once-a-month doses

6 [monthly] doses = 6 once-a-month doses

Apply monthly

Convenient [easy to use] applicator tube

[3] Pro-cision Flo® Applicator tube[s] [included]

Pro-cision Flo® Applicator tube

Featuring Pro-cision Flo® Applicator tube [for easy application]

Direct to [your dog's] skin

Easy [simple] to use [handle] [apply]

Made in the U.S.A.

After application, the treated area may appear [wet] [oily] [wet or oily]for up to 24 hours

You may bathe your dog 48 hours after application

{The following optional claims will only be used for a single applicator tube}:

[Single Dose Package] [Single Unit Package] [Individual Unit]

{The following optional claim will only be used to label single-dose, single applicator tube packages that are offered as promotional items to animal shelters and other organizations that have partnered with The Hartz Mountain Corporation}:

Not For Sale

To help remind you when you last applied treatment, simply write in the date when each dose is applied:

First Dose [Application] _____

Second Dose [Application] _ _____

Third Dose[Application] _____

Fourth Dose [Application] _____

Fifth Dose [Application] _____

Sixth Dose [Application] _____

To ensure continued protection of your dogs, use these stickers as a reminder to apply and re-purchase {Alternate Brand Name}

After treating your dog for the first time, peel off the sticker and place on your calendar that day.
Place the remaining stickers on your calendar as a reminder to apply {Alternate Brand Name} monthly.

Calendar [Reminder] Stickers

Don't forget to re-purchase

6 months use all 6 stickers

3 months [use all 3 stickers]

[Individual stickers] Apply {Alternate Brand Name}

[Individual sticker] Re-purchase {Alternate Brand Name}

Use these calendar stickers as a reminder for when to reapply [apply]

First [1st] Month {Alternate Brand Name}

[Reapply] Second [2nd] Month [{Alternate Brand Name}]

[Reapply] Third [3rd] Month [{Alternate Brand Name}] [Time to Re-purchase]

[Reapply] Fourth [4th] Month [{Alternate Brand Name}]

[Reapply] Fifth [5th] Month [{Alternate Brand Name}]

[Reapply] Sixth [6th] Month [{Alternate Brand Name}] [Time to Re-purchase]

Questions?

Contact your veterinarian or call our technical experts at [1-800-275-1414] [1-XXX-XXX-XXXX], [twenty four] [24] hours per day, [seven] [7] days per week.

Consult veterinarian before use.



Hartz® and other trademarks are trademarks of The Hartz Mountain Corporation.

Made by The Hartz Mountain Corporation, 200 Plaza Drive, Secaucus, NJ 07094 [U.S.A.] [Nylar® - Registered Trademark of McLaughlin Gormley King Company]

EPA Reg. No. 2596-178

EPA Est. No. 2596-OH-1

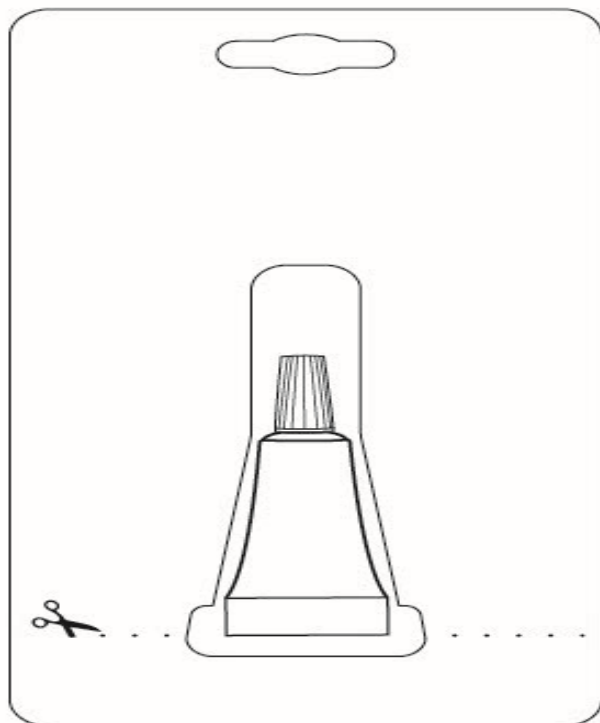
{**Note to Reviewer:** The following optional images were added to the February 24, 2025 EPA Label.}



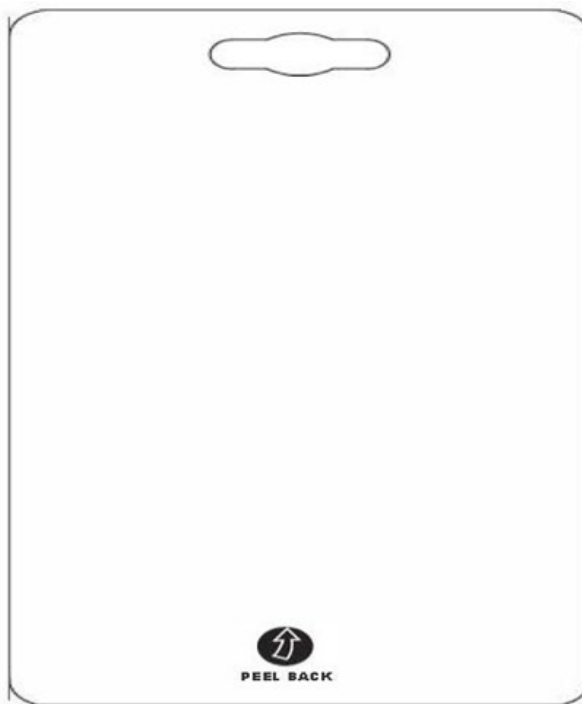
Color strip on bottom of tube will change depending on size of dog

CRP BLISTER ILLUSTRATIONS – SINGLE BLISTER

*{Note to Reviewer: Only CRP configurations, including the corresponding tubes which were tested and approved, will be used for this product. **Opening Instructions for Single Blister:** A dashed line will be printed on the back of the blister package, accompanied by a scissor symbol indicating where to cut the blister package. The back of the blister package will be printed with an arrow with the words “PEEL BACK”, dictating where to peel in order to open the blister package.}*



FORMING SIDE OF PACKAGE

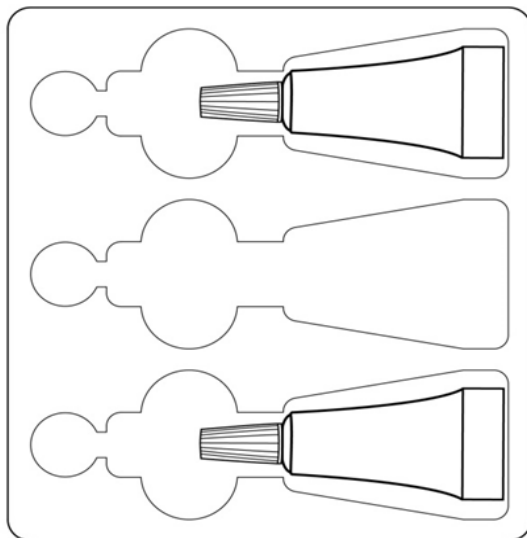


BACKING SIDE OF PACKAGE

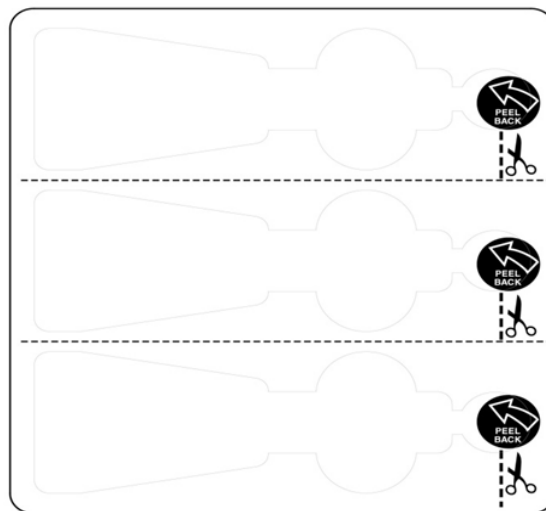
{CRP BLISTER ILLUSTRATIONS – 2, 3, 4, 6, AND 8 TUBE BLISTER PACK}

{Note to Reviewer: Opening Instruction for 2, 3, 4, 6 and 8 tube CRP Blister: A dashed line will be printed on the back of the blister package, accompanied by a scissor symbol indicating where to cut the blister package. The back of the blister package will be printed with an arrow with the words “PEEL BACK”, dictating where to peel in order to open the blister package.}

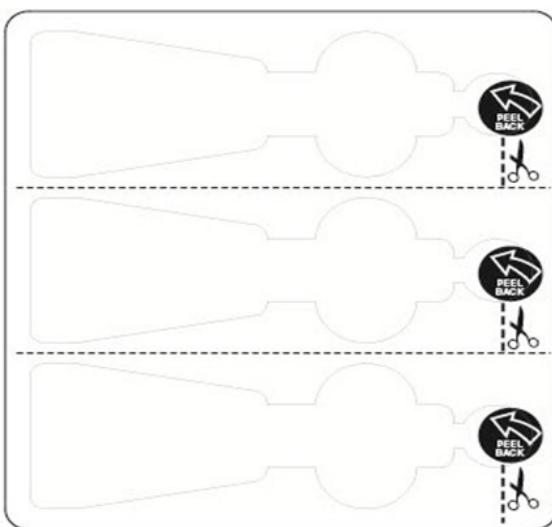
{The following SAUE graphic demonstrating dotted line with scissors icon and arrow to peel back, will appear on the 2, 3, 4, 6, and 8 tube CRP blister pack, with blister pack indicating the following package configurations: 1 tube single blister, 2 tubes single blister, 3 tubes single blister, 4 tubes single blister, 6 tubes packaged as 2 blisters, each containing 3 tubes, 8 tubes packaged as 2 blisters, each containing 4 tubes}:



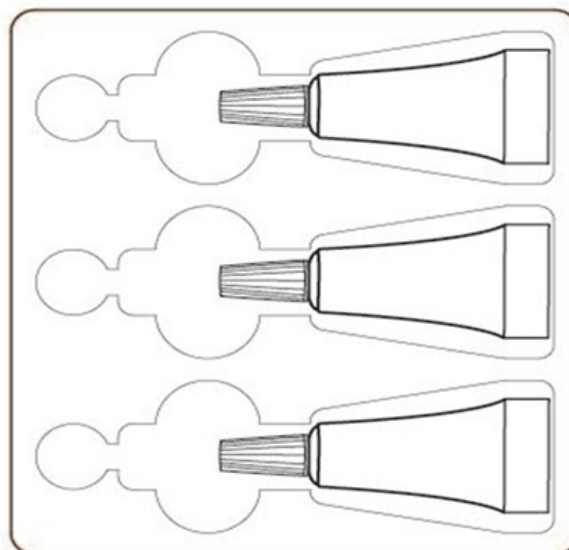
FORMING SIDE OF PACKAGE



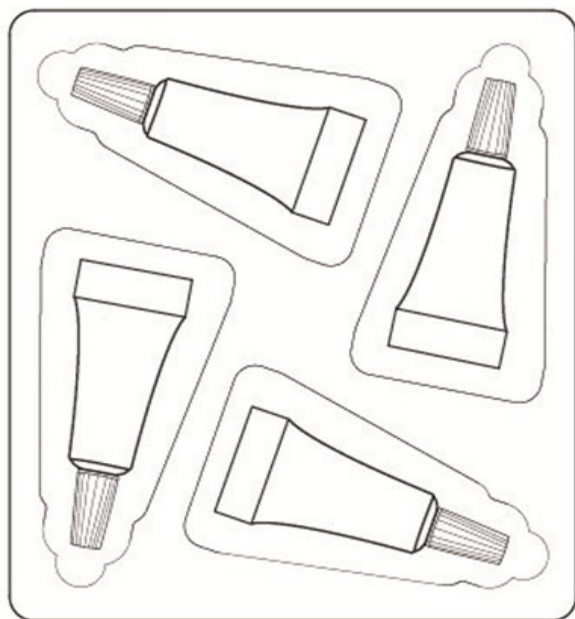
BACKING SIDE OF PACKAGE



BACKING SIDE OF PACKAGE



FORMING SIDE OF PACKAGE



FORMING SIDE OF PACKAGE

{BLISTER TEXT}

{Note to Reviewer: When CRP strip of 2 or 3 blister pack with non-CRP tube is used to produce packages containing 1, 2, 3, 4, 6, or 8 tubes, text will appear on each blister that contains a tube.}

{Alternate Brand Name}

ONLY for use on Cats 8 weeks and older weighing 1.5 lbs or more

Contains 0.017 fl. oz. (0.5 mL)

Lot Code:

EPA Reg. No. 2596-166

EPA Est. No. 2596-XX-X

ACTIVE INGREDIENTS:

Fipronil.....9.80%

(S)-Methoprene....11.80%

Keep Out of Reach of Children

CAUTION

Read accompanying label before use

{ALTERNATE BRAND NAMES}

{Primary Brand Name not to be included on any Product Labels. The word Dog will be included in all Alternate Brand Names and be at least 40 % of the size of the largest letter in the Alternate Brand Name. Alternate Brand Names are listed in alphabetical order for ease of review and reference.}

FieldForce Pro™ for Dogs [&] [and Puppies]
FieldForce Pro™ Triple Action Topical Solution for Dogs [&] [and Puppies]
FieldForce Pro™ Triple Action Topical Treatment for Dogs [&] [and Puppies]
First Defense Pro™ for Dogs [&] [and Puppies]
First Defense Pro™ Triple Action Topical Solution for Dogs [&] [and Puppies]
First Defense Pro™ Triple Action Topical Treatment for Dogs [&] [and Puppies]
First Defense Pro™ Triple Active Topical Solution for Dogs [&] [and Puppies]
First Defense Pro™ Triple Active Topical Treatment for Dogs [&] [and Puppies]
Hartz® FieldForce Pro™ for Dogs [&] [and Puppies] Hartz® First Defense Pro™ for Dogs [&] [and Puppies]
Hartz® FieldForce Pro™ Triple Action Topical Solution for Dogs [&] [and Puppies]
Hartz® First Defense Pro™ Triple Action Topical Solution for Dogs [&] [and Puppies]
Hartz® First Defense Pro™ Triple Active Topical Solution for Dogs [&] [and Puppies]
Hartz® Pro Force Pro™ Triple Action Topical Treatment for Dogs [&] [and Puppies]
Hartz® FieldForce Pro™ Triple Action Topical Treatment for Dogs [&] [and Puppies]
Hartz® First Defense Pro™ Triple Action Topical Treatment for Dogs [&] [and Puppies]
Hartz® First Defense Pro™ Triple Active Topical Treatment for Dogs [&] [and Puppies]
Hartz® Pro Force™ for Dogs [&] [and Puppies]
Hartz® Pro Force™ Triple Action Topical Solution for Dogs [&] [and Puppies]