



U.S. ENVIRONMENTAL PROTECTION AGENCY
 Office of Pesticide Programs
 Registration Division (7505P)
 1200 Pennsylvania Ave., N.W.
 Washington, D.C. 20460

EPA Reg. Number:

2596-167

Date of Issuance:

12/1/17

NOTICE OF PESTICIDE:

Registration
 Reregistration

(under FIFRA, as amended)

Term of Issuance:

Conditional, Time-Limited
 Expires: 12/01/2019

Name of Pesticide Product:

Hartz Reference #132

Name and Address of Registrant (include ZIP Code):

Joseph Conti
 The Hartz Mountain Corporation
 400 Plaza Drive
 Secaucus, NJ 07094-3688

Note: Changes in labeling differing in substance from that accepted in connection with this registration must be submitted to and accepted by the Registration Division prior to use of the label in commerce. In any correspondence on this product always refer to the above EPA registration number.

On the basis of information furnished by the registrant, the above named pesticide is hereby registered under the Federal Insecticide, Fungicide and Rodenticide Act.

Registration is in no way to be construed as an endorsement or recommendation of this product by the Agency. In order to protect health and the environment, the Administrator, on his motion, may at any time suspend or cancel the registration of a pesticide in accordance with the Act. The acceptance of any name in connection with the registration of a product under this Act is not to be construed as giving the registrant a right to exclusive use of the name or to its use if it has been covered by others.

This product is conditionally registered in accordance with FIFRA section 3(c)(7)(A). You must comply with the following conditions:

1. Submit and/or cite all data required for registration/reregistration/registration review of your product under FIFRA when the Agency requires all registrants of similar products to submit such data.

Signature of Approving Official:

Elizabeth Fertich, Product Manager 04
 IVB1, Registration Division (7505P)

Date:

12/1/17

2. The Agency has found your company to be in compliance with the terms and conditions for the subject product and is extending the two-year registration restriction. This registration is time-limited and expires 12/01/2019.

Please note that the product is still subject to all other previously required conditions of registration. Your company is required to adhere to the spot-on label mitigation, and to submit quarterly enhanced incident reports and quarterly sales information as stated in the initial registration notice dated 9/29/2011.

3. You are required to comply with the data requirements described in the DCI or EDSP Order identified below:

- a. Etofenprox GDCI-128965-1041
- b. Piperonyl Butoxide EDSP-067501-100
 EDSP-067501-95
 EDSP-067501-96
 EDSP-067501-99
 GDCI-067501-1063
- c. N-octyl bicycloheptene dicarboximide (MGK 264)
 EDSP-057001-250
 EDSP-057001-251
 GDCI-057001-1224

You must comply with all of the data requirements within the established deadlines. If you have questions about the Generic DCI or EDSP Order listed above, you may contact the Chemical Review Manager in the Pesticide Reevaluation Division:

<http://iaspub.epa.gov/apex/pesticides/f?p=chemicalsearch:1>

4. Submit one copy of the final printed label for the record before you release the product for shipment.

Should you wish to add/retain a reference to the company's website on your label, then please be aware that the website becomes labeling under the Federal Insecticide Fungicide and Rodenticide Act and is subject to review by the Agency. If the website is false or misleading, the product would be misbranded and unlawful to sell or distribute under FIFRA section 12(a)(1)(E). 40 CFR 156.10(a)(5) list examples of statements EPA may consider false or misleading. In addition, regardless of whether a website is referenced on your product's label, claims made on the website may not substantially differ from those claims approved through the registration process. Therefore, should the Agency find or if it is brought to our attention that a website contains false or misleading statements or claims substantially differing from the EPA approved registration, the website will be referred to the EPA's Office of Enforcement and Compliance.

If you fail to satisfy these data requirements, EPA will consider appropriate regulatory action including, among other things, cancellation under FIFRA section 6(e). Your release for shipment of the product constitutes acceptance of these conditions. A stamped copy of the label is enclosed for your records.

Please note that the record for this product currently contains the following CSFs:

- Basic CSF dated 01/05/2015
- Alternate CSF 1 dated 01/05/2015
- Alternate CSF 2 dated 01/05/2015
- Alternate CSF 3 dated 04/14/2015

If you have any questions, please contact Helen Hull-Sanders by phone at 703-347-0243, or via email at hull-sanders.helen@epa.gov.

Enclosure

{Note to reviewer: (Optional/alternate text in parentheses); Administrative text [brackets and italicized text has notes to reviewer that is not intended for printing]}

Hartz® Reference #132

{The Primary Brand name will not be used. Only an Alternate Brand name will be used and it will include the word "dog" in the product's name. In addition, the size of the word "dog" will be increased to at least 75% the height of the largest letter in the product brand name.}

{FRONT PANEL}

{Alternate Brand Names (list at end of document)}

{Note: For each brand as packaged, a large, clear picture of a dog in the weight range will be on the front panel of the label.}

ACTIVE INGREDIENTS:

Etofenprox	55.0%
*Piperonyl Butoxide (PBO).....	10.0%
**N-octyl bicycloheptene dicarboximide	1.0%
OTHER INGREDIENTS	34.0%
TOTAL	100.0%

*(butylcarbityl)(6-propylpiperonyl) ether and related compounds

**MGK®264, Insecticide Synergist

MGK® - Registered trademark of McLaughlin Gormley King Company

KEEP OUT OF REACH OF CHILDREN

CAUTION: See back panel for additional precautionary statements.

NET CONTENT: Contains [1][2][3][4][6][8] [applicators] [tubes], each __ fl. oz. (__ ml)

For use ONLY on Dogs and Puppies 12 weeks and older weighing:	Net Contents (Each [applicator] [tube])
5 to 14 lbs.	0.031 fl. oz. (0.91 ml)
15 to 30 lbs.	0.066 fl. oz. (1.95 ml)
31 to 60 lbs.	0.132 fl. oz. (3.90 ml)
61 to 150 lbs.	0.220 fl. oz. (6.50 ml)

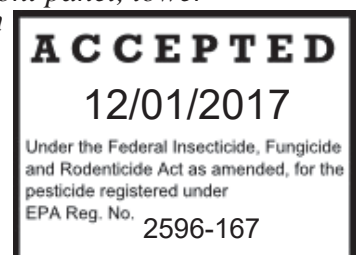
EPA Reg. No. 2596-167

EPA Est. No.

Hartz® and other trademarks are trademarks of The Hartz Mountain Corporation.

Made by The Hartz Mountain Corporation, 400 Plaza Drive, Secaucus, NJ 07094

{Cat Prohibition Icon: A cat prohibition icon will appear in a box on the front panel, lower right corner. Icon is 1.5 cm x 1.5 cm black image on a yellow background.}



{Note to reviewer: (Optional/alternate text in parentheses); Administrative text [brackets and italicized text has notes to reviewer that is not intended for printing]}

{BACK PANEL}

PRECAUTIONARY STATEMENTS

HAZARDS TO HUMANS

CAUTION: Causes moderate eye irritation. Avoid contact with eyes, skin or clothing. Wash thoroughly with soap and water after handling and before eating, drinking, chewing gum or using tobacco. Remove and wash contaminated clothing before reuse.

HAZARDS TO DOMESTIC ANIMALS. FOR EXTERNAL USE ONLY.

DO NOT USE ON OTHER ANIMALS. Do not use on dogs or puppies less than 12 weeks old or weighing less than [5lbs] [15 lbs.] [31 lbs.] [61 lbs.]. Do not use this product on debilitated, aged, medicated, pregnant or nursing animals or on animals known to be sensitive to pesticide products without first consulting a veterinarian. Sensitivity, such as slight transitory redness of the skin at the site of application, may occur after using ANY pesticide product for pets. If signs of sensitivity occur, bathe your pet with mild soap, rinse with large amounts of water, and consult a veterinarian immediately. This product is not a substitute for prescribed heartworm preventative.

ENVIRONMENTAL HAZARDS

This product is toxic to fish. This pesticide is extremely toxic to aquatic organisms, including fish and invertebrates. Do not add directly to water. Do not contaminate water when disposing of product or packaging.

FIRST AID

If in eyes

- Hold eye open and rinse slowly and gently with water for 15-20 minutes.
- Remove contact lenses, if present, after the first 5 minutes, then continue rinsing eye.
- Call a poison control center or doctor for treatment advice.

HOT LINE NUMBER: Have the product container or label with you when calling a poison control center, doctor or veterinarian, or going for treatment. For additional information on this pesticide product (including health concerns, medical emergencies or pesticide incidents), you may call 1-800-275-1414.

DIRECTIONS FOR USE

It is a violation of Federal law to use this product in a manner inconsistent with its labeling.
IMPORTANT! READ ENTIRE LABEL BEFORE EACH USE

RESTRICTIONS

FOR USE ONLY ON DOGS OR ON PUPPIES 12 WEEKS OF AGE OR OLDER WEIGHING MORE THAN [5 LBS] [15 lbs.] [31 lbs.] [61 lbs.].

DO NOT ALLOW YOUR DOG/PUPPY TO INGEST THIS PRODUCT.

DO NOT APPLY MORE THAN ONE [APPLICATOR] [TUBE] PER TREATMENT.

DO NOT HAVE CONTACT WITH OR ALLOW CHILDREN TO HAVE CONTACT WITH TREATED AREA UNTIL COMPLETELY DRY.

{Note to reviewer: (Optional/alternate text in parentheses); Administrative text [brackets and italicized text has notes to reviewer that is not intended for printing]}

DO NOT APPLY MORE THAN ONE [APPLICATOR] [TUBE] PER TREATMENT FOR ONE DOG REGARDLESS OF DOG'S WEIGHT.

DO NOT ALLOW CHILDREN TO APPLY PRODUCT

DO NOT USE ON CATS OR ANIMALS OTHER THAN DOGS..

DO NOT BATHE OR ALLOW YOUR DOG TO SWIM FOR 48 HRS AFTER APPLICATION.

{The application steps below may optionally be numbered or bulleted to clarify the order, depending on the final physical layout of the label}

[Option 1]

Remove one [applicator] [tube] from the package and hold in an upright position . Pull off cap. Turn the cap around and place on top of [applicator] [tube]. Simply press cap down to break the seal of the [applicator] [tube]. Remove cap carefully. Position the tip of the [applicator] [tube] on the dog's back between the shoulder blades. Use the tip of the [applicator] [tube] to part the dog's hair so that the product will be applied at skin level. Begin squeezing out the contents of the [applicator] [tube] to form a stripe as you move from the shoulder blades along the dog's back to the base of the tail. Repeat every month. Separate treated dog from other dogs and cats for 24 hours after treatment has been applied.

[Option 2a]

Remove one [applicator] [tube] from the package and hold in an upright position. Twist dispensing tip clockwise about ½ turn while pushing down to break the [applicator's] [tube's] seal. Do not remove the dispensing tip. Position the dispensing tip on the dog's back between the shoulder blades. Use the dispensing tip of the [applicator] [tube] to part the dog's hair so that the product will be applied at skin level. Begin squeezing out the contents of the [applicator] [tube] to form a stripe as you move from the shoulder blades along the dog's back to the base of the tail. Repeat every month. Separate treated dog from other dogs and cats for 24 hours after treatment has been applied.

[Option 2b]

Remove one [applicator] [tube] from the package and hold in an upright position. Twist dispensing tip clockwise about ½ turn while pushing down to break the [applicator's] [tube's] seal. Do not remove the dispensing tip. Position the dispensing tip on the dog's back between the shoulder blades. Use the dispensing tip of the [applicator] [tube] to part the dog's hair so that the product will be applied at skin level. Begin squeezing out the contents of the [applicator] [tube] to form a stripe as you move from the shoulder blades along the dog's back to the base of the tail. Repeat every month. Separate treated dog from other dogs and cats for 24 hours after treatment has been applied.

[Option 3]

Remove one [applicator] [tube] from the package and hold in an upright position. Pull off cap. Turn the cap around and place on top of [applicator] [tube]. Simply press cap down to break the seal of the [applicator] [tube]. Remove cap carefully. Position the tip of the [applicator] [tube]

{Note to reviewer: (Optional/alternate text in parentheses); Administrative text [brackets and italicized text has notes to reviewer that is not intended for printing]}

on the dog's back at the base of the dog's tail. Use the tip of the tube to part the dog's hair so that the product will be applied at skin level. Begin squeezing out the contents of the [applicator] [tube] to form a stripe as you move from the base of the tail along the dog's back to the shoulder blades. Repeat every month. Separate treated dog from other dogs and cats for 24 hours after treatment has been applied.

[Option 4]

Remove one [applicator] [tube] from the package and hold in an upright position. Twist dispensing tip clockwise about ½ turn while pushing down to break the [applicator's] [tube's] seal. Do not remove the dispensing tip. Position the dispensing tip on the dog's back at the base of the dog's tail. Use the dispensing tip of the [applicator] [tube] to part the dog's hair so that the product will be applied at skin level. Begin squeezing out the contents of the [applicator] [tube] to form a stripe as you move from the base of the tail along the dog's back to the shoulder blades. Repeat every month. Separate treated dog from other dogs and cats for 24 hours after treatment has been applied.

[A Side Effect box will be located on the back panel, directly above the Cat Fatality Box]

Side Effects: Monitor your dog after application. Side effects, although very rare, may include signs of skin irritation such as redness, scratching, or other signs of discomfort. Gastrointestinal signs such as vomiting or diarrhea have also been reported. If these or other side effects such as lethargy occur, consult your veterinarian or call 1-800-275-1414.

{Cat Warning Fatality Box: A cat prohibition icon and warning text in a box will appear on the back panel, lower right corner. Icon is 1.5 cm x 1.5 cm black image on a yellow background. The following text will be below or adjacent to the icon.}



DO NOT USE ON CATS. Keep cats away from treated dogs for 24 hours. If applied to a cat or ingested by a cat, contact your veterinarian.

STORAGE AND DISPOSAL

PESTICIDE STORAGE: Keep this product in its tightly closed original container, when not in use. Store in a cool, dry preferably locked area that is inaccessible to children and animals.

PESTICIDE DISPOSAL: Wastes resulting from the use of this product may be disposed of on site or at an approved waste disposal facility.

CONTAINER HANDLING: Non-refillable container. Do not reuse or refill container. *If empty:* Offer for recycling, if available. *If partly filled:* Call your local solid waste agency for disposal instructions. Never place unused product down any indoor or outdoor drain.

For more information call our flea and tick experts at 1-800-275-1414 weekdays, 9 am – 5 pm

{Note to reviewer: (Optional/alternate text in parentheses); Administrative text [brackets and italicized text has notes to reviewer that is not intended for printing]}

E.S.T.

[INDIVIDUAL TUBE TEXT]

Insert Alternate Brand Name

[Product name followed by weight range and age limits of dog for which tube is intended]

{A second weight class designation may be printed on the tube}

[For use only on dogs and puppies 12 weeks and older weighting 5 to 14lbs]

[For use only on dogs and puppies 12 weeks and older weighting 15 to 30lbs]

[For use only on dogs and puppies 12 weeks and older weighting 31 to 60lbs]

[For use only on dogs and puppies 12 weeks and older weighting 61 to 150lbs]

[Active Ingredients:]

Etofenprox 55.0%, PBO10.0%, MGK 264 1.0%

Keep Out of Reach of Children

Caution

For External Use Only

Read accompanying label before each use

[Net Content]

5 to 14 lbs.	0.031 fl. oz. (0.91 ml)
15 to 30 lbs.	0.066 fl. oz. (1.95 ml)
31 to 60 lbs.	0.132 fl. oz. (3.90 ml)
61 to 150 lbs.	0.220 fl. oz. (6.50 ml)

EPA Reg. No. 2596-167

EPA Est. No.

{Lot# on [applicator] [tube] crimp}

{Note: Cat Warning Icon: A cat prohibition icon will appear on the immediate container that holds the tube(s). Icon is 1.5 cm x 1.5 cm black image on a yellow background.}



[OPTIONAL/ALTERNATE LABEL TEXT]

Weighing 5 to 14 lbs. on dogs 12 weeks and older

Weighing 15 to 30 lbs. on dogs 12 weeks and older

Weighing 31 to 60 lbs. on dogs 12 weeks and older

Weighing 61 to 150 lbs. on dogs 12 weeks and older

Only (for) (Small) (Dogs) (&) Puppies 5-14 lbs.

{Note to reviewer: (Optional/alternate text in parentheses); Administrative text [brackets and italicized text has notes to reviewer that is not intended for printing]}

Only (for) (Medium) Dogs & Puppies 15-30 lbs.

Only (for) (Large) Dogs & Puppies 31-60 lbs.

Only (for) (Extra Large) Dogs & Puppies 60-150 lbs.

Kills [and] [&] [Repels] Mosquitoes, Prevent re-infestation(s) for (30 days) (1 month) (4 weeks)

Kills [and] [&] [Repels] Mosquitoes (for) (30 days) (1 month) (4 weeks)

Kills Mosquitoes (for) (30 days) (1 month) (4 weeks)

After the applied treatment has spread over the dog's body, this product will kill newly infesting fleas within 15 minutes.

Within 24 hours of application, this product will kill fleas by contact within 15 minutes.

When fully protected by full coverage of this product, infesting fleas will be killed within 15 minutes.

Kills Fleas (that may transmit tapeworm) (for) (30 days) (1 month) (4 weeks) (on dogs)

Kills fleas that may cause flea allergy dermatitis (and flea bite anemia) (for) (30 days) (1 month) (4 weeks) (on dogs)

Kills Ticks (for) (30 days) (1 month) (4 weeks)

Kills Brown Dog Ticks (for) (30 days) (1 month) (4 weeks)

Kills Deer Ticks (that may carry Lyme disease) (for) (30 days) (1 month) (4 weeks) (on dogs)

Kills all biting stages of ticks

Kills adult (brown dog) ticks, nymphs and larvae

Kills Fleas, (and Ticks)

Kills Fleas, Ticks (through contact) (for) (30 days) (1 month) (4 weeks)

Kills Fleas, Brown Dog Ticks, Deer Ticks (through contact) (for) (30 days) (1 month) (4 weeks)

Kills Fleas, Ticks, (after contact) (for) (30 days) (1 month) (4 weeks)

Kills Fleas, Brown Dog Ticks, Deer Ticks (after contact) (for) (30 days) (1 month) (4 weeks)

Repels Mosquitoes (for) (1 month) (4 weeks)

Repels Mosquitoes that may transmit West Nile virus (for) (1 month) (4 weeks) (on dogs)

Repels Mosquitoes (for) (1 month) (4 weeks) (on dogs)

Once-a month Flea and Tick (Prevention) (Treatment) (Control) (Solution)

Monthly Flea and Tick (Prevention) (Treatment) (Control) (Solution)

(30 day) (1 month) (4 weeks) Flea and Tick (Prevention) (Treatment) (Control) (Solution)

Gentle protection for dogs (and puppies)

Stays on and doesn't rub off

Spreads with dog's natural skin oils

Within 24 hours of application, this product will start killing fleas within 15 minutes

Within 24 hours of application, this product will start killing fleas within 15 minutes and lasts for (30 days) (1 month) (4 weeks)

Within 24 hours of application, this product will stop fleas from biting within 15 minutes

Within 24 hours of application, this product will stop fleas from biting within 15 minutes and lasts for (30 days) (1 month) (4 weeks)

Kills fleas for (30 days) (1 month) (4 weeks)

Rapidly eliminates fleas

Fast acting within 12 hours (of application)

{Note to reviewer: (Optional/alternate text in parentheses); Administrative text [brackets and italicized text has notes to reviewer that is not intended for printing]}

Long lasting [4 weeks] (1 month) (30 days)
Effective and convenient topical treatment
Kills fleas (and ticks) through (after) contact
(With) patented [applicator] [tube]
(With) patent pending [applicator] [tube]
Easy spot on topical [applicator] [tube]
Kills 95% of fleas in 8 hours (of initial application)
Kills 99% of fleas in 12 hours (of initial application)
Kills fleas before they have a chance to lay eggs

New (Formula) (*claim to be removed after 6 months*)

[NON-PESTICIDE RELATED CLAIMS AND OTHER OPTIONAL TEXT]

(1st treatment) (2nd treatment) (Xth treatment)
First month, second month, third month (Xth month)
X-pack
X-tubes
Value pack
Bonus Pack
Club Pack
[Value Pack x + y = z Monthly Treatments]
[Bonus Pack x + y = z Monthly Treatments]
[Club Pack x + y = z Monthly Treatments]
{x=1, 2, 3, 4, 6, or 8}
{y= 1, 2}
{z= x+y}
X month supply
X monthly treatment(s)

[Six month limited claims with “Free” and “Bonus” type terms below]

Buy (1) (2) (3) (4) (6) (8) Get (1) (2) Free
(3)(4)(6)(8) Bonus Pack
Club Pack (4) (6) (8)
Value Pack
(1) (2) Tube(s) Free!
(30) (60) Day(s) of treatment- Free!
(1) (2) Applicator(s) Free!
Save Now!
Club Size
Value Size
Great Value
Better Value

Fragrance-free

{Note to reviewer: (Optional/alternate text in parentheses); Administrative text [brackets and italicized text has notes to reviewer that is not intended for printing]}

Unscented

Fresh (scent) (fragrance)

Powder (scent) (fragrance)

Pleasant (scent) (fragrance)

Spring Fresh Scent

Advanced Pro-Glide® Applicator

Convenient (easy to use) applicator

X Pro-cision Flo® Applicator(s)

X Pro-Glide™ Applicator(s)

(Now) (featuring the angled) (Pro-cision Flo® Applicator

(Pro-Glide™ Applicator) easily gets through dog's fur, for gentle on-skin application

(Now) (featuring the angled) (Pro-cision Flo® Applicator)

(Pro-Glide™ Applicator) quickly gets through dog's fur, for on-skin application

(Now) (featuring the angled) (Pro-cision Flo® Applicator)

(Now) (featuring the angled) (Pro-Glide™ Applicator) easily penetrates dog's fur, for gentle on-skin application

(Pro-Glide™ Applicator) quickly penetrates dog's fur, for on-skin application

Pro-Glide™ Applicator gently glides through the dog's fur

Pro-Glide™ Applicator easily gets through dog's fur to minimize (oily) residue

Pro-Glide™ Applicator easily penetrates dog's fur to minimize (oily) residue

Pro-Glide™ Applicator features rounded edges for gentle on-skin application

Pro-Glide™ Applicator glides smoothly through the dog's fur

Pro-Glide™ Applicator features an angled tip to help guide the application

Easy to use Pro-Glide™ Applicator

Direct to your dog's skin

Easy (simple) to use (handle) (apply)

(Featuring the) (with) EZC™ [applicator] [tube]

(Featuring the) (with) EZ2C™ [applicator] [tube]

(Featuring the) (with) EZView™ [applicator] [tube]

(Featuring the) (with) EZView™ [applicator] [tube]

(Featuring the) (with) Clearview™ [applicator][tube]

(Featuring the) (with) Clearview™ [applicator][tube]

(Clearview™) (EZC™) (EZ2C™) (EZView™) [applicator] [tube] (visually) ensures all product has been dispensed

(Clearview™) (EZC™) (EZ2C™) (EZView™) [applicator] [tube]give you the assurance all the product has been applied

After application, the treated area may appear wet (or) (oily) for up to 24 hours

You may bathe your dog 48 hours after application

MASTER LABEL

{Note to reviewer: (Optional/alternate text in parentheses); Administrative text [brackets and italicized text has notes to reviewer that is not intended for printing]}

To help remind you when you last applied treatment, simply write in the date when each dose is applied:

First Dose _____

Second Dose _____

Third Dose _____

Xth Dose _____

Hartz® and other trademarks are trademarks of The Hartz Mountain Corporation

[OPTIONAL MARKETING ICONS]



Adult Fleas



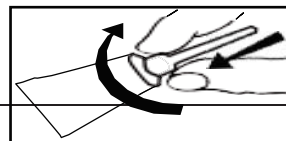
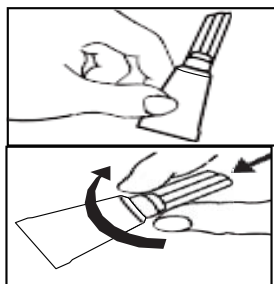
Tick Larvae and Nymphs



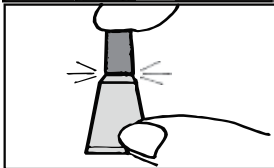
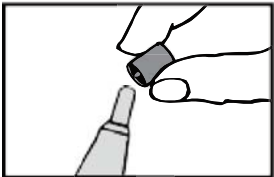
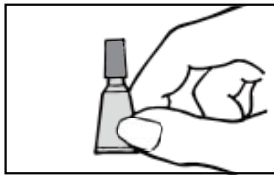
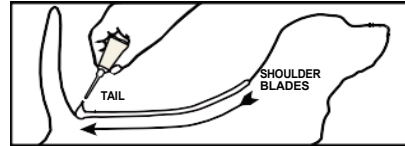
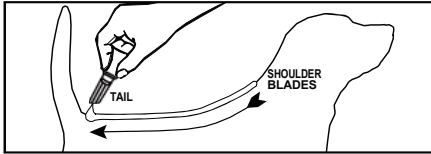
Adult Ticks



Tick Larvae and Nymphs



{Note to reviewer: (Optional/alternate text in parentheses); Administrative text [brackets and italicized text has notes to reviewer that is not intended for printing]}



[Additional Brand Names:]

Hartz® UltraGuard® Topical Flea & Tick Prevention [for Dogs [(&) (and) Puppies]
Hartz® UltraGuard® Topical Flea & Tick Treatment [for Dogs [(&) (and) Puppies]
Hartz® UltraGuard® Topical Flea & Tick Control [for Dogs [(&) (and) Puppies]
Hartz® UltraGuard® Topical Flea & Tick Solution [for Dogs [(&) (and) Puppies]

Hartz® Revo® Topical Flea & Tick Prevention [for Dogs [(&) (and) Puppies]
Hartz® Revo® Topical Flea & Tick Prevention [for Dogs [(&) (and) Puppies]
Hartz® Revo® Topical Flea & Tick Control [for Dogs [(&) (and) Puppies]
Hartz® Revo® Topical Flea & Tick Solution [for Dogs [(&) (and) Puppies]
Revo® Topical Flea & Tick Prevention [for Dogs [(&) (and) Puppies]
Revo® Topical Flea & Tick Treatment [for Dogs [(&) (and) Puppies]
Revo® Topical Flea & Tick Control [for Dogs [(&) (and) Puppies]

{Note to reviewer: (Optional/alternate text in parentheses); Administrative text [brackets and italicized text has notes to reviewer that is not intended for printing]}

Revo® Topical Flea & Tick Solution [for Dogs [(&) (and) Puppies]
Revo® Topical Drops [for Dogs [(&) (and) Puppies]
Hartz® Revo® Topical Drops [for Dogs [(&) (and) Puppies]

Hartz® Pro Force™ Topical Solution for Dogs (& Puppies)
Pro Force™ Topical Solution for Dogs (& Puppies)
Hartz® Pro Force™ Topical Solution for Dogs (& Puppies)
Pro Force™ Topical Solution for Dogs (& Puppies)

Hartz® FieldForce™ Topical Solution for Dogs (& Puppies)
FieldForce™ Topical Solution for Dogs (& Puppies)
Hartz® FieldForce™ Topical Solution for Dogs (& Puppies)
FieldForce™ Topical Solution for Dogs (& Puppies)

Hartz® First Defense™ Topical Solution for Dogs (& Puppies)
First Defense™ Topical Solution for Dogs (& Puppies)
Hartz® First Defense™ Topical Solution for Dogs (& Puppies)
First Defense™ Topical Solution for Dogs (& Puppies)

{Each of the above brands will be packaged in the weight classes designated below:}

For use **ONLY** on dogs 12 weeks and older, weighing 5 to 14 lbs.
For use **ONLY** on dogs 12 weeks and older, weighing 15 to 30 lbs.
For use **ONLY** on dogs 12 weeks and older, weighing 31 to 60 lbs.
For use **ONLY** on dogs 12 weeks and older, weighing 61 to 150 lbs.