



U.S. ENVIRONMENTAL PROTECTION AGENCY

Office of Pesticide Programs  
Registration Division (7505P)  
1200 Pennsylvania Ave., N.W.  
Washington, D.C. 20460

NOTICE OF PESTICIDE:

☒ Registration  
☐ Reregistration

(under FIFRA, as amended)

EPA Reg. Number:

2596-166

Date of Issuance:

3/10/25

Term of Issuance:

Conditional, Time-Limited  
Expires: 04/16/2027

Name of Pesticide Product:

Hartz Reference # 131

Name and Address of Registrant (include ZIP Code):

Joe Conti  
The Hartz Mountain Corporation  
200 Plaza Drive  
Secaucus, New Jersey 07094-3688

**Note:** Changes in labeling differing in substance from that accepted in connection with this registration must be submitted to and accepted by the Registration Division prior to use of the label in commerce. In any correspondence on this product always refer to the above EPA registration number.

On the basis of information furnished by the registrant, the above named pesticide is hereby registered under the Federal Insecticide, Fungicide and Rodenticide Act.

Registration is in no way to be construed as an endorsement or recommendation of this product by the Agency. In order to protect health and the environment, the Administrator, on his motion, may at any time suspend or cancel the registration of a pesticide in accordance with the Act. The acceptance of any name in connection with the registration of a product under this Act is not to be construed as giving the registrant a right to exclusive use of the name or to its use if it has been covered by others.

This product is conditionally registered in accordance with FIFRA section 3(c)(7)(A). You must comply with the following conditions:

1. Submit and/or cite all data required for registration/reregistration/registration review of your product under FIFRA when the Agency requires all registrants of similar products to submit such data.

Signature of Approving Official:

Hester Dingle, Acting Product Manager 04  
Invertebrate-Vertebrate Branch 1, Registration Division (7505P)

Date:

3/10/25

2. The Agency has found your company to be in compliance with the terms and conditions for the subject product and is extending the two-year registration restriction. This registration is time-limited and expires 04/16/2027.
3. Please note that the product is still subject to all other previously required conditions of registration. Your company is required to adhere to the spot-on label mitigation, and to submit quarterly enhanced incident reports and quarterly sales information as stated in the initial registration notice dated 07/09/2012.
4. Submit one copy of the final printed label for the record before you release the product for shipment.

Should you wish to add/retain a reference to the company's website on your label, then please be aware that the website becomes labeling under the Federal Insecticide Fungicide and Rodenticide Act and is subject to review by the Agency. If the website is false or misleading, the product would be misbranded and unlawful to sell or distribute under FIFRA section 12(a)(1)(E). 40 CFR 156.10(a)(5) list examples of statements EPA may consider false or misleading. In addition, regardless of whether a website is referenced on your product's label, claims made on the website may not substantially differ from those claims approved through the registration process. Therefore, should the Agency find or if it is brought to our attention that a website contains false or misleading statements or claims substantially differing from the EPA approved registration, the website will be referred to the EPA's Office of Enforcement and Compliance.

If you fail to satisfy these data requirements, EPA will consider appropriate regulatory action including, among other things, cancellation under FIFRA section 6(e). Your release for shipment of the product constitutes acceptance of these conditions. A stamped copy of the label is enclosed for your records.

Please note that the record for this product currently contains the following CSFs:

- Basic CSF dated 03/30/2017
- Alternate CSF 1 dated 03/30/2017
- Alternate CSF 2 dated 03/30/2017
- Alternate CSF 3 dated 05/15/2017

If you have any questions, you may contact Robert Mitchell at 202-566-2842 or via email at [mitchell.robert@epa.gov](mailto:mitchell.robert@epa.gov).

Enclosure

March 4, 2025

## Hartz® Reference # 131

**{Note to Reviewer:** Text inside [ ] denotes optional or alternate language; text inside { } denotes location of text on packaging, notes to reviewer, and text that will not be on final label; text inside ( ) appears on the label.}

*{Primary Brand Name not to be used on any product labels. The word Cat will be included in all Alternate Brand Names and be at least 40% of the size of the largest letter in the Alternate Brand Name. }*

*{Alternate Brand Names are listed at end of document.}*

### **{FRONT PANEL}**

*{Included on the front panel is a large, clear picture of a cat in the weight range for the product. Cat and/ or Kitten images can be found on page 20 of this EPA Label dated March 4, 2025.}*

#### **ACTIVE INGREDIENTS:**

Fipronil.....	9.80%
(S)-Methoprene.....	11.80%
<b>OTHER INGREDIENTS .....</b>	<b>78.40%</b>
<b>TOTAL .....</b>	<b>100.00%</b>

**ACCEPTED**

**03/10/2025**

Under the Federal Insecticide, Fungicide  
and Rodenticide Act as amended, for the  
pesticide registered under  
EPA Reg. No. 2596-166

#### **KEEP OUT OF REACH OF CHILDREN**

#### **CAUTION**

See back panel for First Aid and additional precautionary statements.

*{Note to Reviewer: A claim on the front panel of marketplace label will indicate to the consumer which pests this product treats.}*

#### **NET CONTENTS:**

*{For 1 tube package}*

*{The following table will be placed prominently in a box on the front panel.}*

<b>ONLY for use on Cats &amp; Kittens 8 weeks and older Weighing 1.5 lbs or more</b>	<b>0.017 fl oz (0.5 mL) [tubes]</b>
--	-------------------------------------

**{FRONT PANEL - continued}**

*{For 2 pack – Only CRP configurations that were tested and approved, using 2cc tubes, will be used for this product.}*

*{The following table will be placed prominently in a box on the front panel.}*

ONLY for use on Cats & Kittens 8 weeks and older Weighing 1.5 lbs or more	0.034 fl oz (1.0 mL), Contains 2 [-] [tubes, each] 0.017 fl oz (0.5 mL) [tubes]
---	--

*{For 3 pack - Only CRP configurations that were tested and approved, using 2cc tubes, will be used for this product.}*

*{The following table will be placed prominently in a box on the front panel.}*

ONLY for use on Cats & Kittens 8 weeks and older Weighing 1.5 lbs or more	0.051 fl oz (1.5 mL), Contains 3 [-] [tubes, each] 0.017 fl oz (0.5 mL) [tubes]
---	--

*{For 4 pack - Only CRP configurations that were tested and approved, using 2cc tubes, will be used for this product.}*

*{The following table will be placed prominently in a box on the front panel.}*

ONLY for use on Cats & Kittens 8 weeks and older, Weighing 1.5 lbs or more	0.068 fl oz (2.0 mL), Contains 4 [-] [tubes, each] 0.017 fl oz (0.5 mL) [tubes]
--	--

*{For 6 pack - Only CRP configurations that were tested and approved, using 2cc tubes, will be used for this product.}*

*{The following table will be placed prominently in a box on the front panel.}*

ONLY for use on Cats & Kittens 8 weeks and older, Weighing 1.5 lbs or more	0.102 fl oz (3.0 mL), Contains 6 [-] [tubes, each] 0.017 fl oz (0.5 mL) [tubes]
--	--

*{For 8 pack – Only CRP configurations that were tested and approved, using 2cc tubes, will be used for this product.}*

*{The following table will be placed prominently in a box on the front panel.}*

ONLY for use on Cats & Kittens 8 weeks and older, Weighing 1.5 lbs or more	0.136 fl oz (4.0 mL), Contains 8 [-] [tubes, each] 0.017 fl oz (0.5 mL) [tubes]
--	--

## **{BACK PANEL}**

### **PRECAUTIONARY STATEMENTS**

#### **HAZARDS TO HUMANS**

##### **CAUTION**

Harmful if swallowed. Causes eye irritation. Avoid contact with skin, eyes or clothing. Wash hands thoroughly with soap and water after handling and before eating, drinking, chewing gum, using tobacco or using the toilet.

#### **HAZARDS TO DOMESTIC ANIMALS.**

For external use only. Do not use on kittens under 8 weeks of age regardless of weight. Do not use on kittens weighing less than 1.5 lbs. Sensitivities may occur after using ANY pesticide product for cats. If signs of sensitivity occur, bathe your cat with mild soap and rinse with large amounts of water. If signs continue, consult a veterinarian immediately. Cats may experience some temporary irritation at the site of product application. Consult a veterinarian before using this product on medicated, debilitated or aged cats. Call 1-800- 275-1414 for 24-hour assistance.

### **PHYSICAL OR CHEMICAL HAZARDS**

**COMBUSTIBLE:** Do not use or store near heat or open flame.

#### **FIRST AID**

**IF SWALLOWED:** Call a poison control center or doctor immediately for treatment advice. Have person sip a glass of water if able to swallow. Do not induce vomiting unless told to do so by a poison control center or doctor. Do not give anything by mouth to an unconscious person.

**IF IN EYES:** Hold eye open and rinse slowly and gently with water for 15 - 20 minutes. Remove contact lenses, if present, after the first 5 minutes, then continue rinsing eye. Call a poison control center or doctor for treatment advice.

**IF ON SKIN OR CLOTHING:** Take off contaminated clothing. Rinse skin immediately with plenty of water for 15 – 20 minutes. .Call a poison control center or doctor for treatment advice.

**HOT LINE NUMBER:** Have the product container or label with you when calling a poison control center or doctor, or going for treatment. For additional information on this product [including health concerns, medical emergencies or pesticide incidents], you may call 1-800-275-1414, twenty- four [(24)] hours per day, seven [(7)] days per week.

## **{BACK PANEL - continued}**

### **DIRECTIONS FOR USE**

It is a violation of Federal Law to use this product in a manner inconsistent with its labeling. Do not allow children to apply product.

TO PREVENT HARM TO YOU AND YOUR CAT AND/OR KITTEN READ ENTIRE LABEL AND DIRECTIONS BEFORE EACH USE. FOLLOW ALL DIRECTIONS AND PRECAUTIONARY STATEMENTS CAREFULLY. USE ON CATS & KITTENS ONLY.

### **RESTRICTIONS:**

DO NOT APPLY TO CATS AND KITTENS UNDER 8 WEEKS OF AGE REGARDLESS OF WEIGHT.

DO NOT USE ON CATS AND KITTENS WEIGHING LESS THAN 1.5 LBS.

DO NOT EXCEED LISTED DOSAGE AMOUNT FOR CATS AND/OR KITTENS.

DO NOT ALLOW YOUR CAT AND/OR KITTEN TO INGEST THIS PRODUCT.

DO NOT USE ON RABBITS, DOGS, PUPPIES OR OTHER ANIMALS.

DO NOT REAPPLY {Alternate Brand Name} FOR 1 MONTH.

DO NOT DOUBLE-DOSE OR APPLY MORE THAN ONE TUBE PER TREATMENT FOR ONE CAT REGARDLESS OF THE CAT'S AND/OR KITTEN'S WEIGHT.

DO NOT ALLOW CATS AND/OR KITTENS TO GROOM EACH OTHER UNTIL PRODUCT HAS DRIED.

DO NOT BATHE CAT AND/OR KITTEN FOR 48 HOURS AFTER APPLICATION.

CAT AND/OR KITTEN MUST BE DRY AT TIME OF APPLICATION AND REMAIN DRY FOR 48 HOURS AFTER APPLICATION.

### **DIRECTIONS FOR USE {OPTION 1}**

*{Note to Reviewer: Only CRP configurations that were tested and approved, using 2cc tubes, will be used for this product.}*

*{Note to Reviewer: CRP-free tubes, which are not themselves CRP but are encased in a CRP blister: SAUE opening instructions apply to a long-tip tube and will not change in text or format on the final printed label from that used in testing. See separate section beginning on page 8 in this document, CRP BLISTER ILLUSTRATIONS.}*

To kill fleas, all stages of ticks [Brown Dog ticks, American Dog ticks, Lone Star ticks, [and] [&] Deer ticks [which may transmit Lyme disease], and chewing lice, apply to cats and [and] [&] kittens 8 weeks and older weighing 1.5 lbs or more as follows:

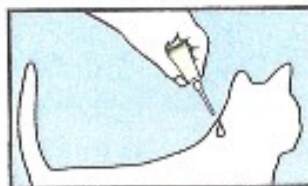
Cat must be dry at the time of the application and remain dry for 48 hours after application. Avoid contact with treated area until dry. The cat must be standing for the application.



1.



2.



3.

March 4, 2025

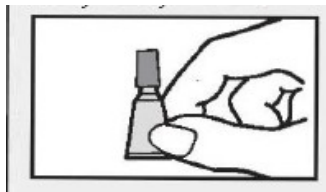
1. Remove one tube from the package and hold in an upright position pointed away from your face.
2. Twist dispensing tip clockwise about  $\frac{1}{2}$  turn while pushing down to break the tube's seal. Do not remove the dispensing tip.
3. Position the dispensing tip on the cat's back between the shoulder blades. Use the dispensing tip of the tube to part the cat's hair so that the product will be applied at skin level. Squeeze tube, applying entire contents in a single spot on the cat's skin. Separate treated cat from other dogs, cats, and other animals for 24 hours after treatment has been applied. You may bathe your cat 48 hours after application.
4. Repeat every month.

## DIRECTIONS FOR USE {OPTION 2}

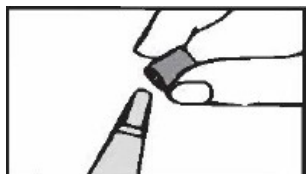
**{Note to Reviewer: Option 2 tube is only for use in CRP blister. For CRP strip of 4 blister pack or 3 blister pack with applicator tubes, and strip of 2 blister, which is strip of 3 blisters where the middle blister is empty. SAUE opening instructions are on the blister (CRP component) and will not change in text or format from that used in testing. See separate section beginning on page 8 in this document, entitled CRP BLISTER ILLUSTRATIONS. Whenever this package is used, the term "applicator tube" or "tube" can be used, but whichever term is used, that term will be used consistently throughout the label.}**

Cat must be dry at the time of the application and remain dry for 48 hours after application. Avoid contact with treated area until dry. The cat must be standing for the application.

1. Remove one tube from package and hold in an upright position pointed away from your face.



2. Pull off cap. Turn the cap around and place on top.



3. Simply press cap down to break the seal of the tube. Remove cap carefully.



March 4, 2025

4. Position the tip of the tube on the cat's back between the shoulder blades. Use the tip of the tube to part the cat's hair so that the product will be applied at skin level. Squeeze tube, applying entire contents in a single spot on the cat's skin. Separate treated cat from dogs, cats, and other animals for 24 hours after treatment has been applied.



5. Repeat every month.

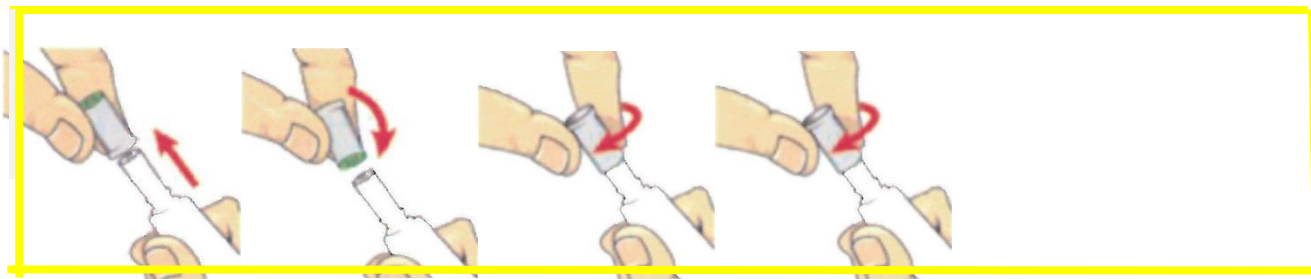
## DIRECTIONS FOR USE {OPTION 3}

### {DIRECTIONS FOR USE WITH SCREW-TOP CAP}

***{Note to Reviewer: Option 3 tube is a CRP tube and may be placed in a non-CRP blister but does not fit in the CRP blister tested. SAUE opening instructions apply to screw-top tube and will not change in text or format on the final printed label from that used in testing. . Whenever this package is used, the term "tube" will be used consistently throughout the label.}***

Cat must be dry at time of application and remain dry for 48 hours after application. Avoid contact with treated area until dry. The cat must be standing for the application.

Remove inner tray from carton. Firmly grasp one tube and pull away from tray. Hold tube firmly in one hand. With the other hand, push down firmly on the cap and turn counter clockwise (to the left). Continue twisting cap until it comes off the tube. Turn the cap around and place opposite end of cap back on tube. Twist cap to break seal. Remove cap from tube.



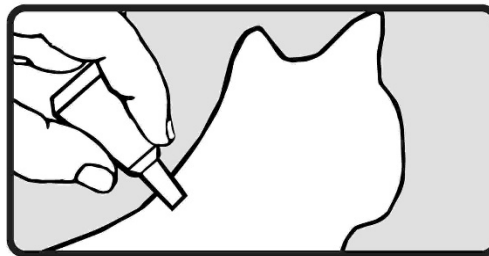
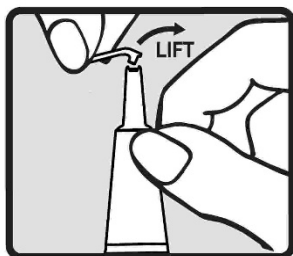
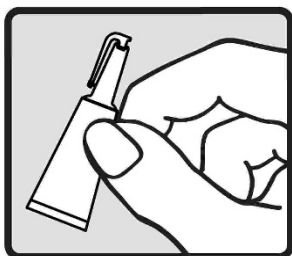
You may bathe your cat 48 hours after application.

Repeat every month.

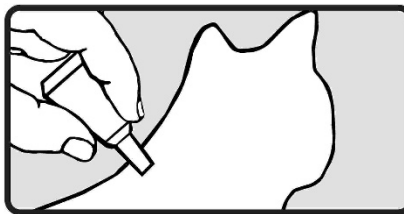
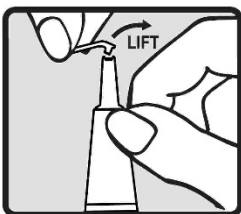
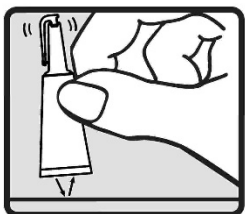
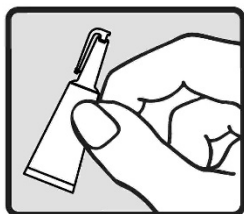


## DIRECTIONS FOR USE {OPTION 4}

1. Cat must be dry at time of application and remain dry for 48 hours after application.
2. Remove one applicator tube [tube] from the package and hold in an upright position [at the neck of the tube] pointed away from face.
3. Tap applicator tube [tube] to settle liquid into the sealed end of the tube.
4. Lift the handle [lever] at the neck of the tube in an upward motion to separate from [the body of] the tube.
5. Prior to application of the product, gently lift the cat's or kitten's hair [coat] on the back of the neck at the base of the skull.
6. Position the tip of the tube on the cat's exposed skin and squeeze out the entire contents of the applicator tube [tube] onto the cat's skin. Do not bathe cat within the first 24 hours after Spot On [squeeze on] [product] *has been applied*. Households with more than one cat should prevent cats from grooming each other until solution has dried.
7. Repeat application once every month.

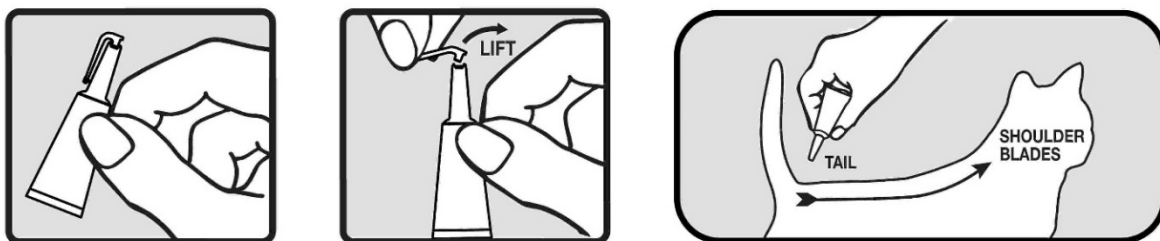


{Note to Reviewer: Below images refer to step 3, tapping applicator.}

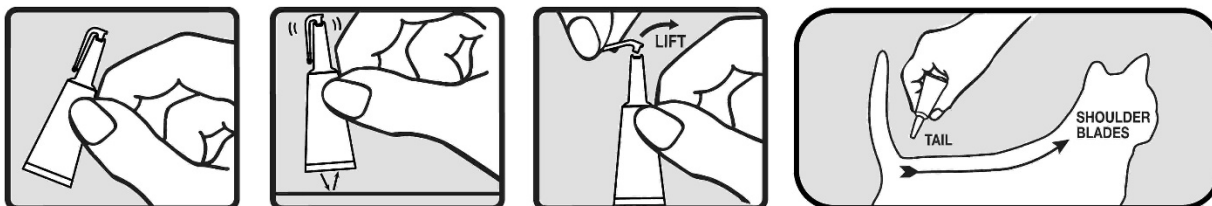


## DIRECTIONS FOR USE {OPTION 5}

1. Cat must be dry at time of application and remain dry for 48 hours after application.
2. Remove one applicator tube [tube] from the package and hold in an upright position [at the neck of the tube] pointed away from face.
3. Tap applicator tube [tube] to settle liquid into the sealed end of the tube.
4. Lift the handle [lever] [at the neck of the tube] in an upward motion to separate from [the body of] the tube.
5. Position the tip of the tube on the cat's back at the base of the cat's tail. Use the tip of the tube to part the cat's hair so that the product will be applied at the skin level [to the skin].
6. Begin squeezing out the contents of the tube to form a stripe as you move from the base of the tail, along the cat's back to the shoulder blades. Do not bathe cat within the first 24 hours after Spot On [squeeze on] [product] has been applied. Households with more than one cat should prevent cats from grooming each other until solution has dried.
7. Repeat application once every month.

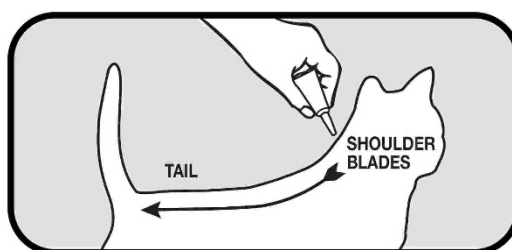
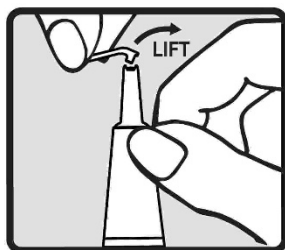
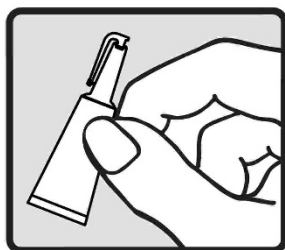


{Note to Reviewer: Below images refer to step 3, tapping applicator.}

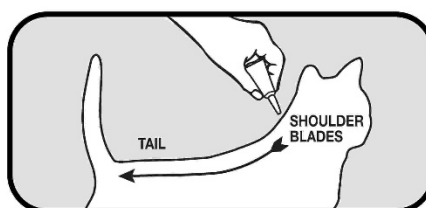
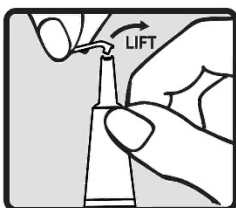
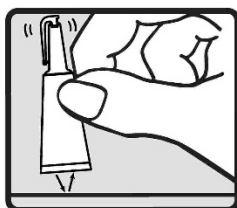
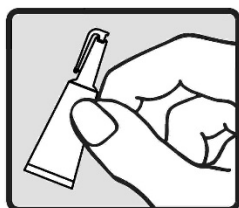


## DIRECTIONS FOR USE {OPTION 6}

1. Cat must be dry at time of application and remain dry for 48 hours after application.
2. Remove one applicator tube [tube] from the package and hold in an upright position [at the neck of the tube] pointed away from face.
3. [Tap applicator tube [tube] to settle liquid into the sealed end of the tube.]
4. Lift the handle [lever] [at the neck of the tube] in an upward motion to separate from [the body of] the tube.
5. Position the tip of the tube on the cat's back at the base of the cat's neck between the shoulder blades. Use the tip of the tube to part the cat's hair so that the product will be applied at the skin level [to the skin].
6. Begin squeezing out the contents of the tube to form a stripe as you move from the shoulder blades, along the cat's back to the base of the tail. Do not bathe cat within the first 24 hours after Spot On [squeeze on] product has been applied. Households with more than one cat should prevent cats from grooming each other until solution has dried.
7. Repeat application once every month.



{Note to Reviewer: Below images refer to step 3, tapping applicator.}



## FREQUENCY OF APPLICATION

*{Note: The following paragraph enclosed in brackets is Optional Text for FREQUENCY OF APPLICATION section}:}*

[Used once a month, {Alternate Brand Name} breaks the flea life cycle and controls tick and chewing lice infestations on cats & kittens]. {Alternate Brand Name} [also] prevents development of flea stages for 1 month. [Re-apply {Alternate Brand Name} after 1 month.]

{Alternate Brand Name} kills ticks for 1 month. Re-apply after 1 month for tick control.

{Alternate Brand Name} kills chewing lice for 1 month. [Do not reapply product for 1 month.]

{Alternate Brand Name} remains effective for 1 month, even after bathing, [swimming,] water immersion, or exposure to sunlight. Avoid contact with treated area until dry. Do not reapply {Alternate Brand Name} for 1 month.

## STORAGE AND DISPOSAL

Do not contaminate water, food, or feed by storage or disposal. Do not use or store near heat or open flame.

**PESTICIDE STORAGE:** Keep this product in its tightly closed original container, when not in use. Store in a cool, dry (preferably locked) area that is inaccessible to children and animals.

**PESTICIDE DISPOSAL:** Wastes resulting from the use of this product may be disposed of on site or at an approved waste disposal facility.

**CONTAINER HANDLING:** Non-refillable container. Do not reuse or refill this container. *If empty:* Offer for recycling, if available or place in trash. *If partly filled:* Call your local solid waste agency for disposal instructions. Never place unused product down any indoor or outdoor drain.

## SIDE EFFECTS *{Located in a box at the lower right hand corner of the back label.}*

Monitor your cat after application. Side effects may include signs of skin irritation such as redness, scratching, or other signs of discomfort. Gastrointestinal signs such as vomiting or diarrhea have also been reported. If these or other side effects occur, consult your veterinarian or call 1-800-275-1414.

For more information, call our [flea and tick] experts at 1-800-275-1414 [weekdays, 9 am – 5 pm E.S.T.]

EPA Reg. No. 2596-166

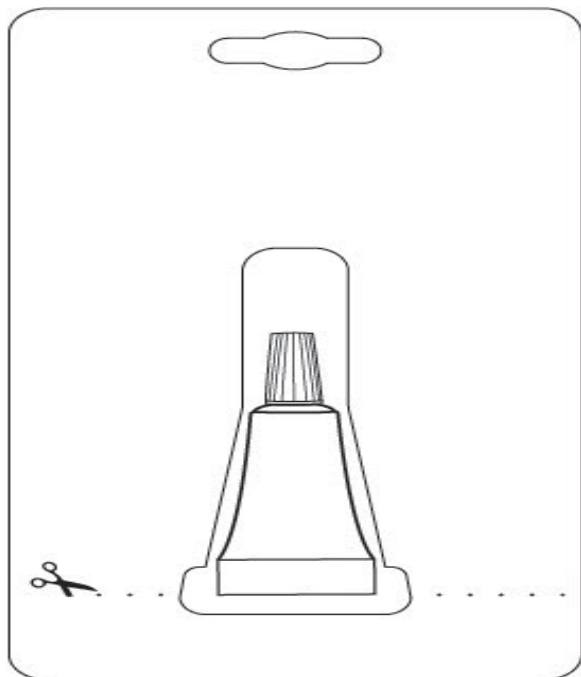
EPA Est. No. 2596-XX-X

[Hartz® and other trademarks are trademarks of The Hartz Mountain Corporation.]

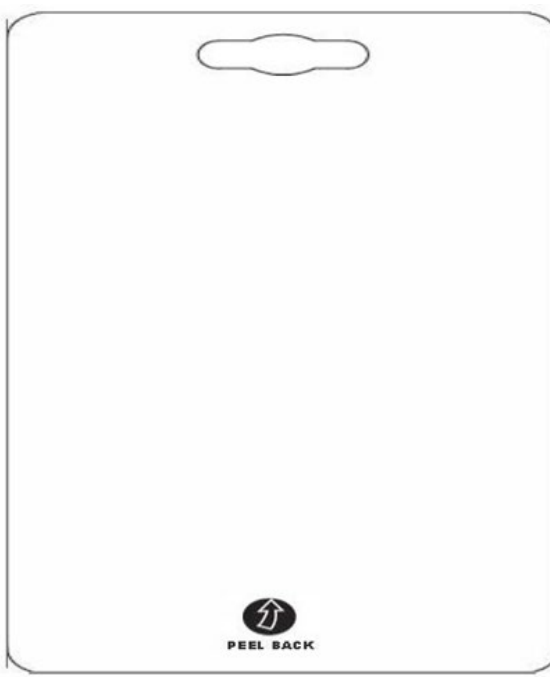
Made by The Hartz Mountain Corporation, 200 Plaza Drive, Secaucus, NJ 07094

**{CRP BLISTER ILLUSTRATIONS – SINGLE BLISTER}**

**{Note to Reviewer:** Only CRP configurations, including the corresponding tubes which were tested and approved, will be used for this product. **Opening Instructions for Single Blister:** A dashed line will be printed on the back of the blister package, accompanied by a scissor symbol indicating where to cut the blister package. The back of the blister package will be printed with an arrow with the words “PEEL BACK”, dictating where to peel in order to open the blister package.}



FORMING SIDE OF PACKAGE

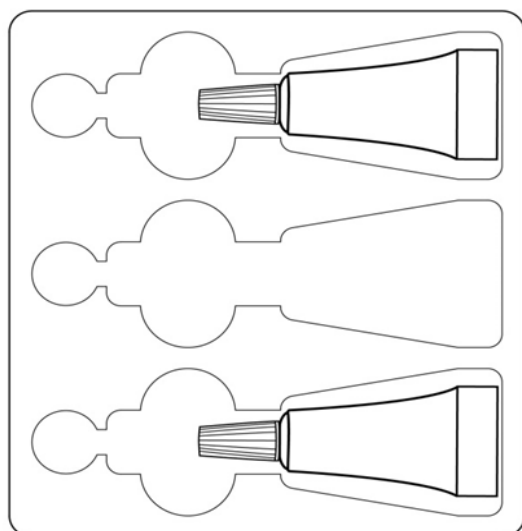


BACKING SIDE OF PACKAGE

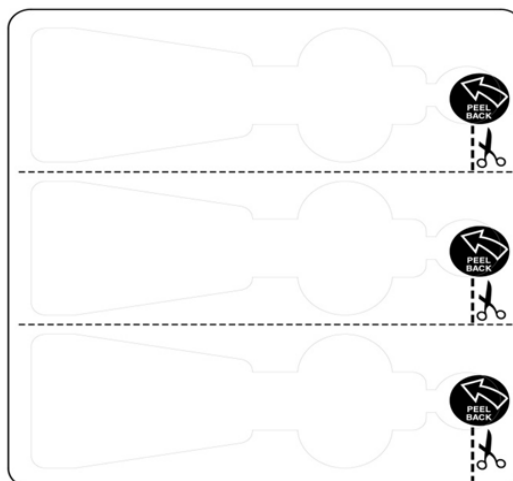
**{CRP BLISTER ILLUSTRATIONS – 2, 3, 4, 6, AND 8 TUBE BLISTER PACK}**

**{Note to Reviewer:** Opening Instruction for **2, 3, 4, 6 and 8 tube CRP Blister**: A dashed line will be printed on the back of the blister package, accompanied by a scissor symbol indicating where to cut the blister package. The back of the blister package will be printed with an arrow with the words “PEEL BACK”, dictating where to peel in order to open the blister package.}

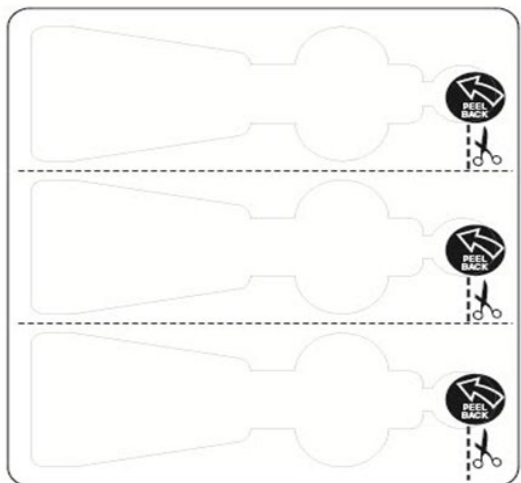
{The following SAUE graphic demonstrating dotted line with scissors icon and arrow to peel back, will appear on the **2, 3, 4, 6, and 8 tube CRP blister pack**, with blister pack indicating the following package configurations: 1 tube single blister, 2 tubes single blister, 3 tubes single blister, 4 tubes single blister, 6 tubes packaged as 2 blisters, each containing 3 tubes, 8 tubes packaged as 2 blisters, each containing 4 tubes}:



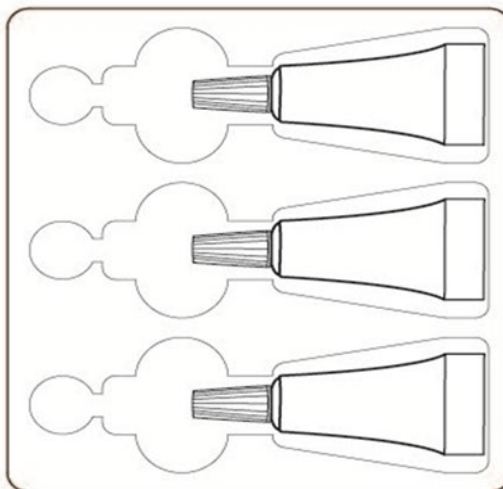
FORMING SIDE OF PACKAGE



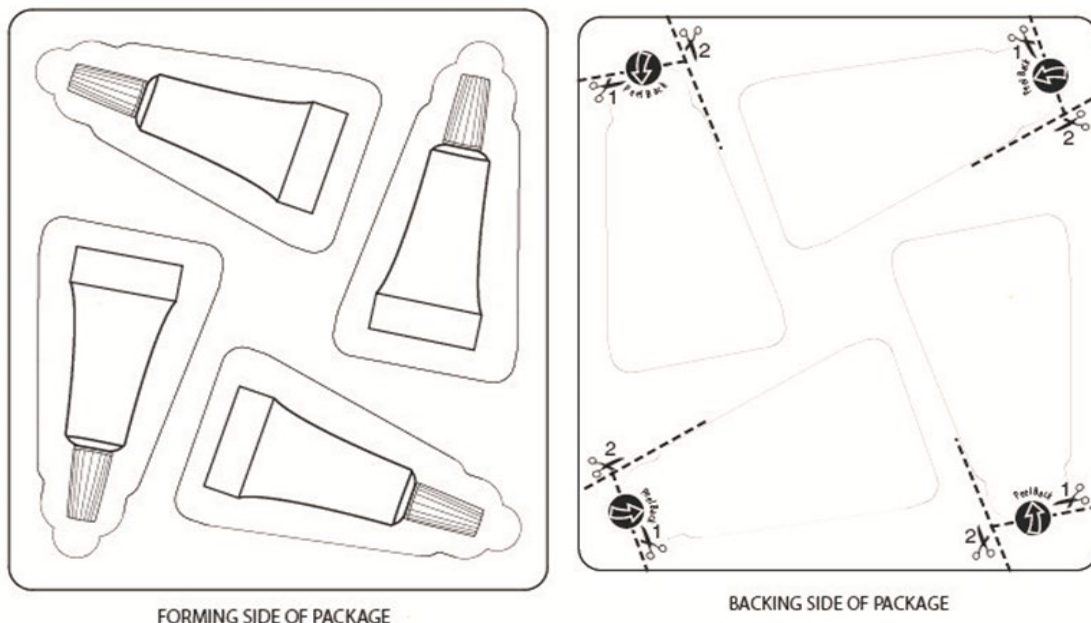
BACKING SIDE OF PACKAGE



BACKING SIDE OF PACKAGE



FORMING SIDE OF PACKAGE



**{BLISTER TEXT}**

**{Note to Reviewer:** When CRP strip of 2 or 3 blister pack with non-CRP tube is used to produce packages containing 1, 2, 3, 4, 6, or 8 tubes, text will appear on each blister that contains a tube.}

*{Alternate Brand Name}*

ONLY for use on Cats & Kittens 8 weeks and older weighing 1.5 lbs or more

Contains 0.017 fl. oz. (0.5 mL)

Lot Code:

EPA Reg. No. 2596-166

EPA Est. No. 2596-XX-X

**ACTIVE INGREDIENTS:**

Fipronil.....9.80%

(S)-Methoprene.....11.80%

Keep Out of Reach of Children

CAUTION

Read accompanying label before use

**{INDIVIDUAL TUBE TEXT}**

*{Text is for all individual tubes and for tubes found in the blister}:*

{Alternate Brand Name}

Only for use on cats & kittens 8 weeks and older weighing 1.5 lbs or more

0.017 fl oz (0.5mL)

Contains Fipronil 9.8%, (S)-Methoprene

11.8%

Keep Out of Reach of Children

Caution

Read accompanying label before use

EPA Reg. No. 2596-166

EPA Est. No. 2596-XX-X

*{Lot number to appear on tube crimp}*

**{OPTIONAL LABEL TEXT}**

***{Note to Reviewer: Bullets have been added to Optional Label Text and Non- Pesticide Related Claims & Other Optional Text sections to make it easier to itemize and review.}***

- {Alternate Brand Name} can also be used for the treatment and control of flea, tick and chewing lice infestations on breeding, pregnant and lactating queens.
- Controls and prevents flea infestations on cats & kittens 8 weeks & older weighing 1.5 lbs or more
- Kills adult fleas, flea eggs, and flea larvae
- Prevents flea stages [eggs, larvae] from developing
- Kills fleas which may cause flea allergy dermatitis
- Kills all stages of Deer Ticks [which may transmit Lyme disease], Brown Dog Ticks, American Dog Ticks, and Lone Star Ticks
- Controls infestations of chewing lice on cats & kittens 8 weeks & older weighing 1.5 lbs or more
- Can [also] be used on breeding, pregnant and lactating queens
- Fast-acting – Starts killing within 30 minutes, 48 hours after application for fleas.
- Long lasting – for 1 month
- Long lasting – Effective for 1 month
- Waterproof
- Convenient [Easy] to use



**{Adult Fleas}**

- Kills Fleas [that may transmit tapeworms] [for] [1 month] on cats & kittens 8 weeks and older weighing 1.5 lbs or more
- Kills[Controls] fleas that may cause flea allergy dermatitis [and] [flea bite anemia] [for] [1 month] on cats and [&] kittens 8 weeks & older weighing 1.5 lbs or more
- Kills newly emerged adult Fleas before they lay eggs
- Re-apply after 1 month for adult flea control
- Controls existing flea infestations on cats & kittens 8 weeks and older weighing 1.5 lbs or more
- Prevents establishment of new flea infestations on cats & kittens 8 weeks and older weighing 1.5 lbs or more

**{Flea Eggs}**

- Kills Flea Eggs [and Flea Larvae] [for][1 month]
- Prevents Flea Eggs from hatching

**{Ticks}**

- Kills Ticks [for] [1 month]
- Kills [all stages of] Brown Dog Ticks, American Dog Ticks, Lone Star Ticks and Deer Ticks [for] [1 month]
- Kills all stages of Brown Dog ticks [(*R. sanguineus*)], American dog ticks [(*D. variabilis*)], Lone Star ticks [(*Amblyomma americanum*)], Deer ticks [(*Ixodes scapularis*)] [which may transmit Lyme disease]
- Kills all stages of Ticks, [including those that may transmit Lyme disease]
- Kills [all stages of] Deer Ticks [that may transmit Lyme disease] [for][on cats & kittens 8 weeks and older weighing 1.5 lbs or more]
- Kills all biting stages of ticks
- Kills adult [brown dog] [deer] ticks, nymphs and larvae
- Kills Ticks including those that may transmit Lyme disease

**{Lice}**

- Controls infestations of chewing lice on cats & kittens 8 weeks and older weighing 1.5 lbs or more

**{Multiple}**

- Kills fleas, flea eggs [and] [&] larvae, [ticks], [and] [chewing lice]
- Kills all stages of ticks [including those that may transmit Lyme disease]
- Kills Fleas, Flea Eggs [and] Larvae [and][ Chewing Lice]
- Kills Fleas, Ticks, Flea eggs, Chewing Lice, [Flea larvae]
- Kills Fleas, Ticks, Flea eggs [Flea larvae] [through contact] [for] [1 month] on cats & kittens 8 weeks and older weighing 1.5 lbs or more
- Kills Fleas, Ticks, Flea Eggs, [Flea larvae], [Chewing lice] [through contact] [for] [1 month]on cats & kittens 8 weeks and older weighing 1.5 lbs or more
- Kills Fleas, Ticks, Flea eggs, [Flea larvae][for 1 month] on cats & kittens 8 weeks and older weighing 1.5 lbs or more
- Prevents Flea eggs, larvae from hatching
- Kills newly emerged flea eggs before they lay eggs

- Kills adult Fleas, Flea Eggs and Larvae
- Kills Fleas, Brown Dog Ticks, Deer Ticks, Flea Eggs, [Flea larvae] [after contact] [for] [1 month] on cats & kittens 8 weeks and older weighing 1.5 lbs or more
- Controls Flea and Tick infestations for 1 month on cats & kittens 8 weeks and older weighing 1.5 lbs or more
- Provides fast (starts killing within 30 minutes, 48 hours after application), effective and convenient treatment and control of fleas, [ticks], [and] [chewing lice] for cats and kittens 8 weeks and older, weighing 1.5 lbs or more]
- Helps prevent re-infestation of fleas and ticks for 1 month on cats & kittens
- Helps prevent flea and tick re-infestation for 1 month on cats & kittens
- Kills flea eggs and flea larvae to help prevent future re-infestations on cats & kittens
- Kills stages of the flea life cycle
- Breaks the flea life cycle
- Prevents flea stages [eggs, larvae] from developing
- Controls flea and tick infestations on cats & kittens 8 weeks and older weighing 1.5 lbs or more
- 1 month Flea and Tick Prevention [Treatment] [Control] [Solution]
- Monthly Flea and Tick Prevention [Treatment] [Control] [Solution]
- Prevents flea eggs from developing into biting adults [for] 1 month
- Spreads with cat's natural skin oils
- Kills fleas for 1 month
- Controls and prevents infestations
- Prevents flea re-infestation
- Prevents and controls flea re-infestation[s] on cats & kittens 8 weeks and older weighing 1.5 lbs or more
- Effective and convenient topical treatment

*{The use of the word "applicator" on the label will comply with what was tested and approved in the CRP/SAUE tests}:*

- [With] patented applicator
- [With] patent pending applicator
- Easy spot on topical applicator
- Waterproof
- Effective after bathing
- Effective after exposure to water
- Remains effective even after bathing, [water immersion], [or] [exposure to sunlight]
- {Alternate Brand Name} remains effective even after bathing, [swimming,] water immersion, or exposure to sunlight.
- {Alternate Brand Name} can also be used for the treatment and control of flea, tick and chewing lice infestations on breeding, pregnant and lactating queens.
- {Alternate Brand Name} Can [can][also] be used on breeding, pregnant and lactating queens
- {Alternate Brand Name} contains Fipronil and the insect growth regulator [(IGR)] (S)-Methoprene.
- {Alternate Brand Name} effectively targets stages of fleas.
- {Alternate Brand Name} [is] fast-acting (starts working within 30 minutes, 48 hours after application), long-lasting (for 1 month), waterproof, [and] [&] [convenient] [easy] [to use].

- ✓ Contains the same active ingredients fipronil and (S)-methoprene found in Frontline® Plus for Cats
- ✓ Contains Fipronil and (S)-Methoprene [the same active ingredients used in Frontline® Plus for Cats]
- ✓ Contains the same active ingredients as Frontline® Plus for Cats

*{Note to Reviewer: whenever any of the three claims immediately above (check marked) are included on product labels, then the label will contain the appropriate disclaimers below (asterisked). The disclaimers will be placed in the same area of the label as the optional claims so that both the check marked and asterisked are viewed together.}*

- \* {Alternate Brand Name} is not manufactured by or distributed by Merial Limited
- \* {Alternate Brand Name} is not manufactured by or distributed by Merial
- \* Frontline® is a registered trademark of Merial Limited
- \* Frontline® Plus is a registered trademark of Merial

### **{NON-PESTICIDE RELATED CLAIMS AND OTHER OPTIONAL TEXT}**

*{For any claims containing an "X" in this section, the "X" will correspond to the net contents. Any "free" applications will be included in the carton.}*

- 1<sup>st</sup> dose, 2<sup>nd</sup> dose, 3<sup>rd</sup> dose, [X<sup>th</sup> dose] {*\*X = 1 or 2 or 3 or 4 or 6 or 8*} "to match net contents.}
- Value pack {*Value pack contains 6 tubes or 8 tubes. Value pack contents will comply with the stated net contents*}
- [6] [8] Dose Value Pack
- Bonus Pack {*Bonus Pack contains 4 or 6 or 8 tubes*}
- Buy 3 get 1 free
- [X] month supply {*X = 1 or 2 or 3 or 4 or 6 or 8 tubes*}
- [X] monthly treatment[s] {*X = 1 or 2 or 3 or 4 or 6 or 8 tubes*}
- Fragrance-free
- Unscented
- Convenient [easy to use] applicator
- [X] Pro-cision Flo® Applicator[s] {*The amount represented by "X" will correspond to the net contents. The term "Applicator" will not be used for screw-top tubes.*}
- With Pro-cision Flo® Applicator
- Featuring Pro-cision Flo® Applicator [for easy application]
- Easy [simple] to use [handle] [apply]
- Easy to use[tube]
- To help remind you when you last applied treatment, simply write in the date when each dose is applied: {*The amount represented by "X" will correspond to the net contents.*}
- First Dose \_\_\_\_\_
- Second Dose \_\_\_\_\_
- Third Dose \_\_\_\_\_
- Xth Dose \_\_\_\_\_

- Calendar [Reminder] stickers [inside]
- 1 [2] [3] [4] [6][8] Doses [Inside]
- 2 Pack [2 tubes] [2 Month Supply when using 1 tube per month] [2 Doses]
- 3 Pack [3 tubes] [3 Month Supply when using 1 tube per month ] [3 Doses]
- 4 Pack [4 tubes] [4 Month Supply when using 1 tube per month ] [4 Doses]
- 6 Pack [6 tubes] [6 Month Supply when using 1 tube per month] [6 Doses]
- 8 Pack [8 tubes][8 Month Supply when using 1 tube per month] [8 Doses]
- 1[2] [3] [4] [6] [8] doses[tubes][tube][month supply] when using 1 tube per month.
- Contains 1[2] [3] [4] [6] [8] [tubes]

The first time you treat your cat, place the First Application Sticker on your calendar. Apply Stickers [2 and 3] [2 through 4] [2 through 8] to the calendar, each 1 month apart, starting with the first application to remind you it's time to reapply {Alternate Brand Name} for Cats.

[First Application Sticker:] Apply {Alternate Brand Name}

[Month 2 Sticker:] Apply {Alternate Brand Name}

[Month 3 Sticker:] Apply {Alternate Brand Name}

[Month 4 Sticker:] Apply {Alternate Brand Name}

[Month 5 Sticker:] Apply {Alternate Brand Name}

[Month 6 Sticker:] Apply {Alternate Brand Name}

[Month 7 Sticker:] Apply {Alternate Brand Name}

[Month 8 Sticker:] Apply {Alternate Brand Name}

- For Customer Service please call 1-800-275-1414
- Questions or comments about this product? Call 1-800-275-1414 [Monday-Friday X am - Xpm EST]

**{OPTIONAL MARKETING ICONS}**



Adult Fleas



Adult Ticks



Flea Eggs



Flea Eggs



Flea Larvae



Flea Larvae



Tick Larvae and Nymph



Tick Larvae and Nymph



Chewing Lice



March 4, 2025

*{The following optional images on this page have been added to the EPA label dated March 4, 2025.}*



**{ALTERNATE BRAND NAMES}**

FieldForce Plus™ Dual Action™ Topical Solution for Cats [& [and] Kittens]  
FieldForce Plus™ Dual Action™ Topical Treatment for Cats [& [and] Kittens]  
FieldForce Plus™ for Cats [&] [and] [Kittens]

First Defense Plus™ Dual Action™ Topical Solution for Cats [& [and] Kittens]  
First Defense Plus™ Dual Action™ Topical Treatment for Cats [& [and] Kittens]

First Defense Plus™ Dual Active Topical Solution for Cats [& [and] Kittens]  
First Defense Plus™ Dual Active Topical Treatment for Cats [& [and] Kittens]

First Defense Plus™ for Cats [& Kittens]

Hartz® FieldForce Plus™ Dual Action™ Topical Solution for Cats [& [and] Kittens]  
Hartz® FieldForce Plus™ Dual Action™ Topical Treatment for Cats [& [and] Kittens]  
Hartz® FieldForce Plus™ for Cats [& Kittens]

Hartz® First Defense Plus™ Dual Action™ Topical Solution for Cats [& [and] Kittens]  
Hartz® First Defense Plus™ Dual Action™ Topical Treatment for Cats [& [and] Kittens]

Hartz® First Defense Plus™ Dual Active Topical Solution for Cats [& [and] Kittens]  
Hartz® First Defense Plus™ Dual Active Topical Treatment for Cats [& [and] Kittens]  
Hartz® First Defense Plus™ for Cat [& [and] Kittens]

Hartz® Force Plus™ Dual Action™ Topical Treatment for Cats [& [and] Kittens]

Hartz® Pet Defender Plus for Cats [& [and] Kittens]  
Hartz® PetDefender Plus for Cats [& [and] Kittens]

Hartz® Plus Force™ Dual Action™ Topical Solution for Cats [& [and] Kittens]  
Hartz® Plus Force™ for Cats [& [and] Kittens]

Pet Defender Plus for Cats [& [and] Kittens]  
PetDefender Plus for Cats [& [and] Kittens]