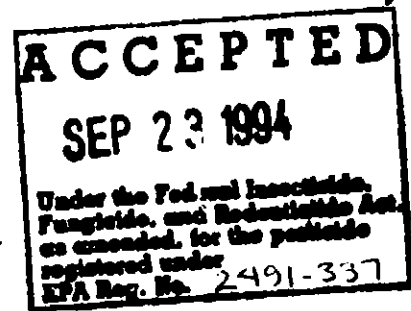


Reg # 2491-337

PM-19

19 5



FRONT PANEL

**GREEN TURF
LAWN FOOD WITH INSECT CONTROL**

This product controls larvae of European Chafer, Japanese Beetle larvae, European Crane Fly larvae, Hyperodes (Turfgrass) weevils, chinch bugs, sod webworms and other lawn pests, plus fertilizes your lawn.

See other side of bag for a complete list of insects controlled.

Treats up to 10,000 square feet (Read Directions for Specific Application Rates)

ACTIVE INGREDIENT:

Chloropyrifos (0,0-diethyl-0-(3,5,6-trichloro-2-pyridyl) phosphorothioate	0.70%
INERT INGREDIENTS:	<u>99.30%</u>
TOTAL	100.00%

GUARANTEED ANALYSIS

Total Nitrogen (N)	10.00%
10.0% Urea Nitrogen	
Available Phosphate (P ₂ O ₅)	6.00%
Soluble Potash (K ₂ O)	4.00%
Derived from diammonium phosphate, urea urea and muriate of potash.	
Chlorine (Cl) Maximum	4.00%

KEEP OUT OF REACH OF CHILDREN

CAUTION

SEE REAR PANEL FOR ADDITIONAL PRECAUTIONARY STATEMENTS

EPA REG. NO. 2491-337

NET WEIGHT - 33 LBS.

EPA EST NO. 2491-WI-1

MANUFACTURED BY
Koos, Inc.
Kenosha, Wisconsin 53141

**PRECAUTIONARY STATEMENTS
HAZARDS TO HUMANS AND DOMESTIC ANIMALS**

CAUTION: Harmful if swallowed, inhaled or absorbed through the skin. Avoid breathing dust and contact with eyes, skin and clothing. If watering in is directed, children and pest should be kept off treated areas until this material is washed into the soil and the grass is dry. Wash thoroughly after handling and before smoking or eating. Keep away from food, feed stuffs and domestic water supplies.

STATEMENT OF PRACTICAL TREATMENT

If Swallowed: Call a physician or poison control center. Drink 1 or 2 glasses of water and induce vomiting by touching back of throat with finger. Do not induce vomiting or give anything by mouth to an unconscious person.

If on skin: In case of contact, remove contaminated clothing and immediately wash skin with plenty of soap and water.

If in eyes: Flush eyes with plenty of water.

Note to Physician: Chloropyrifos is a cholinesterase inhibitor. Treat symptomatically. Atropine only by injection is an antidote.

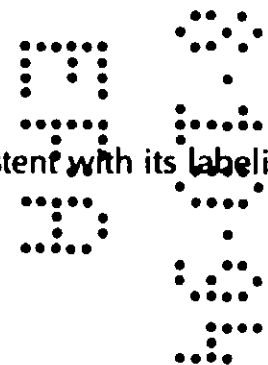
ENVIRONMENTAL HAZARD

This product is extremely toxic to fish, birds and other wildlife. do not apply directly to water or to areas where surface water is present or to intertidal areas below the mean highwater mark. Do not apply where runoff is likely to occur. Do not contaminate water when disposing of equipment washwaters. Do not feed treated grass clippings to livestock.

This product is highly toxic to bees exposed to direct treatment or residues on plants. Protective information may be obtained from your Cooperative Agricultural Extension Service.

DIRECTIONS FOR USE

It is a violation of federal law to use this product in a manner inconsistent with its labeling. Apply this product only as specified on this label.



CONTROL THESE INSECTS:

Ants
Brown Dog Ticks
Chinch Bugs
Crickets

Cutworms
Earwigs
European Chafer Larvae
European Crane Fly Larvae

Hyperodes Weevils
Japanese Beetle Larvae
Sod Webworm
Sow Bugs (Pillbugs)

NOTE: Mosquitos coming to rest on areas treated for control of turf pests will be killed for varying periods of time after treatment, depending on exposure of treated areas to weather conditions.

APPLICATION DIRECTIONS

Treat when insects are active or as recommended by State Agricultural Experiment Stations or State Extension Service Specialists.

Apply this product uniformly to home lawns and other ornamental and recreational turf grass areas using any hand or power operated gravity or rotary type spreader designed for application of granular materials. This product is not for pasture use. To obtain uniform distribution apply one-half the required amount of product in one direction; then apply the balance at a right angle.

After 2 or 3 days water again; apply about an inch of water. Rainfall during this period may be counted, but should be measured.

RATES TO USE

SURFACE INSECTS

To control ants, brown dog ticks, chinch bugs, crickets, cutworms, earwigs, sod Webworms and sow bugs, use the product at a rate of 3.3 lbs per 1,000 sq ft. Do not water granules in when treating for surface insects.

SOIL INSECTS

To control certain white grubs (larvae of European Chafer and Japanese Beetle), use this product at a rate of 6.6 lbs per 1,000 sq ft. For best results, treat when grubs are young and actively feeding near the soil surface, usually during later mid-July and August. Consult your local Agricultural Extension Specialist for proper time to treat in your area. Apply the granules uniformly over the area treated, followed immediately by thorough watering to wash the insecticide into the turf.

To control European Crane Fly larvae, use this product at a rate of 5 pounds per 1,000 sq. ft. using the granular equipment specified.

For increased effectiveness, follow the granule application with a thorough watering to move the insecticide into the soil. Apply the equivalent of 1/2 to 1 inch of water by using a sprinkler or other means of applying water to turf. Consult your local Agricultural Extension Service specialist for timing of application in your geographic area.

To control Hyperodes (turfgrass) weevils use this product at a rate of 6.6 lbs. per 1,000 sq. ft. Treat suspected problem areas in mid-April and again in Mid-May. Consult your local Agricultural Extension Service Specialist for best time to treat your area.

SPREADER SETTINGS

Due to variations in individual machines, these settings are intended to be a guide. It is important to make certain that your machine is spreading the correct amount of material at the setting used. The following spreader settings are based on a half rate for a two direction application.

Make of Spreader	Coverage		
	5,000 sq. ft.	6,600 sq. ft.	10,000 sq. ft.
Turf Line Rotary	2*	1 3/4*	1.5*
Cyclone	2*	1 3/4*	1.5*
Scott Conventional	3	2 3/4	2

*Based on a spreading width of 6 feet.

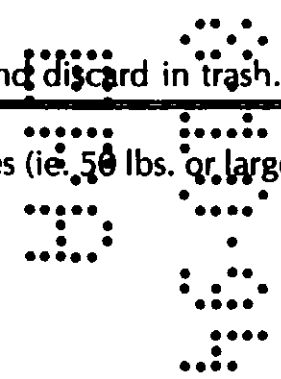
STORAGE AND DISPOSAL

Storage: Store in original container and keep any bags containing unused product in an area inaccessible to children and domestic animals. Do not store near food or foodstuff. To prevent cross-contamination, do not store near other fertilizers, or near herbicides, insecticides, fungicides or seeds.

Product Disposal: To dispose of bags which contain unused product, securely wrap bag in several layers of newspaper and discard in trash.

Container Disposal: Do not reuse empty bag. Fold empty bag and discard in trash.

Alternate Statement (below) for Commercial Applicator sized packages (ie. 50 lbs. or larger).



595

STORAGE AND DISPOSAL

Storage: Always store product in original container and in locked storage area. Do not contaminate other pesticides, fertilizers, seeds, water, food or feed by storage or disposal.

Product Disposal: Wastes resulting from the use of this product may be disposed of on site or at an approved waste disposal facility.

Container Disposal: Completely empty bag into application equipment. Then dispose of empty bag in a sanitary landfill or by incineration, or, if allowed by State and local authorities, by burning. If burned, stay out of smoke.

NOTICE: Seller warrants that the product conforms to its chemical description and is reasonably fit for the purposes stated on the label when used in accordance with directions under normal conditions of use, but neither this warranty nor any other warranty of merchantability or fitness for a particular purpose, expressed or implied, extends to the use of this product contrary to label instructions, or under abnormal conditions, or under conditions not reasonably foreseeable to seller, and buyer assumes the risk of any such use.

