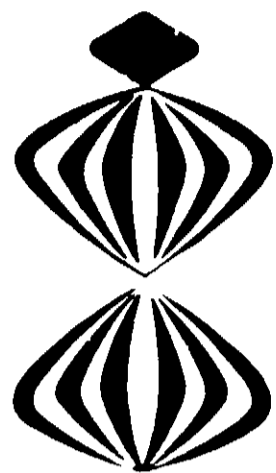


50-282-2118-71

YELLOW GREEN BROWN BLACK

[2491-279]



HOLIDAY CATTLE FLY SPRAY

DIRECTIONS FOR USE

To kill horn flies, stable flies, mosquitoes and gnats that are on the animal and to provide temporary protection from these insects when cows are in pasture, apply 1 to 2 ounces of HOLIDAY FARM SPRAY to each animal as a mist spray. Use a good sprayer so that the entire animal's body has been uniformly covered. Special care should be used in spraying the legs, belly and shoulders. Avoid areas around the nose, eyes and mouth. Avoid wetting the hide. Spray once or twice daily, preferably after the morning milking and before animals go out to pasture. Be sure the teats and udder are washed with warm water prior to milking. Spray calves lightly once a day. Apply to livestock as a mist spray only.

For control of lice on dairy and beef animals, spray the animals with 2 ounces of HOLIDAY FARM SPRAY. Immediately rub the spray into the hair, paying particular attention to infested areas. Repeat as necessary, but not more frequently than once every three weeks.

To kill flies, mosquitoes and gnats in the barn prior to milking, close all doors and windows and direct the spray toward the ceiling. The barn should remain closed for 10 to 20 minutes. Sweep up and destroy fallen insects. Repeat as necessary.

To protect dairy and beef animals from attack by fleas, spray bedding and walls of pen, particularly cracks and crevices. Repeat treatment frequently until adequate control is obtained.

In a complete fly control program these sprays should be used in combination with residual insecticides and sanitary measures.

CAUTION:

Harmful if swallowed. Avoid contami-

READY-TO-USE



HOLIDAY CATTLE FLY SPRAY

Kills Horn Flies, Stable Flies, Mosquitoes and Gnats. Provides Temporary Protection from These Insects when cows are in pasture.

ACTIVE INGREDIENTS:

	By Wt.
Pyrethrins	.035%
*Piperonyl butoxide, technical	.070%
*N-octyl bicycloheptene dicarboximide	.115%
Petroleum distillate	99.780%
Total	100.000%

*Consists of .056% (butylcarbitol) (6-propylpiperonyl) ether

To kill horn flies, stable flies, mosquitoes and gnats that are on the animal and to provide temporary protection from these insects when cows are in pasture, apply 1 to 2 ounces of HOLIDAY FARM SPRAY to each animal as a mist spray. Use a good sprayer so that the entire animal's body has been uniformly covered. Special care should be used in spraying the legs, belly and shoulders. Avoid areas around the nose, eyes and mouth. Avoid wetting the hide. Spray once or twice daily, preferably after the morning milking and before animals go out to pasture. Be sure the teats and udder are washed with warm water prior to milking. Spray calves lightly once a day. Apply to livestock as a mist spray only.

For control of lice on dairy and beef animals, spray the animals with 2 ounces of HOLIDAY FARM SPRAY. Immediately rub the spray into the hair, paying particular attention to infested areas. Repeat as necessary, but not more frequently than once every three weeks.

To kill flies, mosquitoes and gnats in the barn prior to milking, close all doors and windows and direct the spray toward the ceiling. The barn should remain closed for 10 to 20 minutes. Sweep up and destroy fallen insects. Repeat as necessary.

To protect dairy and beef animals from attack by fleas, spray bedding and walls of pen, particularly cracks and crevices. Repeat treatment frequently until adequate control is obtained.

In a complete fly control program these sprays should be used in combination with residual insecticides and sanitary measures.

Harmful if swallowed. Avoid contami-



HOLIDAY CATTLE FLY SPRAY

DIRECTIONS FOR USE

To kill horn flies, stable flies, mosquitoes and gnats that are on the animal and to provide temporary protection from these insects when cows are in pasture, apply 1 to 2 ounces of HOLIDAY FARM SPRAY to each animal as a mist spray. Use a good sprayer so that the entire animal's body has been uniformly covered. Special care should be used in spraying the legs, belly and shoulders. Avoid areas around the nose, eyes and mouth. Avoid wetting the hide. Spray once or twice daily, preferably after the morning milking and before animals go out to pasture. Be sure the teats and udder are washed with warm water prior to milking. Spray calves lightly once a day. Apply to livestock as a mist spray only.

For control of lice on dairy and beef animals, spray the animals with 2 ounces of HOLIDAY FARM SPRAY. Immediately rub the spray into the hair, paying particular attention to infected areas. Repeat as necessary, but not more frequently than once every three weeks.

To kill flies, mosquitoes and gnats in the barn prior to milking, close all doors and windows and direct the spray toward the ceiling. The barn should remain closed for 10 to 20 minutes. Sweep up and destroy fallen insects. Repeat as necessary.

To protect dairy and beef animals from attack by fleas, spray bedding and walls of pen, particularly cracks and crevices. Repeat treatment frequently until adequate control is obtained.

In a complete fly control program these sprays should be used in combination with residual insecticides and sanitary measures.

CAUTION:

Harmful if swallowed. Avoid contamination of milk and milk handling equip-

READY-TO-USE



HOLIDAY CATTLE FLY SPRAY

**Kills Horn Flies, Stable Flies, Mosquitoes and Gnats.
Provides Temporary Protection from These Insects
when cows are in pasture.**

ACTIVE INGREDIENTS:

Pyrethrins	By Wt. 035%
*Piperonyl butoxide technical	070%
*N-octyl bicycloheptene dicarboximide	115%
Petroleum distillate	99.780%
Total	100.000%

*Consists of 056% (butylcarbityl) (6-propylpiperonyl) ether

ONE GALLON

WARNING: "Keep out of the reach of children."

(SEE OTHER WARNINGS ON SIDE PANELS)

WISCONSIN U.S.A. 53140

E.P.A. REG. NO. 2491-279

ment. Avoid overspraying which will result in wetting the animal's hide. Do not spray on or near open flame. Store in cool place.

Do not reuse empty container. Destroy it by perforating or crushing. Bury or discard in a safe place.

DO NOT USE, POUR, SPILL OR STORE NEAR HEAT OR OPEN FLAME.

ANTIDOTE — INTERNAL: Use an emetic of mustard to induce vomiting. Call your physician. If splashed in eye, flush thoroughly with water.

© 64

CUST. <i>N.S. Koos Inc.</i>		DESIGN <i>HOLIDAY CATTLE SPRAY "1-GAL."</i>		NO. P
ENG. <i>4146-1 S.O. 252-3118</i>		SIZE <i>402x610x907</i>	C.E. <i>20.400x9.562</i>	PROO
		B.P. <i>201-52A</i>	DATE <i>12-20-71</i>	CHAN
<small>READ BEFORE SIGNING: Customer agrees that (1) Continental Can Company, Inc. shall not be liable for (a) any error in the attached unless this proof is returned to Continental with such error plainly noted in writing, (b) the failure of any part of the attached to comply with any local, state or Federal law or regulation, (c) any part of the attached which infringes the property rights of others acquired, without limitation thereof, by usage, registration, copyright, letters patent or otherwise and (d) production colors not being exactly the same as the hand proved colors, if any, in the attached, although Continental will duplicate the colors as closely as possible, (2) Customer shall indemnify and hold Continental harmless against the liability described in (1) above, including attorney fees and court costs or for consequential damages, and (3) the liability of Continental for uncorrected errors plainly noted in the attached shall not exceed the actual cost of the containers bearing the noted error.</small>				
CHANGE AS DETAILED <input type="checkbox"/>	APPROVED AS SUBMITTED <input type="checkbox"/>	CUSTOMER SIGNATURE:		CHAN
			DATE	CHAN

morning milking and before animals go out to pasture. Be sure the teats and udder are washed with warm water prior to milking. Spray calves lightly once a day. Apply to livestock as a mist spray only.

For control of lice on dairy and beef animals, spray the animals with 2 ounces of HOLIDAY FARM SPRAY. Immediately rub the spray into the hair, paying particular attention to infested areas. Repeat as necessary, but not more frequently than once every three weeks.

To kill flies, mosquitoes and gnats in the barn prior to milking, close all doors and windows and direct the spray toward the ceiling. The barn should remain closed for 10 to 20 minutes. Sweep up and destroy fallen insects. Repeat as necessary.

To protect dairy and beef animals from attack by fleas, spray bedding and walls of pen, particularly cracks and crevices. Repeat treatment frequently until adequate control is obtained.

In a complete fly control program these sprays should be used in combination with residual insecticides and sanitary measures.

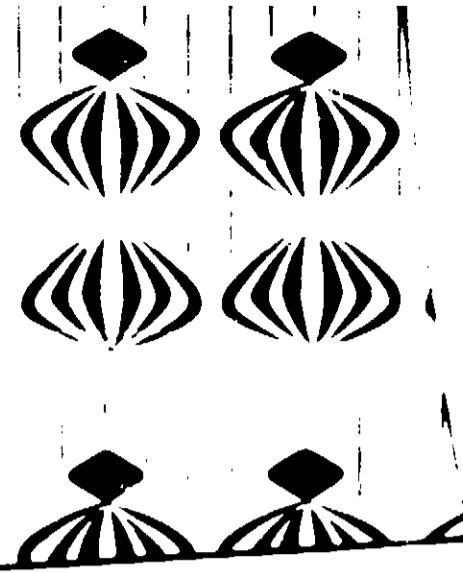
CAUTION:

Harmful if swallowed. Avoid contamination of milk and milk handling equipment. Avoid overspraying which will result in wetting the animal's hide. Do not spray on or near open flame. Store in cool place.

Do not reuse empty container. Destroy it by perforating or crushing. Bury or discard in a safe place.

DO NOT USE, POUR, SPILL OR STORE NEAR HEAT OR OPEN FLAME.

ANTIDOTE — INTERNAL: Use an emetic of mustard to induce vomiting. Call your physician. If splashed in eye, flush thoroughly with water.



HOLIDAY



**Kills Horn Flies, Stable Flies, Mosquitoes and Gnats
Provides Temporary Protection from These Insects
when cows are in pasture**

ACTIVE INGREDIENTS

[Faint, illegible text listing active ingredients and their percentages]

ONE GALLON

CAUTION: "Keep out of the reach of children."

(SEE OTHER WARNINGS ON SIDE PANELS)

KOOS, INC., KENOSHA, WISCONSIN U.S.A. 53140 E.P.A. REG. NO. 2491-279

CUST. <i>N.S. Koos Inc.</i>		DESIGN <i>HOLIDAY</i>
ENG. <i>4146-1</i>	S.O. <i>252-3118</i>	SIZE <i>402x610x907</i> C.E. <i>20400x9.562</i>
<small>READ BEFORE SIGNING: Customer agrees that Continental Can Company, Inc. shall not be liable for any error in the attached unless this proof is returned to the company. Failure of any part of the attached to comply with any local, state or federal law or regulation, (a) any part of the attached which infringes the property rights of copyright, letters patent or otherwise and (b) production colors not being exactly the same as the hand proved colors, if any, in the attached, although Continental shall indemnify and hold Continental harmless against the liability described in (1) above, including attorney fees and court costs or for consequential damages, not in the attached shall not exceed the actual cost of the containers bearing the noted error. Changes increase costs and delay production.</small>		
CHANGE AS DETAIL'D <input type="checkbox"/>	APPROVED AS SUBMITTED <input type="checkbox"/>	CUSTOMER SIGNATURE: _____

[Vertical text on the right edge of the page, partially cut off and difficult to read]

with 2 ounces of HOLIDAY FARM SPRAY. Immediately rub the spray into the hair, paying particular attention to infested areas. Repeat as necessary but not more frequently than once every three weeks.

To kill flies, mosquitoes and gnats in the barn prior to milking, close all doors and windows and direct the spray toward the ceiling. The barn should remain closed for 10 to 20 minutes. Sweep up and destroy fallen insects. Repeat as necessary.

To protect dairy and beef animals from attack by fleas, spray bedding and walls of pen, particularly cracks and crevices. Repeat treatment frequently until adequate control is obtained.

In a complete fly control program these sprays should be used in combination with residual insecticides and sanitary measures.

CAUTION:

Harmful if swallowed. Avoid contamination of milk and milk handling equipment. Avoid overspraying which will result in wetting the animal's hide. Do not spray on or near open flame. Store in cool place.

Do not reuse empty container. Destroy it by perforating or crushing. Bury or discard in a safe place.

DO NOT USE, POUR, SPILL OR STORE NEAR HEAT OR OPEN FLAME.

ANTIDOTE — INTERNAL: Use an emetic of mustard to induce vomiting. Call your physician. If splashed in eye, flush thoroughly with water.

Kills Horn Flies, Stable Flies, Mosquitoes and Gnats. Provides Temporary Protection from These Insects when cows are in pasture.

ACTIVE INGREDIENTS:

Pyrethrins	By Wt 035%
*Piperonyl butoxide, technical	070%
†N-octyl bicycloheptene dicarboximide	115%
Petroleum distillate	99.780%
Total	100.000%

*Consists of .056% (butylcarbityl) (6-propylpiperonyl) ether and .014% related compounds.
†MGK 264 Insecticide Synergist, U.S. Pat. Nos. 2,545,283 and 2,545,287

ONE GALLON

CAUTION:

"Keep out of the reach of children."
(SEE OTHER WARNINGS ON SIDE PANELS)



Award Winning Products . . .
4500 Thirteenth Court / Kenosha, Wisconsin 53140

E.P.A. REG.
NO. 2491-279

2491-279

DESIGN HOLIDAY CATTLE SPRAY "1-GAL."

67 C.E. 20400x9.562 B.P. 201-5 2 A DATE 12-20-71

NO. PROOFS 12

PROOF DATE 1-5-72

CHANGE A

CHANGE B

CHANGE C

ARTIST R. J. [Signature]

ACCEPTED

FEB 4 1972

UNDER THE FEDERAL INSECTICIDE
FUNGICIDE AND RODENTICIDE ACT
FOR ECONOMIC POISON REGISTERED
UNDER NO. 2491-279 SUBJECT
TO ATTACHED COMMENTS.

OMER

ATURE

DATE