

**HOLIDAY**  
**HOME & PATIO**  
**Fogging Spray**

**DIRECTIONS**

Apply to the interior of the room, or to the exterior of the structure, in the evening, after dusk, when the insects are most active. Fog the area thoroughly, and repeat the application every 7 to 10 days. For outdoor use, fog the area in the evening, after dusk, when the insects are most active. Fog the area thoroughly, and repeat the application every 7 to 10 days. For outdoor use, fog the area in the evening, after dusk, when the insects are most active. Fog the area thoroughly, and repeat the application every 7 to 10 days.

**CAUTION**

Keep out of the reach of children. Do not use in occupied rooms. Do not use in areas where food is prepared or stored. Do not use in areas where food is consumed. Do not use in areas where food is stored. Do not use in areas where food is consumed. Do not use in areas where food is stored. Do not use in areas where food is consumed.

**READY-TO-USE**



**HOLIDAY**  
**HOME & PATIO**  
**Fogging Spray**

For Outdoor Use • For use in all Foggers

Ready-to-use solution for the control of Flies,  
 Mosquitoes, and Gnats

Active ingredients	100.00%
2,2-Dimethyl-4-methyl-4-phosphate	0.16%
Related compounds	0.04%
Beta Base, Beta-Thio, and Diethyl Ether	0.50%
Mineral Oil	0.97%
<b>Total</b>	<b>100.00%</b>

© 1974 by Viper, Inc., a Division of Viper Chemical Co.

**CAUTION:**

Keep out of the reach of children. Do not use in occupied rooms. Do not use in areas where food is prepared or stored. Do not use in areas where food is consumed. Do not use in areas where food is stored. Do not use in areas where food is consumed. Do not use in areas where food is stored. Do not use in areas where food is consumed.

ACCEPTED:

Article 30117

3/4/74

**H**  
**HOI**  
**Fog**



**HOLIDAY**  
**HOME & PATIO**  
**Fogging Spray**

**DIRECTIONS**

**CAUTION**

**READY-TO-USE**



**HOLIDAY**  
**HOME & PATIO**  
**Fogging Spray**

**For Outdoor Use • For use in all Foggers**

Ready-to-use solution for the control of Flies,  
 Mosquitoes and Gnats

Permethrin	1.0%
DEET (Diethyltoluamide)	1.0%
Related Compounds	1.0%
Ethyl Butyl Acetate	1.0%
Orange Oil	1.0%
Water	98.0%
Net weight per gallon (128 fl. oz.)	128.0

**CAUTION:**

Keep out of the reach of children. Do not breathe vapors from container. Destroy by crushing or pouring contents into running water. (See additional precautions on back panel.)

FILE 7-1710  
 1991-2000

For more information on pest control products, contact your local cooperative or cultural extension service.



Area to be fogged should always be downwind from fogger unit. Since adult mosquitoes concentrate in shelter and other locations, be sure these areas are thoroughly fogged. Do not use on food or feed crops. Care should be taken to avoid over-exposure to plants, animals, and humans. Do not use when improperly used. Do not spray vegetation. During peak mosquito activity, spray at night. Do not use in areas where children and pets are present. Do not use in areas where people are present. Do not use in areas where people are present.

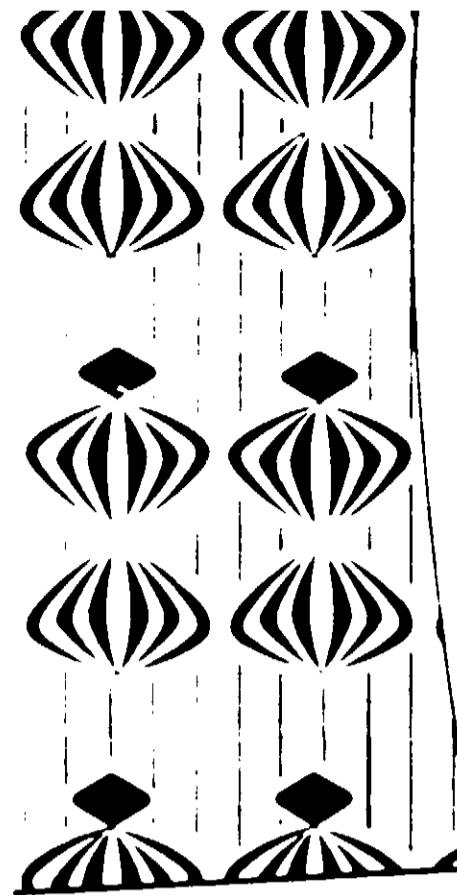
For information on mosquito control, contact your local health department. For information on mosquito control, contact your local health department. For information on mosquito control, contact your local health department.

**CAUTION**

Keep out of the reach of children. Do not reuse empty container. Destroy by crushing or perforating. (See additional precautions on back panel)

ATROPINE 1-2-PAM

KOOS, INC. KENOSHA WISCONSIN 53140



# Fogging Spray

For Outdoor Use • For use in all Foggers

Ready to use solution for the control of Flies, Mosquitoes and Gnats

Active Ingredients	B. wt.
*2, 2-Dichlorovinyl dimethyl phosphate	0.46%
*Related compounds	0.04%
Beta-Butoxy Beta-Thiocyanate Diethyl Ether	0.53%
Mineral Oil	98.97%
Total	100.00%

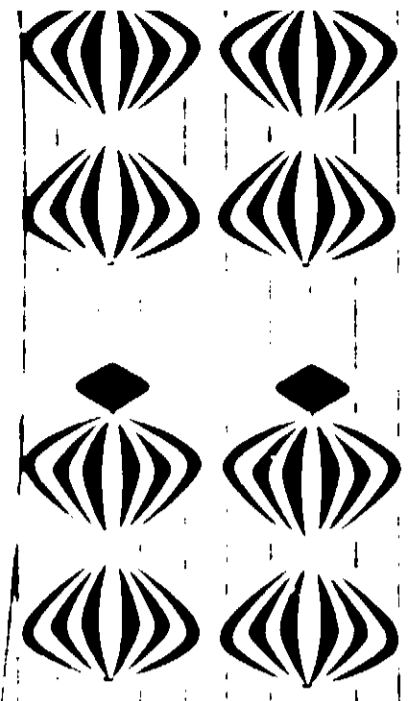
\*Equivalent to .5% Vapona T.M. Shell Chemical Co.

**CAUTION:**

Keep out of the reach of children. Do not reuse empty container. Destroy by crushing or perforating. (See additional precautions on back panel)

**NET CONTENTS 1 GALLON**

KOOS, INC., KENOSHA, WISCONSIN U.S.A. 53140



ACCEPTED  
 June 24, 1970  
 [Signature]

Area to be fogged should always be downwind from fogger unit. Since adult mosquitoes concentrate in shelter and other locations, be sure these areas are thoroughly fogged. Do not use on food or feed crops. Care should be taken to avoid over-exposure to plants, animals, and humans. Do not use when improperly used. Do not spray vegetation. During peak mosquito activity, spray at night. Do not use in areas where children and pets are present. Do not use in areas where people are present. Do not use in areas where people are present.

KOOS, INC.

# KOOS & PATTO

## Fogging Spray

For Outdoor Use • For use in all Foggers

Ready to use solution for the control of Flies,  
Mosquitoes and Gnats

Active ingredients	100.00%
2, 2-Dichlorovinyl dimethyl phosphate	0.46%
Related compounds	0.04%
Beta-Butoxy Beta'-Thiocyano Diethyl Ether	95.50%
Mineral Oil	98.97%
Total	100.00%

\*Equivalent to .5% Vapona T.M. Shell Chemical Co.

### CAUTION:

Keep out of the reach of children. Do not reuse empty container. Destroy by crushing or perforating. (See additional precautions on back panel)

### NET CONTENTS 1 GALLON



Award Winning Products  
1500 Thirteenth Court / Kenosha, Wisconsin 53140

Area to be fogged should always be 10-15 feet from fogging unit since adult mosquitoes are attracted to stationary and other vibrations. Be sure these areas are thoroughly fogged. Do not use on food or feedstuffs. Care should be taken to avoid fogging of people and animals. Do not use in areas where people and animals are present. Do not use in areas where people and animals are present. Do not use in areas where people and animals are present.

### CAUTION

Do not use on food, feedstuffs or animals. Wash thoroughly with soap and water after handling and before eating or smoking. DO NOT contaminate feed, water or foodstuffs. Keep out of reach of children. If swallowed, induce vomiting immediately and get medical attention. Do not get in eyes. Get out of area as soon as possible. Do not breathe vapor spray. Do not use in areas where people and animals are present. Do not use in areas where people and animals are present.

ATROPINE and 2-PAM are added to

to make it safe for use in areas where people and animals are present. Do not use in areas where people and animals are present. Do not use in areas where people and animals are present.

KOOS, INC. KENOSHA, WISCONSIN 53140

COULD THE FOGGER BE USED IN AREAS WHERE PEOPLE AND ANIMALS ARE PRESENT? YES NO