



READY TO USE

2435-7
JUN. 6, 1975

For Control of Hornflies. Aids in the control of lice if used continuously. Aids in the control of face flies if backrubber is adapted so animal can rub its face. Can be used on animals of any age.

Directions For Use

Ready to use; do not dilute.

Place backrubber where animals travel or congregate regularly.

Use in all types of livestock oilers. In automatic oilers, refill when necessary. In burlap oilers, use 1 gal of HYDE Backrubber Oil to 20 ft. of oiler; recharge as necessary. Use one oiler for 50-100 animals.

LIVESTOCK REMEDY – NOT FOR HUMAN USE

Net Contents

U. S. Gallons



HYDE BACKRUBBER OIL

contains KORLAN* Insecticide

*KORLAN - Trademark of The Dow Chemical Company

Active Ingredients

Ronnel [0,0-Dimethyl)-(2,4,5-trichlorophenyl) phosphorothioate+] 1.0%
Mineral Oil 98.5%

Inert Ingredients 0.5%

**Not suitable for internal use in animals*

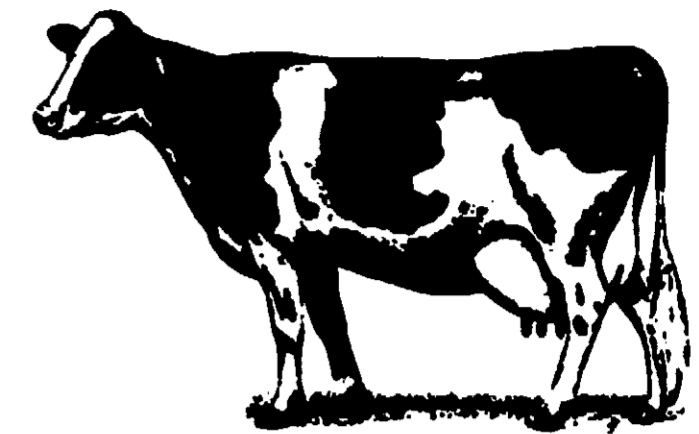
CAUTION

KEEP OUT OF THE REACH OF CHILDREN – HARMFUL IF SWALLOWED

HYDE OIL DIVISION

Sunstar Foods

PIPESTONE, MINNESOTA



CAUTION

Avoid contamination of feed, food, and water. Avoid skin contact. Washing thoroughly after using.

NOTE TO PHYSICIAN AND VETERINARIAN: Ronnel is a cholinesterase inhibitor. Atropine is an antidote. Treat symptomatically.

Backrubbers may be used any time on beef or dairy cattle. Do not spray on animals. Do not reuse empty drum, return to drum reconditioner or destroy it by perforating or crushing it. Bury or discard it in a safe place away from water supplies.

This product is toxic to fish. Keep out of lakes, streams or ponds. "Do not contaminate water by cleaning of equipment, or disposal of wastes".

Apply this product only as specified on this label.

NOTICE: Seller warrants that the product conforms to its chemical description and is reasonably fit for the purpose stated on the label when used in accordance with directions under normal conditions of use, but neither this warranty nor any other warranty of MERCHANTABILITY or FITNESS FOR A PARTICULAR PURPOSE, express or implied, extends to the use of the product contrary to label instructions, or under abnormal conditions not reasonably foreseeable to seller, and buyer assumes the risk of any such use.

EPA REGISTRATION NO. 2435-7

EPA Establishment No. 02435-MN-01