

**DIRECTIONS**

**CATTLE (Beef and Dairy)** to control Hornflies, Houseflies, Stable Flies, Face Flies. Apply 1 to 2 fl. ounces of Hopkins Vapona Plus Spray Solution per animal as a mist spray daily with hand or automatic spray. Apply spray so as to wet the hair. **DO NOT** apply in excess of 2 fl. ounces per animal per day.

**FOR FOGGING** Control of Flies, Gnats and Mosquitoes in animal buildings (Horse Barns, Dairy Barns, Shelters). Use 1 pint of Hopkins Vapona Plus Spray Solution per 8,000 cu. feet. Before applying, reduce air movements as much as possible by closing doors, windows, and other openings. **DO NOT** contaminate water, feed or foodstuffs, milk or milking utensils. **DO NOT** use this solution for fogging purposes in areas where animals have received direct applications within 8 hours. When used in restaurants, warehouses and food processing plants, the treatment should be made by pest control operators only.

Foods should be removed or covered during treatment. All food processing surfaces should be covered during treatment or thoroughly cleaned before using. When using the product in these areas, apply only when the facility is not in operation.

**ANIMAL BUILDINGS:** (Horse Barns, Dairy Barns, Shelter Sheds) Milk Sheds, outdoor areas. To control Flies, Gnats, Mosquitoes, Roaches, Fleas, Ants, Sowbugs, Brown Dog Ticks, Wasps, Flying Moths, and other small flying insects. Cockroaches, Spiders, and Silverfish.

Apply Hopkins Vapona Plus insecticide as a coarse wet spray at the rate of 1 pt. of 1.0% solution per 1,000 sq. ft. for milk sheds, stables, livestock barns, loafing sheds, pig pens, and outdoor areas, treat around doorways, feed storage rooms, alleyways, and window sills. **DO NOT** contaminate milk or milking utensils. For control of fly maggots in maggot breeding areas, apply at the rate of 1 to 2 pts. per 100 sq. feet.

For cockroaches and silverfish, spray in cracks, crevices and other hiding places. For ants, spray trails and places where ants enter premises. For brown dog ticks and fleas, spray floor areas, cracks, crevices and sleeping quarters of animals. Bedding should be allowed to dry thoroughly before use or replaced with fresh bedding. As many insects as possible should be hit with the spray.

**IN POULTRY HOUSES.** For Fly control, apply as a coarse wet spray to manure, window sills, outside of penned enclosures and on the floor of feed storage rooms.

CODE 10.27 71 1 2 3 4 5 6 7 8 9 (6/80)



REGISTERED  
TRADE MARK  
2393-347

*Hopkins*

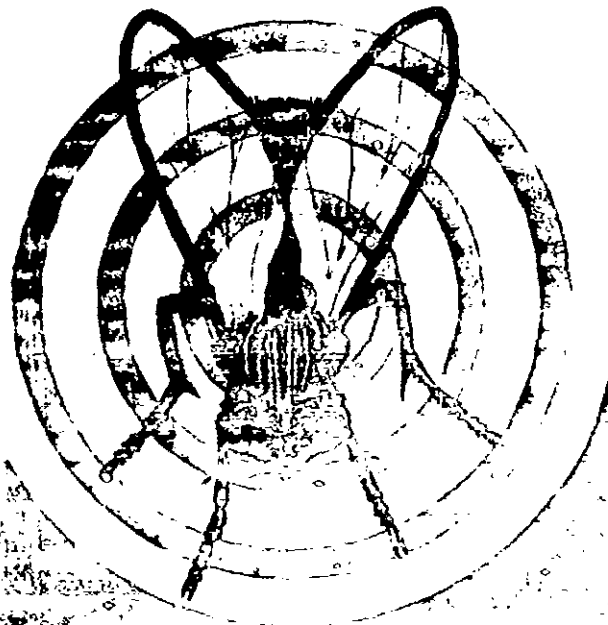
# VAPONA PLUS

## SPRAY SOLUTION

FOR USE IN FOGGERS, MIST SPRAYERS  
AND HAND SPRAYERS

NOT FOR STORAGE IN OR AROUND THE HOME  
RESIDENTIAL USE RESTRICTED TO COMMERCIAL APPLICATORS

BEST DOCUMENT AVAILABLE



Sheds and Outdoor Areas

**ACTIVE INGREDIENTS:**  
 1. Pyrethrin 0.10%  
 2. Pyrethrin 0.10%  
 3. Pyrethrin 0.10%  
 4. Pyrethrin 0.10%  
 5. Pyrethrin 0.10%  
 6. Pyrethrin 0.10%  
 7. Pyrethrin 0.10%  
 8. Pyrethrin 0.10%  
 9. Pyrethrin 0.10%  
 10. Pyrethrin 0.10%

**Related compounds:**  
 1. Pyrethrin 0.10%  
 2. Pyrethrin 0.10%  
 3. Pyrethrin 0.10%  
 4. Pyrethrin 0.10%  
 5. Pyrethrin 0.10%  
 6. Pyrethrin 0.10%  
 7. Pyrethrin 0.10%  
 8. Pyrethrin 0.10%  
 9. Pyrethrin 0.10%  
 10. Pyrethrin 0.10%

**TOTAL**

1.00%

REGISTERED TRADE MARK OF HOPKINS  
 EQUIVALENT TO 1.00% (Diluted 100x)  
 E.P. No. 2-15-2

**WARNING**  
**KEEP OUT OF REACH OF CHILDREN**  
 See Side panel for additional precautionary statements

**NET CONTENTS** **GALLONS**



RECEIVED  
FEB 1961  
2393-342

BEST DOCUMENT AVAILABLE

Hopkins

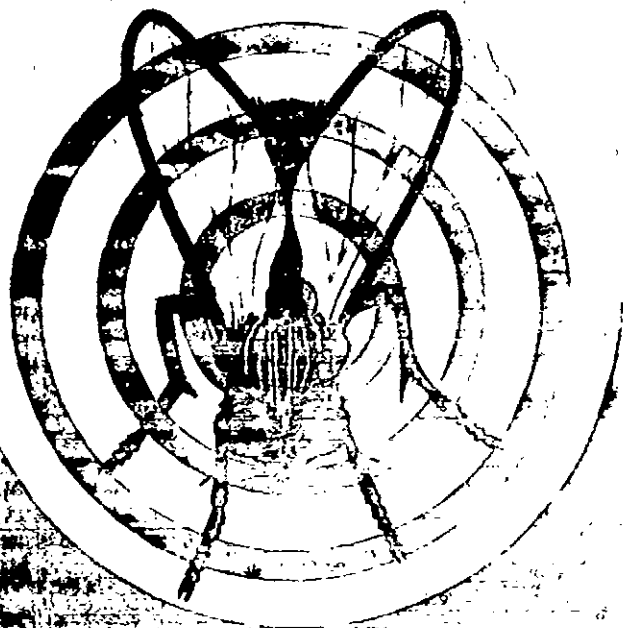
# VAPONA PLUS

## SPRAY SOLUTION

FOR USE IN FOGGERS, MIST SPRAYERS  
AND HAND SPRAYERS

NOT FOR STORAGE IN OR AROUND THE HOME  
RESIDENTIAL USE RESTRICTED TO COMMERCIAL APPLICATORS

BEST DOCUMENT AVAILABLE



Ready for use in foggers, mist sprayers, hand sprayers, and other types of sprayers. Controls flies, gnats, mosquitoes, house flies, and other flying insects. Controls wasps, bees, and other stinging insects. Controls ticks and fleas on dogs and cats. Controls ants, termites, and other household pests. Controls mosquitoes in and around buildings. Controls mosquitoes in and around boats. Controls mosquitoes in and around tents. Controls mosquitoes in and around campgrounds. Controls mosquitoes in and around picnic grounds. Controls mosquitoes in and around parking areas. Controls mosquitoes in and around loading docks. Controls mosquitoes in and around outdoor laboratories. Controls mosquitoes in and around refuse areas. Controls mosquitoes in and around service stations. Controls mosquitoes in and around open-air drive-ins. Controls mosquitoes in and around outdoor ice cream stands. Controls mosquitoes in and around garbage collection and disposal areas.

### ACTIVE INGREDIENTS:

2,2-Dichloro-4,4-dimethyl-1,3-diphosphorbutane

Related compounds

Pyrethrins

Mineral oil

Petroleum hydrocarbons

TOTAL

\* Equivalent to 1.0% active ingredient

\* Registered trademark of Shell Chemical Co.

\*\* Equivalent to 0.05% active ingredient

compounds.

EPA Reg. No. 2392-302

NET CONTENTS

GALLONS 3.1

KEEP OUT OF REACH OF CHILDREN

See Side panel for additional precautions and directions.

### DIRECTIONS (Continued)

**FOR OUTDOOR USE:** To control Flies, Gnats and Mosquitoes. Use 1 pint per 1,000 square feet as a coarse wet spray to treat Picnic Grounds, Loading Docks, Outdoor Laboratories, Parking Areas, Refuse Areas, around Service Stations, Open-Air Drive-Ins, Outdoor Ice Cream Stands, Garbage Collection and Disposal Areas.

In treating DOG KENNELS apply to outside dog runways, window sills and ledges. For control of fleas and brown dog ticks, increase dosage to 1 qt. of Hopkins Vapona Plus Solution per 1,000 sq. ft.

Treat infested areas, baseboards, cracks, walls, doors. DO NOT allow children in treated areas until dry.

### WARNINGS

May be fatal if swallowed, inhaled or absorbed through the skin or eyes. Wash thoroughly with soap and water after handling and before eating or smoking. DO NOT contaminate feed, water or foodstuffs. Keep out of reach of children. If swallowed induce vomiting immediately and get medical attention. Do not get into eyes or skin or on clothing. Rapidly absorbed through skin and eyes. Do not breathe vapor or spray mist. In case of contact immediately remove contaminated clothing and flush skin and eyes with plenty of water. For eye contact, flush with clean water for at least 15 minutes. For skin contact, wash with plenty of water. Wash contaminated clothing with soap and hot water before reuse. Do not reuse cloth or bedding if infested with all insects.

This product is a fire hazard. Do not use near open flames. Do not use in confined spaces. Do not use in areas where children are present. Do not use in areas where food is prepared or stored. Do not use in areas where food is consumed. Do not use in areas where food is stored. Do not use in areas where food is prepared or stored. Do not use in areas where food is consumed. Do not use in areas where food is stored.

Do not use in areas where food is prepared or stored. Do not use in areas where food is consumed. Do not use in areas where food is stored.

**NOTICE OF WARRANTY:** MANUFACTURER AND SELLER MAKE NO WARRANTY OF MERCHANTABILITY, FITNESS FOR ANY PURPOSE, OR OTHERWISE, EXPRESS OR IMPLIED, CONCERNING THIS PRODUCT OR ITS USE, WHICH EXTEND BEYOND THE STATEMENTS ON THIS LABEL.

