

Carson Chemicals, Inc. — New Castle, Indiana 47362
Packaged by:

NET WT. 16 OZ. (1 LB.)

U.S.D.A. REG. NO. 2382-22

See back panel for additional warnings.

specified on this label.

by cleaning of equipment, or disposal of wastes. Apply this product only as

WARNING: This product is toxic to fish and wildlife. Do not contaminate water

of mustard. Call physician immediately. Avoid contamination of feed or foodstuffs.

or clothing. Wash thoroughly with soap and water. If taken internally, use emetic

Vapor or spray may be absorbed through the skin. Avoid contact with eyes, skin

WARNING: May be fatal if swallowed. Do not breathe dust or spray mist.

Do not reuse container. Destroy when empty.

household pets or humans nor on poultry or in poultry houses, or dairy barns.

WARNING: Do not use on lactating dairy animals or on dogs, cats or other

KEEP OUT OF REACH OF CHILDREN

WARNING

100%

Inert ingredients

Lindane (Gamma isomer of benzene hexa-halide)

Active ingredients: 25%

FOR THE TREATMENT OF SARCOPTIC MANGE AND LICE

LINDANE 25% WETTABLE POWDER

DIRECTIONS FOR USE:

Sheep—To dip and treat scabies. Use clean water at not more than 80 F., preferably in a tank having a capacity of 800 to 1,000 gallons. To each 100 gallons of water, add 2 pounds of powder. When the dipping tank is depleted as much as 200 gallons or when it becomes dirty, recharge it at the rate of 2 lbs. and 3 ozs. of powder per 100 gallons of water. Use reliable vat-side tests and do not permit concentration of Lindane dip to exceed 0.06%.

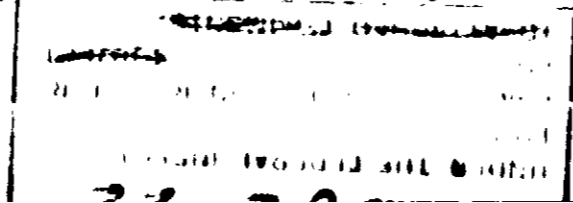
The quantity of water in the tank should be sufficient to submerge the animals. Each animal should be held in the dip not less than 1 minute forcing the head momentarily beneath the surface at least twice. Keep the dip agitated.

Do not dip animals within 60 days of slaughter.

Beef Cattle and Hogs — To treat Sarcoptic mange and lice. To each 50 gallons of spray add 1 lb. of powder. Spray each animal thoroughly, repeating treatment in 10 days to 2 weeks if necessary. For ticks, use same concentration and repeat as necessary.

WARNING: Do not spray within 30 days of slaughter. Do not dip within 60 days of slaughter. Do not treat young animals with a concentration in excess of 0.03% Lindane (1 pound of powder to each 100 gallons of water). Do not apply to young animals less than 3 months of age. Do not treat sows within 2 weeks of farrowing nor for at least 3 weeks thereafter. Avoid treating animals in cold, stormy weather. Avoid treating overheated or sick animals.

See front panel for additional warnings.



ACCEPTED
MAY-21-1971
UNDER THE
PUNGI...
FOR EQUI...
ED UNITS... 2382-
TO ATT... 57

DIRECTIONS

Sprinkle dry on the coat and vigorously rub in to assure contact with the skin.
For barn premises apply liberally to all infested areas.

CAUTION

Do not apply to horses intended for slaughter.
Do not use on animals other than horses, or in dairy barns, on poultry or in poultry houses.
Do not contaminate feed, water, milk, or milking equipment.

CAUTION TO HUMANS

Avoid breathing powder, contact with skin or contamination of foodstuffs. Harmful if swallowed. May be absorbed through skin. May cause irritation of nose and throat.

Wash hands after handling. Do not contaminate feed or foodstuffs.

U.S.D.A. REG. NO. 2382-57



equi-dust

For controlling Ticks, Fleas and Lice on Horses.

Active Ingredients:

Lindane (gamma isomer of benzene hexachloride)	1.00%
Rotenone	1.00%
Other cube resins	1.60%
Inert Ingredients	96.40%
Total	100.00%

CAUTION

Keep out of Reach of Children

See Back Panel For Additional Cautions.

SOLD TO GRADUATE VETERINARIANS ONLY

Net Wt. 16 oz. (1 lb.)

CARSON CHEMICALS, Inc.

New Castle, Indiana

47362