

## PRECAUTIONS IN USING

Unprotected humans should be kept away from the application areas during treatment. Keep out of reach of children and domestic animals. Wash all contaminated clothing with soap and hot water before reuse. Decontaminate equipment and containers thoroughly with lye solution, then destroy using containers to prevent reuse. Do not store near food or feed products. Keep away from heat and open flame.

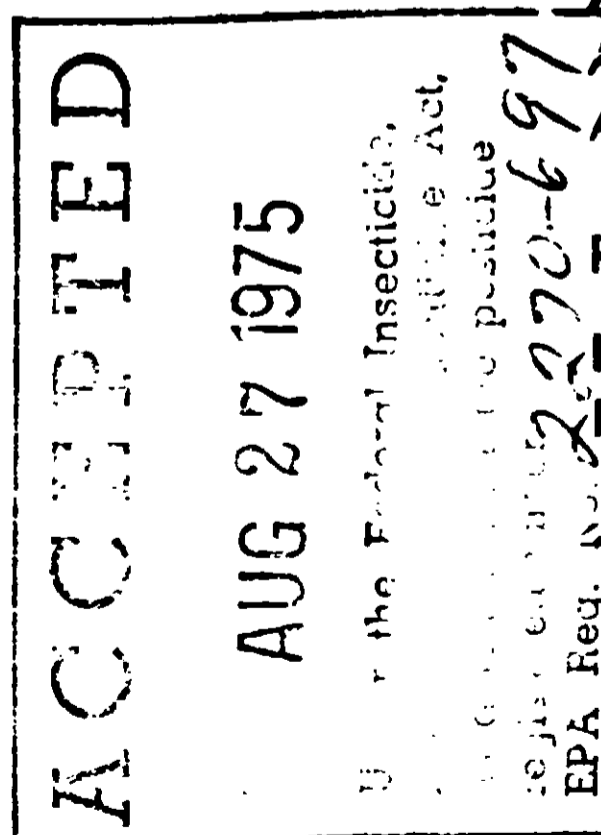
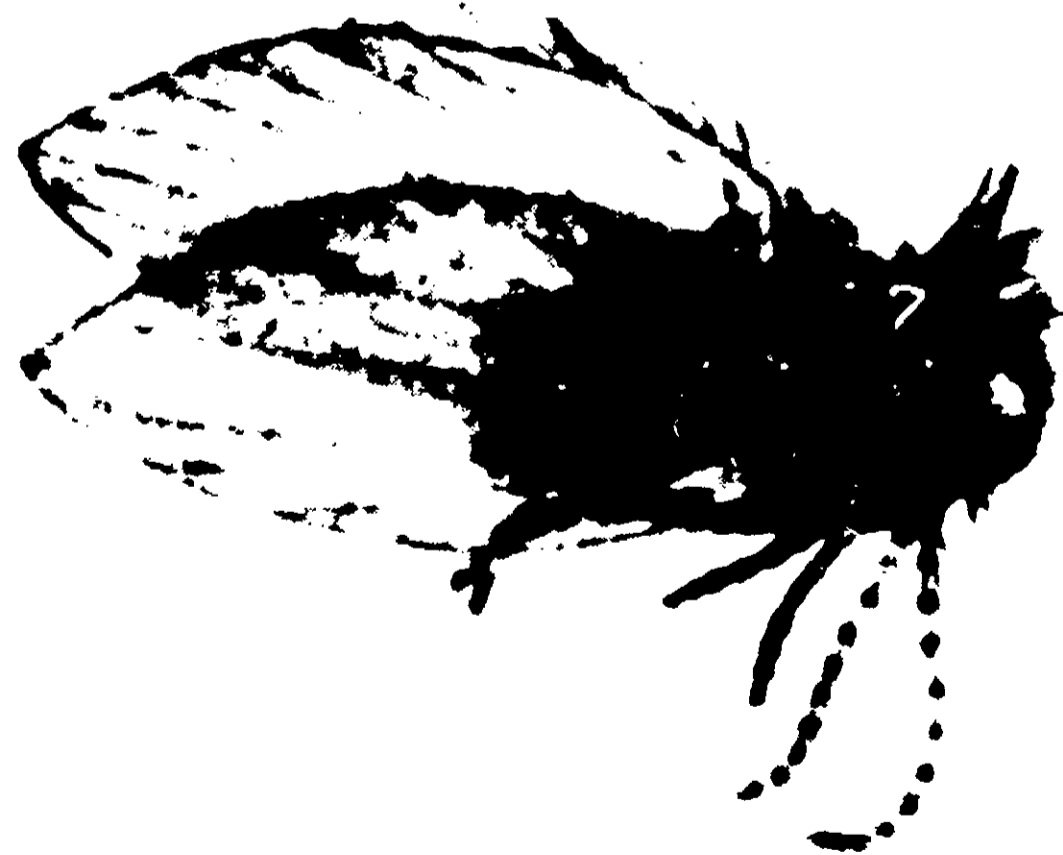
**DANGER:** This product is toxic to fish and wildlife. Keep out of ponds, lakes, and streams where they are important resources.

For control of Psycodid Flies (Filter Flies) at sewage disposal plants. To be added to sewage flowing over filters or in flooded trickling filters.

## GENERAL DIRECTIONS

**FILTER FLY CONTROL**—This product is water soluble and can be applied directly to the sewage flowing to trickling filters or to sewage held in filters which have been flooded to the rock surface for control of the Psycodid Fly, a pest occurring at the trickling filters of sewage disposal plants.

1. **TREATING SEWAGE FLOWING DIRECTLY TO FILTERS.** For control of Psycodid Flies (Filter Flies) larvae and pupae, by treating sewage flowing to trickling filters, add this product at the rate of 1 gal. per 100 gal. of sewage flowing over the filters in a period of one minute.



# XCELcide™

# PSYCODID

# FILTER FLY CONCENTRATE

**For Control of Psycodid Flies (Filter Flies)  
at Sewage Disposal Plants.**

**To be added to sewage flowing over filters  
or in flooded trickling filters.**

### ACTIVE INGREDIENTS

Aromatic Petroleum Distillate	88.36%
Alpha isomer of 2-carbomethoxy-1-methylvinyl dimethyl phosphate*	2.18%
Related Compounds*	1.46%

### INERT INGREDIENT

Polyoxyethylene sorbitol esters of mixed fatty acids	8.00%
Equivalent to 3.64% Phosdrin.	

EPA Reg. No. 2270-697

EPA EST No. 2270-MO-01

2. **TREATING SEWAGE IN FLOODED TRICKLING FILTERS.** For the control of Psycodid Flies (Filter Flies) larvae and pupae, by treating sewage in flooded trickling filters, close the gate from the filter to the secondary clarifier and raise the sewage level in the filter to the rock surface. This product, at the rate of 1/7 of a gallon per 100 gal. of sewage is then added at a number of points around the sides of the filter. The arms of the filter are allowed to make several revolutions for distribution of the material. The contact period of this product is governed by the extent of infestation;



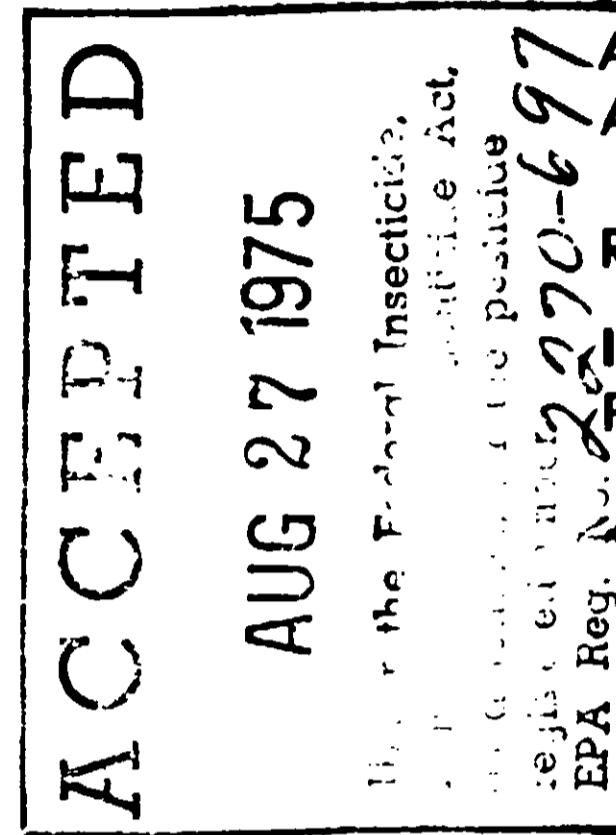
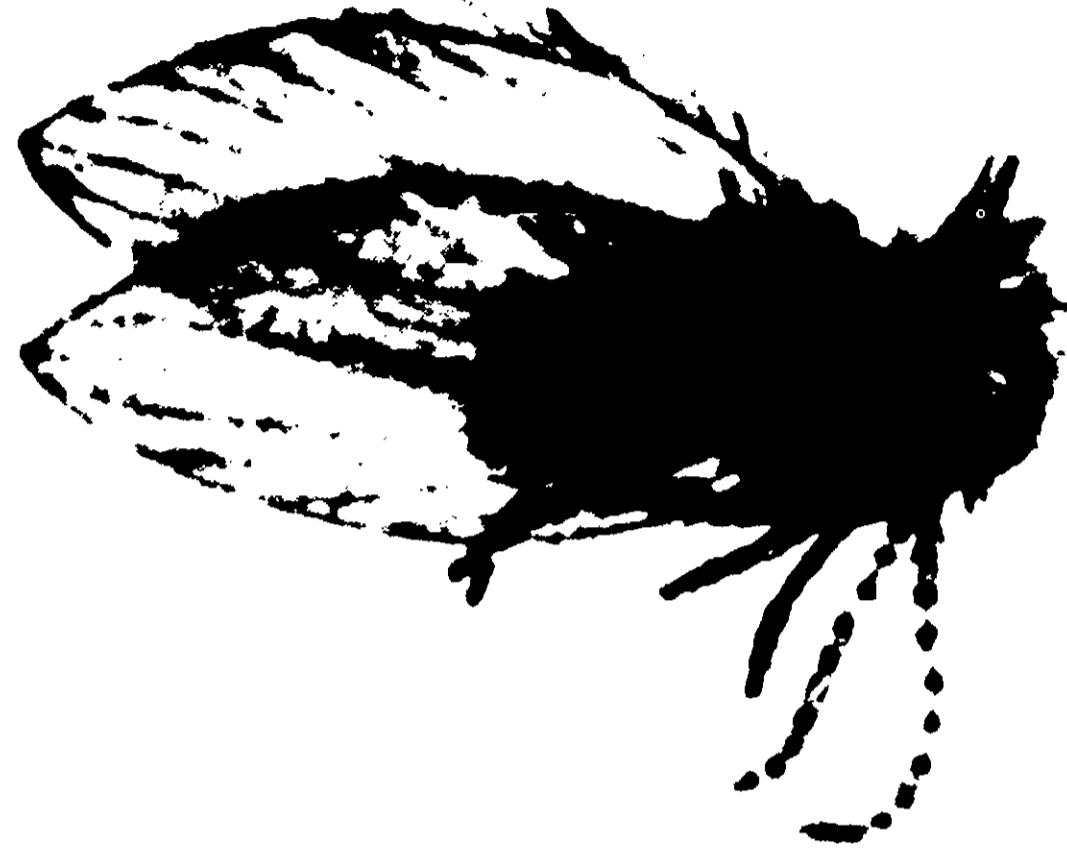
**DANGER — POISON:**

**KEEP OUT OF REACH OF CHILDREN**

POISONOUS IF SWALLOWED, INHALED, OR ABSORBED THROUGH SKIN. REPEATED

**FILTER FLY CONTROL**—This product is water soluble and can be applied directly to the sewage flowing to trickling filters or to sewage held in filters which have been flooded to the rock surface for control of the Psycodid Fly, a pest occurring at the trickling filters of sewage disposal plants.

1. **TREATING SEWAGE FLOWING DIRECTLY TO FILTERS.** For control of Psycodid Flies (Filter Flies) larvae and pupae, by treating sewage flowing to trickling filters, add this product at the rate of 1 gal. per 100 gal. of sewage flowing over the filters in a period of one minute.



**at Sewage Disposal Plants.**  
**To be added to sewage flowing over filters or in flooded trickling filters.**

**ACTIVE INGREDIENTS**

Aromatic Petroleum Distillate	88.36%
Alpha isomer of 2-carbomethoxy-1-methylvinyl dimethyl phosphate*	2.18%
Related Compounds*	1.46%

**INERT INGREDIENT**

Polyoxyethylene sorbitol esters of mixed fatty acids	8.00%
Equivalent to 3.64% Phosdrin.	

EPA Reg. No. 2270-697

EPA EST No. 2270-MO-01

2. **TREATING SEWAGE IN FLOODED TRICKLING FILTERS.** For the control of Psycodid Flies (Filter Flies) larvae and pupae, by treating sewage in flooded trickling filters, close the gate from the filter to the secondary clarifier and raise the sewage level in the filter to the rock surface. This product, at the rate of 1/7 of a gallon per 100 gal. of sewage is then added at a number of points around the sides of the filter. The arms of the filter are allowed to make several revolutions for distribution of the material. The contact period of this product is governed by the extent of infestation; however, the time should never be shorter than 5 hours. At the end of the contact period, the filter can be returned to normal operations, by opening the gate from the filter to the secondary clarifier.

**NOTICE**

Seller and manufacturer warrant that this product conforms to its chemical description and is reasonably fit for the purpose stated on the label when used in accordance with directions under normal conditions of use, but neither this warranty nor any other warranty of merchantability or fitness for a particular purpose, express or implied, extends to the use of this product contrary to label instructions, or under abnormal conditions, or under conditions not reasonably foreseeable to seller, and buyer assumes the risk of any such use.



**DANGER — POISON:**

**KEEP OUT OF REACH OF CHILDREN**

**POISONOUS IF SWALLOWED, INHALED OR ABSORBED THROUGH SKIN, REPEATED INHALATION OR SKIN CONTACT MAY, WITHOUT SYMPTOMS, PROGRESSIVELY INCREASE SUSCEPTIBILITY. RAPIDLY ABSORBED THROUGH SKIN. SEE ADDITIONAL PRECAUTIONS AND ANTIDOTES ON SIDE PANEL.**

**THE HUGE COMPANY, INC.**

*Sanitation Consultants to the Food Industry*

**MANUFACTURERS OF**

**EXCELCIDE INSECTICIDES, RODENTICIDES AND EQUIPMENT**

**7625 PAGE BOULEVARD • ST. LOUIS, MO. 63133**

on areas  
animals.  
re reuse.  
solution,  
tore near

of ponds.

plants. To  
filters.

n be app-  
o sewage  
a for con-  
filters of

or control  
y treating  
t the rate  
lters in a



# XELCIDE™

## PSYCODID

### FILTER FLY CONCENTRATE

**For Control of Psychodid Flies (Filter Flies)  
at Sewage Disposal Plants.**

**To be added to sewage flowing over filters  
or in flooded trickling filters.**

#### ACTIVE INGREDIENTS

Aromatic Petroleum Distillate	88.36%
Alpha isomer of 2-carbomethoxy-1-methylvinyl dimethyl phosphate*	2.18%
Related Compounds*	1.46%

#### INERT INGREDIENT

Polyoxyethylene sorbitol esters of mixed fatty acids	8.00%
Equivalent to 3.64% Phosdrin.	

EPA Reg. No. 2270-697

EPA EST No. 2270-MO-01

**ACCEPTED**

**AUG 27 1975**

U.S. Federal Insecticide, Fungicide Act, Registration No. 2270-697  
EPA Reg. No. 2270-697



### DANGER — POISON:

**KEEP OUT OF REACH OF CHILDREN**

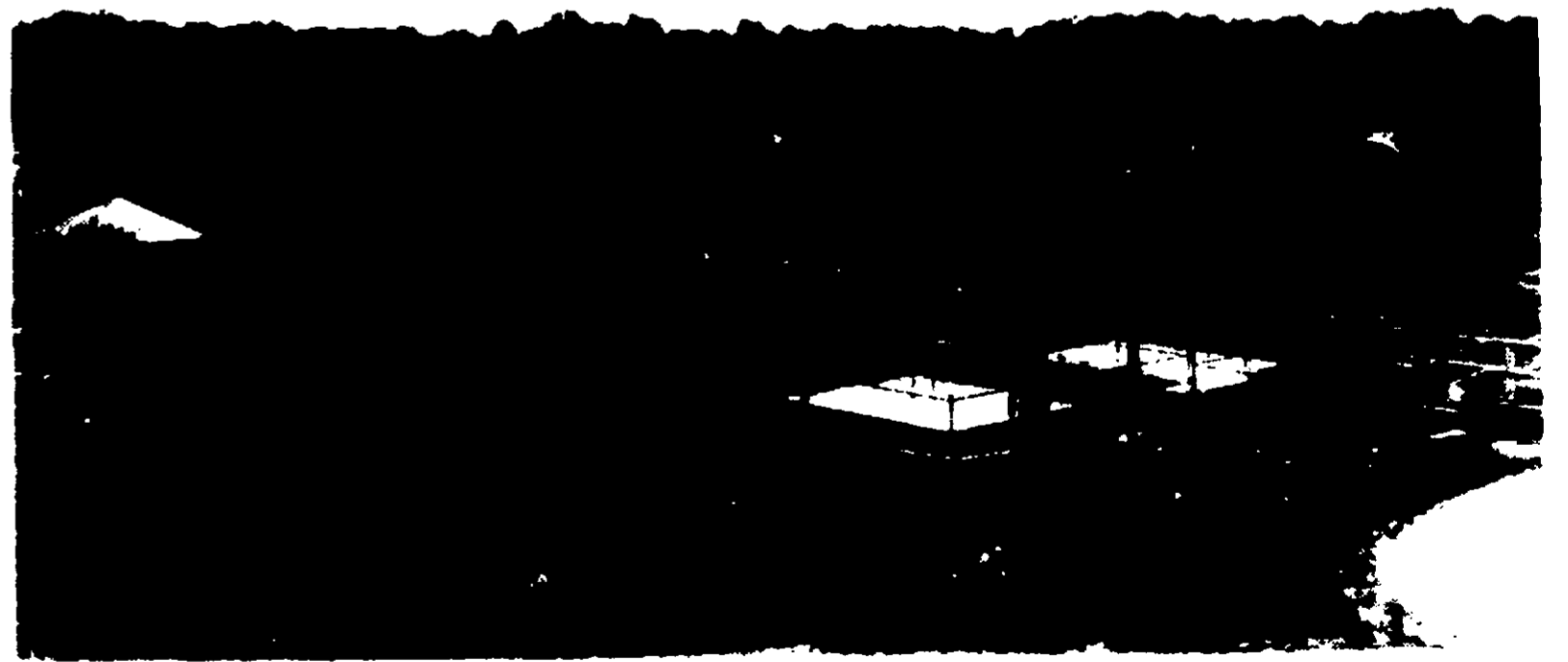
**POISONOUS IF SWALLOWED, INHALED OR ABSORBED THROUGH SKIN, REPEATED INHALATION OR SKIN CONTACT MAY, WITHOUT SYMPTONS, PROGRESSIVELY INCREASE**

### DANGER

Do not swallow or get in eyes, on skin or on clothing. Do not breathe the vapors. Wear clean natural rubber gloves, clean protective clothing, and goggles. Replace gloves frequently and destroy used gloves. Wear a mask or respirator of the type passed by the U.S. Bureau of Mines for Phosdrin insecticide protection. Wash immediately with soap and water after handling and before eating or smoking. If the material gets into the eyes, immediately flush with water for at least ten minutes and get medical attention. In case of contact, remove all contaminated clothing and wash down with large amounts of water. Decontaminate areas and equipment by washing with strong lye solution. Then destroy used containers to prevent re-use.

Oxygen administration may be necessary. Observe patient continuously for 48 hours. Repeated exposure to Cholinesterase inhibitor may, without warning, cause prolonged susceptibility to very small doses of any Cholinesterase inhibitor. Allow no further exposure until time for cholinesterase regeneration has been allowed, as determined by blood test.

**ANTIDOTE AND FIRST AID TREATMENT.** Atropine is the emergency antidote. consult your physician about obtaining an adequate supply of Atropine tablets for emergency use. Call a physician immediately in all cases of suspected poisoning. 2-PAM is also antidotal and may be administered in conjunction with atropine.



**INTERNAL:** If the material has been swallowed, induce vomiting immediately. This may be done by introducing a finger into the throat or by giving warm salt water (a tablespoon of salt to a glass of water).  
**EXTERNAL:** If the material has been spilled on the skin, immediately remove patient from the vicinity of the insecticide, remove all contaminated clothing and wash skin with soap and running water. If the material gets into the eyes, wash immediately with running water for at least ten minutes.

**IF WARNING SYMPTOMS APPEAR:** Administer two 1/100-grain Atropine tablets immediately. Never administer Atropine unless warning symptoms appear (See warning symptoms below). Keep patient prone and quiet. Start artificial respiration immediately if patient is not

control  
reating  
e rate  
s in a

ACCEPTED

AUG 27 1975

Under the Federal Insecticide,  
Fungicide and Rodenticide Act,  
this product has been found to  
comply with the pesticide  
registration requirements  
EPA Reg. No. 2270-697

**ACTIVE INGREDIENTS**

Aromatic Petroleum Distillate	88.36%
Alpha isomer of 2-carbomethoxy-l-methylvinyl dimethyl phosphate*	2.18%
Related Compounds*	1.46%

**INERT INGREDIENT**

Polyoxyethylene sorbitol esters of mixed fatty acids	8.00%
Equivalent to 3.64% Phosdrin.	

EPA Reg. No. 2270-697

EPA EST No. 2270-MO-01



**DANGER — POISON:**

**KEEP OUT OF REACH OF CHILDREN**

**POISONOUS IF SWALLOWED, INHALED OR ABSORBED THROUGH SKIN, REPEATED INHALATION OR SKIN CONTACT MAY, WITHOUT SYMPTONS, PROGRESSIVELY INCREASE SUSCEPTIBILITY. RAPIDLY ABSORBED THROUGH SKIN. SEE ADDITIONAL PRECAUTIONS AND ANTIDOTES ON SIDE PANEL.**

**THE HUGE COMPANY, INC.**

*Sanitation Consultants to the Food Industry*

**MANUFACTURERS OF**

**EXCELCIDE INSECTICIDES, RODENTICIDES AND EQUIPMENT**

**7625 PAGE BOULEVARD • ST. LOUIS, MO. 63133**

Atropine tablets for emergency use. Call a physician immediately in all cases of suspected poisoning. 2-PAM is also antidotal and may be administered in conjunction with atropine.



**INTERNAL:** If the material has been swallowed, induce vomiting immediately. This may be done by introducing a finger into the throat or by giving warm salt water (a tablespoon of salt to a glass of water). **EXTERNAL:** If the material has been spilled on the skin, immediately remove patient from the vicinity of the insecticide, remove all contaminated clothing and wash skin with soap and running water. If the material gets into the eyes, wash immediately with running water for at least ten minutes.

**IF WARNING SYMPTOMS APPEAR:** Administer two 1/100-grain Atropine tablets immediately. Never administer Atropine unless warning symptoms appear (See warning symptoms below). Keep patient prone and quiet. Start artificial respiration immediately if patient is not breathing. Transport the patient immediately to the nearest physician.

**NOTE TO PHYSICIAN**

**WARNING SYMPTOMS:** Symptoms include weakness, headache, tightness in chest, blurred vision, non-reactive pinpoint pupils, salivation, sweating, nausea, vomiting, diarrhea, and abdominal cramps. **TREATMENT:** Atropine is the specific therapeutic antagonist of choice against parasympathetic nervous stimulation. If there are signs of parasympathetic stimulation, Atropine sulfate should be injected at 10 minute intervals in doses of 1 to 2 milligrams until complete strychnization has occurred. Morphine is contraindicated. Clear chest by postural drainage.

**CONTAINER DISPOSAL**

**DRUMS:** Do not reuse empty drum. Return drum to reconditioner or destroy by perforating or crushing and burying in a safe place away from water supplies.

**PAILS:** Do not reuse empty container. Destroy it by perforating or crushing. Bury or discard in a safe place away from water supplies.

the con-  
creating  
e filter  
e filter  
gallon  
around  
o make  
contact  
station;  
At the  
normal  
condary

to its  
ited on  
al-con-  
anty of  
plied,  
ons, or  
ily fore-  
h use.