

COPY FROM

One (Left Panel)

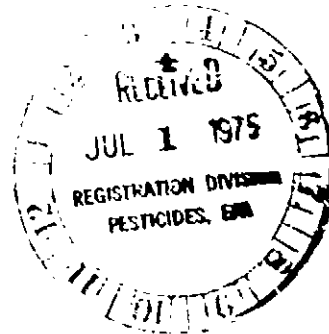
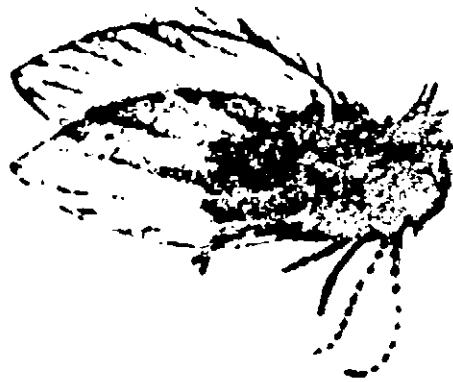
AN INSECTICIDE SPECIFICALLY FORMULATED FOR CONTROL OF FILTER FLIES IN TRICKLING  
FILTER SEWAGE DISPOSAL SYSTEMS. THESE INSECTS ARE ALSO KNOWN AS MOTH FLIES, DRAIN  
FLIES, AND SEWAGE FLIES.

(Par.) (Heading)  
GENERAL DIRECTIONS  
(Par.)

FILTER FLY CONTROL - This product is water soluble and can be applied directly to  
the sewage flowing to trickling filters or to sewage held in filters which have been  
flooded to the rock surface for control of the Psycodid Fly, a pest occurring at the  
trickling filters of sewage disposal plants.

(Par.)  
1. TREATING SEWAGE FLOWING DIRECTLY TO FILTERS. For control of Psycodid Flies  
(Filter Flies) larvae and pupae, by treating sewage flowing to trickling filters,  
add this product at the rate of 1 gal. per 500 gal. of sewage flowing over the  
filters in a period of one minute.

BEST DOCUMENT AVAILABLE



2. TREATING SEWAGE IN FLOODED TRICKLING FILTERS. For the control of Psycodid Flies  
(Filter Flies) larvae and pupae, by treating sewage in flooded trickling filters,  
close the gate from the filter to the secondary clarifier and raise the sewage level

3270-1000  
**COPY FROM**

Two (Left Panel Continued)

FICA

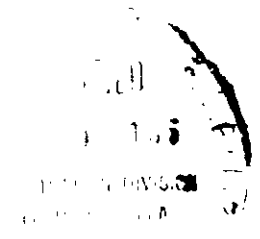
in the filter to the rock surface. This product, at the rate of 1/7 of a gallon per 100 gal. of sewage is then added at a number of points around the sides of the filter. The arms of the filter are allowed to make several revolutions for distribution of the material. The contact period of this product is governed by the extent of infestation; however, the time should never be shorter than 5 hours. At the end of the contact period, the filter can be returned to normal operations, by opening the gate from the filter to the secondary clarifier.

(Par.)  
THIS TREATMENT SHOULD BE REPEATED IN FIVE DAYS. AFTER THE SECOND TREATMENT, WEEKLY INSPECTION SHOULD BE MADE AND TREATMENT REPEATED AS ABOVE WHEN SIGNS OF LARVAE

REAPPEAR.  
(Par.) (Heading)  
NOTICE  
(Par.)

Seller and manufacturer warrant that this product conforms to its chemical description and is reasonably fit for the purpose stated on the label when used in accordance with directions of use, but neither this warranty nor any other warranty of merchantability or fitness for a particular purpose, express or implied, extends to the use of this product contrary to label instructions, or under abnormal conditions, or under conditions not reasonably foreseeable to seller, and buyer assumes the risk of any such use.

BEST DOCUMENT AVAILABLE



4

COPY FROM

Three (Center Panel)

(Headline)

**EXCELICIDE FILTER FLY TREATMENT**

(Par.)

FOR USE BY PROFESSIONAL SEWAGE TREATMENT PLANT OPERATORS ONLY

(Par.)

FOR OUTDOOR USE ONLY

(Par.)

FOR CONTROL OF FILTER FLIES AT SEWAGE DISPOSAL PLANTS.

(Par.)

TO BE ADDED TO SEWAGE FLOWING OVER FILTERS OR IN FLOODED TRICKLING FILTERS.

(Par.)

**ACTIVE INGREDIENTS**

(Par.)

Malathion (0,0-dimethyl di isophosphate of diethyl mercaptosuccinate) 45.00%

Heavy Aromatic Naphtha 41.64%

(Par.)

**INERT INGREDIENTS**

(Par.)

13.36%

**CAUTION:**

KEEP OUT OF REACH OF CHILDREN

(See additional cautions on side panel.)

(Par.)

EPA EST. NO. 2270-MO-01

EPA Registration No. 2270-

(Par.)

THE HUGEL COMPANY, INC.

2525 Wade Avenue

St. Louis, MO 63133

BEST DOCUMENT AVAILABLE

5



CAUTION

Faint, illegible text, likely bleed-through from the reverse side of the page.

FLYING INSECT  
DIRECTIONS FOR USE

Faint, illegible text, likely bleed-through from the reverse side of the page.



CS P  
NO.

FOR INDUSTRIAL AND INST

This product is effective  
and surface



Ke  
**THE HUGE C**

*Sanitation in the Food*

Manufacturers of EXCELCIDE INSE

7625 PAGE AVE.

EPA Reg. No. 2270-677

[2-70-677]

**CAUTION**

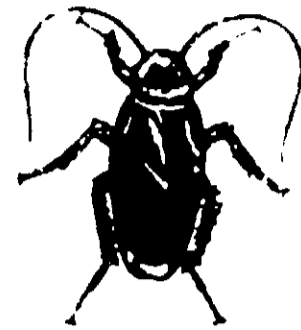
Keep out of reach of children. Do not use in food preparation areas. Do not use in areas where food is stored. Do not use in areas where food is prepared. Do not use in areas where food is served. Do not use in areas where food is consumed. Do not use in areas where food is stored. Do not use in areas where food is prepared. Do not use in areas where food is served. Do not use in areas where food is consumed.

Read and follow all directions on label before using.

**FLYING INSECTS  
DIRECTIONS FOR USE**

Exposed areas of FLIES, MOSQUITOES, GNATS, BITES, WASPS, HORNETS, INDIAN MEAL MOTHS, ANGOUMOS GRAIN MOTHS, FRUIT FLIES, CIGARETTE BEETLES, FLYING MOTHS.

To control these and similar small flying insects, fog this product at the rate of 1 ounce per 1,000 cubic feet with the Dyna-Fog 250, M-1700 or Challenger. Turn off all vents and close all windows and doors. Fog for at least 10 minutes. Repeat as needed.



**SURFACE  
TREATMENT SPRA**



**FOR INDUSTRIAL AND INSTITUTIONAL USE INDOORS ONLY**

This product is effective as a fog, contact spray, and surface treatment spray.

**ACTIVE INGREDIENTS**

1. DDT 1.0%  
2. DDT 1.0%  
3. DDT 1.0%  
4. DDT 1.0%



**EXCEL CIDE**



**CAUTION:**

Keep out of reach of children  
See side panel for additional cautions

**THE HUGE COMPANY, INC.**

*Sanitarians in the Food and Allied Industries*

Manufacturers of EXCEL CIDE INSECTICIDES and PEST CONTROL TOOLS

7625 PAGE AVE

ST. LOUIS MISSOURI 63133

EPA Reg. No. 2270-677

EPA EST. No. 2270-MO-01

**CRAWLING INSECT  
DIRECTIONS FOR USE**

Apply to areas where crawling insects are present. Apply to areas where crawling insects are present. Apply to areas where crawling insects are present. Apply to areas where crawling insects are present. Apply to areas where crawling insects are present. Apply to areas where crawling insects are present. Apply to areas where crawling insects are present. Apply to areas where crawling insects are present. Apply to areas where crawling insects are present. Apply to areas where crawling insects are present.

Apply to areas where crawling insects are present. Apply to areas where crawling insects are present. Apply to areas where crawling insects are present. Apply to areas where crawling insects are present. Apply to areas where crawling insects are present. Apply to areas where crawling insects are present. Apply to areas where crawling insects are present. Apply to areas where crawling insects are present. Apply to areas where crawling insects are present. Apply to areas where crawling insects are present.

Apply to areas where crawling insects are present. Apply to areas where crawling insects are present. Apply to areas where crawling insects are present. Apply to areas where crawling insects are present. Apply to areas where crawling insects are present. Apply to areas where crawling insects are present. Apply to areas where crawling insects are present. Apply to areas where crawling insects are present. Apply to areas where crawling insects are present. Apply to areas where crawling insects are present.

Apply to areas where crawling insects are present. Apply to areas where crawling insects are present. Apply to areas where crawling insects are present. Apply to areas where crawling insects are present. Apply to areas where crawling insects are present. Apply to areas where crawling insects are present. Apply to areas where crawling insects are present. Apply to areas where crawling insects are present. Apply to areas where crawling insects are present. Apply to areas where crawling insects are present.

**NOTICE:** Seller warrants that the product conforms to its chemical description and is reasonably fit for the purpose stated on the label when used in accordance with directions under normal conditions of use, but neither this warranty nor any other warranty of merchantability or fitness for a particular purpose, express or implied, extends to the use of this product contrary to label instructions or to the use of this product in a manner not intended by the manufacturer.

