

[2270-668]



DIRECTIONS

This product is designed for control of small flying insects: Flies, Gnats, Mosquitoes, and Flying Moths, adult Mediterranean Flour Weevil, Indian Meal Moth, and Angoumois Grain Weevil in their accessible stages.

Spray this product into entire room after closing off all air current. Spray should be directed upward at wall and ceilings so that as many insects as possible can be contacted with a direct vapor or mist. This product can be applied by means of a portable fogging device: Dyna Fog, Challenger or RVT Foggers. Application should be made so that the room is filled with mist.

Room should be kept closed at least ten minutes after spraying. Repeat as often as necessary to keep named insects under control. Periodic spraying of this product assists in the control of new infestations of named insects. Sweep up all dead and dying insects and destroy them at the close of the ten (10) minute period.

Infested stored products should be fumigated or treated by other effective methods using an accepted product intended for this purpose.

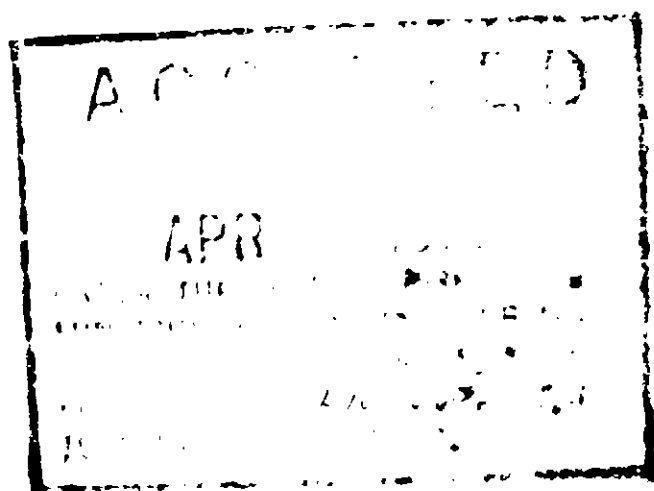
SPACE SPRAY NO. 8

ACTIVE INGREDIENTS	100%	
Petroleum Distillate		46.00%
Technical Piperonyl Butoxide*		3.20%
Pyrethrins		5.00%

*Equivalent to 2.56% active ingredient. Active ingredients in ether and 0.64% related compound.

EPA Reg. No. 2270-668

CAUTION:
KEEP OUT OF REACH OF CHILDREN
(See additional cautions on side panel)



THE HUGE COMPANY, INC.
Sanitation Consultants to the Food Industry
MANUFACTURERS OF
EXCELcide INSECTICIDES, RODENTICIDES AND EQUIPMENT
884-886 HODIAMONT AVE. • ST. LOUIS, MISSOURI 63112

DIRECTIONS

This product is designed for control of crawling insects: Ants and Silverfish, as well as stored product pests: Confused Flour Beetles, Red Flour Beetles, Rice Beetles, Caddis, Saw-Toothed Grain Beetles, Dermestid Beetles, and Carpet Beetles, in their accessible stages. Thoroughly clean all floor, grain, and food dusts from all contact surfaces, since these stages are most favorable for stored product pest breeding.

Spray this product with pump or trigger sprayer, or portable electric sprayer, into upper corners, under pipes, along walls, in nooks, under doors, window frames, and any other inaccessible areas. Spray outside of storage areas, under cars, and store rooms before use with stored food products. For control of ants, spray at the nest at regular intervals or as often as necessary to control the named insects.

This product also controls: Weevils, the Saw-Toothed Grain Beetle, Blackbeetles, and provides effective control of many other insect control.

CAUTION: Harmful to wildlife. Do not use this product in food processing plants, only when the plants are in operation. Foods should be removed or covered during treatment. All food processing surfaces should be covered or thoroughly cleaned before using. Do not remain in treated areas. Ventilate the area after treatment is completed.

Do not reuse empty drum. Return to drum conditioner or destroy by perforating or crushing and burying in a safe place away from water supplies.

NOTICE: Seller warrants that the product conforms to its chemical description and is reasonably fit for the purpose stated on the label, when used in accordance with directions under normal conditions of use. But neither this warranty, nor any other warranty of merchantability, or fitness for a particular purpose, express or implied, extends to the use of this product contrary to label instructions, or under abnormal conditions or under conditions not reasonably foreseeable to seller, and buyer assumes the risk of any purchase.