

DIRECTIONS

For Rats: Put liberal amounts of KRAFT FOODS PROLIN PLUS into shallow pans (4-6 tablespoonsful) on clean pasteboard, in fruit jar lids, in non-food processing areas or any rooms adjacent, KRAFT FOODS Prolin Plus should be dispensed in KRAFT FOODS Fibreboard, Wood or Metal Bait Boxes. Place the bait in locations habit-ed by the rats or near where the rats normally feed. Check all baits daily and keep containers full of bait. Continue to feed the rats until kill and control occurs. This usually takes from 5 to 14 days but may take longer. Minimum bait per station for rats is 4 ounces.

CONTINUOUS BAITING IS ESSENTIAL FOR RESULTS. Place baits in locations not accessible to children's pets and domestic animals, or in tamper-proof bait boxes. Where possible, choose clean, dry places for placement to avoid bait souring or decomposing.

For Mice: Follow the same directions as for rats ex-cept that bait placements may be smaller in size, and should be made in more places over infested areas. Baits should be placed not over 10 to 20 feet apart in infested areas for best results. Minimum bait per sta-tion for mice is about one tablespoon (1/4 to 1/2 ounce).

NOTICE

The Hugé Company, Inc. warrants that this product conforms to its chemical description and is reasonably fit for the purpose stated on the label when used in accordance with directions under normal conditions of use, but neither this warranty nor any other warranty of merchantability or fitness for a par-ticular purpose, express or implied, extends to the use of this product con-trary to label instructions, or under abnormal conditions, or under conditions not reasonably foreseeable to seller, and buyer assumes the risk of any such use.

KRAFT FOODS PROLIN PLUS RAT and MOUSE KILLER

READY-TO-USE
ANTI-COAGULANT

CAUTION:

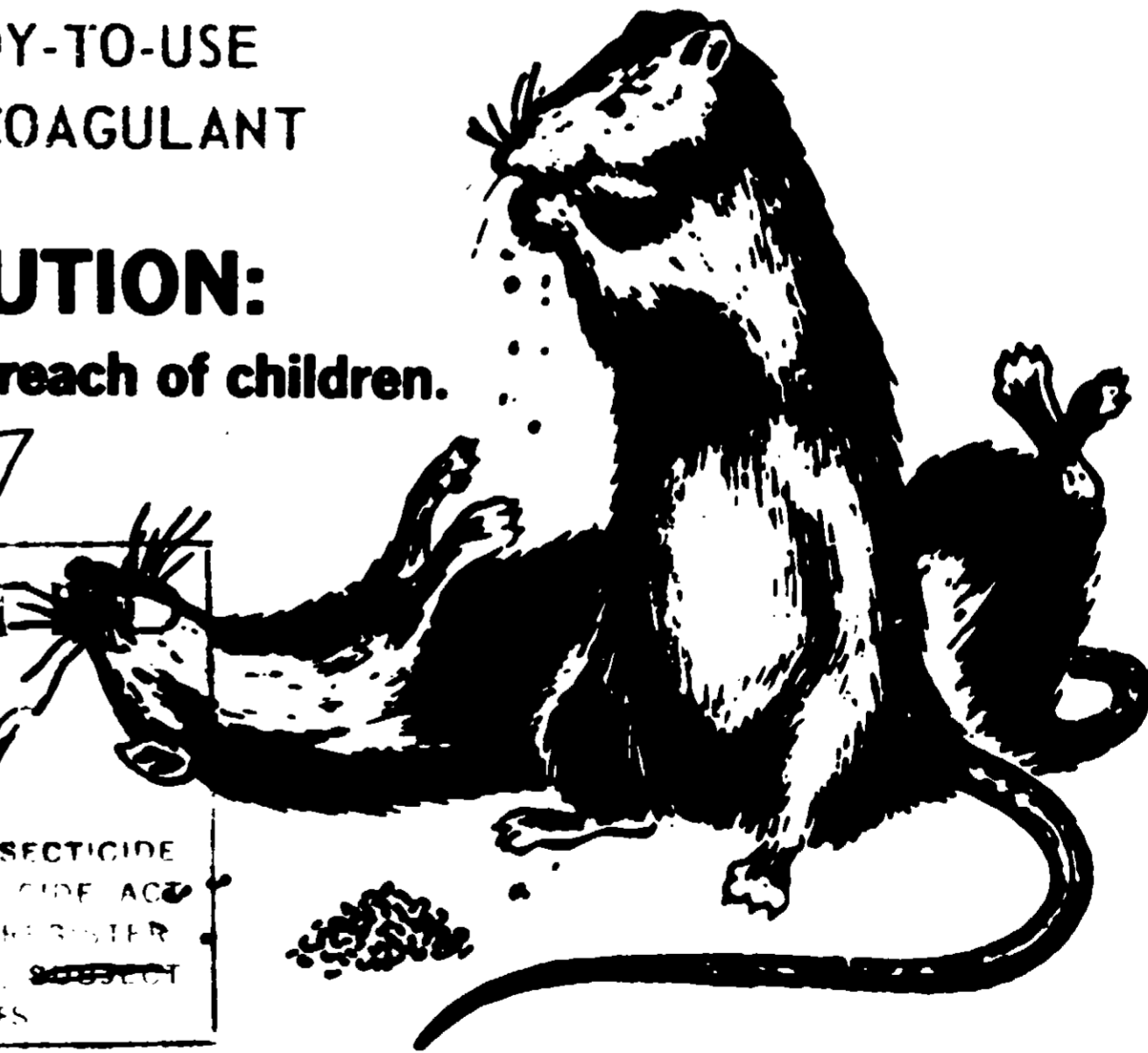
Keep out of reach of children.

2270-97

ACCEPTED

10-27-69

UNDER THE FEDERAL INSECTICIDE
FUNGICIDE AND RODENT GIDE ACT
FOR ECONOMIC PESTICIDE REGISTER
ED UNDER Net Weight ... SUBJECT
TO ATTACHED CONDITIONS



THE HUGE COMPANY, INC.

Sanitation Consultants to the Food Industry
MANUFACTURERS

EXCELCIDE INSECTICIDES, RODENTICIDES AND EQUIPMENT
884-886 HODIAMONT AVE. • ST. LOUIS, MISSOURI 63112

ACTIVE INGREDIENTS

- *Sulfaquinoxaline (N¹-sulfanilamide)
- *Warfarin 3-(α -acetyl)

INERT INGREDIENTS

- Rolled oats
- Steelcut oats
- Yellow corn meal
- Granulated sugar
- Corn oil
- Peanut oil
- Wheat germ oil
- Antioxidant

- *Prolin (R) - Registered Research

Caution - - This product is an anti-coagulant agent which acts by reducing the clotting ability of blood and humans, domestic animals. If ingested, PROTECT CHILDREN, FROM FEEDING CONTAINERS. If ingested, give a tablespoon of emetic and repeat until vomit immediately.

IMPO

NOTE FOR PHYSICIANS: If ingested, give a tablespoon of emetic and repeat until vomit immediately. Vitamin K are indicated for treatment of bleeding caused by overdoses of

USDA R

KRAFT FOODS

PROLIN PLUS

RAT and MOUSE KILLER

READY-TO-USE
ANTI-COAGULANT

CAUTION:

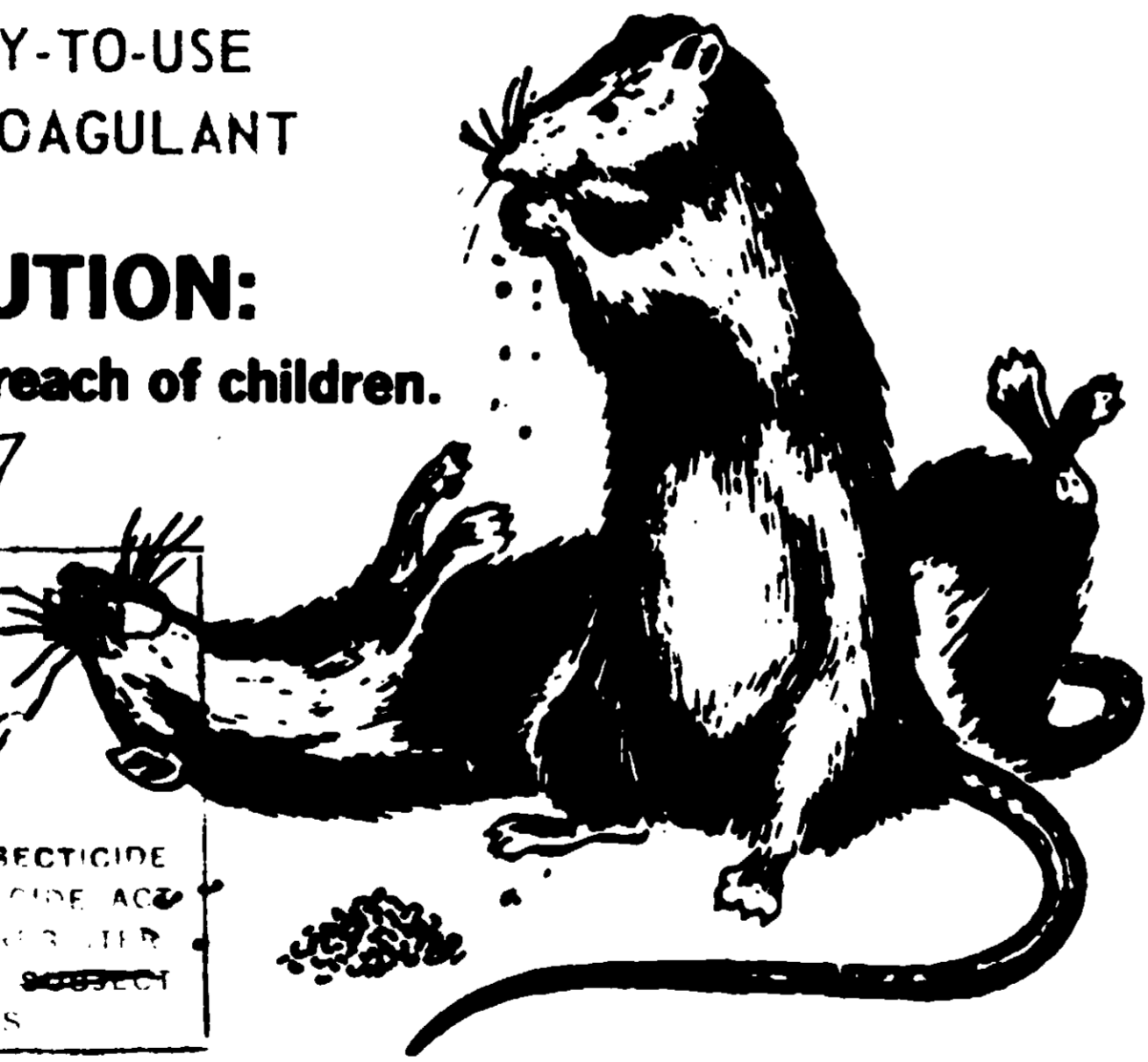
Keep out of reach of children.

2270-97

ACCEPTED

10-27-69

UNDER THE FEDERAL INSECTICIDE
FUNGICIDE AND RODENT GIDE ACT
FOR ECONOMIC POISON RESISTER
ED UNDER **Net Weight** ... SUBJECT
TO ATTACHED COMMENTS



THE HUGE COMPANY, INC.

Sanitation Consultants to the Food Industry

MANUFACTURERS

EXCELCIDE INSECTICIDES, RODENTICIDES AND EQUIPMENT

884-886 HODIAMONT AVE. • ST. LOUIS, MISSOURI 63112

ACTIVE INGREDIENTS 0.050%

- *Sulfaquinoxaline (N¹-(2-quinoxaliny) sulfanilamide) .025%
- *Warfarin 3-(a-acetonylbenzyl)-4-hydroxycoumarin .025%

INERT INGREDIENTS 99.950%

- Rollled oats
- Steelcut oats
- Yellow corn meal
- Granulated sugar
- Corn oil
- Peanut oil
- Wheat germ oil
- Antioxidant

*Prolin (R) - Registered trademark of Wisconsin Alumni Research Foundation

Caution - - This product contains as its active chemical an anti-coagulant agent which if taken continually by humans, domestic animals or pets may reduce the clotting ability of blood and internal hemorrhage may result. **PROTECT CHILDREN, PETS AND DOMESTIC ANIMALS FROM FEEDING CONTAINERS.** In case baits are eaten, give a tablespoon of salt in a glass of warm water and repeat until vomit fluid is clear. Call a physician immediately.

IMPORTANT NOTICE

NOTE FOR PHYSICIANS: When a human has been known to have ingested this product, blood transfusions combined with intravenous injections and oral doses of Vitamin K are indicated as in the case of hemorrhage caused by overdoses of Dicumarol.

USDA Registration No. 2270-97

FOODS PROLIN
eful) on clean
od processing
DS Prolin Plus
reboard, Wood
ications habit-
normally feed.
s full of bait.
ontrol occurs.
but may take
s is 4 ounces.

FOR RESULTS.
to children's
nper-proof bait
dry places for
osing.

as for rats ex-
er in size, and
infested areas.
10 feet apart in
m bait per sta-
l to 1/2 ounce).

is to its chemical
n the label when
of use, but neither
fitness for a par-
this product con-
under conditions
the risk of any