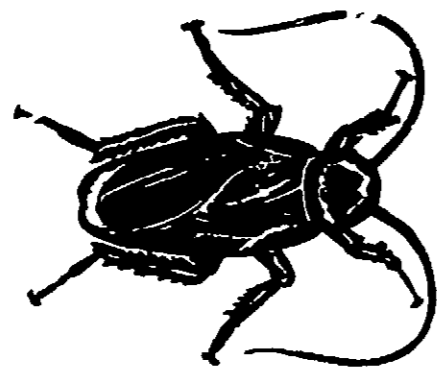


**DIRECTIONS:** This product is a ready-to-use formula, needing no dilution. To control existing cockroach infestations: American Cockroach, German Cockroach, and Oriental Cockroach, and to protect against roach reinfestations, spray this product over and into cracks and crevices. Treatment should be confined basically to wall-floor junctures, bases of equipment, and under surfaces of skids. Approximately 20% of wall and floor surfaces should be covered. Make sure that ALL breeding sites and harborages are thoroughly wetted down with the insecticide to a point where these surfaces are glistening wet, and yet do not run. This should be at the rate of about 1 gal. per 1,000 sq. ft. This wetting down residual application can best be achieved through a low-pressure, conventional garden-type tank sprayer.



For control of existing flying insects (Houseflies, Drosophila Gnats, Mosquitoes, and exposed stages of Indian Meal Moths, Mediterranean Flour Moths, and Angoumois Grain Moths) through residual application of this product should be applied in a residual wetting-down treatment to surfaces on which the insects alight or crawl. This application should be only in areas where the affected insect will not drop into food or onto food surfaces.



For control of exposed stages of stored product insects: Confused Flour Beetles, Saw-Toothed Grain Beetles, Caddises, and Moth Larvae, apply this product residually as directed above for cockroach control, using the same principle of laying down a residual deposit that will continue to kill for days after application. Since these insects harbor and breed in flour and food dust, such deposits must be vacuumed and cleaned before making application.

**WARNING:** Do not get in eyes, on skin, or on clothing. May be harmful if swallowed, inhaled or absorbed through the skin. In case of contact, wash immediately with soap and water.

Apply so that no contamination will occur of food or food handling surfaces. Confine usage to interior of plant, and to exterior plant building structure (outside walls and dock areas). Avoid excessive wetting of asphalt tile, rubber and plastic materials. Do not use in areas where children or pets can come into direct contact with treated surface. Remains from container should not be disposed into water supplies. Empty containers should be permanently destroyed, thoroughly washed, or reconditioned.

**NOTICE:** The manufacturer and seller warrant that this product conforms to its chemical description and is reasonably fit for the purpose stated on the label when used in accordance with directions under normal conditions of use, but neither this warranty nor any other warranty of merchantability or fitness for a particular purpose express or implied, extends to the use of this product contrary to label instructions, or under abnormal conditions or under conditions not reasonably foreseeable to seller and buyer assumes the risk of any such use.



APPROVED WITH RESERVATIONS

SHS 14, 1952  
 WASHINGTON