

2270-84

DIRECTIONS

For use as a contact spray for control of the exposed stages of stored product insects: Confused Flour Beetles, Indian Meal Moths, Angoumois Grain Moths, Cadelle Beetles, Dermestid Beetles.

To control the above named crawling insects EXCELCLIDE CMS SPRA NO. 3 should be diluted one part of concentrate with four parts water, and applied at the rate of one gallon of the diluted spray to 750 square feet of surface to be treated. Application is best made with a tank-type sprayer, with a fan pattern nozzle, so that the treated surface will be left glistening wet and yet not "running".

NOTE: Water base solutions should be mixed only as needed, and should be agitated frequently while being used. DO NOT STORE THE DILUTED SOLUTION!

This formula should not be fogged or space sprayed.

CMS SPRA NO. 3 is a water emulsifiable concentrate of Pyrethrins plus two Synergists. This pyrethrin formula is designed for application in the mill. Care must be taken to avoid contamination of foods and food processing equipment.

NOTICE: The manufacturer warrants that this product conforms to its chemical description and is reasonably fit for the purpose stated on the label when used in accordance with directions under normal conditions of use, but neither this warranty nor any other warranty of merchantability or fitness for a particular purpose, express or implied, extends to the use of this product contrary to label instructions, or under abnormal conditions, or under conditions not reasonably foreseeable to seller, and buyer assumes the risk of any such use.



"EXCELCLIDE"

CMS SPRA NO.3

**A SYNERGIZED PYRETHRIN CONCENTRATE
TO BE DILUTED WITH WATER**

ACTIVE INGREDIENTS:

Petroleum Distillate	80.17%
N-Octyl bicycloheptenedicarboximide	1.67%
Technical Piperonyl Butoxide*	1.00%
Pyrethrins	50%

INERT INGREDIENTS: 16.66%

*Equivalent to .80% (butylcarbityl) (6-propylpiperonyl) ether and .20% related compounds.

CAUTION

KEEP OUT OF REACH OF CHILDREN

HARMFUL IF SWALLOWED

(See additional cautions on side panel)

THE HUGE COMPANY, INC.

Sanitation Consultants to the Food Industry

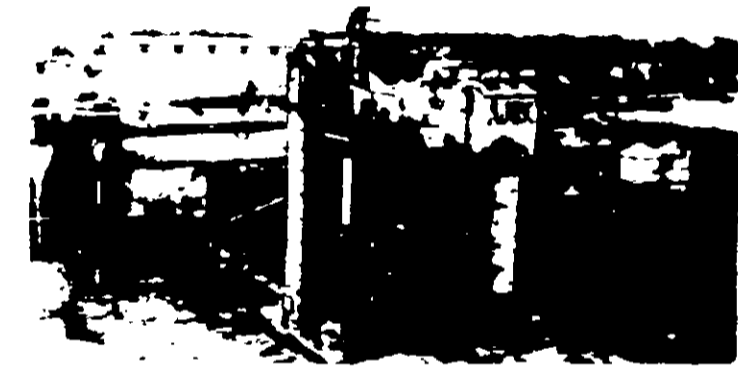
MANUFACTURERS OF

EXCELCLIDE INSECTICIDES, RODENTICIDES AND EQUIPMENT

884-886 HODIAMONT AVE. • ST. LOUIS, MISSOURI 63112

CAUTION

Harmful if swallowed. Avoid breathing of spray mist. Avoid contact with skin; wash thoroughly after using and before eating or smoking. Avoid contamination of feed and foodstuffs. Foods should be removed or covered during treatment or thoroughly cleaned before using. When using the product in



these areas, apply only when the facility is not in operation. Do not use this product for post-harvest application directly to cotton seed. Keep out of reach of children. Do not use near flame. This product is not intended for household use. Use this product only as specified on this label.

CONTAINER DISPOSAL

Do not reuse empty container. Destroy it by perforating or crushing. Bury or discard in a safe place away from water supplies.

EPA Registration No. 2270-84