



U.S. ENVIRONMENTAL PROTECTION AGENCY

Office of Pesticide Programs
Registration Division (7505T)
1200 Pennsylvania Ave., N.W.
Washington, D.C. 20460

EPA Reg. Number:

2217-1073

Date of Issuance:

11/4/22

NOTICE OF PESTICIDE:

Registration
 Reregistration
(under FIFRA, as amended)

Term of Issuance:

Unconditional

Name of Pesticide Product:

EH-1666 HERBICIDE

Name and Address of Registrant (include ZIP Code):

PBI/Gordon Corporation
22701 W. 68th Ter.
Shawnee, KS 66226

Note: Changes in labeling differing in substance from that accepted in connection with this registration must be submitted to and accepted by the Registration Division prior to use of the label in commerce. In any correspondence on this product always refer to the above EPA registration number.

On the basis of information furnished by the registrant, the above named pesticide is hereby registered under the Federal Insecticide, Fungicide, and Rodenticide Act (FIFRA).

Registration is in no way to be construed as an endorsement or recommendation of this product by the Agency. In order to protect health and the environment, the Administrator, on his motion, may at any time suspend or cancel the registration of a pesticide in accordance with the Act. The acceptance of any name in connection with the registration of a product under this Act is not to be construed as giving the registrant a right to exclusive use of the name or to its use if it has been covered by others.

This product is unconditionally registered in accordance with FIFRA section 3(c)(5) provided that you:

1. Submit and/or cite all data required for registration/reregistration/registration review of your product when the Agency requires all registrants of similar products to submit such data.
2. The data requirements for storage stability and corrosion characteristics (Guidelines 830.6317 and 830.6320) are not satisfied. You have 18 months from the date of registration to provide these data.

Continues page 2

Signature of Approving Official:

Emily Schmid, Product Manager 25
Herbicide Branch, Registration Division (7505P)

Date:

11/4/22

3. Make the following label changes before you release the product for shipment:
 - Revise the EPA Registration Number to read, “EPA Reg. No. 2217-1073.”
4. Submit one copy of the final printed label for the record before you release the product for shipment.

Should you wish to add/retain a reference to the company’s website on your label, then please be aware that the website becomes labeling under FIFRA and is subject to review by the Agency. If the website is false or misleading, the product would be misbranded and unlawful to sell or distribute under FIFRA section 12(a)(1)(E). 40 CFR 156.10(a)(5) lists examples of statements EPA may consider false or misleading. In addition, regardless of whether a website is referenced on your product’s label, claims made on the website may not substantially differ from those claims approved through the registration process. Therefore, should the Agency find or if it is brought to our attention that a website contains false or misleading statements or claims substantially differing from the EPA approved registration, the website will be referred to the EPA’s Office of Enforcement and Compliance.

If these conditions are not complied with, the registration will be subject to cancellation in accordance with FIFRA section 6. Your release for shipment of the product constitutes acceptance of these conditions. A stamped copy of the label is enclosed for your records.

The record for this product currently contains the following CSF(s):

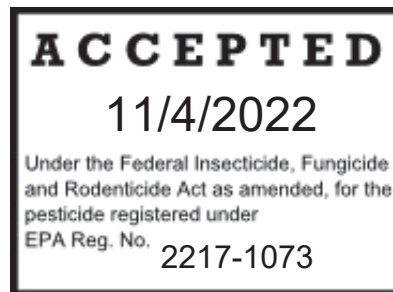
- Basic CSF dated 7/19/2021
- Alternate CSF 1 dated 7/19/2021

If you have any questions, please contact Sarah Meadows at 202-566-2828 or at meadows.sarah@epa.gov.

Enclosure

EH-1666 HERBICIDE

EPA Reg. No. 2217-XXXX



Alternate Brand Names:

ACTIVE INGREDIENT:

Pyrimisulfan	0.0124%
OTHER INGREDIENTS:	99.9876%
TOTAL	100.0000%

THIS PRODUCT CONTAINS:

0.0010 lb Pyrimisulfan per gallon or 0.0124%

KEEP OUT OF REACH OF CHILDREN

CAUTION

STOP! READ THE ENTIRE LABEL FIRST. OBSERVE ALL PRECAUTIONS AND FOLLOW DIRECTIONS CAREFULLY.

See [back panel] [side panel] for complete Precautionary Statements, including First Aid and Directions for Use, including Storage and Disposal.

Net Contents: _____
EPA Est. No. _____

Company Name and Address:
PBI/Gordon Corporation
P.O. Box 860350
Shawnee, Kansas 66286



PRECAUTIONARY STATEMENTS

Hazards to Humans and Domestic Animals

CAUTION: Harmful if swallowed. Causes moderate eye irritation. Remove and wash contaminated clothing before reuse. Avoid contact with eyes or clothing. Wash thoroughly with soap and water after handling and before eating, drinking, chewing gum, using tobacco, or using the toilet.

First Aid	
If swallowed:	<ul style="list-style-type: none">• Call a poison control center or doctor immediately for treatment advice.• Have person sip a glass of water if able to swallow.• Do not induce vomiting unless told to do so by a poison control center or doctor.• Do not give anything by mouth to an unconscious person
If in eyes:	<ul style="list-style-type: none">• Hold eye open and rinse slowly and gently with water for 15 - 20 minutes.• Remove contact lenses, if present, after the first 5 minutes, then continue rinsing eye.• Call a poison control center or doctor for treatment advice.
Have the product container or label with you when calling a poison control center or doctor or going for treatment. You may also contact 1-877-800-5556 for emergency medical treatment information.	

Environmental Hazards

To protect the environment, do not allow pesticide to enter or run off into storm drains, drainage ditches, gutters or surface waters. Applying this product in calm weather when rain is not predicted for the next 24 hours will help to ensure that wind or rain does not blow or wash pesticide off the treatment area.

DIRECTIONS FOR USE

It is a violation of Federal law to use this product in a manner inconsistent with its labeling.

Do not apply this product in a way that will contact any person or pet, either directly or through drift. Keep people and pets out of the area during application. Do not allow people or pets to enter the treated area until spray has dried.

1. Product Description

EH-1666 HERBICIDE is a selective herbicide for post-emergent control of listed broadleaf weeds, sedges, kyllinga, and rush species commonly found in turfgrasses. It can be used on established warm-season turfgrasses (including improved varieties of St. Augustinegrass) and cool-season turfgrasses. Fall applications provide control of winter weeds such as henbit, false dandelion, creeping charlie (ground ivy), and chickweed.

2. Weeds Controlled

EH-1666 HERBICIDE will control the following weeds:

Sedges, Kyllinga, and Rushes (including ALS resistant annual sedges)

Yellow Nutsedge	Green Kyllinga	Annual Kyllinga *
Purple Nutsedge	False Green Kyllinga	Path Rush
Annual Nutsedge *	Cockscomb Kyllinga	

Broadleaf Weeds

Buckhorn Plantain	Creeping Charlie (Ground Ivy)	False Dandelion
Common Chickweed	Dollarweed (Pennywort)	Florida Betony *

Hairy Bittercress
Henbit
Lawn Burweed

Purple Deadnettle *
Virginia Buttonweed *
Wild Garlic

Wild Onion

[* Not for use in California]

[3. How To Identify Nutsedge

Yellow Nutsedge and Purple Nutsedge are common weeds in residential lawns. They are sometimes referred to as Nutgrass or Watergrass. They have distinctive characteristics that make them easy to identify. Both weeds become visible in a lawn during the summer. The leaves are glossy, light green, hairless, and usually grow faster than the surrounding turf. Stems are distinctly triangular. Leaves are arranged in groups of three and are V-shaped with a prominent midrib.]

[Optional graphic of nutsedge plant and identifying characteristics.



4. Where To Use

Ornamental turfgrass established around residential dwellings and buildings and other non-cropland sites.

The following established turfgrass species may be treated:

- **Cool-Season Species:** Kentucky bluegrass, fine fescues, tall fescue, perennial ryegrass, bentgrass.
- **Warm-Season Species:** Bermudagrass (common or hybrid), bahiagrass, buffalograss, centipedegrass, kikuyugrass, seashore paspalum, St. Augustinegrass (including improved varieties such as Bitterblue and Floratam), zoysiagrass.

Use Restrictions:

- Do not apply as a fine mist because of potential drift onto desirable plants.
- Do not use on Carpetgrass, Dichondra, food crops (gardens, fruits, and vegetables), forage crops, or ornamental plants (flowers, trees, shrubs, hedges, woody ornamentals, groundcovers, groundcovers established in landscape plantings), and turfgrass species that are not listed on this label.
- Do not collect grass clippings from treated turfgrass for use as mulch around plants or compost.
- The maximum application rate is 1 gallon of product per 1,000 sq.ft. per application [(equivalent to 0.044 lb pyrimisulfan per acre per application)]. Retreatment after 30 days is allowed but do not exceed more than 2 gallons of product per 1,000 sq.ft. per year [(equivalent 0.087 lb pyrimisulfan per acre per year)].

5. When To Use

- **To control sedge and kyllinga:** when weeds are actively growing, typically from May through September.
- **To control winter annual broadleaf weeds (henbit, false dandelion, chickweed, and purple deadnettle):** for best control, apply in early fall.
- Hard to kill weeds may require a repeat application in 30 days.

6. For Best Results

- Temperatures below 50°F will reduce weed control activity.

- Warm moist conditions at the time of application will improve weed control.
- Delay mowing 1 to 2 days before and after the application of this product.
- Length of time to wait to apply product after seeding, sodding, sprigging, or plugging: 3 weeks after turf seedling emerges or 3 weeks after sodding, sprigging, or plugging.
- Length of time to wait to seed, sod, sprig, or plug after applying product: 3 weeks after applying product.

[optional statements for different container sizes]

- [This 32 fl.oz. [(1.0 quart)] [retail] container treats approximately 250 weeds or up to 250 sq.ft.]
- [This 128 fl.oz. [(1.0 gallon)] [retail] container treats approximately 1,000 weeds or up to 1,000 sq.ft.]
- [This 1.33 gallon [retail] container treats approximately 1,300 weeds or up to 1,300 sq.ft.]

[7. Sprayer Instructions

[For non-battery operated sprayers

1. Shake well before each use.
2. Adjust nozzle to narrow fan spray, to prevent excessive wetting and waste of product. Spray just enough to cover area to be treated]

[for Battery-Operated Trigger Sprayers:

1. Remove wand from side clip.
2. Pull connector by slightly twisting from holder and unwrap hose completely.
3. Loosen screws of battery cover.
4. Remove the insulation strip.
5. Tighten screws again.
6. Remove cover from cap and insert plug end of hose into knob opening on cap until it clicks.
7. Flip open wand until it clicks and locks into position. Extend wand fully.
8. Slide trigger lock on wand handle to the unlocked position.
9. Twist nozzle toward STREAM until medium-coarse droplets are delivered.

[Optional graphics depicting droplet size]

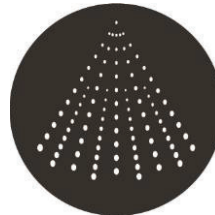
Heavy Droplets



Medium-Coarse Droplets



Fine mist (for comparison)



How to use the battery operated sprayer:

1. Point nozzle away from body and hold trigger for continuous spray.
2. Hold tip of wand approximately 12-18 inches away from the target weed and spray to wet.
3. Release the trigger to stop spray.

Important Use Information: Do not submerge in water. When storing sprayers for long periods, remove batteries.]

How to Refill:

[Option 1] [For Ready-To-Use Containers with Applicators Intended to be Reused/Refilled

To refill this product, use the EH-1666 HERBICIDE refill, and carefully pour the entire contents of the 1.33 gal [XXX fl.oz./XXX gal] refill bottle [container] directly into this empty ready-to-use container equipped with spray applicator. DO NOT add water.]

[Option 2] [For Ready-To-Use Containers with Applicators Intended to be Reused/Refilled]

1. Remove the cap from the EH-1666 HERBICIDE refill bottle.
2. Remove the sprayer wand, cap with attached tube, and holster from the original bottle of EH-1666 HERBICIDE.
3. Insert cap with attached tube into the refill bottle.
4. Attach the sprayer wand and holster onto the refill bottle.
5. Screw sprayer tube on tightly
6. Proceed as before.]

[7. Sprayer Instructions (for Scotts products)]

[Directions For Use Options Based On Applicator]

[Option 1: Conventional Trigger Small RTU]

[Applicator (Device) (Applicator Name) Directions/Instructions]

HOW TO USE:

Spray

1. Turn sprayer nozzle to desired spray.
2. Squeeze trigger repeatedly to spray.

Finish

1. Turn sprayer nozzle to "OFF" [X]

[Option 2: Conventional Trigger Large RTU]

[Applicator (Device) (Applicator Name) Directions/Instructions]

HOW TO USE:

Spray

1. Remove sprayer from bottle by sliding [pulling] sprayer up.
2. Unwrap [uncoil] hose and insert [color] hose connector into [color] spout on [bottle] cap/knob/lid/opening **until it clicks.**
3. [Flip up [color] spout until fully upright] [Twist/turn spout/knob to "ON"] [Pull spout up].
4. Turn sprayer nozzle to desired spray [pattern].
5. Squeeze trigger repeatedly to spray.

Finish

1. Turn/twist sprayer nozzle to "OFF" [X].
2. [Push/turn/twist cap/knob/spout to "OFF" [X]/[Flip spout closed.]
3. **DO NOT DISCONNECT HOSE CONNECTOR FROM SPOUT/CAP/KNOB/OPENING.**
4. Place sprayer back into holster [holder].

[Option 3 - Pull 'N Spray® II]

[Applicator (Device) (Applicator Name) Directions/Instructions]

HOW TO USE:

Spray

1. Remove sprayer from holster [holder].
2. Unwrap [uncoil] hose and insert [color] hose connector into [color] spout on bottle cap/knob/lid/opening **until it clicks.**
3. [Flip up [color] spout until fully upright] [Twist/turn spout/knob to "ON"] [Pull spout up].
4. Turn sprayer nozzle to desired spray [pattern].

5. Point sprayer away from body. Slowly pull ring at bottom of sprayer until it stops, and hold for two [2] seconds to fill sprayer.
6. Press trigger to spray.

Finish

1. Turn/twist sprayer nozzle to "OFF" [X].
2. [Push/turn/twist cap/knob/spout to "OFF" [X]/ [flip spout closed.]
3. DO NOT DISCONNECT HOSE CONNECTOR FROM SPOUT/CAP/KNOB/OPENING.
4. Place sprayer back into holster [holder].

[Optional illustrations may be used in conjunction with the above steps]
 Pull N Spray Images:



[End Optional illustrations]

Optional Refill/Reuse Directions

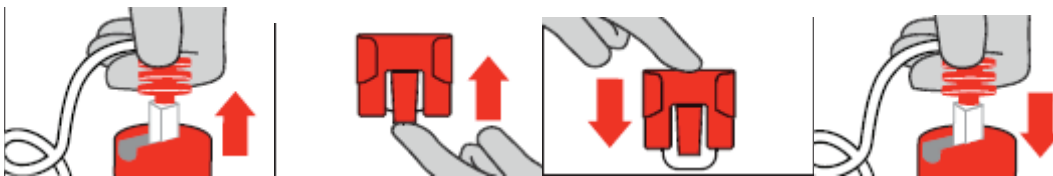
[The Pull 'N Spray II/Applicator Name [applicator/sprayer/wand] may be reused with the available EH-1666 Herbicide/Product Name refill bottle/container. Read and follow instructions in Reuse Directions to reuse the applicator.]

Refill/Reuse Directions

How to attach the [Pull 'N Spray II/Applicator Name] [applicator/sprayer/wand] to EH-1666 Herbicide /Product name [refill bottle]:

[Refill only with [Product Name]. Carefully pour the entire contents of the 1.33 gal [XXX fl.oz./XXX gal] refill bottle [container] directly into this [empty ready-to-use] container equipped with spray applicator. DO NOT add water. Securely replace cap. Wipe container clean of any spilled product.]

[Optional illustrations may be used in conjunction with the above steps]
 Wand/Pull Spray Refill Images:



[End Optional illustrations]

[Note to Reviewer: Image of cap may vary, depending upon design.]

Removing [color] hose from original bottle/container:

	<p>[To remove the side holster [holder] from original bottle/container, pull [lift] the bottom tab underneath and slide the holster [holder] up.]</p>
	<p>[Attach the sprayer holster [holder] to EH-1666 Herbicide /Product Name] refill bottle/container by sliding the holster [holder] down onto the knob.]</p> <p>Insert [color] hose connector into [color] spout on cap <u>until it clicks.</u></p>

[Optional illustrations may be used in conjunction with the above steps]

[Option 4 – Battery Powered Wand/Comfort Wand]

[[Applicator Name] [Applicator/Wand] Directions]

HOW TO USE:

Prep [Wand]

1. Remove sprayer [Applicator Name] from holster [holder].
2. [Remove [color] pull strip to activate batteries].
3. Unfold [Flip Open] [Applicator Name] [wand] until it clicks [locks] into position.

Connect

1. Unwrap [uncoil] hose and insert [color] hose connector into [color] spout/knob/opening/lid on [bottle] cap **until it clicks**.
2. [Flip up [color] spout/knob until fully upright.] [Twist/turn spout/knob to “ON”.] [Pull spout up].

Spray

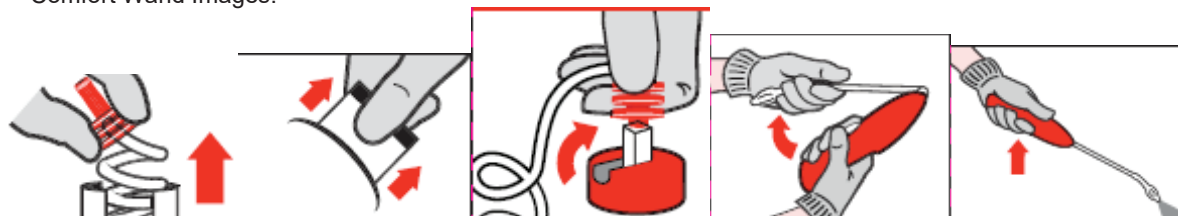
1. Turn sprayer nozzle to desired spray [pattern].
2. [Slide [color] switch on trigger to “Unlock” [illustration]].
3. Press trigger to spray.

Finish

1. Turn [sprayer] nozzle to “OFF” [X].
2. [Slide [color] switch on trigger to “Lock” [illustration]].
3. [Push/turn/twist cap/knob/spout to “OFF” [X]/ [Flip spout closed].
4. Fold [Applicator Name] wand closed and place sprayer back in holster [holder].

[Optional illustrations may be used in conjunction with the above steps]

Comfort Wand Images:



[End Optional illustrations]

Important Use Information: Do not submerge in water. When storing sprayer for long periods, remove batteries.

[To replace batteries: See marked diagram inside battery compartment.]

Optional Refill/Reuse Directions

[The Comfort Wand/Applicator Name [applicator/sprayer/wand] may be reused with EH-1666 Herbicide/Product Name refill bottle/container. Read and follow instructions in Reuse Directions to reuse the applicator.]

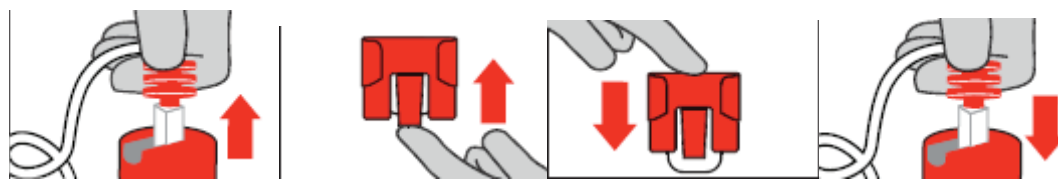
Refill/Reuse Directions

How to attach the [Comfort Wand/Applicator Name] [applicator/sprayer/wand] to EH-1666 Herbicide/Product Name [refill bottle]:

[Refill only with [EH-1666 Herbicide]. Carefully pour the entire contents of the 1.33 gal [XXX fl.oz./XXX gal] refill bottle [container] directly into this [empty ready-to-use] container equipped with spray applicator. DO NOT add water. Securely replace cap. Wipe container clean of any spilled product.]

[Optional illustrations may be used in conjunction with the above steps]

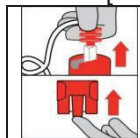
Wand/Pull Spray Refill Images:



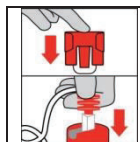
[End Optional illustrations]

[Note to Reviewer: Image of cap may vary, depending upon design.]

Remove [color] hose connector from original bottle/container:



[To remove the side holster [holder] from original bottle/container, pull [lift] the bottom tab underneath and slide the holster [holder] up.]



[Attach the sprayer holster [holder] to EH-1666 Herbicide /Product Name] refill bottle/container by sliding the holster [holder] down onto the knob.]

Insert [color] hose connector into [color] spout on cap until it clicks.

[Optional illustrations may be used in conjunction with the above steps]

[For Nonrefillable Container without refill use directions]

STORAGE AND DISPOSAL

PESTICIDE STORAGE: Keep from freezing. Store in original container in a locked storage area inaccessible to children and pets.

PESTICIDE DISPOSAL AND CONTAINER HANDLING: Nonrefillable container. Do not reuse or refill this container. **If empty:** Place in trash or offer for recycling if available. **If partly filled:** Call your local solid waste agency for disposal instructions. Never place unused product down any indoor or outdoor drain.

[For Nonrefillable Container with reusable applicator use directions]

STORAGE AND DISPOSAL

PESTICIDE STORAGE: Keep from freezing. Store in original container in a locked storage area inaccessible to children and pets.

PESTICIDE DISPOSAL AND CONTAINER HANDLING: [Applicator Name] can be reused with [Product Name refill bottle/container]. Follow instructions in the Reuse Directions when reusing [applicator name]. Nonrefillable container. Do not reuse or refill this container. **If empty:** Place in trash or offer for recycling if available. **If partly filled:** Call your local solid waste agency for disposal instructions. Never place unused product down any indoor or outdoor drain.

LIMITED WARRANTY AND DISCLAIMER

FOR USE ONLY AS DIRECTED. TO THE EXTENT CONSISTENT WITH APPLICABLE LAW, THE MANUFACTURER NEITHER MAKES NOR INTENDS ANY EXPRESS OR IMPLIED WARRANTIES, INCLUDING ANY WARRANTY OF MERCHANTABILITY OR FITNESS FOR A PARTICULAR PURPOSE, WHICH ARE HEREBY EXPRESSLY DISCLAIMED. TO THE EXTENT CONSISTENT WITH

APPLICABLE LAW, IN NO CASE SHALL THE MANUFACTURER BE LIABLE FOR INCIDENTAL, CONSEQUENTIAL, OR SPECIAL DAMAGES RESULTING FROM THE USE OR HANDLING OF THIS PRODUCT. If these terms are not acceptable, return this product unopened immediately to the point of purchase, and the purchase price will be refunded in full. The terms of this LIMITED WARRANTY STATEMENT cannot be varied by any written or verbal statements or agreements at the point of sale or elsewhere.

[Back Panel]

Quickly kills sedges, kyllinga, and broadleaf weeds, as listed.

Getting Started

[What It Does/Kills/Controls]: Controls yellow and purple nutsedge, kyllinga, henbit, false dandelion and chickweed.

Where To Use: On residential [home] lawns.
Won't harm lawns, when used as directed.

When To [Use/Apply]: Spray when weeds are actively growing for best results. Apply in the fall to control winter weeds, as listed.

For questions or comments call toll-free 800.884.3179 Mon.-Fri. 8:00 a.m. – 4:30 p.m. CST or visit: GordonsUSA.com

APPENDIX

1. Advertising claims that may be presented on container labeling, advertisements, brochures, and other marketing/sales promotional materials:

- Apply in the fall to control [kill] winter weeds such as henbit, false dandelion and chickweed
- Kill [Control] winter weeds including henbit, false dandelion and chickweed with a fall application
- Provides [Delivers] [Offers] post-emergence control of listed broadleaf weeds, sedges, and kyllinga
- Can be used on established warm-season turfgrasses and cool-season turfgrasses as listed
- Provides [Delivers] [Offers] dependable [season-long] [120-day] [4-month] nutsedge and kyllinga control
- 3-week reseed/resod interval
- Reseed/resod in just three weeks
- Short reseed/resod interval: 3 weeks
- Reseed/resod in just 21 days
- Can be used on [Bermudagrass][St. Augustinegrass]
- Labeled for use on [Bermudagrass][St. Augustinegrass]
- Can be used on many turfgrass species as listed [list species]
- Provides [Delivers] [Offers] [excellent] control of sedges and kyllinga
- Kills sedges and kyllinga fast [quickly]
- Visible results in [X] hours
- Provides [Delivers] [Offers] fast [rapid] [quick] control of sedges and kyllinga
- Dependable control of sedges and kyllinga
- A wide range of labeled use sites for versatile application options
- Multiple applications are allowed
- No maximum temperature restriction allows for application when sedges are most active
- Simple [Easy-to-read] label
- Label instructions are simple to read and easy to understand
- [Kills] [Controls] dollarweed

- [Kills] [Controls] yellow nutsedge
- [Kills] [Controls] purple nutsedge
- [Kills] [Controls] yellow nutsedge [and purple nutsedge][and dollarweed] without damaging most lawn grasses when used as directed
- [Kills] [Controls] yellow nutsedge, purple nutsedge, kyllinga species, and broadleaf weeds
- [Works] [Treats] below the ground [soil surface] to reduce [tubers] [nutlets] for extended nutsedge control
- For use on cool-season and warm-season grasses
- For use on [residential] lawns
- [For best results], apply when weeds are actively growing
- Getting Started
- Kills listed weeds
- Controls listed weeds
- Where to use/apply
- How much to use/apply
- How to use/apply
- When to use/apply
- Amount to use
- For questions or comments call toll-free 800.884.3179 Mon.-Fri. 8:00 a.m. – 4:30 p.m. CST-or visit: GordonsUSA.com
- Powered by Vexis [Technology]
- Rainfast in [2][3] hours

Applicator Claims:

- Easy to use [sprayer]
- Continuous [action] power sprayer
- Press and hold technology
- [Just] Aim & spray
- Comfort-Power-Precision
- With [extendable][adjustable] wand [for improved accuracy]
- Reduced hand fatigue [when spraying around entire home]
- [X] AA batteries included
- [Easy-to-Use] Refill [Available]
- For use with reusable sprayer
- Continuous Spray
- Continuous Wand Sprayer
- [Convenient], [Easy-to-use] Sprayer [Application]
- [For] Convenient Application

DOCUMENT CONTROL INFORMATION

1. Unique Label Identifier: 002217-0XXXX.20221102.new-proposed-EH1666-clean.doc

2. Reason for Issue: New registration + EPA Comments #1, label comment revisions