



**UNITED STATES ENVIRONMENTAL PROTECTION AGENCY  
WASHINGTON, DC 20460**

**OFFICE OF CHEMICAL SAFETY  
AND POLLUTION PREVENTION**

July 27, 2022

Eric D. Smith  
Director, Regulatory Affairs  
PBI/Gordon Corporation  
P.O. Box 860350  
Shawnee, KS 66286

**Subject:** Notification per PRN 98-10 – Add optional marketing claims, update registrant address, and update and relocate referral statement  
Product Name: EH 1449 READY-TO-USE  
EPA Registration Number: 2217-991  
Application Date: December 13, 2021  
Decision Number: 583735

Dear Mr. Smith:

The Agency is in receipt of your Application for Pesticide Notification under Pesticide Registration Notice (PRN) 98-10 for the above referenced product. The Registration Division (RD) has conducted a review of this request for its applicability under PRN 98-10 and finds that the action requested falls within the scope of PRN 98-10. The label submitted with the application has been stamped “NOTIFICATION” and placed in our records.

Should you wish to add/retain a reference to the company’s website on your label, then please be aware that the website becomes labeling under the Federal Insecticide, Fungicide, and Rodenticide Act (FIFRA) and is subject to review by the Agency. If the website is false or misleading, the product would be misbranded and unlawful to sell or distribute under FIFRA section 12(a)(1)(E). 40 CFR 156.10(a)(5) lists examples of statements EPA may consider false or misleading. In addition, regardless of whether a website is referenced on your product’s label, claims made on the website may not substantially differ from those claims approved through the registration process. Therefore, should the Agency find or if it is brought to our attention that a website contains false or misleading statements or claims substantially differing from the EPA approved registration, the website will be referred to the EPA’s Office of Enforcement and Compliance.

If you have any questions, please contact Endia Blunt at 202-566-2505 or at [blunt.endia@epa.gov](mailto:blunt.endia@epa.gov).

Sincerely,

A handwritten signature in cursive script that reads "Mindy Ondish".

Mindy Ondish  
Product Manager 23  
Herbicide Branch  
Registration Division (7505T)  
Office of Pesticide Programs

# EH-1449 READY-TO-USE

## EPA Reg. No. 2217-991

### NOTIFICATION

2217-991

The applicant has certified that no changes, other than those reported to the Agency have been made to the labeling. The Agency acknowledges this notification by letter dated:

07/27/2022

#### ACTIVE INGREDIENT:

2,4-D, dimethylamine salt .....	0.313%
Quinclorac .....	0.104%
Dicamba, dimethylamine salt .....	0.029%
OTHER INGREDIENTS: .....	<u>99.554%</u>
TOTAL .....	100.000%

#### THIS PRODUCT CONTAINS:

- 2,4-dichlorophenoxyacetic acid equivalent, 0.260%
- 3,7-dichloro-8-quinolinecarboxylic acid, 0.104%
- 3,6-dichloro-o-anisic acid equivalent, 0.024%

Isomer Specific By AOAC Methods.

Note: If the design, format, or small size of the container labels makes it impractical to present the entire ingredient statement on the front panel, then add a referral statement and present this substatement on the back panel: **“See back panel for substatement of ingredient statement”**.

### KEEP OUT OF REACH OF CHILDREN

### CAUTION

**STOP! READ THE ENTIRE LABEL FIRST. OBSERVE ALL PRECAUTIONS AND FOLLOW DIRECTIONS CAREFULLY.**

See back [next] panel [booklet] for additional Precautionary Statements and First Aid

**Net Contents:** \_\_\_\_\_

**EPA Est. No.** \_\_\_\_\_

**Company Name and Address:**

PBI/Gordon Corporation

P.O. Box 860350

Shawnee, KS 66286



# **PRECAUTIONARY STATEMENTS**

## **Hazards to Humans and Domestic Animals**

**CAUTION:** Harmful if swallowed. Causes moderate eye irritation. Avoid contact with eyes or clothing. Wash thoroughly with soap and water after handling and before eating, drinking, chewing gum, using tobacco, or using the toilet. Remove and wash clothing before reuse. Wear long sleeved shirt, long pants, shoes and socks.

<b>First Aid</b>	
<b>If swallowed:</b>	<ul style="list-style-type: none"><li>• Call a poison control center or doctor immediately for treatment advice.</li><li>• Have person sip a glass of water if able to swallow.</li><li>• Do not induce vomiting unless told to by a poison control center or doctor.</li><li>• Do not give anything to an unconscious person.</li></ul>
<b>If in eyes:</b>	<ul style="list-style-type: none"><li>• Hold eye open and rinse slowly and gently with water for 15-20 minutes. Remove contact lenses, if present, after the first five minutes, then continue rinsing eye.</li><li>• Call a poison control center or doctor for treatment advice.</li></ul>
Have the product container or label with you when calling a poison control center or doctor or going for treatment. [You may also contact 1-877-800-5556 for emergency medical treatment advice.] [Medical Information Call 1-800-225-2883]	

## **Environmental Hazards**

This pesticide is toxic to fish and aquatic invertebrates. Drift and runoff may be hazardous to aquatic organisms in water adjacent to treated areas. To protect the environment, do not allow pesticide to enter or run off into storm drains, drainage ditches, gutters or surface waters. Applying this product in calm weather when rain is not predicted for the next 24 hours will help to ensure that wind or rain does not blow or wash pesticide off the treatment area.

This product has properties and characteristics associated with chemicals detected in groundwater. The use of this chemical in areas where soils are permeable, particularly where the water table is shallow, may result in groundwater contamination. Application around a cistern or well may result in contamination of drinking water or groundwater.

# **DIRECTIONS FOR USE**

It is a violation of Federal law to use this product in a manner inconsistent with its labeling.

## **Use Precautions and Restrictions:**

- Keep people and pets out of the area during application.
- Spray only the weed, not the entire lawn.
- This product is for spot treatment only.
- Do not apply this product in a way that will contact any person or pet, either directly or through drift.
- [Reentry Icon] Do not allow people or pets to enter the treated area until sprays have dried.
- Do not use this product for controlling weeds in vegetable gardens, flower beds or around shrubs or ornamental plants.
- Do not use on or around fruits, vegetables or flowers.
- Do not use this product on or near desirable plants, including within the dripline of roots of desirable trees and shrubs, as injury may result.
- Do not use clippings as mulch or compost.
- Do not apply as a fine mist because of potential injury to desirable plants.

**For Best Results**

- Apply when weeds are young and actively growing.
- Delay mowing 2 days before and until 2 days after the application of this product.
- If the lawn is dry, water 24 hours before using this product.
- Do not water lawn within 24 hours of treatment.
- Certain hard-to-kill weeds may need to be spot treated in 14 days.
- For new lawns, apply only when grass has reached a height of at least 2 inches.
- Bare spots may be seeded 4 weeks after application.
- Spray when air temperatures are cooler than 90°F.
- Avoid applications during the spring transition of the warm season grasses and during periods of extremely high temperatures.

**HOW IT WORKS / PRODUCT INFORMATION:**

EH-1449 Herbicide contains three proven weed killers that target lawn weeds and crabgrass. The herbicides enter the lawn weeds through their leaves and move inside the weeds, even down into the roots. And lawns listed on this label will not be harmed when used as directed.

**WHERE TO USE:**

EH-1449 Herbicide / Product Name is a ready-to-use [RTU] product intended for the treatment of individual weeds, patches of weeds or sparse weeds scattered throughout home lawns. EH-1449 Herbicide / Product Name can be applied to the following established turfgrass types:

Cool season turfgrass	Warm season turfgrass
Kentucky bluegrass Ryegrass, perennial and annual Tall fescue Fine fescues	Bermudagrass <sup>1</sup> , common and hybrid Zoysiagrass Buffalograss
<sup>1</sup> Application to bermudagrass may cause temporary yellowing or discoloration but full recovery can be expected. Do not apply to bermudagrass when daytime temperatures exceed 85° F.	

DO NOT apply EH-1449 Herbicide to the following:

Warm season turfgrass	Other areas
St. Augustinegrass, Bahia grass, Bentgrass Centipedegrass, Carpetgrass, Seashore paspalum	Lawns with desirable clovers or legumes, Dichondra, Ornamental plants (flowers, trees, groundcovers, landscape beds and shrubs), Turfgrass species that are not listed on this label, Gardens including vegetables, fruit trees, vines and berries.

**GRASS AND BROADLEAF WEEDS CONTROLLED [KILLS WEEDS INCLUDING:]**

[Some or all of the following weeds will appear on the product label]

GRASS WEEDS			
Crabgrass, large and smooth	Foxtail, green, yellow and giant	Kikuyugrass	Signalgrass, broadleaf

BROADLEAF WEEDS:			
A partial list is presented below:			
Annual yellow sweetclover Aster Austrian fieldcress Bedstraw Beggarticks Betony, Florida Bindweed, field Bird vetch	Cocklebur Common mullein Creeping Jenny (Creeping Charlie) Cudweed Curly dock Daisy, English Daisy fleabane	Narrowleaf plantain Narrowleaf vetch Nettle Orange hawkweed Oriental cocklebur Oxalis Parsley-piert Parsnip	Spiny cocklebur Spiny sowthistle Spotted catsear Spotted spurge Spurweed Stinging nettle Strawberry, India mock Tall nettle

**BROADLEAF WEEDS:**

A partial list is presented below:

Bitter wintercress	Daisy, oxeye	Pearlwort	Tall vervain
Bittercress, hairy	Dandelion	Pennycress	Tansy ragwort
Bitterweed	Dichondra	Pennywort	Tansy mustard
Black-eyed Susan	Dogbane	Peppergrass	Tanweed
Black medic	Dogfennel	Pepperweed	Thistle
Black mustard	Dollarweed	Pigweed	Trailing crownvetch
Blackseed plantain	False dandelion	Pineywoods bedstraw	Tumble mustard
Blessed thistle	Falseflax	Plains coreopsis	Tumble pigweed
Bloodflower milkweed	False sunflower	(tickseed)	Velvetleaf
Blue lettuce	Fiddleneck	Plantain	Venice mallow
Blue vervain	Florida pusley	Poison ivy	Virginia buttonweed
Bracted plantain	Frenchweed	Poison oak	Virginia creeper
Brassbuttons	Galinsoga	Pokeweed	Virginia pepperweed
Bristly oxtongue	Goathead	Poorjoe	Wavyleaf bullthistle
Broadleaf dock	Goldenrod	Prairie sunflower	Western clematis
Broadleaf plantain	Ground ivy	Prickly lettuce	Western salsify
Broomweed	Gumweed	Prickly sida	White mustard
Buckhorn	Hairy fleabane	Prostrate knotweed	Wild aster
Buckhorn plantain	Hawkweed	Prostrate pigweed	Wild buckwheat
Bulbous buttercup	Healall	Prostrate spurge	Wild carrot
Bull thistle	Heartleaf drymary	Prostrate vervain	Wild four-o'clock
Bullnettle	Heathaster	Puncturevine	Wild garlic
Burclover	Hedge bindweed	Purslane, common	Wild geranium
Burdock	Hedge mustard	Ragweed	Wild lettuce
Burning nettle	Hemp	Red sorrel	Wild marigold
Burweed	Henbit	Redroot pigweed	Wild mustard
Buttercup	Hoary cress	Redstem filaree	Wild onion
Buttonweed	Hoary plantain	Rough cinquefoil	Wild parsnip
Canada thistle	Hoary vervain	Rough fleabane	Wild radish
Carolina geranium	Horsenettle	Russian pigweed	Wild rape
Carpetweed	Jimsonweed	Russian thistle	Wild strawberry
Catchweed bedstraw	Knawel	Scarlet pimpernel	Wild sweet potato
Catnip	Knotweed	Scotch thistle	Wild vetch
Catsear	Kochia	Sheep sorrel	Wild violet
Chickweed, common	Lambsquarters	Shepherdspurse	Woodsorrel
Chickweed, mouseear	Lespedeza	Slender plantain	Woolly croton
Chicory	Mallow	Smallflower galinsoga	Woolly morningglory
Cinquefoil	Matchweed	Smooth dock	Woolly plantain
Clover, crimson	Mexicanweed	Smooth pigweed	Wormseed
Clover, hop	Milk vetch	Sorrel	Yarrow
Clover, red	Morningglory	Sowthistle	Yellow rocket
Clover, strawberry	Mouseear hawkweed	Spanishneedles	Yellowflower pepperweed
Clover, sweet	Mugwort	Speedwell	[and other broadleaf
Clover, white	Musk thistle	Spiny amaranth	weeds]
Cockle	Mustard		

**WHEN TO USE:**

Apply this product when weeds are small and actively growing in the spring or fall. Aim at center of weed and spray to lightly cover weed leaves.

**[Directions For Use Options Based On Applicator]****[Option 1: Conventional Trigger Small RTU]**

[Applicator (Device) (Applicator Name) Directions/Instructions]

**HOW TO USE:****Spray**

1. Turn sprayer nozzle to desired spray.
2. Squeeze trigger repeatedly to spray.

**Finish**

1. Turn sprayer nozzle to "OFF" [X]

AND/OR

**[Option 2: Conventional Trigger Large RTU]**

[Applicator (Device) (Applicator Name) Directions/Instructions]

**HOW TO USE:**

**Spray**

1. Remove sprayer from bottle by sliding [pulling] sprayer up.
2. Unwrap [uncoil] hose and insert [color] hose connector into [color] spout on [bottle] cap/knob/lid/opening **until it clicks.**
3. [Flip up [color] spout until fully upright] [Twist/turn spout/knob to "ON"] [Pull spout up].
4. Turn sprayer nozzle to desired spray [pattern].
5. Squeeze trigger repeatedly to spray.

**Finish**

1. Turn/twist sprayer nozzle to "OFF" [X].
2. [Push/turn/twist cap/knob/spout to "OFF" [X]/[Flip spout closed.]
3. **DO NOT DISCONNECT HOSE CONNECTOR FROM SPOUT/CAP/KNOB/OPENING.**
4. Place sprayer back into holster [holder].

[Note to reviewer: For Options 1 and 2, Conventional Trigger Small RTU and Conventional Trigger large RTU]

**STORAGE AND DISPOSAL**

**PESTICIDE STORAGE:** Keep from freezing. To be stored in original container and placed in areas inaccessible to children.

**PESTICIDE DISPOSAL AND CONTAINER HANDLING:** [Applicator Name] can be reused with [Product Name refill bottle/container]. Follow instructions in the Reuse Directions when reusing [applicator name]. Nonrefillable container. Do not reuse or refill this container. **If empty:** Place in trash or offer for recycling if available. **If partly filled:** Call your local solid waste agency for disposal instructions. Never place unused product down any indoor or outdoor drain.

AND/OR

**[Option 3 - Pull 'N Spray® II]**

[Applicator (Device) (Applicator Name) Directions/Instructions]

**HOW TO USE:**

**Spray**

1. Remove sprayer from holster [holder].
2. Unwrap [uncoil] hose and insert [color] hose connector into [color] spout on bottle cap/knob/lid/opening **until it clicks.**
3. [Flip up [color] spout until fully upright] [Twist/turn spout/knob to "ON"] [Pull spout up].
4. Turn sprayer nozzle to desired spray [pattern].
5. Point sprayer away from body. Slowly pull ring at bottom of sprayer until it stops, and hold for two [2] seconds to fill sprayer.

6. Press trigger to spray.

**Finish**

1. Turn/twist sprayer nozzle to "OFF" [X].
2. [Push/turn/twist cap/knob/spout to "OFF" [X]/ [flip spout closed.]
3. DO NOT DISCONNECT HOSE CONNECTOR FROM SPOUT/CAP/KNOB/OPENING.
4. Place sprayer back into holster [holder].

[Optional illustrations may be used in conjunction with the above steps]  
Pull N Spray Images:



[End Optional illustrations]

**Optional Refill/Reuse Directions**

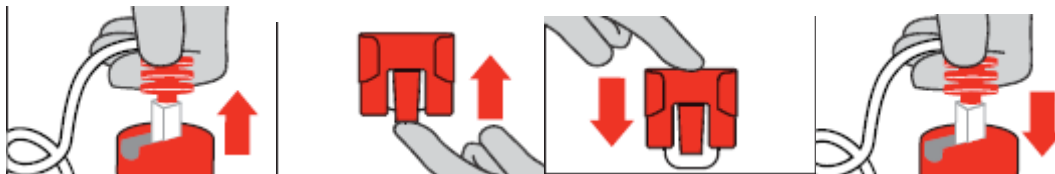
[The Pull 'N Spray II/Applicator Name [applicator/sprayer/wand] may be reused with the available EH-1449 Herbicide/Product Name refill bottle/container. Read and follow instructions in Reuse Directions to reuse the applicator.]

**Refill/Reuse Directions**

How to attach the [Pull 'N Spray II/Applicator Name] [applicator/sprayer/wand] to EH-1449 Herbicide /Product name [refill bottle]:

[Refill only with [Product Name] Herbicide Weed B Gon + Crabgrass Concentrate. Carefully measure and mix 6 fl oz [8 fl oz] in 1 gal/ 1.33 gal of water. Securely replace cap. Wipe container clean of any spilled product.]

[Optional illustrations may be used in conjunction with the above steps]  
Wand/Pull Spray Refill Images:



[End Optional illustrations]

[Note to Reviewer: Image of cap may vary, depending upon design.]

Removing [color] hose from original bottle/container:

	<p>[To remove the side holster [holder] from original bottle/container, pull [lift] the bottom tab underneath and slide the holster [holder] up.]</p>
--	---

	<p>[Attach the sprayer holster [holder] to EH-1449 Herbicide /Product Name] refill bottle/container by sliding the holster [holder] down onto the knob.]</p>
<p>Insert [color] hose connector into [color] spout on cap <u>until it clicks.</u></p>	

[Optional illustrations may be used in conjunction with the above steps]

[Note to reviewer: For Option 3 - Pull 'N Spray® II]

## STORAGE AND DISPOSAL

**PESTICIDE STORAGE:** Keep from freezing. To be stored in original container and placed in areas inaccessible to children.

**PESTICIDE DISPOSAL AND CONTAINER HANDLING:** [Applicator Name] can be reused with [Product Name refill bottle/container]. Follow instructions in the Reuse Directions when reusing [applicator name]. Nonrefillable container. Do not reuse or refill this container. **If empty:** Place in trash or offer for recycling if available. **If partly filled:** Call your local solid waste agency for disposal instructions. Never place unused product down any indoor or outdoor drain.

## [Option 4 – Battery Powered Wand/Comfort Wand]

[[Applicator Name] [Applicator/Wand] Directions]

### HOW TO USE:

#### Prep [Wand]

1. Remove sprayer [Applicator Name] from holster [holder].
2. [Remove [color] pull strip to activate batteries].
3. Unfold [Flip Open] [Applicator Name] [wand] until it clicks [locks] into position.

#### Connect

1. Unwrap [uncoil] hose and insert [color] hose connector into [color] spout/knob/opening/lid on [bottle] cap **until it clicks**.
2. [Flip up [color] spout/knob until fully upright.] [Twist/turn spout/knob to “ON”.] [Pull spout up].

#### Spray

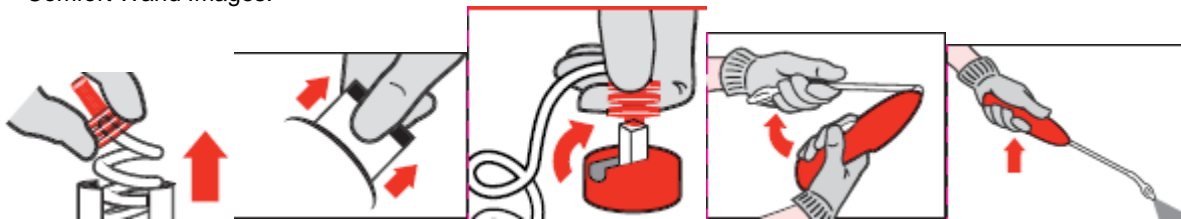
1. Turn sprayer nozzle to desired spray [pattern].
2. [Slide [color] switch on trigger to “Unlock” [illustration]].
3. Press trigger to spray.

#### Finish

1. Turn [sprayer] nozzle to “OFF” [X].
2. [Slide [color] switch on trigger to “Lock” [illustration]].
3. [Push/turn/twist cap/knob/spout to “OFF” [X]/ [Flip spout closed].
4. Fold [Applicator Name] wand closed and place sprayer back in holster [holder].

[Optional illustrations may be used in conjunction with the above steps]

Comfort Wand Images:



[End Optional illustrations]

**Important Use Information:** Do not submerge in water. When storing sprayer for long periods, remove batteries.

[To replace batteries: See marked diagram inside battery compartment.]

### Optional Refill/Reuse Directions

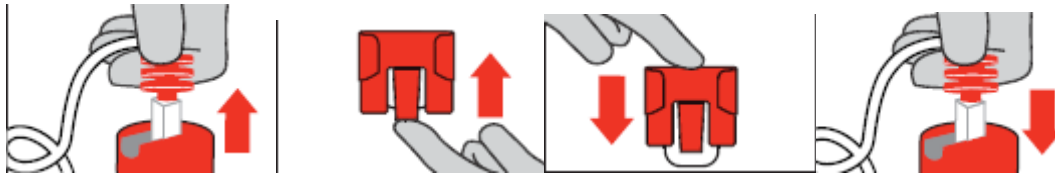


[The Comfort Wand/Applicator Name [applicator/sprayer/wand] may be reused with EH-1449 Herbicide/Product Name refill bottle/container. Read and follow instructions in Reuse Directions to reuse the applicator.]

**Refill/Reuse Directions**

How to attach the [Comfort Wand/Applicator Name] [applicator/sprayer/wand] to EH-1449 Herbicide/Product Name [refill bottle]:

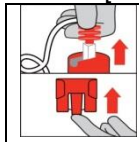
[Refill only with [EH-1437 Herbicide (EPA Reg. No. 2217-896)]. Carefully measure and mix 6 fl oz [8 fl oz] in 1 gal/ 1.33 gal of water. Securely replace cap. Wipe container clean of any spilled product.]  
 [Optional illustrations may be used in conjunction with the above steps]  
 Wand/Pull Spray Refill Images:



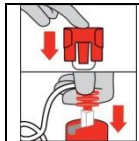
[End Optional illustrations]

[Note to Reviewer: Image of cap may vary, depending upon design.]

Remove [color] hose connector from original bottle/container:



[To remove the side holster [holder] from original bottle/container, pull [lift] the bottom tab underneath and slide the holster [holder] up.]



[Attach the sprayer holster [holder] to EH-1449 Herbicide /Product Name] refill bottle/container by sliding the holster [holder] down onto the knob.]

Insert [color] hose connector into [color] spout on cap until it clicks.

[Optional illustrations may be used in conjunction with the above steps]

[Note to reviewer: For Option 4 – Battery Powered Wand/Comfort Wand]]

**STORAGE AND DISPOSAL**

**PESTICIDE STORAGE:** Keep from freezing. To be stored in original container and placed in areas inaccessible to children.

**PESTICIDE DISPOSAL AND CONTAINER HANDLING:** [Applicator Name] can be reused with [Product Name refill bottle/container]. Follow instructions in Reuse Directions when reusing [applicator name]. Nonrefillable container. Do not reuse or refill this container. **If empty:** Place in trash or offer for recycling if available. **If partly filled:** Call your local solid waste agency for disposal instructions. Never place unused product down any indoor or outdoor drain.

<b>USE TIPS:</b>		
<b>When to Apply:</b>	<b>For established lawns</b>  <b>For newly seeded areas</b>  <b>For newly sodded, sprigged, or plugged areas</b>	Apply when daytime temperatures are below 90°F.  Apply this product to newly seeded grasses when well-established (approximately 6 weeks after seedling emergence) or after the third mowing.  Apply this product 3 to 4 weeks after the sodding, sprigging, or plugging operations.
<b>Seeding:</b>		The treated area can be seeded at 4 weeks after the application of this product.
<b>Irrigation:</b>	<b>Non-stressed turfgrass</b>  <b>Stress from high temperatures, drought, insects or diseases.</b>	Adequate soil moisture and favorable growing conditions enhance the performance of this product.  Avoid applications of this product when turfgrasses are under stress since injury may result. If dry conditions exist, schedule irrigations (watering) before and after the application. For best results, delay the irrigation until approximately 24 hours after application of this product.
<b>Mowing:</b>		Delay mowing 2 days before and until 2 days after the application of this product.  Do not use clippings from the treated areas as mulch or compost around flowers, ornamentals, trees, or in vegetable gardens.
<b>Nontarget plants:</b>		Do not apply this product to food crops (gardens, fruits and vegetables), forage crops, or ornamental plants including flowers, trees, shrubs, hedges, woody ornamentals, groundcovers established in landscape plantings and other nontarget plants.  Do not spray exposed roots of ornamentals and trees.

## **LIMITED WARRANTY AND DISCLAIMER**

FOR USE ONLY AS DIRECTED. THE MANUFACTURER NEITHER MAKES NOR INTENDS ANY EXPRESS OR IMPLIED WARRANTIES, INCLUDING ANY WARRANTY OF MERCHANTABILITY OR FITNESS FOR A PARTICULAR PURPOSE, WHICH ARE HEREBY EXPRESSLY DISCLAIMED. TO THE EXTENT CONSISTENT WITH APPLICABLE LAW, IN NO CASE SHALL THE MANUFACTURER BE LIABLE FOR INCIDENTAL, CONSEQUENTIAL, OR SPECIAL DAMAGES RESULTING FROM THE USE OR HANDLING OF THIS PRODUCT. If these terms are not acceptable, return this product unopened immediately to the point of purchase, and the purchase price will be refunded in full. The terms of this Limited Warranty and Disclaimer cannot be varied by any written or verbal statements or agreements at the point of sale or elsewhere.

## **APPENDIX**

[Note to Reviewer: These statements were not deleted, just relocated to the front panel.]

### **1. Statements which may appear on different label components depending on packaging configuration.**

- See next panel for additional Precautionary Statements and First Aid
- Net Contents: \_\_\_\_\_
- EPA Est. No. \_\_\_\_\_

**2. Advertising claims that may be presented on container labeling, advertisements, brochures, and other marketing/sales promotional materials:**

**Efficacy Claims**

- [Also] Kills [Dandelion], [Crabgrass], and [Clover], Plus [XXX] Other [Listed] Weeds [As Listed]
- Controls dandelions, crabgrass and other listed hard to kill grassy or broadleaf weeds
- Kills crabgrass and over XXX listed weeds in country and suburban lawns\* \*See inside booklet for a complete list of weeds controlled
- Kills [controls] [Crabgrass,] [Dandelion,] [Clover,] and other common [lawn weeds] [weeds found in your lawn]
- Kills [controls] XX types of weeds [- broadleaf or grass weeds]
- Kill over [up to] XXX [lawn] weeds
- Kills [controls] [over] [XXX+] [types of] weeds
- Controls over 200 Broadleaf Weeds
- Kills 200+ Weeds
- Kills over 200 Weeds [Plus Crabgrass in One Easy Step]
- [Even] kills [controls] poison ivy and poison oak
- Kills [controls] [Hard-to-Control] [Tough] Weeds
- Kills Even Tough Weeds – roots & all
- Tough weed killer
- Kill [control] the most common weeds in your lawn [grass]
- Kills [controls] all types of [lawn] weeds [in your grass]
- Kills [controls] both broadleaf and grass weeds [in lawns]
- Kills [controls] Listed Weeds
- Effective [Broadleaf] Weed Protection
- Effectively Protects Lawns from Broadleaf Weeds
- Weed Kill System
- Kills All Major Broadleaf Weeds
- **Post-emergent: kills existing [listed] weeds**
- Kills [Lawn] Weeds plus [including Crabgrass] in One [Easy] Step
- Kills [Both] Broadleaf and [AND] Grassy Weeds [in One [Easy] Step]
- Kills [Control] lawn weeds *plus* crabgrass [in your lawn with ease!]
- One [1] [easy] solution for crabgrass, dandelions and clover
- **One [1] [easy] solution for [your] total weed control needs**
- Simple [and easy] steps to a weed free [lawn] [yard]
- Kills Crabgrass [plus] [over XX] Broadleaf Weeds
- Kills both Crabgrass & Broadleaf weeds
- Kills Crabgrass & Other Weeds in Your Lawn
- Kills Both Broadleaf and Crabgrass Weeds
- Controls crabgrass and broadleaf weeds in lawns
- When You Are Going to Kill Weeds, Why Not Get Them All [Broadleaf & Grass]
- [Only] targets the weeds, leaving your lawn [grass] unharmed
- Targets weeds invading your lawn [grass]
- Targets Weeds
- Gets to the root [of your weed problem]
- Kills [lawn] weeds [down] [to the roots]
- Kills to the Root [so weeds won't come back]
- Gets the Root
- Kills the Weed, Kills the Root
- Kills Weeds not Lawns™
- Kills the Weeds, Not the Lawn
- Won't Harm Lawns\* \*When used as directed
- Won't harm grass [when used as directed]

- Kills Weeds – Won't Harm Lawns
- Will not Harm [Your] Lawn[s]
- Gentle on lawns [grass], tough on weeds!
- Kills by contact
- Starts working on contact
- Say goodbye to weeds
- Get ready to say "peace out" to weeds.

- **Broadleaf Weeds:** *(a partial list is presented below)*

Annual Yellow Sweetclover, Aster, Austrian Fieldcress, Barnyardgrass, Bedstraw, Beggarticks, Florida Betony, Field Bindweed, Bird Vetch, Bitter Wintercress, Hairy Bittercress, Bitterweed, Black-eyed Susan, Black Medic, Black Mustard, Blackseed Plantain, Blessed Thistle, Bloodflower Milkweed, Blue Lettuce, Blue Vervain, Bracted Plantain, Brassbuttons, Bristly Oxtongue, Broadleaf Dock, Broadleaf Plantain, Broadleaf Signalgrass, Broomweed, Buckhorn Plantain, Bulbous Buttercup, Bull Thistle, Bullnettle, Burclover, Burdock, Burning Nettle, Burweed, Buttercup, Buttonweed, Canada Thistle, Carolina Geranium, Carpetweed, Catchweed Bedstraw, Catnip, Catsear, Common Chickweed, Mouseear Chickweed, Chicory, Cinquefoil, Crimson Clover, Hop Clover, Red Clover, Strawberry Clover, Sweet Clover, White Clover, Cockle, Cocklebur, Common Mullein, Creeping Charlie, Creeping Jenny, Cudweed, Curly Dock, English Daisy, Fleabane Daisy, Oxeye Daisy, Dandelion, Dichondra, Dogbane, Dogfennel, Dollarweed, False Dandelion, False Flax, False Sunflower, Fiddleneck, Florida Pusley, Frenchweed, Galinsoga, Giant Foxtail, Goathead, Goldenrod, Green Foxtail, Ground Ivy, Gumweed, Hairy Fleabane, Hawkweed, Healall, Drymary Heartleaf, Heath Aster, Hedge Bindweed, Hedge Mustard, Hemp, Henbit, Hoary Cress, Hoary Plantain, Hoary Vervain, Horsenettle, Jimsonweed, Knawel, Knotweed, Kochia, Lambsquarters, Large Crabgrass, Lespedeza, Mallow, Matchweed, Mexicanweed, Milk Vetch, Morningglory, Mouseear Hawkweed, Mugwort, Musk Thistle, Mustard, Narrowleaf Plantain, Narrowleaf Vetch, Nettle, Orange Hawkweed, Oriental Cocklebur, Oxalis, Parsley-piert, Parsnip, Pearlwort, Pennycress, Pennywort, Peppergrass, Pepperweed, Pigweed, Pineywoods Bedstraw, Plains Coreopsis (Tickseed), Plantain, Poison Ivy, Poison Oak, Pokeweed, Poorjoe, Prairie Sunflower, Prickly Lettuce, Prickly Sida, Prostrate Knotweed, Prostrate Pigweed, Prostrate Spurge, Prostrate Vervain, Puncturevine, Common Purslane, Ragweed, Red Sorrel, Redroot Pigweed, Redstem Filaree, Rough Cinquefoil, Rough Fleabane, Russian Pigweed, Russian Thistle, Scarlet Pimpernel, Scotch Thistle, Sheep Sorrel, Shepherdspurge, Slender Plantain, Smallflower Galinsoga, Smooth Crabgrass, Smooth Dock, Smooth Pigweed, Sorrel, Sowthistle, Spanishneedles, Speedwell, Spiny Amaranth, Spiny Cocklebur, Spiny Sowthistle, Spotted Catsear, Spotted Spurge, Spurweed, Stinging Nettle, India Mock Strawberry, Tall Nettle, Tall Vervain, Tansy Mustard, Tansy Ragwort, Tanweed, Thistle, Trailing Crownvetch, Tumble Mustard, Tumble Pigweed, Velvetleaf, Venice Mallow, Virginia Buttonweed, Virginia Creeper, Virginia Pepperweed, Wavyleaf Bullthistle, Western Clematis, Western Salsify, White Mustard, Wild Aster, Wild Buckwheat, Wild Carrot, Wild Four-o'clock, Wild Garlic, Wild Geranium, Wild Lettuce, Wild Marigold, Wild Mustard, Wild Onion, Wild Parsnip, Wild Radish, Wild Rape, Wild Strawberry, Wild Sweet Potato, Wild Vetch, Wild Violet, Woodsorrel, Woolly Croton, Woolly Morningglory, Woolly Plantain, Wormseed, Yarrow, Yellow Foxtail, Yellowflower Pepperweed, Yellow Rocket, and other broadleaf weeds

#### **Efficacy Claims [Supplemental Distributor A]**

- Season long [weed] control\* [\*as listed/ for dandelion and/& clover]
- [Up to] 3 month [weed] control\* [\*as listed/ dandelion and clover]
- Kills/clears out/takes out/stops/controls/eliminates weeds/Dandelion(s) [and/& Clover(s)] [for up to [3 months/ a season/12 weeks/90 days], [guaranteed [\*]]
- Clear[s] out weeds\* [for up to [3 months/ a season/12 weeks/90days], [guaranteed[\*]] (\*dandelion and clover)]
- Control[s] weeds\* [for up to [3 months/ a season/ all season long/12 weeks/90 days], [guaranteed[\*]] (\* dandelion and clover)]
- Stop[s] weeds\* [for up to [3 months/ a season/ all season long/12 weeks/90 days], [guaranteed[\*]] (\* dandelion and clover)]

- Kill weeds\* [for up to [3 months /a season/ all season long/12 weeks/90 days], [guaranteed[\*]] (\*dandelion and clover)]
- Take[s] out weeds\* [for up to [3 months/ all season long/ a season/12 weeks/90 days], [guaranteed[\*]] (\*dandelion and clover)]
- Eliminate(s) weeds\* [for up to [3 months /a season/ all season long/12 weeks/90 days], [guaranteed[\*]] (\*dandelion and clover)]
- Apply once and you are/you're done [with dandelions and clover][for up to][3 months/ a season/ all season long/12 weeks/90 days], [guaranteed[\*]]
- One step weed control [for dandelion and clover] [for up to] [3 months/12 weeks/90 days]
- Use it now and you won't see weeds\* [for up to] [3 months/ all season long/12 weeks/90 days], [guaranteed[\*]] (\*dandelion and clover)
- Live dandelion-free [for up to] [3 months/ all season long/12 weeks/90 days], [guaranteed[\*]] (\*dandelion and clover)
- Stops dandelions [for up to] [3 months/ all season long/12 weeks/90 days], [guaranteed[\*]] (\*dandelion and clover)
- Stops clover [for up to] [3 months/ all season long/12 weeks/90 days], [guaranteed[\*]] (\*dandelion and clover)

#### Formula Claims:

- 2-in-1
- Two Products in One!
- Two-in-One Product that Kills Crabgrass & Broadleaf Weeds
- Double [Dual] [Two-Way] Action – Kills Broadleaf and Crabgrass Weeds
- Two Types of Weeds; One Solution
- Dual Action Weed Control – Kills the Plant and the Root
- All-In-One Weed Killer
- All-in-One Weed Solution
- All-in-One Lawn Weed Killer
- All-in-One Weed Killer for Lawns
- All-in-One [complete] [total] [2-in-1] weed control [for lawns]
- How it works: The [insert brand name] formula kills BOTH broadleaf weeds and Crabgrass in one easy step [without harming your lawn - guaranteed].
- [With] Lawn Guard™ [Lawn Protect™]
- Colorless formula
- Fast-acting [formula]
- For use on [many Northern & Southern] grasses [lawns] including XXX
- Treats many Northern & Southern grass types
- Lawn Friendly
- Non-staining
- Stain-free [formula]
- Systemic [herbicide] Activity
- Unique Formula

#### Characteristics

- A simple and effective way to kill breakthrough and pop up weeds in your yard/lawn/grass
- Easily [quickly] spot treat weeds
- [Great] [Ideal] for spot treatment[s]
- [Great] For spot treating [treatment]
- Spot weed control for Southern lawns
- Targets weeds
- makes more than XX gallons
- Covers [treats up to] XXXX square feet
- Designed for use on Southern lawns [warm season grasses/list approved grass types here]

- Water based

### **Weather & Speed**

- [See] results in hours
- Overnight results
- Rainproof [rainfast] in [1] [X] hour[s]
- Starts working immediately
- Fast Results
- Visible Results
- Kills Weeds Fast
- Rainproof in [1] hour[s]
- [Visible] [See] results in X hours
- Starts Working on Contact
- Results [works] with 1 [one] application

### **Applicator Claims**

- Hands stay dry
- No messy clean-up
- One-handed operation [use] [spraying]
- [Requires] no measuring, [no mixing]
- [The] Easy way to spray
- [Applicator name]
- [Applicator name] refill
- [One touch] [continuous spray] [Comfort] Wand
- 4 AA [brand name] batteries included
- Adjustable [spray] nozzle [for maximum control]
- Adjustable [spray] nozzle [for your custom needs]
- Battery powered [sprayer]
- Easy Action pump spray
- Extended Reach [illustration]
- Extended Wand [for hard-to-reach areas]
- No assembly required
- No [more] hand fatigue [tired hands]
- No more [bending] [kneeling] [or straining]
- Precise control [target] [- spray only what you want]
- Quick Pump [Pump N Go II] [Applicator]
- Ready-to-Use
- Refill
- Refill [bottle] for [Applicator name]
- Targets weeds in tight [hard to spray] spaces
- XX minutes of continuous spray
- Convenient [simple] design
- Easy [and simple] to use
- Quick & Easy [to use]
- Save[s] time [and energy]
- Easy to Use Power Sprayer
- Easy to Use
- No Pumping
- Battery Powered Sprayer
- Just Point & Shoot
- Always Ready-To-Spray
- No More Squeeze, Squeeze, Squeeze
- The Easiest Way to Spray

- No Pulling – Just Point & Shoot
- Revolutionary [Applicator] [Sprayer]
- Ideal for small areas.
- No messy cleanup.
- [Easy &] Fast Coverage
- Faster [Coverage]Than Pull & Spray

#### Other

- \* when used as directed
- Be in control of weeds in your yard
- Before [illustration]/After [illustration]
- DO NOT use on St. Augustine grass, including Floratam variety
- For a beautiful [weed-free] lawn
- [For] [Get] a weed free lawn
- For Home Lawn Care
- For Home Use [Only]
- From the lawn care experts at [company or brand]
- From the pest experts at [company or brand]
- Guaranteed [results]\*
- Guaranteed not to harm the lawn
- **NOTICE:** To the extent consistent with applicable law, the buyer assumes all risks of use, storage or handling of this product not in accordance with label directions.
- **The [company or brand] Guarantee**
- If for any reason you, the consumer, are not satisfied with this product, mail us your original proof of purchase to obtain a full refund of your purchase price.
- **[company or brand] and Your Environment** – Your yard is a place for family and pets to enjoy. That's why [company or brand]'s products are designed with care to provide effective solutions to weed problems. Please follow instructions for appropriate usage, storage and disposal.
- Help[s] [keep[s]] the lawn look[ing] beautiful
- Helps keep lawns weed free
- Keep from freezing
- Lawn friendly weed control
- Local solutions for local problems
- New/Now
- [company or brand] guarantee
- [company or brand]'s #1 Weed Killer for Lawns
- [company or brand]'s [Our] most powerful weed killer for lawns
- [company or brand]'s simple weed killer
- Proven Performance
- Read Entire label before use
- Recyclable bottle
- [Recycle symbol]
- Safe for lawns [guaranteed\*]
- Takes the guesswork out of weed control [in the lawn]
- Weed control for your lawn
- Weed control made easy
- Weed free [worry free]
- Won't harm [the] lawn, guaranteed\*
- XX% more than X gallon size
- XX% less plastic
- Systemic [Herbicide] [Activity]
- Ideal for Spot Treatment

- Save Time & Energy
- SmartTrack™ Marker Shows Treated Weeds
- Contains SmartTrack™, a Non Staining Marker [that Indicates Where You've Sprayed]
- Guaranteed\* Not to Harm [Your] Lawn[s]
- Guaranteed\* Results
- Kills Weeds the First Time, Every Time, Guaranteed\*
- 100% Satisfaction Guaranteed\* (or your money back)
- **Optional Instructions for Side Clip Tape**  
 PULL / PEEL HERE [TO REMOVE TAPE]  
 Open Resealable Label For Directions and/ Precautions  
 Press to Reseal
- **Questions & Comments:** [icon phone] [icon computer]
- Call 1-800-xxx-xxxx or Visit our Website at www.companyname.com
- [Superscript is first letter of lot number]
- Value [pack/size/buy]
- Bonus [value/size/offer/package/pack/buy]
- **2 Bottles & 1 Comfort Wand**
- Exclusive item [size]
- Special [buy/offer/size/item]
- Limited time offer
- X% more than X size
- Save [money]
- [Easy] refill [system]
- Free sample
- X% more [free]
- Combo pack
- 1 [1.33 gallon/gal refill size]
- Great value
- Bottle in [a] box
- Easy to use [mix] [refill]
- Premeasured [refill] [bottle]
- Use with/in [product name] 1.33 gal [1 gal] trigger/wand/pull 'n spray

The following Product Facts format is optional and the information may appear inside or outside of a box.

**PRODUCT FACTS:**

**[What It Does:]** Kills major broadleaf and troublesome grass kills weeds including dandelion, chickweed, clover as well as crabgrass and foxtail. (See inside for complete list)

**[Where to Use:]** Lawns: Kills the weeds not the lawn when used as directed. (icon weeds)

**[When to Use:]** Apply when daytime temperatures are between 45° and 90°F, (do not apply above 85°F for bermudagrass).

**Questions & Comments:** (icon phone) (icon computer)  
 Call 1-800-xxx-xxxx or visit our website at www.companyname.com

## **DOCUMENT CONTROL INFORMATION**

1. **Unique Label Identifier:** 002217-00991.20211213.notif-proposed-highlighted.doc

2. **Reason for Issue:** Ad Claims