



UNITED STATES ENVIRONMENTAL PROTECTION AGENCY
WASHINGTON, DC 20460

OFFICE OF CHEMICAL SAFETY
AND POLLUTION PREVENTION

July 10, 2017

Eric D. Smith
Federal Registration Manager
PBI/Gordon Corporation
P.O. Box 014090
Kansas City, MO 64101

Subject: Label Amendment – Add Sublabel 2 with additional sprayer types, S&D, claims
Product Name: EH-1497 Herbicide
EPA Registration Number: 2217-953
Application Date: March 10, 2017
Decision Number: 528136

Dear Mr. Smith:

The amended label referred to above, submitted in connection with registration under the Federal Insecticide, Fungicide, and Rodenticide Act (FIFRA), as amended, is acceptable. This approval does not affect any conditions that were previously imposed on this registration. You continue to be subject to existing conditions on your registration and any deadlines connected with them.

A stamped copy of your labeling is enclosed for your records. This labeling supersedes all previously accepted labeling. You must submit one copy of the final printed labeling before you release the product for shipment with the new labeling. In accordance with 40 CFR 152.130(c), you may distribute or sell this product under the previously approved labeling for 18 months from the date of this letter. After 18 months, you may only distribute or sell this product if it bears this new revised labeling or subsequently approved labeling. "To distribute or sell" is defined under FIFRA section 2(gg) and its implementing regulation at 40 CFR 152.3.

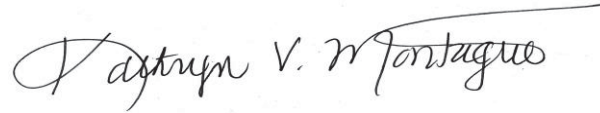
Should you wish to add/retain a reference to the company's website on your label, then please be aware that the website becomes labeling under FIFRA and is subject to review by the Agency. If the website is false or misleading, the product would be misbranded and unlawful to sell or distribute under FIFRA section 12(a)(1)(E). 40 CFR 156.10(a)(5) list examples of statements EPA may consider false or misleading. In addition, regardless of whether a website is referenced on your product's label, claims made on the website may not substantially differ from those claims approved through the registration process. Therefore, should the Agency find or if it is brought to our attention that a website contains false or misleading statements or claims substantially differing from the EPA approved registration, the website will be referred to the EPA's Office of Enforcement and Compliance.

Continued on page 2

Page 2 of 2
EPA Reg. No. 2217-953
Decision No. 528136

Your release for shipment of the product constitutes acceptance of these conditions. If these conditions are not complied with, the registration will be subject to cancellation in accordance with FIFRA section 6. If you have any questions, please contact Mindy Ondish by phone at 703-605-0723, or via email at ondish.mindy@epa.gov.

Sincerely,

A handwritten signature in black ink that reads "Kathryn V. Montague". The signature is written in a cursive style with a long horizontal flourish extending to the right.

Kathryn Montague, Product Manager 23
Herbicide Branch
Registration Division (7505P)
Office of Pesticide Programs

Enclosure

EH-1497 HERBICIDE

EPA Reg. No. 2217-953



ACTIVE INGREDIENTS:

MCPA, dimethylamine salt.....	0.318%
Quinclorac.....	0.104%
Dicamba, dimethylamine salt.....	0.029%
OTHER INGREDIENTS:	99.549%
TOTAL	100.000%

THIS PRODUCT CONTAINS:

- 0.338 lb MCPA acid equivalent per gallon or 0.260%
- 0.135 lb 3,7-dichloro-8-quinolinecarboxylic acid per gallon or 0.104%
- 0.031 lb 3,6-dichloro-o-anisic acid equivalent per gallon or 0.024%

Note: If the design, format, or small size of the container labels makes it impractical to present the entire ingredient statement on the front panel, then add a referral statement and present this substatement on the back panel: **“See back panel for substatement of ingredient statement”**.

KEEP OUT OF REACH OF CHILDREN

CAUTION

STOP! READ THE ENTIRE LABEL FIRST. OBSERVE ALL PRECAUTIONS AND FOLLOW DIRECTIONS CAREFULLY.

See attached booklet for complete [Precautionary Statements and] Directions for Use, including Storage and Disposal, and back panel for [complete Precautionary Statements, including] First Aid.

Net Contents: ____
EPA Est. No. ____

Company Name and Address:
PBI/Gordon Corporation
1217 West 12th Street
Kansas City, Missouri 64101



PRECAUTIONARY STATEMENTS

Hazards to Humans and Domestic Animals

CAUTION: Causes moderate eye irritation. Avoid contact with eyes, skin or clothing. Wash thoroughly with soap and water after handling and before eating, drinking, chewing gum, using tobacco or using the toilet.

First Aid	
If in eyes:	<ul style="list-style-type: none">• Hold eye open and rinse slowly and gently with water for 15-20 minutes.• Remove contact lenses, if present, after the first minutes, then continue rinsing eye.• Call a poison control center or doctor for treatment advice.
If on skin or clothing:	<ul style="list-style-type: none">• Take off contaminated clothing.• Rinse skin immediately with plenty of water for 15-20 minutes.• Call a poison control center or doctor for treatment advice.
If swallowed:	<ul style="list-style-type: none">• Call a poison control center or doctor immediately for treatment advice.• Have person sip a glass of water if able to swallow.• Do not induce vomiting unless told to by a poison control center or doctor.• Do not give anything to an unconscious person.
Have the product container or label with you when calling a poison control center or doctor or going for treatment. You may also contact 1-877-800-5556 for emergency medical treatment advice.	

Environmental Hazards

This pesticide is toxic to fish, aquatic invertebrates, and aquatic plants. Do not apply directly to water. Drift and runoff may be hazardous to aquatic organisms in water adjacent to treated areas. Runoff of this product will be reduced by avoiding applications when rainfall is forecasted to occur within 48 hours. Do not contaminate water when disposing of equipment wash waters or rinsate.

This chemical has properties and characteristics associated with chemicals detected in groundwater. The use of this chemical in areas where soils are permeable, particularly where the water table is shallow, may result in groundwater contamination. Application around a cistern or well may result in contamination of drinking water or groundwater.

Sublabel 1 Trigger Sprayer

DIRECTIONS FOR USE

It is a violation of Federal law to use this product in a manner inconsistent with its labeling.

USE RESTRICTIONS:

- Do not apply this product in a way that will contact any person or pet, either directly or through drift. Keep people and pets out of the area during application. Do not allow people or pets to enter the treated area until sprays have dried.
- Apply when daytime temperatures are between 50° and 90°F (do not apply above 85°F for bermudagrass). Do not treat when air temperatures exceed 90°F as damage to turfgrass may occur.
- Do not apply this product to food crops (gardens, fruits and vegetables), forage crops, or ornamental plants including flowers, trees, shrubs, hedges, woody ornamentals, groundcovers established in landscape plantings and other nontarget plants.
- Do not spray exposed roots of ornamentals and trees.
- This product is for spot treatment only.

PRODUCT FACTS:

What It Does: Kills major broadleaf and troublesome grass weeds including dandelion, chickweed, clover as well as crabgrass and foxtail. (See inside for complete list)

Where to Use: Lawns: Kills the weeds not the lawn when used as directed. [icon weeds]

When to Use: Apply when daytime temperatures are between 50° and 90°F, (do not apply above 85°F for bermudagrass).

Questions & Comments: [icon phone] [icon computer]

Call 1-800-xxx-xxxx or visit our website at www.companyname.com

SHAKE WELL BEFORE USING.

HOW IT WORKS:

EH-1497 Herbicide contains three proven weed killers that target lawn weeds and crabgrass. The herbicides enter the lawn weeds through their leaves and move inside the weeds, even down into the roots. And lawns listed on this label will not be harmed when used as directed.

WHERE TO USE:

EH-1497 Herbicide is a ready-to-use (RTU) product intended for the spot treatment of individual weeds, patches of weeds or sparse weeds scattered throughout home lawns. EH-1497 Herbicide can be applied to the following established turfgrass species:

Cool season turfgrass	Warm season turfgrass
Kentucky bluegrass, Ryegrass, perennial and annual, Tall fescue, Mixtures of cool season grasses containing fine fescues (red, hard and chewing) and bentgrass	Bermudagrass, common and hybrid, Zoysiagrass, Buffalograss

DO NOT apply EH-1497 Herbicide to the following:

Warm season turfgrass	Other areas
St. Augustinegrass, Bahigrass, Centipedegrass, Carpetgrass, Seashore paspalum	Lawns with desirable clovers or legumes, Dichondra, Ornamental plants (flowers, trees, groundcovers, landscape beds and shrubs), Turfgrass species that are not listed on this label, Gardens including vegetables, fruit trees, vines and berries.

WEEDS CONTROLLED

GRASS WEEDS:

crabgrass (large and smooth), foxtail (green, yellow and giant), kikuyugrass, and broadleaf signalgrass

BROADLEAF WEEDS:			
A list is presented below:			
Annual yellow sweetclover	Cockle	Musk thistle	Spiny cocklebur
Aster	Cocklebur	Mustard	Spiny sowthistle
Austrian fieldcress	Common mullein	Narrowleaf plantain	Spotted catsear
Bedstraw	Creeping Jenny (Creeping Charlie)	Narrowleaf vetch	Spotted spurge
Beggarticks	Cudweed	Nettle	Spurweed
Betony, Florida	Curly dock	Orange hawkweed	Stinging nettle
Bindweed, field	Daisy, English	Oriental cocklebur	Strawberry, India mock
Bird vetch	Daisy, fleabane	Oxalis	Tall nettle
Bitter wintercress	Daisy, oxeye	Parsley-piert	Tall vervain
Bittercress, hairy	Dandelion	Parsnip	Tansy ragwort
Bitterweed	Dichondra	Pearlwort	Tansy mustard
Black-eyed Susan	Dogbane	Pennycress	Tanweed
Black medic	Dogfennel	Pennywort	Thistle
Black mustard	Dollarweed	Peppergrass	Trailing crownvetch
Blackseed plantain	Elderberry	Pepperweed	Tumble mustard
Blessed thistle	False dandelion	Pigweed	Tumble pigweed
Bloodflower milkweed	Falseflax	Pineywoods bedstraw	Velvetleaf
Blue lettuce	False sunflower	Plains coreopsis (tickseed)	Venice mallow
Blue vervain	Fiddleneck	Plantain	Virginia buttonweed
Bracted plantain	Florida pusley	Poison ivy	Virginia creeper
Brassbuttons	Frenchweed	Poison oak	Virginia pepperweed
Bristly oxtongue	Galinsoga	Pokeweed	Wavyleaf bullthistle
Broadleaf dock	Goldenrod	Poorjoe	Western clematis
Broadleaf plantain	Ground ivy	Prairie sunflower	Western salsify
Broomweed	Gumweed	Prickly lettuce	White mustard
Buckhorn	Hairy fleabane	Prickly sida	Wild aster
Buckhorn plantain	Hawkweed	Prostrate knotweed	Wild buckwheat
Bulbous buttercup	Healall	Prostrate pigweed	Wild carrot
Bull thistle	Heartleaf drymary	Prostrate spurge	Wild four-o'clock
Bullnettle	Heathaster	Prostrate vervain	Wild garlic
Burclover	Hedge bindweed	Puncturevine	Wild geranium
Burdock	Hedge mustard	Purslane, common	Wild lettuce
Burning nettle	Hemp	Ragweed	Wild marigold
Burweed	Henbit	Red sorrel	Wild mustard
Buttercup	Hoary cress	Redroot pigweed	Wild onion
Buttonweed	Hoary plantain	Redstem filaree	Wild parsnip
Canada thistle	Hoary vervain	Rough cinquefoil	Wild radish
Carolina geranium	Horsenettle	Rough fleabane	Wild rape
Carpetweed	Jimsonweed	Russian pigweed	Wild strawberry
Catchweed bedstraw	Knawel	Scarlet pimpernel	Wild sweet potato
Catnip	Knotweed	Sheep sorrel	Wild vetch
Catsear	Kochia	Shepherdspurse	Wild violet
Chickweed, common	Lambsquarters	Slender plantain	Woodsorrel
Chickweed, mouseear	Lespedeza	Smallflower galinsoga	Woolly croton
Chicory	Mallow	Smooth dock	Woolly morningglory
Cinquefoil	Matchweed	Smooth pigweed	Woolly plantain
Clover, crimson			Wormseed

BROADLEAF WEEDS: A list is presented below:			
Clover, hop	Mexicanweed	Sorrel	Yarrow
Clover, red	Milk vetch	Sowthistle	Yellow rocket
Clover, strawberry	Morningglory	Spanishneedles	Yellowflower pepperweed
Clover, sweet	Mouseear hawkweed	Speedwell	
Clover, white	Mugwort	Spiny amaranth	

WHEN TO USE:

Apply this product when weeds are small and actively growing.

CRABGRASS (large and smooth):

- **Spring:** Apply this product from crabgrass emergence until the crabgrass is 3 to 4 inches in height. This period begins the first time that you can see crabgrass in your lawn. Re-treat at 21 days later for dense populations.

FOXTAIL (GREEN, GIANT AND YELLOW):

- **Spring and early summer:** Apply this product to foxtail during the early growth stages or when foxtail is 1 to 4 inches in height. Re-treat at 21 days later for dense populations.

BROADLEAF WEEDS:

- **Spring:** Apply when **dandelion, plantain, buttercup, speedwell, knotweed** and other broadleaf weeds are young and actively growing with adequate soil moisture for best results.
- **Fall:** Apply when **henbit, chickweed, white clover, ground ivy, lawn burweed** and other broadleaf weeds are young and actively growing with adequate soil moisture for best results.

[HOW TO USE]

TRIGGER SPRAYERS:

1. Shake well.
 - 1a. Connect trigger sprayer. Unscrew and discard the white cap on the bottle. Insert the hose into the bottle and tighten the cap securely.
 - 1b. Prime Sprayer: Turn the sprayer nozzle one-half turn counter-clockwise. Hold the sprayer lower than the bottle and squeeze the trigger several times until it sprays.
2. [Adjust the nozzle to coarse spray pattern to minimize wind drift. (graphic)]. Spray the weeds only. Spray [Apply] to lightly cover broadleaf and grass weeds. Excessive spraying can injure some lawns. Do not apply when daytime temperatures are above 90°F as lawn injury can occur (do not apply above 85°F for bermudagrass).

CULTURAL TIPS:

For newly seeded areas:

- Do not apply within 4 weeks after seedling emergence of Kentucky bluegrass, fine fescue mixtures and perennial ryegrass. Apply this product to newly seeded grasses when well-established (approximately 6 weeks after seedling emergence) or after the third mowing.

For newly sodded, sprigged, or plugged areas:

- The application of this product to newly sodded, sprigged, or plugged grasses should be delayed until 3 to 4 weeks after the sodding, sprigging, or plugging operations.

Seeding:

- Turf species listed on this label can be seeded into the treated areas at four (4) weeks after the application of this product.

Irrigation:

- Do not apply this product immediately before rainfall or irrigation. For best results, do not irrigate or water the turfgrass within 24 hours after application.
- Avoid applications of this product when turfgrasses are under stress since injury may result.

Mowing:

- Delay mowing 2 days before and until 2 days after the application of this product.

STORAGE AND DISPOSAL

Do not contaminate water, food, or feed by storage and disposal.

PESTICIDE STORAGE: Keep from freezing. Store in original container in a locked storage area inaccessible to children and pets.

PESTICIDE DISPOSAL AND CONTAINER HANDLING: Nonrefillable container. Do not reuse or refill this container. **If empty:** Place in trash or offer for recycling if available. **If partly filled:** Call your local solid waste agency for disposal instructions. Never place unused product down any indoor or outdoor drain.

LIMITED WARRANTY AND DISCLAIMER

FOR USE ONLY AS DIRECTED. THE MANUFACTURER NEITHER MAKES NOR INTENDS ANY EXPRESS OR IMPLIED WARRANTIES, INCLUDING ANY WARRANTY OF MERCHANTABILITY OR FITNESS FOR A PARTICULAR PURPOSE, WHICH ARE HEREBY EXPRESSLY DISCLAIMED. TO THE EXTENT CONSISTENT WITH APPLICABLE LAW, IN NO CASE SHALL THE MANUFACTURER BE LIABLE FOR INCIDENTAL, CONSEQUENTIAL, OR SPECIAL DAMAGES RESULTING FROM THE USE OR HANDLING OF THIS PRODUCT. If these terms are not acceptable, return this product unopened immediately to the point of purchase, and the purchase price will be refunded in full. The terms of this Limited Warranty and Disclaimer cannot be varied by any written or verbal statements or agreements at the point of sale or elsewhere.

Sublabel 2

With Expanded Sprayer Options

DIRECTIONS FOR USE

It is a violation of Federal law to use this product in a manner inconsistent with its labeling.

USE RESTRICTIONS:

- Do not apply this product in a way that will contact any person or pet, either directly or through drift. Keep people and pets out of the area during application. Do not allow people or pets to enter the treated area until sprays have dried.
- Apply when daytime temperatures are between 50° and 90°F (do not apply above 85°F for bermudagrass). Do not treat when air temperatures exceed 90°F as damage to turfgrass may occur.
- Do not apply this product to food crops (gardens, fruits and vegetables), forage crops, or ornamental plants including flowers, trees, shrubs, hedges, woody ornamentals, groundcovers established in landscape plantings and other nontarget plants.
- Do not spray exposed roots of ornamentals and trees.
- This product is for spot treatment only.

SHAKE WELL BEFORE USING.

PRODUCT DESCRIPTION:

EH-1497 Herbicide contains three proven weed killers that target lawn weeds and crabgrass. The herbicides enter the lawn weeds through their leaves and move inside the weeds, even down into the roots. And lawns listed on this label will not be harmed when used as directed.

WHERE TO USE:

EH-1497 Herbicide is a ready-to-use (RTU) product intended for the spot treatment of individual weeds, patches of weeds or sparse weeds scattered throughout home lawns. EH-1497 Herbicide can be applied to the following established turfgrass species:

Cool season turfgrass	Warm season turfgrass
Kentucky bluegrass, Ryegrass, perennial and annual, Tall fescue, Mixtures of cool season grasses containing fine fescues (red, hard and chewings) and bentgrass	Bermudagrass, common and hybrid, Zoysiagrass, Buffalograss

DO NOT apply EH-1497 Herbicide to the following:

Warm season turfgrass	Other areas
St. Augustinegrass, Bahia grass, Centipedegrass, Carpetgrass, Seashore paspalum	Lawns with desirable clovers or legumes, Dichondra, Ornamental plants (flowers, trees, groundcovers, landscape beds and shrubs), Turfgrass species that are not listed on this label, Gardens including vegetables, fruit trees, vines and berries.

WHEN TO USE:

Apply this product when weeds are small and actively growing.

Crabgrass (large and smooth):

- **Spring:** Apply this product from crabgrass emergence until the crabgrass is 3 to 4 inches in height. This period begins the first time that you can see crabgrass in your lawn. Re-treat at 21 days later for dense populations.

Foxtail (green, giant and yellow):

- **Spring and early summer:** Apply this product to foxtail during the early growth stages or when foxtail is 1 to 4 inches in height. Re-treat at 21 days later for dense populations.

Broadleaf Weeds:

- **Spring:** Apply when **dandelion, plantain, buttercup, speedwell, knotweed** and other broadleaf weeds are young and actively growing with adequate soil moisture for best results.
- **Fall:** Apply when **henbit, chickweed, white clover, ground ivy, lawn burweed** and other broadleaf weeds are young and actively growing with adequate soil moisture for best results.

SPRAYER [& REFILL] INSTRUCTIONS

[Optional Sprayer Directions]

[Applicator Option 1]

Prepare [insert sprayer name] Comfort Grip Battery Powered Sprayer.

1. Remove Sprayer from Holster and remove battery tab.
2. Remove [insert color] plug and pull cord out all the way.
3. Open cap.
4. Insert [insert color] plug into the cap opening until fully snapped in place ensuring the finger tab is in between the "Open: and "Closed" position.
5. Rotate the finger tab of the plug to the "Open" position.
6. Turn sprayer nozzle to "on" [desired spray pattern] and follow directions for use [below].

Prepare [insert sprayer name] Comfort Grip Battery Powered Sprayer.

1. Remove Sprayer from Holster and remove battery tab.
2. Remove [insert color] plug and pull cord out all the way.
3. Remove tab from flip top of cap.
4. Open and insert [insert color] plug into spout [cap opening].
5. Turn sprayer nozzle to "on" [desired spray pattern] and follow directions for use [below].

[Applicator Option 2]

[(PNS [II]/Pull 'N Sprayer [II]/SprayMaster)]

[[Applicator Name] [Applicator/Sprayer] Directions]

[Illustration #1: graphic representation of sprayer instructions for proper sprayer & hose assembly]

- Remove sprayer from side carrier and unwrap hose completely.
- Insert (color of plug) plug at end of hose into (color of spout) spout on cap [until it clicks].
- Flip up spout

[Illustration #2: graphic representation of directional spray application]

- Point sprayer away from body.
- Grasp sprayer by the handle.
- Slowly pull ring at bottom of sprayer handle until it stops to ready the sprayer.

[Illustration #3: graphic representation of nozzle adjustment]

- Twist nozzle at end of sprayer to adjust spray pattern.

[Illustration #4: graphic representation of proper sprayer use & instructions below]

- For initial use prime the sprayer by depressing the trigger for several seconds until product begins to flow.

- Pull ring at sprayer bottom again as needed to continue spraying.

HOW TO USE:

Follow illustrations and instructions above. Twist nozzle at end of sprayer to adjust spray pattern. Point sprayer away from body and press sprayer [button or trigger] to begin spraying. Pull ring at sprayer bottom again as needed to continue spraying. Aim at center of weed and spray to lightly cover.

[HOW TO APPLY:]

- Twist nozzle at end of sprayer to open [wide spray, medium spray, or stream].
- Point sprayer away from body and press spray [button or trigger] to begin spraying.
- Pull ring at sprayer bottom again as needed to continue spraying.
- Aim at center of weed and spray to lightly cover.]

**[Applicator Option 3]
[(QCS) and Trigger Sprayer]**

[[Applicator Name] [Applicator/Sprayer] Directions]

Quick Connect Sprayer Package Design Directions:

NOW with Quick Connect Sprayer. 1. Pull sprayer from bottle. 2. Pull [color] hose connector and coil from sprayer handle. 3. Insert hose connector into [color] sprout on cap until it clicks into place. 4. Flip up spout. Turn sprayer nozzle to open, and spray.

- For initial use prime the sprayer by depressing the trigger repeatedly until product begins to flow.

Quick Connect Sprayer. 1. Remove sprayer. Pull cord ALL THE WAY OUT. 2. Insert red plug into spout (on cap) [until it clicks]. 3. Flip up spout. Open nozzle at end of sprayer.

Trigger Sprayer Directions:

HOW TO USE:

Turn sprayer nozzle to open. Adjust spray nozzle to give a coarse spray. Aim at center of weed and spray to lightly cover. Spray any time weeds are actively growing.

[HOW TO APPLY: [icon: graphic representation of nozzle adjustment & spray pattern]

- Turn sprayer nozzle to open.
- Adjust sprayer nozzle as desired.
- Aim at center of weed and spray to lightly cover.]

**[Applicator Option 4]
[Battery Powered Wand]**

1. Remove



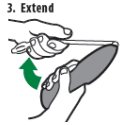
- Remove [wand/insert applicator name] [from] [side/carrier/holder/clip/bottle].
- [Pull connector by slightly twisting from [side/carrier/holder/clip/bottle] and unwrap hose completely.]
- Remove protective strip from battery compartment to activate batteries.

2. Connect



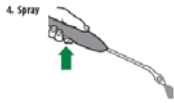
- Insert [insert color] plug at end of hose into [insert color] [spout/knob/opening] on cap until it clicks. Flip up spout. Alternative Text: [Flip up [insert color] spout until fully upright]. Twist [spout/knob] to ON.] [Pull spout up.] [Spout must remain up while spraying.]
- Remove [protective] [cone/dome/guard/shield] [from side slip/from bottle] and attach over nozzle [for targeted application].

3. Extend



- Flip open [wand/insert applicator name] until it clicks and locks into position.
- [Expend [wand/fully]].

4. Spray



- Slide trigger lock on [wand/insert applicator name] handle to the unlocked position.
- Twist nozzle to desired spray pattern.
- For initial use prime the sprayer by depressing the trigger for several seconds until product begins to flow.
- Point [insert applicator name] nozzle away from body and hold [insert color] trigger for continuous spray.

HOW TO APPLY/USE:

Follow illustrations and instructions above. Twist nozzle at end of [applicator name] wand to desired spray pattern. Point [applicator name] wand away from body and hold (color of trigger) trigger for continuous spray. Release trigger to stop spray. Aim at center of weed and spray to lightly cover.

[OPTIONAL HOW TO APPLY/USE WHEN USING MARKER]

[Follow illustrations and instructions above. Turn sprayer nozzle to desired position – FOAM or STREAM. FOAM marks treated weeds allowing you to easily see where you've sprayed. STREAM provides a coarse spray that does not foam. [Both settings provide the same weed control results.] Point [applicator name] wand away from body and hold (color of trigger) trigger for continuous spray. Release trigger to stop spray. Aim at center of weed and spray to lightly cover.]

[After Use: twist nozzle to OFF position. [Engage trigger lock.] Flip the [applicator name] wand closed and store on the side [carrier], [holder], [clip].]

Important Use Information: Do not submerge in water. When storing sprayer for long periods, remove batteries.

To replace batteries: Open battery compartment at bottom of [applicator name] wand [with a small screwdriver]. Remove used batteries and replace four/[insert number] new AA batteries in correct position as marked per diagram inside battery compartment. Securely close battery compartment door [and screw closed firmly]. Always use a complete set of the same type when replacing batteries. [Best performance is achieved with alkaline batteries.] Never mix alkaline, carbon-zinc or rechargeable batteries.

[Optional Trouble shooting Section for Battery Powered Wand]

[Troubleshooting Tips:

Problem: Sprayer does not spray (function).

Possible Cause: Batteries not installed properly.

Solution: See instructions for correct battery placement.

Problem: Sprayer makes a straining noise (Sprayer runs but nothing (no product) comes out).

Possible Cause: Nozzle is turned Off.

Solution: Turn nozzle to (desired) spray setting (position).

Possible Cause: Red (color) plug at end of hose is not flipped up.

Solution: Insert (color of plug) plug at end of hose into (color of spout) spout on cap until it clicks and flip up spout.

Possible Cause: Sprayer is not primed.

Solution: Press and hold button on sprayer for about X (10, 15, 20, 30) seconds to prime the sprayer.

Problem: Spray pattern is weak (or uneven) (product flow is uneven or dribbles out of nozzle).

Possible Cause: Weak batteries.

Solution: Install a fresh set of batteries.

Possible Cause: Red (color of plug) plug at end of hose is not flipped up.

Solution: Insert (color of plug) plug at end of hose into (color of spout) spout on cap **V** until it clicks. (Attach coupler to the cap) and flip up spout. Possible Cause: Nozzle not fully open.

Solution: Turn nozzle to (desired) spray setting (position).]

[Applicator Option 5]

[Easy-Shot System]

[[Applicator Name] [Applicator] Directions]

[Insert:] Attach refill bottle by removing cap and twisting into [applicator name]. Do not over-tighten.

[Illustration #1: graphic representation of sprayer instructions for inserting refill receptacle]

[Spray:] Twist nozzle at end of wand to desired spray pattern.

- For initial use prime the sprayer by depressing the trigger for several seconds until product begins to flow.

Hold [color of trigger] trigger for continuous spray. [Illustration #2: graphic representation of proper sprayer use & instructions]

For hard to reach areas

[Extend:] Extend wand by sliding wand forward until it locks into place.

[Remove:] Remove wand and aim at target while holding the [applicator name] facing toward the ground.

[OPTIONAL DIRECTIONS]:

[[Clean:] Remove cartridge and clean applicator after each use. [Always clean applicator before switching from one product to another.] See [applicator name] applicator for cleaning directions.

- Remove refill cartridge from [applicator name]
- Remove cap from cleaning cartridge and fill with tap water
- Replace cap and insert cleaning cartridge by twisting into [applicator name]
- Spray in an area that is designated by this product label until cleaning cartridge is empty.]

HOW TO APPLY/USE: [icon]

Follow illustrations and instructions above. Twist nozzle at end of sprayer to desired spray pattern. Point sprayer away from body and hold [color of trigger] trigger for continuous spray. Aim at center of weed and spray to lightly cover.

[[After Use:] Twist nozzle to CLOSED position.]

Important Use Information: Do not submerge in water. When storing sprayer for long periods, remove batteries.

To replace batteries: Open battery compartment on side of [applicator name]. Remove used batteries and replace with four/[insert number] new AA batteries in correct position as marked per diagram inside battery compartment. Securely close battery compartment door. Always use a complete set of the same type when replacing batteries. Never mix alkaline, carbon-zinc or rechargeable batteries.

[Applicator Option 6]

[Optional [Reuse And] Refill Directions]

Refill only with EH-1457 Herbicide [this product].

How to attach [Applicator Name] [applicator] to [Product name] [Refill Bottle]:

Removing [Applicator Name] [applicator] from original bottle:

- Remove the [applicator name] [applicator] by pulling the [color of plug] plug from the [color of spout] spout on cap. [Illustration: graphic representation of sprayer instructions for this step]
- At the bottom of the side [clip] [carrier] [holder] press the middle tab up and slide the [clip] [carrier] [holder] upwards to remove it from the bottle. [Illustration: graphic representation of sprayer instructions for this step]

Adding [Applicator name] [applicator] to [Product Name]:

- Slide the side [clip] [carrier] [holder] downward on the knob located [at right-hand] [on the] side of the refill container. [Illustration: graphic representation of sprayer instructions for this step]
- Insert [color of plug] plug at end of hose into [color of spout] spout on cap [until it clicks]. [Illustration: graphic representation of sprayer instructions for this step]

How to refill [Product Name] with [Quick Pump] [Applicator Name] [applicator]:

- Remove the pump handle on the Quick Pump/Applicator Name by twisting it counterclockwise. [Illustration: graphic representation of sprayer instructions for this step]
- Remove the cap from the [Product Name] bottle/container. [Illustration: graphic representation of sprayer instructions for this step]
- Pour the product carefully and directly into the [Quick Pump/Applicator Name] container. Do Not fill above [2"/3"/4"] from the top of the container. DO NOT add water. [Illustration: graphic representation of refilling RTU container]
- Secure the pump handle back on the container by twisting it clockwise until tight. [Illustration: graphic representation of proper re-installation of sprayer to container]

[Applicator Option 7]

PUMP 'N Go [2]

Instructions for Printing on the Wand and Handle:

Wand: STORAGE POSITION Push button and pull nozzle end. Extend to spray position. [insert arrow graphic] SPRAY POSITION

Handle: [insert arrow graphic] RELEASE PRESSURE AFTER USE Push handle to cap & turn. RETIGHTEN.

1. **CUT [insert graphics]** Carefully cut the [insert number/two] [insert color/white] zip ties securing the hose and pump handle with scissors. Use caution not to cut the [insert color/ white] hose.
2. **CONNECT [insert graphics]** Unwind hose. Firmly push the connector at the end of the hose onto the spout on the pump, until it locks into place.
3. **EXTEND WAND** Lift sprayer wand off bottle. Push [insert color/yellow] button while pulling out on the wand nozzle tip. Fully extend wand until [insert color/yellow] button snaps into SPRAY POSITION. NOTE: [insert color/white] trigger will not function until wand is fully extended and [insert color/yellow] button is visible in the SPRAY POSITION.
4. **PUMP** Make sure handle is screwed on tightly or the bottle will not pressurize. Pump container [insert number of pumps to prime/X to Y] times to pressurize bottle. A full bottle requires fewer pumps than an empty bottle. Pumping to the higher range will provide longer spray duration. After pumping, push pump down and turn handle clockwise to lock into carrying position. NOTE: This bottle is designed to expand under pressure and cannot be over-pressurized.
5. **SPRAY** Aim wand. Spray by pushing down [insert color/white] trigger with thumb. Adjust spray pattern by rotating [insert color/white] nozzle tip up to one-half rotation. Spray weeds until thoroughly wet.

6.STORE When finished spraying, push the [insert color/yellow] button and [retract/push] the wand until the [insert color/yellow] button snaps back into the original storage position. Place wand back onto [the top of] the bottle [in the integrated holster] with nozzle [facing down/tip extended through the eyelet opening].

7.DEPRESSURIZE Push pump handle all the way down and turn pump handle and cap counter-clockwise to relieve pressure, then retighten to store.

[Applicator Option 8]

BATTERY OPERATED SPRAYER with Wand

Wand Safety Sticker or Printed on the Handle: Always lock after use. **Alternative Text:** [Always lock sprayer when opening and closing]

1. Remove

- Remove [wand/insert applicator name] [from] [side/carrier/holder/clip/bottle].
- Pull connector by slightly twisting from [side/carrier/holder/clip/bottle] and unwrap hose completely.
- Remove protective strip from battery compartment to activate batteries.

2. Connect

- Insert [insert color] plug at end of hose into [insert color] [spout/knob/opening] on cap until it clicks. Flip up spout. **Alternative Text:** [Flip up [insert color] spout until fully upright] [Twist [spout/knob] to ON.] [Pull spout up.] [Spout must remain up while spraying.]

3. Extend

- Flip open [wand/insert applicator name] until it clicks and locks into position.

4. Spray

- Slide trigger lock on [wand/insert applicator name] handle to the unlocked position.
- Twist nozzle to desired spray pattern.
- For initial use prime the sprayer by depressing the trigger for several seconds until product begins to flow.
- Point [insert applicator name] nozzle away from body and hold [insert color] trigger for continuous spray.

Important Use Information: Do not submerge in water. When storing sprayer for long periods, remove batteries.

To Replace Batteries: Open battery compartment at bottom of [wand/insert applicator name] with a small screwdriver

Remove used batteries and replace with [insert number/four] new [AA/ alkaline] batteries [in correct position as marked inside battery compartment]

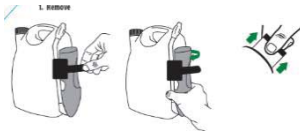
Securely close battery compartment door and screw closed firmly. Always use a complete set of the same type when replacing batteries. Best performance is achieved with alkaline batteries. Never mix alkaline, carbon-zinc or rechargeable batteries. Dispose of used batteries according to manufacturer's instructions or in household trash.

[Applicator Option 9]

BATTERY OPERATED SPRAYER with Extendable Wand

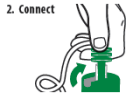
Wand Safety Sticker or Printed on the Handle: Always lock after use. **Alternative Text:** [Always lock sprayer when opening and closing]

1. Remove



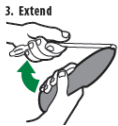
- Remove [wand/insert applicator name] [from] [side/carrier/holder/clip/bottle].
- [Pull connector by slightly twisting from [side/carrier/holder/clip/bottle] and unwrap hose completely.]
- Remove protective strip from battery compartment to activate batteries.

2. Connect



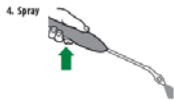
- Insert [insert color] plug at end of hose into [insert color] [spout/knob/opening] on cap until it clicks. Flip up spout. **Alternative Text:** [Flip up [insert color] spout until fully upright.] [Twist [spout/knob] to ON.] [Pull spout up.] [Spout must remain up while spraying.]
- [Remove [protective] [cone/dome/guard/shield] [from side clip/from bottle] and attach over nozzle [for targeted application].]

3. Extend



- Flip open [wand/insert applicator name] until it clicks and locks into position.
- [Extend [wand/fully]].

4. Spray



- Slide trigger lock on [wand/insert applicator name] handle to the unlocked position.
- Twist nozzle to desired spray pattern.
- For initial use prime the sprayer by depressing the trigger for several seconds until product begins to flow.
- Point [insert applicator name] nozzle away from body and hold [insert color] trigger for continuous spray.

Important Use Information: Do not submerge in water. When storing sprayer for long periods, remove batteries.

To Replace Batteries: Open battery compartment at bottom of [wand/insert applicator name] with a small screwdriver.

Remove used batteries and replace with [insert number/four] new [AA/alkaline] batteries [in correct position as marked inside battery compartment]

Securely close battery compartment door and screw closed firmly. Always use a complete set of the same type when replacing batteries. Best performance is achieved with alkaline batteries. Never mix alkaline, carbon-zinc or rechargeable batteries. Dispose of used batteries according to manufacturer's instructions or in household trash.

[Optional Sections for Refill and Refillable Containers Only]

[Refill Container]

Use this product to refill the empty [insert brand name for 2217-953] container by carefully pouring the entire content of the 1.25 gal refill bottle [container] directly into the ready-to-use container equipped with spray applicator. DO NOT add water.]

[HOW TO REFILL

For Ready-To-Use Containers with Applicators Intended to be Reused/Refilled

To refill this product, use the [insert brand name for 2217-953] refill, and carefully pour the entire content of the 1.25 gal [XXX fl.oz./XXX gal] refill bottle [container] directly into this empty ready-to-use container equipped with spray applicator. DO NOT add water.]

[Optional Sections for Battery Operated Sprayers Only]

IMPORTANT SPRAYER INFORMATION

- Read and follow all directions before use.
- [insert applicator name] is to be used only with EH-1457 Herbicide [insert Alternate Brand Name] products with a quick-connect cap. [insert applicator name] may not be compatible with other products.
- Do not drop or throw sprayer.
- Do not [submerge/immerse] sprayer in water. Never place sprayer in dishwasher.
- Do not use soap or other cleaning agents to clean sprayer. If necessary, clean outer sprayer surface only with damp towel.
- Insert batteries in their correct (+/-) position. Remove batteries for winter storage or when storing product for long periods of time.
- Always use a complete set of new alkaline batteries. Never mix alkaline, carbon-zinc, or rechargeable batteries.
- Always follow the manufacturer's instructions for battery disposal and use.
- Purge [insert applicator name] of liquid for winter storage or place [wand/insert applicator name] in a heated storage area.

TROUBLESHOOTING SECTION FOR BATTERY OPERATED SPRAYERS

[Troubleshooting Section for [Battery Powered/Comfort Wand/One-Touch Wand/Extendable Wand/Sure Shot Wand/insert applicator name] Directions]

Troubleshooting Tips:

Problem: Sprayer does not [spray/function].

Possible Cause: Batteries not installed properly.

Solution: See instructions for correct battery placement.

Problem: Sprayer makes a straining noise. [Sprayer runs but no product comes out].

Possible Cause: Nozzle is turned Off.

Solution: Twist nozzle to desired spray pattern.

Possible Cause: [insert color] plug at end of hose is not [flipped up/open].

Solution: Insert [insert color] plug at end of hose into [insert color] [spout/knob/opening] on cap until it clicks and [flip up spout/flip up [insert color] spout until fully upright.] [twist [spout/knob] to ON.] [pull spout up.]

Possible Cause: Sprayer is not primed.

Solution: Press and hold button on sprayer for about [10/15/20/30] seconds to prime the sprayer.

Problem: Spray pattern is weak [or uneven]. [Product flow is uneven or dribbles out of nozzle.]

Possible Cause: Weak batteries.

Solution: Install a fresh set of alkaline batteries.

Possible Cause: [insert color] plug at end of hose is not in the fully upright position.
 Solution: Insert [insert color] plug at end of hose into [insert color] [spout/knob/opening] on cap until it clicks. [Attach coupler to the cap] and [flip up spout/flip up [insert color] spout until fully upright] [twist [spout/knob] to ON.] [pull spout up.]

Possible Cause: Nozzle not fully open.
 Solution: Twist nozzle to desired spray pattern.

CULTURAL TIPS:

For newly seeded areas:

- Do not apply within 4 weeks after seedling emergence of Kentucky bluegrass, fine fescue mixtures and perennial ryegrass. Apply this product to newly seeded grasses when well-established (approximately 6 weeks after seedling emergence) or after the third mowing.

For newly sodded, sprigged, or plugged areas:

- The application of this product to newly sodded, sprigged, or plugged grasses should be delayed until 3 to 4 weeks after the sodding, sprigging, or plugging operations.

Seeding:

- Turf species listed on this label can be seeded into the treated areas at four (4) weeks after the application of this product.

Irrigation:

- Do not apply this product immediately before rainfall or irrigation. For best results, do not irrigate or water the turfgrass within 24 hours after application.
- Avoid applications of this product when turfgrasses are under stress since injury may result.

Mowing:

- Delay mowing 2 days before and until 2 days after the application of this product.

WEEDS CONTROLLED			
GRASS WEEDS:			
Crabgrass, large & smooth	Foxtail, green, yellow & giant	Kikugrass	Signalgrass, broadleaf
BROADLEAF WEEDS:			
Annual yellow sweetclover	Cockle	Musk thistle	Spiny cocklebur
Aster	Cocklebur	Mustard	Spiny sowthistle
Austrian fieldcress	Common mullein	Narrowleaf plantain	Spotted catsear
Bedstraw	Creeping Jenny (Creeping Charlie)	Narrowleaf vetch	Spotted spurge
Beggarticks	Cudweed	Nettle	Spurweed
Betony, Florida	Curly dock	Orange hawkweed	Stinging nettle
Bindweed, field	Daisy, English	Oriental cocklebur	Strawberry, India mock
Bird vetch	Daisy, fleabane	Oxalis	Tall nettle
Bitter wintercress	Daisy, oxeye	Parsley-piert	Tall vervain
Bittercress, hairy	Dandelion	Parsnip	Tansy ragwort
Bitterweed	Dichondra	Pearlwort	Tansy mustard
Black-eyed Susan	Dogbane	Pennycress	Tanweed
Black medic	Dogfennel	Pennywort	Thistle
Black mustard	Dollarweed	Peppergrass	Trailing crownvetch
Blackseed plantain	Elderberry	Pepperweed	Tumble mustard
Blessed thistle	False dandelion	Pigweed	Tumble pigweed
Bloodflower milkweed	Falseflax	Pineywoods bedstraw	Velvetleaf
Blue lettuce	False sunflower	Plains coreopsis (tickseed)	Venice mallow
Blue vervain	Fiddleneck	Plantain	Virginia buttonweed
Bracted plantain			Virginia creeper

BROADLEAF WEEDS:			
Brassbuttons	Florida pusley	Poison ivy	Virginia pepperweed
Bristly oxtongue	Frenchweed	Poison oak	Wavyleaf bullthistle
Broadleaf dock	Galinsoga	Pokeweed	Western clematis
Broadleaf plantain	Goldenrod	Poorjoe	Western salsify
Broomweed	Ground ivy	Prairie sunflower	White mustard
Buckhorn	Gumweed	Prickly lettuce	Wild aster
Buckhorn plantain	Hairy fleabane	Prickly sida	Wild buckwheat
Bulbous buttercup	Hawkweed	Prostrate knotweed	Wild carrot
Bull thistle	Healall	Prostrate pigweed	Wild four-o'clock
Bullnettle	Heartleaf drymary	Prostrate spurge	Wild garlic
Burclover	Heathaster	Prostrate vervain	Wild geranium
Burdock	Hedge bindweed	Puncturevine	Wild lettuce
Burning nettle	Hedge mustard	Purslane, common	Wild marigold
Burweed	Hemp	Ragweed	Wild mustard
Buttercup	Henbit	Red sorrel	Wild onion
Buttonweed	Hoary cress	Redroot pigweed	Wild parsnip
Canada thistle	Hoary plantain	Redstem filaree	Wild radish
Carolina geranium	Hoary vervain	Rough cinquefoil	Wild rape
Carpetweed	Horsenettle	Rough fleabane	Wild strawberry
Catchweed bedstraw	Jimsonweed	Russian pigweed	Wild sweet potato
Catnip	Knawel	Scarlet pimpernel	Wild vetch
Catsear	Knotweed	Sheep sorrel	Wild violet
Chickweed, common	Kochia	Shepherdspurse	Woodsorrel
Chickweed, mouseear	Lambsquarters	Slender plantain	Woolly croton
Chicory	Lespedeza	Smallflower galinsoga	Woolly morningglory
Cinquefoil	Mallow	Smooth dock	Woolly plantain
Clover, crimson	Matchweed	Smooth pigweed	Wormseed
Clover, hop	Mexicanweed	Sorrel	Yarrow
Clover, red	Milk vetch	Sowthistle	Yellow rocket
Clover, strawberry	Morningglory	Spanishneedles	Yellowflower pepperweed
Clover, sweet	Mouseear hawkweed	Speedwell	
Clover, white	Mugwort	Spiny amaranth	

STORAGE AND DISPOSAL

Do not contaminate water, food, or feed by storage and disposal. Keep from freezing. Keep pesticide in original container. Do not put into food or drink containers. Avoid contamination of feed and foodstuffs. Store in a cool, dry place, preferably in a locked storage area.

PESTICIDE STORAGE:

[Only for PNS [II], Pull 'N Spray [II], SprayMaster (nonrefillable container):] Completely discharge/dispense product in sprayer prior to storage. Twist sprayer nozzle to the OFF position. Flip down [color of spout] spout on cap. NO NEED TO DISCONNECT SPRAYER HOSE FROM CAP. Place sprayer back inside carrier on bottle with the nozzle facing down.

[Only for Quick Connect Sprayer and bottle (nonrefillable container):] Flip down spout to close. No need to disconnect trigger sprayer. Close nozzle on trigger sprayer. Snap sprayer back in place.

[Only for conventional trigger sprayers larger than 24 fl.oz. (nonrefillable container):] Place trigger sprayer under handle on container to keep sprayer above the level of contents.

[Only for conventional trigger sprayers (nonrefillable container):] Rotate nozzle to closed position. **OR** Turn sprayer nozzle to "OFF".

[Only for Wand Applicator (nonrefillable container):] Flip down (color of spout) spout on cap. NO NEED TO DISCONNECT SPRAYER HOSE FROM CAP. Completely discharge/dispense product in sprayer prior to storage. Twist sprayer nozzle to the OFF position. [Engage trigger lock.] Flip the [applicator name] wand closed and place [sprayer] back in side carrier [clip] [holder].

[Only for Easy Shot System (nonrefillable container):] Replace cap.

[Only for battery operated sprayer containers]: Flip spout down. **Alternative Text:** [Close [insert color] spout on cap.] [Twist [spout/knob] to OFF.] [Push spout down]. **NO NEED TO DISCONNECT SPRAYER HOSE FROM CAP.** Twist sprayer nozzle to the OFF position. [Engage trigger lock.] [Retract and] Flip the [wand/insert applicator name] closed and place in side [carrier/clip/holder]. Store product in original container in a safe place away from direct sunlight. Keep from freezing. If frozen, allow to thaw and shake well before using.

[Only for non-sprayer (refill) containers:] Store product in original container in a safe place away from direct sunlight. Keep from freezing. If frozen, allow to thaw and shake well before using.

[Only for Pump 'N Go [2] Containers:] Push the [insert color/yellow] button and retract the wand until the [insert color/yellow] button snaps back into the original STORAGE POSITION. Place wand back onto [the top of] the bottle [in the integrated holster] with nozzle [facing down/tip extended through the eyelet opening]. Push pump handle all the way down and turn pump handle and cap counter-clockwise to relieve pressure, then retighten to store. Store product in original container in a safe place away from direct sunlight. Keep from freezing. If frozen, allow to thaw and shake well before using.

[Non-refillable containers] **PESTICIDE DISPOSAL AND CONTAINER HANDLING:**
Nonrefillable container. Do not reuse or refill this container. If empty: Place in trash or offer for recycling if available. If partly filled: Call your local solid waste agency for disposal instruction. Never place unused product down any indoor or outdoor drain.

[Refillable containers] **PESTICIDE DISPOSAL AND CONTAINER HANDLING:**
Refillable container. Follow instructions in the REFILL section when using [applicator name]. Do not reuse or refill this container unless the directions for use allow refill according to the directions contained on the REFILL section. If empty: Place in trash or offer for recycling if available. If partly filled: Call your local solid waste agency for disposal instruction. Never place unused product down any indoor or outdoor drain.

LIMITED WARRANTY AND DISCLAIMER

FOR USE ONLY AS DIRECTED. THE MANUFACTURER NEITHER MAKES NOR INTENDS ANY EXPRESS OR IMPLIED WARRANTIES, INCLUDING ANY WARRANTY OF MERCHANTABILITY OR FITNESS FOR A PARTICULAR PURPOSE, WHICH ARE HEREBY EXPRESSLY DISCLAIMED. TO THE EXTENT CONSISTENT WITH APPLICABLE LAW, IN NO CASE SHALL THE MANUFACTURER BE LIABLE FOR INCIDENTAL, CONSEQUENTIAL, OR SPECIAL DAMAGES RESULTING FROM THE USE OR HANDLING OF THIS PRODUCT. If these terms are not acceptable, return this product unopened immediately to the point of purchase, and the purchase price will be refunded in full. The terms of this Limited Warranty and Disclaimer cannot be varied by any written or verbal statements or agreements at the point of sale or elsewhere.

APPENDIX

1. Advertising claims that may be presented on container labeling, advertisements, brochures, and other marketing/sales promotional materials:

Herbicide Benefit Claims:

- Kills [Lawn] Weeds plus Crabgrass in One [Easy] Step
- All-in-One Weed Solution
- Kills Crabgrass plus Broadleaf Weeds
- Two Products in One!
- Effective [Broadleaf] Weed Protection
- Effectively Protects Lawns from Broadleaf Weeds
- Weed Kill System
- Kills Listed Weeds
- Kills [Hard-to-Control] [Tough] Weeds
- All-in-One Lawn Weed Killer
- Kills to the Root
- Systemic [Herbicide] [Activity]
- Kills [Both] Broadleaf and [AND] Grassy Weeds [in One [Easy] Step]
- All-in-One Weed Killer for Lawns
- Gets the Root
- Dual Action Weed Control – Kills the Plant and the Root
- Kills the Weed, Kills the Root
- Kills Weeds not Lawns
- Kills Major Broadleaf Weeds
- Kills Weeds – Won't Harm Lawns
- Two-in-One Product that Kills Crabgrass & Broadleaf Weeds
- Kills both Crabgrass & Broadleaf weeds
- Double [Dual] [Two-Way] Action – Kills Broadleaf and Crabgrass Weeds
- Kills Both Broadleaf and Crabgrass Weeds
- Kills Lawn Weeds Plus Crabgrass
- Two Types of Weeds; One Solution
- Kills Listed Weeds
- All-In-One Weed Killer
- Kills Even Tough Weeds – roots & all
- [Also] Kills [Dandelion], [Crabgrass], and [Clover], Plus [200] Other [Listed] Weeds [As Listed]
- Controls over 200 Broadleaf Weeds
- Kills 200+ Weeds
- Kills over 200 Weeds [Plus Crabgrass in One Easy Step]
- Kills Crabgrass & Other Weeds in Your Lawn
- Targets Weeds
- Kills Weeds Fast
- Control lawn weeds *plus* crabgrass in your lawn with ease!
- Kills Weeds the First Time, Every Time, Guaranteed*
- Also Kills Dandelion and Clover Plus 200 Other Listed Weeds

PRODUCT FACTS:

What It Does: Kills major broadleaf and troublesome grass weeds including dandelion, chickweed, clover as well as crabgrass and foxtail. (See inside for complete list)

Where to Use: Lawns: Kills the weeds not the lawn when used as directed. [icon weeds]

When to Use: Apply when daytime temperatures are between 50° and 90°F, (do not apply above 85°F for bermudagrass).

Questions & Comments: [icon phone] [icon computer]

Call 1-800-xxx-xxxx or visit our website at www.companyname.com

General Marketing Claims:

- Will not Harm [Your] Lawn[s]
- Kills the Weeds, Not the Lawn
- Won't Harm Lawns
- Starts Working on Contact
- Fast Results
- Ideal for Spot Treatment
- Visible Results
- Easy to Use Power Sprayer
- Easy to Use
- No Pumping
- Battery Powered Sprayer
- Fast Coverage
- Easy & Fast Coverage
- Faster [Coverage] Than Pull & Spray
- Just Point & Shoot
- Save Time & Energy
- Always Ready-To-Spray
- No More Squeeze, Squeeze, Squeeze
- The Easiest Way to Spray
- No Pulling – Just Point & Shoot
- Revolutionary [Applicator] [Sprayer]
- Ideal for small areas.
- No messy cleanup.
- Guaranteed* Not to Harm Your Lawn
- Guaranteed* Not to Harm Lawns
- Guaranteed* Results
- 100% Satisfaction Guaranteed* (or your money back)

DOCUMENT CONTROL INFORMATION

1. Unique Label Identifier: 002217-00953.20170706.amend-proposed-clean

2. Reason for Issue: EPA Comments #1 + new sublabel with additional sprayer options, storage and disposal specific to sprayers