



OFFICE OF CHEMICAL SAFETY AND POLLUTION PREVENTION

WASHINGTON, D.C. 20460

April 12, 2024

Eric D. Smith
Vice President of Regulatory, Formulations, and GLP
PBI/Gordon Corporation
P.O. Box 860350
Shawnee, KS 66286

Subject: Label Amendment - Registration Review Mitigation for Carfentrazone-ethyl & Mecoprop-p
Product Name: EH-1448 HERBICIDE
EPA Registration Number: 2217-905
Application Dates: May 1, 2018; July 5, 2022; & February 9, 2024
Decision Numbers: 595289 & 595291

Dear Eric D. Smith:

The Agency, in accordance with the Federal Insecticide, Fungicide, and Rodenticide Act (FIFRA), as amended, has completed reviewing all the information submitted with your application to support the Registration Review of the above referenced product in connection with the Carfentrazone-ethyl & Mecoprop-p Interim Decisions, and has concluded that your submission is acceptable. The label referred to above, submitted in connection with registration under FIFRA, as amended, is acceptable.

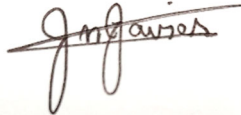
Should you wish to add/retain a reference to the company's website on your label, then please be aware that the website becomes labeling under the Federal Insecticide, Fungicide, and Rodenticide Act and is subject to review by the Agency. If the website is false or misleading, the product would be misbranded and unlawful to sell or distribute under FIFRA section 12(a)(1)(E). 40 CFR 156.10(a)(5) list examples of statements EPA may consider false or misleading. In addition, regardless of whether a website is referenced on your product's label, claims made on the website may not substantially differ from those claims approved through the registration process. Therefore, should the Agency find or if it is brought to our attention that a website contains false or misleading statements or claims substantially differing from the EPA approved registration, the website will be referred to the EPA's Office of Enforcement and Compliance Assurance.

A stamped copy of your labeling is enclosed for your records. This labeling supersedes all previously accepted labeling and must be used at your next label printing. You must

submit one copy of the final printed labeling before you release the product for shipment with the new labeling. In accordance with 40 CFR 152.130(c), you may distribute or sell this product under the previously approved labeling for 12 months from the date of this letter. After 12 months, you may only distribute or sell this product if it bears this new revised labeling or subsequently approved labeling. "To distribute or sell" is defined under FIFRA section 2(gg) and its implementing regulation at 40 CFR 152.3.

If you have any questions about this letter, please contact Caleb Carr by phone at (202) 566-0636, or via email at carr.caleb@epa.gov.

Sincerely,

A handwritten signature in black ink, appearing to read "Julie Javier", written over a horizontal line.

Julie Javier, Team Leader
Risk Management and Implementation Branch 4
Pesticide Re-Evaluation Division
Office of Pesticide Programs

ENCLOSURE: Stamped label

EH-1448 HERBICIDE

EPA Reg. No. 2217-905

For Home Lawns Only

ACCEPTED

April 12, 2024

Under the Federal Insecticide, Fungicide
and Rodenticide Act as amended, for the
pesticide registered under
EPA Reg. No. 2217-905

ACTIVE INGREDIENTS:

2,4-D, 2-ethylhexyl ester	0.184%
Mecoprop-p acid	0.022%
Dicamba acid	0.012%
Carfentrazone-ethyl	0.007%
OTHER INGREDIENTS:	99.775%
TOTAL	100.000%

THIS PRODUCT CONTAINS:

- 0.0153 lb. 2,4-Dichlorophenoxyacetic acid equivalent 0.122%
- 0.0018 lb. (+)-(R)-2-(2-methyl-4-chlorophenoxy) propionic acid equivalent per gallon or 0.022%
- 0.0010 lb. 3,6-dichloro-o-anisic acid equivalent acid equivalent per gallon or 0.012%
- 0.0006 lb. Ethyl α ,2-dichloro-5-[4(difluoromethyl)-4,5-dihydro-3-methyl-5-oxo-1H-1,2,4-triazol-1-yl]-4-fluorobenzenepropanoate per gallon or 0.007%

Isomer specific by AOAC Methods

KEEP OUT OF REACH OF CHILDREN

CAUTION

STOP! READ THE ENTIRE LABEL FIRST. OBSERVE ALL PRECAUTIONS AND FOLLOW DIRECTIONS CAREFULLY.

Mandatory Labeling Statements which will appear on different label components depending on packaging configuration.

Referral Statement: See attached booklet [inside pages] for complete Precautionary Statements and Directions for Use [(including First Aid and Storage and Disposal)].

Net Contents: _____

EPA Est. No. _____

Company Name and Address:

PBI/Gordon Corporation

P.O. Box 860350

Shawnee, Kansas 66286



{Note to Reviewer: Label text may also appear all or in part in [a foreign language] in addition to English.}

Sublabel 1

PRECAUTIONARY STATEMENTS

Hazards to Humans and Domestic Animals

CAUTION: Harmful if absorbed through the skin. Avoid contact with skin, eyes, or clothing. Wash thoroughly with soap and water after handling and before eating, drinking, chewing gum, using tobacco or using the toilet.

First Aid	
If on skin:	<ul style="list-style-type: none">• Take off contaminated clothing.• Rinse skin immediately with plenty of water for 15 - 20 minutes.• Call a poison control center or doctor for treatment advice.
Have the product container or label with you when calling a poison control center or doctor or going for treatment. You may also contact 1-877-800-5556 for emergency medical treatment advice.	

Environmental Hazards

This pesticide is toxic to fish and aquatic invertebrates and may adversely affect non-target plants. To protect the environment, do not allow pesticide to enter or run off into storm drains, drainage ditches, gutters or surface waters. Applying this product in calm weather when rain is not predicted for the next 24 hours will help to ensure that wind or rain does not blow or wash pesticide off the treatment area.

This product has properties and characteristics associated with chemicals detected in groundwater. The use of this product in areas where soils are permeable, particularly where the water table is shallow, may result in groundwater contamination. Application around a cistern or well may result in contamination of drinking water or groundwater.

Fish Advisory Statement: This product may be hazardous to aquatic organisms, particularly in clear, shallow water bodies that are adjacent to treated areas. Transport to water by runoff or spray drift of this product in areas where surface water is present, or intertidal areas below the mean high water mark, should be avoided. Do not contaminate water when disposing of equipment wash water or rinsate.

Non-target Organism Advisory Statement: This product is toxic to plants and may adversely impact the forage and habitat of non-target organisms, including pollinators, in areas adjacent to the treated site. Protect the forage and habitat of non-target organisms by minimizing spray drift.


DIRECTIONS FOR USE

It is a violation of Federal law to use this product in a manner inconsistent with its labeling.


RESTRICTIONS:

- Only use for sites, pests, and application methods specified on this labeling.
- Do not apply this product in a way that will contact any person or pet, either directly or through drift. Keep people and pets out of the area during application.



- [ Optional Icon] Do not allow people or pets to enter the treated area until spray has dried.
- Do not apply directly to or near water, storm drains, gutters, sewers, or drainage ditches. Do not apply within 25 feet of rivers, fish ponds, lakes, streams, reservoirs, marshes, estuaries, bays, and oceans. Do not apply when windy. To prevent product run-off, do not over water the treated area(s) to the point of runoff or apply when raining or when rain is expected that day.

- It is the responsibility of the applicator to avoid spray drift at the application site. Do not allow the herbicide solution to mist, drip, drift, or splash onto desirable broadleaf plants, as small amounts of this product can damage sensitive plants near the treated area. If desirable plants are accidentally sprayed, immediately rinsing leaves with water may reduce or eliminate plant damage.
- The maximum application rate is 1 gallon of product per 1,000 sq.ft. per application. [(0.44 lb 2,4-D ae, 0.08 lb MCPP-p ae, 0.04 lb dicamba ae, and 0.03 carfentrazone ai per acre per application)]
- The number of spot treatments is limited to 2 per year with a minimum of 30 days between applications.
- Do not apply as a fine mist because of potential for injury to desirable plants.
- Do not use this product on or near desirable plants, including contact of spray on exposed root systems or adventitious shoots within the drip line of desirable trees and shrubs, since injury may result.

PRODUCT FACTS			
Container treats up to	50 weeds	6 fluid ounce size	
Container treats more than	200 weeds	24 fluid ounce size	
Container treats more than	250 weeds	32 fluid ounce size	
Container treats more than	300 weeds	40 fluid ounce size	
Container treats more than	500 weeds	Half gallon size	
Container treats more than	1000 weeds	Gallon size	
Container treats more than	1333 weeds	1.33 gallon size	
KILLS WEEDS	Dandelion, Clover, Chickweed [illustration] and other listed broadleaf weeds.		
WHERE TO USE	ON LAWNS - bahiagrass, bentgrass, bermudagrass (hybrid and common), buffalograss, centipedegrass, fescue, Kentucky bluegrass, perennial ryegrass, St. Augustinegrass (except 'Floritam') and zoysiagrass [illustration] without harming lawn grasses when used as directed.		
	Questions, Comments or Medical Information Call 1-800- 884-3179 pbigordon.com		

Kills listed weeds in your lawn - won't harm lawn grasses when used as directed. EH-1448 Herbicide singles out weeds, enters through leaves and moves inside the weed to the roots.

OR

EH-1448 Herbicide kills listed broadleaf weeds in lawns - down to the root. Kills listed weeds - not lawn grasses when used according to directions. Ready-To-Use. No mixing.

BROADLEAF WEEDS CONTROLLED: EH-1448 Herbicide will control or suppress the following broadleaf weeds.			
Amaranth, purple	Cudweed	Mustard, black	Speedwell, corn
Amaranth, slender	Daisy, English	Mustard, Indian	Speedwell, ivyleaf
Aster, heath	Daisy, oxeye	Mustard, tansy	Speedwell, slender
Aster, white heath	Dandelion, common	Mustard, tumble	Speedwell, snow
Aster, purple	Dandelion, false	Mustard, white	Speedwell, thyme-leaf
Aster, white prairie	Day-flower	Mustard, blue	Spiny amaranth
Artichoke	Deadnettle	Mustard, hedge	Speedwell, Persian
Austrian fieldcress	Dichondra	Mustard, wormseed	Speedwell, purslane
Bedstraw, catch-weed	Dock, broadleaf	Nettle, stinging	Spurge, spotted
Bedstraw, smooth	Dock, curly	Nettle, tall	Spurge, prostrate
Bedstraw, northern	Dogbane	Nettle, wood	Star of Bethlehem
Bedstraw, pineywoods	Dog-fennel	Parsley-piert	Strawberry, Indian mock
Beggar-ticks, hairy	Dollarweed (Pennywort)	Parsnip	Tansy ragwort

BROADLEAF WEEDS CONTROLLED: EH-1448 Herbicide will control or suppress the following broadleaf weeds.

Betony, Florida	Dove-weed	Pearlwort	Tanweed
Bindweed, field	Elderberry	Pennycress	Thistle, blessed
Bindweed, hedge	Falseflax	Pepperweed, perennial	Thistle, bull
Bitter Wintercress	False sunflower	Pepperweed, Virginia (Peppergrass)	Thistle, Canada
Bitter-cress, hairy	Fiddleneck	Pigweed, prostrate	Thistle, Flodman's
Bitterweed	Filaree, redstem	Pigweed, redroot	Thistle, musk
Black-eyed Susan	Filaree, whitestem	Pigweed, Russian	Thistle, plumeless
Black medic	Fleabane, daisy (annual)	Pigweed, smooth	Thistle, prairie
Blood-flower milkweed	Fleabane, rough	Pigweed, tumble	Thistle, Russian
Blue lettuce	Galinsoga, hairy	Pineapple weed	Thistle, Scotch
Brassbuttons	Galinsoga, smallflower	Plains coreopsis (tickseed)	Thistle, wavy-leaf
Bristly oxxtongue	Goldenrod	Plantain, black-seed	Thistle, yellow
Broomweed	Ground ivy	Plantain, bracted	Trailing crown-vetch
Buckhorn	Groundsel	Plantain, broadleaf	Velvetleaf
Bull-nettle	Gumweed	Plantain, buckhorn	Vervain, blue
Bur-clover	Hairy fleabane	Plantain, hoary	Vervain, hoary
Burdock	Hawkweed, meadow	Plantain, narrow-leaf	Vervain, prostrate
Burweed, lawn	Hawkweed, mouse-ear	Plantain, slender	Vervain, tall
Buttercup, bulbous	Hawkweed, orange	Plantain, woolly	Vetch, bird
Buttercup, creeping	Hawkweed, yellow	Poison ivy	Vetch, hairy
Buttonweed, common (poorjoe)	Healall	Poison oak	Vetch, milk
Buttonweed, Virginia	Heart-leaf drymary	Pokeweed	Vetch, narrow-leaf
Carolina geranium	Hemp	Prairie sunflower	Vetch, wild
Carpetweed	Henbit	Prickly lettuce (compass plant)	Virginia creeper
Catnip	Hoary-cress	Prickly sida	Western clematis
Catsear, spotted (false dandelion)	Horsenettle	Prostrate knotweed	Western salsify
Chamber bitter	Horseweed	Puncturevine	Wild aster
Chickweed, common	Jimsonweed	Purslane, common	Wild buckweat
Chickweed, mouse-ear	Johnny-jumpup violet	Pusley, Brazilian	Wild carrot
Chickweed, sticky	Knawel	Pusley, Florida	Wild four-o'clock
Chicory	Knotweed, prostrate	Pusley, large flower	Wild garlic
Cinquefoil	Kochia	Ragweed, bur	Wild lettuce
Clover, crimson	Lambsquarters	Ragweed, common	Wild marigold
Clover, Alyce	Lespedeza	Ragweed, lance-leaf	Wild mustard
Clover, hop	Mallow, alkali	Ragweed, western	Wild onion
Clover, rabbit-foot	Mallow, bristly	Redstem filaree	Wild parsnip
Clover, red	Mallow, common	Rough cinquefoil	Wild radish
Clover, strawberry	Mallow, dwarf	Scarlet pimpernel	Wild rape
Clover, yellow sweet	Mallow, Venice	Shepherd's purse	Wild strawberry
Clover, white sweet	Marcela	Smartweed, ladysthumb	Wild sweet potato
Clover, white	Matchweed	Smartweed, pale	Wild violet
Cockle	Mexican-weed	Smartweed, Pennsylvania	Woodsorrel, creeping
Cocklebur	Moneywort	Smooth chaff-flower	Woodsorrel, violet
Cocklebur, spiny	Morningglory, bigroot	Smooth dock	Woodsorrel, yellow (<i>Oxalis</i>)
Common mullein	Morningglory, ivyleaf	Sorrel, red (sheep)	Woolly croton
Corn spurry	Morningglory, red	Sowthistle, annual	Wormseed
Creeping beggar-weed	Morningglory, tall	Sowthistle, spiny	Yarrow, common
Creeping Jenny (creeping Charlie)	Morningglory, wolly	Spanish needles	Yarrow, western
Cupid's shaving brush	Mugwort	Speedwell, bi-lobed	Yarrow, yellow
	Mustard, ball	Speedwell, common	Yellow Rocket

WHEN TO APPLY:

- Spray when weeds are actively growing.
- Spray when air temperatures are below 90°F and are not expected to exceed 90°F for 6 hours.
- Hard to kill weeds may require a repeat application in 30 days. Do not make a repeat application for 30 days. Limit of two applications per year.
- Rain or watering 6 hours after application will not wash away effectiveness.

- Weeds in newly seeded lawns may be sprayed after the lawn has been mowed 3 times.
- The number of spot treatments is limited to 2 per year.

IMPORTANT: Do not use this product for controlling weeds in vegetable gardens, flower beds or around shrubs or ornamental plants. Do not use on or around fruits, vegetables or flowers. Temporary discoloration may occur on St. Augustinegrass, centipedegrass, and bentgrass lawns. Do not apply as a fine mist because of potential for injury to desirable plants.

[OPTION 1: (PNS [II]/Pull 'N Sprayer [II]/SprayMaster)]

[[Applicator Name] [Applicator/Sprayer] Directions]

- Remove sprayer from side carrier and unwrap hose completely.
- Insert (color of plug) plug at end of hose into (color of spout) spout on cap [until it clicks].
- Flip up spout
- Point sprayer away from body.
- Grasp sprayer by the handle.
- Slowly pull ring at bottom of sprayer handle until it stops to ready the sprayer.
- Twist nozzle at end of sprayer to adjust spray pattern.
- Press and hold button on sprayer to begin spraying.
- Pull ring at sprayer bottom again as needed to continue spraying.

HOW TO USE:

Follow illustrations and instructions above. Twist nozzle at end of sprayer to adjust spray pattern. Point sprayer away from body and press sprayer button to begin spraying. Pull ring at sprayer bottom again as needed to continue spraying. Aim at center of weed and spray to lightly cover.

[HOW TO APPLY:

- Twist nozzle at end of sprayer to open [wide spray, medium spray, or stream].
- Point sprayer away from body and press spray button to begin spraying.
- Pull ring at sprayer bottom again as needed to continue spraying.
- Aim at center of weed and spray to lightly cover.]

[OPTION 2: (QCS) and Trigger Sprayer]

[[Applicator Name] [Applicator/Sprayer] Directions]

Quick Connect Sprayer Package Design Directions:

NOW with Quick Connect Sprayer. 1. Pull sprayer from bottle. 2. Pull [color] hose connector and coil from sprayer handle. 3. Insert hose connector into [color] sprout on cap until it clicks into place. 4. [Flip up spout. Turn sprayer nozzle to open, and spray.] [Twist [spout/ knob] to ON.]

Quick Connect Sprayer. 1. Remove sprayer. Pull cord ALL THE WAY OUT. 2. Insert red plug into spout (on cap) [until it clicks]. 3. [Flip up spout. Open nozzle at end of sprayer.] [Twist [spout/ knob] to ON.]

Trigger Sprayer Directions:

HOW TO USE:

Turn sprayer nozzle to open. Adjust spray nozzle to give a coarse spray. Aim at center of weed and spray to lightly cover. Spray any time weeds are actively growing.

[HOW TO APPLY:

- Turn sprayer nozzle to open.

- Adjust sprayer nozzle as desired.
- Aim at center of weed and spray to lightly cover.]

[OPTION 3: (Battery Powered Wand)]

[Applicator Name] [Applicator/Wand] Directions]

- [1. Remove] Remove [applicator name] wand from side [carrier] [holder] [clip]
 - [Unwrap hose completely]
 - [Remove protective strip from battery compartment to activate batteries]
- [2. Connect] Insert (color of plug) plug at end of hose into (color of spout) spout on cap [until it clicks]. [Flip up spout. Spout must remain up while spraying.] [Twist [spout/ knob] to ON.]
- [3. Extend] Flip open [applicator name] wand until it locks into position
- [4. Spray] Twist nozzle at end of [applicator name] wand to desired spray pattern. [Ensure trigger lock is disengaged before spraying.] Hold (color of trigger) trigger for continuous spray.

HOW TO APPLY/USE:

Follow illustrations and instructions above. Twist nozzle at end of [applicator name] wand to desired spray pattern. Point [applicator name] wand away from body and hold (color of trigger) trigger for continuous spray. Release trigger to stop spray. Aim at center of weed and spray to lightly cover.

[OPTIONAL HOW TO APPLY/USE WHEN USING MARKER]

[Follow illustrations and instructions above. Turn sprayer nozzle to desired position – FOAM or STREAM. FOAM marks treated weeds allowing you to easily see where you've sprayed. STREAM provides a coarse spray that does not foam. [Both settings provide the same weed control results.] Point [applicator name] wand away from body and hold (color of trigger) trigger for continuous spray. Release trigger to stop spray. Aim at center of weed and spray to lightly cover.]

[After Use: twist nozzle to OFF position. [Engage trigger lock.] Flip the [applicator name] wand closed and store on the side [carrier], [holder], [clip].]

Important Use Information: Do not submerge in water. When storing sprayer for long periods, remove batteries.

To replace batteries: Open battery compartment at bottom of [applicator name] wand. Remove used batteries and replace with four new AA batteries in correct position as marked per diagram inside battery compartment. Securely close battery compartment door. Always use a complete set of the same type when replacing batteries. Never mix alkaline, carbon-zinc or rechargeable batteries.

Optional Trouble shooting Section for Battery Powered Wand

[Troubleshooting Tips:

Problem: Sprayer does not spray (function).

Possible Cause: Batteries not installed properly.

Solution: See instructions for correct battery placement.

Problem: Sprayer makes a straining noise (Sprayer runs but nothing (no product) comes out).

Possible Cause: Nozzle is turned Off.

Solution: Turn nozzle to (desired) spray setting (position).

Possible Cause: Red (color) plug at end of hose is not flipped up.

Solution: Insert (color of plug) plug at end of hose into (color of spout) spout on cap until it clicks and flip up spout.

Possible Cause: Sprayer is not primed.

Solution: Press and hold button on sprayer for about X (10, 15, 20, 30) seconds to prime the sprayer.

Problem: Spray pattern is weak (or uneven) (product flow is uneven or dribbles out of nozzle).

Possible Cause: Weak batteries.

Solution: Install a fresh set of batteries.

Possible Cause: Red (color of plug) plug at end of hose is not flipped up.

Solution: Insert (color of plug) plug at end of hose into (color of spout) spout on cap until it clicks. (Attach coupler to the cap) and flip up spout. Possible Cause: Nozzle not fully open.

Solution: Turn nozzle to (desired) spray setting (position).]

[OPTION 4: (Easy-Shot System)]

[[Applicator Name] [Applicator] Directions]

[Insert:] Attach refill bottle by removing cap and twisting into [applicator name]. Do not over-tighten.

[Spray:] Twist nozzle at end of wand to desired spray pattern. Hold [color of trigger] trigger for continuous spray.

For hard to reach areas

[Extend:] Extend wand by sliding wand forward until it locks into place

[Remove:] Remove wand and aim at target while holding the [applicator name] facing toward the ground.

[OPTIONAL DIRECTIONS]:

[[Clean:] Remove cartridge and clean applicator after each use. [Always clean applicator before switching from one product to another.] See [applicator name] applicator for cleaning directions.

- Remove refill cartridge from [applicator name]
- Remove cap from cleaning cartridge and fill with tap water
- Replace cap and insert cleaning cartridge by twisting into [applicator name]
- Spray in an area that is designated by this product label until cleaning cartridge is empty.]

HOW TO APPLY/USE:

Follow illustrations and instructions above. Twist nozzle at end of sprayer to desired spray pattern. Point sprayer away from body and hold [color of trigger] trigger for continuous spray. Aim at center of weed and spray to lightly cover.

[[After Use:] Twist nozzle to CLOSED position.]

Important Use Information: Do not submerge in water. When storing sprayer for long periods, remove batteries.

To replace batteries: Open battery compartment on side of [applicator name]. Remove used batteries and replace with four new AA batteries in correct position as marked per diagram inside battery compartment. Securely close battery compartment door. Always use a complete set of the same type when replacing batteries. Never mix alkaline, carbon-zinc or rechargeable batteries.

[OPTIONAL [REUSE AND] REFILL DIRECTIONS]

How to attach [Applicator Name] [applicator] to [Lawn Crabgrass and Weed Killer] [Product name] [Refill Bottle]:

Removing [Applicator Name] [applicator] from original bottle:

- Remove the [applicator name] [applicator] by pulling the [color of plug] plug from the [color of spout] spout on cap.
- At the bottom of the side [clip] [carrier] [holder] press the middle tab up and slide the [clip] [carrier] [holder] upwards to remove it from the bottle.

Adding [Applicator name] [applicator] to [Product Name]:

- Slide the side [clip] [carrier] [holder] downward on the knob located [at right-hand] [on the] side of the refill container.
- Insert [color of plug] plug at end of hose into [color of spout] spout on cap [until it clicks]. [Illustration]

How to refill [Lawn Crabgrass and Weed Killer] [Product Name] with [Quick Pump] [Applicator Name] [applicator]:

- Remove the pump handle on the Quick Pump/Applicator Name by twisting it counterclockwise.
- Remove the cap from the [Lawn Crabgrass and Weed Killer] [Product Name] bottle/container.
- Pour the product carefully and directly into the [Quick Pump/Applicator Name] container. Do Not fill above [2”/3”/4”] from the top of the container. DO NOT add water.
- Secure the pump handle back on the container by twisting it clockwise until tight.

STORAGE AND DISPOSAL

Do not contaminate water, food, or feed by storage and disposal. Keep from freezing. Keep pesticide in original container. Do not put into food or drink containers. Avoid contamination of feed and foodstuffs. Store in a cool, dry place, preferably in a locked storage area.

[For Option 1: PNS [II], Pull ‘N Spray [II], SprayMaster] [Refillable Container]

PESTICIDE STORAGE: Completely discharge/dispense product in sprayer prior to storage. Twist sprayer nozzle to the OFF position. Flip down [color of spout] spout on cap. NO NEED TO DISCONNECT SPRAYER HOSE FROM CAP. Place sprayer back inside carrier on bottle with the nozzle facing down.

[For Option 2: Quick Connect Sprayer and bottle] [Refillable Container]

PESTICIDE STORAGE: Flip down spout to close. No need to disconnect trigger sprayer. Close nozzle on trigger sprayer. Snap sprayer back in place.

[For conventional trigger sprayers larger than 24 fl.oz.] [Refillable Container]

PESTICIDE STORAGE: Place trigger sprayer under handle on container to keep sprayer above the level of contents.

[For conventional trigger sprayers] [Refillable Container]

PESTICIDE STORAGE: Rotate nozzle to closed position. **OR** Turn sprayer nozzle to “OFF”.

[For Option 3: For Wand Applicator] [Refillable Container]

PESTICIDE STORAGE: Flip down / twist (color of spout) spout on cap. NO NEED TO DISCONNECT SPRAYER HOSE FROM CAP. Completely discharge/dispense product in sprayer prior to storage. Twist sprayer nozzle to the OFF position. [Engage trigger lock.] Flip the [applicator name] wand closed and place [sprayer] back in side carrier [clip] [holder].

[For Option 4: For Easy Shot System] [Refillable Container]


PESTICIDE STORAGE: Replace cap.

[For Nonrefillable Container]

PESTICIDE DISPOSAL AND CONTAINER HANDLING: Nonrefillable container. Do not reuse or refill this container. **If empty:** Place in trash or offer for recycling if available. **If partly filled:** Call you local solid waste agency for disposal instruction. Never place unused product down any indoor or outdoor drain.

[For Refillable Container]

PESTICIDE DISPOSAL AND CONTAINER HANDLING: [Product Name] Follow instructions in the REFILL section when using [applicator name]. Do not reuse or refill this container unless the directions for use allow refill according to the directions contained on the REFILL section. **If empty:** Place in trash or offer for recycling if available. **If partly filled:** Call you local solid waste agency for disposal instruction. Never place unused product down any indoor or outdoor drain.

 Questions, Comments or Medical Information call 1-800- 884-3179
pbigordon.com

NOTICE: To the extent consistent with applicable law, the buyer assumes all risks of use, storage or handling of this product not in accordance with label directions.

LIMITED WARRANTY AND DISCLAIMER

FOR USE ONLY AS DIRECTED. TO THE EXTENT CONSISTENT WITH APPLICABLE LAW, THE MANUFACTURER NEITHER MAKES NOR INTENDS ANY EXPRESS OR IMPLIED WARRANTIES, INCLUDING ANY WARRANTY OF MERCHANTABILITY OR FITNESS FOR A PARTICULAR PURPOSE, WHICH ARE HEREBY EXPRESSLY DISCLAIMED. TO THE EXTENT CONSISTENT WITH APPLICABLE LAW IN NO CASE SHALL THE MANUFACTURER BE LIABLE FOR INCIDENTAL, CONSEQUENTIAL, OR SPECIAL DAMAGES RESULTING FROM THE USE OR HANDLING OF THIS PRODUCT. If these terms are not acceptable, return this product unopened immediately to the point of purchase, and the purchase price will be refunded in full. The terms of this LIMITED WARRANTY AND DISCLAIMER cannot be varied by any written or verbal statements or agreements at the point of sale or elsewhere.

Sublabel 2

PRECAUTIONARY STATEMENTS

Hazards to Humans and Domestic Animals

CAUTION: Harmful if absorbed through the skin. Avoid contact with skin, eyes, or clothing. Wash thoroughly with soap and water after handling and before eating, drinking, chewing gum, using tobacco or using the toilet.

First Aid	
If on skin:	<ul style="list-style-type: none">• Take off contaminated clothing.• Rinse skin immediately with plenty of water for 15 - 20 minutes.• Call a poison control center or doctor for treatment advice.
Have the product container or label with you when calling a poison control center or doctor or going for treatment. You may also contact 1-877-800-5556 for emergency medical treatment advice.	

Environmental Hazards

This pesticide is toxic to fish and aquatic invertebrates and may adversely affect non-target plants. To protect the environment, do not allow pesticide to enter or run off into storm drains, drainage ditches, gutters or surface waters. Applying this product in calm weather when rain is not predicted for the next 24 hours will help to ensure that wind or rain does not blow or wash pesticide off the treatment area.

This product has properties and characteristics associated with chemicals detected in groundwater. The use of this product in areas where soils are permeable, particularly where the water table is shallow, may result in groundwater contamination. Application around a cistern or well may result in contamination of drinking water or groundwater.

Fish Advisory Statement: This product may be hazardous to aquatic organisms, particularly in clear, shallow water bodies that are adjacent to treated areas. Transport to water by runoff or spray drift of this product in areas where surface water is present, or intertidal areas below the mean high water mark, should be avoided. Do not contaminate water when disposing of equipment wash water or rinsate.

Non-target Organism Advisory Statement: This product is toxic to plants and may adversely impact the forage and habitat of non-target organisms, including pollinators, in areas adjacent to the treated site. Protect the forage and habitat of non-target organisms by minimizing spray drift.

DIRECTIONS FOR USE

It is a violation of Federal law to use this product in a manner inconsistent with its labeling.

1. Use Restrictions

- Only use for sites, pests, and application methods specified on this labeling.
- Do not apply this product in a way that will contact any person or pet, either directly or through drift. Keep people and pets out of the area during application.
- Do not allow people or pets to enter the treated area until spray has dried.
- Do not apply directly to or near water, storm drains, gutters, sewers, or drainage ditches. Do not apply within 25 feet of rivers, fish ponds, lakes, streams, reservoirs, marshes, estuaries, bays, and oceans. Do not apply when windy. To prevent product run-off, do not over water the treated area(s) to the point of runoff or apply when raining or when rain is expected that day.
- Do not use this product for controlling weeds in vegetable gardens, flower beds or around shrubs or ornamental plants. Do not use on or around fruits, vegetables or flowers. Temporary discoloration

may occur on St. Augustinegrass, centipedegrass, and bentgrass lawns. Do not apply as a fine mist because of potential for injury to desirable plants.

- It is the responsibility of the applicator to avoid spray drift at the application site. Do not allow the herbicide solution to mist, drip, drift, or splash onto desirable broadleaf plants, as small amounts of this product can damage sensitive plants near the treated area. If desirable plants are accidentally sprayed, immediately rinsing leaves with water may reduce or eliminate plant damage
- The maximum application rate is 1 gallon of product per 1,000 sq.ft. per application. [(0.44 lb 2,4-D ae, 0.08 lb MCPP-p ae, 0.04 lb dicamba ae, and 0.03 carfentrazone ai per acre per application)]
- The number of spot treatments is limited to 2 per year with a minimum of 30 days between applications. Spot treatment is defined as a treatment area no greater than 1,000 square feet per acre.
- Do not use this product on or near desirable plants, including contact of spray on exposed root systems or adventitious shoots within the drip line of desirable trees and shrubs, since injury may result.
- Limit of two applications per year with a minimum of 30 days between applications.

2. Where To Use

EH-1448 Herbicide is intended for use only on residential [home] lawns, including: Bahiagrass, Bentgrass, Bermudagrass (hybrid and common), Buffalograss, Centipedegrass, Fescue, Kentucky Bluegrass, Perennial Ryegrass, St. Augustinegrass (except 'Floritam') and Zoysiagrass without harming lawn grasses when used as directed.

3. How To Apply

[3.1 Option 1: AccuShot Sprayer]

[Option 1A] [Operating Instructions] [AccuShot Sprayer Directions]

1. Remove sprayer from side holder. [Unwrap the tubing] [Gently pull tubing out]. [Graphic depiction of pulling the tubing out]
2. Remove seal from top of cap. Unplug cap. [Graphic depiction of unplugging cap]
3. Securely snap the [green] plug into hole on cap. [Graphic depiction of plugging the hose into the hole in the cap]
4. Remove plastic tab near [top] [bottom] of sprayer to activate batteries. [Graphic depiction of removing plastic tab]
5. Twist nozzle to adjust spray from CLOSE to SPRAY or STREAM. [Graphic depiction of twisting nozzle]
6. [When priming the sprayer, hold sprayer level to the ground. Sprayer may not prime if it is held at an angle. Once primed, it will spray in any direction. (Graphical representation of sprayer being held level to the ground.)]

[Option 1B] [AccuShot Sprayer Directions]

1. Remove cap and replace with reusable AccuShot Sprayer. Make sure sprayer cap is tightly closed before use.
2. Twist nozzle to adjust spray from CLOSE to SPRAY or STREAM. [Graphic depiction of twisting nozzle]
3. [When priming the sprayer, hold sprayer level to the ground. Sprayer may not prime if it is held at an angle. Once primed, it will spray in any direction. (Graphic depiction of sprayer being held level to the ground.)]

How To Use The AccuShot Sprayer

- Aim toward target [site] [area to be treated], and away from people and pets.
- [To improve accuracy, use slider to extend wand.] [Use slider to extend wand and to improve accuracy.]

- Press the trigger to spray.
- Release the trigger to stop spray.

After use:

1. Twist nozzle completely to CLOSE position.
2. Secure sprayer upright [tip down] in [holster] [holder].
3. **Failure to adjust nozzle completely to CLOSE position and properly secure sprayer in [holster] [holder] may result in leakage and damage to property or injury to people or animals.**
[Keep reusable AccuShot sprayer for use with EH-1448 Herbicide]

To replace batteries:

1. [Slide battery compartment door to unlatch and open.] [Use screwdriver to open battery compartment. [Push release button near nozzle and lift up on battery hatch.]
2. Remove used batteries and insert [four] [two] new AA batteries **in correct positions** as marked per diagram inside of battery compartment. Never insert the positive end where the negative end belongs and vice versa. **Always** use a complete set of new batteries of the same type when replacing batteries. **Never** mix alkaline, carbon-zinc or rechargeable batteries.
3. Securely close battery compartment door.
4. **Always** follow manufacturer's recommendations for use and disposal of batteries.

Additional Operating Notes:

- Do not submerge in water.
- Before each use, inspect sprayer carefully, making sure hose is flexible and not kinked, worn or cracked, and that all connections are tight.
- When storing sprayer for prolonged periods, remove batteries.

[Option 1C with Snap Adapt Cap] [AccuShot Sprayer Directions]

1. Shake well before each use.
2. Remove sprayer from side [holster] [holder]. [Unwrap the tubing] [Gently pull tubing out]. [Graphic depiction of pulling the tubing out]
3. Open flip top closure [Graphic depiction]
4. Securely snap the hose plug into opening in cap until it snaps into place. [Graphic depiction of opening closure]
5. Slide switch on hose plug counter-clockwise to "OPEN" [Graphic depiction of sliding switch]
6. Remove plastic tab near [top] [bottom] of sprayer to activate batteries. [Graphic depiction]
7. Twist nozzle to adjust spray from CLOSE to SPRAY or STREAM. [Graphic depiction of removing plastic tab]
8. [When priming the sprayer, hold sprayer level to the ground. Squeeze and hold trigger until liquid comes out the nozzle. Sprayer may not prime if it is held at an angle. Once primed, it will spray in any direction. (Graphic depiction of sprayer being held level to the ground.)]

[Option 1D with Snap Adapt Cap] [AccuShot Sprayer Directions]

1. Remove cap and replace with reusable AccuShot cap and Sprayer. Make sure sprayer cap is tightly closed before use
2. Twist nozzle to adjust spray from CLOSE to SPRAY or STREAM. [Graphic depiction of twisting nozzle]
3. Slide switch on hose plug counter-clockwise to "OPEN" [Graphic depiction of sliding switch]
4. [When priming the sprayer, hold sprayer level to the ground. Sprayer may not prime if it is held at an angle. Once primed, it will spray in any direction. (Graphic depiction of sprayer being held level to the ground.)]

How To Use AccuShot (with Snap Adapt Cap)

- Aim toward target [site] [area to be treated], and away from people and pets.
- [To improve accuracy, use slider to extend wand.] [Use slider to extend wand and to improve accuracy.]

- Press the trigger to spray.
- Release the trigger to stop spray.

After use:

1. Twist sprayer nozzle completely to CLOSE position.
2. Turn hose plug switch clockwise to “CLOSED”.
3. Secure sprayer upright [tip down] in [holster] [holder].
4. **Failure to adjust nozzle completely to CLOSE position and properly secure sprayer in [holster] [holder] may result in leakage and damage to property or injury to people or animals.**

[Keep reusable AccuShot sprayer for use with EH-1448 Herbicide]

To replace batteries:

1. [Slide battery compartment door to unlatch and open.] [Use screwdriver to open battery compartment [Push release button near nozzle and lift up on battery hatch.]
2. Remove used batteries and insert [four] [two] new AA batteries **in correct positions** as marked per diagram inside of battery compartment. Never insert the positive end where the negative end belongs and vice versa. **Always** use a complete set of new batteries of the same type when replacing batteries. **Never** mix alkaline, carbon-zinc or rechargeable batteries.
3. Securely close battery compartment door.
4. **Always** follow manufacturer’s recommendations for use and disposal of batteries.

Additional Operating Notes:

- Do not submerge in water.
- Before each use, inspect sprayer carefully, making sure hose is flexible and not kinked, worn or cracked, and that all connections are tight.
- When storing sprayer for prolonged periods, remove batteries.

[3.2 Option 2 [Directions For Trigger Sprayer Product]

HOW TO USE

1. Shake well before each use.
2. Adjust nozzle to narrow fan spray, to prevent excessive wetting and waste of product. Spray just enough to cover area to be treated.
3. Avoid contamination of food, feedstuffs and domestic water supplies. All food processing surfaces and utensils should be covered during treatment or thoroughly washed before use. Remove pets, birds and cover fish aquariums before spraying.

[3.3 Option 3 [Directions For Nested Sprayer Applicator]

HOW TO USE

1. Shake well before each use.
2. Pull tab outward.
3. Rotate lock ring counterclockwise to unlock.
4. Pull sprayer to uncoil tubing.
5. Turn sprayer nozzle one half turn counter-clockwise. Hold sprayer below the level of container and prime by pumping trigger 10 - 15 times until product is dispensed. Adjust nozzle to fine spray or jet stream as needed.
6. To store, turn nozzle to “OFF” position and return sprayer to bottle opening.
7. Drape tubing through slot in the spray handle.
8. Turn lock ring clockwise to lock.
9. Avoid contamination of food, feedstuffs and domestic water supplies. All food processing surfaces and utensils should be covered during treatment or thoroughly washed before use. Remove pets, birds and cover fish aquariums before spraying.

[3.4 Option 4 [Directions For Captive Sprayer Product]

[Option 4A]

HOW TO USE

BEFORE USE:

1. Shake well before each use.
2. Peel sticker from flip-top cap and open cap. Discard sticker.
3. Remove sprayer from its slot beneath the bottle handle and remove and discard plastic wrap. Pull black hose tip to completely extend tubing.
4. Firmly press black hose tip into opening in cap until it snaps into place.
5. Hold sprayer below the level of the container and prime by pumping trigger several times until product is dispensed.
6. Adjust nozzle to desired setting.

AFTER USE:

1. To store, turn sprayer nozzle off.
2. DO NOT disconnect hose.
3. Return sprayer to its slot. Hose can be pushed back into sprayer handle.

[Option 4B] [Captive Sprayer Application (with Snap Adapt Cap)]

HOW TO USE

BEFORE USE:

1. Shake well before each use.
2. Open flip top closure [Graphic depiction of opening top]
3. Remove sprayer from its slot beneath the bottle handle and unwrap the tubing. Pull hose plug to completely extend tubing.
4. Firmly press hose plug into opening in cap until it snaps into place.
5. Slide switch on hose plug counter-clockwise to "OPEN" [Graphic depiction of sliding switch]
6. Adjust nozzle to desired setting, SPRAY or STREAM
7. Hold sprayer below the level of the container and prime by pumping trigger several times until product is dispensed.

AFTER USE:

1. To store, turn sprayer nozzle off.
2. Turn hose plug switch clockwise to "CLOSED"
3. DO NOT disconnect hose.
4. Return sprayer to its slot. Hose can be pushed back into sprayer handle.

[3.5 Option 5: EZ Spray™]

[Option 5A] [Directions For EZ Spray™ Product][Operating Instructions for EZ Spray™]

1. Remove sprayer from side holder. [Unwrap the tubing] [Gently pull tubing out]. [Graphic depiction of pulling the tubing out]
2. Remove seal from top of cap. Unplug cap. [Graphic depiction of unplugging cap]
3. Securely snap the [green] plug into hole on cap. [Graphic depiction of snapping plug into the cap]
4. Remove plastic tab near [top] [bottom] of sprayer to activate batteries. [Graphic depiction of removing plastic tab]
5. Twist nozzle to adjust spray from CLOSE to SPRAY or STREAM. [Graphic depiction of adjusting nozzle]
6. [When priming the sprayer, hold sprayer level to the ground. Sprayer may not prime if it is held at an angle. Once primed, it will spray in any direction. (Graphic depiction of holding sprayer level to the ground.)]

How To Use The EZ SPRAY™

- Aim toward target [site] [area to be treated], and away from people and pets.
- [To improve accuracy, use slider to extend wand.] [Use slider to extend wand and to improve accuracy.]
- Press the trigger to spray.
- Release the trigger to stop spray.

After use:

1. Twist nozzle completely to CLOSE position.
2. Secure sprayer upright [tip down] in [holster] [holder].
3. **Failure to adjust nozzle completely to CLOSE position and properly secure sprayer in [holster] [holder] may result in leakage and damage to property or injury to people or animals.**

To replace batteries:

1. [Slide battery compartment door to unlatch and open.] [Use screwdriver to open battery compartment [Push release button near nozzle and lift up on battery hatch.]
2. Remove used batteries and insert [four] [two] new AA batteries **in correct positions** as marked per diagram inside of battery compartment. Never insert the positive end where the negative end belongs and vice versa. **Always** use a complete set of new batteries of the same type when replacing batteries. **Never** mix alkaline, carbon-zinc or rechargeable batteries.
3. Securely close battery compartment door.
4. **Always** follow manufacturer's recommendations for use and disposal of batteries.

Additional Operating Notes:

- Do not submerge in water.
- Before each use, inspect sprayer carefully, making sure hose is flexible and not kinked, worn or cracked, and that all connections are tight.
- When storing sprayer for prolonged periods, remove batteries.

[Option 5B] [EZSPRAY™ Directions]™ (with Snap Adapt Cap)

1. Shake well before each use
2. Remove sprayer from side [holster] [holder]. [Unwrap the tubing] [Gently pull tubing out]. [Graphic depiction of pulling the tubing out]
3. Open flip top closure [Graphic depiction of opening top]
4. Securely snap the hose plug into opening in cap until it snaps into place. [Graphic depiction of plugging the hose into the hole in the cap]
5. Slide switch on hose plug counter-clockwise to "OPEN" [Graphic depiction of sliding switch]
6. Remove plastic tab near [top] [bottom] of sprayer to activate batteries. [Graphic depiction of removing plastic tab]
7. Twist nozzle to adjust spray from CLOSE to SPRAY or STREAM. [Graphic depiction of twisting nozzle]
8. [When priming the sprayer, hold sprayer level to the ground. Squeeze and hold trigger until liquid comes out the nozzle. Sprayer may not prime if it is held at an angle. Once primed, it will spray in any direction. (Graphic depiction of sprayer being held level to the ground.)]

HOW TO USE THE EZSPRAY™ (with Snap Adapt Cap)

- Aim toward target [site] [area to be treated], and away from people and pets.
- [To improve accuracy, use slider to extend wand.] [Use slider to extend wand and to improve accuracy.]
- Press the trigger to spray.
- Release the trigger to stop spray.

After use:

1. Twist sprayer nozzle completely to CLOSE position.
2. Turn hose plug switch clockwise to "CLOSED".
3. Secure sprayer upright [tip down] in [holster] [holder].
4. **Failure to adjust nozzle completely to CLOSE position and properly secure sprayer in [holster] [holder] may result in leakage and damage to property or injury to people or animals.**

To replace batteries:

1. [Slide battery compartment door to unlatch and open.] [Use screwdriver to open battery compartment [Push release button near nozzle and lift up on battery hatch.]
2. Remove used batteries and insert [four] [two] new AA batteries **in correct positions** as marked per diagram inside of battery compartment. Never insert the positive end where the negative end belongs and vice versa. **Always** use a complete set of new batteries of the same type when replacing batteries. **Never** mix alkaline, carbon-zinc or rechargeable batteries.
3. Securely close battery compartment door.
4. **Always** follow manufacturer's recommendations for use and disposal of batteries.

Additional Operating Notes:

- Do not submerge in water.
- Before each use, inspect sprayer carefully, making sure hose is flexible and not kinked, worn or cracked, and that all connections are tight.
- When storing sprayer for prolonged periods, remove batteries.

4. Use Precautions

- Apply when weeds are young and actively growing.
- Apply when air temperatures are below 90°F and are not expected to exceed 90°F for 6 hours.
- Hard to kill weeds may require a repeat application in 30 days.
- Rain or watering 6 hours after application will not wash away effectiveness.
- Weeds in newly seeded lawns may be sprayed after the lawn has been mowed 3 times.

5. Broadleaf Weeds Controlled

EH-1448 Herbicide will control or suppress the following broadleaf weeds.

Amaranth, purple	Cudweed	Mustard, black	Speedwell, corn
Amaranth, slender	Daisy, English	Mustard, Indian	Speedwell, ivyleaf
Aster, heath	Daisy, oxeye	Mustard, tansy	Speedwell, slender
Aster, white heath	Dandelion, common	Mustard, tumble	Speedwell, snow
Aster, purple	Dandelion, false	Mustard, white	Speedwell, thyme-leaf
Aster, white prairie	Day-flower	Mustard, blue	Spiny amaranth
Artichoke	Deadnettle	Mustard, hedge	Speedwell, Persian
Austrian fieldcress	Dichondra	Mustard, wormseed	Speedwell, purslane
Bedstraw, catch-weed	Dock, broadleaf	Nettle, stinging	Spurge, spotted
Bedstraw, smooth	Dock, curly	Nettle, tall	Spurge, prostrate
Bedstraw, northern	Dogbane	Nettle, wood	Star of Bethlehem
Bedstraw, pineywoods	Dog-fennel	Parsley-piert	Strawberry, Indian mock
Beggar-ticks, hairy	Dollarweed (Pennywort)	Parsnip	Tansy ragwort
Betony, Florida	Dove-weed	Pearlwort	Tanweed
Bindweed, field	Elderberry	Pennycress	Thistle, blessed
Bindweed, hedge	Falseflax	Pepperweed, perennial	Thistle, bull
Bitter Wintercress	False sunflower	Pepperweed, Virginia	Thistle, Canada
Bitter-cress, hairy	Fiddleneck	(Peppergrass)	Thistle, Flodman's
Bitterweed	Filaree, redstem	Pigweed, prostrate	Thistle, musk
Black-eyed Susan	Filaree, whitestem	Pigweed, redroot	Thistle, plumeless
Black medic	Fleabane, daisy	Pigweed, Russian	Thistle, prairie
Blood-flower milkweed	(annual)	Pigweed, smooth	Thistle, Russian
Blue lettuce	Fleabane, rough	Pigweed, tumble	Thistle, Scotch

Brassbuttons	Galinsoga, hairy	Pineapple weed	Thistle, wavy-leaf
Bristly oxtongue	Galinsoga, smallflower	Plains coreopsis (tickseed)	Thistle, yellow
Broomweed	Goldenrod	Plantain, black-seed	Trailing crown-vetch
Buckhorn	Ground ivy	Plantain, bracted	Velvetleaf
Bull-nettle	Groundsel	Plantain, broadleaf	Vervain, blue
Bur-clover	Gumweed	Plantain, buckhorn	Vervain, hoary
Burdock	Hairy fleabane	Plantain, hoary	Vervain, prostrate
Burweed, lawn	Hawkweed, meadow	Plantain, narrow-leaf	Vervain, tall
Buttercup, bulbous	Hawkweed, mouse-ear	Plantain, slender	Vetch, bird
Buttercup, creeping	Hawkweed, orange	Plantain, woolly	Vetch, hairy
Buttonweed, common (poorjoe)	Hawkweed, yellow	Poison ivy	Vetch, milk
Buttonweed, Virginia	Healall	Poison oak	Vetch, narrow-leaf
Carolina geranium	Heart-leaf drymary	Pokeweed	Vetch, wild
Carpetweed	Hemp	Prairie sunflower	Virginia creeper
Catnip	Henbit	Prickly lettuce (compass plant)	Western clematis
Catsear, spotted (false dandelion)	Hoary-cress	Prickly sida	Western salsify
Chamber bitter	Horsenettle	Prostrate knotweed	Wild aster
Chickweed, common	Horseweed	Puncturevine	Wild buckweed
Chickweed, mouse-ear	Jimsonweed	Purslane, common	Wild carrot
Chickweed, sticky	Johnny-jumpup violet	Pusley, Brazilian	Wild four-o'clock
Chicory	Knawel	Pusley, Florida	Wild garlic
Cinquefoil	Knotweed, prostrate	Pusley, large flower	Wild lettuce
Clover, crimson	Kochia	Ragweed, bur	Wild marigold
Clover, Alyce	Lambsquarters	Ragweed, common	Wild mustard
Clover, hop	Lespedeza	Ragweed, lance-leaf	Wild onion
Clover, rabbit-foot	Mallow, alkali	Ragweed, western	Wild parsnip
Clover, red	Mallow, bristly	Redstem filaree	Wild radish
Clover, strawberry	Mallow, common	Rough cinquefoil	Wild rape
Clover, yellow sweet	Mallow, dwarf	Scarlet pimpernel	Wild strawberry
Clover, white sweet	Mallow, Venice	Shepherd's purse	Wild sweet potato
Clover, white	Marcela	Smartweed, ladysthumb	Wild violet
Cockle	Matchweed	Smartweed, pale	Woodsorrel, creeping
Cocklebur	Mexican-weed	Smartweed, Pennsylvania	Woodsorrel, violet
Cocklebur, spiny	Moneywort	Smooth chaff-flower	Woodsorrel, yellow (<i>Oxalis</i>)
Common mullein	Morningglory, bigroot	Smooth dock	Woolly croton
Corn spurry	Morningglory, ivyleaf	Sorrel, red (sheep)	Wormseed
Creeping beggar-weed	Morningglory, red	Sowthistle, annual	Yarrow, common
Creeping Jenny (creeping Charlie)	Morningglory, tall	Sowthistle, spiny	Yarrow, western
Cupid's shaving brush	Morningglory, wolly	Spanish needles	Yarrow, yellow
	Mugwort	Speedwell, bi-lobed	Yellow Rocket
	Mustard, ball	Speedwell, common	

STORAGE AND DISPOSAL

[For Option 1: AccuShot Sprayer]

PESTICIDE STORAGE Turn the nozzle to "CLOSE" position. To prevent leakage, attach sprayer to clip. Store this product only in its original container in a secure storage area away from sources of heat or open flame and in an area inaccessible to children and pets. Protect product from freezing.

PESTICIDE DISPOSAL AND CONTAINER HANDLING: Do not discard the AccuShot Sprayer. Keep the AccuShot Sprayer for use on EH-1448 Herbicide. Nonrefillable container. Do not reuse or refill the container unless the directions for use allow a different (concentrated) product to be diluted in the container. **If empty:** Place in trash or offer for recycling if available. **If partly filled:** Call your local solid waste agency for disposal instructions. Never place unused product down any indoor or outdoor drain.

[For Option 2 or Option 4: Trigger Sprayer or Captive Sprayer]

PESTICIDE STORAGE: Store in cool dry area away from heat or open flame.

PESTICIDE DISPOSAL AND CONTAINER HANDLING: If empty: Nonrefillable container. Do not reuse or refill this container. Place in trash or offer for recycling, if available. **If partly filled:** Call your local solid waste agency for disposal instructions. Never place unused product down any indoor or outdoor drain.

[For Option 3: Nested Sprayer]

PESTICIDE STORAGE: Turn the nozzle to “OFF” position and store with sprayer above the level of liquid in container to prevent leakage.

PESTICIDE DISPOSAL AND CONTAINER HANDLING: If empty: Nonrefillable container. Do not reuse or refill this container. Place in trash or offer for recycling, if available. **If partly filled:** Call your local solid waste agency for disposal instructions. Never place unused product down any indoor or outdoor drain.

[For Option 5: EZSPRAY Sprayer]

PESTICIDE STORAGE: Turn the nozzle to “CLOSE” position. To prevent leakage, attach sprayer to clip. Store this product only in its original container in a secure storage area away from sources of heat or open flame. Protect product from freezing.

PESTICIDE DISPOSAL AND CONTAINER HANDLING: If empty: Nonrefillable container. Do not reuse or refill this container. Offer for recycling, if available. **If partly filled:** Call your local solid waste agency for disposal instructions. Never place unused product down any indoor or outdoor drain.

[For Option 5B: AccuShot Sprayer and EZ Sprayer with Snap Adapt Cap]

PESTICIDE STORAGE: Turn the nozzle to “CLOSE” position. To prevent leakage, place sprayer in holster. Store this product only in its original container in a secure storage area away from sources of heat or open flame and in an area inaccessible to children and pets. Keep from freezing.

PESTICIDE DISPOSAL Do not discard the AccuShot Sprayer. Keep the AccuShot Sprayer for use on EH-1448 Herbicide. Nonrefillable container. Do not reuse or refill this container unless the directions for use allow a different (concentrated) product to be diluted in the container. **If empty:** Place in trash or offer for recycling if available. **If partly filled:** Call your local solid waste agency for disposal instructions. Never place unused product down any indoor or outdoor drain.

LIMITED WARRANTY AND DISCLAIMER

FOR USE ONLY AS DIRECTED. TO THE EXTENT CONSISTENT WITH APPLICABLE LAW, THE MANUFACTURER NEITHER MAKES NOR INTENDS ANY EXPRESS OR IMPLIED WARRANTIES, INCLUDING ANY WARRANTY OF MERCHANTABILITY OR FITNESS FOR A PARTICULAR PURPOSE, WHICH ARE HEREBY EXPRESSLY DISCLAIMED. TO THE EXTENT CONSISTENT WITH APPLICABLE LAW, IN NO CASE SHALL THE MANUFACTURER BE LIABLE FOR INCIDENTAL, CONSEQUENTIAL, OR SPECIAL DAMAGES RESULTING FROM THE USE OR HANDLING OF THIS PRODUCT. If these terms are not acceptable, return this product unopened immediately to the point of purchase, and the purchase price will be refunded in full. The terms of this LIMITED WARRANTY STATEMENT cannot be varied by any written or verbal statements or agreements at the point of sale or elsewhere.

NOTICE: To the extent consistent with applicable law, buyer assumes all responsibility for safety and use not in accordance with directions.

APPENDIX

1. Advertising claims that may be presented on container labeling, advertisements, brochures, and other marketing/sales promotional materials:

Herbicide Benefit Claims:

- EH-1448 Herbicide kills listed weeds, not the lawn.
- EH-1448 Herbicide kills listed weeds - not lawns.
- EH-1448 HERBICIDE for the lawn.
- Use EH-1448 Herbicide to control listed weeds everywhere around (or in) your lawn.
- Kills listed weeds down to the root.
- Kills listed broadleaf weeds in your lawn.
- Won't harm most lawn grasses when used as directed.
- Ideal for spot treating individual lawn weeds.
- Kills Dandelion, Clover and Other Listed Broadleaf Weeds—Won't Harm Lawns when used as directed.
- Kills: Dandelion, Clover, Plantain, Chickweed, Oxalis, Spurge, Henbit, and (Many) Other Listed Weeds/Broadleaf Weeds.
- Kills listed Weeds—Not Lawn Grasses
- Kills listed Weeds—Not Lawns, Rain Proof in Hours
- KILLS LISTED BROADLEAF LAWN WEEDS - DOWN TO THE ROOT
- Kills over 250 weeds
- Kills the toughest listed weeds
- Kills the Root
- Kills major listed broadleaf weeds including Dandelion, Clover, Oxalis, Chickweed, Knotweed, Plantain, Henbit, Spurge and many others.
- The easier way to kill weeds
- EH-1448 HERBICIDE —the easy way to kill lawn weeds
- Kills listed broadleaf weeds
- Kills weeds as listed
- Won't harm lawn grasses when used as directed
- Kills dandelion, clover and other listed weeds
- Kills the toughest weeds as listed
- Kills listed weeds down to the root including dandelion and clover
- Kills listed weeds – not lawns

General Marketing Claims:

- Results in 24 hours
- Rain-Proof(TM) - Rain or watering more than 1 hour after application will not wash away effectiveness
- Rain-Proof(TM) in 1 hour
- Rain Fast in 1 hour
- Results in Hours
- The [Company Name] Guarantee: If for any reason you, the consumer, are not satisfied with this product, mail us your original proof of purchase to obtain a full refund of your purchase price.
- [Company Name] & Your Environment - Your yard is a place for your family and pets to enjoy. That's why [Company Name] products are designed with care to provide effective solutions to weed problems. Follow instructions for appropriate usage, storage and disposal.
- 33% more than 1 gallon size
- Ideal for large or small jobs [areas]
- Great for large or small jobs [areas]
- READY-TO-USE - NO MIXING
- Outdoor use only
- Water based
- Results in hours
- Rainfast in 1 hour

- Ready-to-spray
- Guaranteed* to work or your money back
 *If you are not satisfied with this product for any reason, send your written request for a refund to
 The address below, together with the original dated store receipt showing the price you paid. Please
 allow 6-8 weeks for processing.
- Refill

Applicator Claims/Statements:






- Now with Quick Connect Sprayer
- Quick Click Sprayer
- Quick & Easy to Use
- No Leaks or Mess
- Easy to Store
- EASY-TO-USE
- The easy way to spray EH-1448 Herbicide
- The easier way to spray
- No more squeeze, squeeze, squeeze
- Precise control for maximum accuracy
- Consistent spray for maximum accuracy
- Revolutionary [new] applicator
- Change the way you spray
- Precise control—sprays only what you want
- Adjustable spray nozzle for maximum control
- Adjustable spray pattern for maximum control
- Cut your time spent spraying in half
- You're always ready to spray
- It's always ready to spray
- Targets weeds in tight places
- Save time and energy
- Saves time and energy
- One pull = 34 trigger sprays
- One pull delivers 34 trigger sprays
- Improved [Applicator]!/Improved [Application]!
- Improved Applicator System!/Improved Application System!
- Improved Applicator Device!/Improved Application Device!
- Improved [!]
- NEW (PNS [II]/Pull 'N Spray [II]/SprayMaster) the easy way to spray
- No pumping, just pull
- Pull out slowly
- Applicator Name
- Continuous Spray
- No more bending [or kneeling]
- Continuous [Adjustable] Spray [Wand]
- Up to X minutes of continuous spray
- Over X minutes of continuous spray
- Extended Reach
- Refill [Bottle] [Pack] [Container]
- Refill [bottle] for [comfort wand] [trigger]
- [Just] [Plug in/Connect/Attach Applicator & Spray/Apply
- [Just] Plug into/Connect/Attach [Refill] & Spray/Apply
- Works with/use with/great for/great with/Perfect with/Perfect for [comfort wand] [trigger]
- Refill/Recharge/Fill-Up/Reload/Renew for [Applicator Name]
- Refills/Recharges/Reloads/Renews [Applicator Name]

- Fills Up [Applicator Name]
- Fill-Up for [Applicator Name]]
- Works with [Applicator Name]
- Just plug [Applicator name] in and it's ready to spray]
- Refill/Recharge/Fill-Up/Reload/Renew Available]
- [Applicator Name] Recharge/Refill/Fill-Up/Reload/Renew]
- [Applicator Name] Refill/Recharge/Reload/Renew Cartridge]
- Easy to use sprayer
- Continuous action power sprayer
- Continuous power trigger
- Press and hold technology
- [New] AccuShot
- [New] AccuShot Sprayer
- [Just] aim & spray
- Comfort-Power-Precision
- With extendable wand [for improved accuracy]
- With adjustable wand [for improved accuracy]
- For use with reusable AccuShot sprayer
- Reduces hand fatigue [when spraying around entire home]
- [X] AA batteries included
- Always lock after use

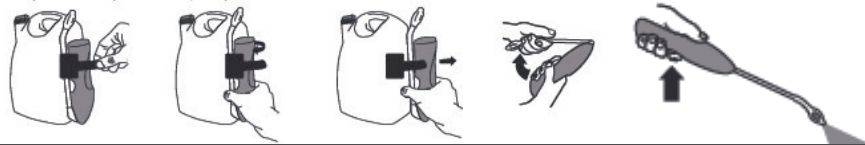
Optional/Example Graphics

The following are representative examples of graphics that could be used in the marketed label. If the graphic is used, minor changes to the exact color, shapes or orientation of items depicted, or the amount or size of graphic may occur based on marketing decisions and the available space on the label.

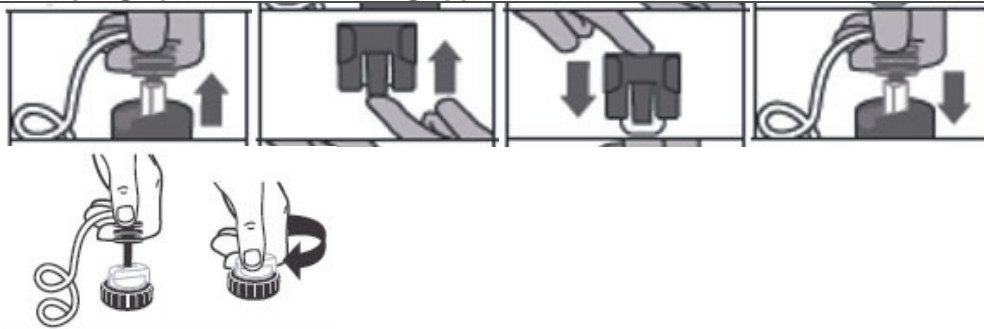
Graphic optionally used on outward facing label panels	
Example graphics potentially used in conjunction with explanatory text.	
	<p>For optional use in conjunction with efficacy claims (ex. Won't harm lawn grasses when used as directed)</p>
	<p>For optional use to depict use site.</p>

	For optional use with speed of results claims (ex. Results in hours)
	For optional use in conjunction/proximity to consumer access numbers on label.
	For optional use in conjunction/proximity to consumer access numbers on label.
	For optional use in conjunction/proximity to battery powered sprayer statements. (Ex. Continuous Spray)
	For optional use in conjunction/proximity to sprayer statements. (Ex. Always lock after use)

Example graphics potentially used in conjunction with explanatory text for Battery Operated Sprayer Directions for Use.



Example graphics for connecting applicators:



DOCUMENT CONTROL INFORMATION

1. Unique Label Identifier: 002217-00905.20240229.amend-proposed-clean.doc

2. Reason for Issue: Carfentrazone-ethyl & MCP P Interim Registration Review Decision. Merged previously acknowledged notifications.

Internal Usage Notes
Associated Container Label: