



UNITED STATES ENVIRONMENTAL PROTECTION AGENCY  
WASHINGTON, D.C. 20460

30 JUN 2008

OFFICE OF  
PREVENTION, PESTICIDES AND  
TOXIC SUBSTANCES

PBI Gordon Corporation  
1217 West 12<sup>th</sup> Street  
Kansas City, MI 64101

Subject: EPA Reg. 2217-859 (EH-1401 Herbicide) 2, 4-D Reregistration Label Amendment

The labeling referred to above is in compliance with the 2, 4-D RED provided that you:

Both Sub Labels:

- 1) Submit and/or cite all data required for registration/reregistration review of your product when the Agency requires all registrants of similar products to submit data.
- 2) To the Warranty section add "to the extent consistent with applicable law" in front of "the exclusive remedy", "seller shall not be liable", and "in no case shall seller".

Commercial Use Label:

- 1) The text "See engineering controls for additional requirements" should be deleted from the label since no engineering controls are required or are listed on the label.
- 2) The amount of active ingredient appearing throughout the label must be clarified to specify the amount of 2, 4-D, Dicamba, MCPP-p, and dithiopyr used. The text currently appearing on the label is confusing.
- 3) A retreatment interval of at least 30 days must be added to the directions for use in New York state.

Homeowner Sublabel

- 1) The PPE text should be relocated to the Hazards to Humans and Domestic Animals section and be revised to read:

**"CAUTION**

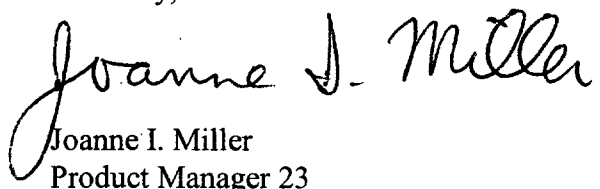
Causes moderate eye irritation. Harmful if absorbed through skin or if swallowed. Avoid contact with skin, eyes, or clothing. Handlers should wear long sleeved shirt and long pants, shoes plus socks, and chemical-resistant gloves made of any waterproof material."

Page 2  
EPA Reg. 2217-859

- 2) Reference to engineering controls must be deleted for this homeowner use product.
- 3) The text "Not for use on turf being grown for sale or other commercial use as sod, or for commercial seed or for research purposes" is not appropriate for this product and should be deleted from the label.

Submit 1 copy of the revised label for the record. If you have any questions please call Erik Kraft at 703-308-9358 or email at Kraft.Erik@epa.gov.

Sincerely,



Joanne I. Miller  
Product Manager 23  
Herbicide Branch  
Registration Division (7505P)

3/20

**SUBLABEL 1**  
**Intended for commercial users.**

**EH-1401 HERBICIDE**

**EPA Reg. No. 2217-859**

**In the State of New York:** This product may be applied only by commercial applicators at no more than 218 pounds (0.35 lb. of active ingredient) per acre (5.0 lb. per 1,000 sq. ft.) per year. Use of this product in Nassau and Suffolk Counties is prohibited.

**ACTIVE INGREDIENT:**

2,4-D (CAS 94-75-7).....	0.64%
Mecoprop-p (16484-77-8).....	0.14%
Dicamba (1918-00-9).....	0.06%
Dithiopyr (97886-45-8).....	0.16%
<b>OTHER INGREDIENTS:</b> .....	<b>99.00%</b>
<b>TOTAL</b> .....	<b>100.00%</b>

**THIS PRODUCT CONTAINS:**

- 12.8 lbs. 2,4-dichlorophenoxyacetic acid equivalent per ton.
- 2.8 lbs. (+)-(R)-2-(2 methyl-4-chlorophenoxy)propionic acid equivalent per ton.
- 1.2 lbs. 3,6-dichloro-o-anisic acid equivalent per ton.
- 3.2 lbs. dithiopyr per ton.

Isomer Specific by AOAC Methods

<b>GUARANTEED FERTILIZER ANALYSIS</b>	
Total Nitrogen (N).....	x.x%
x.x% Ammoniacal Nitrogen	
x.x% Water Insoluble Nitrogen	
x.x% Urea Nitrogen	
x.x% Other Water Soluble Nitrogen	
Available Phosphate (P2O5).....	x.x%
Soluble Potash (K2O).....	x.x%
Iron (Fe).....	x.x%
Nutrient Sources: (Guaranteed analysis and nutrient sources to be supplied based on fertilizer analysis used by manufacturer).	

**ACCEPTED**  
**with COMMENTS**  
**In EPA Letter Dated:**  
**30 JUN 2008**

Under the Federal Insecticide,  
Fungicide, and Rodenticide Act  
as amended, for the pesticide  
registered under EPA Reg. No.

2217-859

**KEEP OUT OF REACH OF CHILDREN**

**CAUTION**

**NOTICE:** Read the entire label. Use only according to label directions.

**STOP! READ THE ENTIRE LABEL FIRST. OBSERVE ALL PRECAUTIONS AND FOLLOW DIRECTIONS CAREFULLY.**

# **PRECAUTIONARY STATEMENTS**

## **Hazards to Humans and Domestic Animals**

**CAUTION:** Causes moderate eye irritation. Harmful if absorbed through skin or if swallowed. Avoid contact with skin, eyes or clothing.

## **Personal Protective Equipment**

Some materials that are chemical-resistant to this product are natural rubber. If you want more options, follow the instructions for category A on an EPA chemical-resistance category selection chart.

All loaders, applicators, and other handlers must wear:

- long-sleeved shirt and long pants,
- shoes plus socks.
- chemical-resistant gloves

See engineering controls for additional requirements.

## **User Safety Requirements**

Follow manufacturer's instructions for cleaning/maintaining PPE. If no such instructions for washables exist, use detergent and hot water. Keep and wash PPE separately from other laundry.

Discard clothing and other absorbent material that have been drenched or heavily contaminated with the product's concentrate. Do not reuse them.

### **User Safety Recommendations**

- Users should wash hands before eating, drinking, chewing gum, using tobacco, or using the toilet.
- Users should remove clothing/PPE immediately if pesticide gets inside. Then wash thoroughly and put on clean clothing. If pesticide gets on skin, wash immediately with soap and water.
- Users should remove PPE immediately after handling this product. Wash the outside of gloves before removing. As soon as possible, wash thoroughly and change into clean clothing.

### **First Aid**

<b>If in eyes:</b>	<ul style="list-style-type: none"> <li>• Hold eye open and rinse slowly and gently with water for 15 - 20 minutes.</li> <li>• Remove contact lenses, if present, after the first 5 minutes, then continue rinsing eye.</li> <li>• Call a poison control center or doctor for treatment advice.</li> </ul>
<b>If swallowed:</b>	<ul style="list-style-type: none"> <li>• Call a poison control center or doctor immediately for treatment advice.</li> <li>• Have person sip a glass of water if able to swallow.</li> <li>• Do not induce vomiting unless told to do so by a poison control center or doctor.</li> <li>• Do not give anything by mouth to an unconscious person.</li> </ul>
<b>If on skin or clothing:</b>	<ul style="list-style-type: none"> <li>• Take off contaminated clothing.</li> <li>• Rinse skin immediately with plenty of water for 15 - 20 minutes.</li> <li>• Call a poison control center or doctor for treatment advice.</li> </ul>
<b>If inhaled:</b>	<ul style="list-style-type: none"> <li>• Move person to fresh air.</li> <li>• If person is not breathing, call 911 or an ambulance, then give artificial respiration, preferably by mouth-to-mouth, if possible.</li> <li>• Call a poison control center or doctor for treatment advice.</li> </ul>

Have the product container or label with you when calling a poison control center or doctor or going for treatment. For additional information in case of emergency, call toll free 1-877-800-5556.

### **Environmental Hazards**

This pesticide may be toxic to fish and aquatic invertebrates and may adversely affect non-target plants. Do not apply directly to water, to areas where surface water is present, or to intertidal areas below the mean high water mark. Drift and runoff may be hazardous to aquatic organisms in water adjacent to treated areas. Do not contaminate water when disposing of equipment wash waters or rinsate.

This chemical has properties and characteristics associated with chemicals detected in groundwater. The use of this chemical in areas where soils are permeable, particularly where the water table is shallow, may result in groundwater contamination. Application around a cistern or well may result in contamination of drinking water or groundwater.

### **DIRECTIONS FOR USE**

It is a violation of Federal law to use this product in a manner inconsistent with its labeling.

#### **General Precautions and Restrictions:**

- Do not enter or allow people (or pets) to enter the treated area until dusts have settled.
- Do not apply this product in a way that will contact workers or other persons, either directly or through drift. Only protected handlers may be in the area during application.
- If incorporation is accomplished by watering-in, do not enter or allow entry to the treated areas (except those involved in watering) until the watering-in is complete and the surface is dry.

Read all precautions and directions for use carefully before applying this product.

Not for use on turf being grown for sale or other commercial use as sod, or for commercial seed production, or for research purposes.

### **GENERAL INFORMATION**

EH-1401 Herbicide provides postemergent control of over 200 broadleaf weeds and preemergent or early postemergent control of many annual weed grasses in established cool and warm season turf.

#### **ORNAMENTAL LAWNS AND TURFGRASS:**

##### **WHERE TO USE:**

EH-1401 Herbicide is intended to be applied by lawn care operators, maintenance applicators, and service technicians for use in ornamental lawns and turf established in institutional, ornamental, and residential/domestic sites. Institutional sites are defined as turf areas around properties or facilities providing a service to public or private organizations including, but not limited to hospitals, nursing homes, schools, museums, libraries, sport facilities, golf courses (excluding greens), and office buildings. Ornamental sites include turfgrass established around residences, parks, streets, retail outlets, cemeteries, industrial and institutional buildings. Finally, residential/domestic sites are defined as areas associated with the household or home life including, but not limited to apartment complexes, condominiums, and patient care areas of nursing homes, mental institutions, hospitals, or convalescent homes.

##### **EH-1401 Herbicide is recommended for the following established turf species:**

**Established Cool Season Turfgrasses**—Kentucky bluegrass, perennial ryegrass, fine and tall fescues.

Use of this product on certain varieties of fine fescue may result in undesirable turf injury. The following fine fescue varieties have been found to be sensitive to this product: 'Atlanta', 'Banner', 'Beauty', 'Bilgart', 'CF-2', 'Enjoy', 'HF-93', 'Highlight', 'Ivalo', 'Jamestown', 'Koket', 'Majenta', 'Mary', 'Pennlawn', 'Tamara', 'Tatjana', 'Waldorf', and 'Waldina'. Not all varieties of fine fescue have been tested.

**Established Warm Season Turfgrasses**—Bahagrass, bermudagrass, buffalograss, centipedegrass, zoysiagrass, St. Augustinegrass (except 'Floritam').

**Do not** use this product on seedling buffalograss in the spring of the first year of establishment until the turfgrass is fully green and has established new roots.

Do not use EH-1401 Herbicide on creeping bentgrass, colonial bentgrass, dichondra, carpetgrass, or 'Floritam' St. Augustinegrass.

**Note:** It is not possible to evaluate all turfgrass varieties for tolerance to this product. It is suggested that the user evaluate the response of turfgrass varieties not listed on this label on a limited area, at recommended use rates, prior to initiating large scale use.

### **USE PRECAUTIONS AND RESTRICTIONS**

#### **Precautions for Reseeding, Overseeding, or Sprigging:**

- Reseeding, overseeding or sprigging of areas treated with this product within 10 weeks after a single application of this product, or within 16 weeks after a split application program totaling 5.0 lbs./1,000 sq. ft. (0.38 lb. active ingredient per acre) or more may inhibit the establishment of desirable turfgrasses.
- When reseeding or overseeding, follow established cultural practices for seedbed preparation, seeding, irrigation and fertilization.

Use of EH-1401 Herbicide on lawns and ornamental turfgrasses that are not well established, or have been weakened by stress due to mechanical operations, pests, excessive temperatures, or lack of moisture may increase the chances for turfgrass injury. Allow turfgrass weakened by these stresses to recover before application of this product.

Do not use this product where desirable clovers are present or apply (spread) the granules onto flowers, vegetables or ornamental shrubbery. Do not spread over exposed roots of trees and ornamentals. Do not exceed specified dosage for any area; be particularly careful within dripline of trees and other ornamental species.

Do not use clippings from treated areas for mulching, vegetables, or fruit trees.

Do not contaminate domestic or irrigation waters.

Do not use this product on or near desirable plants, including within the drip line of the roots of desirable trees and shrubs, since injury may result.

<b>WEEDS CONTROLLED</b>			
<b>When applied as directed, EH-1401 Herbicide will control the following weeds:</b>			
Annual Bluegrass (Poa annua)	Barnyardgrass	Crowfootgrass	Kikuyugrass (seedling)
Annual Ryegrass	Crabgrass (large, smooth, and Southern)	Foxtail (green and yellow)	Smutgrass (seedling)
		Goosegrass	
<b>Broadleaf Weeds:</b>			
Annual yellow sweetclover	Clover, white	Musk thistle	Spiny amaranth
Aster	Cockle	Mustard	Spiny cocklebur
Austrian fieldcress	Cocklebur	Narrowleaf plantain	Spiny sowthistle
Bedstraw	Common mullein	Narrowleaf vetch	Spotted catsear
Beggarticks	Creeping jenny	Nettle	Spotted spurge
Betony, Florida	Cudweed	Orange hawkweed	Spurweed
Bindweed, field	Curly dock	Oriental cocklebur	Stinging nettle
Bird vetch	Daisy, English	Oxalis	Strawberry, India mock
Bitter wintercress	Daisy fleabane	Parsley-piert	Tall nettle
Bittercress, hairy	Daisy, oxeye	Parsnip	Tall vervain
Bitterweed	Dandelion	Pearwort	Tansy ragwort
Black-eyed Susan	Dichondra	Pennycress	Tansy mustard
Black medic	Dogfennel	Pepperweed	Tanweed
Black mustard	Dollarweed	Pigweed	Thistle
Blackseed plantain	False dandelion	Pineappleweed	Trailing crownvetch
Blessed thistle	Falseflax	Pineywoods bedstraw	Tumble mustard
Bloodflower milkweed	False sunflower	Plains tickseed	Tumble pigweed
Blue lettuce	Fiddleneck	Plantain	Velvetleaf
Blue vervain	Florida pusley	Poison ivy	Venice mallow
Bracted plantain	Frenchweed	Poison oak	Virginia buttonweed
Brassbuttons	Galinsoga	Pokeweed	Virginia creeper
Bristly oxtongue	Goathead	Poorjoe	Virginia pepperweed
Broadleaf dock	Goldenrod	Prairie sunflower	Wavyleaf bullthistle
Broadleaf plantain	Ground ivy	Prickly lettuce	Western clematis
Broomweed	Gumweed	Prickly sida	Western salsify
Buckhorn plantain	Hairy fleabane	Prostrate knotweed	White mustard
Bulbous buttercup	Hawkweed	Prostrate pigweed	Wild aster
Bull thistle	Healall	Prostrate spurge	Wild buckwheat
Bullnettle	Heartleaf drymary	Prostrate vervain	Wild carrot
Burclover	Heath aster	Puncturevine	Wild four-o'clock
Burdock	Hedge bindweed	Purslane, common	Wild garlic
Burning nettle	Hedge mustard	Ragweed	Wild geranium
Burweed	Henbit	Red sorrel	Wild lettuce
Buttercup	Hoary cress	Redroot pigweed	Wild marigold
Buttonweed	Hoary plantain	Redstem filaree	Wild mustard
Canada thistle	Hoary vervain	Rough cinquefoil	Wild onion
Carolina geranium	Horsenettle	Rough fleabane	Wild parsnip
Carpetweed	Jimsonweed	Russian pigweed	Wild radish
Catchweed bedstraw	Knawel	Scarlet pimpernel	Wild rape
Catnip	Knotweed	Scotch thistle	Wild sweet potato
Catsear	Kochia	Sheep sorrel	Wild vetch
Chickweed, common	Lambsquarters	Sheperdspurse	Woodsorrel
Chickweed, mouseear	Lespedeza	Slender plantain	Woolly croton
Chicory	Mallow	Smallflower galinsoga	Woolly morningglory
Cinquefoil	Matchweed	Smooth dock	Woolly plantain
Clover, crimson	Mexicanweed	Smooth pigweed	Wormseed
Clover, hop	Milk vetch	Sorrel	Yarrow
Clover, red	Morningglory	Sowthistle	Yellow rocket
Clover, strawberry	Mouseear hawkweed	Spanishneedles	Yellowflower pepperweed
Clover, sweet	Mugwort	Speedwell	and other broadleaf weeds

## WHEN TO APPLY

**Established Lawns:** Apply when broadleaf weeds are actively growing and prior to germination or tillering of annual grasses. EH-1401 Herbicide may be applied as a single application or as a split application in spring, summer or fall.

**Newly Seeded Areas:** When establishing a new lawn of Kentucky bluegrass, perennial ryegrass and/or tall fescue, this product may be applied 2 weeks after the first sign of grass germination. For other turfgrass varieties, wait until the grass is well established (3 mowings) before applying this product.

## HOW TO APPLY

For optimum weed control apply to recently mowed turf when foliage is moist. When possible, delay mowing or irrigation for several days after treatment. Uniform coverage is essential for best results.

### Application Directions for Turf

#### Tips for Improved Weed Control

- For best results, apply this product within a few days after mowing and delay mowing again for a few days after the application.
- The dithiopyr component in this product is not effective until activated by rainfall or irrigation. Performance is improved if application is followed by 1/2 inch of rainfall or sprinkler irrigation. Erratic weed control may result if not activated by rainfall or irrigation within 30 days after application.
- Use of split (half-rate applications) spaced 5 to 10 weeks apart may provide improved weed control.

### Control of Crabgrass

#### Preemergence and Early Postemergence Control

- This product provides preemergent control of crabgrass in established turfgrasses (including the large, smooth, and southern species) when applied prior to germination and emergence of crabgrass.
- This product also provides early postemergent control of crabgrass if applied prior to the 3-leaf stage of growth or first tiller as described below. This stage of growth generally corresponds to the time when crabgrass seedlings first become visible in the established turfgrass. The practical benefit of early postemergent crabgrass control is a 2 to 4 week longer period of time (window of application) during which crabgrass control can be achieved.

#### Application Frequency and Timing

This product may be applied as a single application, as a split application, or as a sequential application for crabgrass control in the spring, summer or fall as described in the following use programs.

#### Spring Applications

For applications made in the spring or early summer, use an appropriate application rate corresponding to one of the two control programs listed in Table 1. Specific rate recommendations are based on the user's location, the mowing height of the turfgrass, and whether the application timing is considered to be preemergence or early postemergence. The duration of residual weed control provided by this product is directly related to application rate, but will vary somewhat depending on weather, weed pressure, turfgrass competitiveness, and the users' location within a region.

**Use Program 1** for preemergent control at sites where turfgrass is cut relatively high (e.g., homeowner lawns). This program provides 3 to 5 months of preemergent crabgrass control. This program will also provide early postemergent control of crabgrass up to the 3-leaf stage or first tiller at sites where turfgrass is cut relatively high (e.g., homeowner lawns).

**Use Program 2** for preemergent control at sites where (a) turfgrass is cut relatively low (e.g., golf fairways). And (b) turfgrass maintenance or weed control has been conducted during the previous year. This program provides 4 to 6 months of preemergent crabgrass control. This program may also be used for early postemergent control of crabgrass up to the 3-leaf stage or first tiller at sites where turfgrass is cut relatively high (e.g., homeowner lawns).



**Maximum use rate restrictions:**

- **New York State:** This product may be applied only by commercial applicators at no more than 218 pounds (0.35 lb. of active ingredient) per acre (5.0 lb. per 1,000 sq. ft.) per year. Use of this product in Nassau and Suffolk Counties is prohibited.
- **Other States:** Do not apply more than 5 pounds of product per 1000 square feet of turfgrass per application. If necessary, a second application may be made no sooner than 30 days after the first. Do not apply more than 10 pounds of product per 1000 square feet per year. [note to reviewer: the following information may be omitted from the final printed label: 5 pounds of this product contains 1.39 lbs 2,4-D (ae), 0.30 lbs mecoprop-p (ae), 0.13 lbs dicamba (ae), and 0.35 lbs dithiopyr.]

Region	Application Rates	Program 1	Program 2
<b>All states except NY, and parts of states not included in transition, south, coastal south or west.</b>	Lbs./acre	130	152
	Lbs./1,000 sq. ft.	3.0	3.5
	Lbs. ai/acre	0.21	0.25
<b>New York State only</b>	Lbs./acre	152	218
	Lbs./1,000 sq. ft.	3.5	5.0
	Lbs. ai/acre	0.25	0.35
<b>Transition:</b> DE, KS, KY, MD, MO, NJ, VA, southeastern PA, southern areas of IL, IN, OH, & coastal areas of CT & RI.	Lbs./acre	152	218
	Lbs./1,000 sq. ft.	3.5	5.0
	Lbs. ai/acre	0.25	0.35
<b>South:</b> AL, AR, GA, LA, MS, NC, NM, OK, SC, TN, & TX.	Lbs./acre	218	152 + 152
	Lbs./1,000 sq. ft.	5.0	3.5 + 3.5†
	Lbs. ai/acre	0.35	0.25 + 0.25
<b>Coastal South:</b> HI, FL & southern coastal areas of AL, GA, LA, MS, NC, SC, & TX.	Lbs./acre	152 + 152	196 + 196
	Lbs./1,000 sq. ft.	3.5 + 3.5†	4.5 + 4.5†
	Lbs. ai/acre	0.25 + 0.25	0.31 + 0.31
<b>West:</b> AZ, CA, & NV. In this climatically diverse region, use the higher rates in local areas with longer crabgrass seasons.	Lbs./acre	130 to 152	152 to 196
	Lbs./1,000 sq. ft.	3.0 to 3.5†	3.5 to 4.5†
	Lbs. ai/acre	0.21 to 0.25	0.25 to 0.31

† Split applications may be made 5 to 10 weeks apart.

**Use of Split or Sequential Applications:** Split or sequential applications may be used to provide improved weed control or to provide extended weed control in areas with long growing seasons. Split applications may be made with the rates in Table 1 being split between two applications made 5 to 10 weeks apart. When longer periods of control are required, sequential applications may be made in late summer or fall following a spring application or in the spring following a fall application, provided the maximum application rate per year is not exceeded. Refer to the "Maximum Use Rates" section above and separate rate restrictions for the State of New York.

**Fall Applications:**

This product can also be applied in the late summer through early fall (late August through November) at use rates listed in Table 1 for "Program 2" to provide control of crabgrass through the early part of the next following spring for season long control of crabgrass.

**CALIBRATION INSTRUCTIONS AND SPREADER SETTINGS:**

- This product may be applied with rotary-type spreaders. For best results, apply this product evenly and uniformly avoiding streaking, skips or overlaps.
- Calibrate the spreader according to the manufacturer's directions. Initial spreader settings may require adjustment to deliver the recommended rate under actual application conditions.
- Apply this product uniformly over the treatment area. More uniformity of application can usually be achieved by applying one-half of the required amount of product over the treatment area and then applying the remaining one-half in a different direction (e.g., at a right angle to the previous direction). Avoid streaking, skips or overlaps during application

- For 3.0 pounds of product per 1,000 square feet of turfgrass: Check your spreader on 330 square feet and adjust to apply at the rate of 1 pound of product per 330 square feet.
- For 3.5 pounds of product per 1,000 square feet of turfgrass: Check your spreader on 285 square feet and adjust to apply at the rate of 1 pound of product per 285 square feet.
- For 4.0 pounds of product per 1,000 square feet of turfgrass: Check your spreader on 250 square feet and adjust to apply at the rate of 1 pound of product per 250 square feet.
- For 4.5 pounds of product per 1,000 square feet of turfgrass: Check your spreader on 225 square feet and adjust to apply at the rate of 1 pound of product per 225 square feet.
- For 5.0 pounds of product per 1,000 square feet of turfgrass: Check your spreader on 200 square feet and adjust to apply at the rate of 1 pound of product per 200 square feet.
- Check equipment frequently to verify calibration and proper functioning.

Spreader	Delivers lbs./1,000 sq. ft.				
	3.0 lbs.	3.5 lbs	4.0 lbs	4.5 lbs	5.0 lbs.
LESCO® Rotary calibration gauge setting #	X	X	X	X	X
Ortho® Drop (5000)	X	X	X	X	X
Ortho® Rotary (6000)	X	X	X	X	X
Precision® Red Devil® Rotary	X	X	X	X	X
Quaker® Rotary	X	X	X	X	X
Republic® EZ Drop	X	X	X	X	X
Republic® EZ Grow	X	X	X	X	X
Republic® EZ Rotary	X	X	X	X	X
Scotts® Drop (PF3)	X	X	X	X	X
Scotts® Easy Green	X	X	X	X	X
Scotts® Speedy Green	X	X	X	X	X
True Temper Rotary	X	X	X	X	X

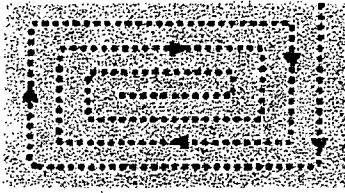
These spreader settings are approximate. The age and condition of spreader, speed of operation and evenness of terrain may require slightly different settings for desired coverage.

If your spreader model does not appear below, please call toll-free 800-xxx-xxxx, 8 A.M. to 5 P.M. EDT, Monday to Friday for additional model settings.

Alternate Spreader Settings:

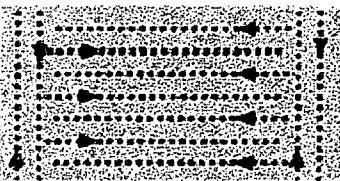
**Suggested Spreader Settings**

These spreader settings are approximate. The age and condition of spreader, speed of operation and evenness of terrain may require slightly different settings for desired coverage.



Apply in a single pass at a rate of 3.6 lbs. per 1,000 sq. ft. Start on the outside border and apply in a circular path working toward the center. Overlap the coverage slightly, and shut off spreader before making hard turns.

Broadcast Spreaders	Setting
Agri-Fab® Rotary	4
Cyclone® Rotary	3 1/2
Earthway® Rotary	14
Greenview® Jet-Spreader® SS1	14
Lesco® Rotary (dial A-S) (number dial)	H/14
Red Devil® Rotary (1-20)	5
Republic® Rotary	4
Scotts® EasyGreen®	23
Scotts® EdgeGuard®	4 1/2
Scotts® SpeedyGreen® 2000, 3000	4 1/2
Sears® Craftsman Rotary	4
Sta-Green® Rotary (1-10)	2 1/2
True Temper® Rotary	3 1/2
Vigoro® Rotary (1-10)	2 1/2



Apply in a single pass at a rate of 3.6 lbs. per 1,000 sq. ft. Start on the outside border and apply in a rectangular path working back and forth across the length of the lawn. Overlap the coverage slightly, and shut off spreader before making hard turns.

Drop Spreaders	Setting
Agri-Fab® Drop	4
Greenview® Drop-Spreader® XP1	16
Red Devil® Drop (1-20)	9
Republic® Drop	5
Scotts® Drop AccuGreen (2-18)	7
Scotts® Drop FF1 (2-18)	5
Sta-Green® Drop (1-5)	3 1/2



If your spreader model does not appear above, go to our website at [www.preen.com](http://www.preen.com), or call toll-free (800) 233-1067, 8 A.M. - 5 P.M. EDT, Monday - Friday, for additional model settings.

[Note: Additional spreader models and settings may be added or substituted by the supplemental registrant provided they deliver the labeled rate of product.]

[Note: Spreader settings may be varied by the supplemental registrant as different grades of fertilizer are used, provided they deliver the labeled rate of pesticide.]

**STORAGE AND DISPOSAL**

Do not contaminate water, food, or feed by storage or disposal.

**PESTICIDE STORAGE:** Keep in original container in a cool, dry area, away from extreme heat and direct sunlight. Do not store near food feed, seeds or other pesticides.

**PESTICIDE DISPOSAL:** Pesticide wastes are toxic. Improper disposal of excess pesticide, spray mixture, or rinsate is a violation of Federal Law. If these wastes cannot be disposed of by use according to label instructions, contact your State Pesticide or Environmental Control Agency, or the Hazardous Waste representative at the nearest EPA Regional Office for guidance.

**CONTAINER DISPOSAL:** Paper and plastic bags: Completely empty bag into application equipment. Then dispose of empty bag in a sanitary landfill or by incineration, or, if allowed by State and local authorities, by burning. If burned, stay out of smoke.

## **WARRANTY**

The manufacturer warrants that this product conforms to its chemical description and is reasonably fit for the purpose stated on the label when used in accordance with directions under normal conditions of use, but neither this warranty nor any other warranty of merchantability or fitness for a particular purpose, expressed or implied, extends to the use of this product contrary to label instructions, or under abnormal conditions not reasonably foreseeable to manufacturer, and buyer assumes the risk of any such use.

## **INHERENT RISKS OF USE**

It is impossible to eliminate all risks associated with use of this product. Plant injury, lack of performance or other unintended consequences may result because of such factors as use of the product contrary to label instructions (including conditions noted on this label, such as unfavorable temperature, soil conditions, etc.), abnormal conditions (such as excessive rainfall, drought, tornadoes, hurricanes), presence of other materials, the manner of application, or other factors, all of which are beyond the control of seller. All such risks shall be assumed by buyer.

## **LIMITATION OF REMEDIES**

The exclusive remedy for losses or damages resulting from this product (including claims based on contract, negligence, strict liability, or other legal theories), shall be limited to, at sellers election, one of the following:

1. Refund of purchase price paid by buyer or user for product bought, or
2. Replacement of amount of product used.

Seller shall not be liable for losses or damages resulting from handling or use of this product unless Seller is promptly notified of such loss or damage in writing. In no case shall seller be liable for consequential or incidental damages or losses.

**SUBLABEL 2**  
**Intended for homeowners**

**EH-1401 HERBICIDE**

**EPA Reg. No. 2217-859**

**ACTIVE INGREDIENT:**

2,4-D (CAS 94-75-7).....	0.64%
Mecoprop-p (16484-77-8).....	0.14%
Dicamba (1918-00-9).....	0.06%
Dithiopyr (97886-45-8).....	0.16%
<b>OTHER INGREDIENTS:</b> .....	<b>99.00%</b>
<b>TOTAL</b> .....	<b>100.00%</b>

**THIS PRODUCT CONTAINS:**

- 12.8 lbs. 2,4-dichlorophenoxyacetic acid equivalent per ton.
  - 2.8 lbs. (+)-(R)-2-(2 methyl-4-chlorophenoxy)propionic acid equivalent per ton.
  - 1.2 lbs. 3,6-dichloro-o-anisic acid equivalent per ton.
  - 3.2 lbs. dithiopyr per ton.
- Isomer Specific by AOAC Methods

<b>GUARANTEED FERTILIZER ANALYSIS</b>	
Total Nitrogen (N).....	x.x%
x.x% Ammoniacal Nitrogen	
x.x% Water Insoluble Nitrogen	
x.x% Urea Nitrogen	
x.x% Other Water Soluble Nitrogen	
Available Phosphate (P2O5).....	x.x%
Soluble Potash (K2O).....	x.x%
Iron (Fe).....	x.x%
Nutrient Sources: (Guaranteed analysis and nutrient sources to be supplied based on fertilizer analysis used by manufacturer).	

**KEEP OUT OF REACH OF CHILDREN**

**CAUTION**

**NOTICE:** Read the entire label. Use only according to label directions.

**STOP! READ THE ENTIRE LABEL FIRST. OBSERVE ALL PRECAUTIONS AND FOLLOW DIRECTIONS CAREFULLY.**

# **PRECAUTIONARY STATEMENTS**

## **Hazards to Humans and Domestic Animals**

**CAUTION:** Causes moderate eye irritation. Harmful if absorbed through skin or if swallowed. Avoid contact with skin, eyes or clothing.

## **Personal Protective Equipment**

Some materials that are chemical-resistant to this product are natural rubber. If you want more options, follow the instructions for category A on an EPA chemical-resistance category selection chart.

All loaders, applicators, and other handlers must wear:

- long-sleeved shirt and long pants,
- shoes plus socks.
- chemical- resistant gloves

See engineering controls for additional requirements.

## **User Safety Requirements**

Follow manufacturer's instructions for cleaning/maintaining PPE. If no such instructions for washables exist, use detergent and hot water. Keep and wash PPE separately from other laundry.

Discard clothing and other absorbent material that have been drenched or heavily contaminated with the product's concentrate. Do not reuse them.

### **User Safety Recommendations**

- Users should wash hands before eating, drinking, chewing gum, using tobacco, or using the toilet.
- Users should remove clothing/PPE immediately if pesticide gets inside. Then wash thoroughly and put on clean clothing. If pesticide gets on skin, wash immediately with soap and water.
- Users should remove PPE immediately after handling this product. Wash the outside of gloves before removing. As soon as possible, wash thoroughly and change into clean clothing.

### **First Aid**

<b>If in eyes:</b>	<ul style="list-style-type: none"> <li>• Hold eye open and rinse slowly and gently with water for 15 - 20 minutes.</li> <li>• Remove contact lenses, if present, after the first 5 minutes, then continue rinsing eye.</li> <li>• Call a poison control center or doctor for treatment advice.</li> </ul>
<b>If swallowed:</b>	<ul style="list-style-type: none"> <li>• Call a poison control center or doctor immediately for treatment advice.</li> <li>• Have person sip a glass of water if able to swallow.</li> <li>• Do not induce vomiting unless told to do so by a poison control center or doctor.</li> <li>• Do not give anything by mouth to an unconscious person.</li> </ul>
<b>If on skin or clothing:</b>	<ul style="list-style-type: none"> <li>• Take off contaminated clothing.</li> <li>• Rinse skin immediately with plenty of water for 15 - 20 minutes.</li> <li>• Call a poison control center or doctor for treatment advice.</li> </ul>
<b>If inhaled:</b>	<ul style="list-style-type: none"> <li>• Move person to fresh air.</li> <li>• If person is not breathing, call 911 or an ambulance, then give artificial respiration, preferably by mouth-to-mouth, if possible.</li> <li>• Call a poison control center or doctor for treatment advice.</li> </ul>

Have the product container or label with you when calling a poison control center or doctor or going for treatment. For additional information in case of emergency, call toll free 1-877-800-5556.

**Environmental Hazards**

This pesticide is toxic to fish and aquatic invertebrates and may adversely affect non-target plants. Do not apply directly to water. Do not contaminate water when disposing of equipment washwaters or rinsate.

This chemical has properties and characteristics associated with chemicals detected in groundwater. The use of this chemical in areas where soils are permeable, particularly where the water table is shallow, may result in groundwater contamination. Application around a cistern or well may result in contamination of drinking water or groundwater.

**DIRECTIONS FOR USE**

It is a violation of Federal law to use this product in a manner inconsistent with its labeling.

**General Precautions and Restrictions:**

Do not apply this product in a way that will contact any person or pet, either directly or through drift. Keep people and pets out of the area during application. Do not allow people or pets to enter the treated area until dusts have settled.

If incorporation is accomplished by watering- in, do not enter or allow entry to the treated areas (except those involved in watering) until the watering-in is complete and the surface is dry.

Read all precautions and directions for use carefully before applying this product.

Not for use on turf being grown for sale or other commercial use as sod, or for commercial seed or for research purposes.

**GENERAL INFORMATION**

EH-1401 Herbicide will control all your lawn's weeds in one application. EH-1401 Herbicide will kill over 200 lawn weeds commonly found in home lawns including dandelion, chickweed, thistle and clover, and will prevent crabgrass and other undesirable annual grasses. EH-1401 Herbicide also contains a long-lasting, timed release fertilizer that has all the nutrients your lawn needs for 2 to 3 months, depending on grass variety.

**EH-1401 Herbicide is recommended for the following established turf species:**

**Established Cool Season Turfgrasses**—Kentucky bluegrass, perennial ryegrass, fine and tall fescues.

**Established Warm Season Turfgrasses**—Bahagrass, bermudagrass, buffalograss, centipedegrass, zoysiagrass, St. Augustinegrass (except 'Floritam').

Do not use this product on seedling buffalograss in the spring of the first year of establishment until the turfgrass is fully green and has established new roots.

Do not use EH-1401 Herbicide on colonial bentgrass, dichondra, carpetgrass, or 'Floritam' St. Augustinegrass.

If the lawn has been seeded recently, wait until after the third mowing before using this product. Do not seed, overseed or sprig the treated area for 10 weeks after application.

**GENERAL USE PRECAUTIONS AND RESTRICTIONS**

Use of EH-1401 Herbicide on lawns and ornamental turfgrasses that are not well established, or have been weakened by stress due to mechanical operations, pests, excessive temperatures, or lack of moisture may increase the chances for turfgrass injury. Allow turfgrass weakened by these stresses to recover before application of this product.

Do not use this product where desirable clovers are present or spread (apply) the granules onto flowers, vegetables or ornamental shrubbery. Do not spread over exposed roots of trees and ornamentals. Do not

exceed specified dosage for any area; be particularly careful within dripline of trees and other ornamental species.

Do not use clippings from treated areas for mulching, vegetables, or fruit trees.

Do not contaminate domestic or irrigation waters.

Do not use this product on or near desirable plants, including within the drip line of the roots of desirable trees and shrubs, since injury may result.

Do not apply directly to or near water, storm drains, gutters, sewers, or drainage ditches. Do not apply within 25 feet of rivers, fish ponds, lakes, streams, reservoirs, marshes, estuaries, bays, and oceans. Do not apply when windy. Apply this product directly to your lawn, and sweep any product landing on the driveway, sidewalk, gutter, or street back onto the treated area. To prevent product run-off, do not over water the treated area(s) to the point of runoff or apply when raining or when rain is expected that day.



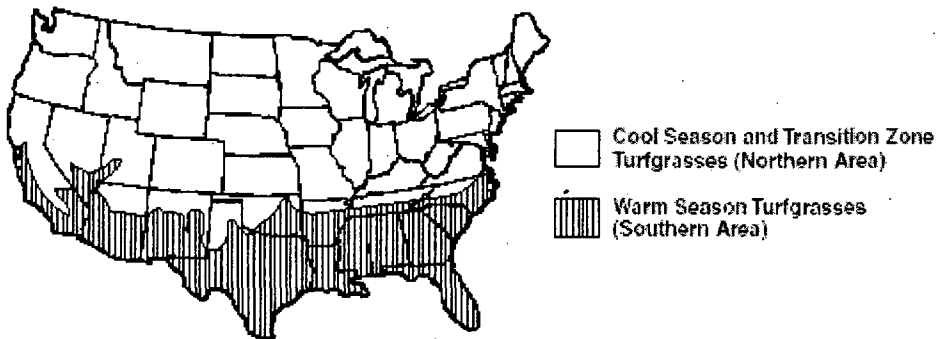
<b>WEEDS CONTROLLED</b>			
<b>When applied as directed, EH-1401 Herbicide will control the following weeds:</b>			
<b>Annual Grass Weeds:</b>			
Annual Bluegrass (Poa annua)	Barnyardgrass	Foxtail (green and yellow)	Perennial Ryegrass
Annual Ryegrass	Crabgrass	Goosegrass	Smutgrass (seedling)
	Crowfootgrass	Kikuyugrass (seedling)	
<b>Established Broadleaf Weeds:</b>			
Annual yellow sweetclover	Clover, white	Musk thistle	Spiny amaranth
Aster	Cockle	Mustard	Spiny cocklebur
Austrian fieldcress	Cocklebur	Narrowleaf plantain	Spiny sowthistle
Bedstraw	Common mullein	Narrowleaf vetch	Spotted catsear
Beggarticks	Creeping jenny	Nettle	Spotted spurge
Betony, Florida	Cudweed	Orange hawkweed	Spurweed
Bindweed, field	Curly dock	Oriental cocklebur	Stinging nettle
Bird vetch	Daisy, English	Oxalis	Strawberry, India mock
Bitter wintercress	Daisy fleabane	Parsley-piert	Tall nettle
Bittercress, hairy	Daisy, oxeeye	Parsnip	Tall vervain
Bitterweed	Dandelion	Pearlwort	Tansy ragwort
Black-eyed Susan	Dichondra	Pennycress	Tansy mustard
Black medic	Dogfennel	Pepperweed	Tanweed
Black mustard	Dollarweed	Pigweed	Thistle
Blackseed plantain	False dandelion	Pineappleweed	Trailing crownvetch
Blessed thistle	Falseflax	Pineywoods bedstraw	Tumble mustard
Bloodflower milkweed	False sunflower	Plains tickseed	Tumble pigweed
Blue lettuce	Fiddleneck	Plantain	Velvetleaf
Blue vervain	Florida pusley	Poison ivy	Venice mallow
Bracted plantain	Frenchweed	Poison oak	Virginia buttonweed
Brassbuttons	Galinsoga	Pokeweed	Virginia creeper
Bristly oxtongue	Goathead	Poorjoe	Virginia pepperweed
Broadleaf dock	Goldenrod	Prairie sunflower	Wavyleaf bullthistle
Broadleaf plantain	Ground ivy	Prickly lettuce	Western clematis
Broomweed	Gumweed	Prickly sida	Western salsify
Buckhorn plantain	Hairy fleabane	Prostrate knotweed	White mustard
Bulbous buttercup	Hawkweed	Prostrate pigweed	Wild aster
Bull thistle	Healall	Prostrate spurge	Wild buckwheat
Bullnettle	Heartleaf drymary	Prostrate vervain	Wild carrot
Burclover	Heath aster	Puncturevine	Wild four-o'clock
Burdock	Hedge bindweed	Purslane, common	Wild garlic
Burning nettle	Hedge mustard	Ragweed	Wild geranium
Burweed	Henbit	Red sorrel	Wild lettuce
Buttercup	Hoary cress	Redroot pigweed	Wild marigold
Buttonweed	Hoary plantain	Redstem filaree	Wild mustard
Canada thistle	Hoary vervain	Rough cinquefoil	Wild onion
Carolina geranium	Horsenettle	Rough fleabane	Wild parsnip
Carpetweed	Jimsonweed	Russian pigweed	Wild radish
Catchweed bedstraw	Knawel	Scarlet pimpernel	Wild rape
Catnip	Knotweed	Scotch thistle	Wild sweet potato
Catsear	Kochia	Sheep sorrel	Wild vetch
Chickweed, common	Lambsquarters	Sheperdspurse	Woodsorrel
Chickweed, mouseear	Lespedeza	Slender plantain	Woolly croton
Chicory	Mallow	Smallflower galinsoga	Woolly morningglory
Cinquefoil	Matchweed	Smooth dock	Woolly plantain
Clover, crimson	Mexicanweed	Smooth pigweed	Wormseed
Clover, hop	Milk vetch	Sorrel	Yarrow
Clover, red	Morningglory	Sowthistle	Yellow rocket
Clover, strawberry	Mouseear hawkweed	Spanishneedles	Yellowflower pepperweed
Clover, sweet	Mugwort	Speedwell	and other broadleaf weeds

### WHEN TO APPLY

EH-1401 Herbicide can be used either in the spring or fall. EH-1401 Herbicide should be used when the grass and weeds are actively growing and the soil is moist. Do not apply under drought conditions.

In the spring, the ideal time to apply EH-1401 Herbicide is after the forsythia has bloomed or when the first dandelion flowers appear. In southern areas (see map), make a second application of EH-1401 Herbicide in 6-8 weeks for best weed and crabgrass control and for full season fertilization.

In the fall, apply EH-1401 Herbicide when the weather cools and both the grass and weeds are actively growing, generally around Labor Day.



### HOW TO APPLY

This product needs to stick to the leaves of broadleaf weeds and should be applied when the grass is wet from dew or rain; poor results will occur if it is applied to dry lawns. The lawn should not be watered or disturbed for 24 hours after application. Delay mowing for 3 days after application.

Apply this product when the wind is calm. Do not apply this product onto desirable plants or shrubs as damage may result. If the product gets onto other plants immediately brush or wash it off the foliage.

Use a drop or rotary spreader designed to apply granular fertilizers. Avoid skips or excessive overlaps as poor weed control or turfgrass injury may result.

### HOW MUCH TO USE

Apply 3.6 pounds of product per 1,000 sq. ft. of turfgrass.

**In New York State:** Do not exceed one application at the recommended rate of 3.6 lbs. of product per 1,000 sq.ft. (0.25 lb. active ingredient of dithiopyr per acre).

**Other States:** Do not apply more than 3.6 pounds of product per 1000 square feet of turfgrass per application. If necessary, a second application may be made no sooner than 30 days after the first. Do not apply more than 7.2 pounds of product per 1000 square feet per year. [note to reviewer: the following information may be omitted from the final printed label: 3.6 pounds of this product contains 1.0 lbs 2,4-D (ae), 0.22 lbs mecoprop-p (ae), 0.09 lbs dicamba (ae), and 0.25 lbs dithiopyr.]

### CALIBRATION INSTRUCTIONS

- For best results, apply this product evenly and uniformly avoiding streaking, skips or overlaps.
- For 3.6 pounds of product per 1,000 square feet of turfgrass: Check your spreader on 275 square feet and adjust to apply at the rate of 1 pound of product per 275 square feet.
- Check equipment frequently to verify calibration

**Drop Spreader Settings:**

Apply in a single pass at a rate of approximately 3.6 lbs per 1,000 sq. ft. Start on the outside border and apply in a rectangular path working toward the center. Overlap the coverage slightly, and shut off the spreader before making hard turns.

Drop Spreader	Setting
Greenview® Drop Spred® XP1	16
Greenview® Drop Spred® III	5
Agri-Fab® Drop	4
Red Devil Drop	9
Republic Drop	5
Scotts Drop	5

**Broadcast Spreader Settings:**

Apply in a single pass at a rate of approximately 3.6 lbs. per 1,000 sq. ft. Start on the outside border and apply in a circular path working toward the center. A little overlap coverage is desirable.

Broadcast Spreader	Setting
Greenview® Jet-Spred® SS1	14
Greenview® Jet-Spred® III	4.5
Agri-Fab® Rotary	4
Cyclone Rotary	3.5
Earthway Rotary	14
Lesco Rotary	H
Red Devil Rotary (1-20)	8
Republic Rotary	4
Sears Craftsman Rotary	4.5
Scotts Speedy Green®	5

To calibrate your spreader: 1 lb of material should cover approximately 275 sq. ft.

If your spreader model is not listed, go to our website at [www.lebsea.com](http://www.lebsea.com), or call toll-free 800-233-0628, 8 A.M. to 5P.M. Monday to Friday, for additional model settings.

**SUGGESTED SPREADER SETTINGS:**

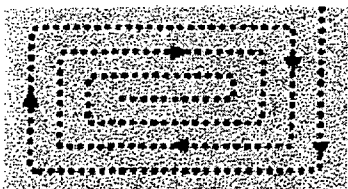
These spreader settings are approximate. The age and condition of spreader, speed of operation and evenness of terrain may require slightly different settings for desired coverage.

If your spreader model does not appear below, please call toll-free 800-xxx-xxxx, 8 A.M. to 5 P.M. EDT, Monday to Friday for additional model settings.

Alternate Spreader Settings:

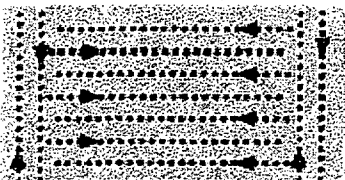
**Suggested Spreader Settings**

These spreader settings are approximate. The age and condition of spreader, speed of operation and evenness of terrain may require slightly different settings for desired coverage



Apply in a single pass at a rate of 3.6 lbs. per 1,000 sq. ft. Start on the outside border and apply in a circular path working toward the center. Overlap the coverage slightly, and shut off spreader before making hard turns.

Broadcast Spreaders	Setting
Agri-Fab® Rotary	4
Cyclone® Rotary	3½
Earthway® Rotary	14
Greenview® Jet-Spreader® SS1	14
Lesco® Rotary (dial A-S)(number dial)	H/14
Red Devil® Rotary (1-20)	5
Republic® Rotary	4
Scotts® EasyGreen®	23
Scotts® EdgeGuard®	4½
Scotts® SpeedyGreen® 2000, 3000	4½
Sears® Craftsman Rotary	4
Sta-Green® Rotary (1-10)	2½
True Temper® Rotary	3½
Vigoro® Rotary (1-10)	2½



Apply in a single pass at a rate of 3.6 lbs. per 1,000 sq. ft. Start on the outside border and apply in a rectangular path working back and forth across the length of the lawn. Overlap the coverage slightly, and shut off spreader before making hard turns.

Drop Spreaders	Setting
Agri-Fab® Drop	4
Greenview® Drop-Spreader® XP1	16
Red Devil® Drop (1-20)	9
Republic® Drop	5
Scotts® Drop AccuGreen (2-18)	7
Scotts® Drop PF1 (2-18)	5
Sta-Green® Drop (1-5)	3½



If your spreader model does not appear above, go to our website at [www.preen.com](http://www.preen.com), or call toll-free (800) 233-1067, 8 A.M. - 5 P.M. EDT, Monday - Friday, for additional model settings.

[Note: Additional spreader models and settings may be added or substituted by the supplemental registrant provided they deliver the labeled rate of product.]

[Note: Spreader settings may be varied by the supplemental registrant as different grades of fertilizer are used, provided they deliver the labeled rate of pesticide.]

**STORAGE AND DISPOSAL**

**PESTICIDE STORAGE:** Keep in original container in a cool, dry area, away from extreme heat and direct sunlight. Do not store near food feed, seeds or other pesticides.

**PESTICIDE DISPOSAL:** If empty: Do not reuse this container. Place in trash or offer for recycling if available. If partly filled: Call your local solid waste agency for disposal instructions. Never place unused product down any indoor or outdoor drain.

**WARRANTY**

The manufacturer warrants that this product conforms to its chemical description and is reasonably fit for the purpose stated on the label when used in accordance with directions under normal conditions of use, but neither this warranty nor any other warranty of merchantability or fitness for a particular purpose,

expressed or implied, extends to the use of this product contrary to label instructions, or under abnormal conditions not reasonably foreseeable to manufacturer, and buyer assumes the risk of any such use.

**INHERENT RISKS OF USE**

It is impossible to eliminate all risks associated with use of this product. Plant injury, lack of performance or other unintended consequences may result because of such factors as use of the product contrary to label instructions (including conditions noted on this label, such as unfavorable temperature, soil conditions, etc.), abnormal conditions (such as excessive rainfall, drought, tornadoes, hurricanes), presence of other materials, the manner of application, or other factors, all of which are beyond the control of seller. All such risks shall be assumed by buyer.

**LIMITATION OF REMEDIES**

The exclusive remedy for losses or damages resulting from this product (including claims based on contract, negligence, strict liability, or other legal theories), shall be limited to, at sellers election, one of the following:

- 1. Refund of purchase price paid by buyer or user for product bought, or
- 2. Replacement of amount of product used.

Seller shall not be liable for losses or damages resulting from handling or use of this product unless seller is promptly notified of such loss or damage in writing. In no case shall seller be liable for consequential or incidental damages or losses.

**APPENDIX SUBLABEL 1**

**1. Alternate optional maximum rate statement**

**Other States:** The maximum broadcast application rate is 5.0 pounds of product per 1,000 sq.ft. per application (1.39 lb 2,4-D ae, 0.30 lb MCPP-p ae, 0.13 lb dicamba ae and 0.35 lb. dithiopyr per acre per application). The maximum number of broadcast applications is limited to 2 per year with a minimum of 30 days between applications. The maximum seasonal rate is 10 pounds of product per 1,000 sq.ft. (2.78 lb 2,4-D ae, 0.60 lb MCPP-p ae and 0.26 lb dicamba ae and 0.70 lb dithiopyr per acre per year).

**APPENDIX SUBLABEL 2**

**1.. Advertising claims that may be presented on the container:**

- Kills Dandelion
- Prevents Crabgrass and Fertilizes
- Weed 'n Feed Plus Crabgrass Preventer
- Fertilize Once for Whole Season—Feeds and greens with slow release fertilizer for up to three months.
- Only one application needed with new nitrogen technologies.
- Eliminates lawn weeds—crabgrass, dandelions, viney weeds, even clover.
- Extended time-release feeding of nitrogen lasts into the summer.
- Guaranteed Satisfaction
- Greenview guarantees you will be satisfied with the performance of this product when used as directed, or your money back. If not satisfied, describe the nature of your problem and simply send proof of purchase to Lebanon Seaboard Corporation, 1600 East Cumberland Street, Lebanon, PA 17042.

- This xxx bag covers up to xx sq. ft. of turfgrass (lawn):

Bag Size, Pounds	Application Rate, Pounds/1,000 Sq.Ft.	Treated Area for This Bag Size, Square Feet	Bag Size, Pounds	Application Rate, Pounds/1,000 Sq.Ft.	Treated Area for This Bag Size, Square Feet
16	3.0	5,300	30	3.0	10,000
	3.5	4,600		3.5	8,600
	4.0	4,000		4.0	7,500
	4.5	3,600		4.5	6,700
	5.0	3,200		5.0	6,000
18	3.0	6,000	40	3.0	13,300
	3.5	5,100		3.5	11,400
	4.0	4,500		4.0	10,000
	4.5	4,000		4.5	8,900
	5.0	3,600		5.0	8,000
20	3.0	6,700	50	3.0	16,700
	3.5	5,700		3.5	14,300
	4.0	5,000		4.0	12,500
	4.5	4,400		4.5	11,000
	5.0	4,000		5.0	10,000

**2. Additional Labeling Requirements for Fertilizers and State Registrations:**

- For paper box board containers, the following statement may appear: This container is constructed from 85% recycled box board.
- If the fertilizer guarantee contains iron, this following statement must appear: This product contains secondary nutrient iron. Iron may stain concrete and should not be applied on dry or water dampened concrete and should be removed from these area promptly after application by sweeping or blowing. Do not wash off with water.
- If the recommended use rate applies less than 1 pound nitrogen per 1,000 sq. ft. per application, the following statement must appear: Supplemental applications of lawn fertilizer are needed to achieve a minimum of 1 pound nitrogen per 1,000 sq. ft.
- For products distributed in the State of Washington, the following statement must appear: Information regarding the contents and levels of metals in this product is available on the Internet at <http://www.xxx.com> . or "http://www.aapfco.org/metals.htm."
- Supplemental applications of lawn fertilizer are needed to achieve a minimum 1 lb. nitrogen per 1,000 sq. ft.

**3. Addition of fertilizer grade, guaranteed analysis and advertising claims:**

GUARANTEED FERTILIZER ANALYSIS 24-2-8	
Total Nitrogen (N).....	24%
2.0% Ammoniacal Nitrogen	
8.5% Water Insoluble Nitrogen*	
4.3% Urea Nitrogen	
9.2% Other Water Soluble Nitrogen*	
Available Phosphate (P2O5).....	2%
Soluble Potash (K2O).....	8%
Total Sulfur (S).....	2.6%
2.6% Combined Sulfur (S)	
Nutrient Sources: Ammonium Phosphate, Ammonium Sulfate, Methylene Ureas, Muriate of Potash.	
Chlorine (Cl) not more than.....	7.0%
*17.7% Slowly Available Nitrogen from Methylene Ureas.	<b>F699</b>
Information regarding the contents and levels of metals in this product is available on the Internet at <a href="http://www.regulatory-info-lebsea.com">http://www.regulatory-info-lebsea.com</a> .	

**WHAT IS SLOW RELEASE NITROGEN?**

Greenview Fairway Formula Fertilizers utilize a unique, slow release nitrogen source developed for professionals.	
<b>METH-EX®</b>	Provides slow, continuous feeding for up to 12 weeks. Initially some nitrogen is released by water to provide early spring green-up. As soil temperatures warm, nitrogen is gradually released through microbial action that minimizes surge growth.
	17.7% Slowly Available Nitrogen/24% Total Nitrogen = 7/10 of the Nitrogen is Slow Release
	<b>0.9 lb. Nitrogen/1,000 sq. ft.</b>

**Fertilizer Grade:** [Guaranteed Analysis will be presented in its entirety on container label/bag].

24-0-6	24-2-8	

- One Product Kills Broadleaf Weeds and Prevents Crabgrass
- 4 Weed Control Products in 1
- Replaces Steps 1 and 2 of a 4 Step Program
- Fertilizes all season—longer than most other leading brands
- In spring apply once when weeds are growing (see back panel on when to apply)
- Good Housekeeping Seal (see attached front bag copy)



- Stops More Weeds In One Application!
- Apply once in Spring when weeds are growing

**4. Alternate optional maximum rate statement**

**Other states:** The maximum broadcast application rate is 3.6 pounds of product per 1,000 sq.ft. per application (1.0 lb 2,4-D ae, 0.22 lb MCPP-p ae, 0.09 lb dicamba ae and 0.25 lb dithiopyr per acre per application). The maximum number of broadcast applications is limited to 2 per year with a minimum of 30 days between applications. The maximum seasonal rate is 7.2 pounds of product per 1,000 sq.ft. (2.0 lb 2,4-D ae , 0.44 lb MCPP-p ae and 0.18 lb dicamba ae and 0.50 lb dithiopyr per acre per year).

## **APPENDIX FOR ALL SUBLABELS**

### **1. Statements which may appear on different label components depending on packaging configuration.**

- See next panel for additional Precautionary Statements and First Aid
- Net Weight: \_\_\_\_\_
- EPA Est. No. \_\_\_\_\_

### **2. Trademark acknowledgements**

- DIMENSION® is a registered trademark of Dow AgroSciences, L.L.C.
- TRIMEC® is a registered trademark of PBI/GORDON CORPORATION.

## **DOCUMENT CONTROL INFORMATION**

**1. Unique Label Identifier:** 002217-00859.20080305.doc

**2. Previous Version:** AP062707

**3. Reason for Issue:** Various changes pertaining to re-registration. Re-format label.