

2217-675

08/10/2004

1/18
NOTIFICATION

Please read instructions on reverse before completing form.

Form Approved. OMB No. 2070-0060. Approval Expires 2-28-95

	United States Environmental Protection Agency Washington, DC 20460	<input type="checkbox"/> Registration	OPP Identifier Number
		<input type="checkbox"/> Amendment	
		<input checked="" type="checkbox"/> Other	

Application for Pesticide - Section I

1. Company/Product Number 2217-675	2. EPA Product Manager James A. Tompkins	3. Proposed Classification <input checked="" type="checkbox"/> None <input type="checkbox"/> Restricted
4. Company/Product (Name) Norosac® 4G Dichlobenil Herbicide	PM# Product Manager, Team 25	
5. Name and Address of Applicant (Include ZIP Code) PBI/Gordon Corporation Post Office Box 014090 Kansas City, Missouri 64101 <input type="checkbox"/> Check if this is a new address	6. Expedited Review. In accordance with FIFRA Section 3(c)(3) (b)(i), my product is similar or identical in composition and labeling to: EPA Reg. No. _____ Product Name _____	

Section - II

<input type="checkbox"/> Amendment - Explain below.	<input type="checkbox"/> Final printed labels in response to Agency letter dated _____	NOTIFICATION AUG 10 2004
<input type="checkbox"/> Resubmission in response to Agency letter dated _____	<input type="checkbox"/> "Me Too" Application.	
<input checked="" type="checkbox"/> Notification - Explain below.	<input type="checkbox"/> Other - Explain below.	

Explanation: Use additional page(s) if necessary. (For section I and Section II.)

NOTIFICATION: Re-Submission of our Notification dated November 21, 2003: Additional Package Size, Container Type

- We ask to add an additional package size. We are adding a Four (4) Pound plastic shaker container. This will necessitate an alternate version of the Storage and Disposal statement Please refer to page 4 of the enclosed labeling.
- Addition of two advertising claims—these are presented as highlighted text on page 11 of the enclosed labeling.

This notification is consistent with the provisions of PR Notice 98-10 and EPA regulations at 40 CFR 152.46, and no other changes have been made to the labeling or Confidential Statement of Formula of this product. I understand that it is a violation of 18 U.S.C Sec. 1001 to willfully make any false statement to the EPA. I further understand that if this notification is not consistent with the terms of PR Notice 98-10 and 40 CFR 152.46, this product may be in violation of FIFRA and I may be subject to enforcement action and penalties under Section 12 and 14 of FIFRA.

Section - III

1. Material This Product Will Be Packaged In:				2. Type of Container	
Child-Resistant Packaging <input type="checkbox"/> Yes* <input checked="" type="checkbox"/> No	Unit Packaging <input type="checkbox"/> Yes <input checked="" type="checkbox"/> No	Water Soluble Packaging <input type="checkbox"/> Yes <input checked="" type="checkbox"/> No		<input type="checkbox"/> Metal	<input checked="" type="checkbox"/> Plastic
* Certification must be submitted		If "Yes" Unit Packaging wgt.	No. per container	<input type="checkbox"/> Glass	<input checked="" type="checkbox"/> Paper
		If "Yes" Package wgt.	No. per container	<input type="checkbox"/> Other (Specify) _____	
3. Location of Net Contents Information <input checked="" type="checkbox"/> Label <input checked="" type="checkbox"/> Container		4. Size(s) Retail Container 4, 25, or 50 pounds		5. Location of Label Directions <input checked="" type="checkbox"/> On Label <input type="checkbox"/> On Labeling accompanying product	
6. Manner in Which Label is Affixed to Product		<input checked="" type="checkbox"/> Lithograph <input type="checkbox"/> Other _____ <input checked="" type="checkbox"/> Paper glued <input type="checkbox"/> Stenciled			

Section - IV

1. Contact Point (Complete items directly below for identification of individual to be contacted, if necessary, to process this application.)		
Name James L. Kunstman, Ph.D.	Title Director of Regulatory Services	Telephone No. (Include Area Code) 816-460-62927
Certification I certify that the statements I have made on this form and all attachments thereto are true, accurate and complete. I acknowledge that any knowingly false or misleading statement may be punishable by fine or imprisonment or both under applicable law.		6. Data Application Received (Stamped)
2. Signature 	3. Title Director of Regulatory Services	
4. Typed Name James L. Kunstman, Ph.D.	5. Date July 16, 2004	

ACME[®] AGRICULTURAL PRODUCTS NOROSAC[®] 4G DICHLOBENIL HERBICIDE

A Selective Herbicide For Control Of Crabgrass, Foxtail, Shepherdspurse, Horsetail, Pigweed, Quackgrass, Canada Thistle, Leafy Spurge, Fescue, and Certain Other Annual and Perennial Weeds.

ACTIVE INGREDIENT:	
Dichlobenil: 2,6-dichlorobenzonitrile.....	4.0%
INERT INGREDIENTS:.....	96.0%
TOTAL	100.0%

ACME[®] is a registered trademark of PBI/Gordon Corporation.
NOROSAC[®] is a registered trademark of PBI/Gordon Corporation.

KEEP OUT OF REACH OF CHILDREN

CAUTION

See back of bag for additional Precautionary Statements and First Aid.

NET WEIGHT: 25 or 50 POUNDS

504/ AP071604
EPA REG. NO. 2217-675
EPA EST. NO. 2217-KS-2
MANUFACTURED BY:

An Employee-Owned Company
1217 West 12th Street
Kansas City, Missouri 64101
Telephone: 1-800-821-7925



READ THE ENTIRE LABEL FIRST. OBSERVE ALL PRECAUTIONS AND FOLLOW DIRECTIONS CAREFULLY.

PRECAUTIONARY STATEMENTS

Hazards to Humans & Domestic Animals

CAUTION: Harmful if swallowed or absorbed through skin or inhaled. Avoid contact with eyes, skin or clothing. Avoid breathing dust.

Personal Protective Equipment (PPE):

Some materials that are chemical resistant to this product are made of any waterproof material. If you want more options, follow the instructions for category A on an EPA chemical-resistant category selection chart.

Applicators and handlers must wear:

- Long-sleeved shirt and long pants
- Socks and shoes
- Chemical resistant gloves

Follow manufacturer's instructions for cleaning/maintaining PPE. If no such instructions for washables, use detergent and hot water. Keep and wash PPE separately from other laundry.

User Safety Recommendations:	
<i>Users should:</i>	
◆	Wash hands before eating, drinking, chewing gum, using tobacco or using the toilet
◆	Remove clothing immediately if pesticide gets inside. Then wash thoroughly and put on clean clothing.
◆	Remove PPE immediately after handling this product. Wash the outside of gloves before removing. As soon as possible, wash thoroughly and change into clean clothing.

First Aid

If in eyes:	<ul style="list-style-type: none"> • Hold eye open and rinse slowly and gently with water for 15-20 minutes. • Remove contact lenses, if present, after the first 5 minutes, then continue rinsing eye. • Call a poison control center or doctor for treatment advice.
If swallowed:	<ul style="list-style-type: none"> • Call a poison control center or doctor immediately for treatment advice. • Have person sip a glass of water if able to swallow. • Do not induce vomiting unless told to do so by the poison control center or doctor. • Do not give anything by mouth to an unconscious person.
If on skin or clothing:	<ul style="list-style-type: none"> • Take off contaminated clothing. • Rinse skin immediately with plenty of water for 15 - 20 minutes. • Call a poison control center or doctor for treatment advice.
If inhaled:	<ul style="list-style-type: none"> • Move person to fresh air. • If person is not breathing, call 911 or an ambulance, then give artificial respiration, preferably mouth-to-mouth if possible. • Call a poison control center or doctor for further treatment advice.
Have the product container or label with you when calling a poison control center or doctor or going for treatment. You may also contact 1-877-800-5556 for emergency medical treatment advice.	

ENVIRONMENTAL HAZARDS:

Cover, collect, or incorporate granules spilled on the soil surface. For terrestrial uses, do not apply directly to water, or to areas where surface water is present, or to intertidal areas below the mean high water mark. Do not contaminate water when disposing of equipment washwater.

GROUNDWATER ADVISORY:

This chemical has properties and characteristics associated with chemicals detected in groundwater. The use of this chemical in areas where soils are permeable, particularly where the water table is shallow may result in groundwater contamination.

DIRECTIONS FOR USE

It is a violation of Federal law to use this product in a manner inconsistent with its labeling.

Do not apply this product in a way that will contact workers or other persons, either directly or through drift. Only protected handlers may be in the area during application.

For any requirements specific to your State or Tribe, consult the agency responsible for pesticide regulation.

AGRICULTURAL USE REQUIREMENTS

Use this product only in accordance with its labeling and with the Worker Protection Standard, 40 CFR part 170.

This standard contains requirements for the protection of agricultural workers on farms, forests, nurseries, and greenhouses, and handlers of agricultural pesticides. It contains requirements for training, decontamination, notification, and emergency assistance. It also contains specific instructions and exceptions pertaining to the statements on this label about personal protective equipment and restricted-entry interval. The requirements in this box only apply to uses of this product that are covered by the Worker Protection Standard.

Do not enter or allow worker entry into treated areas during the restricted-entry interval (REI) of 12 hours.

Exception: If the product is soil-injected or soil incorporated, the Worker Protection Standard, under certain circumstances, allows workers to enter the treated area if there will be no contact with anything that has been treated.

For early entry to treated areas that is permitted under the Worker Protection Standard and that involves contact with anything that has been treated, such as plants, soil, or water, wear: coveralls, chemical resistant gloves made of any waterproof material, and shoes plus socks.

(FOR BAGS)

STORAGE & DISPOSAL

Do not contaminate water, food, or feed by storage or disposal.

PESTICIDE STORAGE: Store in original bag in a locked storage area inaccessible to children or pets. Storage area should be cool and dry. Keep bag tightly closed. Reseal bag by rolling down top to product level and taping or clipping. Do not store near seeds, bulbs, or in greenhouses.

PESTICIDE DISPOSAL: Wastes resulting from the use of this product may be disposed of at an approved waste disposal facility.

CONTAINER DISPOSAL: Completely empty bag into application equipment. Then dispose of empty bag in a sanitary landfill, or by incineration, or if allowed by State and local authorities by burning. If burned stay out of smoke.

(FOR SPRED-RITE® SPREADER)**STORAGE & DISPOSAL**

Do not contaminate water, food or feed by storage or disposal.

PESTICIDE STORAGE: Store in original container in a locked storage area inaccessible to children or pets. Storage area should be cool and dry. Keep container tightly closed using disc seal inside cap. Do not store near seeds, bulbs, or in greenhouse.

PESTICIDE DISPOSAL: Wastes resulting from the use of this product may be disposed of at an approved waste disposal facility.

CONTAINER DISPOSAL: Refill the Spred-Rite® applicator with Norosac® 4G granules available in 5 lb. bags. Do not use this applicator for any other purpose. When applicator becomes inoperable or is no longer wanted rinse thoroughly and place in trash collection.

(FOR FOUR POUND SHAKER CONTAINER)**STORAGE & DISPOSAL**

Do not contaminate water, food or feed by storage or disposal.

PESTICIDE STORAGE: Store in original container in a locked storage area inaccessible to children or pets. Storage area should be cool and dry. Keep container tightly closed. Do not store near seeds, bulbs, or in greenhouse.

PESTICIDE DISPOSAL: Wastes resulting from the use of this product may be disposed of at an approved waste disposal facility.

CONTAINER DISPOSAL: Triple rinse (or equivalent), then offer for recycling or reconditioning, or puncture and dispose of in a sanitary landfill, or by incineration, or, if allowed by state and local authorities, by burning. If burned, stay out of smoke.

PERENNIAL WEED CONTROL:

This product is recommended for control of certain perennial weeds such as Artemisia, Bluegrass, Canada Thistle, Curly Dock, Dandelion, Dogfennel, False Dandelion (Catsear), Fescue, Horsetail, Leafy Spurge, Natalgrass, Orchardgrass, Plantain, Quackgrass, Russian Knapweed, Timothy, Wild Artichoke, Wild Aster, Yellow Rocket, and Yellow Woodsorrel in established woody ornamentals and fruit and for control in noncrop areas such as along roads and highways, parks, around buildings, hedges and trees, play and sports grounds, along fences, railroad and utility right-of-ways and installations.

SOIL SURFACE TREATMENT:

Spring and fall applications are effective. Apply as soil surface treatment from late fall through early spring. For best results, applications in the states of Maine, Vermont, New Hampshire, Massachusetts, Rhode Island, Connecticut, New York, Michigan, Wisconsin, Minnesota, North Dakota, South Dakota and Montana should be made in early spring after soil has thawed. Do not apply to frozen soil or over the top of the snow. Old weed growth should not be removed before application. Do not make surface applications to areas which have been cultivated during the fall or summer prior to application.

SOIL TREATMENT WITH INCORPORATION:

If practical, shallow incorporation may increase the effectiveness of weed control. Apply and incorporate immediately after application in late fall or very early spring.

TREATMENTS ON GROUND (SOIL OR GRAVEL) IN LINERS IN WHICH ORNAMENTAL STOCK WILL BE PLACED:

Thoroughly incorporate the granules into the soil (or other target surface) through watering-in. Once the application has been properly incorporated through watering-in and the treated surface is dry, the WPS permits workers to enter the treated area during the restricted-entry interval without personal protective equipment or any other restriction if they are performing tasks that do not involve contact with the soil subsurface.

ANNUAL AND BIENNIAL WEED CONTROL:

This product is recommended for control of annual and biennial grass and broadleaf weeds such as: Annual Bluegrass (*Poa annua*), Bull Thistle, Camphorweed, Carpetweed, Chickweed, Citronmelon, Coffeeweed, Crabgrass, Cudweed, Evening Primrose, Fiddleneck, Florida Purslane (Pusley), Foxtail, Groundsel, Henbit, Jerusalem Oak Goosefoot, Knotweed, Lambsquarters, Maypops, Climbing Milkweed, Miner's Lettuce, Old Witchgrass, Pepperweed, Pineappleweed, Purslane, Ragweed, Deadnettle, Redroot Pigweed, Rosarypea, Russian Thistle, Shepherdspurse, Smartweed, Spanishneedles, Spurge, Teaweed, Texas Panicum, Wild Barley, Wild Carrot, Wild Mustard, and Wild Radish.

Apply in early spring before seeds of annual weeds germinate or after cultivation has removed the growing weeds. Distribute granules uniformly over the soil surface. If treatment is followed by application of ½ to 1 inch of water by overhead irrigation, the lower rates are recommended. Shallow incorporation immediately after application is recommended in southern states. In other areas, shallow incorporation or sprinkler irrigation is suggested when applications are made during periods of high temperatures.

FRUIT IN ORCHARDS AND NURSERIES:

Do not plant rotational crops, on which dichlobenil is not registered, in treated soil within one (1) year after application. Do not allow livestock to graze treated orchards. This product may be used on the following crops:

- A. Apple, Blueberry, Cherry, Grape, Pear:** May be used on bearing, non-bearing and nursery stock. Do not apply until 4 weeks after transplanting. Do not make application within one month of harvest on stone fruits. Apply 100 to 150 pounds of product per acre for annual weed control based on area actually treated. For control of perennial weeds apply 150 pounds of product per acre. Follow General Directions for Use.
- B. Blackberry and Raspberry:** For control of annual weeds follow General Directions for Use, except use only on established plantings and do not apply more than 100 pounds of product per acre. Do not apply during new shoot emergence.

WOODY ORNAMENTALS (ESTABLISHED AND NURSERY STOCK):

For control of annual weeds this product may be used on the following plants. Apply 100 to 150 pounds of product per acre, based on area actually treated. Do not apply until 4 weeks after transplanting. Follow Directions for Use above. For control of perennial weeds listed, apply 150 to 200 pounds of product per acre. Do not apply more than 150 pounds of product per acre on Azalea, Boxwood, Euonymus, Forsythia, Heather, Holly, Ivy, Lilac, Leucothoe. Do not apply more than 150 pounds of product per acre on plantings less than one year old. Follow Directions for Use listed above.

Do not apply to containers in which nursery stock is grown.

Amur corktree	Euonymus	Mountain ash
Arborvitae	Filbert (Ornamental)	Nandina
Ash	Flowering almond	Oak
Azalea ¹	Flowering quince	Osmanthus (Holly-olive)
Barberry	Forsythia	Paxistima
Beauty bush	Gardenia	Pecan (Ornamental)
Birch	Goldenraintree	Photinia
Boxelder	Hackberry	Pine*
Boxwood	Heather	Pittosporum
Camellia	Holly (<i>Ilex</i> spp.) ²	Podocarpus
Caragana	Honeylocust	Poplar
<i>Cleyera (Cleyera japonica)</i>	Honeysuckle	Privet
Cotoneaster	Juniper	Pyracantha
Cottonwood	Kinnikinnick	Rhododendron
Crabapple (Ornamental)	Laurel	Rockrose
Deutzia	Leucothoe	Rose
Dogwood	Lilac	Russian olive
Eastern red cedar	Linden	Spirea
Elm	Locust	Squawcarpet
Elwood false cypress*	Magnolia	Willow*
English ivy (<i>Hedera helix</i>)	Maple*	Weigela
English walnut (Ornamental)	Mock orange	Yew (<i>Taxus</i>)
¹ Kurume, Mollis, Hardy hybrid types and hardy native species only.		
² Except <i>I. crenata</i> , <i>I. rotunda</i> , <i>I. vomitoria</i>		
*Not for use on these species within the State of California. Pine species are sensitive to injury from Norosac® 4G Dichlobenil Herbicide if applied within two years after transplanting.		

USE PRECAUTIONS FOR WOODY ORNAMENTALS (ESTABLISHED AND NURSERY STOCK):

- ◆ Do not use in seedbeds, transplant or cutting beds or greenhouses. Do not apply until 6 months after rooting of cuttings in the field or after planting rooted cuttings.
- ◆ Do not apply to areas on slopes above lawns or susceptible crops as runoff from treated area could cause injury.
- ◆ Do not apply on fruit stock within 3 months prior to or following grafting or budding of root stocks or planting of new grafts.
- ◆ Do not apply more than the maximum recommended amount per growing season. Do not use on "St. Lucie fine sand", "Arzell fine sand" or other light sandy soil.
- ◆ Do not graze livestock in treated areas.
- ◆ Avoid applications which allow Norosac® 4G Dichlobenil Herbicide to lodge in the foliage, particularly in conifer species, such as pines, yews, etc.
- ◆ Do not allow Norosac® 4G Dichlobenil Herbicide to accumulate and be in contact with trunk at or below soil line.
- ◆ Do not apply this product by backpack applicator.

WEED CONTROL IN CRANBERRIES:

Control of perennial, annual, and biennial broadleaf and grass weeds (including rushes and sedges) in cranberries can be obtained by use of this product. The following weeds are controlled: Sensitive Fern, Bracken Fern, Royal Fern, Hair Cap Moss, Common Horsetail, Water Horsetail (pipes), Rush (*Juncus* spp.), Dodder, Bluejoint grass, Rattlesnake grass, (Manna grass), Summer grass, Velvetgrass, Bent grasses, Little Hairgrass, Crabgrass, Rice Cutgrass, Bunch grass, Muskrat grass, Nutsedge, Short Wiregrass, Wideleaf grass, Stargrass, Woolgrass, Cotton grass, Needlegrass, Oniongrass, Arrowleaved Tear Thumb, Beggarsticks, Knotweed, Loosestrife, Marsh St. Johnswort, Tideland clover, Ragweed, Sorrel, Wild Strawberry, Aster, Buckbean, Hawkweed, Western *Lilaeopsis*, Marsh Pea, Plantain, Smartweed (Marshpepper, Pennsylvania, Spotted, Swamp and Water).

CRANBERRIES**USE RATE:**

100 pounds of Norosac® 4G Dichlobenil Herbicide per acre. Application should be made in early spring while perennial weeds are still dormant and annual weeds have not started to germinate or in late fall after crop has been harvested. Apply pre-budbreak or postharvest.

Multiple applications may be made as needed. Allow an interval of 3 to 6 weeks between treatments. Do not exceed 100 pounds of product per acre in any twelve month period.

USE PRECAUTIONS FOR CRANBERRIES:

- ◆ Distribute granules uniformly. Avoid over application which may result from overlapping during treatment.
- ◆ Temporary reddening of cranberry plants may occur especially with late spring application or when applied on sandy bogs.
- ◆ Do not use on young beds or newly sanded beds or on bogs prior to or immediately after mowing for vines.
- ◆ Do not apply after cranberry plants start to bloom as yields may be reduced.
- ◆ Use lower rates on bogs with sandy soil or weak vines.

NUTSEdge CONTROL:

To control nutsedge on mineral soils in areas on which containers of nursery stock are to be grown or held and in noncrop areas apply 250 pounds of product per acre and incorporate immediately to a depth of 4 to 6 inches. Seasonal control of annual weeds will also be obtained. Containers of plants listed above may be placed on treated soil immediately. Do not transplant into treated soil.

Non-Agricultural Use Requirements
<p>The requirements in this box apply to uses of this product that are NOT within the scope of the Worker Protection Standard for agricultural pesticides (40 CFR Part 170). The WPS applies when this product is used to produce agricultural plants on farms, forests, nurseries, or greenhouses.</p> <p>Keep unprotected persons out of the treated areas until sprays have dried.</p> <p>For uses on ornamental woody shrubs and vines, ornamental/shade trees, and residential and commercial landscaping: Do not enter or allow others to enter the treated area until granules are thoroughly watered in and the treated soil has dried.</p>

VINYL POOL LINERS:

Nutsedge can penetrate vinyl pool liners used in above ground pools. For control, apply at a rate of 5¾ pounds of product per 1,000 square feet, immediately after the final grading has been achieved. Use a tiller or rake to mix into the top 2 to 4 inches of soil. After pool installation has been completed, twelve to eighteen inches of the perimeter should be cleared of grass and soil treated. It is recommended that the perimeter be treated annually.

SUGGESTED TREATMENT GUIDE

Pool Size	Treatment Needed
18' round	1.5—2.0 pounds
21' round	2.0—2.7 pounds
24' round	2.6—3.4 pounds
27' round	3.3—4.3 pounds
12 x 18' oval	1.0—1.6 pounds
12 x 24' oval	1.2—2.2 pounds
15 x 27' oval	1.8—3.0 pounds
15 x 30' oval	2.0—3.4 pounds
15 x 32' oval	2.2—3.6 pounds
18 x 33' oval	2.7—4.4 pounds

UNDER ASPHALT:

For general weed control under asphalt (in areas such as roadways, parking lots, recreational areas), after final grade is achieved, apply 250 pounds of product per acre (5¾ pounds of product per 1,000 square feet). Treated area should be covered with asphalt as soon as possible. For resurfacing work, existing weeds should be sprayed with a contact herbicide prior to application.

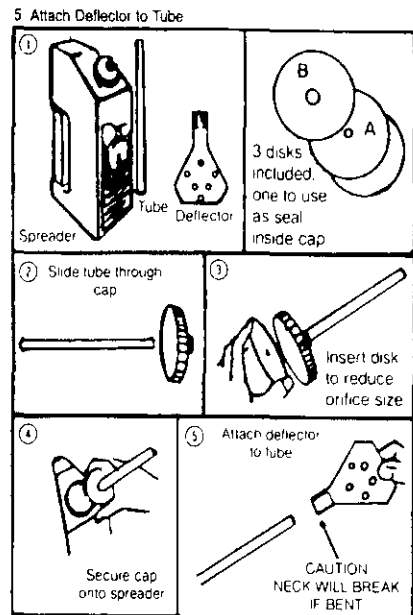
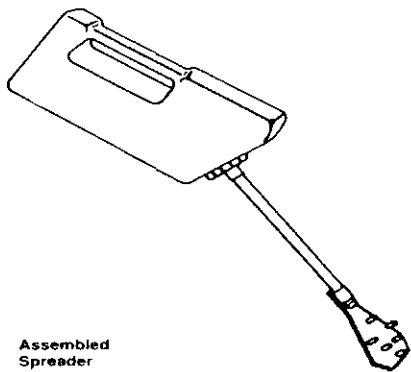
This chemical has properties and characteristics associated with chemicals detected in groundwater. The use of this chemical in areas where soils are permeable, particularly where the water table is shallow may result in groundwater contamination.

- INSTRUCTIONS FOR GRAVITY FLOW APPLICATOR -

HOW TO ASSEMBLE THE SPRED-RITE® GRAVITY-FLOW APPLICATOR

INSTRUCTIONS FOR ASSEMBLY OF SPREADER:

1. Illustration of Spreader, Tube Deflector
2. Illustration of Slide Tube Through Cap
3. Place Disk in Cap
4. Secure Cap onto Spreader
5. Attach Deflector to Tube



- DIRECTIONS FOR USE -

1. To start the flow of granules: Tilt the spreader down until granules flow through the tube and across the deflector.
2. To stop the granule flow: Tilt the spreader back toward the upright position.
3. To adjust the volume of granule flow: Use of the "A" or "B" disk in the cap adjusts the volume of granules that will flow through the tube. The smaller the orifice used the smaller the flow will be. To obtain maximum flow of granules, do not use either orifice disk.

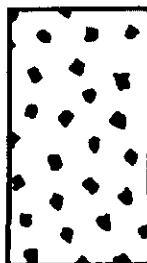
CAUTION: Use without either orifice disk will result in an extremely rapid flow of granules that may cause over application and risk of damage to desirable plantings or result in a waste of the product.

4. To adjust the width of the band of granules: Hold the deflector close to the ground to produce a narrow band. As the deflector is raised, the band applied will widen. The spreader will apply a band of granules 30 to 36 inches wide when the deflector is held about 3 feet above the ground. By turning the deflector sideways, a 2 to 4 inch band will result.

Granules may be applied to cracks and other very narrow areas by removing the deflector head entirely. NOTE: When the spreader is used in this manner, the "A" disk should be used to slow down the flow of the granules.

- 5 Side delivery of granules: The operator can direct the granules out to the side and under hedges, bleachers, guardrails, etc. while walking straight ahead. Hold spreader parallel to the body, but with deflector positioned sideways.
6. The amount of granules applied will depend on the orifice disk used and the speed the person walks while making the application.
7. Refer to the rate diagrams for the pattern of granules for the various recommended rates. These patterns should be duplicated as nearly as possible for best results.

DENSITY OF GRANULAR COVERAGE AT VARIOUS RATES



LIMITED WARRANTY AND DISCLAIMER.

The manufacturer warrants only that the chemical composition of this product conforms to the ingredient statement given on the label, and that the product is reasonably suited for the labeled use when applied according to the Directions for Use.

THE MANUFACTURER NEITHER MAKES NOR INTENDS ANY OTHER EXPRESS OR IMPLIED WARRANTIES, INCLUDING ANY WARRANTY OF MERCHANTABILITY OR FITNESS FOR A PARTICULAR PURPOSE, WHICH ARE EXPRESSLY DISCLAIMED. This limited warranty does not extend to the use of the product inconsistent with label instructions, warnings or cautions, or to use of the product under abnormal conditions such as drought, excessive rainfall, tornadoes, hurricanes, etc. These factors are beyond the control of the manufacturer or the seller. Any damages arising from a breach of the manufacturer's warranty shall be limited to direct damages, and shall not include indirect or consequential damages such as loss of profits or values, except as otherwise provided by law.

The terms of this Limited Warranty and Disclaimer cannot be varied by any written or verbal statements or agreements. No employee or agent of the seller is authorized to vary or exceed the terms of this Limited Warranty and Disclaimer in any manner.

12/19

OPTION II - Directions for Use of "Barrier® Ornamental Landscaping Herbicide".

(This subset will be marketed under the brand name "Barrier® Ornamental Landscaping Herbicide." All Precautionary Statements have been maintained and the Directions for Use of this labeling match the use directions for the non-WPS sites previously approved. Also, the dosage rates, target weeds, application schedules, application methods, and sites match the previously approved text for the non-WPS sites.)

BARRIER® ORNAMENTAL LANDSCAPING HERBICIDE

A Selective Herbicide For Control Of Crabgrass, Foxtail, Shepherdspurge, Horsetail, Pigweed, Quackgrass, Canada Thistle, Leafy Spurge, Fescue, and Certain Other Annual and Perennial Weeds.

-OR-

A selective herbicide for control of annual and perennial grasses and weeds in noncrop areas: Landscape ornamentals not grown for commercial sale, parks, along roads & highways, around buildings, hedges, trees, sports grounds, along fences.

VAPOR BARRIER® HERBICIDE

ACTIVE INGREDIENT:

Dichlobenil: 2,6-dichlorobenzonitrile..... 4.0%

INERT INGREDIENTS:..... 96.0%

TOTAL 100.0%

BARRIER® is a registered trademark of PBI/Gordon Corporation.

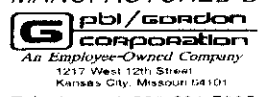
KEEP OUT OF REACH OF CHILDREN

CAUTION

See back of bag for additional Precautionary Statements and First Aid.

NET WEIGHT: 25 or 50 POUNDS

504/ AP102703
EPA REG. NO. 2217-675
EPA EST. NO. 2217-KS-2
MANUFACTURED BY:



Telephone: 1-800-821-7925



READ THE ENTIRE LABEL FIRST. OBSERVE ALL PRECAUTIONS AND FOLLOW DIRECTIONS CAREFULLY.

PRECAUTIONARY STATEMENTS

Hazards to Humans & Domestic Animals

CAUTION: Harmful if swallowed or absorbed through skin or inhaled. Avoid contact with eyes, skin or clothing. Avoid breathing dust.

Personal Protective Equipment (PPE):

Some materials that are chemical resistant to this product are made of any waterproof material. If you want more options, follow the instructions for category A on an EPA chemical-resistant category selection chart.

Applicators and handlers must wear:

- Long-sleeved shirt and long pants
- Socks and shoes
- Chemical resistant gloves

Follow manufacturer's instructions for cleaning/maintaining PPE. If no such instructions for washables, use detergent and hot water. Keep and wash PPE separately from other laundry.

User Safety Recommendations:

Users should:

- ◆ Wash hands before eating, drinking, chewing gum, using tobacco or using the toilet
- ◆ Remove clothing immediately if pesticide gets inside. Then wash thoroughly and put on clean clothing.
- ◆ Remove PPE immediately after handling this product. Wash the outside of gloves before removing. As soon as possible, wash thoroughly and change into clean clothing.

First Aid

If in eyes:	<ul style="list-style-type: none"> • Hold eye open and rinse slowly and gently with water for 15-20 minutes. • Remove contact lenses, if present, after the first 5 minutes, then continue rinsing eye. • Call a poison control center or doctor for treatment advice.
If swallowed:	<ul style="list-style-type: none"> • Call a poison control center or doctor immediately for treatment advice. • Have person sip a glass of water if able to swallow. • Do not induce vomiting unless told to do so by the poison control center or doctor. • Do not give anything by mouth to an unconscious person.
If on skin or clothing:	<ul style="list-style-type: none"> • Take off contaminated clothing. • Rinse skin immediately with plenty of water for 15 - 20 minutes. • Call a poison control center or doctor for treatment advice.
If inhaled:	<ul style="list-style-type: none"> • Move person to fresh air. • If person is not breathing, call 911 or an ambulance, then give artificial respiration, preferably mouth-to-mouth if possible. • Call a poison control center or doctor for further treatment advice.
<p>Have the product container or label with you when calling a poison control center or doctor or going for treatment. You may also contact 1-877-800-5556 for emergency medical treatment advice.</p>	

ENVIRONMENTAL HAZARDS:

Cover, collect, or incorporate granules spilled on the soil surface. For terrestrial uses, do not apply directly to water, or to areas where surface water is present or to intertidal areas below the mean high water mark. Do not contaminate water when disposing of equipment washwater.

GROUNDWATER ADVISORY:

This chemical has properties and characteristics associated with chemicals detected in groundwater. The use of this chemical in areas where soils are permeable, particularly where the water table is shallow may result in groundwater contamination.

DIRECTIONS FOR USE

It is a violation of Federal law to use this product in a manner inconsistent with its labeling.

Do not apply this product in a way that will contact workers or other persons, either directly or through drift. Only protected handlers may be in the area during application.

For any requirements specific to your State or Tribe, consult the agency responsible for pesticide regulation.

Not for use on plants being grown for sale or other commercial use, or for commercial seed production, or for research purposes. For use on plants intended for aesthetic purposes or climatic modification and being grown in ornamental gardens or parks, or on golf courses or lawns and grounds.

Keep unprotected persons out of treated areas until sprays have dried.

Barrier[®] Ornamental Landscaping Herbicide is recommended for use in all established landscape plantings in institutional, ornamental, and residential sites. Barrier[®] Ornamental Landscaping Herbicide is intended to be applied by lawn care operators, service technicians, maintenance applicators, and other landscape personnel.

Institutional sites are defined as areas around properties or facilities providing a service to public or private organizations including, but not limited to, hospitals, nursing homes, schools, museums, libraries, sport facilities, golf courses, and office buildings. Ornamental sites include established plantings around residences, parks, streets, retail outlets, cemeteries, industrial and institutional buildings. Finally, residential sites are defined as areas associated with the household or home life including, but not limited to apartment complexes, condominiums, and patient care areas of nursing homes, mental institutions, hospitals, or convalescent homes.

Barrier[®] Ornamental Landscaping Herbicide can be used for residual weed control in these noncropland areas:

- ◆ Around trees, shrubs, hedges, woody ornamentals, nonbearing fruit trees (ornamental), and certain groundcovers established in shelterbelts, windbreaks, and landscape plantings.
- ◆ Under fencelines, along fences, driveways, parking areas, parking lots, and borders of flower beds.
- ◆ Along roads and highways and under guard rails.
- ◆ Along golf cart pathways, sidewalks, and cemetery memorials.
- ◆ Around residences, buildings, and other outbuildings.

LANDSCAPE PLANTINGS:

Barrier® Ornamental Landscaping Herbicide is recommended for use around the established landscape ornamentals listed below:

Barrier® Ornamental Landscaping Herbicide is not recommended for flower gardens, wildflowers, foliage plants, or flowering bulbs.

Amur corktree	Euonymus	Mountain ash
Arborvitae	Filbert (Ornamental)	Nandina
Ash	Flowering almond	Oak
Azalea ¹	Flowering quince	Osmanthus (Holly-olive)
Barberry	Forsythia	Paxistima
Beauty bush	Gardenia	Pecan (Ornamental)
Birch	Goldenraintree	Photinia
Boxelder	Hackberry	Pine*
Boxwood	Heather	Pittosporum
Camellia	Holly (<i>Ilex</i> spp.) ²	Podocarpus
Caragana	Honeylocust	Poplar
Cleyera (<i>Cleyera japonica</i>)	Honeysuckle	Privet
Cotoneaster	Juniper	Pyracantha
Cottonwood	Kinnikinnick	Rhododendron
Crabapple (Ornamental)	Laurel	Rockrose
Deutzia	Leucothoe	Rose
Dogwood	Lilac	Russian olive
Eastern red cedar	Linden	Spirea
Elm	Locust	Squawcarpet
Elwood false cypress*	Magnolia	Willow*
English ivy (<i>Hedera helix</i>)	Maple*	Weigela
English walnut (Ornamental)	Mock orange	Yew (<i>Taxus</i>)
¹ Kurume, Mollis, Hardy hybrid types and hardy native species only.		
² Except <i>I. crenata</i> , <i>I. rotunda</i> , <i>I. vomitoria</i>		
*Not for use on these species within the State of California. Pine species are sensitive to injury from Barrier® Ornamental Landscaping Herbicide if applied within two years after transplanting.		

SOIL SURFACE TREATMENT:

Spring and fall applications are effective. Apply as soil surface treatment from late fall through early spring. For best results, applications in the states of Maine, Vermont, New Hampshire, Massachusetts, Rhode Island, Connecticut, New York, Michigan, Wisconsin, Minnesota, North Dakota, South Dakota and Montana should be made in early spring after soil has thawed. Do not apply to frozen soil or over the top of the snow. Old weed growth should not be removed before application. Do not make surface applications to areas which have been cultivated during the fall or summer prior to application.

SOIL TREATMENT WITH INCORPORATION:

If practical, shallow incorporation may increase the effectiveness of weed control. Apply and incorporate immediately after application in late fall or very early spring.

16/18

TREATMENTS ON GROUND (SOIL OR GRAVEL) IN LINERS IN WHICH ORNAMENTAL STOCK WILL BE PLACED:

Thoroughly incorporate the granules into the soil (or other target surface) through watering-in. Once the application has been properly incorporated through watering-in and the treated surface is dry, the WPS permits workers to enter the treated area during the restricted-entry interval without personal protective equipment or any other restriction if they are performing tasks that do not involve contact with the soil subsurface.

ANNUAL AND BIENNIAL WEED CONTROL:

This product is recommended for control of annual grass and broadleaf weeds such as: Annual Bluegrass (*Poa annua*), Bull Thistle, Camphorweed, Carpetweed, Chickweed, Citronmelon, Coffeeweed, Crabgrass, Cudweed, Evening Primrose, Fiddleneck, Florida Purslane (Pusley), Foxtail, Groundsel, Henbit, Jerusalem Oak Goosefoot, Knotweed, Lambsquarters, Maypops, Climbing Milkweed, Miner's Lettuce, Old Witchgrass, Pepperweed, Pineappleweed, Purslane, Ragweed, Deadnettle, Redroot Pigweed, Rosarypea, Russian Thistle, Shepherdspurse, Smartweed, Spanishneedles, Spurge, Teaweed, Texas Panicum, Wild Barley, Wild Carrot, Wild Mustard, and Wild Radish.

PERENNIAL WEED CONTROL:

This product is recommended for control of certain perennial weeds such as Artemisia, Bluegrass, Canada Thistle, Curly Dock, Dandelion, Dogfennel, False Dandelion (Catsear), Fescue, Horsetail, Leafy Spurge, Natalgrass, Orchardgrass, Plantain, Quackgrass, Russian Knapweed, Timothy, Wild Artichoke, Wild Aster, Yellow Rocket, and Yellow Woodsorrel.

Apply in early spring before seeds of annual weeds germinate or after cultivation has removed the growing weeds. Distribute granules uniformly over the soil surface. If treatment is followed by application of 1/2 to 1 inch of water by overhead irrigation, the lower rates are recommended. Shallow incorporation immediately after application is recommended in southern states. In other areas, shallow incorporation or sprinkler irrigation is suggested when applications are made during periods of high temperatures.

APPLICATION RATES:

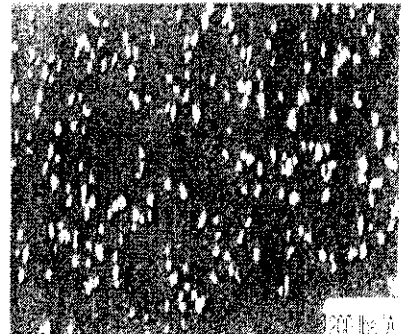
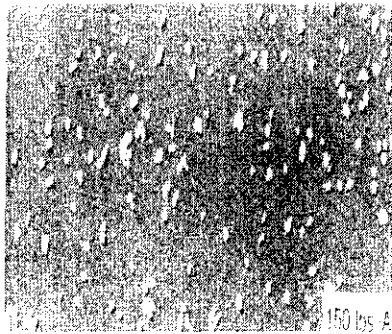
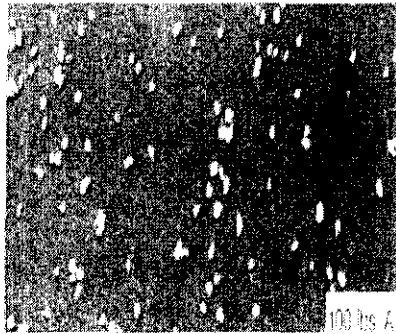
For annual and biennial weeds apply 100 to 150 pounds of product per acre. For perennial weeds listed, apply 150 to 200 pounds of product per acre. Do not apply more than 150 pounds of product per acre on Azalea, Boxwood, Euonymus, Forsythia, Heather, Holly, Ivy, Lilac, Leucothoe. Do not apply until 4 weeks after transplanting. Do not apply more than 150 pounds of product per acre on plantings less than one year old.

Table 1. Application rates of Barrier® Ornamental Landscaping Herbicide for annual, biennial, and perennial weed control.				
Weeds	Amount of Product		Approximate Treated Area for this Bag Size	
	Pounds/Acre	Pounds/1,000 Sq.Ft.	Bag Size	Sq.Ft.
Annual and Biennial Weeds	100 - 150	2.3 - 3.4	25# bag size	11,000 - 7,000
			50# bag size	22,000 - 14,000
Perennial Weeds	150 - 200	3.4 - 4.6	25# bag size	7,000 - 5,000
			50# bag size	14,000 - 11,000

17/1/88

EQUIPMENT CALIBRATION:

Determine the size of the treatment area, select the appropriate application rate, and calibrate the granular spreader. These three diagrams show the distribution pattern of the granules and will help with your equipment calibration.



100 Pounds of Product/Acre

150 Pounds of Product/Acre

200 Pounds of Product/Acre

USE PRECAUTIONS:

- ◆ Do not use in seedbeds, transplant or cutting beds, commercial nurseries or greenhouses. Do not apply until 6 months after planting rooted cuttings.
- ◆ Do not apply to areas on slopes above lawns or susceptible crops as runoff from treated area could cause injury.
- ◆ Do not exceed the maximum recommended amount per growing season. Do not use on "St. Lucie fine sand", "Arzell fine sand" or other light sandy soil.
- ◆ Do not graze livestock in treated areas.
- ◆ Avoid applications which allow Barrier® Ornamental Landscaping Herbicide to lodge in the foliage, particularly in conifer species, such as pines, yews, etc.
- ◆ Do not allow Barrier® Ornamental Landscaping Herbicide to accumulate and be in contact with trunk at or below soil line.
- ◆ Do not apply this product by backpack applicator.

UNDER ASPHALT:

For general weed control under asphalt (in areas such as roadways, parking lots, recreational areas), after final grade is achieved, apply 250 pounds of product per acre (5¼ pounds of product per 1,000 square feet). Treated area should be covered with asphalt as soon as possible. For resurfacing work, existing weeds should be sprayed with a contact herbicide prior to application.

This chemical has properties and characteristics associated with chemicals detected in groundwater. The use of this chemical in areas where soils are permeable, particularly where the water table is shallow may result in groundwater contamination.

STORAGE & DISPOSAL

Do not contaminate water, food, or feed by storage or disposal.

PESTICIDE STORAGE: Store in original bag in a locked storage area inaccessible to children or pets. Storage area should be cool and dry. Keep bag tightly closed. Reseal bag by rolling down top to product level and taping or clipping. Do not store near seeds, bulbs, or in greenhouses.

PESTICIDE DISPOSAL: Wastes resulting from the use of this product may be disposed of at an approved waste disposal facility.

CONTAINER DISPOSAL: Completely empty bag into application equipment. Then dispose of empty bag in a sanitary landfill, or by incineration, or if allowed by State and local authorities by burning. If burned stay out of smoke.

18/18

LIMITED WARRANTY AND DISCLAIMER.

The manufacturer warrants only that the chemical composition of this product conforms to the ingredient statement given on the label, and that the product is reasonably suited for the labeled use when applied according to the Directions for Use.

THE MANUFACTURER NEITHER MAKES NOR INTENDS ANY OTHER EXPRESS OR IMPLIED WARRANTIES, INCLUDING ANY WARRANTY OF MERCHANTABILITY OR FITNESS FOR A PARTICULAR PURPOSE, WHICH ARE EXPRESSLY DISCLAIMED. This limited warranty does not extend to the use of the product inconsistent with label instructions, warnings or cautions, or to use of the product under abnormal conditions such as drought, excessive rainfall, tornadoes, hurricanes, etc. These factors are beyond the control of the manufacturer or the seller. Any damages arising from a breach of the manufacturer's warranty shall be limited to direct damages, and shall not include indirect or consequential damages such as loss of profits or values, except as otherwise provided by law.

The terms of this Limited Warranty and Disclaimer cannot be varied by any written or verbal statements or agreements. No employee or agent of the seller is authorized to vary or exceed the terms of this Limited Warranty and Disclaimer in any manner.