



UNITED STATES ENVIRONMENTAL PROTECTION AGENCY
WASHINGTON, D.C. 20460

OFFICE OF
PREVENTION, PESTICIDES AND
TOXIC SUBSTANCES

MAY 29 2007

James L. Kunstman, Ph.D.
Director of Regulatory Services
PBI/Gordon Corporation
Post Office Box 014090
Kansas City, Missouri 64101

RE: To Add Guaranteed Analysis of 26-4-13 to the Label
EPA Registration Number: 2217-579
Date of Submission: March 21, 2007

Dear Dr. Kunstman

The Agency is in receipt of your Application for Pesticide Notification under Pesticide Registration Notice (PRN) 98-10 dated March 21, 2007, for the product Gordon's Trimec® Weed and Feed 30 24-8-8. The Registration Division (RD) has conducted a review of this request for its applicability under PRN 98-10 and finds that the actions requested fall within the scope of PRN 98-10. The label submitted with the application has been stamped "Notification" and will be placed in our records.

If you have any questions, please call me directly at 703-305-6249 or Joyce Edwards of my staff at 703-308-5479.

Sincerely,

Linda Arrington
Notifications & Minor Formulations Team Leader
Registration Division (7505P)
Office of Pesticide Programs

2/36

Master Label for **GORDON'S TRIMEC[®]** **WEED & FEED 30** **24-4-8**

NOTIFICATION
MAY 29 2007

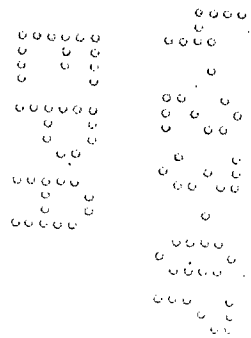
Includes:

Sublabel 1	Gordon's Trimec [®] Weed & Feed 30 24-4-8
Sublabel 2	For use by supplemental distributor for <i>Bayer AdvancedTM Triple Action Lawn Fertilizer Plus Weed Control^{II}</i>
Sublabel 3	For use by supplemental distributor for <i>Bayer AdvancedTM Triple Action Winterizer Fertilizer Plus Weed Control^{II}</i>

575 AP041607
EPA REG. NO. 2217-579
EPA EST. NO. 2217-KS-X
MANUFACTURED BY:



Telephone: 1-800-821-7925



3/36

GORDON'S TRIMEC® WEED & FEED 30 24-4-8

**Sublabel 1: For use for Gordon's Trimec® Weed & Feed 30
24-4-8, and supplemental registrations.**

ACTIVE INGREDIENTS:

2,4-dichlorophenoxyacetic acid.....	0.69%
(+)-(R)-2-(2 methyl-4-chlorophenoxy)propionic acid	0.15%
Dicamba: 3,6-dichloro-o-anisic acid.....	0.06%
INERT INGREDIENTS:.....	99.10%
TOTAL	100.00%

THIS PRODUCT CONTAINS:

- 13.8 lbs. 2,4-dichlorophenoxyacetic acid equivalent per ton
 - 3.0 lbs. (+)-(R)-2-(2 methyl-4-chlorophenoxy)propionic acid equivalent per ton
 - 1.2 lbs. 3,6-dichloro-o-anisic acid equivalent per ton
- Isomer Specific by AOAC Methods.
Contains the single isomer form of Mecoprop-p.
TRIMEC® is a registered trademark of PBI/GORDON CORPORATION

KEEP OUT OF REACH OF CHILDREN

CAUTION

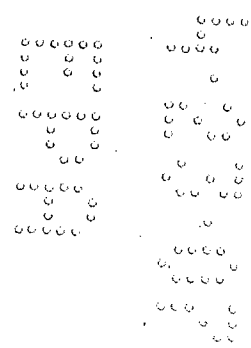
See back panel for Precautionary Statements.

NET WEIGHT: (15, 16, 18 or 20) POUNDS

575 AP041607
EPA REG. NO. 2217-579
EPA EST. NO. 2217-KS-X
MANUFACTURED BY:



Telephone: 1-800-821-7925



4/36



READ THE ENTIRE LABEL FIRST. OBSERVE ALL PRECAUTIONS AND FOLLOW DIRECTIONS CAREFULLY.

PRECAUTIONARY STATEMENTS

Hazards to Humans & Domestic Animals

CAUTION: Harmful if swallowed. Do not inhale dust. Do not allow contact with skin, eyes or clothing. When using this product, wear long-sleeved shirt, long pants, socks and shoes.

After using this product, remove clothing and launder separately before reuse, and promptly and thoroughly wash hands and exposed skin with soap and water.

First Aid

If in eyes:	<ul style="list-style-type: none"> • Hold eye open and rinse slowly and gently with water for 15 - 20 minutes. Remove contact lenses, if present, after the first 5 minutes, then continue rinsing. • Call a poison control center or doctor for treatment advice.
If on skin or clothing:	<ul style="list-style-type: none"> • Take off contaminated clothing. • Rinse skin immediately with plenty of water for 15 - 20 minutes. • Call a poison control center or doctor for treatment advice.
If swallowed:	<ul style="list-style-type: none"> • Call a poison control center or doctor immediately for treatment advice. • Have person sip a glass of water if able to swallow. • Do not induce vomiting unless told to do so by a poison control center or doctor. • Do not give anything by mouth to an unconscious person.
<p>Have the product container or label with you when calling a poison control center or doctor or going for treatment.</p> <p>You may also call toll-free, 1-877-800-5556 for emergency medical treatment information.</p>	

ENVIRONMENTAL HAZARDS:

Drift or runoff may adversely affect nontarget plants. Do not apply directly to water. Do not contaminate water when disposing of equipment washwater. Do not apply when weather conditions favor drift from target area.

DIRECTIONS FOR USE

It is a violation of Federal law to use this product in a manner inconsistent with its labeling.

Do not allow people (other than applicator) or pets on treatment area during application. Do not enter treatment area until spray has dried or dust has settled.

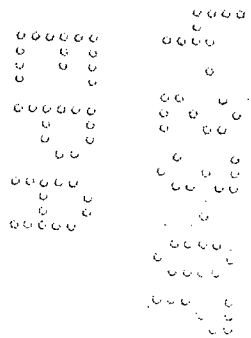
STORAGE AND DISPOSAL

STORAGE: Store in original container and keep any bags containing unused product in a locked storage area inaccessible to children and domestic animals. Do not store near food or feedstuffs.

DISPOSAL:

If Empty—Do not reuse this container. Place in trash or offer for recycling if available.

If Partly Filled—Call your local solid waste agency for disposal instructions. Never place unused product down any indoor or outdoor drain.



USE PRECAUTIONS:

Do not use on dichondra, carpetgrass, closely mowed bentgrass putting greens or St. Augustinegrass. Do not use this product where desirable clovers are present or allow the material to drift onto flowers, vegetables or ornamental shrubbery. Do not spread over exposed roots of trees and ornamentals. Do not exceed specified dosages for any area; be particularly careful within dripline of tree and other ornamental species. Apply when the air is calm. Application of this product to newly seeded areas should be delayed until the third mowing. Do not contaminate domestic or irrigation waters.

INSTRUCTIONS:

Gordon's Trimec® Weed & Feed 30 contains Trimec® herbicide. Trimec® controls a wide range of lawn weeds, including dandelion, chickweed, plantain, henbit, spurge and many others commonly found in home lawns. In addition, a (X-X-X analysis of fertilizer grade) fertilizer provides a supply of plant food. Possible retreatment may be necessary if (a) lawn is heavily overrun by weeds or, (b) if adverse low moisture conditions prevail and weeds are in a state of poor growth. A second application may be made in approximately 30 days. Treated areas may be seeded 3 to 4 weeks after application.

Note to Supplemental Registrants: Guarantees for plant nutrients other than nitrogen, phosphorous, and potassium may be permitted or required by regulation by the _____. The guarantees for such other nutrients shall be expressed in the form of the element. The source (oxides, salts, chelates, etc.) of such other nutrients may be required to be stated and may be included on the label.

For state registrations in Kentucky, add the following paragraph:

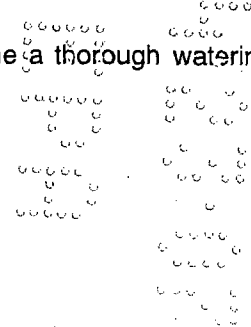
A lawn typically will utilize 1 to 4 pounds of nitrogen per 1,000 square feet per growing season. When used as directed, this product will supplement your regular fertilizer program by providing (*Number of pounds) of nitrogen per 1,000 square feet. Please consult your local extension office for questions regarding a regular fertilizer program suitable for your geographic region.

Labeling Requirements:

- All fertilizer products distributed in Washington at a minimum, must have the following labeling statement: *"This product has been registered with the Washington State Department of Agriculture. When applied as directed, this fertilizer meets the Washington standards for arsenic, cadmium, cobalt, mercury, molybdenum, lead, nickel, selenium, and zinc. You have the right to receive specific information about Washington standards from the distributor of this product."*
- After July 1, 1999, the label must also state: *"Information received by the Washington State Department of Agriculture regarding the components in this product is available on the internet at <http://www.wa.gov/agr/>."*
- -OR- Information regarding the contents and levels of metals in this product is available on the Internet as <http://www.aapfco.org/metals.htm>.

The maximum application rate to turf is 1.2 pounds 2,4-D acid equivalent per acre per application per site. The maximum number of broadcast applications per treatment site is 2 per year.

1. Mow lawn to normal height 1 to 2 days before application.
2. Water lawn thoroughly at least 1 day before application to sustain moisture until the next watering (see step 4).
3. Apply when weeds are young and actively growing, preferably in the morning when the dew is on the grass. If grass is not moist at time of application, sprinkle lightly with water to hold the material and prevent dust drift onto nontarget plants.
4. Do not wash from weed leaves for 1 to 2 days after application. At this time a thorough watering should be made.



SPREADERS AND CALIBRATION:

1. Drop spreaders and rotary spreaders must be calibrated for accurate application of this product.
2. Close spreader opening (orifice).
3. Adjust spreader setting using the Spreader Suggestions chart

Application Rate = 3 lbs. of product per 1,000 square feet.

SUGGESTED SPREADER SETTINGS:

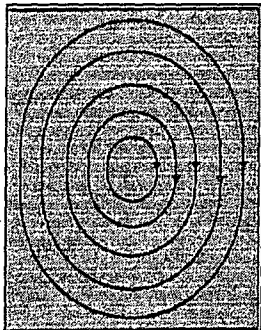
Centrifugal/Rotary Spreaders	Application Rate, 3 lbs./1,000 sq.ft.
Frank's Broadcast	2 ¼
Scotts Speedy Green	5
Radio Flyer #0047	8 ¼
True Temper Rotary CB2000	3 ¾
Earthway Rotary #2050SU	14 ½
Drop Spreaders	Application Rate, 3 lbs./1,000 sq.ft.
Frank's Drop	8 ¼
Greenview II	5 ½
True Temper CD20	4 - 4 ½
Scotts Accugreen AG1	5 ½
Earthway Drop #7300SU	13 ½

These spreader settings are approximate. Differences may occur due to the condition of spreader, speed at which applied and roughness of area treated. Check your spreader on 330 square feet and adjust to apply at the rate of 1 pound per 1,000 square feet.

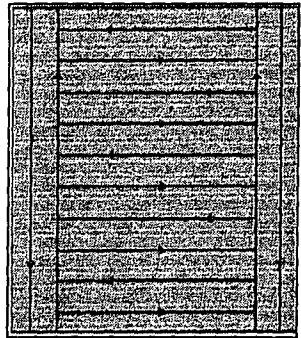
4. CALIBRATION INSTRUCTIONS:

- For 3.0 pounds of product per 1,000 square feet of turfgrass: Check you spreader on 330 square feet and adjust to apply at the rate of 1 pound of product per 330 square feet.
 - For 3.2 pounds of product per 1,000 square feet of turfgrass: Check you spreader on 310 square feet and adjust to apply at the rate of 1 pound of product per 310 square feet.
 - For 3.6 pounds of product per 1,000 square feet of turfgrass: Check you spreader on 275 square feet and adjust to apply at the rate of 1 pound of product per 275 square feet.
 - For 4.0 pounds of product per 1,000 square feet of turfgrass: Check you spreader on 250 square feet and adjust to apply at the rate of 1 pound of product per 250 square feet.
5. Fill spreader. Fill spreader on driveway or sidewalk to eliminate the chance of spillage on the lawn.
 6. Apply the product to lawn. Refer to the patch charts below:

Path A for centrifugal/rotary spreaders.



Path B for drop spreaders.



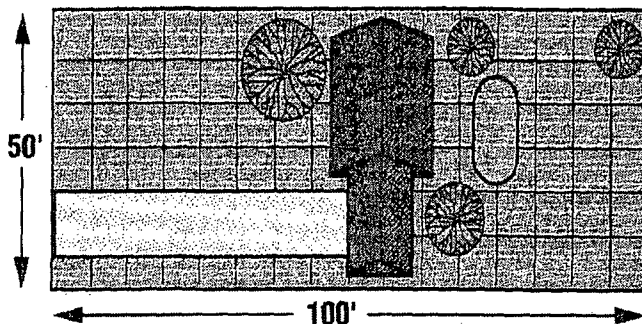
7. Close the spreader openings when turning to change directions or when stopping.
8. If using a centrifugal/rotary spreader, avoid spreading product into adjacent landscape, flowers or vegetable plantings.



NOTE: Supplemental applications of lawn fertilizer are needed to achieve a minimum 1 pound nitrogen per 1,000 square feet.

This ___ pound bag should cover approximately ___ square feet (___ ft. x ___ ft.) Refer to the table and picture to determine the size of your lawn.

COVERAGE CHART	
_____	Length
X _____	Width
= _____	Total Sq. Ft.
- _____	Non-Lawn Areas
= _____	Total Sq. Ft. Coverage you need.



24-4-8 GUARANTEED ANALYSIS	
Total Nitrogen (N).....	24%
Water Insoluble Nitrogen	5%
Available Phosphate (P ₂ O ₅).....	4%
Soluble Potash (K ₂ O).....	8%

Note to Supplemental Registrants: Fertilizer sources may vary in micronutrient composition, and iron may discolor or stain concrete. For fertilizers containing iron: Sweep all fertilizer from concrete surfaces immediately after application. Do not wash this product from concrete surfaces because fertilizers which contain iron may cause discoloration upon oxidation.

- WEEDS -		
Bedstraw	Knotweed	Ragweed
Black medic	Lambsquarters	Sheep sorrel
Buckhorn	Lespedeza	Shepherdspurse
Burdock	Mallow	Speedwell
Chickweed	Morningglory	Spurge
Chicory	Oxalis	Thistle
Clover	Peppergrass	Wild carrot
Dandelion	Pigweed	Wild garlic
Dock	Plantain	Wild lettuce
Ground ivy	Poison ivy	Wild onion
Healall	Poison oak	Yarrow
Henbit	Purslane	

LIMITED WARRANTY AND DISCLAIMER.

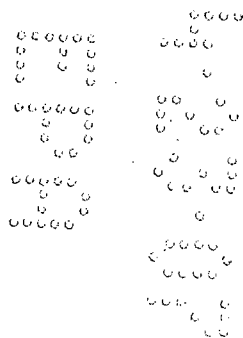
Read the entire Directions for Use, Conditions, Disclaimer of Warranties and Limitations of Liability before using this product. If terms are not acceptable, return the unopened product container at once to the seller.

By using this product, user or buyer accepts the following Conditions, Disclaimer of Warranties and Limitations of Liability.

The manufacturer warrants only that the chemical composition of this product conforms to the ingredient statement given on the label, and that the product is reasonably suited for the labeled use when applied according to the Directions for Use.

THE MANUFACTURER NEITHER MAKES NOR INTENDS ANY OTHER EXPRESS OR IMPLIED WARRANTIES, INCLUDING ANY WARRANTY OF MERCHANTABILITY OR FITNESS FOR A PARTICULAR PURPOSE, WHICH ARE EXPRESSLY DISCLAIMED. This limited warranty does not extend to the use of the product inconsistent with label instructions, warnings or cautions, or to use of the product under abnormal conditions such as drought, excessive rainfall, tornadoes, hurricanes, etc. These factors are beyond the control of the manufacturer or the seller. Any damages arising from a breach of the manufacturer's warranty shall be limited to direct damages, and shall not include indirect or consequential damages such as loss of profits or values, except as otherwise provided by law.

The terms of this Limited Warranty and Disclaimer cannot be varied by any written or verbal statements or agreements. No employee or agent of the seller is authorized to vary or exceed the terms of this Limited Warranty and Disclaimer in any manner.



APPENDIX

I. Previously Approved Fertilizer Grades:

- ◆ Fertilizer grades with nutrient contents expressed as the percentages of N, P₂O₅, and K₂O include the following:

10-6-4	16-3-5	20-10-0-(1)	23-7-7	25-4-8	28-3-7	30-4-8
10-16-20	16-6-9	20-10-5	24-3-7	26-3-3	28-3-8	32-4-8
10-18-10	18-3-5	21-5-7	24-4-8	26-3-5	29-3-4	22-3-14
12-5-5	18-6-12	22-6-6	25-3-3	26-4-6	30-3-4	30-3-4
15-5-10	20-4-6	22-7-7	25-3-5	26-4-13	30-3-5	
16-2-3	20-4-8	22-10-10	25-3-8	28-3-3	30-3-10	

The fertilizer grade guaranteed analyses may contain macronutrients and micronutrients. The nutrient contents expressed will vary among states, and the analyses will differ between supplemental registrations. The following guaranteed analyses presentations have previously been submitted as notifications:

10-16-20 GUARANTEED ANALYSIS	
Total Nitrogen (N).....	10%
6.0% Ammoniacal Nitrogen	
4.0% Urea Nitrogen	
Available Phosphate (P ₂ O ₅).....	16%
Soluble Potash (K ₂ O).....	20%
Magnesium (Mg).....	1.0%
0.1% Water Soluble Magnesium (Mg)	
Sulfur (S).....	2.0%
2.0% Combined Sulfur (S)	
Iron (Fe).....	1.0%
Manganese (Mn).....	0.5%
0.1% Water Soluble Manganese (Mn)	
Nutrient Sources: Urea, Ammonium Phosphate, Ammonium Sulfate, Muriate of Potash, Ferrous Sulfate, Manganese Oxide, Manganese Sulfate, Sulfate of Potash Magnesia and Magnesium oxide.	

29-3-4 GUARANTEED ANALYSIS	
Total Nitrogen (N).....	29%
1.1% Ammoniacal Nitrogen	
27.9% Urea Nitrogen	
Available Phosphate (P ₂ O ₅).....	3%
Soluble Potash (K ₂ O).....	4%
Derived from: Polymer-coated urea, urea, diammonium phosphate, and muriate of potash.	
*11.0% slowly available urea nitrogen from polymer coated urea.	
Chlorine (Cl), note more than.....	4.0%

10-18-10 GUARANTEED ANALYSIS	
Total Nitrogen (N).....	10%
10.0% Ammoniacal Nitrogen	
Available Phosphate (P ₂ O ₅).....	18%
Soluble Potash (K ₂ O).....	10%
Sulfur (S).....	2.0%
5.0% Combined Sulfur (S)	
Nutrient Sources: Ammonium Sulfate, Ammonium Phosphate and Muriate of Potash.	

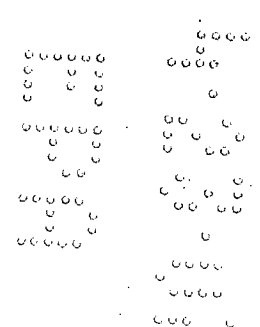
4/9%

26-4-6 GUARANTEED ANALYSIS	
Total Nitrogen (N).....	26%
1.8% Ammoniacal Nitrogen	
24.4% Urea Nitrogen	
Available Phosphoric Acid(P ₂ O ₅).....	4%
Soluble Potash (K ₂ O).....	6%
Boron (B).....	0.02%
Copper (Cu).....	0.05%
Iron (Fe).....	1.00%
Total Manganese (Mn).....	0.06%
Molybenum (Mo).....	0.0005%
Zinc (Zn).....	0.05%
Primary Plant Food Sources: Sulfur coated urea, urea, diammonium phosphate, muriate of potash.	
Secondary Plant Food Sources: Fertilizer grade borate, sulfates and oxides of copper, sulfates and oxides of iron, oxides of manganese, fertilizer grade molybdate, and sulfates and oxides of zinc.	
*4.0% slowly available urea nitrogen from sulfur coated urea.	
Chlorine (Cl), not more than	4.8%

28-3-7 GUARANTEED ANALYSIS	
Total Nitrogen (N).....	28%
1.2% Ammoniacal Nitrogen	
26.8% Urea Nitrogen	
Available Phosphoric Acid(P ₂ O ₅).....	3%
Soluble Potash (K ₂ O).....	7%
Primary Plant Food Sources: Polymer-coated urea, urea, diammonium phosphate, muriate of potash	
*7.0% slowly available urea nitrogen from polymer-coated urea.	
Chlorine (Cl), not more than	6.4%

II. Advertising claims that may be presented on the retail containers:

- ◆ (Fifteen, Sixteen, Eighteen or Twenty) Pounds Covers Up To 5,000 Square Feet.
- ◆ Controls/Kills dandelion, chickweed, knotweed, plantain, henbit, spurge and many other broadleaf weeds; some of which are listed on the back panel
- ◆ An 18-6-12 fertilizer provides slow-release feeding to promote winter hardiness and drought tolerance in lawns.
- ◆ Feeds your lawn for up to 12 weeks.
- ◆ Controls/Kills over 30 varieties of weeds while feeding your lawn.
- ◆ Greens lawns and develops deep roots while controlling weeds.
- ◆ Bring out the best with the turf magic touch!
- ◆ Controls/Kills dandelion, plantain, and other weeds.
- ◆ Feeds the lawn with two (2) types of nitrogen and is pelleted for easy application.
- ◆ Controls (Number) weeds! (Listing of weeds may include the following.)
- Kills dandelion, chickweed, clover and most common lawn weeds.
- Triple Action Feeding works at every level.
 - Grass- Greener, Thicker lawn
 - Roots – Stronger Root System
 - Soil – Enriches & Fortifies Soil
- Builds a better lawn – Guaranteed

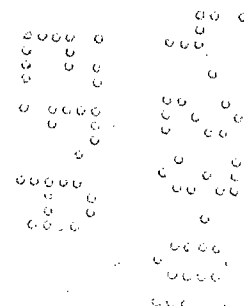


4/36

- Gordon's Trimec Weed & Feed 30 kills unsightly weeds such as dandelion, chickweed and clover while it nourishes your lawn. Its Triple Action formula contains slow-release nitrogen which continuously feeds the grass, roots and soil for up to two full months [all winter long]. And it's guaranteed not to burn. The result is a greener, thicker lawn [this Fall and quicker green-up next Spring]. You're just one application away from a better lawn. That's the [company name] Better Lawn Guarantee.
- Triple Action Feeding works at every level for a Deep-Down Green!
- Why is Triple Action better? By feeding at all levels, your lawn receives the primary nutrients it needs to thrive. This ensures thicker, greener grass, stronger root system, and richer soil – the key to building a lush lawn that lasts.
- Grass: Builds thicker, greener grass and enhances overall appearance.
- Roots: Builds stronger, deeper root systems which transport nutrients from the soil to the grass to help lawn withstand heat-stress and drought.
- Soil: Enriches and fortifies your soil. Rich, fertile soil provides a foundation for establishing roots and replenishes vital primary nutrients.
- For questions or comments, call toll-free 1-877-bayerAL (1-877-229-3725)
- Made in the U.S.A.
- Kills weeds and builds a thick, green Fall lawn.
- Nourishes all Winter for a quick Spring green-up.



- Controls most annual broadleaf weeds
- Premium slow release fertilizer stimulates grass growth to quickly conceal where weeds have died.
 - NITROGEN for Dense Green Lawns
 - PHOSPHORUS Improves Root Growth
 - POTASSIUM Vital for Growth and Drought Resistance



◆ Controls (Number) weeds! (Listing of weeds may include the following.)

- WEEDS -			
Annual yellow sweetclover	Clover, white	Mustard	Spiny cocklebur
Aster	Cockle	Narrowleaf plantain	Spiny sowthistle
Austrian fieldcress	Cocklebur	Narrowleaf vetch	Spotted catsear
Bedstraw	Common mullein	Nettle	Spotted spurge
Beggarticks	Creeping Charlie	Orange hawkweed	Spurweed
Betony, Florida	Creeping jenny	Oriental cocklebur	Stinging nettle
Bindweed, field	Cudweed	Oxalis	Strawberry, India mock
Bird vetch	Curly dock	Parsley-piert	Tall nettle
Bitter wintercress	Daisy, English	Parsnip	Tall vervain
Bittercress, hairy	Daisy fleabane	Pearlwort	Tansy ragwort
Bitterweed	Daisy, oxeye	Pennycress	Tansy mustard
Black-eyed Susan	Dandelion	Pepperweed	Tanweed
Black medic	Dichondra	Pigweed	Thistle
Black mustard	Dogfennel	Pineywoods bedstraw	Trailing crownvetch
Blackseed plantain	Dollarweed	Plains coreopsis	Tumble mustard
Blessed thistle	False dandelion	Plantain	Tumble pigweed
Bloodflower milkweed	Falseflax	Poison ivy	Velvetleaf
Blue lettuce	False sunflower	Poison oak	Venice mallow
Blue vervain	Fiddleneck	Pokeweed	Virginia buttonweed
Bracted plantain	Florida pusley	Poorjoe	Virginia creeper
Bristly oxtongue	Frenchweed	Prairie sunflower	Virginia pepperweed
Broadleaf dock	Galinsoga	Prickly lettuce	Wavyleaf bullthistle
Broadleaf plantain	Goldenrod	Prickly sida	Western clematis
Broomweed	Ground ivy	Prostrate knotweed	Western salsify
Buckhorn	Gumweed	Prostrate pigweed	White mustard
Buckhorn plantain	Hairy fleabane	Prostrate spurge	Wild aster
Bulbous buttercup	Hawkweed	Prostrate vervain	Wild buckwheat
Bull thistle	Healall	Puncturevine	Wild carrot
Bullnettle	Heartleaf drymary	Purslane, common	Wild four-o'clock
Burclover	Heath aster	Ragweed	Wild garlic
Burdock	Hedge bindweed	Red sorrel	Wild geranium
Burning nettle	Hedge mustard	Redroot pigweed	Wild lettuce
Burweed	Henbit	Redstem filaree	Wild marigold
Buttercup	Hoary cress	Rough cinquefoil	Wild mustard
Buttonweed	Hoary plantain	Rough fleabane	Wild onion
Canada thistle	Hoary vervain	Russian pigweed	Wild parsnip
Carolina geranium	Horsenettle	Russian thistle	Wild radish
Carpetweed	Jimsonweed	Scarlet pimpernel	Wild rape
Catchweed bedstraw	Knawel	Scotch thistle	Wild strawberry
Catnip	Knotweed	Sheep sorrel	Wild sweet potato
Catsear	Kochia	Shepherdspurse	Wild vetch
Chickweed, common	Lambsquarters	Slender plantain	Woodsorrel
Chickweed, mouseear	Lespedeza	Smallflower galinsoga	Woolly croton
Chicory	Mallow	Smooth dock	Woolly morningglory
Cinquefoil	Matchweed	Smooth pigweed	Woolly plantain
Clover, crimson	Mexicanweed	Sorrel	Wormseed
Clover, hop	Milk vetch	Sowthistle	Yarrow
Clover, red	Morningglory	Spanishneedles	Yellow rocket
Clover, strawberry	Mouseear hawkweed	Speedwell	Yellowflower pepperweed
Clover, sweet	Mugwort	Spiny amaranth	and other broadleaf weeds
	Musk thistle		

13/
36

GORDON'S TRIMEC®

WEED & FEED 30

24-4-8

**Sublabel 2: For use by supplemental distributor for Bayer
Advanced Triple Action Lawn Fertilizer Plus Weed Control "**

ACTIVE INGREDIENTS:

2,4-D (CAS No. 94-75-7)	0.69%
Mecoprop-p (CAS No. 16484-77-8)	0.15%
Dicamba (CAS No. 1918-00-9)	0.06%
INERT INGREDIENTS:	99.10%
TOTAL	100.00%

THIS PRODUCT CONTAINS:

- 13.8 lbs. 2,4-D acid equivalent per ton
- 3.0 lbs. Mecoprop-p acid equivalent per ton
- 1.2 lbs. Dicamba acid equivalent per ton
- Isomer Specific by AOAC Methods.
- Contains the single isomer form of Mecoprop-p.
- TRIMEC® is a registered trademark of PBI/GORDON CORPORATION

KEEP OUT OF REACH OF CHILDREN

CAUTION

See back panel for Precautionary Statements.

NET WEIGHT: (15, 16, 18 or 20) POUNDS

575 AP041607
 EPA REG. NO. 2217-579
 EPA EST. NO. 2217-KS-X
MANUFACTURED BY:



Telephone: 1-800-821-7925

14/26



READ THE ENTIRE LABEL FIRST. OBSERVE ALL PRECAUTIONS AND FOLLOW DIRECTIONS CAREFULLY.

PRECAUTIONARY STATEMENTS

Hazards to Humans & Domestic Animals

CAUTION: Harmful if swallowed. Do not inhale dust. Do not allow contact with skin, eyes or clothing. When using this product, wear long-sleeved shirt, long pants, socks and shoes.

After using this product, remove clothing and launder separately before reuse, and promptly and thoroughly wash hands and exposed skin with soap and water.

First Aid

If in eyes:	<ul style="list-style-type: none"> • Hold eye open and rinse slowly and gently with water for 15 - 20 minutes. Remove contact lenses, if present, after the first 5 minutes, then continue rinsing eye. • Call a poison control center or doctor for treatment advice.
If on skin or clothing:	<ul style="list-style-type: none"> • Take off contaminated clothing. • Rinse skin immediately with plenty of water for 15 - 20 minutes. • Call a poison control center or doctor for treatment advice.
If swallowed:	<ul style="list-style-type: none"> • Call a poison control center or doctor immediately for treatment advice. • Have person sip a glass of water if able to swallow. • Do not induce vomiting unless told to do so by a poison control center or doctor. • Do not give anything by mouth to an unconscious person.
<p>Have the product container or label with you when calling a poison control center or doctor or going for treatment.</p> <p>You may also call toll-free, 1-877-800-5556 for emergency medical treatment information.</p>	

ENVIRONMENTAL HAZARDS:

Drift or runoff may adversely affect nontarget plants. Do not apply directly to water. Do not contaminate water when disposing of equipment washwater. Do not apply when weather conditions favor drift from target area.

DIRECTIONS FOR USE

It is a violation of Federal law to use this product in a manner inconsistent with its labeling.

Do not allow people (other than applicator) or pets on treatment area during application. Do not enter treatment area until dust has settled.

STORAGE AND DISPOSAL

STORAGE: Store in original container and keep any bags containing unused product in a locked storage area inaccessible to children and domestic animals. Do not store near food or feedstuffs.

DISPOSAL:

If Empty—Do not reuse this container. Place in trash or offer for recycling if available.

If Partly Filled—Call your local solid waste agency or toll free number (1-XXX-XXXX) for disposal instructions. Never place unused product down any indoor or outdoor drain.

15/36

USE PRECAUTIONS:

Do not use on dichondra, carpetgrass, closely mowed bentgrass putting greens or St. Augustinegrass. Do not use this product where desirable clovers are present or allow the material to drift onto flowers, vegetables or ornamental shrubbery. Do not spread over exposed roots of trees and ornamentals. Do not exceed specified dosages for any area; be particularly careful within dripline of tree and other ornamental species. Apply when the air is calm. Application of this product to newly seeded areas should be delayed until the third mowing. Do not contaminate domestic or irrigation waters.

INSTRUCTIONS:

Gordon's Trimec® Weed & Feed 30 contains Trimec® herbicide. Trimec® controls a wide range of lawn weeds, including dandelion, chickweed, plantain, henbit, spurge and many others commonly found in home lawns. In addition, a (X-X-X analysis of fertilizer grade) fertilizer provides a supply of plant food. Possible retreatment may be necessary if (a) lawn is heavily overrun by weeds or, (b) if adverse low moisture conditions prevail and weeds are in a state of poor growth. A second application may be made in approximately 30 days. Treated areas may be seeded 3 to 4 weeks after application.

Note to Supplemental Registrants: Guarantees for plant nutrients other than nitrogen, phosphorous, and potassium may be permitted or required by regulation by the _____. The guarantees for such other nutrients shall be expressed in the form of the element. The source (oxides, salts, chelates, etc.) of such other nutrients may be required to be stated and may be included on the label.

For state registrations in Kentucky, add the following paragraph:

A lawn typically will utilize 1 to 4 pounds of nitrogen per 1,000 square feet per growing season. When used as directed, this product will supplement your regular fertilizer program by providing (*Number of pounds) of nitrogen per 1,000 square feet. Please consult your local extension office for questions regarding a regular fertilizer program suitable for your geographic region.

Labeling Requirements:

- All fertilizer products distributed in Washington at a minimum, must have the following labeling statement: *"This product has been registered with the Washington State Department of Agriculture. When applied as directed, this fertilizer meets the Washington standards for arsenic, cadmium, cobalt, mercury, molybdenum, lead, nickel, selenium, and zinc. You have the right to receive specific information about Washington standards from the distributor of this product."*
- After July 1, 1999, the label must also state: *"Information received by the Washington State Department of Agriculture regarding the components in this product is available on the internet at <http://www.wa.gov/agt/>."*
- -OR- Information regarding the contents and levels of metals in this product is available on the internet at <http://www.regulatory-info-ba.com>
- -OR- Information regarding the contents and levels of metals in this product is available on the Internet as <http://www.aapfco.org/metals.htm>.

The maximum application rate to turf is 1.2 pounds 2,4-D acid equivalent per acre per application per site. The maximum number of broadcast applications per treatment site is 2 per year.

1. Mow lawn to normal height 1 to 2 days before application.
2. Water lawn thoroughly at least 1 day before application to sustain moisture until the next watering (see step 4).
3. Apply when weeds are young and actively growing, preferably in the morning when the dew is on the grass. If grass is not moist at time of application, sprinkle lightly with water to hold the material and prevent dust drift onto nontarget plants.
4. Do not wash from weed leaves for 1 to 2 days after application. At this time a thorough watering should be made.

4/36

- WEEDS -

Annual yellow sweetclover	Cockle	Musk thistle	Spiny amaranth
Aster	Cocklebur	Mustard	Spiny cocklebur
Austrian fieldcress	Common mullein	Narrowleaf plantain	Spiny sowthistle
Bedstraw	Creeping Charlie	Narrowleaf vetch	Spotted catsear
Beggarticks	Creeping jenny	Nettle	Spotted spurge
Betony, Florida	Cudweed	Orange hawkweed	Spurweed
Bindweed, field	Curly dock	Oriental cocklebur	Stinging nettle
Bird vetch	Daisy, English	Oxalis	Strawberry, India mock
Bitter wintercress	Daisy fleabane	Parsley-piert	Tall nettle
Bittercress, hairy	Daisy, oxeye	Parsnip	Tall vervain
Bitterweed	Dandelion	Pearlwort	Tansy ragwort
Black-eyed Susan	Dichondra	Pennycress	Tansy mustard
Black medic	Dogbane	Pennywort	Tanweed
Black mustard	Dogfennel	Peppergrass (Peppergrass)	Thistle
Blackseed plantain	Dollarweed	Pepperweed	Trailing crownvetch
Blessed thistle	Elderberry	Pigweed	Tumble mustard
Bloodflower milkweed	False dandelion	Pineywoods bedstraw	Tumble pigweed
Blue lettuce	False flax	Plains coreopsis (tickseed)	Velvetleaf
Blue vervain	False sunflower	Plantain	Venice mallow
Bracted plantain	Fiddleneck	Poison ivy	Virginia buttonweed
Bristly oxtongue	Florida pusley	Poison oak	Virginia creeper
Broadleaf dock	Frenchweed	Pokeweed	Virginia pepperweed
Broadleaf plantain	Galinsoga	Poorjoe	Water pennywort
Broomweed	Goldenrod	Prairie sunflower	Wavyleaf bullthistle
Buckhorn	Ground ivy	Prickly lettuce	Western clematis
Buckhorn plantain	Gumweed	Prickly sida	Western salsify
Bulbous buttercup	Hairy fleabane	Prostrate knotweed	White mustard
Bull thistle	Hawkweed	Prostrate pigweed	Wild aster
Bullnettle	Healall	Prostrate spurge	Wild buckwheat
Burclover	Heartleaf drymary	Prostrate vervain	Wild carrot
Burdock	Heathaster	Puncturevine	Wild four-o'clock
Burning nettle	Hedge bindweed	Purslane, common	Wild garlic
Burweed	Hedge mustard	Ragweed	Wild geranium
Buttercup	Henbit	Red sorrel	Wild lettuce
Buttonweed	Hoary cress	Redroot pigweed	Wild marigold
Canada thistle	Hoary plantain	Redstem filaree	Wild mustard
Carolina geranium	Hoary vervain	Rough cinquefoil	Wild onion
Carpetweed	Horsenettle	Rough fleabane	Wild parsnip
Catchweed bedstraw	Jimsonweed	Russian pigweed	Wild radish
Catnip	Knawel	Russian thistle	Wild rape
Catsear	Knotweed	Scarlet pimpernel	Wild strawberry
Chickweed, common	Kochia	Scotch thistle	Wild sweet potato
Chickweed, mouseear	Lambsquarters	Sheep sorrel	Wild vetch
Chicory	Lespedeza	Shepherdspurse	Woodsorrel
Cinquefoil	Mallow	Slender plantain	Woolly croton
Clover, crimson	Matchweed	Smallflower galinsoga	Woolly morningglory
Clover, hop	Mexicanweed	Smooth dock	Woolly plantain
Clover, red	Milk vetch	Smooth pigweed	Wormseed
Clover, strawberry	Morningglory	Sorrel	Yarrow
Clover, sweet	Mouseear hawkweed	Sowthistle	Yellow rocket
Clover, white	Mugwort	Spanishneedles	Yellowflower pepperweed
		Speedwell	and other broadleaf weeds

SPREADERS AND CALIBRATION:

1. Drop spreaders and rotary spreaders must be calibrated for uniform application of this product.
2. Close spreader opening (orifice).
3. Adjust spreader setting using the Spreader Suggestions chart

Application Rate = 3 lbs. of product per 1,000 square feet.

SUGGESTED SPREADER SETTINGS:

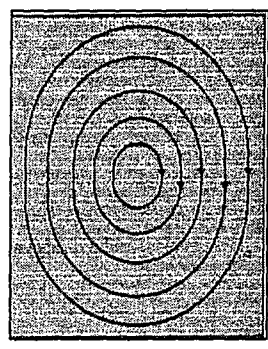
Centrifugal/Rotary Spreaders	Application Rate, 3 lbs./1,000 sq.ft.
Frank's Broadcast	2 ¼
Scotts Speedy Green	5
Radio Flyer #0047	8 ¼
True Temper Rotary CB2000	3 ¾
Earthway Rotary #2050SU	14 ½
Drop Spreaders	Application Rate, 3 lbs./1,000 sq.ft.
Frank's Drop	8 ¼
Greenview II	5 ½
True Temper CD20	4 - 4 ½
Scotts Accugreen AG1	5 ½
Earthway Drop #7300SU	13 ½

These spreader settings are approximate. Differences may occur due to the condition of spreader, speed at which applied and roughness of area treated. Check your spreader on 330 square feet and adjust to apply at the rate of 1 pound per 1,000 square feet.

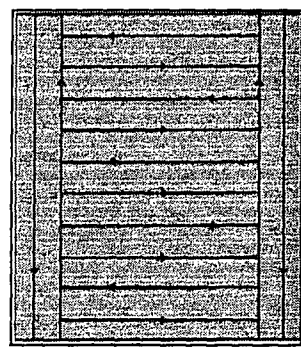
4. CALIBRATION INSTRUCTIONS:

- For 3.0 pounds of product per 1,000 square feet of turfgrass: Check your spreader on 330 square feet and adjust to apply at the rate of 1 pound of product per 330 square feet.
 - For 3.2 pounds of product per 1,000 square feet of turfgrass: Check your spreader on 310 square feet and adjust to apply at the rate of 1 pound of product per 310 square feet.
 - For 3.6 pounds of product per 1,000 square feet of turfgrass: Check your spreader on 275 square feet and adjust to apply at the rate of 1 pound of product per 275 square feet.
 - For 4.0 pounds of product per 1,000 square feet of turfgrass: Check your spreader on 250 square feet and adjust to apply at the rate of 1 pound of product per 250 square feet.
5. Fill spreader. Fill spreader on driveway or sidewalk to eliminate the chance of spillage on the lawn.
 6. Apply the product to lawn. Refer to the patch charts below:

Path A for centrifugal/rotary spreaders.



Path B for drop spreaders.

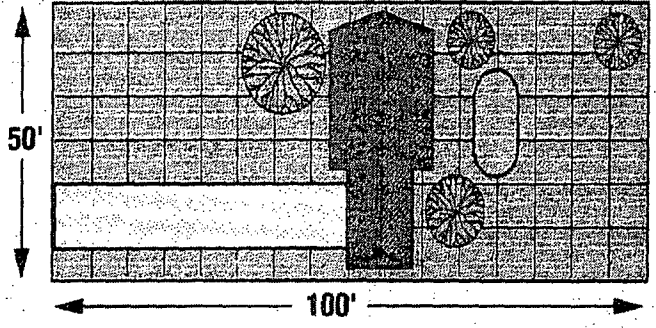


7. Close the spreader opening when turning to change directions or when stopping.
8. If using a centrifugal/rotary spreader, avoid spreading product into adjacent landscape, flowers or vegetable plantings.

NOTE: Supplemental applications of lawn fertilizer are needed to achieve a minimum 1 pound nitrogen per 1,000 square feet.

This ___ pound bag should cover approximately ___ square feet (___ ft. x ___ ft.) Refer to the table and picture to determine the size of your lawn.

COVERAGE CHART	
_____	Length
X _____	Width
= _____	Total Sq. Ft.
- _____	Non-Lawn Areas
= _____	Total Sq. Ft. Coverage you need.



24-4-8 GUARANTEED ANALYSIS	
Total Nitrogen (N).....	24%
Water Insoluble Nitrogen	5%
Available Phosphate (P ₂ O ₅).....	4%
Soluble Potash (K ₂ O).....	8%

Note to Supplemental Registrants: Fertilizer sources may vary in micronutrient composition, and iron may discolor or stain concrete. For fertilizers containing iron: Sweep all fertilizer from concrete surfaces immediately after application. Do not wash this product from concrete surfaces because fertilizers which contain iron may cause discoloration upon oxidation.

- WEEDS -		
Bedstraw	Knotweed	Ragweed
Black medic	Lambsquarters	Sheep sorrel
Buckhorn	Lespedeza	Shepherdspurse
Burdock	Mallow	Speedwell
Chickweed	Morningglory	Spurge
Chicory	Oxalis	Thistle
Clover	Peppergrass	Wild carrot
Dandelion	Pigweed	Wild garlic
Dock	Plantain	Wild lettuce
Ground ivy	Poison ivy	Wild onion
Healall	Poison oak	Yarrow
Henbit	Purslane	

LIMITED WARRANTY AND DISCLAIMER.

Read the entire Directions for Use, Conditions, Disclaimer of Warranties and Limitations of Liability before using this product. If terms are not acceptable, return the unopened product container at once to the seller.

By using this product, user or buyer accepts the following Conditions, Disclaimer of Warranties and Limitations of Liability.

The manufacturer warrants only that the chemical composition of this product conforms to the ingredient statement given on the label, and that the product is reasonably suited for the labeled use when applied according to the Directions for Use.

THE MANUFACTURER NEITHER MAKES NOR INTENDS ANY OTHER EXPRESS OR IMPLIED WARRANTIES, INCLUDING ANY WARRANTY OF MERCHANTABILITY OR FITNESS FOR A PARTICULAR PURPOSE, WHICH ARE EXPRESSLY DISCLAIMED. This limited warranty does not extend to the use of the product inconsistent with label instructions, warnings or cautions, or to use of the product under abnormal conditions such as drought, excessive rainfall, tornadoes, hurricanes, etc. These factors are beyond the control of the manufacturer or the seller. Any damages arising from a breach of the manufacturer's warranty shall be limited to direct damages, and shall not include indirect or consequential damages such as loss of profits or values, except as otherwise provided by law.

The terms of this Limited Warranty and Disclaimer cannot be varied by any written or verbal statements or agreements. No employee or agent of the seller is authorized to vary or exceed the terms of this Limited Warranty and Disclaimer in any manner.

Sublabel 2 - For Supplemental Registrations to Bayer Advanced LLC.

Distributor Company Number 72155

Distributor Product Label:

Bayer Advanced Lawn™ Triple Action Lawn Fertilizer Plus Weed Control^{II}

PDF File of proposed container label follows:

20/136

Covers 5,000 Square Feet

2 6" to bottom of handle



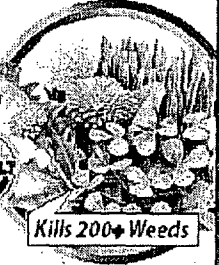
BAYER ADVANCED



TRIPLE ACTION

Lawn Fertilizer Plus Weed Control¹¹

KILLS DANDELION, CHICKWEED, CLOVER and MOST COMMON LAWN WEEDS



Actual results do vary. Always read label for full instructions and cautions.

- Triple Action Feeding works at every level
 - GRASS** Greener, Thicker Lawn
 - ROOTS** Stronger Root Systems
 - SOIL** Enriches & Fortifies Soil
- Feeds for 2 Months

30-3-4

READY-TO-SPREAD GRANULES

NET WT 16 LBS (7.2kg)

KEEP OUT OF REACH OF CHILDREN
CAUTION: See back panel for precautionary statements

THIS PRODUCT CONTAINS: 2,4-DICAS No. 9475-N 0.09%, Mecoprop-CAS No. 1518-77-1 0.11%, Dicamba-CAS No. 1518-08-9 0.005%, Other ingredients 99.79%, Total 100.0%.



TRIPLE ACTION
Lawn Fertilizer Plus Weed Control¹¹
Builds a Greener, Thicker Lawn-Guaranteed!



NET WT 16 LBS (7.2kg)

KEEP OUT OF REACH OF CHILDREN
CAUTION See back panel for precautionary statements

Active ingredients: 2,4-DICAS No. 9475-N 0.09%, Mecoprop-CAS No. 1518-77-1 0.11%, Dicamba-CAS No. 1518-08-9 0.005%, Other ingredients 99.79%, Total 100.0%.

THIS PRODUCT CONTAINS: 2,4-DICAS No. 9475-N 0.09%, Mecoprop-CAS No. 1518-77-1 0.11%, Dicamba-CAS No. 1518-08-9 0.005%, Other ingredients 99.79%, Total 100.0%.

7-29-04

22/36

APPENDIX

II. Previously Approved Fertilizer Grades:

- ◆ Fertilizer grades with nutrient contents expressed as the percentages of N, P₂O₅, and K₂O include the following:

10-6-4	16-3-5	20-10-0-(1)	23-7-7	25-4-8	28-3-7	30-4-8
10-16-20	16-6-9	20-10-5	24-3-7	26-3-3	28-3-8	32-4-8
10-18-10	18-3-5	21-5-7	24-4-8	26-3-5	29-3-4	
12-5-5	18-6-12	22-6-6	25-3-3	26-4-6	30-3-4	
15-5-10	20-4-6	22-7-7	25-3-5	26-4-13	30-3-5	
16-2-3	20-4-8	22-10-10	25-3-8	28-3-3	30-3-10	

The fertilizer grade guaranteed analyses may contain macronutrients and micronutrients. The nutrient contents expressed will vary among states, and the analyses will differ between supplemental registrations. The following guaranteed analyses presentations have previously been submitted as notifications:

10-16-20 GUARANTEED ANALYSIS	
Total Nitrogen (N).....	10%
6.0% Ammoniacal Nitrogen	
4.0% Urea Nitrogen	
Available Phosphate (P ₂ O ₅).....	16%
Soluble Potash (K ₂ O).....	20%
Magnesium (Mg).....	1.0%
0.1% Water Soluble Magnesium (Mg)	
Sulfur (S).....	2.0%
2.0% Combined Sulfur (S)	
Iron (Fe).....	1.0%
Manganese (Mn).....	0.5%
0.1% Water Soluble Manganese (Mn)	
Nutrient Sources: Urea, Ammonium Phosphate, Ammonium Sulfate, Muriate of Potash, Ferrous Sulfate, Manganese Oxide, Manganese Sulfate, Sulfate of Potash Magnesia and Magnesium oxide.	

29-3-4 GUARANTEED ANALYSIS	
Total Nitrogen (N).....	29%
1.1% Ammoniacal Nitrogen	
27.9% Urea Nitrogen	
Available Phosphate (P ₂ O ₅).....	3%
Soluble Potash (K ₂ O).....	4%
Derived from: Polymer-coated urea, urea, diammonium phosphate, and muriate of potash.	
*11.0% slowly available urea nitrogen from polymer coated urea.	
Chlorine (Cl), note more than.....	4.0%

10-18-10 GUARANTEED ANALYSIS	
Total Nitrogen (N).....	10%
10.0% Ammoniacal Nitrogen	
Available Phosphate (P ₂ O ₅).....	18%
Soluble Potash (K ₂ O).....	10%
Sulfur (S).....	2.0%
5.0% Combined Sulfur (S)	
Nutrient Sources: Ammonium Sulfate, Ammonium Phosphate and Muriate of Potash.	

26-4-6 GUARANTEED ANALYSIS	
Total Nitrogen (N).....	26%
1.8% Ammoniacal Nitrogen	
24.4% Urea Nitrogen	
Available Phosphoric Acid(P ₂ O ₅).....	4%
Soluble Potash (K ₂ O).....	6%
Boron (B).....	0.02%
Copper (Cu).....	0.05%
Iron (Fe).....	1.00%
Total Manganese (Mn).....	0.06%
Molybdenum (Mo).....	0.0005%
Zinc (Zn).....	0.05%
Primary Plant Food Sources: Sulfur coated urea, urea, diammonium phosphate, muriate of potash.	
Secondary Plant Food Sources: Fertilizer grade borate, sulfates and oxides of copper, sulfates and oxides of iron, oxides of manganese, fertilizer grade molybdate, and sulfates and oxides of zinc.	
*4.0% slowly available urea nitrogen from sulfur coated urea.	
Chlorine (Cl), not more than	4.8%

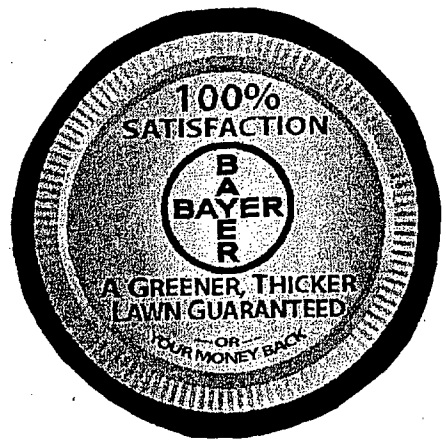
28-3-7 GUARANTEED ANALYSIS	
Total Nitrogen (N).....	28%
1.2% Ammoniacal Nitrogen	
26.8% Urea Nitrogen	
Available Phosphoric Acid(P ₂ O ₅).....	3%
Soluble Potash (K ₂ O).....	7%
Primary Plant Food Sources: Polymer-coated urea, urea, diammonium phosphate, muriate of potash	
*7.0% slowly available urea nitrogen from polymer-coated urea.	
Chlorine (Cl), not more than	6.4%

III. Advertising claims that may be presented on the retail containers:

- ◆ (Fifteen, Sixteen, Eighteen or Twenty) Pounds Covers Up To 5,000 Square Feet.
- ◆ Controls/Kills dandelion, chickweed, knotweed, plantain, henbit, spurge and many other broadleaf weeds; some of which are listed on the back panel
- ◆ An 18-6-12 fertilizer provides slow-release feeding to promote winter hardiness and drought tolerance in lawns.
- ◆ Feeds your lawn for up to 12 weeks.
- ◆ Controls/Kills over 30 varieties of weeds while feeding your lawn.
- ◆ Greens lawns and develops deep roots while controlling weeds.
- ◆ Bring out the best with the turf magic touch!
- ◆ Controls/Kills dandelion, plantain, and other weeds.
- ◆ Feeds the lawn with two (2) types of nitrogen and is pelleted for easy application.
- ◆ Controls (Number) weeds! (Listing of weeds may include the following.)

24/136

- Kills dandelion, chickweed, clover and most common lawn weeds.
- Triple Action Feeding works at every level.
 - Grass- Greener, Thicker lawn
 - Roots – Stronger Root System
 - Soil – Enriches & Fortifies Soil
- Builds a better lawn – Guaranteed
- Gordon's Trimec Weed & Feed 30 kills unsightly weeds such as dandelion, chickweed and clover while it nourishes your lawn. Its Triple Action formula contains slow-release nitrogen which continuously feeds the grass, roots and soil for up to two full months [all winter long]. And it's guaranteed not to burn. The result is a greener, thicker lawn [this Fall and quicker green-up next Spring]. You're just one application away from a better lawn. That's the [company name] Better Lawn Guarantee.
- Triple Action Feeding works at every level for a Deep-Down Green!
- Why is Triple Action better? By feeding at all levels, your lawn receives the primary nutrients it needs to thrive. This ensures thicker, greener grass, stronger root system, and richer soil – the key to building a lush lawn that lasts.
- Grass: Builds thicker, greener grass and enhances overall appearance.
- Roots: Builds stronger, deeper root systems which transport nutrients from the soil to the grass to help lawn withstand heat-stress and drought.
- Soil: Enriches and fortifies your soil. Rich, fertile soil provides a foundation for establishing roots and replenishes vital primary nutrients.
- For questions or comments, call toll-free 1-877-bayerAL (1-877-229-3725)
- Made in the U.S.A.
- Kills weeds and builds a thick, green Fall lawn.
- Nourishes all Winter for a quick Spring green-up.



25/36

GORDON'S TRIMEC® WEED & FEED 30 24-4-8

**Sublabel 3: For use by supplemental distributor for
Bayer Advanced Triple Action Winterizer Fertilizer Plus
Weed Control "**

ACTIVE INGREDIENTS:

2,4-D (CAS No. 94-75-7)	0.69%
Mecoprop-p (CAS No. 16484-77-8)	0.15%
Dicamba (CAS No. 1918-00-9)	0.06%
INERT INGREDIENTS:	99.10%
TOTAL	100.00%

THIS PRODUCT CONTAINS:

- 13.8 lbs. 2,4-D acid equivalent per ton
- 3.0 lbs. Mecoprop-p acid equivalent per ton
- 1.2 lbs. Dicamba acid equivalent per ton
- Isomer Specific by AOAC Methods.
- Contains the single isomer form of Mecoprop-p.
- TRIMEC® is a registered trademark of PBI/GORDON CORPORATION

KEEP OUT OF REACH OF CHILDREN

CAUTION

See back panel for Precautionary Statements.

NET WEIGHT: (15, 16, 18 or 20) POUNDS

575 AP041607
EPA REG. NO. 2217-579
EPA EST. NO. 2217-KS-X
MANUFACTURED BY:



Telephone: 1-800-821-7925

26/36



READ THE ENTIRE LABEL FIRST. OBSERVE ALL PRECAUTIONS AND FOLLOW DIRECTIONS CAREFULLY.

PRECAUTIONARY STATEMENTS

Hazards to Humans & Domestic Animals

CAUTION: Harmful if swallowed. Do not inhale dust. Do not allow contact with skin, eyes or clothing. When using this product, wear long-sleeved shirt, long pants, socks and shoes.

After using this product, remove clothing and launder separately before reuse, and promptly and thoroughly wash hands and exposed skin with soap and water.

First Aid

If in eyes:	<ul style="list-style-type: none"> • Hold eye open and rinse slowly and gently with water for 15 - 20 minutes. Remove contact lenses, if present, after the first 5 minutes, then continue rinsing eye. • Call a poison control center or doctor for treatment advice.
If on skin or clothing:	<ul style="list-style-type: none"> • Take off contaminated clothing. • Rinse skin immediately with plenty of water for 15 - 20 minutes. • Call a poison control center or doctor for treatment advice.
If swallowed:	<ul style="list-style-type: none"> • Call a poison control center or doctor immediately for treatment advice. • Have person sip a glass of water if able to swallow. • Do not induce vomiting unless told to do so by a poison control center or doctor. • Do not give anything by mouth to an unconscious person.
<p>Have the product container or label with you when calling a poison control center or doctor or going for treatment.</p> <p>You may also call toll-free, 1-877-800-5556 for emergency medical treatment information.</p>	

ENVIRONMENTAL HAZARDS:

Drift or runoff may adversely affect nontarget plants. Do not apply directly to water. Do not contaminate water when disposing of equipment washwater. Do not apply when weather conditions favor drift from target area.

DIRECTIONS FOR USE

It is a violation of Federal law to use this product in a manner inconsistent with its labeling.

Do not allow people (other than applicator) or pets on treatment area during application. Do not enter treatment area until dust has settled.

STORAGE AND DISPOSAL

STORAGE: Store in original container and keep any bags containing unused product in a locked storage area inaccessible to children and domestic animals. Do not store near food or feedstuffs.

DISPOSAL:

If Empty—Do not reuse this container. Place in trash or offer for recycling if available.

If Partly Filled—Call your local solid waste agency or toll free number (1-800-XXX-XXXX) for disposal instructions. Never place unused product down any indoor or outdoor drain.

27/
36

USE PRECAUTIONS:

Do not use on dichondra, carpetgrass, closely mowed bentgrass putting greens or St. Augustinegrass. Do not use this product where desirable clovers are present or allow the material to drift onto flowers, vegetables or ornamental shrubbery. Do not spread over exposed roots of trees and ornamentals. Do not exceed specified dosages for any area; be particularly careful within dripline of tree and other ornamental species. Apply when the air is calm. Application of this product to newly seeded areas should be delayed until the third mowing. Do not contaminate domestic or irrigation waters.

INSTRUCTIONS:

Gordon's Trimec® Weed & Feed 30 contains Trimec® herbicide. Trimec® controls a wide range of lawn weeds, including dandelion, chickweed, plantain, henbit, spurge and many others commonly found in home lawns. In addition, a (X-X-X analysis of fertilizer grade) fertilizer provides a supply of plant food. Possible retreatment may be necessary if (a) lawn is heavily overrun by weeds or, (b) if adverse low moisture conditions prevail and weeds are in a state of poor growth. A second application may be made in approximately 30 days. Treated areas may be seeded 3 to 4 weeks after application.

Note to Supplemental Registrants: Guarantees for plant nutrients other than nitrogen, phosphorous, and potassium may be permitted or required by regulation by the _____. The guarantees for such other nutrients shall be expressed in the form of the element. The source (oxides, salts, chelates, etc.) of such other nutrients may be required to be stated and may be included on the label.

For state registrations in Kentucky, add the following paragraph:

A lawn typically will utilize 1 to 4 pounds of nitrogen per 1,000 square feet per growing season. When used as directed, this product will supplement your regular fertilizer program by providing (*Number of pounds) of nitrogen per 1,000 square feet. Please consult your local extension office for questions regarding a regular fertilizer program suitable for your geographic region.

Labeling Requirements:

- All fertilizer products distributed in Washington at a minimum, must have the following labeling statement: *"This product has been registered with the Washington State Department of Agriculture. When applied as directed, this fertilizer meets the Washington standards for arsenic, cadmium, cobalt, mercury, molybdenum, lead, nickel, selenium, and zinc. You have the right to receive specific information about Washington standards from the distributor of this product."*
- After July 1, 1999, the label must also state: *"Information received by the Washington State Department of Agriculture regarding the components in this product is available on the internet at <http://www.wa.gov/agr/>."*
- -OR- Information regarding the contents and levels of metals in this product is available on the internet at <http://www.regulatory-info-ba.com>
- -OR- Information regarding the contents and levels of metals in this product is available on the Internet as <http://www.aapfco.org/metals.htm>.

The maximum application rate to turf is 1.2 pounds 2,4-D acid equivalent per acre per application per site. The maximum number of broadcast applications per treatment site is 2 per year.

1. Mow lawn to normal height 1 to 2 days before application.
2. Water lawn thoroughly at least 1 day before application to sustain moisture until the next watering (see step 4).
3. Apply when weeds are young and actively growing, preferably in the morning when the dew is on the grass. If grass is not moist at time of application, sprinkle lightly with water to hold the material and prevent dust drift onto nontarget plants.
4. Do not wash from weed leaves for 1 to 2 days after application. At this time a thorough watering should be made.

- WEEDS -

Annual yellow sweetclover	Cockle	Musk thistle	Spiny amaranth
Aster	Cocklebur	Mustard	Spiny cocklebur
Austrian fieldcress	Common mullein	Narrowleaf plantain	Spiny sowthistle
Bedstraw	Creeping Charlie	Narrowleaf vetch	Spotted catsear
Beggarticks	Creeping jenny	Nettle	Spotted spurge
Betony, Florida	Cudweed	Orange hawkweed	Spurweed
Bindweed, field	Curly dock	Oriental cocklebur	Stinging nettle
Bird vetch	Daisy, English	Oxalis	Strawberry, India mock
Bitter wintercress	Daisy fleabane	Parsley-piert	Tall nettle
Bittercress, hairy	Daisy, oxeye	Parsnip	Tall vervain
Bitterweed	Dandelion	Pearlwort	Tansy ragwort
Black-eyed Susan	Dichondra	Pennycress	Tansy mustard
Black medic	Dogbane	Pennywort	Tanweed
Black mustard	Dogfennel	Peppergrass (Peppergrass)	Thistle
Blackseed plantain	Dollarweed	Pepperweed	Trailing crownvetch
Blessed thistle	Elderberry	Pigweed	Tumble mustard
Bloodflower milkweed	False dandelion	Pinewoods bedstraw	Tumble pigweed
Blue lettuce	False flax	Plains coreopsis (tickseed)	Velvetleaf
Blue vervain	False sunflower	Plantain	Venice mallow
Bracted plantain	Fiddleneck	Poison ivy	Virginia buttonweed
Bristly oxtongue	Florida pusley	Poison oak	Virginia creeper
Broadleaf dock	Frenchweed	Pokeweed	Virginia pepperweed
Broadleaf plantain	Galinsoga	Poorjoe	Water pennywort
Broomweed	Goldenrod	Prairie sunflower	Wavyleaf bullthistle
Buckhorn	Ground ivy	Prickly lettuce	Western clematis
Buckhorn plantain	Gumweed	Prickly sida	Western salsify
Bulbous buttercup	Hairy fleabane	Prostrate knotweed	White mustard
Bull thistle	Hawkweed	Prostrate pigweed	Wild aster
Bullnettle	Healall	Prostrate spurge	Wild buckwheat
Burclover	Heartleaf drymary	Prostrate vervain	Wild carrot
Burdock	Heathaster	Puncturevine	Wild four-o'clock
Burning nettle	Hedge bindweed	Purslane, common	Wild garlic
Burweed	Hedge mustard	Ragweed	Wild geranium
Buttercup	Henbit	Red sorrel	Wild lettuce
Buttonweed	Hoary cress	Redroot pigweed	Wild marigold
Canada thistle	Hoary plantain	Redstem filaree	Wild mustard
Carolina geranium	Hoary vervain	Rough cinquefoil	Wild onion
Carpentweed	Horsenettle	Rough fleabane	Wild parsnip
Catchweed bedstraw	Jimsonweed	Russian pigweed	Wild radish
Catnip	Knawel	Russian thistle	Wild rape
Catsear	Knotweed	Scarlet pimpernel	Wild strawberry
Chickweed, common	Kochia	Scotch thistle	Wild sweet potato
Chickweed, mouseear	Lambsquarters	Sheep sorrel	Wild vetch
Chicory	Lespedeza	Shepherdspurse	Woodsorrel
Cinquefoil	Mallow	Slender plantain	Woolly croton
Clover, crimson	Matchweed	Smallflower galinsoga	Woolly morningglory
Clover, hop	Mexicanweed	Smooth dock	Woolly plantain
Clover, red	Milk vetch	Smooth pigweed	Wormseed
Clover, strawberry	Morningglory	Sorrel	Yarrow
Clover, sweet	Mouseear hawkweed	Sowthistle	Yellow rocket
Clover, white	Mugwort	Spanishneedles	Yellowflower pepperweed
		Speedwell	and other broadleaf weeds

29/36

SPREADERS AND CALIBRATION:

1. Drop spreaders and rotary spreaders must be calibrated for uniform application of this product.
2. Close spreader opening (orifice).
3. Adjust spreader setting using the Spreader Suggestions chart

Application Rate = 3 lbs. of product per 1,000 square feet.

SUGGESTED SPREADER SETTINGS:

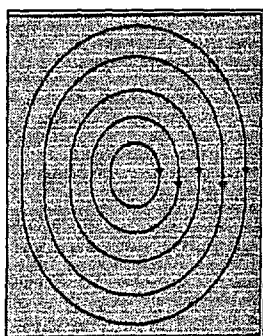
Centrifugal/Rotary Spreaders	Application Rate, 3 lbs./1,000 sq.ft.
Frank's Broadcast	2 1/4
Scotts Speedy Green	5
Radio Flyer #0047	8 1/4
True Temper Rotary CB2000	3 3/4
Earthway Rotary #2050SU	14 1/2
Drop Spreaders	Application Rate, 3 lbs./1,000 sq.ft.
Frank's Drop	8 1/4
Greenview II	5 1/2
True Temper CD20	4 - 4 1/2
Scotts Accugreen AG1	5 1/2
Earthway Drop #7300SU	13 1/2

These spreader settings are approximate. Differences may occur due to the condition of spreader, speed at which applied and roughness of area treated. Check your spreader on 330 square feet and adjust to apply at the rate of 1 pound per 1,000 square feet.

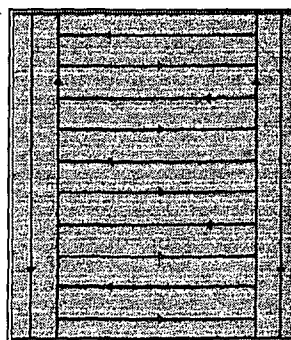
4. CALIBRATION INSTRUCTIONS:

- For 3.0 pounds of product per 1,000 square feet of turfgrass: Check your spreader on 330 square feet and adjust to apply at the rate of 1 pound of product per 330 square feet.
 - For 3.2 pounds of product per 1,000 square feet of turfgrass: Check your spreader on 310 square feet and adjust to apply at the rate of 1 pound of product per 310 square feet.
 - For 3.6 pounds of product per 1,000 square feet of turfgrass: Check your spreader on 275 square feet and adjust to apply at the rate of 1 pound of product per 275 square feet.
 - For 4.0 pounds of product per 1,000 square feet of turfgrass: Check your spreader on 250 square feet and adjust to apply at the rate of 1 pound of product per 250 square feet.
5. Fill spreader. Fill spreader on driveway or sidewalk to eliminate the chance of spillage on the lawn.
6. Apply the product to lawn. Refer to the patch charts below:

Path A for centrifugal/rotary spreaders.



Path B for drop spreaders.

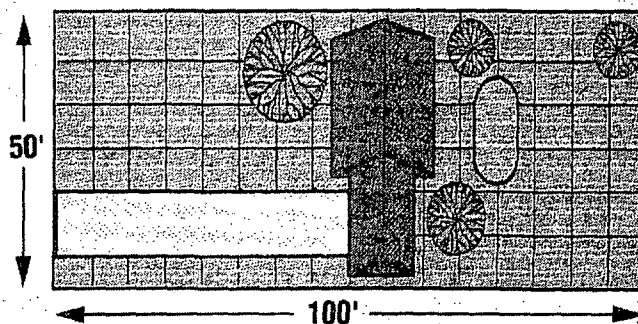


7. Close the spreader openings when turning to change directions or when stopping.
8. If using a centrifugal/rotary spreader, avoid spreading product into adjacent landscape; flowers or vegetable plantings.

NOTE: Supplemental applications of lawn fertilizer are needed to achieve a minimum 1 pound nitrogen per 1,000 square feet.

This ___ pound bag should cover approximately ___ square feet (___ ft. x ___ ft.) Refer to the table and picture to determine the size of your lawn.

COVERAGE CHART	
_____	Length
X _____	Width
= _____	Total Sq. Ft.
- _____	Non-Lawn Areas
= _____	Total Sq. Ft. Coverage you need.



24-4-8 GUARANTEED ANALYSIS	
Total Nitrogen (N).....	24%
Water Insoluble Nitrogen	5%
Available Phosphate (P ₂ O ₅).....	4%
Soluble Potash (K ₂ O).....	8%

31/36

Note to Supplemental Registrants: Fertilizer sources may vary in micronutrient composition, and iron may discolor or stain concrete. For fertilizers containing iron: Sweep all fertilizer from concrete surfaces immediately after application. Do not wash this product from concrete surfaces because fertilizers which contain iron may cause discoloration upon oxidation.

- WEEDS -		
Bedstraw	Knotweed	Ragweed
Black medic	Lambsquarters	Sheep sorrel
Buckhorn	Lespedeza	Shepherdspurse
Burdock	Mallow	Speedwell
Chickweed	Morningglory	Spurge
Chicory	Oxalis	Thistle
Clover	Peppergrass	Wild carrot
Dandelion	Pigweed	Wild garlic
Dock	Plantain	Wild lettuce
Ground ivy	Poison ivy	Wild onion
Healall	Poison oak	Yarrow
Henbit	Purslane	

LIMITED WARRANTY AND DISCLAIMER.

Read the entire Directions for Use, Conditions, Disclaimer of Warranties and Limitations of Liability before using this product. If terms are not acceptable, return the unopened product container at once to the seller.

By using this product, user or buyer accepts the following Conditions, Disclaimer of Warranties and Limitations of Liability.

The manufacturer warrants only that the chemical composition of this product conforms to the ingredient statement given on the label, and that the product is reasonably suited for the labeled use when applied according to the Directions for Use.

THE MANUFACTURER NEITHER MAKES NOR INTENDS ANY OTHER EXPRESS OR IMPLIED WARRANTIES, INCLUDING ANY WARRANTY OF MERCHANTABILITY OR FITNESS FOR A PARTICULAR PURPOSE, WHICH ARE EXPRESSLY DISCLAIMED. This limited warranty does not extend to the use of the product inconsistent with label instructions, warnings or cautions, or to use of the product under abnormal conditions such as drought, excessive rainfall, tornadoes, hurricanes, etc. These factors are beyond the control of the manufacturer or the seller. Any damages arising from a breach of the manufacturer's warranty shall be limited to direct damages, and shall not include indirect or consequential damages such as loss of profits or values, except as otherwise provided by law.

The terms of this Limited Warranty and Disclaimer cannot be varied by any written or verbal statements or agreements. No employee or agent of the seller is authorized to vary or exceed the terms of this Limited Warranty and Disclaimer in any manner.

Sublabel 3 - For Supplemental Registrations to Bayer Advanced LLC.

Distributor Company Number 72155

Distributor Product Label:

Bayer Advanced™ Triple Action Winterizer Fertilizer plus Weed Control^{II}

PDF File of proposed container label follows:

82/36

Covers 5,000 Square Feet



BAYER ADVANCED



TRIPLE ACTION

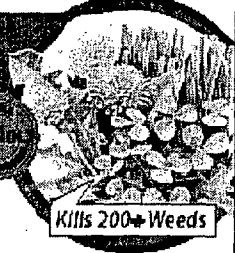
Winterizer Fertilizer plus Weed ControlTM

**KILLS WEEDS and BUILDS A THICK,
GREEN FALL LAWN**

Mata malezas y construye un césped grisio y verde para el otoño

- Nourishes all Winter for a quick Spring green-up
- Triple Action Feeding works at every level

- GRASS** Greener, Thicker Lawn
- ROOTS** Stronger Root Systems
- SOIL** Enriches & Fortifies Soil



22-3-14

READY-TO-SPREAD GRANULES



TRIPLE ACTION
Winterizer
Fertilizer plus Weed ControlTM
Builds a Greener, Thicker Lawn-Guaranteed!

NET WT 18 LBS (8.1kg)

KEEP OUT OF REACH OF CHILDREN
CAUTION See back panel for
precautionary statements

Active ingredients:	
2,4-D (CAS No. 11-75-7)	0.6%
Mecoprop-p (CAS No. 11-09-77-0)	1.15%
Other ingredients	98.17%
Total	100.0%

THIS PRODUCT CONTAINS:
13.81 lbs. (1.0) and 1.00 lb. per 1.0
1.0 lb. Mecoprop-p acid equivalent per 1.0
1.2 lbs. 2,4-D acid equivalent per 1.0
Formulation Specific by AOC Methods
Contains the single source form of Mecoprop-p.

7-29-04

APPENDIX

III. Previously Approved Fertilizer Grades:

- ◆ Fertilizer grades with nutrient contents expressed as the percentages of N, P₂O₅, and K₂O include the following:

10-6-4	16-3-5	20-10-0-(1)	23-7-7	25-4-8	28-37-	30-4-8
10-16-20	16-6-9	20-10-5	24-3-7	26-3-3	28-3-8	32-4-8
10-18-10	18-3-5	21-5-7	24-4-8	26-3-5	29-3-4	
12-5-5	18-6-12	22-6-6	25-3-3	26-4-6	30-3-4	
15-5-10	20-4-6	22-7-7	25-3-5	26-4-13	30-3-5	
16-2-3	20-4-8	22-10-10	25-3-8	28-3-3	30-3-10	

The fertilizer grade guaranteed analyses may contain macronutrients and micronutrients. The nutrient contents expressed will vary among states, and the analyses will differ between supplemental registrations. The following guaranteed analyses presentations have previously been submitted as notifications:

10-16-20 GUARANTEED ANALYSIS	
Total Nitrogen (N).....	10%
6.0% Ammoniacal Nitrogen	
4.0% Urea Nitrogen	
Available Phosphate (P ₂ O ₅).....	16%
Soluble Potash (K ₂ O).....	20%
Magnesium (Mg).....	1.0%
0.1% Water Soluble Magnesium (Mg)	
Sulfur (S).....	2.0%
2.0% Combined Sulfur (S)	
Iron (Fe).....	1.0%
Manganese (Mn).....	0.5%
0.1% Water Soluble Manganese (Mn)	
Nutrient Sources: Urea, Ammonium Phosphate, Ammonium Sulfate, Muriate of Potash, Ferrous Sulfate, Manganese Oxide, Manganese Sulfate, Sulfate of Potash Magnesia and Magnesium oxide.	

29-3-4 GUARANTEED ANALYSIS	
Total Nitrogen (N).....	29%
1.1% Ammoniacal Nitrogen	
27.9% Urea Nitrogen	
Available Phosphate (P ₂ O ₅).....	3%
Soluble Potash (K ₂ O).....	4%
Derived from: Polymer-coated urea, urea, diammonium phosphate, and muriate of potash.	
*11.0% slowly available urea nitrogen from polymer coated urea.	
Chlorine (Cl), note more than.....	4.0%

10-18-10 GUARANTEED ANALYSIS	
Total Nitrogen (N).....	10%
10.0% Ammoniacal Nitrogen	
Available Phosphate (P ₂ O ₅).....	18%
Soluble Potash (K ₂ O).....	10%
Sulfur (S).....	2.0%
5.0% Combined Sulfur (S)	
Nutrient Sources: Ammonium Sulfate, Ammonium Phosphate and Muriate of Potash.	

35/36

26-4-6 GUARANTEED ANALYSIS	
Total Nitrogen (N).....	26%
1.8% Ammoniacal Nitrogen	
24.4% Urea Nitrogen	
Available Phosphoric Acid(P ₂ O ₅).....	4%
Soluble Potash (K ₂ O).....	6%
Boron (B).....	0.02%
Copper (Cu).....	0.05%
Iron (Fe).....	1.00%
Total Manganese (Mn).....	0.06%
Molybdenum (Mo).....	0.0005%
Zinc (Zn).....	0.05%
Primary Plant Food Sources: Sulfur coated urea, urea, diammonium phosphate, muriate of potash.	
Secondary Plant Food Sources: Fertilizer grade borate, sulfates and oxides of copper, sulfates and oxides of iron, oxides of manganese, fertilizer grade molybdate, and sulfates and oxides of zinc.	
*4.0% slowly available urea nitrogen from sulfur coated urea.	
Chlorine (Cl), not more than	4.8%

28-3-7 GUARANTEED ANALYSIS	
Total Nitrogen (N).....	28%
1.2% Ammoniacal Nitrogen	
26.8% Urea Nitrogen	
Available Phosphoric Acid(P ₂ O ₅).....	3%
Soluble Potash (K ₂ O).....	7%
Primary Plant Food Sources: Polymer-coated urea, urea, diammonium phosphate, muriate of potash	
*7.0% slowly available urea nitrogen from polymer-coated urea.	
Chlorine (Cl), not more than	6.4%

IV. Advertising claims that may be presented on the retail containers:

- ◆ (Fifteen, Sixteen, Eighteen or Twenty) Pounds Covers Up To 5,000 Square Feet.
- ◆ Controls/Kills dandelion, chickweed, knotweed, plantain, henbit, spurge and many other broadleaf weeds; some of which are listed on the back panel
- ◆ An 18-6-12 fertilizer provides slow-release feeding to promote winter hardiness and drought tolerance in lawns.
- ◆ Feeds your lawn for up to 12 weeks.
- ◆ Controls/Kills over 30 varieties of weeds while feeding your lawn.
- ◆ Greens lawns and develops deep roots while controlling weeds.
- ◆ Bring out the best with the turf magic touch!
- ◆ Controls/Kills dandelion, plantain, and other weeds.
- ◆ Feeds the lawn with two (2) types of nitrogen and is pelleted for easy application.
- ◆ Controls (Number) weeds! (Listing of weeds may include the following.)

36/36

- Kills dandelion, chickweed, clover and most common lawn weeds.
- Triple Action Feeding works at every level.
 - Grass- Greener, Thicker lawn
 - Roots – Stronger Root System
 - Soil – Enriches & Fortifies Soil
- Builds a better lawn – Guaranteed
- Gordon's Trimec Weed & Feed 30 kills unsightly weeds such as dandelion, chickweed and clover while it nourishes your lawn. Its Triple Action formula contains slow-release nitrogen which continuously feeds the grass, roots and soil for up to two full months [all winter long]. And it's guaranteed not to burn. The result is a greener, thicker lawn [this Fall and quicker green-up next Spring]. You're just one application away from a better lawn. That's the [company name] Better Lawn Guarantee.
- Triple Action Feeding works at every level for a Deep-Down Green!
- Why is Triple Action better? By feeding at all levels, your lawn receives the primary nutrients it needs to thrive. This ensures thicker, greener grass, stronger root system, and richer soil – the key to building a lush lawn that lasts.
- Grass: Builds thicker, greener grass and enhances overall appearance.
- Roots: Builds stronger, deeper root systems which transport nutrients from the soil to the grass to help lawn withstand heat-stress and drought.
- Soil: Enriches and fortifies your soil. Rich, fertile soil provides a foundation for establishing roots and replenishes vital primary nutrients.
- For questions or comments, call toll-free 1-877-bayerAL (1-877-229-3725)
- Made in the U.S.A.
- Kills weeds and builds a thick, green Fall lawn.
- Nourishes all Winter for a quick Spring green-up.

