

GORDON'S TRIMEC® WEED & FEED 30 24-4-8

ACTIVE INGREDIENTS:	
2,4-D (CAS No. 94-75-7).....	0.69%
Mecoprop-p (CAS No. 16484-77-8).....	0.15%
Dicamba (CAS No. 1918-00-9).....	0.06%
OTHER INGREDIENTS:.....	99.10%
TOTAL	100.00%

THIS PRODUCT CONTAINS:
 13.8 lbs. 2,4-D acid equivalent per ton
 3.0 lbs. Mecoprop-p acid equivalent per ton
 1.2 lbs. Dicamba acid equivalent per ton
 Isomer Specific by AOAC Methods.
 Contains the single isomer form of Mecoprop-p.
 TRIMEC® is a registered trademark of PBI/GORDON CORPORATION

KEEP OUT OF REACH OF CHILDREN

CAUTION

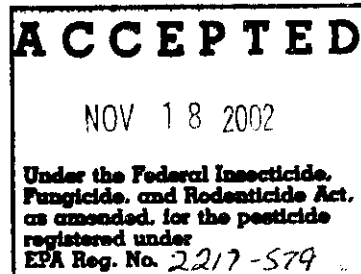
See back panel for Precautionary Statements.

NET WEIGHT (15, 16, 18 or 20) POUNDS

575 AP-----
 EPA REG. NO. 2217-579 Amend
 EPA EST. NO. 2217-KS-X
 MANUFACTURED BY:



Telephone: 1-800-821-7925



2/15



READ THE ENTIRE LABEL FIRST. OBSERVE ALL PRECAUTIONS AND FOLLOW DIRECTIONS CAREFULLY.

PRECAUTIONARY STATEMENTS

Hazards to Humans & Domestic Animals

CAUTION: Harmful if swallowed. Do not inhale dust. Do not allow contact with skin, eyes or clothing. When using this product, wear long-sleeved shirt, long pants, socks and shoes.

After using this product, remove clothing and launder separately before reuse, and promptly and thoroughly wash hands and exposed skin with soap and water.

First Aid

If in eyes:	<ul style="list-style-type: none"> • Hold eye open and rinse slowly and gently with water for 15 - 20 minutes. Remove contact lenses, if present, after the first 5 minutes, then continue rinsing eye. • Call a poison control center or doctor for treatment advice.
If on skin or clothing:	<ul style="list-style-type: none"> • Take off contaminated clothing. • Rinse skin immediately with plenty of water for 15 - 20 minutes. • Call a poison control center or doctor for treatment advice.
If swallowed:	<ul style="list-style-type: none"> • Call a poison control center or doctor immediately for treatment advice. • Have person sip a glass of water if able to swallow. • Do not induce vomiting unless told to do so by a poison control center or doctor. • Do not give anything by mouth to an unconscious person.
<p>Have the product container or label with you when calling a poison control center or doctor or going for treatment.</p> <p>You may also call toll-free, 1-877-800-5556 for emergency medical treatment information.</p>	

ENVIRONMENTAL HAZARDS:

Drift or runoff may adversely affect nontarget plants. Do not apply directly to water. Do not contaminate water when disposing of equipment washwater. Do not apply when weather conditions favor drift from target area.

Sublabel 1:

DIRECTIONS FOR USE

It is a violation of Federal law to use this product in a manner inconsistent with its labeling.

Do not allow people (other than applicator) or pets on treatment area during application. Do not enter treatment area until spray has dried or dust has settled.

STORAGE AND DISPOSAL

STORAGE: Store in original container and keep any bags containing unused product in a locked storage area inaccessible to children and domestic animals. Do not store near food or feedstuffs.

DISPOSAL:

If Empty—Do not reuse this container. Place in trash or offer for recycling if available.

If Partly Filled—Call your local solid waste agency or toll free number (1-800 CLEANUP) for disposal instructions. Never place unused product down any indoor or outdoor drain.

3/15

USE PRECAUTIONS:

Do not use on dichondra, carpetgrass, closely mowed bentgrass putting greens or St. Augustinegrass. Do not use this product where desirable clovers are present or allow the material to drift onto flowers, vegetables or ornamental shrubbery. Do not spread over exposed roots of trees and ornamentals. Do not exceed specified dosages for any area; be particularly careful within dripline of tree and other ornamental species. Apply when the air is calm. Application of this product to newly seeded areas should be delayed until the third mowing. Do not contaminate domestic or irrigation waters.

INSTRUCTIONS:

Gordon's Trimec® Weed & Feed 30 contains Trimec® herbicide. Trimec® controls a wide range of lawn weeds, including dandelion, chickweed, plantain, henbit, spurge and many others commonly found in home lawns. In addition, a (X-X-X analysis of fertilizer grade) fertilizer provides a supply of plant food. Possible retreatment may be necessary if (a) lawn is heavily overrun by weeds or, (b) if adverse low moisture conditions prevail and weeds are in a state of poor growth. A second application may be made in approximately 30 days. Treated areas may be seeded 3 to 4 weeks after application.

Note to Supplemental Registrants: Guarantees for plant nutrients other than nitrogen, phosphorous, and potassium may be permitted or required by regulation by the _____. The guarantees for such other nutrients shall be expressed in the form of the element. The source (oxides, salts, chelates, etc.) of such other nutrients may be required to be stated and may be included on the label.

For state registrations in Kentucky, add the following paragraph:

A lawn typically will utilize 1 to 4 pounds of nitrogen per 1,000 square feet per growing season. When used as directed, this product will supplement your regular fertilizer program by providing (Number of pounds) of nitrogen per 1,000 square feet. Please consult your local extension office for questions regarding a regular fertilizer program suitable for your geographic region.

Labeling Requirements:

- All fertilizer products distributed in Washington at a minimum, must have the following labeling statement: *"This product has been registered with the Washington State Department of Agriculture. When applied as directed, this fertilizer meets the Washington standards for arsenic, cadmium, cobalt, mercury, molybdenum, lead, nickel, selenium, and zinc. You have the right to receive specific information about Washington standards from the distributor of this product."*
- After July 1, 1999, the label must also state: *"Information received by the Washington State Department of Agriculture regarding the components in this product is available on the internet at <http://www.wa.gov/agr/>."*
- **-OR-** information regarding the contents and levels of metals in this product is available on the internet at <http://www.regulatory-info-ba.com>

The maximum application rate to turf is 1.2 pounds 2,4-D acid equivalent per acre per application per site. The maximum number of broadcast applications per treatment site is 2 per year.

1. Mow lawn to normal height 1 to 2 days before application.
2. Water lawn thoroughly at least 1 day before application to sustain moisture until the next watering (see step 4).
3. Apply when weeds are young and actively growing, preferably in the morning when the dew is on the grass. If grass is not moist at time of application, sprinkle lightly with water to hold the material and prevent dust drift onto nontarget plants.
4. Do not wash from weed leaves for 1 to 2 days after application. At this time a thorough watering should be made.



- WEEDS -

Annual yellow sweetclover	Cockle	Musk thistle	Spiny amaranth
Aster	Cocklebur	Mustard	Spiny cocklebur
Austrian fieldcress	Common mullein	Narrowleaf plantain	Spiny sowthistle
Bedstraw	Creeping Charlie		
Beggarticks	Creeping jenny	Narrowleaf vetch	Spotted catsear
Betony, Florida	Cudweed	Nettle	Spotted spurge
Bindweed, field	Curly dock	Orange hawkweed	Spurweed
Bird vetch	Daisy, English	Oriental cocklebur	Stinging nettle
Bitter wintercress	Daisy fleabane	Oxalis	Strawberry, India mock
Bittercress, hairy	Daisy, oxeye	Parsley-piert	Tall nettle
Bitterweed	Dandelion	Parsnip	Tall vervain
Black-eyed Susan	Dichondra	Pearlwort	Tansy ragwort
Black medic	Dogbane	Pennycress	Tansy mustard
Black mustard	Dogfennel	Pennywort	Tanweed
Blackseed plantain	Dollarweed	Peppergrass (Peppergrass)	Thistle
Blessed thistle	Elderberry	Pepperweed	Trailing crownvetch
Bloodflower milkweed	False dandelion	Pigweed	Tumble mustard
Blue lettuce	False flax	Pineywoods bedstraw	Tumble pigweed
Blue vervain	False sunflower	Plains coreopsis (tickseed)	Velvetleaf
Bracted plantain	Fiddleneck	Plantain	Venice mallow
Brassbuttons	Florida pusley	Poison ivy	Virginia buttonweed
Bristly oxtongue	Frenchweed	Poison oak	Virginia creeper
Broadleaf dock	Galinsoga	Pokeweed	Virginia pepperweed
Broadleaf plantain	Goathead	Poorjoe	Water pennywort
Broomweed	Goldenrod	Prairie sunflower	Wavyleaf bullthistle
Buckhorn	Ground ivy	Prickly lettuce	Western clematis
Buckhorn plantain	Gumweed	Prickly sida	Western salsify
Bulbous buttercup	Hairy fleabane	Prostrate knotweed	White mustard
Bull thistle	Hawkweed	Prostrate pigweed	Wild aster
Bullnettle	Healall	Prostrate spurge	Wild buckwheat
Burclover	Heartleaf drymary	Prostrate vervain	Wild carrot
Burdock	Heathaster	Puncturevine	Wild four-o'clock
Burning nettle	Hedge bindweed	Purslane, common	Wild garlic
Burweed	Hedge mustard	Ragweed	Wild geranium
Buttercup	Hemp	Red sorrel	Wild lettuce
Buttonweed	Henbit	Redroot pigweed	Wild marigold
Canada thistle	Hoary cress	Redstem filaree	Wild mustard
Carolina geranium	Hoary plantain	Rough cinquefoil	Wild onion
Carpetweed	Hoary vervain	Rough fleabane	Wild parsnip
Catchweed bedstraw	Horsenettle	Russian pigweed	Wild radish
Catnip	Jimsonweed	Russian thistle	Wild rape
Catsear	Knawel	Scarlet pimpernel	Wild strawberry
Chickweed, common	Knotweed	Scotch thistle	Wild sweet potato
Chickweed, mouseear	Kochia	Sheep sorrel	Wild vetch
Chicory	Lambsquarters	Shepherdspurse	Woodsorrel
Cinquefoil	Lespedeza	Slender plantain	Woolly croton
Clover, crimson	Mallow	Smallflower galinsoga	Woolly morningglory
Clover, hop	Matchweed	Smooth dock	Woolly plantain
Clover, red	Mexicanweed	Smooth pigweed	Wormseed
Clover, strawberry	Milk vetch	Sorrel	Yarrow
Clover, sweet	Morningglory	Sowthistle	Yellow rocket
Clover, white	Mouseear hawkweed	Spanishneedles	Yellowflower pepperweed and other broadleaf weeds
	Mugwort	Speedwell	

5/16

SPREADERS AND CALIBRATION:

1. Drop spreaders and rotary spreaders must be calibrated for uniform application of this product.
2. Close spreader opening (orifice).
3. Adjust spreader setting using the Spreader Suggestions chart

Application Rate = 3 lbs. of product per 1,000 square feet.

SUGGESTED SPREADER SETTINGS:

Centrifugal/Rotary Spreaders	Application Rate, 3 lbs./1,000 sq.ft.
Frank's Broadcast	2 1/4
Scotts Speedy Green	5
Radio Flyer #0047	8 1/4
True Temper Rotary CB2000	3 3/4
Earthway Rotary #2050SU	14 1/2
Drop Spreaders	Application Rate, 3 lbs./1,000 sq.ft.
Frank's Drop	8 1/4
Greenview II	5 1/2
True Temper CD20	4 - 4 1/2
Scotts Accugreen AG1	5 1/2
Earthway Drop #7300SU	13 1/2

These spreader settings are approximate. Differences may occur due to the condition of spreader, speed at which applied and roughness of area treated. Check your spreader on 330 square feet and adjust to apply at the rate of 1 pound per 1,000 square feet.

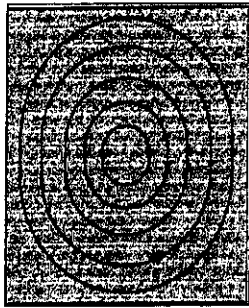
4. CALIBRATION INSTRUCTIONS:

- For 3.0 pounds of product per 1,000 square feet of turfgrass: Check you spreader on 330 square feet and adjust to apply at the rate of 1 pound of product per 330 square feet.
- For 3.2 pounds of product per 1,000 square feet of turfgrass: Check you spreader on 310 square feet and adjust to apply at the rate of 1 pound of product per 310 square feet.
- For 3.6 pounds of product per 1,000 square feet of turfgrass: Check you spreader on 275 square feet and adjust to apply at the rate of 1 pound of product per 275 square feet.
- For 4.0 pounds of product per 1,000 square feet of turfgrass: Check you spreader on 250 square feet and adjust to apply at the rate of 1 pound of product per 250 square feet.

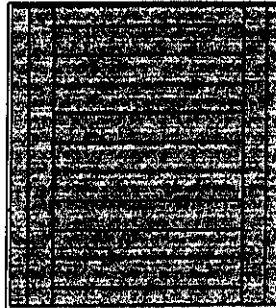
5. Fill spreader. Fill spreader on driveway or sidewalk to eliminate the chance of spillage on the lawn.

6. Apply the product to lawn. Refer to the patch charts below:

Path A for centrifugal/rotary spreaders.



Path B for drop spreaders.



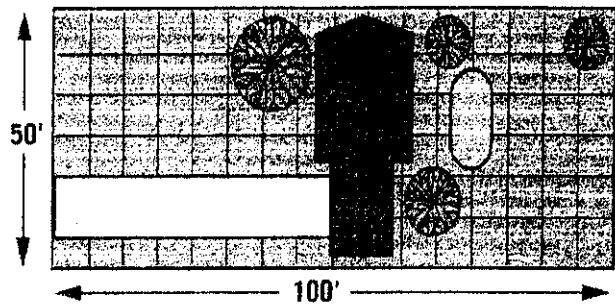
7. Close the spreader openings when turning to change directions or when stopping.

8. If using a centrifugal/rotary spreader, avoid spreading product into adjacent landscape, flowers or vegetable plantings.

NOTE: Supplemental applications of lawn fertilizer are needed to achieve a minimum 1 pound nitrogen per 1,000 square feet.

This ___ pound bag should cover approximately ___ square feet (___ ft. x ___ ft.) Refer to the table and picture to determine the size of your lawn.

COVERAGE CHART	
_____	Length
X _____	Width
= _____	Total Sq. Ft.
- _____	Non-Lawn Areas
= _____	Total Sq. Ft. Coverage you need.



24-4-8 GUARANTEED ANALYSIS	
Total Nitrogen (N).....	24%
Water Insoluble Nitrogen	5%
Available Phosphate (P ₂ O ₅).....	4%
Soluble Potash (K ₂ O).....	8%

Note to Supplemental Registrants: Fertilizer sources may vary in micronutrient composition, and iron may discolor or stain concrete. For fertilizers containing iron: Sweep all fertilizer from concrete surfaces immediately after application. Do not wash this product from concrete surfaces because fertilizers which contain iron may cause discoloration upon oxidation.

- WEEDS -		
Bedstraw	Knotweed	Ragweed
Black medic	Lambsquarters	Sheep sorrel
Buckhorn	Lespedeza	Shepherdspurse
Burdock	Mallow	Speedwell
Chickweed	Morningglory	Spurge
Chicory	Oxalis	Thistle
Clover	Peppergrass	Wild carrot
Dandelion	Pigweed	Wild garlic
Dock	Plantain	Wild lettuce
Ground ivy	Poison ivy	Wild onion
Healall	Poison oak	Yarrow
Henbit	Purslane	

LIMITED WARRANTY AND DISCLAIMER.

The manufacturer warrants only that the chemical composition of this product conforms to the ingredient statement given on the label, and that the product is reasonably suited for the labeled use when applied according to the Directions for Use.

THE MANUFACTURER NEITHER MAKES NOR INTENDS ANY OTHER EXPRESS OR IMPLIED WARRANTIES, INCLUDING ANY WARRANTY OF MERCHANTABILITY OR FITNESS FOR A PARTICULAR PURPOSE, WHICH ARE EXPRESSLY DISCLAIMED. This limited warranty does not extend to the use of the product inconsistent with label instructions, warnings or cautions, or to use of the product under abnormal conditions such as drought, excessive rainfall, tornadoes, hurricanes, etc. These factors are beyond the control of the manufacturer or the seller. Any damages arising from a breach of the manufacturer's warranty shall be limited to direct damages, and shall not include indirect or consequential damages such as loss of profits or values, except as otherwise provided by law.

The terms of this Limited Warranty and Disclaimer cannot be varied by any written or verbal statements or agreements. No employee or agent of the seller is authorized to vary or exceed the terms of this Limited Warranty and Disclaimer in any manner.

8/15

**Sublabel 2 – For Supplemental Registrations to Bayer Advanced LLC.
Distributor Company Number 72155**

Distributor Product Label:

Bayer Advanced Lawn® Triple Action Lawn Fertilizer PLUS Weed Control^{II} Ready-To-Spread Granules

PDF File of proposed container label follows:

9/15

Covers **5,000** Square Feet



TRIPLE ACTION

Lawn Fertilizer PLUS Weed Control^{II}

READY-TO-SPREAD GRANULES

▶ Kills dandelion, chickweed, clover and most common lawn weeds



Triple Action Feeding works at every level

- Grass** Greener, Thicker Lawn
- Roots** Stronger Root Systems
- Soil** Enriches & Fortifies Soil

30-3-4 NET WT 16 LBS (7.2kg)

CAUTION KEEP OUT OF REACH OF CHILDREN See back panel for preliminary statements

30-3-4 N-P-K
 1.4% IAA-N, 0.5% S, 0.5% Fe
 Contains: 100% IAA-N, 100% S, 100% Fe
 Other ingredients: 100% S, 100% Fe
 Total: 100% S, 100% Fe

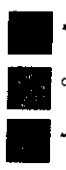
TRIPLE ACTION

Lawn Fertilizer PLUS Weed Control^{II}

Builds a Better Lawn - GUARANTEED!

1" seal area - 2.5" to bottom of handle

CPA	Date: May 14 -02
PEEL PLASTIC PRODUCTS	
Cust: Bayer Corp	
Design: 16 lb Weed & Feed	
Size: 14 x 21.5 + 2.5 bg + 2.5 lp - with handle	
Eyeline/Eyemark - as per die line Process - 300 DPI - @ final size	



fold area - ink ok - no copy

2" x 0.25" seal area - no ink

UPC should be 100% minimum and oriented in direction as shown on die line
UPC should not be in any seal areas including mitre seal area around gusset



21.5" 2.5"

10/15

Covers **5,000** Square Feet



TRIPLE ACTION Lawn Fertilizer with Weed Control

Bayer Advanced Lawn® Triple Action Fertilizer PLUS Weed Control® kills unwanted weeds such as dandelion, chickweed, and clover while it nourishes your lawn. Its Triple Action formula contains slow-release nitrogen which continuously feeds the grass, roots, and soil for up to two full months. And it's guaranteed not to burn. The result is a greener, thicker lawn. You're just one application away from a better lawn... That's the Bayer Better Lawn Guarantee.

READY-TO-SPREAD GRANULES

Triple Action Feeding works at every level for a Deep-Down Green!
Why is Triple Action better? By feeding at all levels, your lawn receives the primary nutrients it needs to thrive. This ensures thicker, greener grass, stronger root systems, and richer soil - the keys to building a lush lawn that lasts.



- Grass:** Builds thicker, greener grass and enhances overall appearance.
- Roots:** Builds stronger, deeper root systems which transport nutrients from the soil to the grass to help your lawn withstand heat stress and drought.
- Soil:** Enriches and fortifies your soil. Rich, fertile soil provides a foundation for establishing roots and replenishes vital primary nutrients.

4-Step Annual Program

Apply	Apply	Apply	Apply
EARLY SPRING Feb. - April	LATE SPRING April - June	SUMMER June - Aug.	FALL/WINTER Oct. - Nov.
Moist conditions Fertilize lawn	Kills weeds Fertilize lawn	Prevents heat Fights heat stress	Prevents root movement Improves spring greening

DIRECTIONS FOR USE

It is a violation of Federal law to use this product in a manner inconsistent with its labeling.

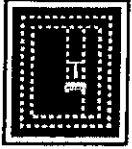
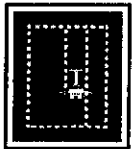
READ THE ENTIRE LABEL FIRST.

WEEDS:

- | | | |
|-------------------|-------------------|-----------------------------------|
| Aster | Florida Pusley | Purslane, Common |
| Black Medic | Ground Ivy | Ragweed |
| Buckhorn | Hairy Fleabane | Red Sorrel |
| Burdock | Healall | Redstem Filaree |
| Carolina Geranium | Heartleaf Drymary | Speedwell |
| Carpetweed | Henbit | Spurge |
| Chickweed | Knockout | Spurgeweed |
| Clovers | Morningglory | Thistles |
| Creeping Charlie | Oxalis | Wild Carrot |
| Cudweed | Pennywort | Wild Geranium |
| Curly Dock | Peppergrass | Wild Mustard |
| Daisy English | Plantain | Wild Onion |
| Dandelion | Poison Ivy | Woodstork |
| Dollarweed | Poison Oak | and many other
broadleaf weeds |
| Fatse Dandelion | Prostrate Pigweed | |
| | Prostrate Vervain | |

SPREADER SETTINGS

Centrifugal/Rotary Spreader	Application Rate
ORTHO ROTARY	2
PRECISION ROTARY (#5840)	2
W/O DEVI. ROTARY	2
REPUBLIC II ROTARY (#548)	2
SCOTT'S SPEED/GREEN 1000/2000	1
STA-GREEN ROTARY #58480	2
TILT TOWER ROTARY	2
Drop Spreaders	Application Rate
ORTHO DROP	1.5
REPUBLIC II DROP (#128)	1.5
SCOTT'S ACCU-GREEN 1000/2000	1.5
SCOTT'S DROP (#991, #72, #73, #74)	1.5
LEARS DROP	1.5
STA-GREEN DROP #054300	1



Drop spreaders and rotary spreaders must be calibrated for accurate application of this product. These spreader settings are approximate. Differences may occur due to the condition of operator, speed at which applied and roughness of area treated. Check your spreader on 3'0 square feet and adjust to apply at the rate of 1 pound per 110 square feet.

USE PRECAUTIONS

Do not use on richonda, carpetgrass, closely mowed bermudagrass, putting greens or St. Augustinegrass. Do not use this product where desirable flowers are present or allow the material to drift onto flowers, vegetables or ornamental shrubbery. Do not spread over exposed roots of trees and ornamentals. Do not exceed specified dosages for any area, be particularly careful with ornamentals and other ornamental species. Apply when the air is calm. Application of this product to newly seeded

areas should be delayed until the third mowing. Do not use on lawns, domestic, or irrigation waters.



Do not allow people (other than the applicator) or pets on treatment area during application. Do not use on treatment area until soil has dried.

INSTRUCTIONS

The maximum application rate is 1.2 pounds 2,4-D acid equivalent per acre per application per site. The maximum number

of broadcast applications per treatment site is 2 per year.

- Mow lawn to normal height 1 to 2 days before application.
- Water lawn thoroughly at least 1 day before application to a 1/2 inch moisture until the next watering (see step 4).
- Apply when weeds are young and actively growing, preferably in the morning when the dew is on the grass. If grass is not moist at time of application, sprinkle lightly with water to hold the material and

prevent dust drift onto non-target plants.

- Do not wash from weed leaves for 1 to 2 days after application. At this time a thorough watering should be made. Post-broadcast treatment may be necessary if (a) leaves are heavily covered by weeds or (b) if active new material is visible. Aerial and vehicle are a state of prior approval.
- A second application may be made in approximately 30 days. Treated areas may be reseeded 3 to 4 weeks after application.

PRECAUTIONARY STATEMENTS AND ENVIRONMENTAL HAZARDS

PRECAUTIONARY STATEMENTS Hazard to Humans and Domestic Animals

CAUTION

- Harmful if swallowed.
- Do not inhale dust.
- Do not allow contact with skin, eyes or clothing.
- When using this product wear long-sleeved shirt, long pants, socks and shoes.
- After using this product, remove clothing and launder separately before reuse, and promptly and thoroughly wash hands and exposed skin with soap and water.

FIRST AID +

- If in eyes:** Hold eye open and rinse slowly and gently with water for 15-20 minutes. Remove contact lenses, if present, after the first 5 minutes, then continue rinsing eye. Call a poison control center or doctor for treatment advice.
- If on skin or clothing:** Take off contaminated clothing. Rinse skin immediately with plenty of water for 15-20 minutes. Call a poison control center or doctor for treatment advice.
- If swallowed:** Call a poison control center or doctor immediately for treatment advice. Have person sip a glass of water if able to swallow. Do not induce vomiting unless told to do so by a poison control center or doctor. Do not give anything by mouth to an unconscious person.

Have the product container or label with you when calling a poison control center or doctor or going for treatment. You may also call toll-free 1-877-229-3763 for emergency medical treatment information.

STORAGE AND DISPOSAL

STORAGE: Store in original container and keep any bags containing unused product in a locked storage area inaccessible to children and domestic animals. Do not store near food or feedstuffs.

DISPOSAL

If Empty—Do not reuse this container. Place in trash or other recycling if available.
If Partly Filled—Call your local solid waste agency for disposal instructions. Never place unused product down any drain or outdoor drain.

ENVIRONMENTAL HAZARDS

Drift or runoff may adversely affect non-target plants. Do not apply directly to water. Do not contaminate water when cleaning or equipment wash-water. Do not apply when weather conditions favor drift from target area.

Notice: Research and testing have demonstrated that the "Directions for Use" are appropriate for the proper use of this product under expected conditions. The Bayer assumes no liability for lack of performance or safety if not used according to the directions.

For questions or comments, call toll-free 1-877-BayerAL (1-877-229-3725) or visit us online at www.BayerAdvanced.com

GUARANTEED ANALYSIS: 30-3-4

Total Nitrogen N	30.00%
11% Ammoniacal Nitrogen	
24.90% Urea Nitrogen	
17.9% Diuretic Nitrogen	
13% Water Insoluble Nitrogen	
Available Phosphate (P ₂ O ₅)	3.00%
Soluble Potash (K ₂ O)	4.00%
Sulfur S	0.1%

This product contains a herbicide active ingredient, triazine, which is a restricted use pesticide. The nitrogen in this product provides 83% Water Available Nitrogen from polymer coated sulfur coated urea, methyleneurea and dimethylammonium sulfate.

Money Back Guarantee: If you are not satisfied with this product, we will gladly refund your original purchase price.



Bayer Advanced LLC
300 John Center Drive
Birmingham, AL 35247
80311 00
EY-0100116

8-21-02
Plan "B"

11/15

**Sublabel 3 – For Supplemental Registrations to Bayer Advanced LLC.
Distributor Company Number 72155**

Distributor Product Label:

Bayer Advanced Lawn[®] Triple Action Winterizer Fertilizer PLUS Weed Control^{||} Ready-To-Spread Granules

PDF File of proposed container label follows:

12/15

014.62

Covers **5,000** Square Feet



TRIPLE ACTION

Winterizer Fertilizer PLUS Weed Control^{II}

READY-TO-SPREAD GRANULES

- ▶ Kills weeds and builds a thick, green Fall lawn
- Nourishes all Winter for a quick Spring green-up

Triple Action Feeding works at every level

- Grass** Greener, Thicker Lawn
- Roots** Stronger Root Systems
- Soil** Enriches & Fortifies Soil

22-3-14 NET WT 18 LBS (8.1kg)

KEEP OUT OF REACH OF CHILDREN
CAUTION See back panel for precautionary state reports

Active Ingredients: 22.0% CAS No. 94-75-7; 3.0% CAS No. 1051-11-9; 1.0% CAS No. 1011-23-9; Other Ingredients: 73.0% Total Weight: 18.0 lbs (8.1 kg) Contains the single visible area of this bag.

TRIPLE ACTION



1" seal area - 2.6" to bottom of handle

	Date: May 14 -02
PIEL PLASTIC PRODUCTS	
Client: Bayer Corp	
Design: 18 lb Weed & Feed	
Size: 14 x 21.5 + 2.5 bg + 2.5 tp - with handle	
Eyeline/Eyemark - as per dieline	
Process - 300 DPI - @ final size	

21.5"

2.5"

fold area --ink ok -- no copy

2" x 0.25" seal area - no ink

UPC should be 100% minimum and oriented in direction as shown on the line
UPC should not be in any seal areas including mitre seal area around gusset



8-22-02

13/15

Covers 5,000 Square Feet



TRIPLE ACTION! Winterizer Fertilizer & Weed Control!

Bayer Advanced Lawn® Triple Action Winterizer Fertilizer PLUS Weed Control™ kills unwanted weeds such as dandelion, chickweed, and clover while it nourishes your lawn. Its Triple Action formula contains slow release nitrogen which continuously feeds the grass, roots, and soil all winter long. And it's guaranteed not to burn. The result is a greener, thicker lawn this fall and quicker growth next spring. You're just one application away from a better lawn this fall and next spring... That's the Bayer Better Lawn Guarantee.

READY-TO-SPREAD GRANULES

Triple Action Feeding works at every level for a Deep-Down Green!

Why is Triple Action better? By feeding at all levels, your lawn receives the primary nutrients it needs to thrive. This ensures thicker, greener grass, stronger root systems, and richer soil - the keys to building a lush lawn that lasts.

- Grass:** Builds thicker, greener grass and enhances overall appearance.
- Roots:** Builds stronger, deeper root systems which transport nutrients from the soil to the grass to help your lawn withstand heat-stress and drought.
- Soil:** Enriches and fortifies your soil. Rich, fertile soil provides a foundation for sustaining roots and replenishes vital primary nutrients.

4-Step Annual Program

Apply EARLY SPRING Feb. - April	Apply LATE SPRING April - June	Apply SUMMER June - Aug.	Apply WINTERIZING Oct. - Nov.
Stain and prevent Frost damage	Kills weeds Fertilizes lawn	Reduces lawn Foggy seed spots	Builds root development Improves spring greening

DIRECTIONS FOR USE

It is a violation of Federal law to use this product in a manner inconsistent with its labeling.

READ THE ENTIRE LABEL FIRST.

WEEDS:

- | | | |
|-------------------|--------------------|-----------------------------------|
| Aster | Florida Pusley | Purslane, Common |
| Black Medic | Ground Ivy | Ragweed |
| Buckhorn | Hairy Fleabane | Red Sorrel |
| Burclover | Healall | Redstem Filaree |
| Burdock | Heartleaf Drymaria | Speedwell |
| Carolina Geranium | Henbit | Spurge |
| Carpenterweed | Knotweed | Spurweed |
| Chickweed | Morningglory | Thistle |
| Clovers | Oxalis | Wild Carrot |
| Creeping Charlie | Peppercorn | Wild Geranium |
| Cudweed | Plantain | Wild Mustard |
| Curly Dock | Poison Ivy | Wild Onion |
| Daisy, English | Poison Oak | Woodruff |
| Dandelion | Prostrate Pigweed | and many other
broadleaf weeds |
| Dollarweed | Prostrate Vervain | |
| False Dandelion | | |

USE PRECAUTIONS
Do not use on dandelions, carpenterweeds, clover, or any other weeds, putting green or St. August's grass. Do not use this product where desirable flowers are present or allow the material to drift onto flowers, vegetables or ornamental shrubbery. Do not spread over exposed roots of trees and ornamentals. Do not exceed specified dosage for any area. Be particularly careful within dripline of trees and other ornamentals. Apply when the air is calm. Application of this product to newly seeded areas should be delayed until the lawn is mowed. Do not consume air, animals, or irrigation water.

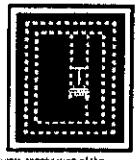
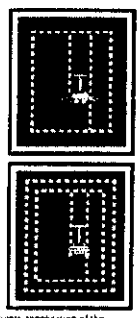
Do not allow people, animals, or dogs to enter treated areas until the area is dry.

INSTRUCTIONS
The maximum application rate is 1.2 pounds 2,4-D active ingredient per acre per application per year. The maximum number of broadcast applications per treatment area is 2 per year.

- Mow lawn to normal height 1 to 2 days before application.
- Water lawn thoroughly at least 1 day before application to sustain moisture until the next watering (see step 4).
- Apply when weeds are young and actively growing, preferably in the morning when the dew is on the grass. If grass is dormant at time of application, sprinkle lightly with water to hold the material and prevent dust drift onto nontarget plants.

Drop spreaders and rotary spreaders must be calibrated for accurate application of this product. These spreader settings are approximate. Differences may occur due to the condition of spreader, speed at which applied, roughness of area treated. Check your spreader on 775 square feet and adjust to apply at the rate of 1 pound per 775 square feet.

Drop spreaders and rotary spreaders must be calibrated for accurate application of this product. These spreader settings are approximate. Differences may occur due to the condition of spreader, speed at which applied, roughness of area treated. Check your spreader on 775 square feet and adjust to apply at the rate of 1 pound per 775 square feet.



PRECAUTIONARY STATEMENTS AND ENVIRONMENTAL HAZARDS

PRECAUTIONARY STATEMENTS

Hazards to Humans and Domestic Animals
CAUTION

- Irritant to eyes.
- Do not inhale dust.
- Do not allow contact with skin, eyes or clothing.
- When using this product, wear long-sleeved shirt, long pants, socks and shoes.
- After using this product, remove clothing and launder separately before reuse, and promptly and thoroughly wash hands and exposed skin with soap and water.

FIRST AID +

- If in eyes:** Hold eye open and rinse slowly and gently with water for 15-20 minutes. Remove contact lenses, if present, after the first 5 minutes, then continue rinsing eye. Call a poison control center or doctor for treatment advice.
- If on skin or clothing:** Take off contaminated clothing. Rinse skin immediately with plenty of water for 15-20 minutes. Call a poison control center or doctor for treatment advice.
- If swallowed:** Call a poison control center or doctor immediately for treatment advice. Have person sip a glass of water if able to swallow. Do not induce vomiting unless told to do so by a poison control center or doctor. Do not give anything by mouth to an unconscious person.

Have the product container or label with you when calling a poison control center or doctor or going to hospital. Show this label to the doctor. 1-877-225-3763 for emergency medical treatment information.

STORAGE AND DISPOSAL

STORAGE: Store in a cool, dry place away from the sun. Do not store in a plastic bag. Do not use for food or feed.

DISPOSAL: If empty, do not reuse this container. Place in trash or other recycling if available.

If this label is on a plastic bag, call your local solid waste agency for disposal instructions. Never place unused product down any drainage or waterway.

ENVIRONMENTAL HAZARDS

This product may be toxic to fish and aquatic plants. Do not apply directly to water, or to streams or water bodies. Do not apply to water bodies or to areas where water runoff may occur. Do not apply to areas where runoff may occur.

Notice: Avoid if you are pregnant or nursing. Do not use if you are pregnant or nursing. The manufacturer is not responsible for any damage to property or crops caused by the use of this product.

For quantities or comments, call 1-877-BayerAL (1-877-225-3725) or visit our website at www.BayerAdvanced.com

GUARANTEED ANALYSIS: 22-3-14

22-3-14	22.00%
3-3-14	3.00%
14-14-14	14.00%
14-14-14	5.75%

Contains 20% Slow Release Nitrogen, 3% Polymer Coated Urea, 14% Polymer Coated Urea, 14% Polymer Coated Urea, 14% Polymer Coated Urea.

Information regarding the content and levels of metals in this product is available on the internet at <http://www.bayeradvanced.com>.

When applied to soil, this product forms a granule for 1 week as required by the Association of American Plant Food Control Officials (A.P.F.C.O.) 2011-2012.

EPA Reg. No. 227-225-3763
EPA Reg. No. 227-225-3763
EPA Reg. No. 227-225-3763

Money Back Guarantee: If you are not satisfied with this product, we will gladly refund your original purchase price.

8-21-02
Plan "B"

APPENDIX

I. Previously Approved Fertilizer Grades:

- Fertilizer grades with nutrient contents expressed as the percentages of N, P₂O₅, and K₂O include the following:

10-6-4	16-3-5	20-10-0-(1)	22-10-10	25-3-8	28-3-7	30-4-8
10-16-20	16-6-9	20-10-5	24-7-7	25-4-8	28-3-8	32-4-8
10-18-10	18-3-5	21-5-7	24-3-7	26-3-3	29-3-4	
12-5-5	18-6-12	22-3-1	24-4-8	26-3-5	30-3-4	
15-5-10	20-4-6	22-6-6	25-3-3	26-4-6	30-3-5	
16-2-3	20-4-8	22-7-7	25-3-5	28-3-3	30-3-10	

The fertilizer grade guaranteed analyses may contain macronutrients and micronutrients. The nutrient contents expressed will vary among states, and the analyses will differ between supplemental registrations. The following guaranteed analyses presentations have previously been submitted as notifications:

10-16-20 GUARANTEED ANALYSIS	
Total Nitrogen (N).....	10%
6.0% Ammoniacal Nitrogen	
4.0% Urea Nitrogen	
Available Phosphate (P ₂ O ₅).....	16%
Soluble Potash (K ₂ O).....	20%
Magnesium (Mg).....	1.0%
0.1% Water Soluble Magnesium (Mg)	
Sulfur (S).....	2.0%
2.0% Combined Sulfur (S)	
Iron (Fe).....	1.0%
Manganese (Mn).....	0.5%
0.1% Water Soluble Manganese (Mn)	
Nutrient Sources: Urea, Ammonium Phosphate, Ammonium Sulfate, Muriate of Potash, Ferrous Sulfate, Manganese Oxide, Manganese Sulfate, Sulfate of Potash Magnesia and Magnesium oxide.	

29-3-4 GUARANTEED ANALYSIS	
Total Nitrogen (N).....	29%
1.1% Ammoniacal Nitrogen	
27.9% Urea Nitrogen	
Available Phosphate (P ₂ O ₅).....	3%
Soluble Potash (K ₂ O).....	4%
Derived from: Polymer-coated urea, urea, diammonium phosphate, and muriate of potash.	
*11.0% slowly available urea nitrogen from polymer coated urea.	
Chlorine (Cl). note more than.....	4.0%

10-18-10 GUARANTEED ANALYSIS	
Total Nitrogen (N).....	10%
10.0% Ammoniacal Nitrogen	
Available Phosphate (P ₂ O ₅).....	18%
Soluble Potash (K ₂ O).....	10%
Sulfur (S).....	2.0%
5.0% Combined Sulfur (S)	
Nutrient Sources: Ammonium Sulfate, Ammonium Phosphate and Muriate of Potash.	

26-4-6 GUARANTEED ANALYSIS	
Total Nitrogen (N).....	26%
1.8% Ammoniacal Nitrogen	
24.4% Urea Nitrogen	
Available Phosphoric Acid(P ₂ O ₅).....	4%
Soluble Potash (K ₂ O).....	6%
Boron (B).....	0.02%
Copper (Cu).....	0.05%
Iron (Fe).....	1.00%
Total Manganese (Mn).....	0.06%
Molybdenum (Mo).....	0.0005%
Zinc (Zn).....	0.05%
Primary Plant Food Sources: Sulfur coated urea, urea, diammonium phosphate, muriate of potash.	
Secondary Plant Food Sources: Fertilizer grade borate, sulfates and oxides of copper, sulfates and oxides of iron, oxides of manganese, fertilizer grade molybdate, and sulfates and oxides of zinc.	
*4.0% slowly available urea nitrogen from sulfur coated urea.	
Chlorine (Cl), not more than	4.8%

28-3-7 GUARANTEED ANALYSIS	
Total Nitrogen (N).....	28%
1.2% Ammoniacal Nitrogen	
26.8% Urea Nitrogen	
Available Phosphoric Acid(P ₂ O ₅).....	3%
Soluble Potash (K ₂ O).....	7%
Primary Plant Food Sources: Polymer-coated urea, urea, diammonium phosphate, muriate of potash	
*7.0% slowly available urea nitrogen from polymer-coated urea.	
Chlorine (Cl), not more than	6.4%

II. Advertising claims that may be presented on the retail containers:

- ◆ (Fifteen, Sixteen, Eighteen or Twenty) Pounds Covers Up To 5,000 Square Feet.
- ◆ Controls/Kills dandelion, chickweed, knotweed, plantain, henbit, spurge and many other broadleaf weeds; some of which are listed on the back panel
- ◆ An 18-6-12 fertilizer provides slow-release feeding to promote winter hardiness and drought tolerance in lawns.
- ◆ Feeds your lawn for up to 12 weeks.
- ◆ Controls/Kills over 30 varieties of weeds while feeding your lawn.
- ◆ Greens lawns and develops deep roots while controlling weeds.
- ◆ Bring out the best with the turf magic touch!
- ◆ Controls/Kills dandelion, plantain, and other weeds
- ◆ Feeds the lawn with two (2) types of nitrogen and is pelleted for easy application.
- ◆ Controls (Number) weeds! (Listing of weeds may include the following)
- ◆ Controls (Number) weeds! (Listing of weeds may include the following.)