

DIRECTIONS FOR USE

Soybean Seed Protectant is a specifically designed formulation for the treatment of soybean seed. It protects sound and/or mechanically injured seed against seed and soil-borne diseases such as seedling blights, damping-off and seed decay organisms at planting time.

Designed to protect seed at planting time, Soybean Seed Protectant enables the farmer to avoid the additional handling of commercial seed treatment, thus lowering the percent of cracked or split seed planted. At recommended dosage rates, this product assures adequate seed coverage and allows any excess to flow down with the seed into the furrow, thus affording maximum protection. Can be used on previously treated seed.

Soybeans are most likely to benefit from treatment with this product when planted in acidic soil (soils needing liming), heavily leached soils, or soils high in iron content.

SOYBEANS: Use Soybean Seed Protectant as a planter box treatment. Add 4 ozs. of this product to 1 bushel of Seed Soybeans. Stir seed slightly in the planter box, using a mixing stick. Additional mixing will result from the operation of the planter. **DO NOT MIX WITH BARE HANDS.**

555-572



SOYBEAN Seed Protectant

with **SEED LUBE**®

MANUFACTURED BY
PBI - GORDON CORPORATION
KANSAS CITY, KANSAS

DIRECTIONS FOR USE

CAUTION: Do not breathe vapor or dust. Do not get on skin. In case of contact wash immediately with soap and water. Do not contaminate feed and foodstuffs. Do not use treated seed for food, feed or oil; label treated seed as such. Do not feed treated seeds to animals. When container is empty, immediately wash thoroughly and destroy. Never re-use.

This product is poisonous to fish.

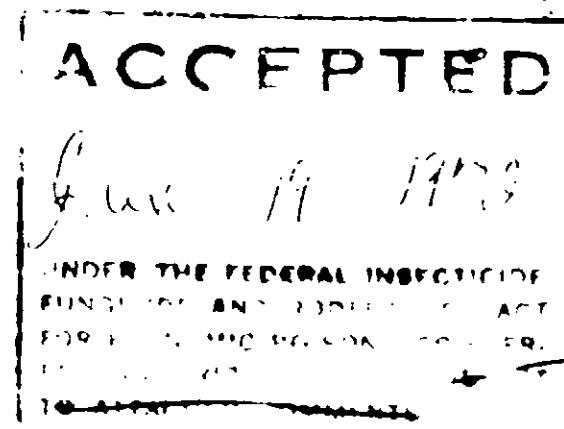
Do not contaminate water by cleaning of equipment, or disposal of wastes. Apply this product only as specified on this label.

NOTICE: Seller warrants that this product conforms to the ingredient statement on the label. Since conditions of use, such as weather, compatibility with other chemicals, and condition of application equipment, will vary, Seller makes no claims other than those stated on this label.

NOTE: This product is sold by weight and package is full when packed, but due to fluffy nature this material is inclined to settle.

E.P.A. Reg. No. 2217-569

555-572



2217-569

DIRECTIONS FOR USE

Soybean Seed Protectant is a specifically designed formulation for the treatment of soybean seed. It protects sound and/or mechanically injured seed against seed and soil-borne diseases such as seedling blights, damping-off and seed decay organisms at planting time.

Designed to protect seed at planting time, Soybean Seed Protectant enables the farmer to avoid the additional handling of commercial seed treatment, thus lowering the percent of cracked or split seed planted. At recommended dosage rates, this product assures adequate seed coverage and allows any excess to flow down with the seed into the furrow, thus affording maximum protection. Can be used on previously treated seed.

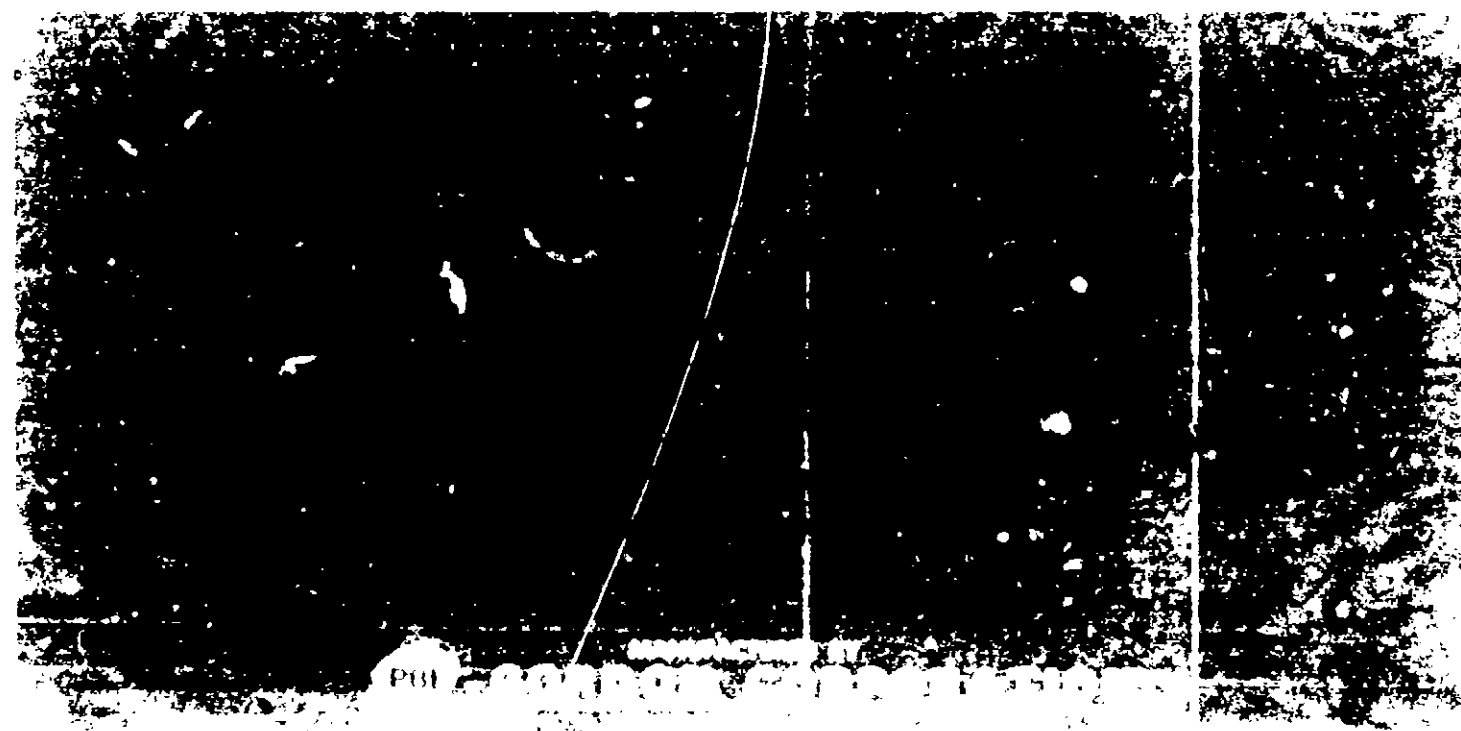
Soybeans are most likely to benefit from treatment with this product when planted in acidic soil, soils needing liming, heavily leached soils, or soils high in iron content.

SOYBEANS: Use Soybean Seed Protectant as a planter box treatment. Add 4 ozs. of this product to 1 bushel of Seed Soybeans. Stir seed slightly in the planter box, using a mixing stick. Additional mixing will result from the operation of the planter. **DO NOT MIX WITH BARE HANDS.**

555 572



SOYBEAN Seed Protectant[®] with SEED LUBE[®]



DIRECTIONS FOR USE

CAUTION: Do not breathe vapor or dust. Do not get on skin. In case of contact wash immediately with soap and water. Do not contaminate feed and foodstuffs. Do not use treated seed for food, feed or oil; label treated seed as such. Do not feed treated seeds to animals. When container is empty, immediately wash thoroughly and destroy. Never reuse.

This product is poisonous to fish.

Do not contaminate water by cleaning of equipment or disposal of wastes. Apply this product only as specified on this label.

NOTICE: Seller warrants that this product conforms to the ingredient statement on the label. Since conditions of use, such as weather, compatibility with other chemicals, and condition of application equipment, will vary, Seller makes no claims other than those stated on this label.

NOTE: This product is sold by weight and package is full when packed, but due to fluffy nature this material is inclined to settle.

E.P.A. Reg. No. 2217-569

555 572