



# RES-Q<sup>\*</sup> -100

SEED DISINFECTANT AND PROTECTANT\*\*  
DUST OR SLURRY

MANUFACTURED BY  
**PBI - GORDON CORPORATION**  
KANSAS CITY, KANSAS

**CAUTION:** Caution should be observed in using. Do not mix seed with the bare hands.

1. Avoid inhaling plus wear a dry dust filter and fume mask suitable for protection from Maneb, Captan and Hexachlorobenzene when handling this seed disinfectant.
2. Avoid contact with eyes, skin and clothing. In case of contact with skin, wash with soap and water. For eyes, flush with water for 15 minutes and get medical attention. May cause irritation of eyes, nose and throat.
3. Wash hands before eating or smoking.
4. Do not allow to become wet during storage. If Maneb becomes wet during storage, its fungicidal effectiveness may be reduced and it may also produce vapors which may be flammable.
5. Keep container tightly closed except when removing contents and store in a dry, well ventilated area away from food stuffs.
6. Treat only the amount of seed to be sown to avoid the problem of storing treated seed and the associated hazards of feed and food contamination.
7. Do not use treated or left over seed for food or feed purposes.
8. This product is toxic to fish. Keep out of any body of water. Do not contaminate water by cleaning of equipment, or disposal of wastes.
9. Do not reuse container. Destroy it by perforating or crushing. Bury or discard in a safe place.
10. Dispose of excess treated seeds by burial.

**NOTICE:** Seller warrants that this product conforms to the ingredient statement on the label. Since conditions of use, such as weather, compatibility with other chemicals and condition of application equipment, will vary, Seller makes no claims other than those stated on this label.

E.P.A. Reg. No. 2217-564-AA

501-872

RECEIVED  
MAY 19 1972



# RES-Q\* -100

**SEED DISINFECTANT AND PROTECTANT\*\*  
DUST OR SLURRY**

MANUFACTURED BY  
**PBI - GORDON CORPORATION**  
KANSAS CITY, KANSAS

## DIRECTIONS FOR USE

### GENERAL INFORMATION:

RES-Q is specially formulated for use as a dust treatment on a number of crops for the control of on seed, or diseases in the soil which attack seed planting or seedlings. It is suitable for use applied to the seed as a dust in the hopper box or through treaters; or it can be mixed in water and applied as a slurry on the farm or in the seed plant.

### HOPPER BOX Treatment:

For best results mix RES-Q thoroughly with seed. If pre-mix RES-Q with seed in a separate container or treaters. If this is not possible, partly fill (1/3) the hopper box with seed and sprinkle proper amount of RES-Q on grain and mix with a paddle. Repeat as needed to coat seed. Do not mix with bare hands.

### SLURRY Treatment:

Prepare slurry by mixing RES-Q in proper amount with water. The following table gives dosage of chemicals for various crops and recommended dilutions for slurry application.

SEED	DUST		SLURRY		Example Cup Size*
	Dosage in Ounces Per Bushel	Lbs. RES-Q Per Gal. of SLURRY	Bushels Per Gal. of SLURRY		
Wheat	1	1.0	16		30cc
Rye	2	1.5	12		30cc
Barley	2	1.5	12		30cc
Oats	2	1.5	12		30cc
Flax	4	2.0	8		30cc
Sorghum and Milo	2	1.5	12		30cc

\*Because treatment machines vary so greatly it is not possible to specify every slurry cup size, seed gate setting, or how to set pan dump weight.

ved in using. Do not mix

Just filter and fume mask  
Maneb, Captan and Hexa-  
this seed disinfectant.

clothing. In case of con-  
and water. For eyes, flush  
and get medical attention.  
nose and throat.

smoking.

during storage. If Maneb  
is fungicidal effectiveness  
also produce vapors which

except when removing  
well ventilated area away

to be sown to avoid the  
and the associated haz-  
ination.

er seed for food or feed

Keep out of any body of  
water by cleaning of equip-

destroy it by perforating or  
safe place.

s by burial!

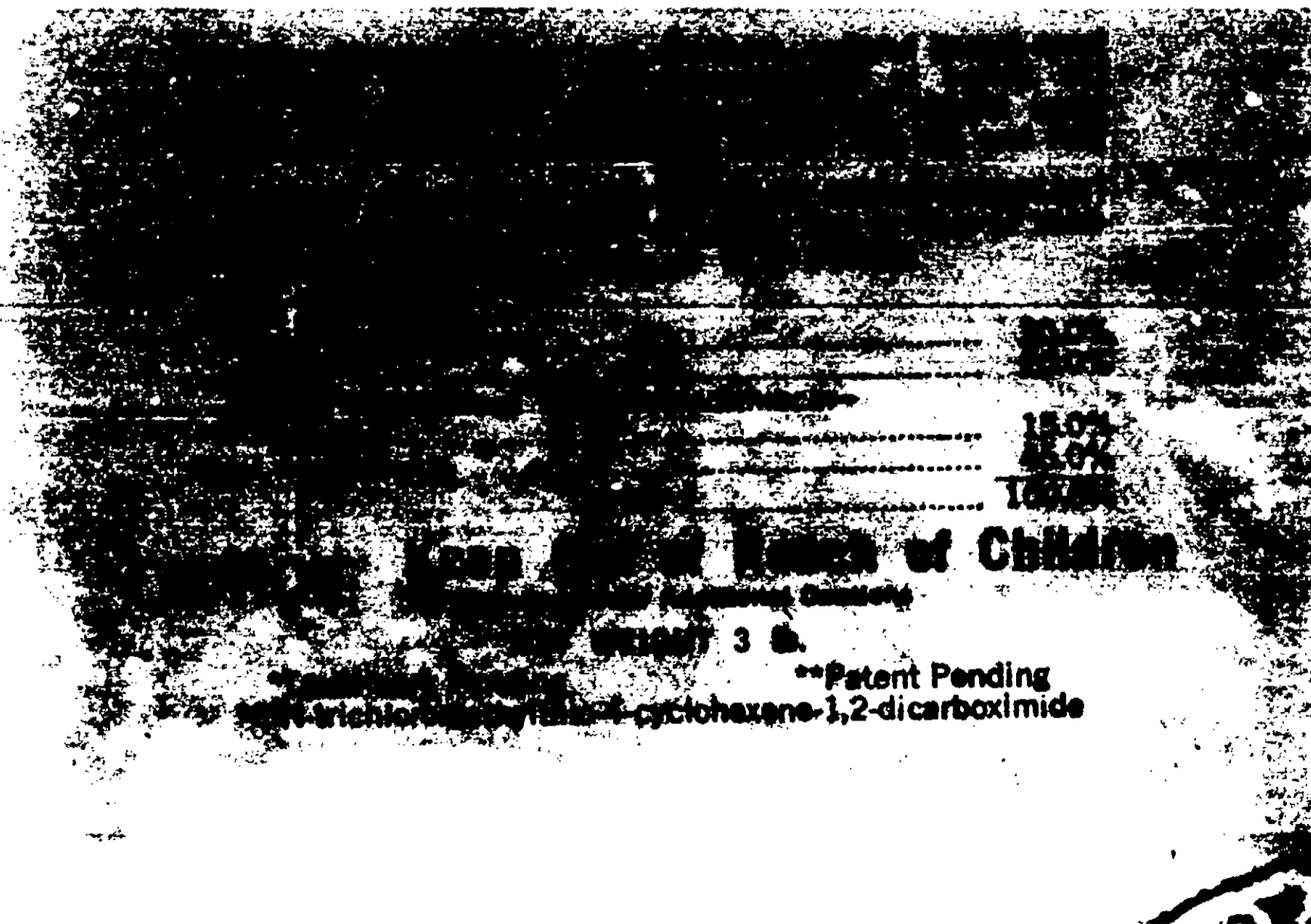
s product conforms to the  
l. Since conditions of use,  
with other chemicals and  
ent, will vary, Seller makes  
d on this label.

501-872



# RES-Q\* -100

**SEED DISINFECTANT AND PROTECTANT  
DUST OR SLURRY**



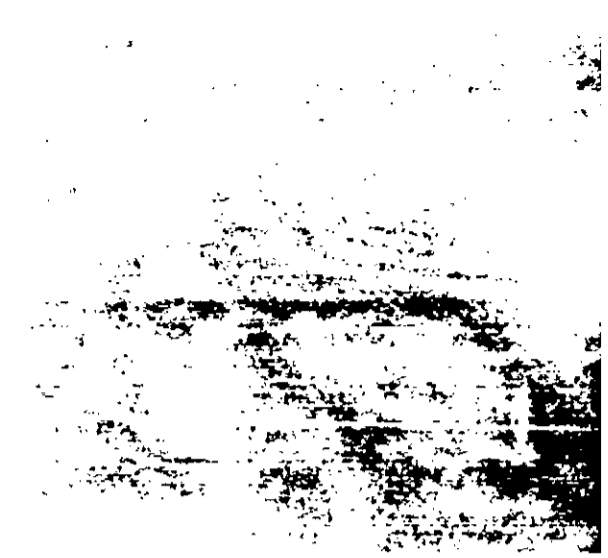
**Keep out of Reach of Children**  
 \*\*Patent Pending  
 1,1-dichloro-4-(4-chlorophenyl)-piperazine-2,6-dione  
 1,2-dichloro-4-(4-chlorophenyl)-piperazine-1,2-dione

**CAUTION:** Caution should be observed when handling seed with the bare hand.

1. Avoid inhaling plus wear a dust filter and fume mask suitable for protection from Menth, Cantar, and dieldr-chlorobenzene when handling this seed disinfectant.
2. Avoid contact with eyes, skin, and clothing. In case of contact with skin, wash with soap and water. For eye contact with water for 15 minutes and get medical attention. May cause irritation of eyes, nose and throat.
3. Wash hands before eating or smoking.
4. Do not allow to be in contact with food. If Menth becomes wet during use it may lose effectiveness. May be reduced and it may be flammable. It may be flammable.
5. Keep container tightly closed when not in use. Keep contents and store in a dry, well-ventilated area away from food stuffs.
6. Treat only the amount of seed to be sown. Do not treat the problem of stored seed and the seed in the bags of feed and food containers.
7. Do not use treated or untreated seed for animal feed or for these purposes.
8. This product is toxic to fish. Keep it out of water. Do not contaminate water by disposal of empty containers and disposal of waste.
9. Do not reuse containers. Do not reuse packaging. Wash hands and discard packaging. Do not reuse treated seed for these purposes.

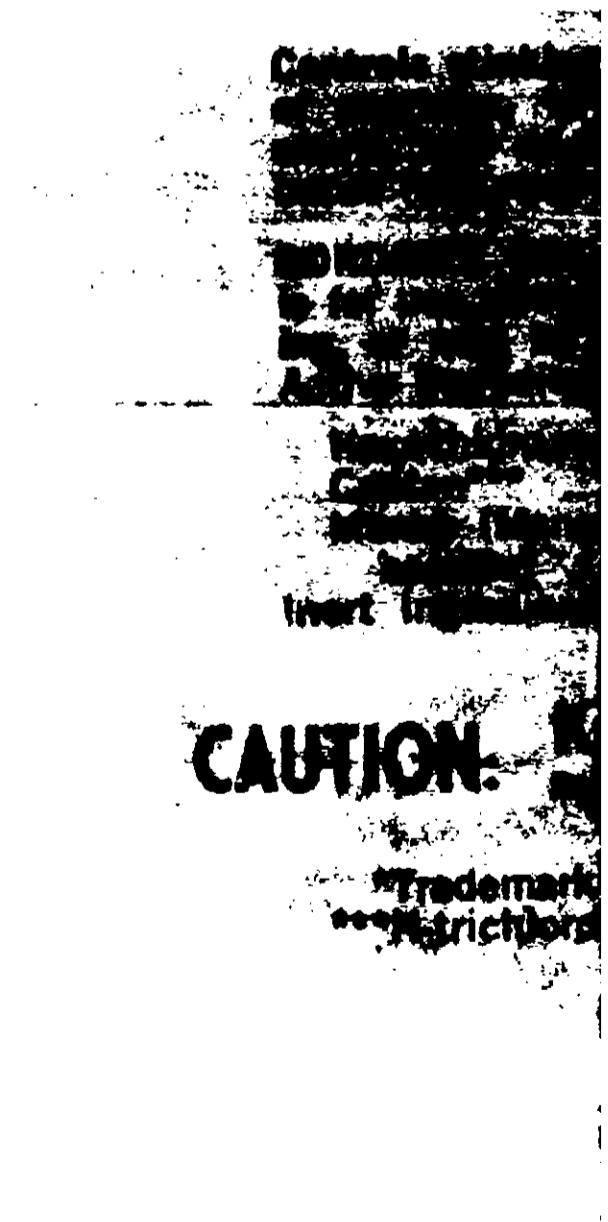
**NOTICE:** Seller warrants that this product is not a hazardous material under the Federal Hazardous Substances Act, as amended, and that it is not a pesticide under the Federal Insecticide, Fungicide, and Rodenticide Act, as amended, and that it is not a controlled substance under the Federal Controlled Substances Act, as amended.

U.S. Pat. No. 3,177,443



# RES-

**SEED DISINI**



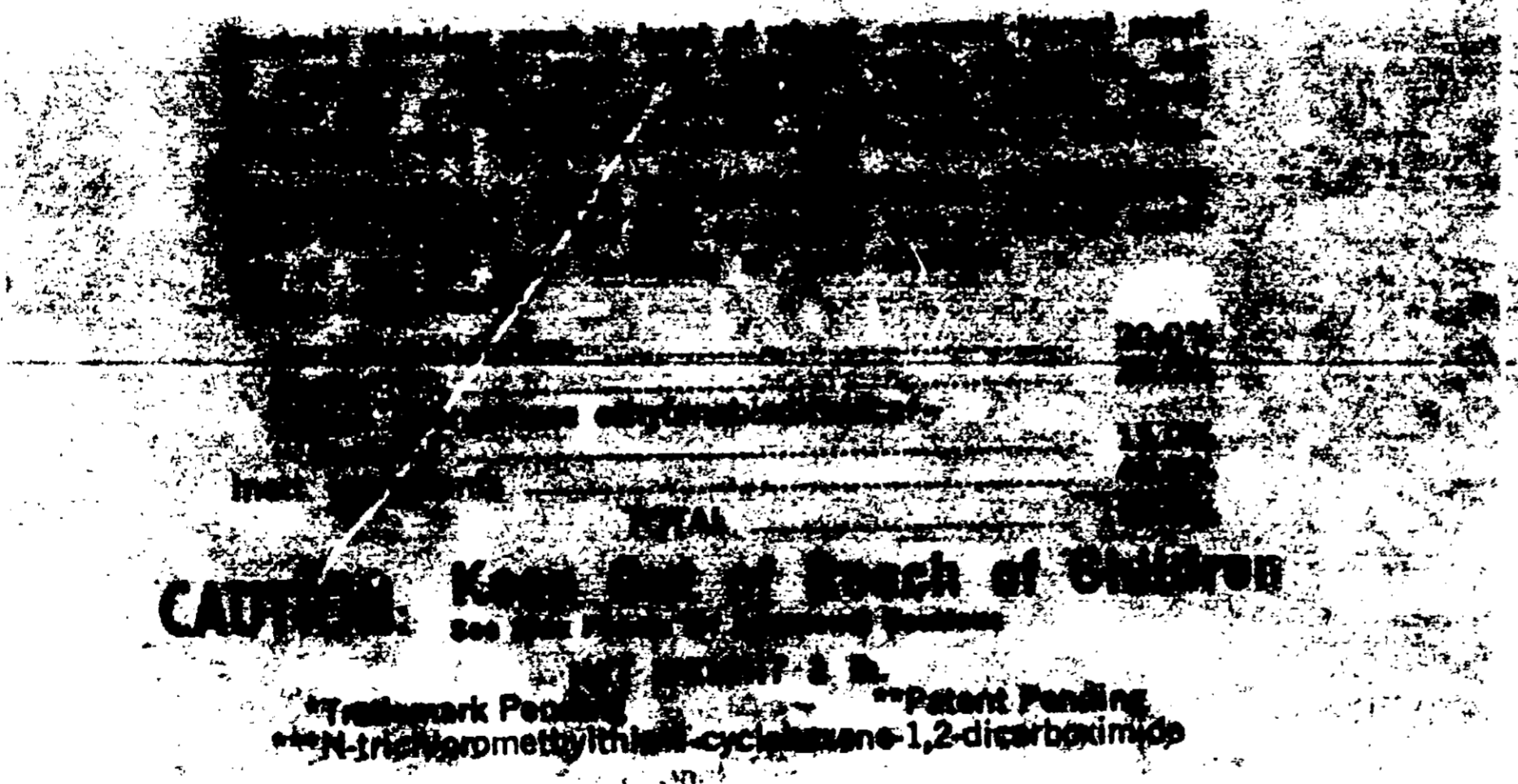
**CAUTION.**

\*\*Trademark  
 \*\*\*Res-trichloro



# RES-Q<sup>\*</sup> - 100

SEED DISINFECTANT AND PROTECTANT\*\*  
DUST OR SLURRY



## DIRECTIONS FOR USE

### GENERAL INFORMATION:

RES-Q is specially formulated for the control of seed-borne fungi, bacteria and viruses. It is effective against a wide range of seed-borne diseases. It is suitable for use applied directly to the seed as a dust in the hopper box or through dust treaters or it can be mixed in water and applied as a slurry on the farmer or in the seed plant.

### HOPPER BOX Treatment:

For best results mix RES-Q to slurry with seed in a separate container. Mix RES-Q with seed in a separate container or dust treaters. If this is not possible, partly fill the hopper box with seed and sprinkle proper amount of RES-Q on the grain and mix with a paddle. Repeat as necessary for all seed. Do not mix with bare hands.

### SLURRY Treatment:

Prepare slurry by mixing RES-Q in proper amount of water. The following table gives dosage of RES-Q for various crops and recommended quantities for slurry treatment.

Crop	DUST		SLURRY	
	Per Bushel	Per Ton	Per Bushel	Per Ton
Wheat	1.0	20.0	0.5	10.0
Rye	1.0	20.0	0.5	10.0
Barley	1.0	20.0	0.5	10.0
Oats	1.0	20.0	0.5	10.0
Legumes	1.0	20.0	0.5	10.0
Sorghum	1.0	20.0	0.5	10.0
Millet	1.0	20.0	0.5	10.0

The above treatment is for general use. For specific information on the use of RES-Q for various crops and diseases, consult the product literature or contact the manufacturer.