

# TRIMEC<sup>TM</sup> 2DMA TURF HERBICIDE

FORMERLY KILLEX

**CAUTION: Keep out of Reach of Children.**

SEE SIDE PANEL FOR ADDITIONAL CAUTION  
STATEMENTS

U.S. PATENT NO. 3,284,186

ACTIVE INGREDIENTS:

*Dimethylamine salt of 2-(2-methyl-4-chlorophenoxy)propionic acid	21.76%
**Dimethylamine salt of 2,4-dichlorophenoxyacetic acid	21.67%
***Dimethylamine salt of Dicamba (3,6-dichloro-cyanistric acid)	2.05%

INERT INGREDIENTS

TOTAL	54.52%
****Equivalent to 2-(2-methyl-4-chlorophenoxy)propionic acid	17.92%
*****Equivalent to 2,4-dichlorophenoxyacetic acid	18.00%
*****Equivalent to 3,6-dichlorocyanistric acid	1.71%
	100.00%

**PRIVATE BRANDS, INC.**

300 SOUTH 3RD ST., KANSAS CITY, KANSAS 66118

**NET CONTENTS: 55 GALLONS**

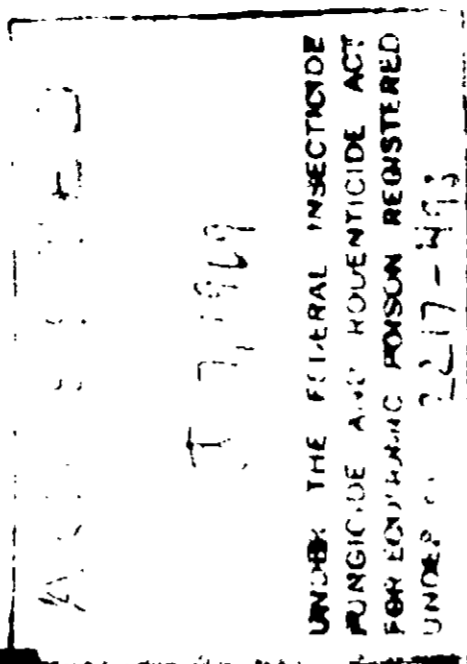
869-669

U.S.D.A. Reg. No. 2217-493

**MANUFACTURING CONCENTRATE**

For use in formulating a liquid Turf Herbicide.

Not for use as a...



**CAUTION:** Harmful if swallowed. Do not get in eyes, on skin or clothing. In case of contact, wash with soap and water.

Do not contaminate or store near feed or foodstuffs.

Avoid inhalation of spray mist.

**DON'T OVER DOSE!** Follow directions carefully. Do not let spray drift to sensitive plants such as vegetables, legumes, grapes, flowers, cotton or other 2,4-D susceptible plants. Use coarse spray when there is less chance for "wind drift." Do not store near fertilizers, seeds, insecticides or fungicides. Do not contaminate water to be used for domestic or irrigation purposes. Local Spray conditions will vary. Check local recommendations first. Use separate spray equipment for insecticides and fungicides. Do not reuse empty container. Wash thoroughly with water and detergent. Discard in a safe place. Do not make aerial applications near cotton or sensitive plants.

**NOTICE:** Seller warrants that this product conforms to the ingredient statement on the label. Since conditions of use, such as weather, compatibility with other chemicals, and condition of application equipment, will vary, Seller makes no claims other than those stated on this label.

TM - R - K - R

**DIRECTIONS FOR USE**

**ORNAMENTAL, LAWNS AND TURF (Other than bent grass).** Apply TRIMEC ESTATE HERBICIDE at the rate of 2½ quarts (80 fl. oz.) per acre in sufficient water for adequate coverage (1 fl. oz. on 500 sq. ft.). Maximum kill of weeds will be obtained from spring or early fall application when weeds are actively growing. Avoid applying during long excessively dry or hot periods unless adequate irrigation is available. Do not irrigate within 24 hours of application. Do not apply to newly seeded turf until after the second or third mowing. Grass seed can be safely sown 3 to 4 weeks after application at recommended rate. Do not use on dichondra, carpetgrass, and St. Augustine grass.

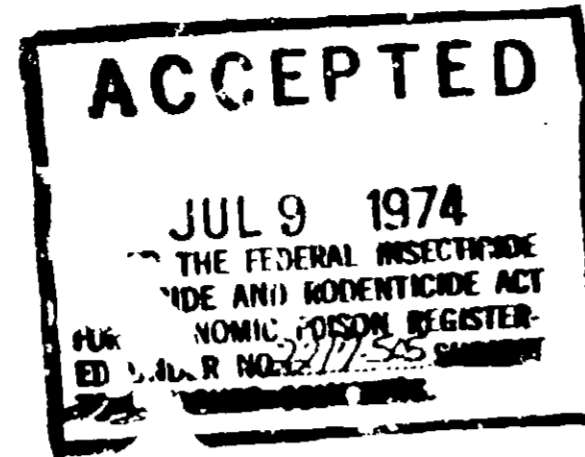
**BENT GRASS TURF:** In closely mowed bent grass (Putting and bowling greens), apply TRIMEC ESTATE HERBICIDE at a maximum rate of 1 fluid ounce per 1,000 square feet preferably in May, or mid-August through September. Slight turf yellowing will disappear after about one week.

**NOTE:** Care should be taken to avoid overdosing bent grasses or injury may result. Large volumes of spray water (i.e. 1 fl. oz. in 5 gal. water per 1,000 sq. ft.) will aid in obtaining uniform coverage. If hand-type sprayers are used it is preferable to use a single nozzle sprayer rather than a multiple nozzle boom as sideways application with a boom where the spray from more than one nozzle is allowed to fall on the same area will result in heavy local overapplication and subsequent turf discoloration or injury.

**NOTICE:** Seller warrants that this product conforms to the ingredient statement on the label. Since conditions of use, such as weather, compatibility with other chemicals, and condition of application equipment will vary, Seller makes no claims other than those stated on this label.

**CONTAINER DISPOSAL:** Do not reuse empty drum. Return to drum recon-ditioner or destroy by perforating or crushing and burying in a safe place away from water supplies.

E.P.A. Reg. No. 2217-505-AA 894-674



# ESTATE BROADLEAF HERBICIDE

Contains \*TRIMEC® Herbicide

DANDELIONS	KNOTWEED	HENBIT
CHICKWEED	PLANTAINS	SPURGE
and Many Other Broadleaf Weeds		

Contains: 2,4-D, MCPP AND Dicamba  
ONE GALLON COVERS 2-2½ ACRES.  
KEEP FROM FREEZING

ACTIVE INGREDIENTS:

*Diethanolamine salt of 2-(2-methyl-4-chlorophenoxy) propionic acid.....	25.79%
**Diethanolamine salt of 2,4-dichlorophenoxyacetic acid.....	25.49%
***Diethanolamine salt of Dicamba (3,6-dichloro-o-anisic acid).....	2.41%
INERT INGREDIENTS.....	46.31%
Total.....	100.00%

*Equivalent to 2-(2-methyl-4-chlorophenoxy) propionic acid	17.31%
**Equivalent to 2,4-Dichlorophenoxyacetic acid	17.28%
***Equivalent to 3,6-dichloro-o-anisic acid	1.64%

**CAUTION: Keep Out of Reach of Children**  
See Side Panels for Additional Cautions

**NET CONTENTS 55 GALLONS**

\*Trimec® is a registered trademark of P.B.I. Gordon Corporation.  
U.S. Patent No. 3,841,115

**MANUFACTURED BY**  
**PBI - GORDON CORPORATION**

KANSAS CITY, KANSAS

65118

**WEEDS CONTROLLED:** TRIMEC ESTATE HERBICIDE is especially effective against weeds such as SHEEP SORREL, KNOTWEED, SPOTTED SPURGE, CHICKWEED, OXALIS AND HENBIT. In addition to these, it kills virtually all broadleaf weeds, some of which are listed below.

Do not allow spray to get on vegetable or ornamentals plants since injury may result. Some injury can be expected to turf when used on Centipede or St. Augustine grass lawns. "Spot Spray" weeds only. Clover present will be damaged if sprayed.

Bedstraw	Knotweed	Ragweed
Black Medic	Lambsquarter	Shepherd's Purse
Buckhorn	Lespedeza	Speedwell
Chicory	Mallow	Spurge
Chickweed	Morning Glory	Wild Carrot
Clover	Peppergrass	Wild Garlic
Dandelion	Pigweed	Wild Lettuce
Dock	Plantains	Wild Onion
Ground Ivy	Poison Ivy	Yarrow
Heal-All	Poison Oak	
Henbit	Purslane	

**CAUTION:** Harmful if swallowed. Avoid contact with skin, eyes, or clothing. Avoid breathing spray mist. If contact with eyes occurs, flush with plenty of water.

Avoid drift of spray mist onto vegetables, flowers, ornamental plants, shrubs, trees and other desirable plants. Do not contaminate domestic or irrigation water. Do not spray solutions near these plants. Do not store in contact with fertilizers, seeds, insecticides, or fungicides. Do not spray on carpetgrass dichondra nor lawns or turf where desirable clovers are present. Use only lawn sprayers for this use. Coarse sprays are less likely to drift. Do not apply to areas underlaid by roots of desirable trees and shrubs. This product may be injurious to St. Augustine grass.

Do not contaminate water by cleaning of equipment, or disposal of wastes. Apply this product only as specified on this label.

E.P.A. Est. No. 2217-KS-1

894-674

**DIRECTIONS FOR USE**

**ORNAMENTAL, LAWNS AND TURF** (Other than bent grass). Apply TRIMEC ESTATE HERBICIDE at the rate of 2 1/2 quarts (80 fl. oz.) per acre in sufficient water for adequate coverage (1 fl. oz. on 500 sq. ft.) Maximum kill of weeds will be obtained from spring or early fall application when weeds are actively growing. Avoid applying during long excessively dry or hot periods unless adequate irrigation is available. Do not irrigate within 24 hours of application. Do not apply to newly seeded turf until after the second or third mowing. Grass seed can be safely sown 3 to 4 weeks after application at recommended rate. Do not use on dichondra, carpetgrass, and St. Augustine grass.

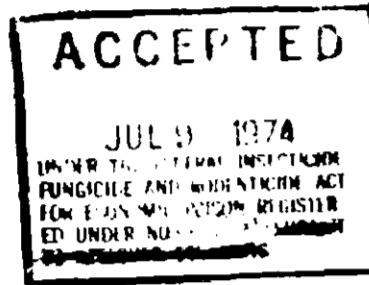
**BENT GRASS TURF:** In closely mowed bent grass (Putting and bowling greens) apply TRIMEC ESTATE HERBICIDE at a maximum rate of 1 fluid ounce per 1,000 square feet preferably in May or mid August through September. Slight turf yellowing will disappear after about one week.

**NOTE:** Care should be taken to avoid overdosing bent grasses or injury may result. Large volumes of spray water (i.e. 1 fl. oz. in 5 gal. water per 1,000 sq. ft.) will aid in obtaining uniform coverage. If hand type sprayers are used it is preferable to use a single nozzle sprayer rather than a multiple nozzle boom as sideways application with a boom where the spray from more than one nozzle is allowed to fall on the same area will result in heavy local overapplication and subsequent turf discoloration or injury.

**NOTICE:** Seller warrants that this product conforms to the ingredient statement on the label. Since conditions of use such as weather, compatibility with other chemicals, and condition of application equipment will vary, Seller makes no claims other than those stated on this label.

**CONTAINER DISPOSAL:** Do not reuse empty drum. Return to drum reconditioner or destroy by perforating or crushing and burying in a safe place away from water supplies.

E.P.A. Reg. No. 2217-505-AA 894-674



# ESTATE BROADLEAF HERBICIDE

Contains \*TRIMEC Herbicide

**KILLS:** DANDELIONS KNOTWEED HENBIT  
CHICKWEED PLANTAINS SPURGE  
and Many Other Broadleaf Weeds

Contains: 2,4-D, MCPP AND Dicamba  
ONE GALLON COVERS 2-2 1/2 ACRES.  
KEEP FROM FREEZING

<b>ACTIVE INGREDIENTS</b>	
*Diethanolamine salt of 2-(2-methyl-4-chlorophenoxy) propionic acid	25.79%
**Diethanolamine salt of 2,4-dichlorophenoxyacetic acid	25.49%
***Diethanolamine salt of D-camba (3,6-dichloro-o-methyl-a-b)	2.41%
<b>INERT INGREDIENTS</b>	46.31%
Total	100.00%

\*Equivalent to 2,4-dimethyl-4-chlorophenoxy propionic acid 17.31%  
\*\*Equivalent to 2,4-dichlorophenoxyacetic acid 17.6%  
\*\*\*Equivalent to 3,6-dichloro-o-methyl-a-b 1.49%

**CAUTION: Keep Out of Reach of Children**  
See Side Panels for Additional Cautions

**NET CONTENTS 55 GALLONS**

Trade Dressing and Labeling of this product is the property of Gordon's Chemicals, Inc. Patent Pending.

MANUFACTURED BY  
**GORDON CORPORATION**

KANSAS CITY, KANSAS

42

**WEEDS CONTRA**  
HERBICIDE is e  
weeds such as  
WEED SPOTTE  
OXALIS AND HE  
it kills virtually  
of which are list

Do not allow spr  
ornamentals plan  
Some injury can  
use for Centipe  
lawns. Spot Sp  
present will be d

Bedstraw	Knot
Black Medic	Large
Buckhorn	Lesq
Chicory	Milk
Chickweed	Morp
Clover	Pepp
Dandelion	Pign
Dock	Plant
Ground Ivy	Pigso
Hair-All	Pojao
Hepbit	Pugal

**CAUTION:** Harmf  
contact with sk  
Avoid breathing  
with eyes occurs  
water.

Avoid drift of spr  
bloss, flowers,  
shrubs, trees,  
plants. Do not c  
or irrigation wate  
tions near these  
in contact with  
secticides, or fun  
on carpetgrass or  
turf where desira  
ent. Use only la  
use. Coarse spra  
drift. Do not app  
by roots of desira  
This product may  
Augustine grass.

Do not contaminat  
of equipment, or  
Apply this produc  
on this label

E.P.A. Est. No. 221

ACCEPTED

JUL 9 1974

UNDER THE FEDERAL INSECTICIDE  
FUNGICIDE AND RODENTICIDE ACT  
FOR ECONOMIC POISON REGISTER  
ED UNDER NO. 277-233-00000



# ESTATE BROADLEAF HERBICIDE

Contains **TRIMEC** Herbicide

**KILLS:** DANDELIONS KNOTWEED HENBIT  
CHICKWEED PLANTAINS SPURGE  
and Many Other Broadleaf Weeds

Contains: 2,4-D, MCPP AND Dicamba  
ONE GALLON COVERS 2-2½ ACRES.  
KEEP FROM FREEZING

**ACTIVE INGREDIENTS:**

\*Diethanolamine salt of 2-(2-methyl-4-chlorophenoxy) propionic acid 25.79%

\*\*Diethanolamine salt of 2,4-dichlorophenoxyacetic acid 25.49%

\*\*\*Diethanolamine salt of Dicamba (3,6-dichloro o-anisic acid) 2.41%

**INERT INGREDIENTS** 46.31%

Total 100.00%

\*Equivalent to 2-(2-methyl-4-chlorophenoxy) propionic acid 17.31%

\*\*Equivalent to 2,4-Diethylphenylacetic acid 17.28%

\*\*\*Equivalent to 3,6-dichloro o-anisic acid 1.64%

**CAUTION: Keep Out of Reach of Children**  
See Side Panels for Additional Cautions

**NET CONTENTS 55 GALLONS**

†Trimec is a registered trademark of Gordon's Chemical Corporation  
U.S. Patent No. 3,522,000

MANUFACTURED BY

**PBI - GORDON CORPORATION**

KANSAS CITY, KANSAS

42

**WEEDS CONTROLLED** TRIMEC ESTATE HERBICIDE is especially effective against weeds such as SHEEP SORE, KNOTWEED, SPOTTED SPURGE, CHICKWEED, OXALIS AND HENBIT. In addition to these, it kills virtually all broadleaf weeds, some of which are listed below.

Do not allow spray to get on vegetable or ornamentals plants since injury may result. Some injury can be expected to turf when used on Centipede or St. Augustine grass lawns. "Spot Spray" weeds only. Clover present will be damaged if sprayed.

Bedstraw	Knotweed	Ragweed
Black Medic	Lambsquarter	Shepherd's
Buckhorn	Lespedeza	Pulse
Chicory	Mallow	Speedwell
Chickweed	Morning Glory	Spurge
Clover	Peppergrass	Wild Carrot
Dandelion	Pigweed	Wild Garlic
Dock	Plantains	Wild Lettuce
Ground Ivy	Poison Ivy	Wild Onion
Heel-All	Poison Oak	Yarrow
Henbit	Puglane	

**CAUTION:** Harmful if swallowed. Avoid contact with skin, eyes, or clothing. Avoid breathing spray mist. If contact with eyes occurs, flush with plenty of water.

Avoid drift of spray mist onto vegetables, flowers, ornamental plants, shrubs, trees and other desirable plants. Do not contaminate domestic or irrigation water. Do not spray solutions near these plants. Do not store in contact with fertilizers, seeds, insecticides, or fungicides. Do not spray on carpetgrass, dichondra nor lawns or turf where desirable clover is present. Use only lawn sprayers for this use. Coarse sprays are less likely to drift. Do not apply to areas underlaid by roots of desirable trees and shrubs. This product may be injurious to St. Augustine grass.

Do not contaminate water by cleaning of equipment, or disposal of wastes. Apply this product only as specified on this label.

894-674

ESTATE

43

**DIRECTIONS FOR USE**

**ORNAMENTAL, LAWNS AND TURF (Other than bent grass).** Apply TRIMEC ESTATE HERBICIDE at the rate of 2½ quarts (80 fl. oz.) per acre in sufficient water for adequate coverage (1 fl. oz. on 500 sq. ft.). Maximum kill of weeds will be obtained from spring or early fall application when weeds are actively growing. Avoid applying during long excessively dry or hot periods unless adequate irrigation is available. Do not irrigate within 24 hours of application. Do not apply to newly seeded turf until after the second or third mowing. Grass seed may be safely sown 3 to 4 weeks after application at recommended rate. Do not use on dichondra, carpetgrass, and St. Augustine grass.

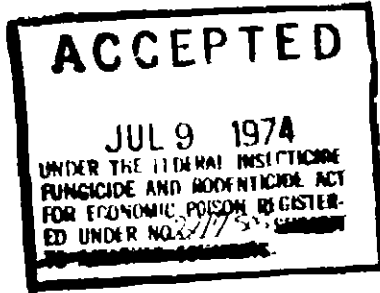
**BENT GRASS TURF:** In closely mowed bent grass (Putting and bowling greens), apply TRIMEC ESTATE HERBICIDE at a maximum rate of 1 fluid ounce per 1,000 square feet preferably in May, or mid-August through September. Slight turf yellowing will disappear after about one week.

**NOTE:** Care should be taken to avoid overdosing bent grasses or injury may result. Large volumes of spray water (i.e. 1 fl. oz. in 5 gal. water per 1,000 sq. ft.) will aid in obtaining uniform coverage. If hand-type sprayers are used it is preferable to use a single nozzle sprayer rather than a multiple nozzle boom as sideways application with a boom where the spray from more than one nozzle is allowed to fall on the same area will result in heavy local overapplication and subsequent turf discoloration or injury.

**NOTICE:** Seller warrants that this product conforms to the ingredient statement on the label. Since conditions of use such as weather, compatibility with other chemicals, and condition of application equipment will vary, Seller makes no claims other than those stated on this label.

**CONTAINER DISPOSAL:** Do not reuse empty drum. Return to drum reconditioner or destroy by perforating or crushing and burying in a safe place away from water supplies.

E.P.A. Reg. No. 2,17-505-AA 894-674



# ESTATE BROADLEAF HERBICIDE

Contains \*TRIMEC® Herbicide

**KILLS:** DANDELIONS KNOTWEED HENBIT  
CHICKWEED PLANTAINS SPURGE  
and Many Other Broadleaf Weeds

Contains: 2,4-D, MCPP AND Dicamba  
ONE GALLON COVERS 2-2½ ACRES.  
KEEP FROM FREEZING

**ACTIVE INGREDIENTS:**

*Diethanolamine salt of 2-(2-methyl-4-chlorophenoxy) propionic acid	25.79%
**Diethanolamine salt of 2,4-dichlorophenoxyacetic acid	25.49%
***Diethanolamine salt of Dicamba (3,6-dichloro o-anisic acid)	2.41%
<b>INERT INGREDIENTS</b>	<b>46.31%</b>
<b>Total</b>	<b>100.00%</b>

\*Equivalent to 2-(2-methyl-4-chlorophenoxy) propionic acid 17.31%  
\*\*Equivalent to 2,4-Dichlorophenoxyacetic acid 17.28%  
\*\*\*Equivalent to 3,6-dichloro o-anisic acid 1.64%

**CAUTION: Keep Out of Reach of Children**  
See Side Panels for Additional Cautions

**NET CONTENTS 55 GALLONS**

\*Trimec is a registered trademark of PBI-Gordon Corporation  
U.S. Patent No. 3,384,000

**MANUFACTURED BY**  
**PBI - GORDON CORPORATION**

**KANSAS CITY, KANSAS**

**WEEDS CONTROLLED BY THIS HERBICIDE include:** weeds such as WEED SPOTS, OXALIS AND many others. It kills virtually all weeds of which are listed below.

Do not allow ornamentals or lawns to be used on Cent lawns. Spot present will be present.

- Bedstraw
- Black Medic
- Buckhorn
- Chicory
- Chickweed
- Clover
- Dandelion
- Dock
- Ground Ivy
- Heart-All
- Hepbit

**CAUTION:** Hazardous to contact with skin. Avoid breathing dust. Avoid contact with eyes or water.

Avoid drift of herbicide on lawns, flower beds, shrubs, trees, plants. Do not use or irrigation near plants. Do not use in contact with insecticides, or on carpetgrass turf where de-ent. Use only coarse use. Coarse drift. Do not use by roots of de-ent. This product kills St. Augustine grass.

Do not contain equipment. Apply this product on this label.

E.P.A. Reg. No.

**ACCEPTED**  
**JUL 9 1974**  
 UNDER THE FEDERAL INSTITUTE  
 FUNGICIDE AND RODENTICIDE ACT  
 FOR ECONOMIC POISON REGISTERED  
 UNDER NO. 277-25-00000



# ESTATE BROADLEAF HERBICIDE

Contains \*TRIMEC® Herbicide

**KILLS:** DANDELIONS KNOTWEED HENBIT  
 CHICKWEED PLANTAINS SPURGE  
 and Many Other Broadleaf Weeds

Contains: 2,4-D, MCPP AND Dicamba  
 ONE GALLON COVERS 2-2½ ACRES.  
 KEEP FROM FREEZING

**ACTIVE INGREDIENTS:**

*Diethanolamine salt of 2-(2-methyl-4-chlorophenoxy) propionic acid	25.79%
**Diethanolamine salt of 2,4-dichlorophenoxyacetic acid	25.49%
***Diethanolamine salt of Dicamba (3,6-dichloro-o-anisic acid)	2.41%
<b>INERT INGREDIENTS</b>	<b>46.31%</b>
<b>Total</b>	<b>100.00%</b>

\*Equivalent to 2-(2-methyl-4-chlorophenoxy) propionic acid 17.31%  
 \*\*Equivalent to 2,4-Dichlorophenoxyacetic acid 17.28%  
 \*\*\*Equivalent to 3,6-dichloro-o-anisic acid 1.64%

**CAUTION: Keep Out of Reach of Children**  
 See Side Panels for Additional Cautions

**NET CONTENTS 5½ GALLONS**

\*Trimec is a registered trademark of PBI-Gordon Corporation  
 U.S. Patent No. 3,304,000

MANUFACTURED BY  
**PBI-GORDON CORPORATION**  
 KANSAS CITY, KANSAS

**WEEDS CONTROLLED:** TRIMEC ESTATE HERBICIDE is especially effective against weeds such as SHEEP SORREL, KNOT WEED, SPOTTED SPURGE, CHICKWEED, OXALIS AND HENBIT. In addition to these, it kills virtually all broadleaf weeds, some of which are listed below.

Do not allow spray to get on vegetable or ornamentals plants since injury may result. Some injury can be expected to turf when used on Centipede or St. Augustine grass lawns. "Spot Spray" weeds only. Clover present will be damaged if sprayed.

Bedstraw	Knotweed	Ragweed
Black Medic	Larbsquarter	Shepherd's Purse
Buckhorn	Lespedeza	
Chicory	Mallow	Speedwell
Chickweed	Morning Glory	Spurge
Clover	Peppergrass	Wild Carrot
Dandelion	Pigweed	Wild Garlic
Dock	Plantains	Wild Lettuce
Ground Ivy	Poison Ivy	Wild Onion
Heart-All	Poison Oak	Yarrow
Hepbit	Puglane	

**CAUTION:** Harmful if swallowed. Avoid contact with skin, eyes, or clothing. Avoid breathing spray mist. If contact with eyes occurs, flush with plenty of water.

Avoid drift of spray mist onto vegetables, flowers, ornamental plants, shrubs, trees and other desirable plants. Do not contaminate domestic or irrigation water. Do not spray solutions near these plants. Do not store in contact with fertilizers, seeds, insecticides, or fungicides. Do not spray on carpetgrass dichondra nor lawns or turf where desirable clovers are present. Use only lawn sprayers for this use. Coarse sprays are less likely to drift. Do not apply to areas underlaid by roots of desirable trees and shrubs. This product may be injurious to St. Augustine grass.

Do not contaminate water by cleaning of equipment, or disposal of wastes. Apply this product only as specified on the label.

894-674

E.P. & Est. No. 111451

45