

2217-480

NOTIFICATION  
12/03/2002

55 15 12 3/11

Please read instructions on reverse before completing form.

Form Approved. OMB No. 2070-0060. Approval Expires 02-28-95



United States  
Environmental Protection Agency  
Washington, DC 20460

- Registration
- Amendment
- Other

OPP Identifier Number

### Application for Pesticide - Section I

1. Company/Product Number 2217-480	2. EPA Product Manager Joanne I. Miller	3. Proposed Classification <input checked="" type="checkbox"/> None <input type="checkbox"/> Restricted
4. Company/Product (Name) Gordon's Weeder Granules	PM# (PM 23)	
5. Name and Address of Applicant (Include ZIP Code) PBI/Gordon Corporation PO Box 014090 Kansas City, Missouri 64101 <input type="checkbox"/> Check if this is a new address	6. Expedited Review. In accordance with FIFRA Section 3(c)(3) (b)(i), my product is similar or identical in composition and labeling to: EPA Reg. No. _____ Product Name _____	

### Section - II

- Amendment - Explain below.
- Resubmission in response to Agency letter dated \_\_\_\_\_
- Notification - Explain below.
- Final printed labels in response to Agency letter dated \_\_\_\_\_
- "Me Too" Application.
- Other - Explain below.

**NOTIFICATION**

**DEC 3 - 2002**

Explanation: Use additional page(s) if necessary. (For section I and Section II.)

#### NOTIFICATION per PR Notice 98-10:

1) We ask to add the additional brand name "Gordon's Weed Preventer Granules." 2) We ask to add advertising claims and graphics that may be presented on the container label. (Refer to page 10). The number of applications, application methods, application or dosage rate and use sites have been maintained without change. One (1) copy of the proposed label is enclosed for your review.

This notification is consistent with the provisions of PR Notice 98-10 and EPA regulations at 40CFR 152.46, and no other changes have been made to the labeling or the confidential statement of formula of this product. I understand that it is a violation of 18 U.S.C. Sec. 1001 to willfully make any false statement to the EPA. I further understand that if this notification is not consistent with the terms of PR Notice 98-10 and 40CFR 152.46, this product may be in violation of FIFRA and I may be subject to enforcement action and penalties under Section 12 and 14 of FIFRA.

### Section - III

1. Material This Product Will Be Packaged In:				2. Type of Container	
Child-Resistant Packaging <input type="checkbox"/> Yes* <input type="checkbox"/> No	Unit Packaging <input type="checkbox"/> Yes <input type="checkbox"/> No	Water Soluble Packaging <input type="checkbox"/> Yes <input type="checkbox"/> No		<input type="checkbox"/> Metal	<input type="checkbox"/> Plastic
* Certification must be submitted				<input type="checkbox"/> Glass	<input type="checkbox"/> Paper
	If "Yes" Unit Packaging wgt.	No. per container	If "Yes" Package wgt.	No. per container	<input type="checkbox"/> Other (Specify) _____
3. Location of Net Contents Information <input type="checkbox"/> Label <input type="checkbox"/> Container		4. Size(s) Retail Container		5. Location of Label Directions <input type="checkbox"/> On Label <input type="checkbox"/> On Labeling accompanying product	
6. Manner in Which Label is Affixed to Product <input type="checkbox"/> Lithograph <input type="checkbox"/> Paper glued <input type="checkbox"/> Stenciled			<input type="checkbox"/> Other _____		

### Section - IV

1. Contact Point (Complete items directly below for identification of individual to be contacted, if necessary, to process this application.)					
Name Craig Martens		Title Manager of Regulatory Services		Telephone No. (include Area Code) 816/480-6287	
Certification I certify that the statements I have made on this form and all attachments thereto are true, accurate and complete. I acknowledge that any knowingly false or misleading statement may be punishable by fine or imprisonment or both under applicable law.					6. Date Application Received (Stamped)
2. Signature 		3. Title Manager of Regulatory Services			
4. Typed Name Craig Martens		5. Date November 14, 2002			

# GORDON'S WEEDER GRANULES

**ACTIVE INGREDIENT:**

Trifluralin: alpha, alpha, alpha-trifluoro-2,6-dinitro-N,N-dipropyl-p-touluidine.....	1.47%
<b>INERT INGREDIENTS.....</b>	<b><u>98.53%</u></b>
<b>TOTAL</b>	<b>100.00%</b>

**KEEP OUT OF REACH OF CHILDREN**

**NOTIFICATION**

**DEC 3 - 2002**

## WARNING - AVISO

Si usted no entiende la etiqueta, busque a alguien para que se la explique a usted en detalle. (If you do not understand the label, find someone to explain it to you in detail).

See side panels for additional Precautionary Statements

**NET WEIGHT: THREE POUNDS**

669/ AP111402  
EPA REG. NO. 2217-480  
EPA EST. NO. 2217-KS-X  
**MANUFACTURED BY:**





**READ THE ENTIRE LABEL FIRST. OBSERVE ALL PRECAUTIONS AND FOLLOW DIRECTIONS CAREFULLY.**

**PRECAUTIONARY STATEMENTS**

**Hazards to Humans and Domestic Animals**

**WARNING:** Causes substantial but temporary eye injury. Harmful if swallowed, inhaled or absorbed through the skin. Avoid contact with skin, eyes, or clothing.

<b>First Aid Statements</b>	
<b>If in eyes:</b>	<ul style="list-style-type: none"> <li>• Hold eye open and rinse slowly and gently with water for 15 - 20 minutes. Remove contact lenses, if present, after the first 5 minutes, then continue rinsing eye.</li> <li>• Call a poison control center or doctor for treatment advice.</li> </ul>
<b>If on skin or clothing:</b>	<ul style="list-style-type: none"> <li>• Take off contaminated clothing.</li> <li>• Rinse skin immediately with plenty of water for 15 - 20 minutes.</li> <li>• Call a poison control center or doctor for treatment advice.</li> </ul>
<b>If swallowed:</b>	<ul style="list-style-type: none"> <li>• Call a poison control center or doctor immediately for treatment advice.</li> <li>• Have person sip a glass of water if able to swallow.</li> <li>• Do not induce vomiting unless told to do so by the poison control center or doctor.</li> <li>• Do not give anything by mouth to an unconscious person.</li> </ul>
<b>If inhaled:</b>	<ul style="list-style-type: none"> <li>• Move person to fresh air.</li> <li>• If person is not breathing, call 911 or an ambulance, then give artificial respiration, preferably mouth-to-mouth if possible.</li> <li>• Call a poison control center or doctor for treatment advice.</li> </ul>
<p>Have the product container or label with you when calling a poison control center or doctor or going for treatment.</p> <p>You may also call toll-free, 1-877-800-5556 for emergency medical treatment information.</p>	

**Personal Protective Equipment (PPE):**

*Applicators and other handlers must wear:*

- ◆ Long-sleeved shirt and long pants
- ◆ Waterproof gloves
- ◆ Shoes plus socks
- ◆ Protective eyewear

Discard clothing and other absorbent materials that have been drenched or heavily contaminated with this product's concentrate. Do not reuse them. Follow manufacturer's instructions for cleaning/maintaining PPE. If no such instructions for washables, use detergent and hot water. Keep and wash PPE separately from other laundry.

**User Safety Recommendations:**

*Users should:*

- ◆ Wash hands before eating, drinking, chewing gum, using tobacco or using the toilet.
- ◆ Remove clothing immediately if pesticide gets inside. Then wash thoroughly and put on clean clothing.

**ENVIRONMENTAL HAZARDS:**

This pesticide is toxic to fish. Do not apply directly to water, or to areas where surface water is present, or to intertidal areas below the mean high water mark. Drift or runoff from treated areas may be hazardous to aquatic organisms in neighboring aquatic sites. Do not contaminate water by disposing of equipment washwaters.

4/11

### DIRECTIONS FOR USE

It is a violation of Federal law to use this product in a manner inconsistent with its labeling.

Do not apply this product in a way that will contact workers or other persons, either directly or through drift. Only protected handlers may be in the area during application.

For any requirements specific to your State or Tribe, consult the agency responsible for pesticide regulation.

#### AGRICULTURAL USE REQUIREMENTS

Use this product only in accordance with its labeling and with the Worker Protection Standard, 40 CFR part 170. This standard contains requirements for the protection of agricultural workers on farms, forests, nurseries, and greenhouses, and handlers of agricultural pesticides. It contains requirements for training, decontamination, notification, and emergency assistance. It also contains specific instructions and exceptions pertaining to the statements on this label about personal protective equipment (PPE), and restricted-entry intervals. The requirements in this box only apply to uses of this product that are covered by the Worker Protection Standard.

Do not enter or allow worker entry into treated areas during the restricted-entry interval (REI) of 12 hours.

Exception: If product is soil-injected or soil-incorporated, the Worker Protection Standard, under certain circumstances, allows workers to enter the treated area if there will be no contact with anything that has been treated.

PPE required for early entry to treated areas that is permitted under the Worker Protection Standard and that involves contact with anything that has been treated, such as plants, soil, or water, is: coveralls, waterproof gloves, shoes plus socks, and protective eyewear.

Do not apply this product through any type of irrigation system.

Gordon's Weeder Granules must be applied prior to the emergence (pre-emergence) of annual broadleaf and grass weeds. To assure prolonged control (seasonal) of weeds shown below, soil incorporation is essential.

#### NON-AGRICULTURAL USE REQUIREMENTS

The requirements in this box apply to uses of this product that are not within the scope of the Worker Protection Standard for agricultural pesticides 40 CFR Part 170. The WPS applies when this product is used to produce agricultural plants on farms, forests, nurseries, or greenhouses. Noncrop weed control is not within the scope of the Worker Protection Standard.

#### STORAGE AND DISPOSAL

Do not contaminate water, food, feed, other pesticides, fertilizer or seeds.

**PESTICIDE DISPOSAL:** Wastes resulting from the use of this product may be disposed of on site or at an approved waste disposal facility.

**CONTAINER DISPOSAL:**

**Paper and plastic bags:** Completely empty bag by shaking and tapping sides and bottom to loosen any clinging particles into application equipment. Then dispose of bags in a sanitary landfill, or by incineration, or if allowed by State and local authorities by burning. If burned stay out of smoke.

**Plastic Containers:** Triple rinse (or equivalent). Then offer for recycling or reconditioning, or structure and dispose of in a sanitary landfill, or incineration, or, if allowed by state and local authorities, by burning. If burned, stay out of smoke.

GRASS AND BROADLEAF WEEDS CONTROLLED	
Annual Grasses	Annual Broadleaf Weeds
Annual bluegrass	Carpetweed
Annual ryegrass	Chickweed
Barnyardgrass (Watergrass)	Florida pusley (Florida purslane)
Bromegrass	Henbit
Cheat	Knotweed
Crabgrass	Lambsquarters (Goosefoot)
Foxtails	Pigweed
Johnsongrass (from seed)	Puncturevine
Junglerice	Purslane
Sandbur	Stinging Nettle
Signalgrass	
Sprangletop	
Stinkgrass	
Wildcane (shattercane)	
Wild oat (partial control)	
Woolly cupgrass	

### GENERAL DIRECTIONS

- ◆ Gordon's Weeder Granules is a pre-emergence herbicide for control of many annual grasses and broadleaf weeds.
- ◆ Gordon's Weeder Granules controls weeds by killing germinating seeds and does not control established weeds.
- ◆ Gordon's Weeder Granules provides effective weed control when applied and incorporated into the soil surface.
- ◆ Gordon's Weeder Granules is recommended for use on a wide variety of ornamentals (trees, shrubs, and flowers), fruits, nuts, and vegetables. See below for specific uses and instructions.

### - APPLICATION DIRECTIONS -

Apply Gordon's Weeder Granules to a smooth soil surface to assure uniform distribution. Excessive groundcover such as crop residues or existing weeds can interfere with the incorporation of this product into the soil and should be removed prior to application. Apply Gordon's Weeder Granules prior to the germination of weed seeds or to clean-cultivated, weed-free areas.

Apply Gordon's Weeder Granules in a "ready-to-use" shaker container or with hand held or hand propelled rotary or drop-type granular applicator. Prior to use, calibrate the equipment according to the manufacturer's directions and check frequently during application to be sure equipment is working properly and distributing the granules uniformly.

For small areas, use a "ready-to-use" container or a shaker-type applicator (such as a coffee can with holes punched in the bottom) and distribute the granules uniformly. Do not apply more than the recommended amount.

To obtain optimum weed control Gordon's Weeder Granules needs to be incorporated into the soil by overhead irrigation (i.e. sprinkler or rainfall) or mechanical incorporation (i.e. rake or rototiller) to a depth of 2 to 3 inches within a few hours after surface application. Application rates for various uses and incorporation methods differ. See below for specific use instructions.

Under normal growing conditions and if applied according to directions, Gordon's Weeder Granules will not harm the treated crop. Crop injury or soil residue may result from over-application. Erratic weed control or crop injury may result from uneven application or improper soil incorporation of Gordon's Weeder Granules. Seedling diseases, cold weather, deep planting, excessive moisture, high salt concentration or drought may weaken crop seedlings and increase the possibility of damage from Gordon's Weeder Granules. Under these conditions, delayed crop development or reduced yields may result. Gordon's Weeder Granules is not recommended for use on muck soils.

Seeded crops (vegetables or flowers) other than those listed on this label for preplant soil incorporation of Gordon's Weeder Granules should not be planted within 5 months following the application.

6/11

**Use Instructions for Ornamental Trees, Groundcovers, Shrubs, and Flowers:**

Apply Gordon's Weeder Granules prior to planting new nursery stock liners, ornamental trees, ornamental groundcovers, woody shrubs, and gladiolus (corms greater than 1 inch diameter). Gordon's Weeder Granules may also be applied to these and other listed ornamentals (see below) after they are established.

Apply Gordon's Weeder Granules to a weed free, smooth, soil surface on ornamental beds or around established plants. Do not apply to established plantings when the foliage is wet.

The broadcast application rate of Gordon's Weeder Granules for these crops is 1.0 ounce per 100 square feet. Optimum weed control performance will be obtained when followed by overhead irrigation (sprinkler or rainfall) within a few hours after application.

**ORNAMENTAL TREES**

Common Name	Scientific Name
Almond	<i>Prunus dulcis</i>
Apple, Crabapple	<i>Malus spp.</i>
Apricot	<i>Prunus armeniaca</i>
Ash, White	<i>Fraxinus americana</i>
Bald cypress	<i>Taxodium distichum</i>
Birch, European White	<i>Betula pendula</i>
Black gum	<i>Nyssa sylvatica</i>
Cherry	<i>Prunus spp.</i>
Chestnut, Chinese	<i>Castanea mollissima</i>
Cottonwood	<i>Populus deltoides</i>
Dogwood, Flowering	<i>Cornus florida</i>
Dogwood, Kousa	<i>Cornus kousa</i>
Douglas fir	<i>Pseudotsuga menziesii</i>
Fir, Balsam	<i>Abies balsamea</i>
Hemlock, Canada	<i>Tsuga canadensis</i>
Honey locust	<i>Gleditsia triacanthos</i>
Larch, Japanese	<i>Larix kaempferi</i>
Locust, Black	<i>Robinia pseudoacacia</i>
Maple, Norway	<i>Acer platanoides</i>
Maple, Red	<i>Acer rubrum</i>
Maple, Silver	<i>Acer saccharinum</i>
Maple, Sugar	<i>Acer saccharum</i>
Oak, Pin	<i>Quercus palustris</i>
Oak, Red	<i>Quercus rubra</i>
Oak, Scarlet	<i>Quercus coccinea</i>
Peach	<i>Prunus persica</i>
Pine, Austrian	<i>Pinus nigra</i>
Pine, Eastern White	<i>Pinus strobus</i>
Pine, Japanese Black	<i>Pinus thunbergiana</i>
Pine, Loblolly	<i>Pinus taeda</i>
Pine, Red	<i>Pinus resinosa</i>
Pine, Scotch	<i>Pinus sylvestris</i>
Planetree, London	<i>Platanus acerifolia</i>
Plum	<i>Prunus spp.</i>
Redbud, Eastern	<i>Cercis canadensis</i>
Spruce, Colorado	<i>Picea pungens</i>
Spruce, Norway	<i>Picea abies</i>
Spruce, White	<i>Picea glauca</i>
Sweet gum	<i>Liquidambar styraciflua</i>
Sycamore	<i>Platanus occidentalis</i>
Tulip tree	<i>Liriodendron tulipifera</i>
Walnut, Black	<i>Juglans nigra</i>

## ORNAMENTAL GROUNDCOVER PLANTING

Common Name	Scientific Name
Aarons beard	<i>Hypericum calycinum</i>
Bellflower, Adriatic	<i>Campanula elatines</i>
Bellflower, Poscharsky	<i>Campanula poscharskyana</i>
Ceanothus	<i>Ceanothus spp.</i>
Coreopsis	<i>Coreopsis spp.</i>
Cotoneaster	<i>Cotoneaster spp.</i>
Coyote Brush	<i>Baccharis pilularis</i>
Crown Vetch	<i>Coronilla varia</i>
Daisy, Trailing African	<i>Osteospermum fruticosum</i>
Fern, Asparagus	<i>Asparagus densiflorus</i>
Gazania	<i>Gazania spp.</i>
Germander	<i>Teucrium chamaedrys</i>
Ice Plant, Largeleaf	<i>Carpobrotus edulis</i>
Ivy, Algerian	<i>Hedera canariensis</i>
Ivy, English	<i>Hedera helix</i>
Lily-of-the-Nile	<i>Agapanthus spp.</i>
Lilyturf, Bigblue	<i>Liriope muscari</i>
Marigold	<i>Tagetes spp.</i>
Myoporum	<i>Myoporum laetum</i>
Plumbago, Dwarf	<i>Ceratostigma plumbaginoides</i>
Rosemary	<i>Rosmarinus officinalis</i>
Rupturewort	<i>Hemiaria glabra</i>
Snow-in-Summer	<i>Cerastium tomentosum</i>
Speedwell	<i>Veronica spp.</i>
St. Johnswort	<i>Hypericum coris</i>
Stonecrop (Sedum)	<i>Sedum spp.</i>
Strawberry, Beach	<i>Fragaria chiloensis</i>
Thrift	<i>America maritima</i>
Verbena	<i>Verbena spp.</i>
Wirevine, Creeping	<i>Muehlenbeckia axillaris</i>
Yarrow, Woolly	<i>Achillea tomentosa</i>
Zoysiagrass	<i>Zoysia tenuifolia</i>

## ORNAMENTAL WOODY SHRUBS

Common Name	Scientific Name
Andromeda, Japanese	<i>Pieris japonica</i>
Arborvitae, American	<i>Thuja occidentalis</i>
Azalea	<i>Rhododendron spp.</i>
Barberry, Japanese	<i>Berberis thunbergii</i>
Barberry, Mento	<i>Berberis mentorensis</i>
Boxwood, Common	<i>Buxus sempervirens</i>
Boxwood, Harlands	<i>Buxus harlandi</i>
Boxwood, Littleleaf	<i>Buxus microphylla</i>
Camellia, Japanese	<i>Camellia japonica</i>
Camellia, Sasanqua	<i>Camellia sasanqua</i>
Cherry laurel, American	<i>Prunus caroliniana</i>
Cinquefoil	<i>Potentilla spp.</i>
Cleyera, Japanese	<i>Cleyera japonica</i>
Cotoneaster, Cranberry	<i>Cotoneaster apiculata</i>
Cotoneaster, Zabel	<i>Cotoneaster zabelii</i>
Deutzia	<i>Deutzia spp.</i>
Elaeagnus, Silverberry	<i>Elaeagnus pungens</i>
Euonymus, Spreading	<i>Euonymus kiautschovica</i>
Euonymus, Winged	<i>Euonymus alatus</i>
Euonymus, Wintercreeper	<i>Euonymus fortunei</i>
Firethorn	<i>Pyracantha spp.</i>
Forsythia	<i>Forsythia spp.</i>
Guava, Pineapple	<i>Feijoa sellowiana</i>
Holly	<i>Ilex spp.</i>
Honeysuckle	<i>Lonicera spp.</i>
Indian hawthorn	<i>Raphiolepis indica</i>
Juniper	<i>Juniperus spp.</i>
Laurel, Mountain	<i>Kamia latifolia</i>
Lilac, Common	<i>Syringa vulgaris</i>
Mockorange	<i>Philadelphus spp.</i>
Pittosporum, Japanese	<i>Pittosporum tobira</i>
Privet	<i>Ligustrum spp.</i>
Red cedar, Eastern	<i>Juniperus virginiana</i>
Rhododendron	<i>Rhododendron spp.</i>
Spiraea, Vanhoutte	<i>Spiraea vanhouttei</i>
Viburnum	<i>Viburnum spp.</i>
Weigela	<i>Weigela spp.</i>
Willow	<i>Salix spp.</i>
Yew, Anglojap	<i>Taxus media</i>
Yew, Japanese	<i>Taxus cuspidata</i>
Yew, Southern	<i>Podocarpus macrophyllus</i>



**ROSES AND OTHER ESTABLISHED FLOWERS**

African Daisy	Four O'Clock	Poppy, California
Aster (perennial)	Gaillardia	Portulaca
Balsam	Gladiolus	Rose
Blackeyed Susan	Golden Glow	Salvia
Calendula	Impatiens	Shasta Daisy
Carnation	Ixora	Snapdragon
Centaurea, Velvet	Lobelia	Snow on the Mountain
Chrysanthemum	Lupine	Stock
Coreopsis	Marigold	Sunflower
Cornflower	Marigold, Cape	Sweet Alyssum
Cosmos	Morningglory	Sweet Pea
Dahlia	Nasturtium	Sweet Sultan
Dianthus	Nicotiana	Sweet William
Dusty Miller	Petunia	Vinca
Floss Flower	Phlox	Yarrow
Forget-Me-Not	Pincushion Flower	Zinnia

**Instructions for Fruit, Vegetable, Nut, and Vineyard Crops:**

For control of weeds in the listed crops in this section use the following application rate table.

Application Rates	
Soil Texture	Broadcast Application Rates, (ozs./1,000 sq.ft.)
Sand, loamy sand, sandy loam	12.5 fl. oz. (1 lb./1,280 sq.ft.)
Loam, silt, silt loam	16.66 oz. (1 lb./ 960 sq.ft.)
Clay, clay loam, sandy clay	25 fl. oz. (1 lb./ 640 sq.ft.)

Apply and incorporate the indicated amount of Gordon's Weeder Granules to a smooth, weed free, soil surface. Optimum weed control performance will be obtained if Gordon's Weeder Granules is mechanically incorporated, such as with a rake or rototiller, 2 to 3 inches deep within a few hours after application.

Gordon's Weeder Granules is recommended for application to the following crops at the indicated stage of growth.

<b>A. BEFORE PLANTING</b>
Beans (Castor, Dry, Guar, Lima, Mungbean and Snap)
Carrot
Celery, direct seeded or transplant
Chicory/Endive
Cole Crops (Broccoli, Brussels Sprout, Cabbage and Cauliflower), transplant
Fruit and Nut Crops ( Almond, Citrus, Grape, Nectarine, Peach, Pecan, Plum, Prune, Walnut)
Greens (Collard, Kale and Mustard)
Okra
Peas (Dry and English)
Pepper, transplant
Radish
Sunflower
Tomato, transplant

10/11

<b>B. AT PLANTING</b>
Celery, direct seeded or transplant
<b>C. AFTER PLANTING</b>
Asparagus, established Apply and incorporate prior to spear emergence in the spring.
Celery, direct seeded & transplant
Cucurbit (Cantaloupe, Cucumber & Watermelon) Apply and incorporate between the rows and beneath plants in the 3 to 4 true leaf stage.
Fruit and Nut Crops (Almond, Citrus, Grape, Nectarine, Peach, Pecan, Plum, Prune, Walnut), established Apply 25 to 50 ounces per 1,000 square feet on all soil types. Do not apply to grapes within 60 days of harvest.
Onion (Grown for dry bulb only) Avoid covering exposed bulbs with treated soil or injury may occur.
Potato Apply after planting, prior to crop emergence, or after plants have emerged. Do not cover foliage with treated soil if applied after emergence.
Tomato, direct seeded Apply at thinning after plants are 2 to 3 inches tall to soil between rows and beneath plants and incorporate.

**LIMITED WARRANTY AND DISCLAIMER.**

The manufacturer warrants only that the chemical composition of this product conforms to the ingredient statement given on the label, and that the product is reasonably suited for the labeled use when applied according to the Directions for Use.

THE MANUFACTURER NEITHER MAKES NOR INTENDS ANY OTHER EXPRESS OR IMPLIED WARRANTIES, INCLUDING ANY WARRANTY OF MERCHANTABILITY OR FITNESS FOR A PARTICULAR PURPOSE, WHICH ARE EXPRESSLY DISCLAIMED. This limited warranty does not extend to the use of the product inconsistent with label instructions, warnings or cautions, or to use of the product under abnormal conditions such as drought, excessive rainfall, tornadoes, hurricanes, etc. These factors are beyond the control of the manufacturer or the seller. Any damages arising from a breach of the manufacturer's warranty shall be limited to direct damages, and shall not include indirect or consequential damages such as loss of profits or values, except as otherwise provided by law.

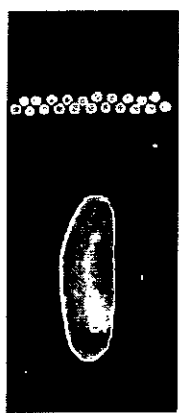
The terms of this Limited Warranty and Disclaimer cannot be varied by any written or verbal statements or agreements. No employee or agent of the seller is authorized to vary or exceed the terms of this Limited Warranty and Disclaimer in any manner.

## APPENDIX

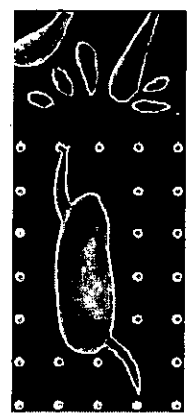
### Advertising claims that may be presented on the container label.

- Stop(s) weeds before they start.
- Stops weeds before they start for a beautiful weed-free garden.
- Stops weeds before they start by preventing weed seeds from germinating.
- For use around flowers, vegetables, trees and shrubs.
- For use on flowers, vegetables and more.
- Easy-grip handle and shaker makes application quick and convenient.
- Easy to accurately apply granules exactly where you want.
- Easy to apply granules.
- Ready-To-Use.
- No mixing, no spills, no mess.
- Pre-emergent herbicide for control of most annual grasses and broadleaf weeds.
- Recommended for use with flowers, roses, shrubs, trees, vegetables, fruits and nuts.
- Use on flowers, roses, shrubs, trees, vegetables, fruits and nuts.
- Control weeds around flowers, roses, shrubs, trees, vegetables, fruits and nuts.
- Easy to apply granular formula only takes a few minutes.
- Don't pull weeds, prevent them!
- Peel open for [See next page for] [See attached booklet for] First Aid and additional Precautionary Statements.

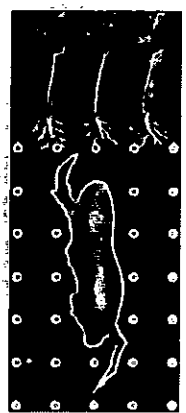
### Optional graphics that may be presented on the container labeling::



Sprinkle Weed Preventer Granules



Activate with 1/2 - 1" of water or rain, or uniformly incorporate in soil.



Germinating weed seeds are shut down before you see them.