

Do not allow DANDELION AND BROADLEAF WEED KILLER spray to get on vegetables or ornamental plants since injury may result. Do not use on Centipede or St. Augustine Grass or on lawns on which a fine desirable Bent Grass or Clovers are present.

- |            |               |              |
|------------|---------------|--------------|
| Buck, or   | Lambquarter   | Speedwell    |
| Chicory    | Mallow        | Pigweed      |
| Clover     | Morning Glory | Wild Carrot  |
| Dandelion  | Peppergrass   | Wild Onion   |
| Dock       | Pigweed       | Wild Garlic  |
| Ground Ivy | Plantain      | Wild Lettuce |
| Healall    | Purshane      | Yarrow       |
| Poison Ivy | Poison Oak    |              |

**WHEN TO USE**

**GORDON'S**  
prescription for care of lawns

**dandelion  
and  
broadleaf  
weed killer**

8 oz. in 3  
1 pint in  
\*\*For use  
with sprayer  
level for  
to the 1

Lawn  
type of

Use

**kills: knotweed, sheep sorrel, chickweed  
oxalis, spotted spurge, henbit**

**contains DICAMBA\***

**ACTIVE INGREDIENTS:**

- |  |        |
|--|--------|
| Dimethylamine salt of Dicamba                        | 3.43%  |
| Dimethylamine salt of related compounds              | 6.1%   |
| Dimethylamine salt of 2,4-dichlorophenoxyacetic acid | 13.72% |

**INERT INGREDIENTS**

82.24%

**TOTAL 100.00%**

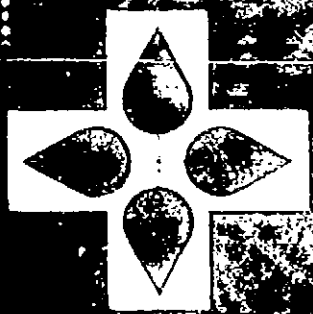
- |   |       |                       |
|---|-------|-----------------------|
| 3,6-dichloro-o-anisic acid equivalent     | 2.85% | or 1/4 pound per gal. |
| 2,4-dichlorophenoxyacetic acid equivalent | 11.4% | or 1 pound per gal.   |

**CAUTION: Keep Out of Reach of Children**

See back panel for additional cautions.

**CONTENTS 1 GALLON**

MANUFACTURED BY GORDON CHEMICAL CO., INC. KANSAS CITY, KANSAS



# GORDON'S

prescription for care of lawns

# andelion and roadleaf weed killer

8 oz. in 3 gals.      16 tblsp. for 12 gals.    2700 sq. ft.  
1 pint in 6 gals.    1 pint for 24 gals.    5500 sq. ft.

\*\*For Lawn Hose Sprayers dilute the amount shown above with enough water to fill the sprayer bottle to the 2 gal. level for 300 sq. ft. to the 6 gal. level for 1300 sq. ft. to the 12 gal. level for 2700 sq. ft.

### TO SPOT-SPRAY WEEDS

Lawn Hose Sprayers are not suited for this type of treatment. Use a pressure sprayer.

Mix 8 oz. of Super 6  
Lawn Weed Killer in 3 gals.  
water and spray each weed  
to point of spray run-off.

Manufactured by Gordon Chemical Co., Inc., Kansas City, Mo.

otweed, sheep sorrel, chickweed  
alis, spotted spurge, henbit

contains DICAMBA

### INGREDIENTS:

ine salt of Dicamba  
ine salt of related compounds  
ine salt of 2,4-dichlorophenoxyacetic acid  
INGREDIENTS

3.13%  
6.1%  
13.72%  
82.24%

TOTAL 100.00%

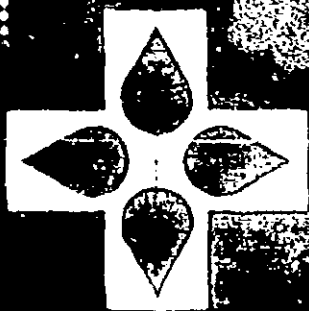
o-anisic acid equivalent 2.85% or 1/4 pound per gal.  
phenoxyacetic acid equivalent 11.4% or 1 pound per gal.

**CAUTION:** Keep Out of Reach of Children

See back panel for additional cautions

**CONTENTS 1 GALLON**

Manufactured by GORDON CHEMICAL CO., INC., KANSAS CITY, KANSAS



**GORDON'S**

*prescription for care of lawns*

# dandelion and broadleaf weed killer

8 oz. in 3 gals.      16 tblsp. for 12 gal's      2700 sq. ft.  
1 pint in 6 gals.      1 pint for 24 gals.      5500 sq. ft.

\*\*For Lawn Hose Sprayers dilute the amount shown above with enough water to fill the sprayer bottle to the 12 gal. level for 300 sq. ft. to the 6 gal. level for 1200 sq. ft. to the 12 gal. level for 2700 sq. ft.

**TO SPOT-SPRAY WEEDS**

Lawn Hose Sprayers at any type of treatment. Use a prescription.

Mix 8 oz. of Super Lawn Weed Killer in 3 gallons of water and spray each weed to point of spray run.

Make sure to use Gordon's Spot-Sprayer.

knotweed, sheep sorrel, chickweed,  
oxalis, spotted spurge, henbit

contains **DICAMBA**

**INGREDIENTS:**

ethylamine salt of Dicamba	37.43%
ethylamine salt of related compounds	2.61%
ethylamine salt of 2,4-dichlorophenoxyacetic acid	13.72%
<b>INGREDIENTS</b>	<b>82.24%</b>
<b>TOTAL</b>	<b>100.00%</b>

chloro-o-anisic acid equivalent 2.85% or 1/4 pound per gallon  
chlorophenoxyacetic acid equivalent 11.4% or 1 pound per gallon

**CAUTION:** Keep Out of Reach of Children  
See back panel for additional cautions

**CONTENTS - 1 GALLON**

MANUFACTURED BY GORDON CHEMICAL CO., INC., KANSAS CITY, KANSAS

DI

## FOR TO

**To prevent sucker de  
and burley tobacco.** SUC  
hibitor offers a new met  
growth by keeping suck  
than by killing them  
absorbed and moves in  
spraying the whole plan  
results are obtained by  
to 1/2 of the plant. It is  
equal amounts of SUCKE  
time of topping

**When to spray:** Sat  
depends on correct tim

a. If all plants flower  
proceed as follows. As s  
full flower, top, pull all s  
ing plants and spray  
onto the entire field with  
(see Notes 1-9).

b. If there is a wid  
flowering, use the follow

1. Go through the fie  
flowering plants

2. Wait until the ren  
flower, top them, remo  
entire field, and apply  
hours after topping (see  
to be harvested should  
at time of spraying

**How to spray.** SUCK  
with either tractor or  
sprayer, or with a shou

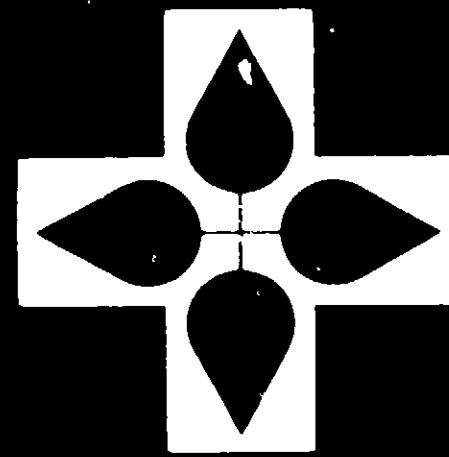
a. Tractor or mule-d  
ers. Any number of noz  
be applied in the same  
spraying one or more  
upper 1/2 to 3/4 of plant

b. Compressed air  
single nozzle spraying  
side of each tobacco  
constant rate. Use up-ar  
nozzle to moisten uppe  
plant. Apply equal spra

**Amount to use:** 1  
1 000 plants. Example:  
BAN for 6 000 plants,  
SUCKER BAN for 8 000  
not less than 20 gallons  
20 to 50 gallons of wat  
(see Note 9).

## FOR OTHI

**To control sprouting**  
Apply 5 1/2 pints SUCKE  
of water per acre with  
plane application can a  
should be applied wh  
mature have 5 to 8 g  
soft enough for the top  
already done so. The  
when 50 percent of the  
tops are still green. This  
about 10 days to two w  
Green tops are essent  
SUCKER BAN CAUTION  
ing of edible onions. S



Do not allow DANDELION AND BROADLEAF WEED KILLER spray to get on vegetables or ornamental plants since injury may result. Do not use on Centipede or St. Augustine Grass or on lawns or turfs where desirable Bent Grass or Clovers are present.

- |            |               |              |
|------------|---------------|--------------|
| Buckhorn   | Lambsquarter  | Speedwell    |
| Chicory    | Mallow        | Ragweed      |
| Clover     | Morning Glory | Wild Carrot  |
| Dandelion  | Peppergrass   | Wild Onion   |
| Dock       | Pigweed       | Wild Garlic  |
| Ground Ivy | Plantain      | Wild Lettuce |
| Healall    | Purslane      | Yarrow       |
| Poison Ivy | Poison Oak    |              |

WHEN TO USE:

ACCEPTED  
Apr 25, 1969  
UNDER NO. 2217-422  
COMMERCIAL

**GORDON'S**  
*prescription for care of lawns*

# dandelion and broadleaf weed killer

8 oz. in 3 gals.      16 tblsp. for 12 gals.    2700 sq. ft.  
1 pint in 6 gals.    1 pint for 24 gals.    5500 sq. ft.  
\*\*For Lawn Hose Sprayers dilute the amount shown above with enough water to fill the sprayer bottle to the 2 gal. level for 300 sq. ft. to the 6 gal. level for 1300 sq. ft. to the 12 gal. level for 2700 sq. ft.

**TO SPOT-SPRAY WEEDS**

Lawn Hose Sprayers are not suited for this type of treatment. Use a pressure sprayer.

Mix 8 oz. of Super 6  
Lawn Weed Killer in 3 gals.  
water and spray each weed  
to point of spray run-off.

Make sure to use Gordon's Spreader Sticker so that each weed will be thoroughly wet.

**kills: knotweed, sheep sorrel, chickweed  
oxalis, spotted spurge, henbit**

contains DICAMBA\*

**ACTIVE INGREDIENTS**

- |  |       |
|--|-------|
| Dimethylamine salt of Dicamba*                         | 5.2%  |
| Dimethylamine salt of related compounds*               | 6.1%  |
| Dimethylamine salt of 2,4 dichlorophenoxyacetic acid** | 12.7% |

**INERT INGREDIENTS**

82.24%

**TOTAL 100.00%**

\* 3.6 dichloro o anisic acid equivalent 2.85% or 1/4 pound per gal

\*\* 2.4 dichlorophenoxyacetic acid equivalent 1.14% or 1/8 pound per gal

**CAUTION: Keep Out of Reach of Children**

See back panel for additional cautions

**CONTENTS 1 GALLON**

MANUFACTURED BY GORDON CHEMICAL CO., INC. KANSAS CITY, KANSAS



**DANDELION AND BROADLEAF**  
 KILLER. Kills dandelions, broadleaves, or  
 other weeds in lawns. Kills them in 10 to 15 days. D  
 and B is the only dandelion and broadleaf killer  
 that kills them in 10 to 15 days. Kills them in  
 10 to 15 days.

**GORDON'S**  
*prescription for care of lawns*

# dandelion and broadleaf weed killer

8 oz. in 3 g.  
 1 pint in 6.  
 \*\*For Lawns  
 with enough  
 level for 12

- |            |               |              |
|------------|---------------|--------------|
| Buckhorn   | Lamb quarter  | Speedwell    |
| Chicory    | Mallow        | Ragweed      |
| Clover     | Morning Glory | Wild Carrot  |
| Dandelion  | Pigweed       | Wild Onion   |
| Dock       | Plantain      | Wild Garlic  |
| Ground Ivy | Purslane      | Wild Lettuce |
| Henbit     | Portulaca     |              |
| Person Ivy | Portulaca     |              |

Lawn H  
 type of

WHEN TO USE:

Make su  
 that each

**kills: knotweed, sheep sorrel, chickweed  
 oxalis, spotted spurge, henbit**

contains **DICAMBA\***

**ACTIVE INGREDIENTS:**

Dimethylamine salt of Dicamba	3.43%
Dimethylamine salt of related compounds	.61%
Dimethylamine salt of 2,4-dichlorophenoxyacetic acid	13.72%

**INERT INGREDIENTS** ..... 82.24%

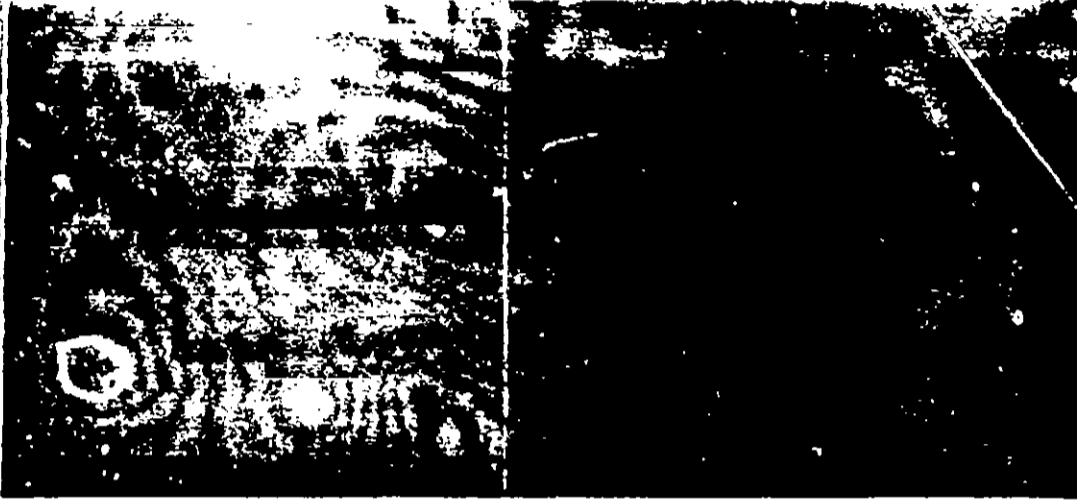
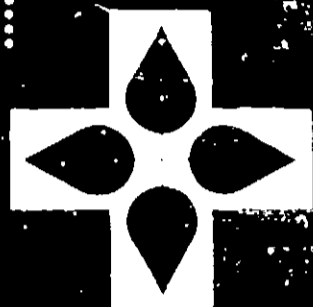
**TOTAL 100.00%**

\*3,6-dichloro-o-anisic acid equivalent 2.85% or 1/4 pound per gal.  
 \*\*2,4-dichlorophenoxyacetic acid equivalent 11.4% or 1 pound per gal.

**CAUTION:** Keep Out of Reach of Children  
 See back panel for additional cautions

**CONTENTS 1 GALLON**

MANUFACTURED BY GORDON CHEMICAL CO., INC., KANSAS CITY, KANSAS



**GORDON'S**

*prescription for care of lawns*

# dandelion and broadleaf weed killer

8 oz in 3 gals.      16 tblsp for 12 gals      2700 sq ft.

1 pint in 6 gals.      1 pint for 24 gals      5500 sq ft.

\*\*For Lawn Mower Sprayers dilute the amount shown above with enough water to fill the sprayer bottle to the 2 gal level for 300 sq ft to the 6 gal level for 1300 sq ft to the 12 gal level for 2700 sq ft.

### TO SPOT SPRAY WEEDS

Lawn Mower Sprayers are not suited for this type of treatment. Use a pressure sprayer.

Mix 8 oz of Super 6  
Lawn Weed Killer in 3 gals  
water and spray each weed  
to point of spray runoff

Take care to use Gordon's Spreader Sticker so that each weed will be thoroughly wet.

**kills: knotweed, sheep sorrel, chickweed  
oxalis, spotted spurge, henbit**

contains **DICAMBA\***

#### ACTIVE INGREDIENTS:

Dimethylamine salt of Dicamba\* ..... 3.43%

Dimethylamine salt of related compounds\* ..... .81%

Dimethylamine salt of 2,4-dichlorophenoxyacetic acid\*\* ..... 13.72%

INERT INGREDIENTS ..... 82.24%

**TOTAL 100.00%**

\*3,6-dichloro-o-anisic acid equivalent 2.85% or 1/4 pound per gal.

\*\*2,4-dichlorophenoxyacetic acid equivalent 11.4% or 1 pound per gal.

**CAUTION: Keep Out of Reach of Children**  
See back panel for additional cautions

**CONTENTS 1 GALLON**

MANUFACTURED BY GORDON CHEMICAL CO., INC., KANSAS CITY, KANSAS

