

W
A
S
H
I
N
G



and stables. Use no more than 1 pint per 1,000 square feet. This is not a residual spray therefore treat weekly or as needed for control of flies and fleas. Do not contaminate food or food utensils.

Do not use in edible products areas of food processing plants, restaurants, or other areas where food is commercially prepared or processed. Do not use in serving areas while food is exposed.

WARNING: May be fatal if swallowed, inhaled or absorbed through the skin. Avoid contact with skin. Wash thoroughly with soap and water after handling and before eating or smoking. If swallowed, induce vomiting immediately. Do not allow the spray mist to contaminate milk or milking utensils.

VAPONA[®] INSECTICIDE

DAIRY CATTLE SPRAY

Stable Flies, make sure to spray leg areas and particularly ankles. Repeat daily as needed for control. Do not apply more than 2 ounces per animal daily. For walk-thru mist sprayers, set to treat animals at rate not to exceed 2 ounces daily. **CAUTION:** Avoid wetting the hide of animals. Do not apply regularly to calves under 6 months of age. Brahman cattle should not be treated as they may show hypersensitivity to organic phosphates.

OVERHEAD MIST DISPENSERS For control of flies, gnats and mosquitoes in milkhouses and barns, use 1 pint for each 8,000 cubic feet. Do not contaminate feed or milk utensils. If a program of spraying animals directly is employed daily, do

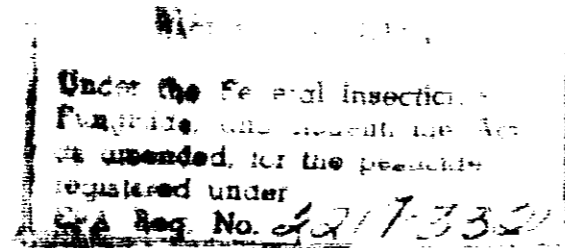
DAIRY CATTLE SPRAY

Cover feed and feed troughs or remove before spraying. Keep out of reach of children. This product is an organic phosphate which is a cholinesterase inhibitor and if poisoning should occur, CALL A PHYSICIAN IMMEDIATELY. ATROPINE IS ANTIDOTAL

DO NOT USE, POUR, SPILL, OR STORE NEAR HEAT OR OPEN FLAME.

ENVIRONMENTAL CAUTIONS: This product is toxic to fish, birds, and other wildlife. Keep out of any body of water. Do not apply where runoff is likely to occur. Do not apply when weather conditions favor drift from areas treated. Do not contaminate water by cleaning of equipment, or disposal of wastes. Apply this product only as specified on this label.

E.P.A. Est. No. 2217-KS-1



Ready-To-Use for FACE FLIES

Stable Fly—House Fly—Horn Fly

ACTIVE INGREDIENTS

2,2-Dichlorovinyl dimethyl phosphate* 0.93%

Related Compounds* 0.07%

Insecticide Base Oil
(Petroleum Derivative) 98.93%

INERT INGREDIENTS 0.07%

Total 100.00%

*Equivalent to 1% Vapona Insecticide

*VAPONA® Insecticide a SHELL Registered Trademark

WARNING: Keep Out of Reach of Children
See Side Panel for Additional Warnings

NET CONTENTS

GALLONS

not fog within 8 hours of direct applications.

CONTAINER DISPOSAL: Rinse equipment and containers and dispose of wastes by burying in non-croplands away from water supplies. Containers should be disposed by punching holes in them and burying with wastes.

NOTICE: Seller warrants that this product conforms to the ingredient statement on the label. Since conditions of use, such as weather, compatibility with other chemicals, and condition of application equipment, will vary, Seller makes no claims other than those stated on this label.

965-1274

E.P.A. Reg. No. 2217-332-AA