

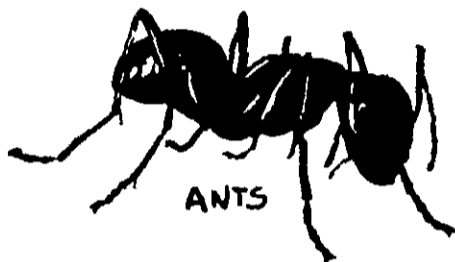
# Dursban<sup>®</sup> Granules

## LAWN INSECT CONTROL

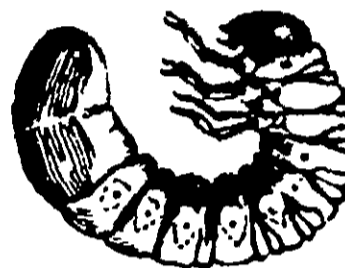
5 POUNDS TREATS 1,000 SQ. FT.



CHINCH BUGS



ANTS



WHITE GRUBS

**BEST DOCUMENT AVAILABLE**

For Control of Chinch Bugs, Sod Webworms (Lawn Moths), Ants, Armyworms, Brown Dog Ticks, Crickets, Cutworms, Earwigs, Fleas, Sowbugs (Pillbugs), Certain White Grubs and Hyperodes (Turfgrass) Weevils Infesting Home Lawns and Other Ornamental and Recreational Turf Grass Areas.

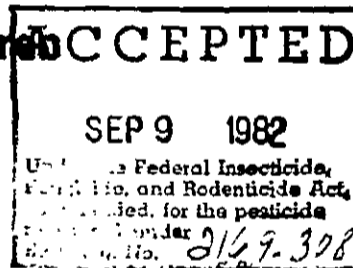
**Keep Out of Reach of Children**  
**CAUTION**

Read Complete Cautions on Back Panel

**ACTIVE INGREDIENT:**

Chlorpyrifos (O, O-diethyl O-(3,5,6-trichloro-2-pyridyl) phosphorothioate)

**INERT INGREDIENTS:**



99.5%

TOTAL 100.00%

\*DURSBAN<sup>®</sup> — Trademark of The Dow Chemical Company  
U. S. Patent No. 3,244,586

EPA REGISTRATION NO. 2169-  
EPA Est. 2169-KS1

**NET WEIGHT 25 POUNDS — 5 POUNDS —**

Patterson Green-Up Company  
Div. Curry Cartwright, Inc.  
1331 Union Avenue Box 4029  
Kansas City, MO. 64101

# Dursban<sup>5</sup> Granules

## DIRECTIONS FOR USE

IT IS A VIOLATION OF FEDERAL LAW TO USE THIS PRODUCT IN A MANNER INCONSISTENT WITH ITS LABELING.

### Sod Webworms, etc., 5,000 sq. ft. Rate

To control chinch bugs, sod webworms, ants, armyworms, brown dog ticks, crickets, cutworms, earwigs, fleas, and sowbugs, uniformly apply 5 lb./1,000 sq. ft. or 25 lbs. to cover 5,000 sq. ft. of noncrop turf grass area using any hand or power-operated gravity or rotary type spreader designed for application of granular materials. Treat when insects first appear; re-treat as needed. To help obtain uniform distribution, apply one-half the required amount of product in one direction; then apply the balance at a right angle. Immediately after application, thoroughly water the treated turf to wash the insecticide into the zone of insect infestation.

### White Grubs, 2,500 sq. ft. Rate

To control certain white grubs (larvae of European chafer and Japanese beetle) use 25 pounds of this product per 2,500 sq. ft. Apply the granules uniformly over the area treated followed immediately by thorough watering to wash the insecticide into the turf. For best results treat when grubs are young and actively feeding near the soil surface, usually during late July and August.

To control Hyperodes (turfgrass) weevils uniformly apply 10 pounds of granules per 2500 sq. ft. as directed above. Treat suspected problem areas in mid-April and again in mid-May. Consult your local Agricultural Extension Service specialist for best time to treat in your area.

### SPREADER SETTINGS FOR ONCE OVER APPLICATION

	2,500 sq. ft. Grub Control	5,000 sq. ft. Sod Webworms
Scott	7 1/2 - 8	6
Central	10	9
Cyclone	5	4 1/2
Sears	10	9

Walking speed and spreader condition may require setting adjustments.

## PRECAUTIONARY STATEMENTS

Hazards to Humans and Domestic Animals

### CAUTION

BEST DOCUMENT AVAILABLE

KEEP OUT OF REACH OF CHILDREN  
MAY BE HARMFUL IF SWALLOWED

Do not take internally. Avoid contact with eyes, skin, and clothing. Wash thoroughly after handling. Wash contaminated clothing before reuse. Flush contaminated eyes with plenty of water and get medical attention if irritation develops or persists. Keep children and pets off treated areas until this material is washed into the soil and grass is dry.

**NOTE TO PHYSICIAN:** Chlorpyrifos is a cholinesterase inhibitor. Treat symptomatically. Atropine is an antidote.

### ENVIRONMENTAL HAZARDS

This product is toxic to fish, birds, and other wildlife. Keep out of any body of water. Do not contaminate water by cleaning of equipment or disposal of wastes. Do not apply where runoff is likely to occur. Use this product only as specified on this label.

## STORAGE AND DISPOSAL

**Storage:** Keep away from food, feedstuffs, and domestic water supplies. Keep container closed.

**Disposal:** Do not reuse empty container. Wrap container and put in trash collection.

### NOTICE

Buyer assumes all risk and liability of use, storage and/or handling of this material not in accordance with the terms of this label.

EPA Reg 2169      EPA Est. 2169-KS-1  
Patterson Green-Up Company - Div. Curry Cartwright, Inc.  
Kansas City Mo. 64101