

DIRECTIONS FOR USE AND CONDITIONS OF SALE AND WARRANTY

IMPORTANT: Read the entire Directions for Use and the conditions of Sale and Warranty before using this product.

Conditions of sale and warranty

The Directions for Use of this product reflect the opinion of experts based on field use and tests. The directions are believed to be reliable and should be followed carefully. However, it is impossible to eliminate all risks inherently associated with use of this product. Crop injury, ineffectiveness, or other unintended consequences may result because of such factors as weather conditions, presence of other materials, or the manner of use or application all of which are beyond the control of the Manufacturer or the Seller. All such risks shall be assumed by the Buyer.

The Manufacturer warrants that this product conforms to the chemical description on the label and is reasonably fit for the purposes referred to in the Directions for Use subject to the inherent risks referred to above. The Manufacturer makes no other express or implied warranty of Fitness or Merchantability or any other express or implied warranty. In no case shall the Manufacturer or the Seller be liable for consequential, special, or indirect damages resulting from the use or handling of this product. The Manufacturer and the Seller offer this product, and the Buyer and user accept it, subject to the foregoing Conditions of Sale and Warranty, which may be varied only by agreement in writing signed by a duly authorized representative of The Manufacturer.

GENERAL INFORMATION

For total weed control on certain areas around the business or work place where no plant growth is desired, use as specified in label directions. Controls bindweed, common mullein, and other hard-to-kill weeds.

Prevents plant growth for up to one year.

This Liquid Vegetation Killer is a nonselective product intended for use after dilution with water, or an appropriate oil, or other approved carrier. For best results, apply to bare ground or when weed growth is just starting. Weeds taller than 4-6 inches should be hoed before treatment or it may be necessary to make a second application. A second application may be necessary to control deep-rooted perennial weeds. Use for bare ground vegetation control in driveways, brick walks, paths, patios, parking areas, play areas, along fences and curbs, around buildings, and under graveled pathways where plant growth has come through these surfaces.

Storage and Disposal

Do not reuse empty container. Wrap container and put in trash collection.

E.P.A. Reg. No. 2155-120-
E.P.A. EST. No. 2155-GA-1

6689/040589

CONTROL
NUMBER

NET CONTENTS
GALLONS

L.W.K. 3.7

Liquid Vegetation Kil

**FOR TOTAL VEGETATION CONTROL
PREVENTS PLANT GROWTH FOR UP TO ON
ONE GALLON COVERS UP TO 1200 SQU**

ACTIVE INGREDIENT:

PROMETON: 2,4-BIS (ISOPROPYLAMINO)-6-METHOXY-S-TRIAZINE.....
INERT INGREDIENTS*.....

TOTAL:

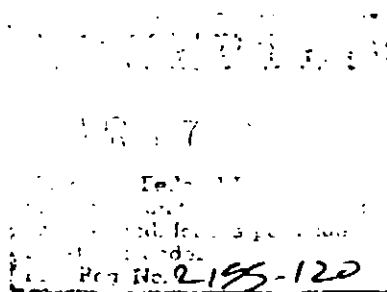
*Contains petroleum distillates
This product contains 0.375 lbs. of prometon per gallon.

KEEP OUT OF REACH OF CHILDREN WARNING

See additional precautionary statements on right side of label
Read entire label for use directions.

FOR COMMERCIAL/INDUSTRIAL ONLY. NOT FOR USE ON AGRICULTURAL
MANUFACTURED FOR:

I. SCHNEID, INC.
1429 FAIRMONT AVENUE NW
ATLANTA, GEORGIA 30318-4153



BEST COPY AVAILABLE

182

V.K. 3.75%

Liquid Vegetation Killer

FOR TOTAL VEGETATION CONTROL.
ITS PLANT GROWTH FOR UP TO ONE YEAR.
IT COVERS UP TO 1200 SQUARE FEET.

NT:

IS (ISOPROPYLAMINO)-6-METHOXY-S-TRIAZINE.....3.75%
TS*.....96.25%

100.00%

*Contains petroleum distillates

This product contains 0.375 lbs. of prometon per gallon.

KEEP OUT OF REACH OF CHILDREN.
WARNING

Additional precautionary statements on right side of label.
Read entire label for use directions.

INDUSTRIAL ONLY. NOT FOR USE ON AGRICULTURAL ESTABLISHMENTS.
MANUFACTURED FOR:

I. SCHNEID, INC.
1429 FAIRMONT AVENUE NW
ATLANTA, GEORGIA 30318-4153

DIRECTIONS FOR USE

It is a violation of federal law to use this product in a manner inconsistent with its labeling.
Not for use on turf being grown for sale or other commercial use as sod, or for commercial seed production, or for research purposes.

For use on plants in non-crop and non-forest areas only. Not for use on crops, timber, or other plants being grown for sale or other commercial use, or for commercial seed production, or for research purposes.

For control of annual and susceptible perennial weeds such as downy brome, grass, oatgrass, goosegrass, quackgrass, puncturevine, goldenrod, and plantain. To cover 100 sq. ft., add 10 - 16 fl. oz. by use of a sprinkling can or other watering or spraying device in sufficient water to get good coverage of the area (e.g., 2 1/2 gals. in sprinkling can). For control of hard-to-kill perennial broadleaf and grass weeds such as bindweed and johnsongrass as well as the biennials common mullein and wild carrot, use 1 1/3 - 1.8 qts. in sufficient water to get good coverage. Different grades of mineral oil, diesel fuel, petroleum-based oil, fuel oil, or kerosene may be substituted for water. When using sprinkling can, triple rinse and pour residue on area treated once application is completed. Mix only the quantity needed and use immediately. Do not store dilute solution once container is opened. To minimize lateral movement, sprinkle lightly with a watering can or similar sprinker device immediately after application.

PRECAUTIONS: (1) Apply when air is calm to avoid the possibility of drift onto desirable plants or grass. (2) Keep away from the roots of desirable plants and trees. (3) Use only in areas where complete control of all vegetation is desired. (4) **THIS LIQUID VEGETATION KILLER NOT TO BE USED ON CULTIVATED AREAS, ON GROUND THAT IS TO BE CULTIVATED, IN GREENHOUSES, OR NEAR THE DRIP LINE OF TREES OR SHRUBS.** (5) Do not use on slopes or in areas where runoff is likely to occur (apply only to level surfaces). (6) Avoid using where adjacent desirable trees, shrubs, or plants may be injured from leaching of the chemical through the soil. (7) Keep children and animals off treated areas until these areas are dry.

Precautionary Statements Hazards to Humans and Domestic Animals **WARNING**

Causes substantial but temporary eye injury. Do not get in eyes. Harmful if swallowed, inhaled or absorbed through skin. Avoid contact with skin or clothing. Avoid breathing vapor or spray mist. Wear safety glasses. Wash thoroughly with soap and water after handling. Remove contaminated clothing and wash before reuse.

Statements of Practical Treatment

If in eyes: Hold eyelids open and flush with a steady, gentle stream of water. Get medical attention.

If swallowed: Call a physician or Poison Control Center. Give water if conscious. May present aspiration hazard. **DO NOT** induce vomiting.

If on skin: Wash with plenty of soap and water. Get medical advice.

If inhaled: Remove victim to fresh air.

Notes to Physician

If swallowed, lavage stomach, taking care to avoid aspiration of stomach contents into the lungs.

Environmental Hazards

Do not use on slopes or in areas where runoff is likely to occur (apply only to level surfaces). Do not contaminate water used for irrigation or domestic purposes. Do not apply directly to water or wetlands.

Do not contaminate water when disposing of equipment washwaters. Do not contaminate water by cleaning of equipment or disposal of wastes. Do not contaminate water when disposing of equipment waste water. Apply this product only as specified on this label.

Physical or Chemical Hazards

Do not use, pour, spill or store near heat or open flame.

BEST COPY AVAILABLE