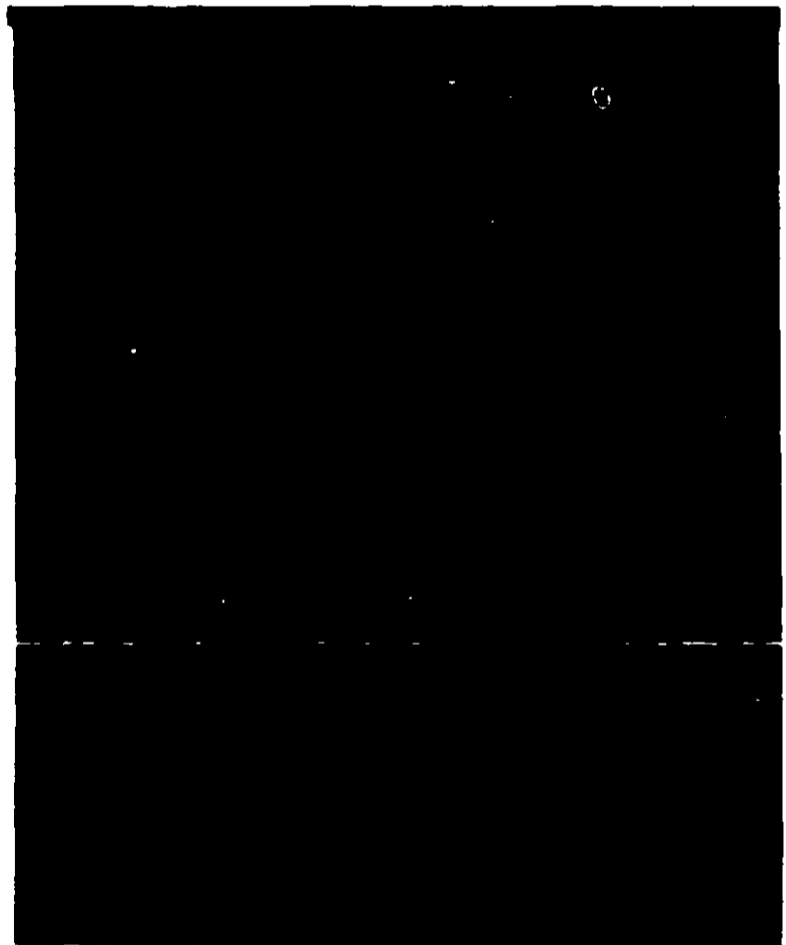




SYSTEMIC INSECTICIDE GRANULES

FOR: ROSES • SHRUBS • FLOWERS
• TOMATOES • OTHER VEGETABLES

Enters plants through roots. Kills sucking insects when they feed on plants—Contains Di-SYSTON



PRECAUTIONARY STATEMENTS
HAZARDS TO HUMANS AND DOMESTIC ANIMALS
WARNING— May be fatal if swallowed. May be absorbed through the skin. Irritates eyes. May irritate the respiratory tract. Just. Wear rubber gloves when handling and applying this product. Wash thoroughly after handling. Keep children and pets off treated areas until material has been worked into the soil. Do not use treated soil at all as fertilizer. Food items such as a teaspoon or measuring cup should not be used for food after use with pesticides. **ENVIRONMENTAL HAZARD**— This product is toxic to fish and birds. Do not apply directly to water, wet lands. Do not contaminate water by running of equipment or disposal of waste. Do not apply where it will run off.

DIRECTIONS FOR USE
 It is a violation of Federal law to use this product in a manner inconsistent with its labeling.

STORAGE AND DISPOSAL
 Do not contaminate water, food, or feed by storage or disposal. Store in the tight, closed original container in a locked area away from children and domestic animals. Do not reuse container. See label for other instructions. Several layers of newspaper or other material in trash.

HOW INSECTS ARE KILLED
 SYSTEMIC Insecticide penetrates plant through roots. Di-SYSTON is taken up and stored in plant tissue. Insect enters plant through natural growth and feeding. Kills insects from the bottom up. Kills insects when they feed on the plant.

DIRECTIONS FOR USE
FLOWERS Controls aphids, leafhoppers, leaf miners, thrips, whiteflies, mealybugs, scale insects, and spider mites. Apply 1/2 rounded teaspoon per 50 square feet area, evenly before planting. Use a 1/4 teaspoon per square foot into the soil. Or broadcast granules after plants are established. Water thoroughly after application. **IN THE ROW:** Apply 1/2 rounded teaspoon per 50 square feet of row in the seed furrow. Work into the soil and water thoroughly. **Established Plants:** Apply 1/2 rounded teaspoon per foot of row in a narrow band near base of plants. Work into top soil and water thoroughly. **Individual Plants:** Apply 1/2 rounded teaspoon around base of plant. Work into soil and water thoroughly. **POTTED PLANTS:** Apply 1/2 rounded teaspoon per 100 square feet of area. Water thoroughly and drench soil with water. Repeat applications 4 to 6 week intervals if insects reappear.

SHRUBS Controls aphids, leafhoppers, leaf miners, thrips, whiteflies, mealybugs, scale insects, and spider mites. Apply 1/2 rounded teaspoon per 50 square feet of row in the seed furrow. Work into the soil and water thoroughly. Repeat at 4 to 6 week intervals if insects reappear.

VEGETABLES: DO NOT ALLOW SEED TO COME IN CONTACT WITH GRANULES AT ANY TIME. DO NOT APPLY WITHIN THE NUMBER OF DAYS OF HARVEST SHOWN AFTER CROP NAME. **BEANS** (Snap Green Lima) Controls aphids, leafhoppers, Mexican bean beetle larvae. In rows 24 inches apart, use 7 oz (2 1/2 tablespoons) per 50 feet of row. Apply at planting time only in a band 1/2 inch wide on each side of the seed furrow. **BRUSSELS SPROUTS** 30; **BROCCOLI** 14; **CABBAGE** 42; **CAULIFLOWER** 40; Controls aphids, flea beetles, leafhoppers, leaf miners. Use 5 oz (1 1/2 rounded tablespoons) per 50 feet of row. Apply as a band on each side of the seed furrow at planting time only. As a preventive after plants are established, broadcast apply more than half a teaspoon per Brussels Sprouts or Cauliflower. Make only 1 application per season for Brussels Sprouts or Cauliflower. **Individual Transplants:** Mix 2 rounded teaspoons with soil in the transplant hole before setting in place. **LETTUCE, PEAS** Controls aphids, leafhoppers, leaf miners, thrips. In rows 18 inches apart, use 5 oz (1 1/2 rounded tablespoons) per 50 feet of row at planting time only. Apply as a band on each side of the seed furrow. **SPINACH** Controls aphids, leafhoppers, leaf miners, thrips. In rows 18 inches apart, use 2 1/2 rounded tablespoons per 50 feet of row at planting time only. Apply as a band on each side of the seed furrow. **TOMATOES:** 30; Controls aphids, flea beetles, leafhoppers, leaf miners. In rows 36 inches apart, use 12 oz (3 3/4 tablespoons) per 50 feet of row at planting time only. Apply as a band on each side of the seed furrow. **Individual Transplants:** Mix 2 rounded teaspoons with soil in the transplant hole before setting in place.

LIMITED WARRANTY: BUYER ASSUMES ALL RISKS OF USE, STORAGE, AND HANDLING OF THIS MATERIAL, NOT IN STRICT ACCORDANCE WITH DIRECTIONS GIVEN HEREWITH.

